

UNITED STATES  
DEPARTMENT OF THE INTERIOR  
BUREAU OF LAND MANAGEMENT

OCD Artesia

FORM APPROVED  
OMB NO. 1004-0137  
Expires: January 31, 2018**SUNDRY NOTICES AND REPORTS ON WELLS**  
*Do not use this form for proposals to drill or to re-enter an abandoned well. Use form 3160-3 (APD) for such proposals.***SUBMIT IN TRIPLICATE - Other instructions on page 2**

1. Type of Well <input type="checkbox"/> Oil Well <input checked="" type="checkbox"/> Gas Well <input type="checkbox"/> Other		5. Lease Serial No. NMNM20965
2. Name of Operator RKI EXPLORATION & PRODUCTION Contact: CAITLIN O'HAIR E-Mail: caitlin.ohair@wpenergy.com		6. If Indian, Allottee or Tribe Name
3a. Address 3500 ONE WILLIAMS CENTER MD 35 TULSA, OK 74172	3b. Phone No. (include area code) Ph: 539-573-3527	7. If Unit or CA/Agreement, Name and/or No.
4. Location of Well (Footage, Sec., T., R., M., or Survey Description) Sec 17 T26S R30E 75FNL 2510FWL		8. Well Name and No. RDX FEDERAL COM 17 046H
		9. API Well No. 30-015-44410
		10. Field and Pool or Exploratory Area PURPLE SAGE;WOLFCAMP (GAS)
		11. County or Parish, State EDDY COUNTY, NM

**12. CHECK THE APPROPRIATE BOX(ES) TO INDICATE NATURE OF NOTICE, REPORT, OR OTHER DATA**

TYPE OF SUBMISSION	TYPE OF ACTION			
<input checked="" type="checkbox"/> Notice of Intent	<input type="checkbox"/> Acidize	<input type="checkbox"/> Deepen	<input type="checkbox"/> Production (Start/Resume)	<input type="checkbox"/> Water Shut-Off
<input type="checkbox"/> Subsequent Report	<input type="checkbox"/> Alter Casing	<input type="checkbox"/> Hydraulic Fracturing	<input type="checkbox"/> Reclamation	<input type="checkbox"/> Well Integrity
<input type="checkbox"/> Final Abandonment Notice	<input type="checkbox"/> Casing Repair	<input type="checkbox"/> New Construction	<input type="checkbox"/> Recomplete	<input type="checkbox"/> Other
	<input type="checkbox"/> Change Plans	<input type="checkbox"/> Plug and Abandon	<input type="checkbox"/> Temporarily Abandon	
	<input type="checkbox"/> Convert to Injection	<input type="checkbox"/> Plug Back	<input checked="" type="checkbox"/> Water Disposal	

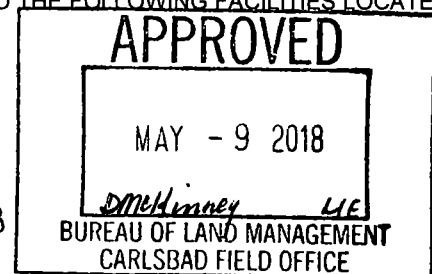
13. Describe Proposed or Completed Operation: Clearly state all pertinent details, including estimated starting date of any proposed work and approximate duration thereof. If the proposal is to deepen directionally or recompleat horizontally, give subsurface locations and measured and true vertical depths of all pertinent markers and zones. Attach the Bond under which the work will be performed or provide the Bond No. on file with BLM/BIA. Required subsequent reports must be filed within 30 days following completion of the involved operations. If the operation results in a multiple completion or recompleat in a new interval, a Form 3160-4 must be filed once testing has been completed. Final Abandonment Notices must be filed only after all requirements, including reclamation, have been completed and the operator has determined that the site is ready for final inspection.

RKI EXPLORATION AND PRODUCTION, LLC PROPOSES TO DISPOSE WATER TO THE FOLLOWING FACILITIES LOCATED IN LOVING, TX:

DAM SITE UNIT #1, API 42-301-30047, UIC 000102256 ✓  
STATELINE SWD 2 #1, API 42-301-31961, UIC 000107340 ✓  
STATELINE SWD 2 #2, API 42-301-31958, UIC 000107045 ✓  
STATELINE SWD 2 #3, API 42-301-31959, UIC 000107341 ✓  
STATELINE SWD 2 #4, API 42-301-31960, UIC 000107342 ✓  
RED BLUFF 8 #1, API 42-301-30294, UIC 000100957 ✓  
RED BLUFF 8 #2D, API 42-301-30333, UIC 000101482 ✓  
RED BLUFF DEEP #1D, API 42-301-30225, UIC 000102257 ✓

RECEIVED

MAY 31 2018



DISTRICT II-ARTESIA O.C.D.

14. I hereby certify that the foregoing is true and correct. Electronic Submission #412794 verified by the BLM Well Information System For RKI EXPLORATION & PRODUCTION, sent to the Carlsbad Committed to AFMSS for processing by DEBORAH MCKINNEY on 05/01/2018 ( )	
Name (Printed/Typed) CAITLIN O'HAIR	Title SUBMITTER
Signature (Electronic Submission)	Date 04/30/2018

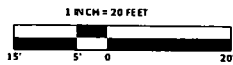
**THIS SPACE FOR FEDERAL OR STATE OFFICE USE**

Approved By _____	Title _____	Date _____
Conditions of approval, if any, are attached. Approval of this notice does not warrant or certify that the applicant holds legal or equitable title to those rights in the subject lease which would entitle the applicant to conduct operations thereon.		Office _____

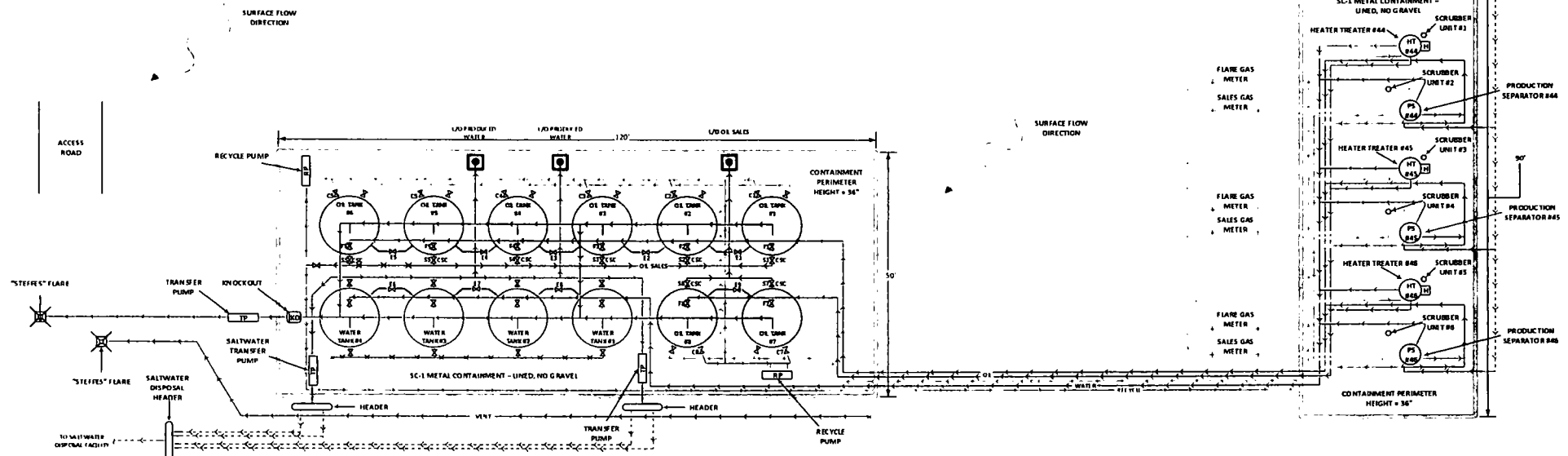
Title 18 U.S.C. Section 1001 and Title 43 U.S.C. Section 1212, make it a crime for any person knowingly and willfully to make to any department or agency of the United States any false, fictitious or fraudulent statements or representations as to any matter within its jurisdiction.

(Instructions on page 2)

**\*\* OPERATOR-SUBMITTED \*\* OPERATOR-SUBMITTED \*\* OPERATOR-SUBMITTED \*\***



RDX 17-46H WELLHEAD  
RDX 17-45H WELLHEAD  
RDX 17-44H WELLHEAD



**Equipment: Volume & Dimensions**

- Oil Tank #1: 500 Bbl, 12.0' diameter
- Oil Tank #2: 500 Bbl, 12.0' diameter
- Oil Tank #3: 500 Bbl, 12.0' diameter
- Oil Tank #4: 500 Bbl, 12.0' diameter
- Oil Tank #5: 500 Bbl, 12.0' diameter
- Oil Tank #6: 500 Bbl, 12.0' diameter
- Oil Tank #7: 500 Bbl, 12.0' diameter
- Oil Tank #8: 500 Bbl, 12.0' diameter
- Water Tank #1: 500 Bbl produced water, 12.0' diameter
- Water Tank #2: 500 Bbl produced water, 12.0' diameter
- Water Tank #3: 500 Bbl produced water, 12.0' diameter
- Water Tank #4: 500 Bbl produced water, 12.0' diameter
- Heater Treater #44: 100.72 Bbl, 6.0' diameter
- Heater Treater #45: 100.72 Bbl, 6.0' diameter
- Heater Treater #46: 100.72 Bbl, 6.0' diameter
- Production Separator #44: 179.10 Bbl, 8.0' diameter
- Production Separator #45: 179.10 Bbl, 8.0' diameter
- Production Separator #46: 179.10 Bbl, 8.0' diameter
- Scrubber Unit #1: 0.42 Bbl, 1.0' diameter
- Scrubber Unit #2: 0.42 Bbl, 1.0' diameter
- Scrubber Unit #3: 0.42 Bbl, 1.0' diameter
- Scrubber Unit #4: 0.42 Bbl, 1.0' diameter
- Scrubber Unit #5: 0.42 Bbl, 1.0' diameter
- Scrubber Unit #6: 0.42 Bbl, 1.0' diameter

**Production Phase:** Safety valves S1 through S8 sealed closed. Full valve to tank that is in production will be open. Equalizer valve to tank in production will be open. Circulating valves will be open as necessary, then released.

**Safety Phase:** The tank from which safety valves are being made will be isolated by sealing closed the fill valve, circulating valve, and the equalizer valve during sales and opening the safety valve. Upon completion of the sale the safety valve will be released. Sales by truck will be by tank gauge.

Valve	Production Phase	Safety Phase	Comments
S1	Closed	Open	Closed
S2	Closed	Open	Closed
S3	Closed	Open	Closed
S4	Closed	Open	Closed
S5	Closed	Open	Closed
S6	Closed	Open	Closed
S7	Closed	Open	Closed
S8	Closed	Open	Closed
S9	Closed or Open	Closed	Closed or Open
S10	Closed or Open	Closed	Closed or Open
S11	Closed or Open	Closed	Closed or Open
S12	Closed or Open	Closed	Closed or Open
S13	Closed or Open	Closed	Closed or Open
S14	Closed or Open	Closed	Closed or Open
S15	Closed or Open	Closed	Closed or Open
S16	Closed or Open	Closed	Closed or Open
S17	Closed or Open	Closed	Closed or Open
S18	Closed or Open	Closed	Closed or Open
S19	Closed or Open	Closed	Closed or Open
S20	Closed or Open	Closed	Closed or Open
S21	Closed or Open	Closed	Closed or Open
S22	Closed or Open	Closed	Closed or Open
S23	Closed or Open	Closed	Closed or Open
S24	Closed or Open	Closed	Closed or Open
S25	Closed or Open	Closed	Closed or Open
S26	Closed or Open	Closed	Closed or Open
S27	Closed or Open	Closed	Closed or Open
S28	Closed or Open	Closed	Closed or Open
S29	Closed or Open	Closed	Closed or Open
S30	Closed or Open	Closed	Closed or Open

NOTE: Some measure marks on drawing are estimates and not field verified.

**FACILITY SITE DIAGRAM**  
RKI Exploration & Production, LLC - Permian Basin  
RDX 17-44H (45, 46)  
Latitude: 32.048586° Longitude: -103.906195°  
UNIT D, SEC. 17, T26S, R30E  
API: 30-015-44409  
EDDY COUNTY, NM

DRAWN BY: Kevin Fox  
DATE: 1.17.2018

LEGEND	
— ABOVE-GRADE EQUIPMENT	— OIL DUMP LINE
— BELOW-GRADE EQUIPMENT	— WATER DUMP LINE
— SECONDARY CONTAINMENT	— FLOW LINE
◆ WELL HEAD	— VENT LINE
□ HEATER	— RECYCLE LINE
△ OVERFILL ALARM	— ROLL LINE
— FENCE	
— PRV LINE	
— GAS LINE	
— FUEL GAS LINE	
— SKIMMER	

THIS SITE IS SUBJECT TO THE SITE SECURITY PLAN FOR THE PERMIAN BASIN.

