

UNITED STATES
DEPARTMENT OF THE INTERIOR
BUREAU OF LAND MANAGEMENT

Artesia Field Office

FORM APPROVED
OMB NO. 1004-0137
Expires: January 31, 2018**SUNDRY NOTICES AND RECORDS**
Do not use this form for proposals to drill or to re-enter an abandoned well. Use form 3160-3 (APD) for such proposals.5. Lease Serial No.
NMNM030456

6. If Indian, Allottee or Tribe Name

SUBMIT IN TRIPLICATE - Other instructions on page 27. If Unit or CA/Agreement, Name and/or No.
891000303X8. Well Name and No.
POKER LAKE UNIT CVX JV BS 24H9. API Well No.
30-015-41598-00-S110. Field and Pool or Exploratory Area
WCG06S253002O-BONE SPRING11. County or Parish, State
EDDY COUNTY, NM

12. CHECK THE APPROPRIATE BOX(ES) TO INDICATE NATURE OF NOTICE, REPORT, OR OTHER DATA

TYPE OF SUBMISSION	TYPE OF ACTION			
<input checked="" type="checkbox"/> Notice of Intent	<input type="checkbox"/> Acidize	<input type="checkbox"/> Deepen	<input type="checkbox"/> Production (Start/Resume)	<input type="checkbox"/> Water Shut-Off
<input type="checkbox"/> Subsequent Report	<input type="checkbox"/> Alter Casing	<input type="checkbox"/> Hydraulic Fracturing	<input type="checkbox"/> Reclamation	<input type="checkbox"/> Well Integrity
<input type="checkbox"/> Final Abandonment Notice	<input type="checkbox"/> Casing Repair	<input checked="" type="checkbox"/> New Construction	<input type="checkbox"/> Recomplete	<input type="checkbox"/> Other
	<input type="checkbox"/> Change Plans	<input type="checkbox"/> Plug and Abandon	<input type="checkbox"/> Temporarily Abandon	
	<input type="checkbox"/> Convert to Injection	<input type="checkbox"/> Plug Back	<input type="checkbox"/> Water Disposal	

13. Describe Proposed or Completed Operation: Clearly state all pertinent details, including estimated starting date of any proposed work and approximate duration thereof. If the proposal is to deepen directionally or recompleat horizontally, give subsurface locations and measured and true vertical depths of all pertinent markers and zones. Attach the Bond under which the work will be performed or provide the Bond No. on file with BLM/BIA. Required subsequent reports must be filed within 30 days following completion of the involved operations. If the operation results in a multiple completion or recompleat in a new interval, a Form 3160-4 must be filed once testing has been completed. Final Abandonment Notices must be filed only after all requirements, including reclamation, have been completed and the operator has determined that the site is ready for final inspection.

BOPCO, LP respectfully submits this sundry notice of intent to construct the Poker Lake Unit North/South Trunk Line on Federal surface.

The project will consist of a 24772.21' pipeline corridor, 21,724.57' which is situated on Federal surface (3047.64, on State of New Mexico Trust lands). Multiple lines will be constructed along a common corridor connecting the proposed 'Row 2' planned development to the north and 'Row 5' planned development to the south.

Pipeline request, line detail and plats are attached to this sundry.

RECEIVED

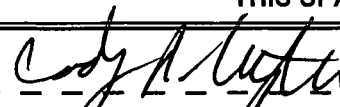
AUG 07 2018

CC 8-13-18
Accepted for record - NMOCD

DISTRICT II-ARTESIA O.C.D.

14. I hereby certify that the foregoing is true and correct. Electronic Submission #406967 verified by the BLM Well Information System For BOPCO LP, sent to the Carlsbad Committed to AFMSS for processing by PRISCILLA PEREZ on 03/21/2018 (18PP1356SE)	
Name (Printed/Typed) TRACIE J CHERRY	Title REGULATORY ANALYST
Signature (Electronic Submission)	Date 03/07/2018

THIS SPACE FOR FEDERAL OR STATE OFFICE USE

Approved By 	Title RFM	Date 07/16/2018
Conditions of approval, if any, are attached. Approval of this notice does not warrant or certify that the applicant holds legal or equitable title to those rights in the subject lease which would entitle the applicant to conduct operations thereon.	Office CPO	

Title 18 U.S.C. Section 1001 and Title 43 U.S.C. Section 1212, make it a crime for any person knowingly and willfully to make to any department or agency of the United States any false, fictitious or fraudulent statements or representations as to any matter within its jurisdiction.

(Instructions on page 2)

** BLM REVISED ** BLM REVISED ** BLM REVISED ** BLM REVISED ** BLM REVISED **

Pipeline Request

Poker Lake Unit Row 5 North South Trunk Line Corridor

XTO Energy, Inc. / BOPCO, L.P.

Sections 1, 11, 12, 13, 14 & 24-T25S-R30E (Bureau of Land Management)

Sections 20, 28, 29 & 30-25S-31E (Bureau of Land Management)

Section 2 25S-30E (New Mexico State Land – BOPCO, LP Lease)

Eddy County, New Mexico

1. PURPOSE AND NEED:

- a. XTO Energy, Inc / BOPCO, L.P respectfully requests a 150' wide permanent trunk line corridor. be granted through Poker Lake Unit Sections 01, 02, 11, 12, 13, 14 & 24-T25S-R30E, and Sections 19 & 30-25S-31E. Section 02-25S-30E, State of New Mexico Trust Lands is included in this route. Also requested is a 50' wide permanent pipeline corridor easement adjoining the trunk line to a proposed frac pond facility.
- b. The purpose of the trunk line corridor is to extend the midstream takeaway system throughout contiguous acreage for the purpose of selling oil and gas, disposal of produced water, reuse of produced water, and interconnect critical pieces of operations safely and responsibly with consideration to the environment, long-term development, and mineral production.
- c. XTO Energy, Inc./BOPCO, L.P. anticipates a project start date of: May 15, 2017 with construction taking 8 months. Upon completion of construction, XTO Energy/BOPCO, L.P. requests 6mos to complete interim reclamation of the site and install necessary traffic deterrents whereupon a subsequent sundry will be filed with the Authorized Officer. If additional time is deemed necessary to complete construction or reclamation, a sundry will be filed with the Authorized Officer pursuant to anticipated activities.
- d. This trunk line corridor is to interconnect XTO Energy, Inc. and BOPCO, L.P. projects. XTO Energy, Inc. is the legal authority over BOPCO, L.P. until such time as the incorporation is dissolved, anticipated April 1, 2018. XTO Energy, Inc. as legal authority at this time over BOPCO, L.P., is considered as dual-lessee over BOPCO, L.P.'s acreage until such anticipated date as April 1, 2018 whereupon XTO Energy, Inc. will be changed to the official designated operator over all existing BOPCO, L.P. leaseholds.
- e. The trunk line corridor as proposed is anticipated to hold up to 10 pipelines, all 22" or less in diameter, to carry oil, gas, water, produced water, high pressure gas, low pressure gas, and aide to a buried water system for drilling and completion activities throughout Poker Lake Unit. A final report of pipeline diameters will be submitted on a subsequent sundry to the BLM upon the completion of the trunk line corridor.
- f. Pipeline specifics can be found on Exhibit A.
- g. All lines will be buried a minimum of 36" beneath the surface.
- h. All requested disturbance is anticipated to follow existing disturbance areas where possible.
- i. The trunk line corridor will be identified by signs at the point of origin and completion of the line in addition to all road crossings. Signs will state, at minimum: the holder's name and product being transported. All signs and information thereon will be posted in a permanent, conspicuous manner, and will be maintained in a legible condition for the life of the trunk line corridor.
- j. The trunk line corridor will not be used as a road for purposes other than routine maintenance as determined necessary by the Authorized Officer in consultation with XTO Energy/BOPCO, L.P. before maintenance begins. XTO Energy/BOPCO, L.P. will take all

necessary precautions to ensure that the trunk line route is not used as a roadway. Temporary deterrence structures will be used as needed and approved by the Authorized Officer.

- k. All permanent aboveground structures (on site six months or longer), such as risers, constructed or installed on location and not subject to safety requirements will be painted an earth-tone color such as 'Carlsbad Canyon' as determined by the Authorized Officer that reduces the visual impacts on the built environment.
- l. Escape ramps will be constructed and maintained that are not fenced, screened, or netted to prevent livestock, wildlife, and humans from becoming entrapped. XTO Energy/BOPCO, L.P. will construct and maintain escape ramps, ladders, or other methods of avian/terrestrial wildlife escape in the trenches according to the following criteria:
 - Any trench left open for 8 hours or less will not have escape ramps. However, prior to backfilling, XTO/BOPCO, L.P. shall inspect the trench for wildlife, remove all trapped wildlife, and release them at least 100 yards from the trench.
 - Any trench left open for more than 8 hours will have earthen escape ramps built at no more than a 30 degree slope and spaced no more than 500' apart inside of the trench.

2. PIPELINE LOCATION:

- a. See Attached Plats

3. FACILITY DESIGN FACTORS:

- a. See Attached Table (Exhibit A)

4. LOCATION OF PROPOSED FACILITIES

- a. **Flare.** One flare stack will be located on each compressor station. Each flare will be sized appropriately and with 150' of distance between all facility equipment, road and well pad locations for safety purposes.
- b. **Communication Tower.** A communication tower will be located on the compressor station pads and will be sized to 189' set in a concrete foundation for purposes of long-distance communication. An FAA permit will be acquired by XTO Energy, Inc./BOPCO, L.P. prior to construction of the facility and construction will not ensue until such time as all permits are received from appropriate regulatory entities.
- c. **Aboveground Structures:** All permanent (on site six months or longer) aboveground structures constructed or installed on location and not subject to safety requirements will be painted earth-tone colors such as 'Carlsbad Canyon' that reduce the visual impacts of the built environment.
- d. **Containment Berms:** Containment berms will be constructed completely around any production facilities designed to hold fluids. The containment berms will be constructed of compacted subsoil, be sufficiently impervious, hold 1 ½ times the capacity of the largest tank and away from cut or fill areas.

5. PROPOSED ROADS:

- a. **New Roads.** No new roads are anticipated.
- b. **Routing.** All equipment and vehicles will be confined to the travel routes laid out in the proposed road corridors or existing roads as detailed in the sundry application otherwise approved by the BLM and applied for by XTO Energy, Inc./BOPCO, L.P.

6. ADDITIONAL GOVERNMENT AGENCIES INVOLVED:

- a. New Mexico State Land office. Appropriate Right-of-Ways, where needed, have been filed with the New Mexico State Land Office.

7. METHODS OF HANDLING WASTE DISPOSAL:

- a. Portable, self-contained chemical toilets will be provided for human waste disposal. Upon completion of operations, or as required, the toilet holding tanks will be pumped and the contents thereof disposed of in an approved sewage disposal facility. All state and local laws and regulations pertaining to disposal of human and solid waste will be complied with. This equipment will be properly maintained during the drilling and completion operations and will be removed when all operations are complete.
- b. All trash, junk, and other waste materials will be contained in trash cages or bins to prevent scattering and will be removed and deposited in an approved sanitary landfill. Immediately after trunk line corridor completion all debris and other waste materials on and around the well location not contained in the trash cage will be cleaned up and removed from the location. No potentially adverse materials or substances will be left on the location.
- c. Hazardous Materials.
 - XTO Energy, Incorporated/BOPCO, L.P., and its contractors will comply with all applicable Federal, State and local laws and regulations, existing or hereafter enacted promulgated, with regard to any hazardous material, as defined in this paragraph, that will be used, produced, transported or stored on the oil and gas lease. "Hazardous material" means any substance, pollutant or contaminant that is listed as hazardous under the CERCLA of 1980, as amended, 42 U.S.C 9601 et seq., and its regulation. The definition of hazardous substances under CERCLA includes any "hazardous waste" as defined in the RCRA of 1976, as amended, 42 U.S.C. 6901 et seq., and its regulations. The term hazardous material also includes any nuclear or nuclear by-product material as defined by the Atomic Energy Act of 1954, as amended, 42 U.S.C. 2011 et seq. The term does not include petroleum, including crude oil or any fraction thereof that is not otherwise specifically listed or designated as a hazardous substance under CERCLA Section 101 (14) U.S.C. 9601 (14) nor does the term include natural gas.
 - No hazardous substances or wastes will be stored on the location after completion of the trunk line corridor.
 - Chemicals brought to location will be on the Toxic Substance Control Act (TSCA) approved inventory list.
 - All undesirable events (fires, accidents, blowouts, spills, discharges) as specified in Notice to Lessees (NTL) 3A will be reported to the BLM Carlsbad Field Office. Major events will be reported verbally within 24 hours, followed by a written report within 15 days. "Other than Major Events" will be reported in writing within 15 days.

ANCILLARY FACILITIES:

No campsite, airstrip or other facilities will be built as a result of this operation. No staging areas are needed.

8. PLANS FOR SURFACE RECLAMATION:

Interim Reclamation:

Definition: Reclamation includes disturbed areas where the original landform and a natural vegetative community will be restored and it is anticipated the site will not be disturbed for future development.

Reclamation Standards:

After construction has taken place, all areas of the applied for corridor will be reclaimed and seeded as per BLM requirements for reclamation.

Vegetation, soil, and rocks left as a result of construction of maintenance activity will be randomly scattered on the applied for trunk line corridor and will not be left in rows, piles, or berms, unless otherwise approved by the Authorized Officer. The entire trunk line corridor shall be recontoured to match the surrounding landscape. The backfilled soil shall be compacted and a 6-inch berm will be left over the ditch line to allow for settling back to grade.

Erosion features are equal to or less than surrounding area and erosion control is sufficient so that water naturally infiltrates into the soil and gulying, headcutting, slumping, and deep or excessive rills (greater than 3 inches) are not observed.

In those areas where erosion control structure are required to stabilize soil conditions, XTO Energy, Incorporated / BOPCO, L.P. will install such structures as are suitable for specific soil conditions being encountered and which are in accordance with sound resource management practices.

The location will then be ripped and seeded. A self-sustaining, vigorous, diverse, native (or otherwise approved) plant community will be established on the site with a density sufficient to control erosion and invasion by non-native plants and to re-establish wildlife habitat or forage production. At a minimum, the established plant community will consist of species included in the seed mix and/or desirable species occurring in the surrounding natural vegetation.

The site will be free of State-or County-listed noxious weeds, oil field debris and equipment, and contaminated soil. Invasive and non-native weeds will be controlled.

Seeding:

- Seedbed Preparation: Initial seedbed preparation will consist of recontouring to the appropriate interim or final reclamation standard. All compacted areas to be seeded will be ripped to a minimum depth of 18 inches with a minimum furrow spacing of 2 feet, followed by recontouring the surface and then evenly spreading the stockpiled topsoil. Prior to seeding, the seedbed will be scarified to a depth of no less than 4-6 inches. If the site is to be broadcast seeded, the surface will be left rough enough to trap seed and snow, control erosion, and increase water infiltration.
- If broadcast seeding is to be used and is delayed, final seedbed preparation will consist of contour cultivating to a depth of 4-6 inches within 24 hours prior to seeding, dozer tracking, or other imprinting in order to break the soil crust and create seed germination micro-sites.

- Seed Application. Seeding will be conducted no more than two weeks following completion of final seedbed preparation. A certified weed-free seed mix designed by the BLM to meet reclamation standards will be used.
- If the site is harrowed or dragged, seed will be covered by no more than 0.25 inch of soil.

9. OTHER INFORMATION:

- a. There is no permanent or live water in the immediate area.
- b. There are no dwellings within 2 miles of this location.
- c. A Class III Cultural Resources Examination has been completed by Boone Archaeological Services and the results will be forwarded to the BLM office.
- d. A 3rd Party EA was completed and submitted to the BLM office.
- e. A wildlife survey was completed and submitted to the BLM office.

10. BOND COVERAGE:

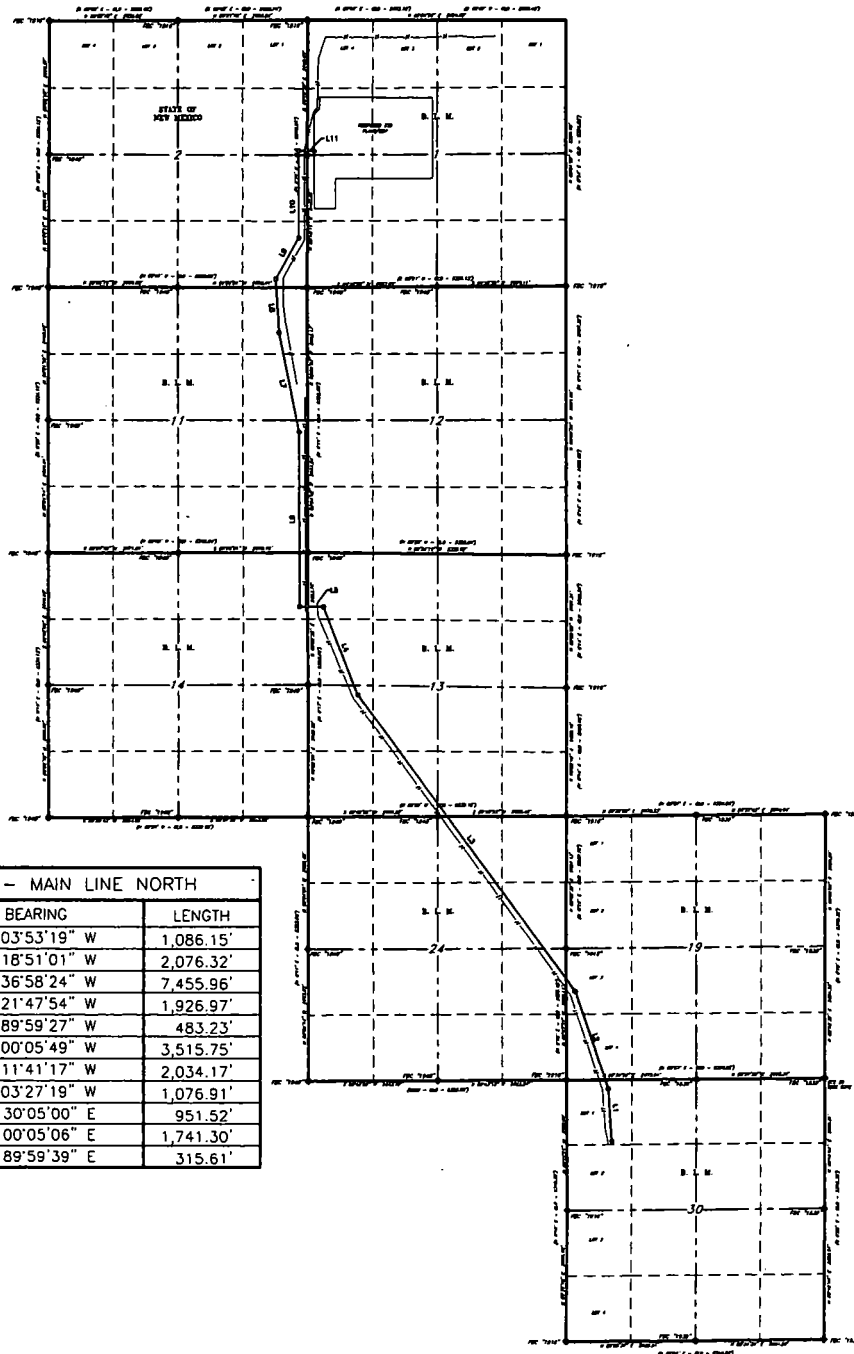
- a. XTO Energy, Inc. Bond Coverage is Nationwide; Bond Number UTB000138.
- b. BOPCO, LP Bond Coverage is Nationwide; Bond Number COB000050

Poker Lake Unit North South Trunk Line Corridor
XTO Energy, Inc. / BOPCO, L.P.
Sections 1, 2, 11, 12, 13, 14 & 24 25S-30E (Bureau of Land Management)
Sections 19 & 30-25S-31E (Bureau of Land Management)
Section 02-28S-30E (New Mexico State Land-BOPCO, LP/XTO Lease)
Eddy County, New Mexico

Total Pipelines in Corridor:	Up to 10
Total Pipeline Width:	150' & 50'
Total Federal Pipeline Length:	21,724.57
Temporary Federal Surface Disturbance:	69,969 acres
Permanent Federal Surface Disturbance:	0
Total State of New Mexico Pipeline Length:	3047.64
Temporary State of New Mexico Surface Disturbance:	10,495 acres

North South Trunkline (36" Width)			
Locations 20, 22, 27, 28, 29, 28, 206, 206, 5, 20, 28, 29, 20, 205, 206			
Type	MAWP	Material	Approx. Length
o Oil: 20"	1440	Steel	19616.25
o High Pressure Gas 1: 20"	1440	Steel	19616.25
o High Pressure Gas 2: 16"	1440	Steel	19616.25
o Gas Lift: 8"	1440	Steel	19616.25
o Fuel Gas: 8"	1440	Steel	19616.25
o Condensate: 6"	1440	Poly	19616.25
o Frac Water: 22"	250	Poly	19616.25
o Produced Water: 22"	250	Poly	19616.25
o Recycle Water: 16"	250	Poly	19616.25
o Fresh Water: 22"	250	Poly	19616.25

Fracturing Connection (50' Width)			
Section 44.1 PHS-30E			
Type	MAWP	Material	Approx. Length
o Frac Water: 22"	250	Poly	2108.32
o Produced Water: 20"	250	Poly	2108.32
o Recycle Water: 16"	250	Poly	2108.32
o Fresh Water: 20"	250	Poly	2108.32



LINE TABLE - MAIN LINE NORTH		
LINE	BEARING	LENGTH
L1	N 03°53'19" W	1,086.15'
L2	N 18°51'01" W	2,076.32'
L3	N 36°58'24" W	7,455.96'
L4	N 21°47'54" W	1,926.97'
L5	N 89°59'27" W	483.23'
L6	N 00°05'49" W	3,515.75'
L7	N 11°41'17" W	2,034.17'
L8	N 03°27'19" W	1,076.91'
L9	N 30°05'00" E	951.52'
L10	N 00°05'06" E	1,741.30'
L11	S 89°59'39" E	315.61'

() RECORD DATA - GLO
◆ FOUND MONUMENT
AS NOTED

0 1500' 3000'

Copyright 2016 - All Rights Reserved

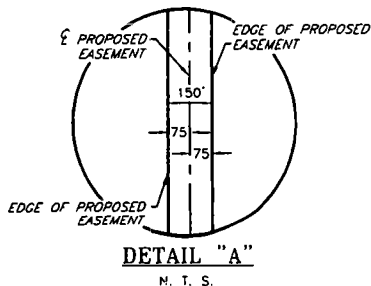
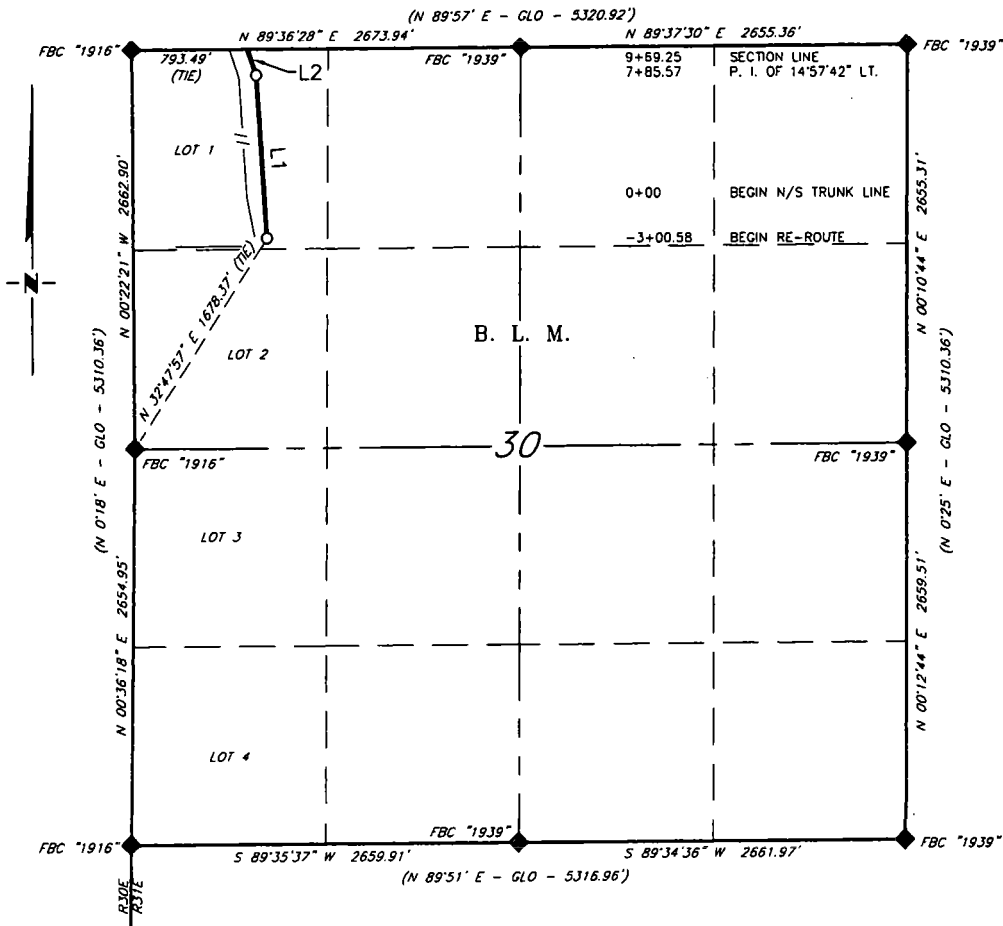
NO.	REVISION	DATE
JOB NO.: LS1706366A		
DWG. NO.: 1706366A-1		

RRC

SHEET: 1 OF 10

308 W. BROADWAY ST., HOBBS, NM 88240 (575) 964-8200

XTO ENERGY, INC.
PROPOSED ROW 5 NORTH/SOUTH TRUNK LINE
SECTION 30, T25S, R31E,
N. M. P. M., EDDY CO., NEW MEXICO



LINE TABLE - MAIN LINE NORTH		
LINE	BEARING	LENGTH
L1	N 03°53'19\" W	1,086.15'
L2	N 18°51'01\" W	183.68'

SCALE: 1" = 1000'
0 500' 1000'

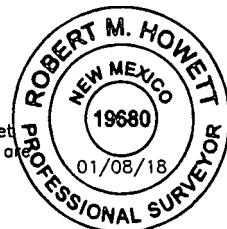
BEARINGS ARE GRID NAD 83
NM EAST
DISTANCES ARE HORIZ. GROUND.

LEGEND
() RECORD DATA - GLO
◆ FOUND MONUMENT AS NOTED
— PROPOSED NORTH/SOUTH TRUNK LINE

Firm No.: TX 10193838 NM 4655451

I, R. M. Howett, a N. M. Professional Surveyor, hereby certify that I prepared this plat from an actual survey made on the ground under my direct supervision, said survey and plat meet the Min. Stds. for Land Surveying in the State of N. M. and are true and correct to the best of my knowledge and belief.

Robert M. Howett
Robert M. Howett NM PS 19680



Copyright 2016 - All Rights Reserved

NO.	REVISION	DATE
JOB NO.:	LS1706366A	
DWG. NO.:	1706366A-2	

RRC

308 W. BROADWAY ST., HOBBS, NM 88240 (575) 964-8200

SCALE: 1" = 1000'
DATE: 5/31/17
SURVEYED BY: JM/EF
DRAWN BY: CMJ
APPROVED BY: RMH
SHEET: 2 OF 10

XTO ENERGY, INC.
PROPOSED ROW 5 NORTH/SOUTH TRUNK LINE
SECTION 30, T25S, R31E,
N. M. P. M., EDDY CO., NEW MEXICO

DESCRIPTION

A strip of land 150 feet wide, being 1,269.83 feet or 76.959 rods in length, lying in Section 30, Township 25 South, Range 31 East, N. M. P. M., Eddy County, New Mexico, being 75 feet left and 75 feet right of the following described survey of a centerline across B. L. M. land:

BEGINNING at Engr. Sta. -3+00.58, a point in Lot 1, of Section 30, which bears, N 32°47'57" E, 1,678.37 feet from a brass cap, stamped "1916", found for the West quarter corner of Section 30;

Thence N 03°53'19" W, 1,086.15 feet, to Engr. Sta. 7+85.57 a P. I. of 14°57'42" left;

Thence N 18°51'01" W, 183.68 feet to Engr. Sta. 9+69.25, a point on the North line of Section 30, which bears, N 89°36'28" E, 793.49 feet from a brass cap, stamped "1916", found for the Northwest quarter corner of Section 30.

Said strip of land contains 4.373 acres, more or less, and is allocated by forties as follows:

Lot 1	76.959 Rods	4.373 Acres
-------	-------------	-------------

Firm No.: TX 10193838 NM 4655451

Copyright 2016 - All Rights Reserved

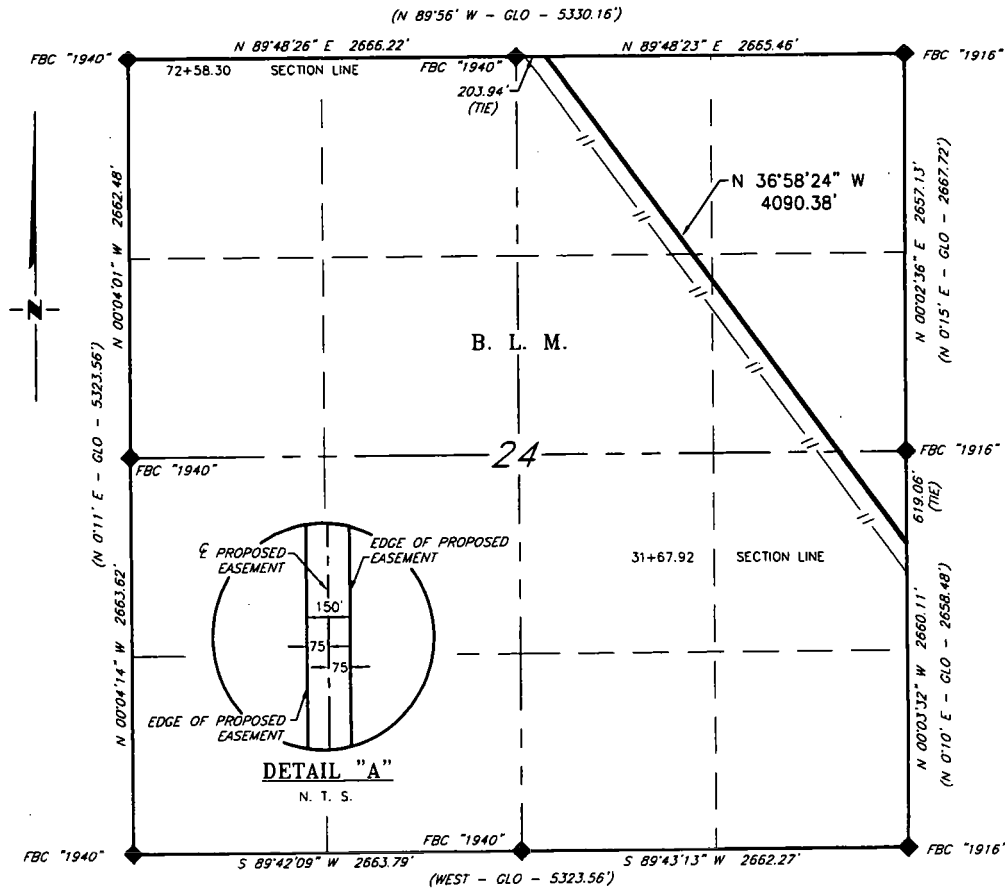
			SCALE: 1" = 1000'
			DATE: 5/31/17
			SURVEYED BY: JM/EF
			DRAWN BY: CMJ
NO.	REVISION	DATE	APPROVED BY: RMH
JOB NO.: LS1706366A			SHEET: 3 OF 10
DWG. NO.: 1706366A-3			

308 W. BROADWAY ST., HOBBS, NM 88240 (575) 964-8200

(N 89°57' E - GLO - 5326.86')
 N 89°33'53" E 2670.33' FBC "1939"
 N 89°37'43" E 2674.04' FBC "1939"
 (N 0°15' E - GLO - 2667.72')
 N 00°02'36" E 2657.13' LOT 1
 LOT 2
 B. L. M. DETAIL "A"
 N. T. S.
 FBC "1916" FBC "1939"
 (N 0°10' E - GLO - 2658.48')
 N 00°03'32" W 2660.11' LOT 3
 N 36°58'24" W 306.03'
 LOT 4
 N 18°51'01" W 1892.64'
 793.49' (TIC)
 FBC "1916" FBC "1939"
 (N 89°36'28" E 2673.94')
 (N 89°57' E - GLO - 5320.92')
 9+69.25 SECTION LINE
 N 89°37'30" E 2655.36' FBC "1939"
 31+67.92
 28+61.89 SECTION LINE
 P. I. OF 18°07'23" LT.
 (N 0°19' E - GLO - 5310.36')
 N 00°08'00" E 2654.84' FBC "1939"
 N 00°10'32" E 2664.36' FBC "1939"
 (N 0°19' E - GLO - 5310.36')

SCALE: 1" = 1000'
DATE: 5/31/17
SURVEYED BY: JM/EF
DRAWN BY: CMJ
APPROVED BY: RMH
SHEET: 4 OF 10

XTO ENERGY, INC.
PROPOSED ROW 5 NORTH/SOUTH TRUNK LINE
SECTION 24, T25S, R30E,
N. M. P. M., EDDY CO., NEW MEXICO



DESCRIPTION

A strip of land 150 feet wide, being 4,090.38 feet or 247.902 rods in length, lying in Section 24, Township 25 South, Range 30 East, N. M. P. M., Eddy County, New Mexico, being 75 feet left and 75 feet right of the following described survey of a centerline across B. L. M. land:

BEGINNING at Engr. Sta. 31+67.92, a point on the East line of Section 24, which bears, S 00°03'32" E, 619.06 feet from a brass cap, stamped "1916", found for the East quarter corner of Section 24;

Thence N 36°58'24" W, 4,090.38 feet to Engr. Sta. 72+58.30, a point on the North line of Section 24, which bears, N 89°48'23" E, 203.94 feet from a brass cap, stamped "1940", found for the North quarter corner of Section 24.

Said strip of land contains 14.085 acres, more or less, and is allocated by forties as follows:

NE 1/4 SE 1/4	46.807 Rods	2.659 Acres
SE 1/4 NE 1/4	87.351 Rods	4.963 Acres
SW 1/4 NE 1/4	13.159 Rods	0.748 Acres
NW 1/4 NE 1/4	100.585 Rods	5.715 Acres

SCALE: 1" = 1000'
0 500' 1000'

BEARINGS ARE GRID NAD 83
NM EAST
DISTANCES ARE HORIZ. GROUND.

LEGEND

- () RECORD DATA - GLO
- ◆ FOUND MONUMENT AS NOTED
- PROPOSED NORTH/SOUTH TRUNK LINE

I, R. M. Howett, a N. M. Professional Surveyor, hereby certify that I prepared this plat from an actual survey made on the ground under my direct supervision, said survey and plat meet the Min. Stds. for Land Surveying in the State of N. M. and are true and correct to the best of my knowledge and belief.

Robert M. Howett
Robert M. Howett NM PS 19680



Copyright 2016 - All Rights Reserved

NO.	REVISION	DATE

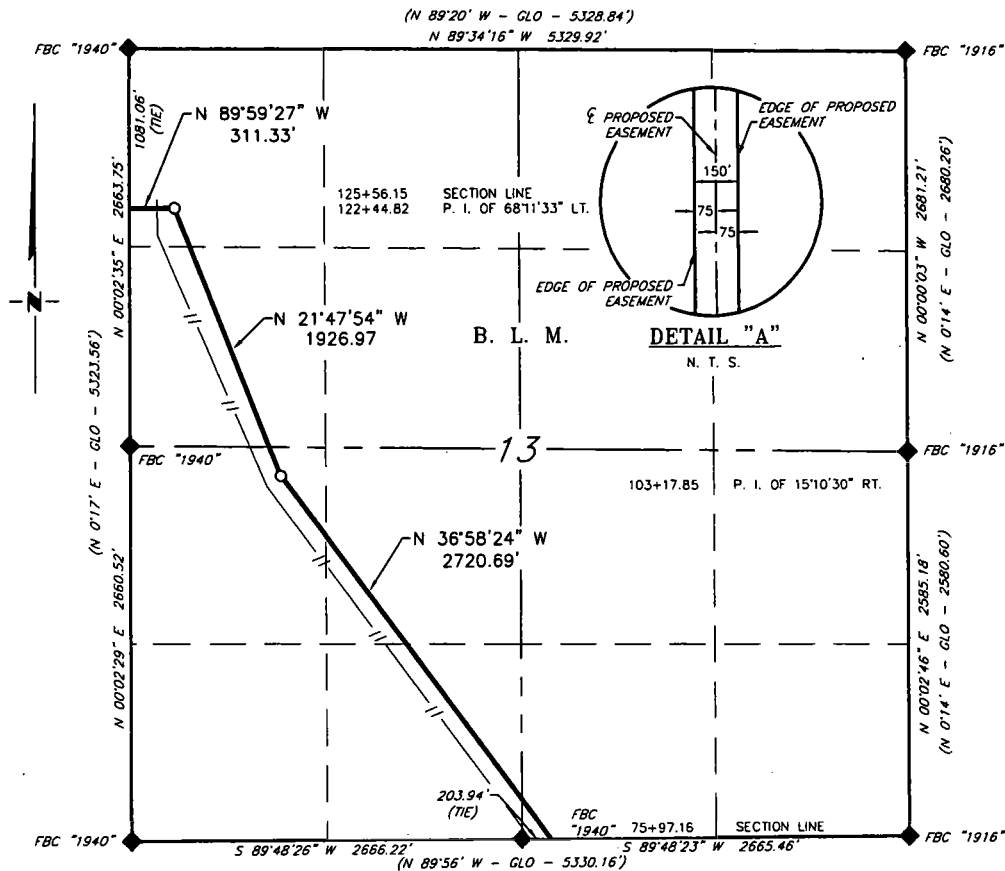
JOB NO.: LS1706366A
DWG. NO.: 1706366A-5

RRC

308 W. BROADWAY ST., HOBBS, NM 88240 (575) 964-8200

SCALE: 1" = 1000'
DATE: 5/31/17
SURVEYED BY: JM/EF
DRAWN BY: CMJ
APPROVED BY: RMH
SHEET: 5 OF 10

XTO ENERGY, INC.
PROPOSED ROW 5 NORTH/SOUTH TRUNK LINE
SECTION 13, T25S, R30E,
N. M. P. M., EDDY CO., NEW MEXICO



DESCRIPTION

A strip of land 150 feet wide, being 5,297.85 feet or 321.082 rods in length, lying in Section 13, Township 25 South, Range 30 East, N. M. P. M., Eddy County, New Mexico, being 75 feet left and 75 feet right of the following described survey of a centerline across B. L. M. land:

BEGINNING at Engr. Sta. 72+58.30, a point on the South line of Section 13, which bears, N 89°48'23" E, 203.94 feet from a brass cap, stamped "1940", found for the South quarter corner of Section 13;

Thence N 36°58'24" W, 3,059.55 feet, to Engr. Sta. 103+17.85 a P. I. of 15°10'30" right;

Thence N 21°47'54" W, 1,926.97 feet, to Engr. Sta. 122+44.82 a P. I. of 68°11'33" left;

Thence N 89°59'27" W, 311.33 feet to Engr. Sta. 125+56.15, a point on the West line of Section 13, which bears, S 00°02'35" W, 1,081.06 feet from a brass cap, stamped "1940", found for the Northwest corner of Section 13.

Said strip of land contains 18.243 acres, more or less, and is allocated by forties as follows:

SW 1/4 SE 1/4	20.537 Rods	1.167 Acres
SE 1/4 SW 1/4	79.117 Rods	4.495 Acres
NE 1/4 SW 1/4	55.105 Rods	3.131 Acres
NW 1/4 SW 1/4	43.483 Rods	2.471 Acres
SW 1/4 NW 1/4	87.357 Rods	4.963 Acres
NW 1/4 NW 1/4	35.483 Rods	2.016 Acres

SCALE: 1" = 1000'
0 500' 1000'

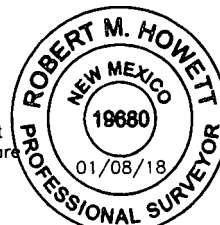
BEARINGS ARE GRID NAD 83
NM EAST
DISTANCES ARE HORIZ. GROUND.

LEGEND

- () RECORD DATA - GLO
- ◆ FOUND MONUMENT AS NOTED
- PROPOSED NORTH/SOUTH TRUNK LINE

I, R. M. Howett, a N. M. Professional Surveyor, hereby certify that I prepared this plat from an actual survey made on the ground under my direct supervision, said survey and plat meet the Min. Stds. for Land Surveying in the State of N. M. and are true and correct to the best of my knowledge and belief.

Robert M. Howett
Robert M. Howett NM PS 19680



Copyright 2016 - All Rights Reserved

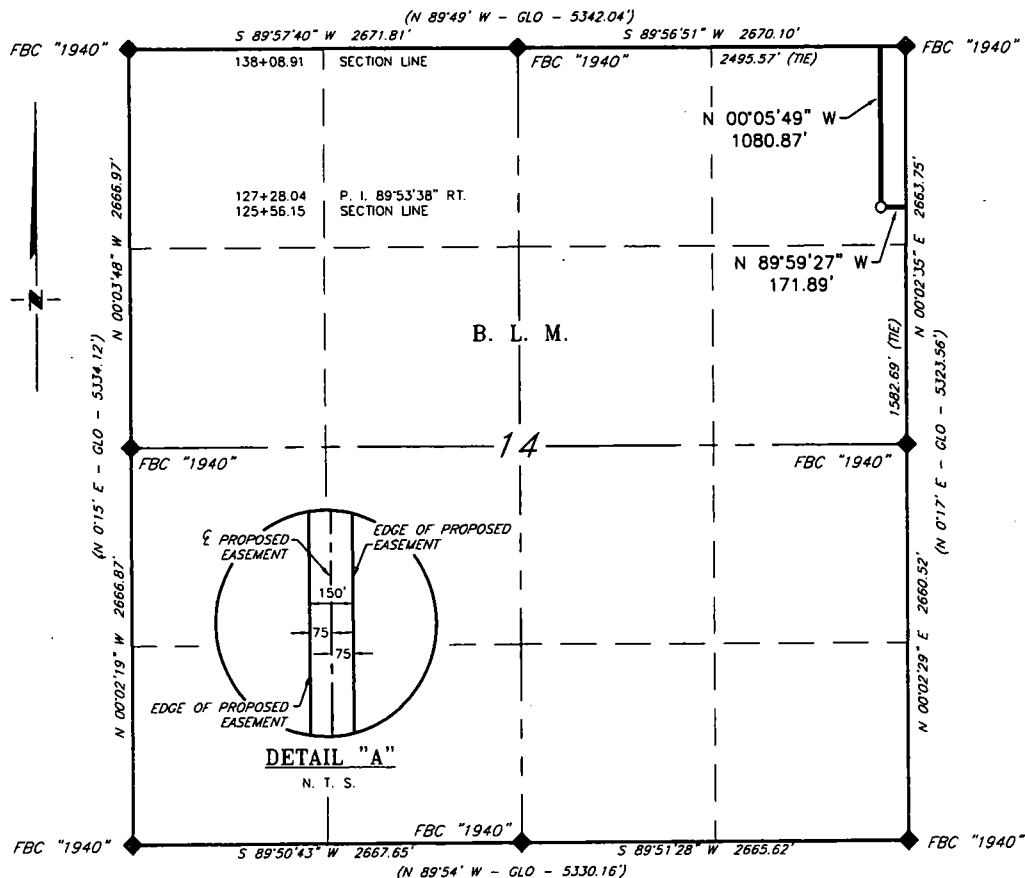
NO.	REVISION	DATE
JOB NO.:	LS1706366A	
DWG. NO.:	1706366A-6	

RRC

308 W. BROADWAY ST., HOBBS, NM 88240 (575) 964-8200

SCALE: 1" = 1000'
DATE: 5/31/17
SURVEYED BY: JM/EF
DRAWN BY: CMJ
APPROVED BY: RMH
SHEET: 6 OF 10

XTO ENERGY, INC.
PROPOSED ROW 5 NORTH/SOUTH TRUNK LINE
SECTION 14, T25S, R30E,
N. M. P. M., EDDY CO., NEW MEXICO



DESCRIPTION

A strip of land 150 feet wide, being 1,252.76 feet or 75.925 rods in length, lying in Section 14, Township 25 South, Range 30 East, N. M. P. M., Eddy County, New Mexico, being 75 feet left and 75 feet right of the following described survey of a centerline across B. L. M. land:

BEGINNING at Engr. Sta. 125+56.15, a point on the East line of Section 14, which bears, N 00°02'35" E, 1,582.69 feet from a brass cap, stamped "1940", found for the East quarter corner of Section 14;

Thence N 89°59'27" W, 171.89 feet, to Engr. Sta. 127+28.04 a P. I. of 89°53'38" right;

Thence N 00°05'49" W, 1,080.87 feet to Engr. Sta. 138+08.91, a point on the North line of Section 14, which bears, S 89°56'51" W, 2,495.57 feet from a brass cap, stamped "1940", found for the North quarter corner of Section 14.

Said strip of land contains 4.314 acres, more or less, and is allocated by forties as follows:

NE 1/4 NE 1/4 75.925 Rods 4.314 Acres

SCALE: 1" = 1000'

0 500' 1000'

BEARINGS ARE GRID NAD 83
 NM EAST
 DISTANCES ARE HORIZ. GROUND.

LEGEND

() RECORD DATA - GLO

◆ FOUND MONUMENT
 AS NOTED

PROPOSED NORTH/SOUTH
 TRUNK LINE

I, R. M. Howett, a N. M. Professional Surveyor, hereby certify that I prepared this plat from an actual survey made on the ground under my direct supervision, said survey and plat meet the Min. Stds. for Land Surveying in the State of N. M. and are true and correct to the best of my knowledge and belief.

Robert M. Howett

Robert M. Howett NM PS 19680

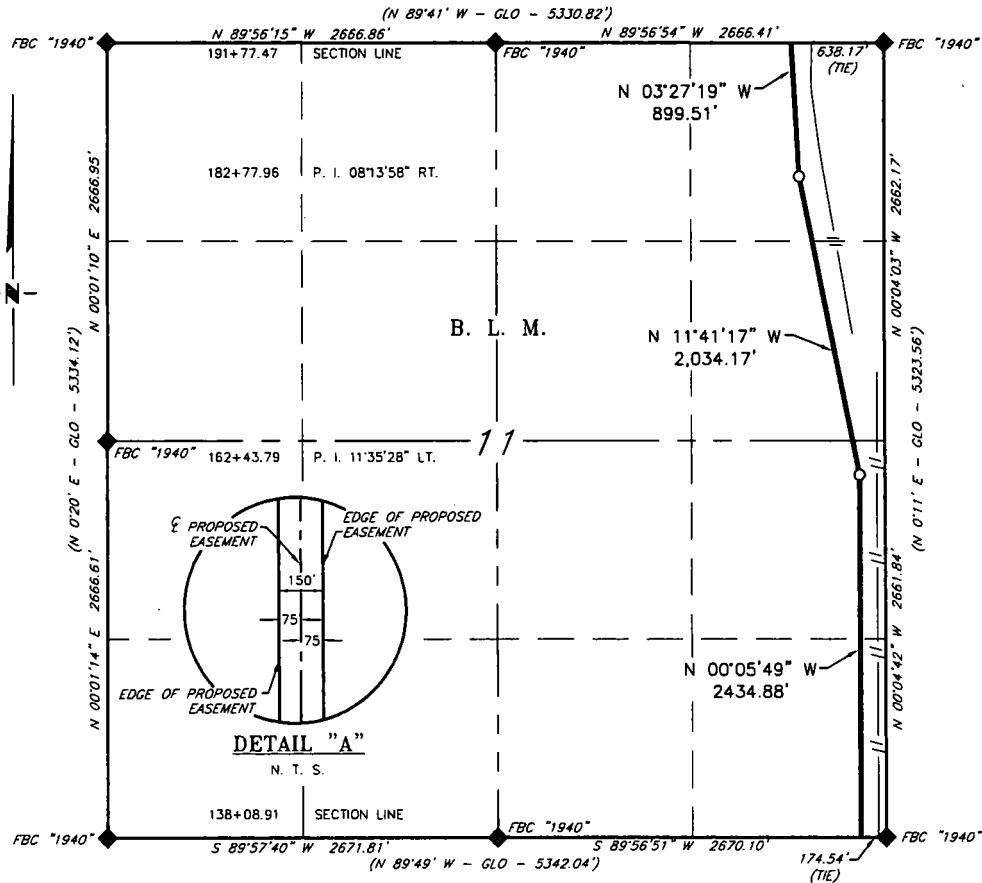


Copyright 2016 - All Rights Reserved

<div style="text-align: center;"> </div>			SCALE: 1" = 1000'
			DATE: 5/31/17
			SURVEYED BY: JM/EF
			DRAWN BY: CMJ
NO.	REVISION	DATE	APPROVED BY: RMH
JOB NO.:	LS1706366A		SHEET: 7 OF 10
DWG. NO.:	1706366A-7		

308 W. BROADWAY ST., HOBBS, NM 88240 (575) 964-8200

XTO ENERGY, INC.
PROPOSED ROW 5 NORTH/SOUTH TRUNK LINE
SECTION 11, T25S, R30E,
N. M. P. M., EDDY CO., NEW MEXICO



DESCRIPTION

A strip of land 150 feet wide, being 5,368.56 feet or 325.367 rods in length, lying in Section 11, Township 25 South, Range 30 East, N. M. P. M., Eddy County, New Mexico, being 75 feet left and 75 feet right of the following described survey of a centerline across B. L. M. land:

BEGINNING at Engr. Sta. 138+08.91, a point on the South line of Section 11, which bears, S 89°56'51" W, 174.54 feet from a brass cap, stamped "1940", found for the Southeast corner of Section 11;

Thence N 00°05'49" W, 2,434.88 feet, to Engr. Sta. 162+43.79 a P. I. of 11°35'28" left;

Thence N 11°41'17" W, 2,034.17 feet, to Engr. Sta. 182+77.96 a P. I. of 08°13'58" right;

Thence N 03°27'19" W, 899.51 feet, to Engr. Sta. 191+77.47, a point on the North line of Section 11, which bears, N 89°56'54" W, 638.17 feet from a brass cap, stamped "1940", found for the Northeast corner of Section 11.

Said strip of land contains 18.487 acres, more or less, and is allocated by forties as follows:

SE 1/4 SE 1/4	80.667 Rods	4.583 Acres
NE 1/4 SE 1/4	80.959 Rods	4.601 Acres
SE 1/4 NE 1/4	82.394 Rods	4.681 Acres
NE 1/4 NE 1/4	81.347 Rods	4.622 Acres

SCALE: 1" = 1000'
0 500' 1000'

BEARINGS ARE GRID NAD 83
NM EAST
DISTANCES ARE HORIZ. GROUND.

LEGEND

() RECORD DATA - GLO

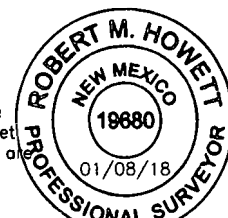
◆ FOUND MONUMENT
AS NOTED

PROPOSED NORTH/SOUTH
TRUNK LINE

I, R. M. Howett, a N. M. Professional Surveyor, hereby certify that I prepared this plat from an actual survey made on the ground under my direct supervision, said survey and plat meet the Min. Stds. for Land Surveying in the State of N. M. and are true and correct to the best of my knowledge and belief.

Robert M. Howett

Robert M. Howett NM PS 19680



Copyright 2016 - All Rights Reserved

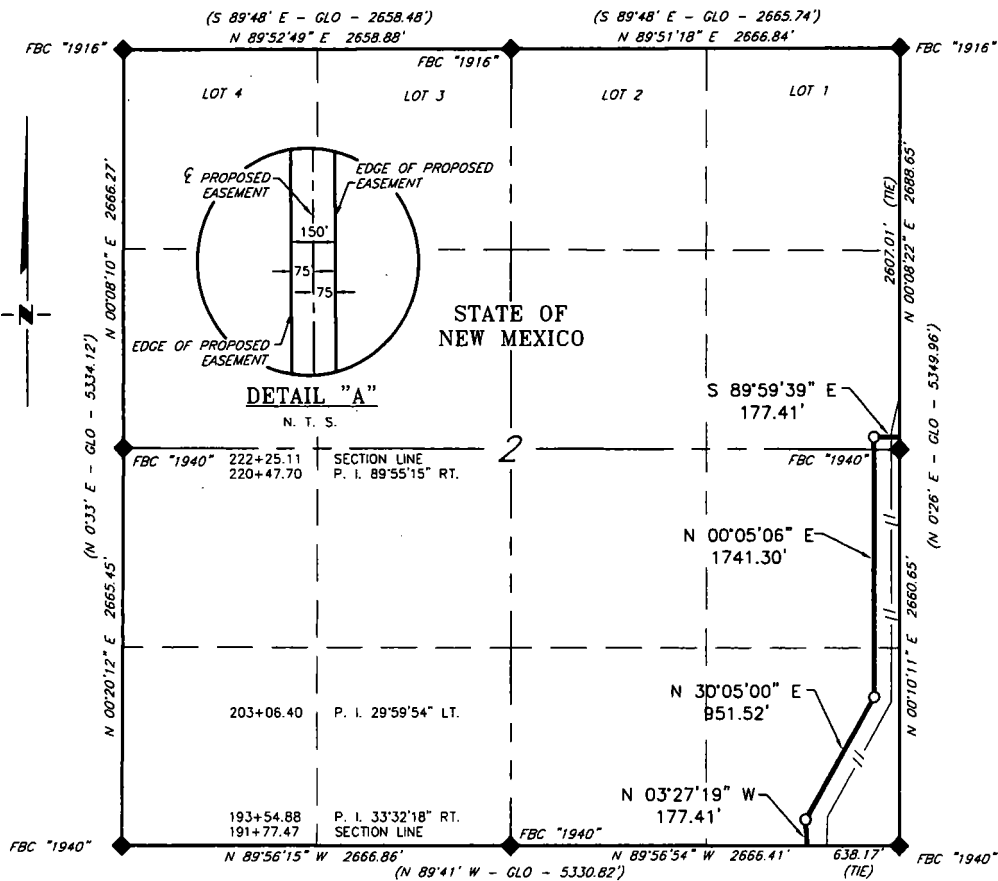
NO.	REVISION	DATE
JOB NO.:	LS1706366A	
DWG. NO.:	1706366A-8	

RRC

308 W. BROADWAY ST., HOBBS, NM 88240 (575) 964-8200

SCALE: 1" = 1000'
DATE: 5/31/17
SURVEYED BY: JM/EF
DRAWN BY: CMJ
APPROVED BY: RMH
SHEET: 8 OF 10

XTO ENERGY, INC.
PROPOSED ROW 5 NORTH/SOUTH TRUNK LINE
SECTION 2, T25S, R30E,
N. M. P. M., EDDY CO., NEW MEXICO



DESCRIPTION

A strip of land 150 feet wide, being 3,047.64 feet or 184.705 rods in length, lying in Section 2, Township 25 South, Range 30 East, N. M. P. M., Eddy County, New Mexico, being 75 feet left and 75 feet right of the following described survey of a centerline across State of New Mexico land:

BEGINNING at Engr. Sta. 191+77.47, a point on the South line of Section 2, which bears, N 89°56'54\" W, 638.17 feet from a brass cap, stamped "1940", found for the Southeast corner of Section 2;

Thence N 03°27'19\" W, 177.41 feet, to Engr. Sta. 193+54.88 a P. I. of 33°32'18\" right;

Thence N 30°05'00\" E, 951.52 feet, to Engr. Sta. 203+06.40 a P. I. of 29°59'54\" left;

Thence N 00°05'06\" E, 1,741.30 feet, to Engr. Sta. 220+47.70 a P. I. of 89°55'15\" right;

Thence S 89°59'39\" E, 177.41 feet to Engr. Sta. 222+25.11 a point on the East line of Section 2, which bears, S 00°08'22\" W, 2,607.01 feet from a brass cap, stamped "1916", found for the Northeast corner of Section 2.

Said strip of land contains 10.495 acres, more or less, and is allocated by forties as follows:

SCALE: 1" = 1000'	SE 1/4 SE 1/4	88.393 Rods	5.022 Acres
0 500' 1000'	NE 1/4 SE 1/4	80.631 Rods	4.582 Acres
	SE 1/4 NE 1/4	15.681 Rods	0.891 Acres

BEARINGS ARE GRID NAD 83
 NM EAST
 DISTANCES ARE HORIZ. GROUND.

LEGEND

() RECORD DATA - GLO

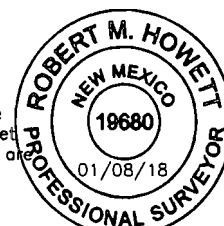
FOUND MONUMENT
 AS NOTED

PROPOSED NORTH/SOUTH
 TRUNK LINE

I, R. M. Howett, a N. M. Professional Surveyor, hereby certify that I prepared this plat from an actual survey made on the ground under my direct supervision, said survey and plat meet the Min. Stds. for Land Surveying in the State of N. M. and are true and correct to the best of my knowledge and belief.

Robert M. Howett
 Robert M. Howett NM PS 19680

Copyright 2016 - All Rights Reserved



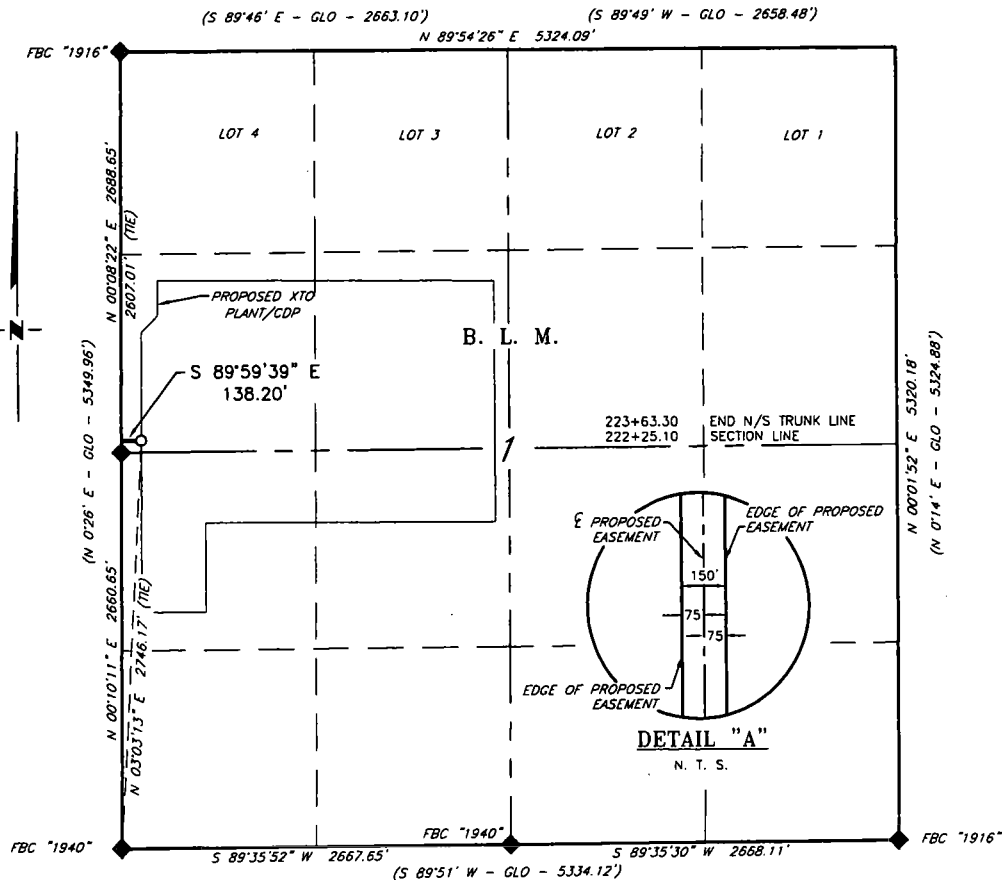
NO.	REVISION	DATE

RRC

308 W. BROADWAY ST., HOBBS, NM 88240 (575) 964-8200

SCALE: 1" = 1000'
DATE: 5/31/17
SURVEYED BY: JM/EF
DRAWN BY: CMJ
APPROVED BY: RMH
SHEET: 9 OF 10

XTO ENERGY, INC.
PROPOSED ROW 5 NORTH/SOUTH TRUNK LINE
SECTION 1, T25S, R30E,
N. M. P. M., EDDY CO., NEW MEXICO



DESCRIPTION

A strip of land 150 feet wide, being 138.20 feet or 8.376 rods in length, lying in Section 1, Township 25 South, Range 30 East, N. M. P. M., Eddy County, New Mexico, being 75 feet left and 75 feet right of the following described survey of a centerline across B. L. M. land:

BEGINNING at Engr. Sta. 222+25.11, a point on the West line of Section 1, which bears, S 00°08'22" W, 2,607.01 feet from a brass cap, stamped "1916", found for the Northwest corner of Section 1;

Thence S 89°59'39" E, 138.20 feet to Engr. Sta. 223+63.31, the End of Survey, a point in the Northwest quarter of Section 1, which bears, N 03°03'13" E, 2,746.17 feet from a brass cap, stamped "1940", found for the Southwest corner of Section 1.

Said strip of land contains 0.476 acres, more or less, and is allocated by forties as follows:

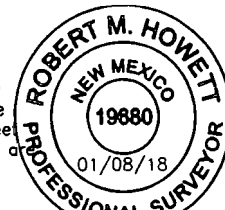
SW 1/4 NW 1/4 8.376 Rods 0.476 Acres

SCALE: 1" = 1000'
 0 500' 1000'
 BEARINGS ARE GRID NAD 83
 NM EAST
 DISTANCES ARE HORIZ. GROUND.

LEGEND
 () RECORD DATA - GLO
 FOUND MONUMENT
 AS NOTED
 PROPOSED NORTH/SOUTH
 TRUNK LINE

I, R. M. Howett, a N. M. Professional Surveyor, hereby certify that I prepared this plat from an actual survey made on the ground under my direct supervision, said survey and plat meet the Min. Stds. for Land Surveying in the State of N. M. and are true and correct to the best of my knowledge and belief.

Robert M. Howett
 Robert M. Howett NM PS 19680



Copyright 2016 - All Rights Reserved

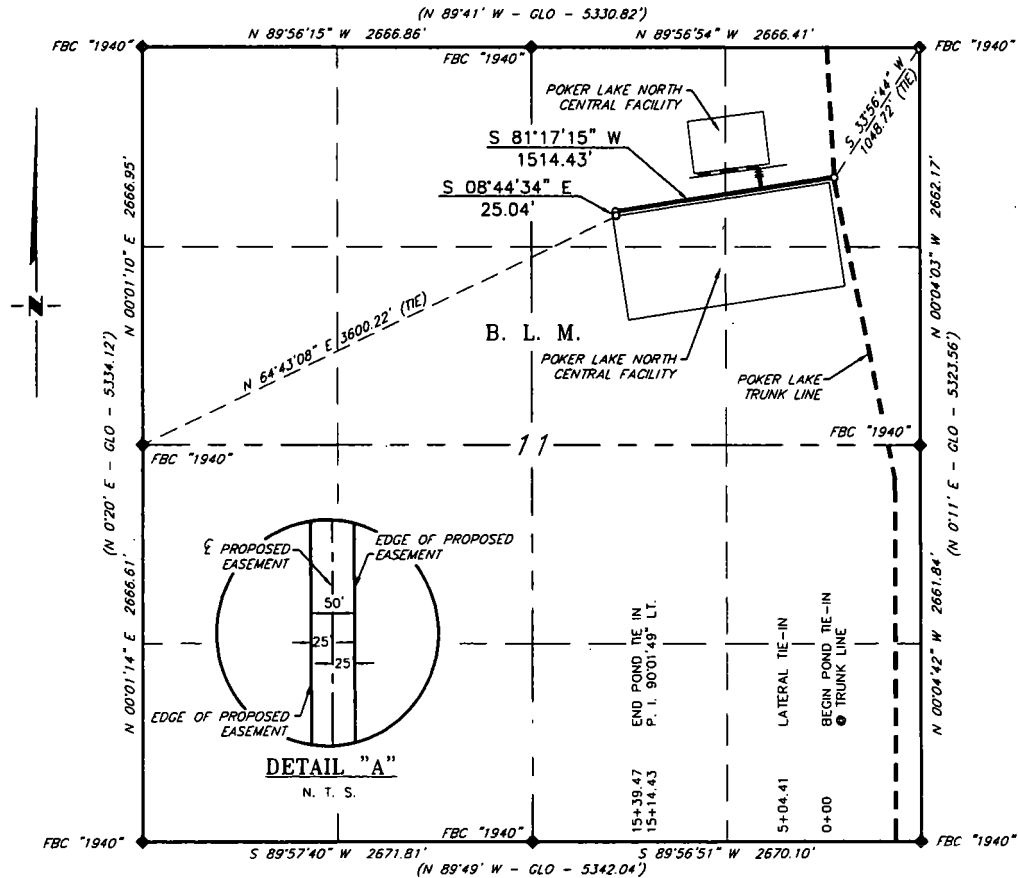
NO.	REVISION	DATE
JOB NO.:	LS1706366A	
DWG. NO.:	1706366A-1	

RRC

308 W. BROADWAY ST., HOBBS, NM 88240 (575) 964-8200

SCALE:	1" = 1000'
DATE:	5/31/17
SURVEYED BY:	JM/EF
DRAWN BY:	LA
APPROVED BY:	RMH
SHEET:	10 OF 10

XTO ENERGY, INC.
PROPOSED TIE-IN TO THE POKER LAKE UNIT CENTRAL POND
SECTION 11, T25S, R30E,
N. M. P. M., EDDY CO., NEW MEXICO



DESCRIPTION

A strip of land 50 feet wide, being 1,539.47 feet or 93.301 rods in length, lying in Section 11, Township 25 South, Range 30 East, N. M. P. M., Eddy County, New Mexico, being 25 feet left and 25 feet right of the following described survey of a centerline across B. L. M. land:

BEGINNING at Engr. Sta. 0+00, a point in the Northeast quarter of Section 11, which bears, S 33°56'44" W, 1,048.72 feet from a brass cap, stamped "1940", found for the Northeast corner of Section 11;

Thence S 81°17'15" W, 1,514.43 feet, to Engr. Sta. 15+14.43, a P. I. of 90°01'49" left;

Thence S 08°44'34" E, 25.04 feet, to Engr. Sta. 15+39.47, the End of Survey, a point in the Northeast quarter of Section 11, which bears, N 64°43'08" E, 3,600.22 feet from a brass cap, stamped "1940", found for the West quarter corner of Section 11.

Said strip of land contains 1.767 acres, more or less, and is allocated by forties as follows:

NE 1/4 NE 1/4	45.784 Rods	0.867 Acres
NW 1/4 NE 1/4	47.517 Rods	0.900 Acres

SCALE: 1" = 1000'

0 500' 1000'

BEARINGS ARE GRID NAD 83
 NM EAST
 DISTANCES ARE HORIZ. GROUND.

LEGEND

() RECORD DATA - GLO

◆ FOUND MONUMENT
 AS NOTED

— PROPOSED POND TIE-IN

I, R. M. Howett, a N. M. Professional Surveyor, hereby certify that I prepared this plat from an actual survey made on the ground under my direct supervision, said survey and plat meet the Min. Stds. for Land Surveying in the State of N. M. and are true and correct to the best of my knowledge and belief.

Robert M. Howett

Robert M. Howett NM PS 19680



Copyright 2016 - All Rights Reserved

NO.	REVISION	DATE
JOB NO.:	LS1708576	
DWG. NO.:	1708576-1	

RRC

308 W. BROADWAY ST., HOBBS, NM 88240 (575) 964-8200

SCALE: 1" = 1000'

DATE: 9/05/17

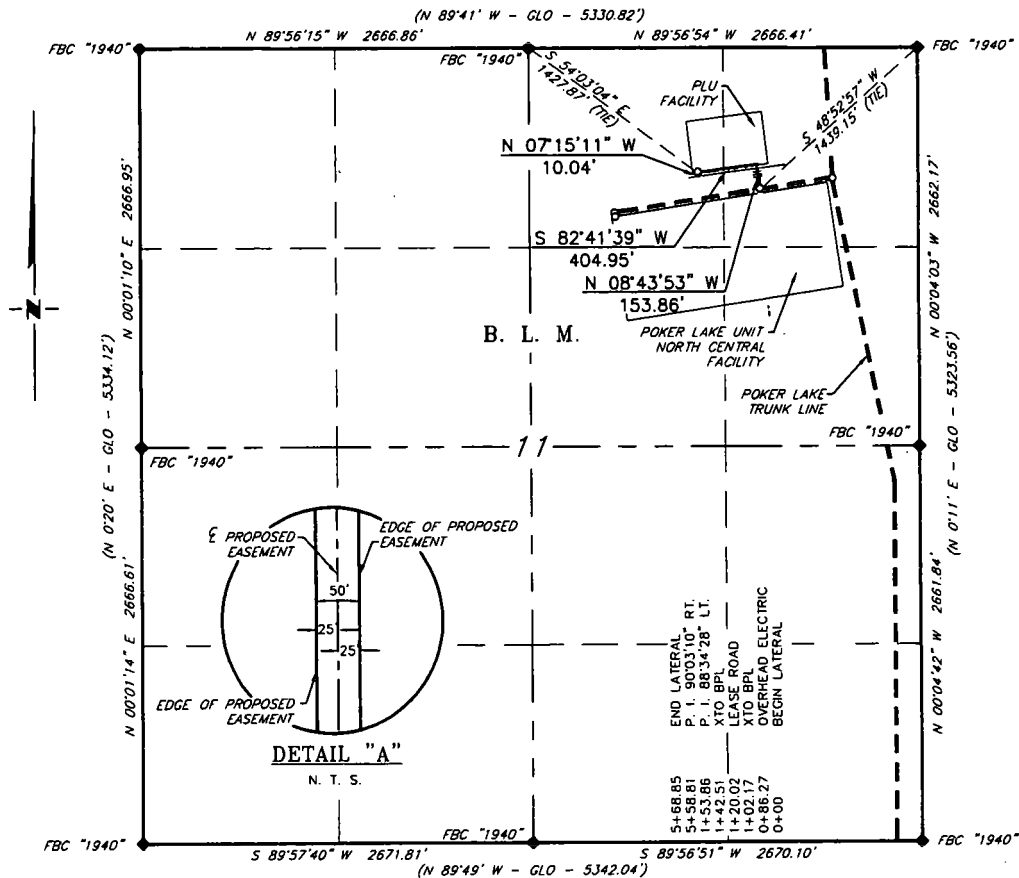
SURVEYED BY: JM/EF

DRAWN BY: LPS

APPROVED BY: RMH

SHEET: 1 OF 2

XTO ENERGY, INC.
PROPOSED LATERAL TO THE POKER LAKE UNIT CENTRAL POND TIE-IN
SECTION 11, T25S, R30E,
N. M. P. M., EDDY CO., NEW MEXICO



DESCRIPTION

A strip of land 50 feet wide, being 568.85 feet or 34.476 rods in length, lying in Section 11, Township 25 South, Range 30 East, N. M. P. M., Eddy County, New Mexico, being 25 feet left and 25 feet right of the following described survey of a centerline across B. L. M. land:

BEGINNING at Engr. Sta. 0+00, a point in the Northeast quarter of Section 11, which bears, S 48°52'57" W, 1,439.15 feet from a brass cap, stamped "1940", found for the Northeast corner of Section 11;

Thence N 08°43'53" W, 153.86 feet, to Engr. Sta. 1+53.86, a P. I. of 88°34'28" left;

Thence S 82°41'39" W, 404.95 feet, to Engr. Sta. 5+58.81, a P. I. of 90°03'10" right;

Thence N 07°15'11" W, 10.04 feet, to Engr. Sta. 5+68.85, the End of Survey, a point in the Northeast quarter of Section 11, which bears, S 54°03'04" E, 1,427.87 feet from a brass cap, stamped "1940", found for the North quarter corner of Section 11.

Said strip of land contains 0.653 acres, more or less, and is allocated by forties as follows:

NE 1/4 NE 1/4	23.068 Rods	0.437 Acres
NW 1/4 NE 1/4	11.408 Rods	0.216 Acres

SCALE: 1" = 1000'
0 500' 1000'

BEARINGS ARE GRID NAD 83
NM EAST
DISTANCES ARE HORIZ. GROUND.

LEGEND

() RECORD DATA - GLO

◆ FOUND MONUMENT
AS NOTED

— PROPOSED LATERAL

I, R. M. Howett, a N. M. Professional Surveyor, hereby certify that I prepared this plat from an actual survey made on the ground under my direct supervision, said survey and plat meet the Min. Stds. for Land Surveying in the State of N. M. and are true and correct to the best of my knowledge and belief.

Robert M. Howett

Robert M. Howett NM PS 19680



Copyright 2016 - All Rights Reserved

NO.	REVISION	DATE
JOB NO.:	LS1708576	
DWG. NO.:	1708576-2	

RRC

308 W. BROADWAY ST., HOBBS, NM 88240 (575) 964-8200

SCALE: 1" = 1000'
DATE: 9/05/17
SURVEYED BY: JM/EF
DRAWN BY: LPS
APPROVED BY: RMH
SHEET: 2 OF 2

Company Reference: Bopco, LP

WELL NO. & NAME: Poker Lake Unit CVX JV BS 24H

PROJECT: Poker Lake Unit North South Connector

STANDARD STIPULATIONS FOR OIL AND GAS RELATED SITES

A copy of the application (Grant/Sundry Notice) and attachments, including stipulations and map, will be on location during construction. BLM personnel may request to view a copy of your permit during construction to ensure compliance with all stipulations.

The holder agrees to comply with the following stipulations to the satisfaction of the Authorized Officer, BLM.

1. The holder shall indemnify the United States against any liability for damage to life or property arising from the occupancy or use of public lands under this grant and for all response costs, penalties, damages, claims, and other costs arising from the provisions of the Resource Conservation and Recovery Act (RCRA), 42 U.S.C. Chap. 82, Section 6901 et. seq., from the Comprehensive Environmental Response, Compensation and Liability Act (CERCLA), 42 U.S.C. Chap. 109, Section 9601 et. seq., and from other applicable environmental statutes.
2. The holder shall comply with all applicable Federal laws and regulations existing or hereafter enacted or promulgated. In any event, the holder shall comply with the Toxic Substances Control Act of 1976, as amended (15 U.S.C. 2601, et. seq.) with regard to any toxic substances that are used, generated by or stored on the right-of-way or on facilities authorized by this grant. (See 40 CFR, Part 702-799 and especially, provisions on polychlorinated biphenyls, 40 CFR 761.1-761.193.) Additionally, any release of toxic substances (leaks, spills, etc.) in excess of the reportable quantity established by 40 CFR, Part 117 shall be reported as required by the Comprehensive Environmental Response, Compensation and Liability Act, Section 102b. A copy of any report required or requested by any Federal agency or State government as a result of a reportable release or spill of any toxic substances shall be furnished to the Authorized Officer concurrent with the filing of the reports to the involved Federal agency or State government.
3. The holder agrees to indemnify the United States against any liability arising from the release of any hazardous substance or hazardous waste (as these terms are defined in the Comprehensive Environmental Response, Compensation and Liability Act of 1980, 42 U.S.C. 9601, et. seq. or the Resource Conservation and Recovery Act, 42 U.S.C. 6901, et. seq.) on the right-of-way (unless the release or threatened release is wholly unrelated to the right-of-way holder's activity on the right-of-way). This agreement applies without regard to whether a release is caused by the holder, its agent, or unrelated third parties.
4. If, during any phase of the construction, operation, maintenance, or termination of the site or related pipeline(s), any oil or other pollutant should be discharged from site facilities, the pipeline(s) or from containers or vehicles impacting Federal lands, the control and total removal, disposal, and cleanup of such oil or other pollutant, wherever found, shall be the responsibility of

the holder, regardless of fault. Upon failure of the holder to control, dispose of, or clean up such discharge on or affecting Federal lands, or to repair all damages to Federal lands resulting therefrom, the Authorized Officer may take such measures as deemed necessary to control and cleanup the discharge and restore the area, including, where appropriate, the aquatic environment and fish and wildlife habitats, at the full expense of the holder. Such action by the Authorized Officer shall not relieve the holder of any liability or responsibility.

5. Sites shall be maintained in an orderly, sanitary condition at all times. Waste materials, both liquid and solid, shall be disposed of promptly at an appropriate, authorized waste disposal facility in accordance with all applicable State and Federal laws. "Waste" means all discarded matter including, but not limited to, human waste, trash, garbage, refuse, petroleum products, brines, chemicals, oil drums, ashes, and equipment.

6. The operator will notify the Bureau of Land Management (BLM) authorized officer and nearest Fish and Wildlife Service (FWS) Law Enforcement office within 24 hours, if the operator discovers a dead or injured federally protected species (i.e., migratory bird species, bald or golden eagle, or species listed by the FWS as threatened or endangered) in or adjacent to a pit, trench, tank, exhaust stack, or fence. (If the operator is unable to contact the FWS Law Enforcement office, the operator must contact the nearest FWS Ecological Services office.)

7. All above-ground structures not subject to safety requirements shall be painted by the holder to blend with the natural color of the landscape. The paint used shall be a color which simulates "Standard Environmental Colors" designated by the Rocky Mountain Five-State Interagency Committee. The color selected for this project is **Shale Green**, Munsell Soil Color Chart Number 5Y 4/2.

8. Any cultural and/or paleontological resource (historic or prehistoric site or object) discovered by the holder, or any person working on the holder's behalf, on public or Federal land shall be immediately reported to the Authorized Officer. The holder shall suspend all operations in the immediate area of such discovery until written authorization to proceed is issued by the Authorized Officer. An evaluation of the discovery will be made by the Authorized Officer to determine appropriate actions to prevent the loss of significant cultural or scientific values. The holder will be responsible for the cost of evaluation and any decision as to the proper mitigation measures will be made by the Authorized Officer after consulting with the holder.

9. A sales contract for removal of mineral material (caliche, sand, gravel, fill dirt) from an authorized pit, site, or on location must be obtained from the BLM prior to commencing construction. There are several options available for purchasing mineral material: contact the BLM office (575-234-5972).

10. The operator shall be held responsible if noxious weeds become established within the areas of operations. Weed control shall be required on the disturbed land where noxious weeds exist, which includes the roads, pads, associated pipeline corridor, and adjacent land affected by the establishment of weeds due to this action. The operator shall consult with the Authorized Officer

for acceptable weed control methods, which include following EPA and BLM requirements and policies.

11. Once the site is no longer in service or use, the site must undergo final abandonment. At final abandonment, the site and access roads must undergo "final" reclamation so that the character and productivity of the land are restored. Earthwork for final reclamation must be completed within six (6) months of the abandonment of the site. All pads and facility locations and roads must be reclaimed to a satisfactory revegetated, safe, and stable condition, unless an agreement is made with the landowner or BLM to keep the road and/or pad intact. After all disturbed areas have been satisfactorily prepared, these areas need to be revegetated with the seed mixture provided. Seeding should be accomplished by drilling on the contour whenever practical or by other approved methods. Seeding may need to be repeated until revegetation is successful, as determined by the BLM.

Operators shall contact a BLM surface protection specialist prior to surface abandonment operations for site specific objectives (Jim Amos: 575-234-5909).

12. The holder shall stockpile an adequate amount of topsoil where blading occurs. The topsoil to be stripped is approximately 6 inches in depth. The topsoil will be segregated from other spoil piles. The topsoil will be used for final reclamation.

13. The holder will reseed all disturbed areas. Seeding will be done according to the attached seeding requirements, using the following seed mix.

- | | |
|--|--|
| <input type="checkbox"/> seed mixture 1 | <input type="checkbox"/> seed mixture 3 |
| <input type="checkbox"/> seed mixture 2 | <input type="checkbox"/> seed mixture 4 |
| <input checked="" type="checkbox"/> seed mixture 2/LPC | <input type="checkbox"/> Aplomado Falcon Mixture |

14. In those areas where erosion control structures are required to stabilize soil conditions, the holder shall install such structures as are suitable for the specific soil conditions being encountered and which are in accordance with sound management practices. Any earth work will require prior approval by the Authorized Officer.

15. Open-topped Tanks - The operator will take actions necessary to prevent wildlife and livestock access, including avian wildlife, to all open-topped tanks that contain or have the potential to contain salinity sufficient to cause harm to wildlife or livestock, hydrocarbons, or Resource Conservation and Recovery Act of 1976-exempt hazardous substances. At a minimum, the operator will net, screen, or cover open-topped tanks to exclude wildlife and livestock and prevent mortality. If the operator uses netting, the operator will cover and secure the open portion of the tank to prevent wildlife entry. The operator will net, screen, or cover the tanks until the operator removes the tanks from the location or the tanks no longer contain substances that could be harmful to wildlife or livestock. Use a maximum netting mesh size of 1 ½ inches. The netting must not be in contact with fluids and must not have holes or gaps

16. The operator will prevent all hazardous, poisonous, flammable, and toxic substances from coming into contact with soil and water. At a minimum, the operator will install and maintain an

impervious secondary containment system for any tank or barrel containing hazardous, poisonous, flammable, or toxic substances sufficient to contain the contents of the tank or barrel and any drips, leaks, and anticipated precipitation. The operator will dispose of fluids within the containment system that do not meet applicable state or U. S. Environmental Protection Agency livestock water standards in accordance with state law; the operator must not drain the fluids to the soil or ground. The operator will design, construct, and maintain all secondary containment systems to prevent wildlife and livestock exposure to harmful substances. At a minimum, the operator will install effective wildlife and livestock enclosure systems such as fencing, netting, expanded metal mesh, lids, and grate covers. Use a maximum netting mesh size of 1 ½ inches.

17. Open-Vent Exhaust Stack Enclosures – The operator will construct, modify, equip, and maintain all open-vent exhaust stacks on production equipment to prevent birds and bats from entering, and to discourage perching, roosting, and nesting. (Recommended enclosure structures on open-vent exhaust stacks are in the shape of a cone.) Production equipment includes, but may not be limited to, tanks, heater-treaters, separators, dehydrators, flare stacks, in-line units, and compressor mufflers.

18. Containment Structures - Proposed production facilities such as storage tanks and other vessels will have a secondary containment structure that is constructed to hold the capacity of 1.5 times the largest tank, plus freeboard to account for precipitation, unless more stringent protective requirements are deemed necessary.

19. Special Stipulations:

Range:

Relocating Range Improvements (water tanks, troughs, pipelines or fences)

- An agreement must be met between Range Allotment Lessee and Operator.
- A *Cooperative Range Improvement Agreement Form 4120-6* must be filled out with Range Allotment Lessee.
- An Archeologist survey must be completed for all Range Improvement Cooperative Agreements.

Range Studies

- Well pads must be 300ft or more from range studies.
- Buried Pipelines must be 200ft or more from range studies.
- In General, all other disturbances must be at least 200ft from range studies, except seismic activities.
- Seismic activity must be at least 100ft from range study plots.

Livestock Water Troughs

- Any disturbances must be at least 200ft from water troughs.

Lesser Prairie-Chicken

Oil and gas activities will not be allowed in lesser prairie-chicken habitat during the period from March 1st through June 15th annually. During that period, other activities that produce noise or involve human activity, such as the maintenance of oil and gas facilities, geophysical exploration other than 3-D operations, and pipeline, road, and well pad construction, will be allowed except between 3:00 am and 9:00 am. The 3:00 am to 9:00 am restriction will not apply to normal, around-the-clock operations, such as venting, flaring, or pumping, which do not require a human presence during this period. Normal vehicle use on existing roads will not be restricted. Exhaust noise from permanent engines must be muffled or otherwise controlled so as not to exceed 75 db measured at 30 ft. from the source of the noise.

Desert Heronries

Surface disturbance will not be allowed within up to 200 meters of active heronries or by delaying activity for up to 120 days, or a combination of both.

Exhaust noise from pump jack engines must be muffled or otherwise controlled so as not to exceed 75 db measured at 30 ft. from the source of the noise.

Seed Mixture for LPC Sand/Shinnery Sites

Holder shall seed all disturbed areas with the seed mixture listed below. The seed mixture shall be planted in the amounts specified in pounds of pure live seed (PLS)* per acre. There shall be no primary or secondary noxious weeds in the seed mixture. Seed will be tested and the viability testing of seed shall be done in accordance with State law(s) and within nine (9) months prior to purchase. Commercial seed shall be either certified or registered seed. The seed container shall be tagged in accordance with State law(s) and available for inspection by the Authorized Officer.

Seed will be planted using a drill equipped with a depth regulator to ensure proper depth of planting where drilling is possible. The seed mixture will be evenly and uniformly planted over the disturbed area (smaller/heavier seeds have a tendency to drop the bottom of the drill and are planted first). Holder shall take appropriate measures to ensure this does not occur. Where drilling is not possible, seed will be broadcast and the area shall be raked or chained to cover the seed. When broadcasting the seed, the pounds per acre are to be doubled. Seeding shall be repeated until a satisfactory stand is established as determined by the Authorized Officer. Evaluation of growth may not be made before completion of at least one full growing season after seeding.

Species to be planted in pounds of pure live seed* per acre:

<u>Species</u>	<u>lb/acre</u>
Plains Bristlegrass	5lbs/A
Sand Bluestem	5lbs/A
Little Bluestem	3lbs/A
Big Bluestem	6lbs/A
Plains Coreopsis	2lbs/A
Sand Dropseed	1lbs/A

*Pounds of pure live seed:

Pounds of seed x percent purity x percent germination = pounds pure live seed

Company Reference: Bopco, LP

WELL NO. & NAME: Poker Lake Unit CVX JV BS 24H

PROJECT: Poker Lake Unit North South Connector

BURIED PIPELINE STIPULATIONS

A copy of the application (Grant, APD, or Sundry Notice) and attachments, including conditions of approval, survey plat and/or map, will be on location during construction. BLM personnel may request to you a copy of your permit during construction to ensure compliance with all stipulations.

Holder agrees to comply with the following stipulations to the satisfaction of the Authorized Officer:

1. The Holder shall indemnify the United States against any liability for damage to life or property arising from the occupancy or use of public lands under this grant.
2. The Holder shall comply with all applicable Federal laws and regulations existing or hereafter enacted or promulgated. In any event, the holder shall comply with the Toxic Substances Control Act of 1976 as amended, 15 USC 2601 et seq. (1982) with regards to any toxic substances that are used, generated by or stored on the right-of-way or on facilities authorized under this right-of-way grant. (See 40 CFR Part 702-799 and especially, provisions on polychlorinated biphenyls, 40 CFR 761.1-761.193.) Additionally, any release of toxic substances (leaks, spills, etc.) in excess of the reportable quantity established by 40 CFR Part 117 shall be reported as required by the Comprehensive Environmental Response, Compensation, and Liability Act, section 102b. A copy of any report required or requested by any Federal agency or State government as a result of a reportable release or spill of any toxic substances shall be furnished to the authorized officer concurrent with the filing of the reports to the involved Federal agency or State government.
3. The holder agrees to indemnify the United States against any liability arising from the release of any hazardous substance or hazardous waste (as these terms are defined in the Comprehensive Environmental Response, Compensation and Liability Act of 1980, 42 U.S.C. 9601, et seq. or the Resource Conservation and Recovery Act, 42 U.S.C. 6901, et seq.) on the Right-of-Way (unless the release or threatened release is wholly unrelated to the Right-of-Way holder's activity on the Right-of-Way), or resulting from the activity of the Right-of-Way holder on the Right-of-Way. This agreement applies without regard to whether a release is caused by the holder, its agent, or unrelated third parties.
4. If, during any phase of the construction, operation, maintenance, or termination of the pipeline, any oil or other pollutant should be discharged from the pipeline system, impacting Federal lands, the control and total removal, disposal, and cleaning up of such oil or other pollutant, wherever found, shall be the responsibility of holder, regardless of fault. Upon failure of holder to control, dispose of, or clean up such discharge on or affecting Federal lands, or to repair all damages resulting therefrom, on the Federal lands, the Authorized Officer may take such measures as he deems necessary to control and clean up the discharge and restore the area, including where appropriate, the aquatic environment and fish and wildlife habitats, at the full expense of the holder. Such action by the Authorized Officer shall not relieve holder of any responsibility as provided herein.

5. All construction and maintenance activity will be confined to the authorized right-of-way.
6. The pipeline will be buried with a minimum cover of 36 inches between the top of the pipe and ground level.
7. The maximum allowable disturbance for construction in this right-of-way will be 30 feet:
- Blading of vegetation within the right-of-way will be allowed: maximum width of blading operations will not exceed 20 feet. The trench is included in this area. (*Blading is defined as the complete removal of brush and ground vegetation.*)
 - Clearing of brush species within the right-of-way will be allowed: maximum width of clearing operations will not exceed 30 feet. The trench and bladed area are included in this area. (*Clearing is defined as the removal of brush while leaving ground vegetation (grasses, weeds, etc.) intact. Clearing is best accomplished by holding the blade 4 to 6 inches above the ground surface.*)
 - The remaining area of the right-of-way (if any) shall only be disturbed by compressing the vegetation. (*Compressing can be caused by vehicle tires, placement of equipment, etc.*)
8. The holder shall stockpile an adequate amount of topsoil where blading is allowed. The topsoil to be stripped is approximately 6 inches in depth. The topsoil will be segregated from other spoil piles from trench construction. The topsoil will be evenly distributed over the bladed area for the preparation of seeding.
9. The holder shall minimize disturbance to existing fences and other improvements on public lands. The holder is required to promptly repair improvements to at least their former state. Functional use of these improvements will be maintained at all times. The holder will contact the owner of any improvements prior to disturbing them. When necessary to pass through a fence line, the fence shall be braced on both sides of the passageway prior to cutting of the fence. No permanent gates will be allowed unless approved by the Authorized Officer.
10. Vegetation, soil, and rocks left as a result of construction or maintenance activity will be randomly scattered on this right-of-way and will not be left in rows, piles, or berms, unless otherwise approved by the Authorized Officer. The entire right-of-way shall be recontoured to match the surrounding landscape. The backfilled soil shall be compacted and a 6 inch berm will be left over the ditch line to allow for settling back to grade.
11. In those areas where erosion control structures are required to stabilize soil conditions, the holder will install such structures as are suitable for the specific soil conditions being encountered and which are in accordance with sound resource management practices.
12. The holder will reseed all disturbed areas. Seeding will be done according to the attached seeding requirements, using the following seed mix.

- | | |
|------------------------|-----------------------------|
| () seed mixture 1 | () seed mixture 3 |
| () seed mixture 2 | () seed mixture 4 |
| (X) seed mixture 2/LPC | () Aplomado Falcon Mixture |

13. All above-ground structures not subject to safety requirements shall be painted by the holder to blend with the natural color of the landscape. The paint used shall be color which simulates "Standard Environmental Colors" – **Shale Green**, Munsell Soil Color No. 5Y 4/2.

14. The pipeline will be identified by signs at the point of origin and completion of the right-of-way and at all road crossings. At a minimum, signs will state the holder's name, BLM serial number, and the product being transported. All signs and information thereon will be posted in a permanent, conspicuous manner, and will be maintained in a legible condition for the life of the pipeline.

15. The holder shall not use the pipeline route as a road for purposes other than routine maintenance as determined necessary by the Authorized Officer in consultation with the holder before maintenance begins. The holder will take whatever steps are necessary to ensure that the pipeline route is not used as a roadway. As determined necessary during the life of the pipeline, the Authorized Officer may ask the holder to construct temporary deterrence structures.

16. Any cultural and/or paleontological resources (historic or prehistoric site or object) discovered by the holder, or any person working on his behalf, on public or Federal land shall be immediately reported to the Authorized Officer. Holder shall suspend all operations in the immediate area of such discovery until written authorization to proceed is issued by the Authorized Officer. An evaluation of the discovery will be made by the Authorized Officer to determine appropriate actions to prevent the loss of significant cultural or scientific values. The holder will be responsible for the cost of evaluation and any decision as to proper mitigation measures will be made by the Authorized Officer after consulting with the holder.

17. The operator shall be held responsible if noxious weeds become established within the areas of operations. Weed control shall be required on the disturbed land where noxious weeds exist, which includes associated roads, pipeline corridor and adjacent land affected by the establishment of weeds due to this action. The operator shall consult with the Authorized Officer for acceptable weed control methods, which include following EPA and BLM requirements and policies.

18. Escape Ramps - The operator will construct and maintain pipeline/utility trenches [that are not otherwise fenced, screened, or netted] to prevent livestock, wildlife, and humans from becoming entrapped. At a minimum, the operator will construct and maintain escape ramps, ladders, or other methods of avian and terrestrial wildlife escape in the trenches according to the following criteria:

- a. Any trench left open for eight (8) hours or less is not required to have escape ramps; however, before the trench is backfilled, the contractor/operator shall inspect the trench for wildlife, remove all trapped wildlife, and release them at least 100 yards from the trench.
- b. For trenches left open for eight (8) hours or more, earthen escape ramps (built at no more than a 30 degree slope and spaced no more than 500 feet apart) shall be placed in the trench.

19. Special Stipulations:

Watershed:

Bopco LP will coordinate with BLM Authorized Officer and BLM Hydrologist in order to re-route part of the route in Sec. 13, T.25S, R. 30E. with the purpose of avoiding playa feature identified.

When crossing the ephemeral drainages the pipeline will be buried to a minimum depth of 48 inches from the top of pipe to ground level. If crossing a 100-year floodplain, the buried depth must be at least 5 feet from the top of the pipe to ground level. For all water related crossings, gabions and rock aprons will be placed on both up and downstream sides of the pipeline crossing. In addition, curled wood fiber wattles and logs will be placed on the downstream side for sediment control.

Range:

Relocating Range Improvements (water tanks, troughs, pipelines or fences)

- An agreement must be met between Range Allotment Lessee and Operator.
- A *Cooperative Range Improvement Agreement Form 4120-6* must be filled out with Range Allotment Lessee.
- An Archeologist survey must be completed for all Range Improvement Cooperative Agreements.

Range Studies

- Well pads must be 300ft or more from range studies.
- Buried Pipelines must be 200ft or more from range studies.
- In General, all other disturbances must be at least 200ft from range studies, except seismic activities.
- Seismic activity must be at least 100ft from range study plots.

Livestock Water Troughs

- Any disturbances must be at least 200ft from water troughs.

Lesser Prairie-Chicken

Oil and gas activities will not be allowed in lesser prairie-chicken habitat during the period from March 1st through June 15th annually. During that period, other activities that produce noise or involve human activity, such as the maintenance of oil and gas facilities, geophysical exploration other than 3-D operations, and pipeline, road, and well pad construction, will be allowed except between 3:00 am and 9:00 am. The 3:00 am to 9:00 am restriction will not apply to normal, around-the-clock operations, such as venting, flaring, or pumping, which do not require a human presence during this period. Normal vehicle use on existing roads will not be restricted. Exhaust noise from pump jack engines must be muffled or otherwise controlled so as not to exceed 75 db measured at 30 ft. from the source of the noise.

Desert Heronries

Surface disturbance will not be allowed within up to 200 meters of active heronries or by delaying activity for up to 120 days, or a combination of both.

Exhaust noise from pump jack engines must be muffled or otherwise controlled so as not to exceed 75 db measured at 30 ft. from the source of the noise.

Karst Conditions of Approval for Poker Lake North South Connector

BURIED PIPELINES

1. The BLM, Carlsbad Field Office, will be informed immediately if any subsurface drainage channels, passages, or voids are intersected by trenching, and no pipe will be laid in the trench at that point until clearance has been issued by the Authorized Officer.
2. If a void is encountered alignments may be rerouted to avoid the karst feature and lessen; the potential of subsidence or collapse of karst features, buildup of toxic or combustible gas, or other possible impacts to cave and karst resources from the buried pipeline.
3. Special restoration stipulations or realignment may be required at such intersections, if any.
4. A leak detection plan **will be submitted to the BLM Carlsbad Field Office for approval** prior to pipeline installation. The method could incorporate gauges to detect pressure drops, siting valves and lines so they can be visually inspected periodically or installing electronic sensors to alarm when a leak is present. The leak detection plan will incorporate an automatic shut off system that will be installed for proposed pipelines to minimize the effects of an undesirable event.
5. Regular monitoring is required to quickly identify leaks for their immediate and proper treatment.

Seed Mixture for LPC Sand/Shinnery Sites

Holder shall seed all disturbed areas with the seed mixture listed below. The seed mixture shall be planted in the amounts specified in pounds of pure live seed (PLS)* per acre. There shall be no primary or secondary noxious weeds in the seed mixture. Seed will be tested and the viability testing of seed shall be done in accordance with State law(s) and within nine (9) months prior to purchase. Commercial seed shall be either certified or registered seed. The seed container shall be tagged in accordance with State law(s) and available for inspection by the Authorized Officer.

Seed will be planted using a drill equipped with a depth regulator to ensure proper depth of planting where drilling is possible. The seed mixture will be evenly and uniformly planted over the disturbed area (smaller/heavier seeds have a tendency to drop the bottom of the drill and are planted first). Holder shall take appropriate measures to ensure this does not occur. Where drilling is not possible, seed will be broadcast and the area shall be raked or chained to cover the seed. When broadcasting the seed, the pounds per acre are to be doubled. Seeding shall be repeated until a satisfactory stand is established as determined by the Authorized Officer. Evaluation of growth may not be made before completion of at least one full growing season after seeding.

Species to be planted in pounds of pure live seed* per acre:

<u>Species</u>	<u>lb/acre</u>
Plains Bristlegrass	5lbs/A
Sand Bluestem	5lbs/A
Little Bluestem	3lbs/A
Big Bluestem	6lbs/A
Plains Coreopsis	2lbs/A
Sand Dropseed	1lbs/A

*Pounds of pure live seed:

Pounds of seed x percent purity x percent germination = pounds pure live seed