

UNITED STATES  
DEPARTMENT OF THE INTERIOR  
BUREAU OF LAND MANAGEMENTRECEIVED  
OCD Artesia  
AUG 07 2018FORM APPROVED  
OMB No. 1004-0137  
Expires: July 31, 2010

## WELL COMPLETION OR RECOMPLETION REPORT AND LOG

5. Lease Serial No.  
NMNM05312771a. Type of Well ☒ Oil Well ☐ Gas Well ☐ Dry ☐ Other  
b. Type of Completion ☒ New Well ☐ Work Over ☐ Deepen ☐ Plug Back ☐ Diff. Resvr.  
Other \_\_\_\_\_

6. If Indian, Allottee or Tribe Name

7. Unit or CA Agreement Name and No.  
891012406C (NM 709510)2. Name of Operator  
MEWBOURNE OIL COMPANY Contact: JACKIE LATHAN  
E-Mail: jlathan@mewbourne.com8. Lease Name and Well No.  
FORTY NINER RIDGE UNIT 106H3. Address P O BOX 5270  
HOBBS, NM 882413a. Phone No. (include area code)  
Ph: 575-393-59059. API Well No.  
30-015-44204-00-S1

4. Location of Well (Report location clearly and in accordance with Federal requirements)\*

Sec 22 T23S R30E Mer NMP  
At surface SESE 525FSL 496FEL  
Sec 22 T23S R30E Mer NMP  
At top prod interval reported below SESE 876FSL 796FEL  
Sec 15 T23S R30E Mer NMP  
At total depth NENE 109FNL 1130FEL10. Field and Pool, or Exploratory  
FORTY NINER RIDGE11. Sec., T., R., M., or Block and Survey  
or Area Sec 22 T23S R30E Mer NMP12. County or Parish  
EDDY 13. State  
NM14. Date Spudded  
10/08/201715. Date T.D. Reached  
11/30/201716. Date Completed  
☐ D & A ☒ Ready to Prod.  
03/24/201817. Elevations (DF, KB, RT, GL)\*  
3260 GL18. Total Depth: MD 19580  
TVD 9546 19. Plug Back T.D.: MD 19530  
TVD 9546 20. Depth Bridge Plug Set: MD  
TVD21. Type Electric & Other Mechanical Logs Run (Submit copy of each)  
3260 GL22. Was well cored? ☒ No ☐ Yes (Submit analysis)  
Was DST run? ☒ No ☐ Yes (Submit analysis)  
Directional Survey? ☐ No ☒ Yes (Submit analysis)

## 23. Casing and Liner Record (Report all strings set in well)

Hole Size	Size/Grade	Wt. (#/ft.)	Top (MD)	Bottom (MD)	Stage Cementer Depth	No. of Sk. & Type of Cement	Slurry Vol. (BBL)	Cement Top*	Amount Pulled
12.250	9.625 L80	40.0	0	122		0	0	0	
17.500	13.375 J55	54.5	0	425		500	118	0	
8.750	7.000 HCP110	29.0	0	9835		825	351	0	
12.250	9.625 J55	36.0	122	3386		0	0	0	
12.250	9.625 J55	40.0	3386	3722		800	331	0	
6.125	4.500 HCP110	13.5	9109	19535		600	265	0	

## 24. Tubing Record

Size	Depth Set (MD)	Packer Depth (MD)	Size	Depth Set (MD)	Packer Depth (MD)	Size	Depth Set (MD)	Packer Depth (MD)

## 25. Producing Intervals

## 26. Perforation Record

Formation	Top	Bottom	Perforated Interval	Size	No. Holes	Perf. Status
A) BONE SPRING	7670	19580	9905 TO 19528	0.390	1140	OPEN
B)						
C)						
D)						

## 27. Acid, Fracture, Treatment, Cement Squeeze, Etc.

Depth Interval	Amount and Type of Material
9905 TO 19528	18,282,572 GAL SLICKWATER, CARRYING 13,030,340# WHITE 100 MESH SAND & 5,975,423# 30/50 WHITE SAND

## 28. Production - Interval A

Date First Produced	Test Date	Hours Tested	Test Production	Oil BBL	Gas MCF	Water BBL	Oil Gravity Corr. API	Gas Gravity	Production Method
03/24/2018	04/12/2018	24	→	695.0	1022.0	2966.0	44.0	0.79	FLows FROM WELL
Choke Size	Tbg. Press. Flwg.	Csg. Press.	24 Hr. Rate	Oil BBL	Gas MCF	Water BBL	Gas:Oil Ratio	Well Status	
42/64	SI	700.0	→	695	1022	2966	1470	POW	

## 28a. Production - Interval B

Date First Produced	Test Date	Hours Tested	Test Production	Oil BBL	Gas MCF	Water BBL	Oil Gravity Corr. API	Gas Gravity	Production Method
			→						
Choke Size	Tbg. Press. Flwg.	Csg. Press.	24 Hr. Rate	Oil BBL	Gas MCF	Water BBL	Gas:Oil Ratio	Well Status	
	SI		→						

(See Instructions and spaces for additional data on reverse side)

ELECTRONIC SUBMISSION #412121 VERIFIED BY THE BLM WELL INFORMATION SYSTEM

\*\* BLM REVISED \*\* BLM REVISED \*\* BLM REVISED \*\* BLM REVISED \*\* BLM REVISED

ACCEPTED FOR RECORD  
JUL 31 2018  
BUREAU OF LAND MANAGEMENT  
CARLSBAD FIELD OFFICE

Reclamation Due: 9/24/18

28b. Production - Interval C									
Date First Produced	Test Date	Hours Tested	Test Production →	Oil BBL	Gas MCF	Water BBL	Oil Gravity Corr. API	Gas Gravity	Production Method
Choke Size	Tbg. Press. Flwg. SI	Csg. Press.	24 Hr. Rate →	Oil BBL	Gas MCF	Water BBL	Gas:Oil Ratio	Well Status	

28c. Production - Interval D									
Date First Produced	Test Date	Hours Tested	Test Production →	Oil BBL	Gas MCF	Water BBL	Oil Gravity Corr. API	Gas Gravity	Production Method
Choke Size	Tbg. Press. Flwg. SI	Csg. Press.	24 Hr. Rate →	Oil BBL	Gas MCF	Water BBL	Gas:Oil Ratio	Well Status	

29. Disposition of Gas(Sold, used for fuel, vented, etc.)  
SOLD

30. Summary of Porous Zones (Include Aquifers):

Show all important zones of porosity and contents thereof: Cored intervals and all drill-stem tests, including depth interval tested, cushion used, time tool open, flowing and shut-in pressures and recoveries.

31. Formation (Log) Markers

Formation	Top	Bottom	Descriptions, Contents, etc.	Name	Top
					Meas. Depth
BONE SPRING	7670	19580	OIL, & GAS	SALADO	460
				CASTILE	2290
				RAMSEY	3560
				DELAWARE	3785
				BELL CANYON	3840
				MANZANITA	4880
				BRUSHY CANYON	6000
				BONE SPRING	7670

32. Additional remarks (include plugging procedure):  
Exempt from logging.

33. Circle enclosed attachments:

- |   |                    |               |                       |
|---|--------------------|---------------|-----------------------|
| 1. Electrical/Mechanical Logs (1 full set req'd.)     | 2. Geologic Report | 3. DST Report | 4. Directional Survey |
| 5. Sundry Notice for plugging and cement verification | 6. Core Analysis   | 7. Other:     |                       |

34. I hereby certify that the foregoing and attached information is complete and correct as determined from all available records (see attached instructions):

Electronic Submission #412121 Verified by the BLM Well Information System.  
For MEWBOURNE OIL COMPANY, sent to the Carlsbad  
Committed to AFMSS for processing by DUNCAN WHITLOCK on 04/23/2018 (18DW0138SE)

Name (please print) JACKIE LATHAN

Title AUTHORIZED REPRESENTATIVE

Signature (Electronic Submission)

Date 04/18/2018

Title 18 U.S.C. Section 1001 and Title 43 U.S.C. Section 1212, make it a crime for any person knowingly and willfully to make to any department or agency of the United States any false, fictitious or fraudulent statements or representations as to any matter within its jurisdiction.

**\*\* REVISED \*\* REVISED \*\* REVISED \*\* REVISED \*\* REVISED \*\* REVISED \*\* REVISED \*\***

RECEIVED

District I  
1625 N. French Dr., Hobbs, NM 88240  
Phone: (575) 393-6161 Fax: (575) 393-0720  
District II  
811 S. First St., Artesia, NM 88210  
Phone: (575) 748-1283 Fax: (575) 748-9720  
District III  
1000 Rio Drazos Road, Aztec, NM 87410  
Phone: (505) 334-6178 Fax: (505) 334-6170  
District IV  
1220 S. St. Francis Dr., Santa Fe, NM 87505  
Phone: (505) 476-3460 Fax: (505) 476-3462

State of New Mexico  
Energy, Minerals & Natural Resources  
OIL CONSERVATION DIVISION  
1220 South St. Francis Dr.  
Santa Fe, NM 87505

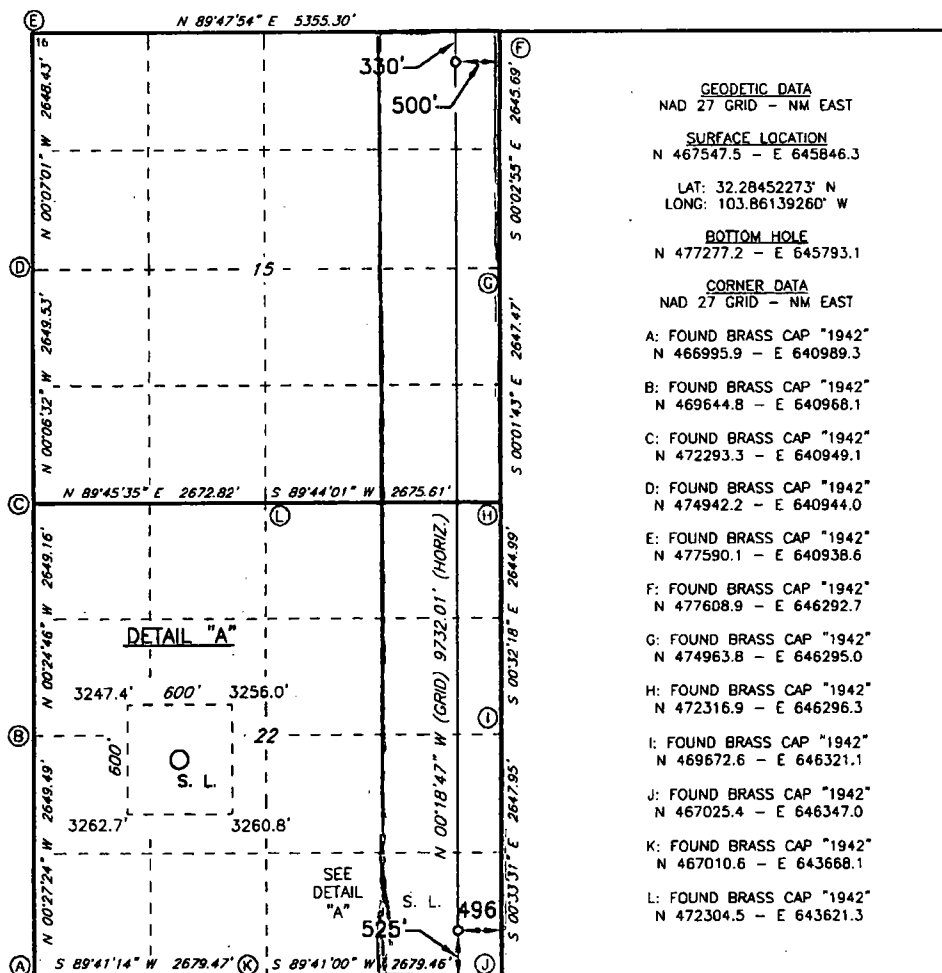
Form C-102  
Revised August 1, 2011  
Submit one copy to appropriate  
District Office

☐ AMENDED REPORT

## WELL LOCATION AND ACREAGE DEDICATION PLAT

1 API Number <b>30-015-44204</b>		2 Pool Code <b>24720</b>		3 Pool Name <b>Forty Niner Ridge; Bone Spring</b>	
4 Property Code <b>35090</b>		5 Property Name <b>FORTY NINER RIDGE UNIT</b>			
7 GRID NO. <b>14744</b>		8 Operator Name <b>MEWBOURNE OIL COMPANY</b>			
		6 Well Number <b>106H</b>		9 Elevation <b>3260'</b>	
10 Surface Location					
UL or lot no. <b>P</b>	Section <b>22</b>	Township <b>23S</b>	Range <b>30E</b>	Lot Idn	Feet from the <b>525</b>
				North/South line <b>SOUTH</b>	Feet from the <b>496</b>
				East/West line <b>EAST</b>	County <b>EDDY</b>
11 Bottom Hole Location If Different From Surface					
UL or lot no. <b>A</b>	Section <b>15</b>	Township <b>23S</b>	Range <b>30E</b>	Lot Idn	Feet from the <b>109</b>
				North/South line <b>NORTH</b>	Feet from the <b>1130</b>
				East/West line <b>EAST</b>	County <b>EDDY</b>
12 Dedicated Acres <b>320</b>		13 Joint or Infill		14 Consolidation Code	
				15 Order No.	

No allowable will be assigned to this completion until all interest have been consolidated or a non-standard unit has been approved by the division.



## 17 OPERATOR CERTIFICATION

I hereby certify that the information contained herein is true and complete to the best of my knowledge and belief, and that this organization either owns a working interest or unleased mineral interest in the land including the proposed bottom hole location or has a right to drill this well at this location pursuant to a contract with an owner of such a mineral or working interest, or to a voluntary pooling agreement or a compulsory pooling order heretofore entered by the division

Signature: *[Signature]* Date: **4/16/18**

Printed Name: *[Signature]*

E-mail Address: \_\_\_\_\_

## 18 SURVEYOR CERTIFICATION

I hereby certify that the well location shown on this plat was plotted from field notes of actual surveys made by me or under my supervision, and that the same is true and correct to the best of my belief.

**7-24-2015**

Date of Survey

Signature and Seal of Professional Surveyor

**19680**

Certificate Number

