

DISTRICT I  
1625 N. FRENCH DR., HOBBES, NM 88240  
Phone: (575) 393-0101 Fax: (575) 393-0720

DISTRICT II  
811 S. FIRST ST., ARTESIA, NM 88210  
Phone: (505) 748-1253 Fax: (505) 748-0720

DISTRICT III  
1000 RIO BRAZOS RD., AZTEC, NM 87410  
Phone: (505) 334-6178 Fax: (505) 334-6170

DISTRICT IV  
1220 S. ST. FRANCIS DR., SANTA FE, NM 87505  
Phone: (505) 476-3460 Fax: (505) 476-3462

State of New Mexico  
Energy, Minerals & Natural Resources Department  
**OIL CONSERVATION DIVISION**  
1220 SOUTH ST. FRANCIS DR.  
Santa Fe, New Mexico 87505

Form C-102  
Revised August 1, 2011  
Submit one copy to appropriate  
District Office

☒ AMENDED REPORT  
(As-Drilled)

WELL LOCATION AND ACREAGE DEDICATION PLAT

API Number <b>30-015-44176</b>	Pool Code <b>96473</b>	Pool Name <b>Pierce Crossing Bone Spring, East</b>
Property Code <b>317654</b>	Property Name <b>CEDAR CANYON 21-22 FEDERAL COM</b>	Well Number <b>32H</b>
GRID No. <b>16696</b>	Operator Name <b>OXY USA INC.</b>	Elevation <b>2931.4'</b>

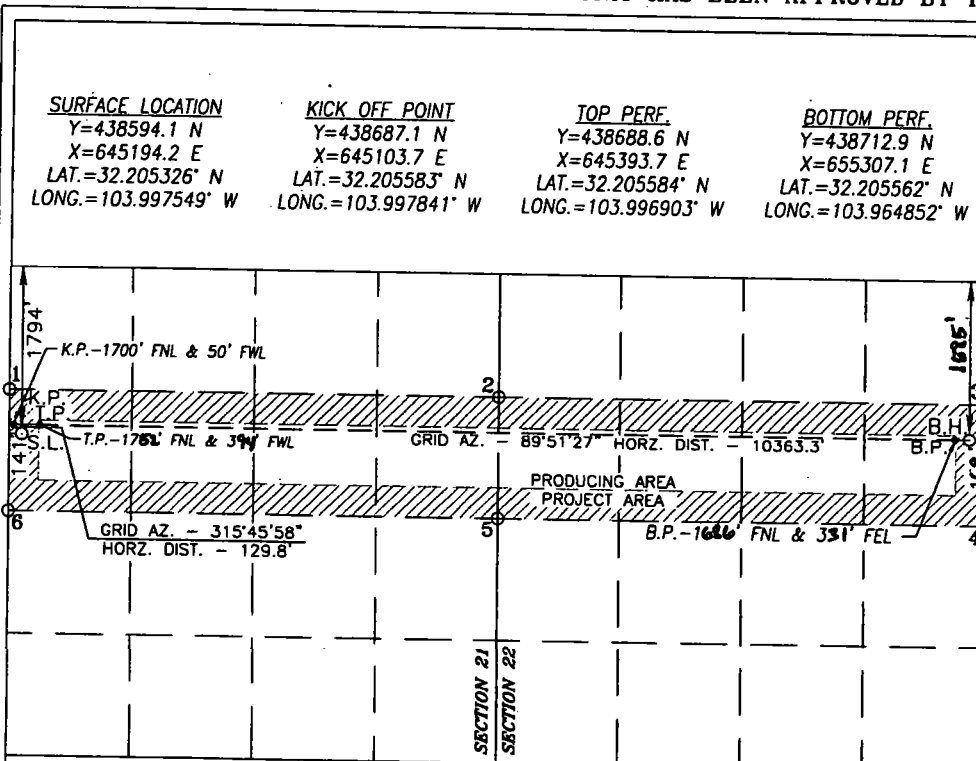
Surface Location

UL or lot No.	Section	Township	Range	Lot Idn	Feet from the	North/South line	Feet from the	East/West line	County
E	21	24-S	29-E		1794	NORTH	141	WEST	EDDY

Bottom Hole Location If Different From Surface

UL or lot No.	Section	Township	Range	Lot Idn	Feet from the	North/South line	Feet from the	East/West line	County
H	22	24-S	29-E		<del>1794</del> <b>1685</b>	NORTH	<del>141</del> <b>162</b>	EAST	EDDY
Dedicated Acres <b>320</b>	Joint or Infill <b>Y</b>	Consolidation Code	Order No. <b>BP- 1686 FNL 331 FEL</b> <b>TP- 1752 FNL 394 FWL</b>						

NO ALLOWABLE WILL BE ASSIGNED TO THIS COMPLETION UNTIL ALL INTERESTS HAVE BEEN CONSOLIDATED  
OR A NON-STANDARD UNIT HAS BEEN APPROVED BY THE DIVISION



POINT LEGEND			
1	Y=439080.4 N X=645055.4 E	4	Y=437758.8 N X=855649.8 E
2	Y=439088.4 N X=650350.8 E	5	Y=437761.8 N X=850353.2 E
3	Y=439085.7 N X=655648.1 E	6	Y=437733.9 N X=845049.4 E

**PROPOSED BOTTOM  
HOLE LOCATION**  
Y=438712.8 N  
X=655467.1 E  
LAT.=32.205560° N  
LONG.=103.964335° W

\* ALL COORDINATES ARE NAD 83 NME VALUES

OPERATOR CERTIFICATION

I hereby certify that the information herein is true and complete to the best of my knowledge and belief, and that this organization either owns a working interest or unleased mineral interest in the land including the proposed bottom hole location or has a right to drill this well at this location pursuant to a contract with an owner of such mineral or working interest, or to a voluntary pooling agreement or a compulsory pooling order heretofore entered by the division.

**Signature** *[Signature]* **Date** **2/1/18**  
**Printed Name** **Jana Mendiola**  
**E-mail Address** **jana.mendiola@oxy.com**

SURVEYOR CERTIFICATION

I hereby certify that the well location shown on this plat was plotted from field notes of actual surveys made by me or under my supervision, and that the same is true and correct to the best of my belief.

**JULY 27, 2016**

**Date of Survey**

**Signature & Seal of Professional Surveyor**



**Chad L. Hargrow** **10/13/16**  
**Certificate No.** **CHAD HARGROW 17777**  
**W.O. #16-804** **DRAWN BY: AM**