

District I  
1625 N. French Dr., Hobbs, NM 88240  
Phone: (575) 393-6161 Fax: (575) 393-0720  
District II  
811 S. First St., Artesia, NM 88210  
Phone: (575) 748-1283 Fax: (575) 748-9720  
District III  
1000 Rio Grande Road, Aztec, NM 87410  
Phone: (505) 334-6178 Fax: (505) 334-6170  
District IV  
1220 S. St. Francis Dr., Santa Fe, NM 87503  
Phone: (505) 476-3450 Fax: (505) 476-3452

**NM OIL CONSERVATION  
ARTESIA DISTRICT**

State of New Mexico  
Energy, Minerals & Natural Resources Department  
**OIL CONSERVATION DIVISION**  
1220 South St. Francis Dr.  
Santa Fe, NM 87505

Form C-102  
SEP 14 2018 Revised August 1, 2011  
Submit one copy to appropriate  
District Office

**RECEIVED**

☒ AMENDED REPORT  
(As-Drilled)

**WELL LOCATION AND ACREAGE DEDICATION PLAT**

API Number <b>30-015-44520</b>	Pool Code <b>50371</b>	Pool Name <b>Pierce Crossing Bone Spring</b>
Property Code <b>319809</b>	Property Name <b>CEDAR CANYON "20" FEDERAL COM</b>	
OGRID No. <b>16696</b>	Operator Name <b>OXY USA INC.</b>	
		Well Number <b>26H</b>
		Elevation <b>2953.9'</b>

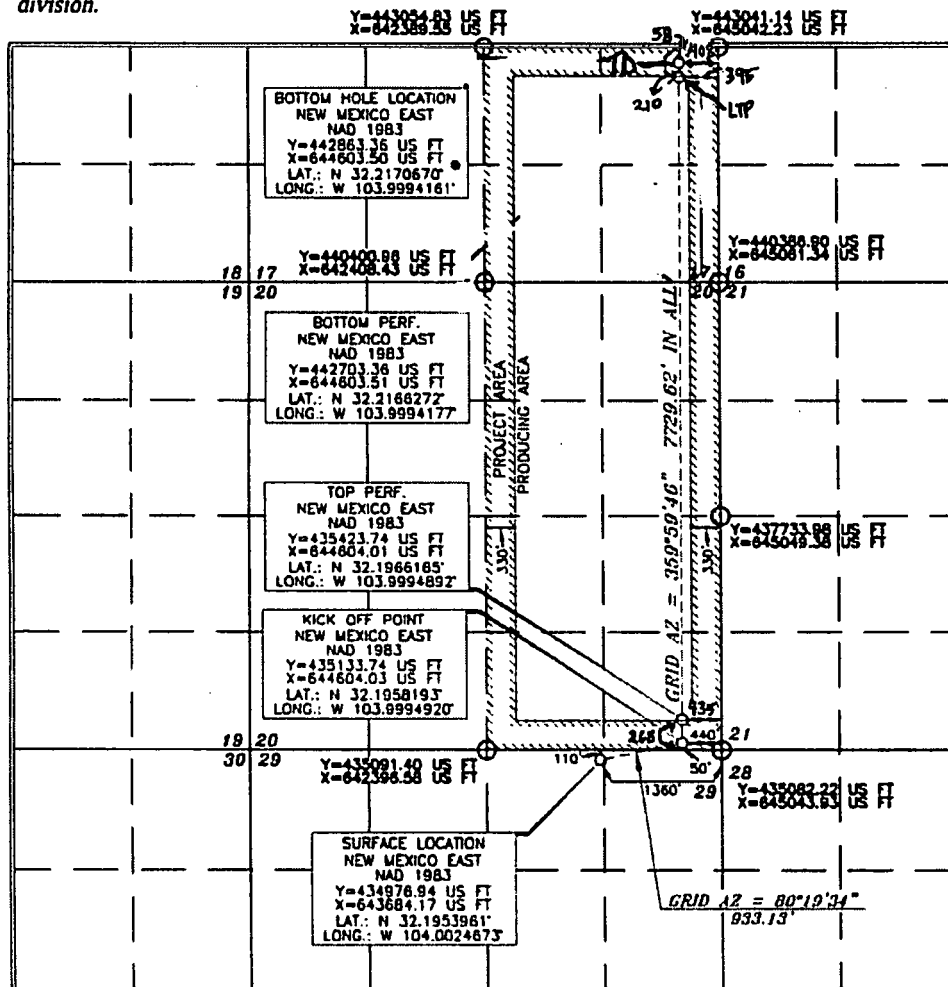
**Surface Location**

UL or lot no.	Section	Township	Range	Lot Ida	Feet from the	North/South line	Feet from the	East/West line	County
<b>B</b>	<b>29</b>	<b>24 SOUTH</b>	<b>29 EAST, N.M.P.M.</b>		<b>110'</b>	<b>NORTH</b>	<b>1360'</b>	<b>EAST</b>	<b>EDDY</b>

**Bottom Hole Location If Different From Surface**

UL or lot no.	Section	Township	Range	Lot Ida	Feet from the	North/South line	Feet from the	East/West line	County
<b>I</b>	<b>17</b>	<b>24 SOUTH</b>	<b>29 EAST, N.M.P.M.</b>		<b>210'</b>	<b>NORTH</b>	<b>1360'</b>	<b>EAST</b>	<b>EDDY</b>
Dedicated Acres <b>480</b>	Joint or Infill <b>Y</b>	Consolidation Code	Order No.	<b>LTP- 210 FNL 395 FEL     * NSPA R-14726</b> <b>FTP- 269 FSL 435 FEL</b>					

No allowable will be assigned to this completion until all interests have been consolidated or a non-standard unit has been approved by the division.



**OPERATOR CERTIFICATION**

I hereby certify that the information contained herein is true and complete to the best of my knowledge and belief, and that the organization either owns a working interest or undivided mineral interest in the land including the proposed bottom hole location or has a right to drill the well at this location pursuant to a contract with an owner of such a mineral or working interest, or to a voluntary pooling agreement or a compulsory pooling order heretofore entered by the division.

*[Signature]* 9/11/18  
Signature \_\_\_\_\_  
Name **Jana Mendiola**  
Printed Name \_\_\_\_\_  
Email Address **jana.mendiola@oxy.com**

**SURVEYOR CERTIFICATION**

I hereby certify that the well location shown on this plat was plotted from the original survey made by me or under my supervision, and that the same is true and correct to the best of my belief.

**15079**  
Date of Survey **FEBRUARY 14, 2018**  
Signature and Seal of Professional Surveyor  
*[Signature]*

**15079**  
Certificate Number **15079**