

RECEIVED

Form 3160-4  
(August 2007)UNITED STATES  
DEPARTMENT OF THE INTERIOR  
BUREAU OF LAND MANAGEMENT

SEP 06 2018 Artesia

FORM APPROVED  
OMB No. 1004-0137  
Expires: July 31, 2010WELL COMPLETION OR RECOMPLETION REPORT AND LOG  
DISTRICT II-ARTESIA O.C.D.5. Lease Serial No.  
NMNM89172

Lease Connection

6. If Indian, Allottee or Tribe Name

7. Unit or CA Agreement Name and No.

8. Lease Name and Well No.  
PATTON MDP1 17 FEDERAL 4H9. API Well No.  
30-015-44497-00-S110. Field and Pool, or Exploratory  
COTTON DRAW-BONE SPRING11. Sec., T., R., M., or Block and Survey  
or Area Sec 8 T24S R31E Mer NMP12. County or Parish  
EDDY13. State  
NM17. Elevations (DF, KB, RT, GL)\*  
3541 GL1a. Type of Well ☒ Oil Well ☐ Gas Well ☐ Dry ☐ Otherb. Type of Completion ☒ New Well ☐ Work Over ☐ Deepen ☐ Plug Back ☐ Diff. Resvr.  
Other2. Name of Operator  
OXY USA INCORPORATED

Contact: JANA MENDIOLA

E-Mail: janalyn\_mendiola@oxy.com

3. Address 5 GREENWAY PLAZA SUITE 110  
HOUSTON, TX 77046-05213a. Phone No. (include area code)  
Ph: 432-685-5936

4. Location of Well (Report location clearly and in accordance with Federal requirements)\*

Sec 8 T24S R31E Mer NMP

At surface SESW 432FSL 2292FWL 32.225780 N Lat, 103.800977 W Lon

Sec 17 T24S R31E Mer NMP

At top prod interval reported below NWNE 358FNL 2164FEL 32.223660 N Lat, 103.798434 W Lon

Sec 17 T24S R31E Mer NMP

At total depth SWSE 219FSL 2158FEL 32.210598 N Lat, 103.798440 W Lon

14. Date Spudded  
11/24/201715. Date T.D. Reached  
01/13/201816. Date Completed  
☐ D & A ☒ Ready to Prod.  
04/02/201818. Total Depth: MD 15379  
TVD 1006319. Plug Back T.D.: MD 15323  
TVD 1006420. Depth Bridge Plug Set: MD  
TVD21. Type Electric & Other Mechanical Logs Run (Submit copy of each)  
MUDLOG22. Was well cored? ☒ No ☐ Yes (Submit analysis)  
Was DST run? ☒ No ☐ Yes (Submit analysis)  
Directional Survey? ☐ No ☒ Yes (Submit analysis)

## 23. Casing and Liner Record (Report all strings set in well)

Hole Size	Size/Grade	Wt. (#/ft.)	Top (MD)	Bottom (MD)	Stage Cementer Depth	No. of Sk. & Type of Cement	Slurry Vol. (BBL)	Cement Top*	Amount Pulled
17.500	13.375 J55	54.5	0	704		915	220	0	
12.250	9.625 J55	47.0	0	4444		1235	398	0	
8.500	5.500 P110	20.0	0	15379		2175	675	1755	

## 24. Tubing Record

Size	Depth Set (MD)	Packer Depth (MD)	Size	Depth Set (MD)	Packer Depth (MD)	Size	Depth Set (MD)	Packer Depth (MD)
2.875	9785	9785						

## 25. Producing Intervals

## 26. Perforation Record

Formation	Top	Bottom	Perforated Interval	Size	No. Holes	Perf. Status
A) BONE SPRING 2ND	10674	15244	10674 TO 15244	0.370	543	ACTIVE
B)						
C)						
D)						

## 27. Acid, Fracture, Treatment, Cement Squeeze, Etc.

Depth Interval	Amount and Type of Material
10674 TO 15244	7608762G SLICK WATER + 23982G 7.5% HCL ACID W/ 9450320# SAND

## 28. Production - Interval A

Date First Produced	Test Date	Hours Tested	Test Production	Oil BBL	Gas MCF	Water BBL	Oil Gravity Corr. API	Gas Gravity	Production Method
04/04/2018	04/22/2018	24	→	1478.0	2050.0	2298.0			GAS LIFT
Choke Size	Tbg. Press. Flwg.	Csg. Press.	24 Hr. Rate	Oil BBL	Gas MCF	Water BBL	Gas:Oil Ratio	Well Status	
72/128	SI	708.0	→	1478	2050	2298	1387	POW	

## 28a. Production - Interval B

Date First Produced	Test Date	Hours Tested	Test Production	Oil BBL	Gas MCF	Water BBL	Oil Gravity Corr. API	Gas Gravity	Production Method
			→						
Choke Size	Tbg. Press. Flwg.	Csg. Press.	24 Hr. Rate	Oil BBL	Gas MCF	Water BBL	Gas:Oil Ratio	Well Status	
			→						

ACCEPTED FOR RECORD

AUG 25 2018

BUREAU OF LAND MANAGEMENT  
CARLSBAD FIELD OFFICE

(See Instructions and spaces for additional data on reverse side)

ELECTRONIC SUBMISSION #426157 VERIFIED BY THE BLM WELL INFORMATION SYSTEM

\*\* BLM REVISED \*\* BLM REVISED \*\* BLM REVISED \*\* BLM REVISED \*\* BLM REVISED \*\*

Reclamation Due: 10/2/2018

## 28b. Production - Interval C

Date First Produced	Test Date	Hours Tested	Test Production	Oil BBL	Gas MCF	Water BBL	Oil Gravity Corr. API	Gas Gravity	Production Method
			→						
Choke Size	Tbg. Press. Flwg. SI	Csg. Press.	24 Hr. Rate	Oil BBL	Gas MCF	Water BBL	Gas:Oil Ratio	Well Status	
			→						

## 28c. Production - Interval D

Date First Produced	Test Date	Hours Tested	Test Production	Oil BBL	Gas MCF	Water BBL	Oil Gravity Corr. API	Gas Gravity	Production Method
			→						
Choke Size	Tbg. Press. Flwg. SI	Csg. Press.	24 Hr. Rate	Oil BBL	Gas MCF	Water BBL	Gas:Oil Ratio	Well Status	
			→						

29. Disposition of Gas(Sold, used for fuel, vented, etc.)  
SOLD

## 30. Summary of Porous Zones (Include Aquifers):

Show all important zones of porosity and contents thereof: Cored intervals and all drill-stem tests, including depth interval tested, cushion used, time tool open, flowing and shut-in pressures and recoveries.

## 31. Formation (Log) Markers

Formation	Top	Bottom	Descriptions, Contents, etc.	Name	Top
					Meas. Depth
BELL CANYON	4380	5296	OIL, GAS, WATER	RUSTLER	611
CHERRY CANYON	5297	6494	OIL, GAS, WATER	SALADO	1005
BRUSHY CANYON	6495	8265	OIL, GAS, WATER	CASTILE	2804
BONE SPRING	8266	9243	OIL, GAS, WATER	DELAWARE	4353
BONE SPRING 1ST	9244	9887	OIL, GAS, WATER	BELL CANYON	4380
BONE SPRING 2ND	9888	10064	OIL, GAS, WATER	CHERRY CANYON	5297
				BRUSHY CANYON	6495
				BONE SPRING	8266

## 32. Additional remarks (include plugging procedure):

## 52. FORMATION (LOG) MARKERS CONTD.

1ST BONE SPRINGS 9244'M  
2ND BONE SPRINGS 9888'M

Logs were mailed 7/3/18.

## 33. Circle enclosed attachments:

- |   |                    |               |                       |
|---|--------------------|---------------|-----------------------|
| 1. Electrical/Mechanical Logs (1 full set req'd.)     | 2. Geologic Report | 3. DST Report | 4. Directional Survey |
| 5. Sundry Notice for plugging and cement verification | 6. Core Analysis   | 7 Other:      |                       |

## 34. I hereby certify that the foregoing and attached information is complete and correct as determined from all available records (see attached instructions):

Electronic Submission #426157 Verified by the BLM Well Information System.

For OXY USA INCORPORATED, sent to the Carlsbad

Committed to AFMSS for processing by DUNCAN WHITLOCK on 07/10/2018 (18DW0197SE)

Name (please print) DAVID STEWART

Title REGULATORY ADVISOR

Signature \_\_\_\_\_ (Electronic Submission)

Date 07/02/2018

Title 18 U.S.C. Section 1001 and Title 43 U.S.C. Section 1212, make it a crime for any person knowingly and willfully to make to any department or agency of the United States any false, fictitious or fraudulent statements or representations as to any matter within its jurisdiction.

**\*\* REVISED \*\* REVISED \*\* REVISED \*\* REVISED \*\* REVISED \*\* REVISED \*\* REVISED \*\* REVISED \*\***

**Additional data for transaction #426157 that would not fit on the form**

**32. Additional remarks, continued**

Log Header, Directional Survey, As-Drilled Amended C-102 plat & WBD are attached.

Division I  
1621 N. Francis Dr., Hobbs, NM 88240  
Phone: (575) 393-6161 Fax: (575) 393-0720  
Division II  
111 S. First St., Artesia, NM 88210  
Phone: (575) 744-1281 Fax: (575) 744-9720  
Division III  
1010 Rio Arriba Road, Aztec, NM 87410  
Phone: (505) 334-6173 Fax: (505) 334-6170  
Division IV  
1220 S. St. Francis Dr., Santa Fe, NM 87505  
Phone: (505) 476-3450 Fax: (505) 476-3452

State of New Mexico  
Energy, Minerals & Natural Resources Department  
OIL CONSERVATION DIVISION  
1220 South St. Francis Dr.  
Santa Fe, NM 87505

NM OIL CONSERVATION  
DISTRICT  
SEP 6 2018  
RECEIVED

Form C-102  
Revised August 1, 2011  
Submit one copy to appropriate  
District Office

☒ AMENDED REPORT  
As Drilled

WELL LOCATION AND ACREAGE DEDICATION PLAT

API Number 30-015-44497	Pool Code 13367	Pool Name COTTON DRAW, BONE SPRING
Property Code 319619	Property Name PATTON MDP1 "17" FEDERAL	Well Number 4H
OGRID No. 16696	Operator Name OXY USA INC.	Elevation 3540.7'

Surface Location

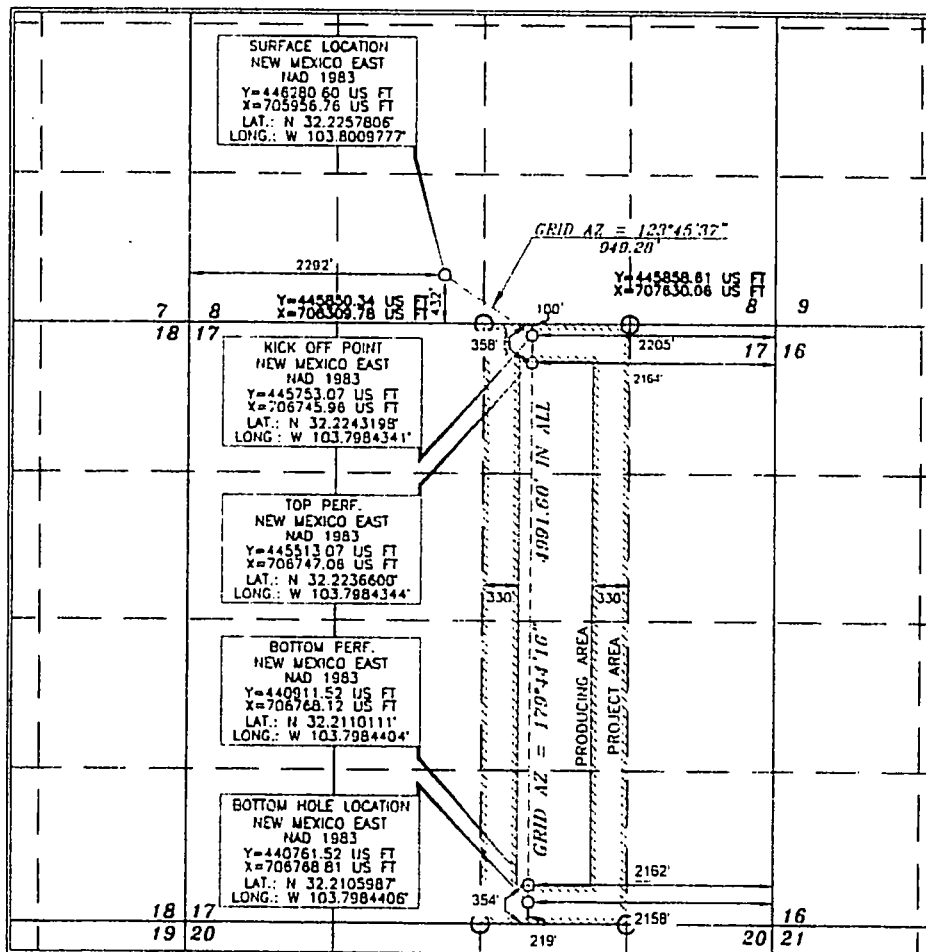
UL or Int no.	Section	Township	Range	Lot Idn	Feet from the	North/South line	Feet from the	East West line	County
N	8	24 SOUTH	31 EAST, N.M.P.M.		432'	SOUTH	2292'	WEST	EDDY

Bottom Hole Location If Different From Surface

UL or Int no.	Section	Township	Range	Lot Idn	Feet from the	North/South line	Feet from the	East West line	County
0	17	24 SOUTH	31 EAST, N.M.P.M.		219'	SOUTH	2158'	EAST	EDDY

Dedicated Acres 160	Joint or Infill Y	Consolidation Code	Order No. TP: 358 FNL 2164 FEL BP: 354 FSL 2162 FEL
------------------------	----------------------	--------------------	--

No allowable will be assigned to this completion until all interests have been consolidated or a non-standard unit has been approved by the division.



OPERATOR CERTIFICATION

I hereby certify that the information contained herein is true and correct to the best of my knowledge and belief, and that this information was obtained from a working interest or released interest in the land included in the proposed location hole location or has a right to drill this well at this location pursuant to a contract with an owner of such a mineral or working interest, or as a voluntary pooling agreement or a compulsory pooling order heretofore entered by the division.

Signature: Sarah Mitchell Date: 3/28/18  
Printed Name: Sarah Mitchell  
Email Address: sarah\_mitchell@oxy.com

SURVEYOR CERTIFICATION

I hereby certify that the survey information on this plat was obtained from a working interest or released interest in the land included in the proposed location hole location or has a right to drill this well at this location pursuant to a contract with an owner of such a mineral or working interest, or as a voluntary pooling agreement or a compulsory pooling order heretofore entered by the division.

Date of Survey: OCTOBER 2, 2016  
Signature and Seal: Terry J. Asberry  
Professional Surveyor

Signature: Terry J. Asberry Date: 10/2/2016  
Certificate Number: 15079

WO# 161007WL-C-XY (KA)

Y=440568.91 US FT X=706333.13 US FT  
Y=440526.87 US FT X=707858.86 US FT

OXY USA Inc.  
Patton MDP1 17 Federal 4H  
API No. 30-015-44497

17-1/2" hole @ 704'  
13-3/8" csg @ 704'  
w/ 915sx-TOC-Surf Circ.

12-1/4" hole @ 4454'  
9-5/8" csg @ 4444'  
w/ 1235sx-TOC-Surf Circ.

8-1/2" hole @ 15379'  
5-1/2" csg @ 15379'  
w/ 2175sx-TOC-1755' EM

2-7/8" tbg & pkr @ 9785'

Perfs @ 10674-15244'

TD- 15379'M 10063'V