

District I  
1625 N. French Dr., Hobbs, NM 88240  
Phone: (575) 393-6161 Fax: (575) 393-0720  
District II  
811 S. First St., Artesia, NM 88210  
Phone: (575) 748-1283 Fax: (575) 748-9720  
District III  
1000 Rio Brazos Road, Aztec, NM 87410  
Phone: (505) 334-6178 Fax: (505) 334-6170  
District IV  
1220 S. St. Francis Dr., Santa Fe, NM 87505  
Phone: (505) 476-3460 Fax: (505) 476-3462

State of New Mexico  
Energy, Minerals & Natural Resources Department  
OIL CONSERVATION DIVISION  
1220 South St. Francis Dr.  
Santa Fe, NM 87505

Form C-102  
Revised August 1, 2011  
Submit one copy to appropriate Office  
**NM OIL CONSERVATION**  
**ARTESIA DISTRICT**  
 AMENDED REPORT  
**SEP 28 2018**

WELL LOCATION AND ACREAGE DEDICATION PLAT

<sup>1</sup> API Number <b>30-015-45276</b>	<sup>2</sup> Pool Code 39350	<sup>3</sup> Pool Name Livingston Ridge/Bone Spring
<sup>4</sup> Property Code <b>322487</b>	<sup>5</sup> Property Name BELLOQ 11-2 FED STATE COM	
<sup>7</sup> OGRID No. 6137	<sup>8</sup> Operator Name DEVON ENERGY PRODUCTION COMPANY, L.P.	<sup>6</sup> Well Number 223H
		<sup>9</sup> Elevation 3487.1

<sup>10</sup> Surface Location

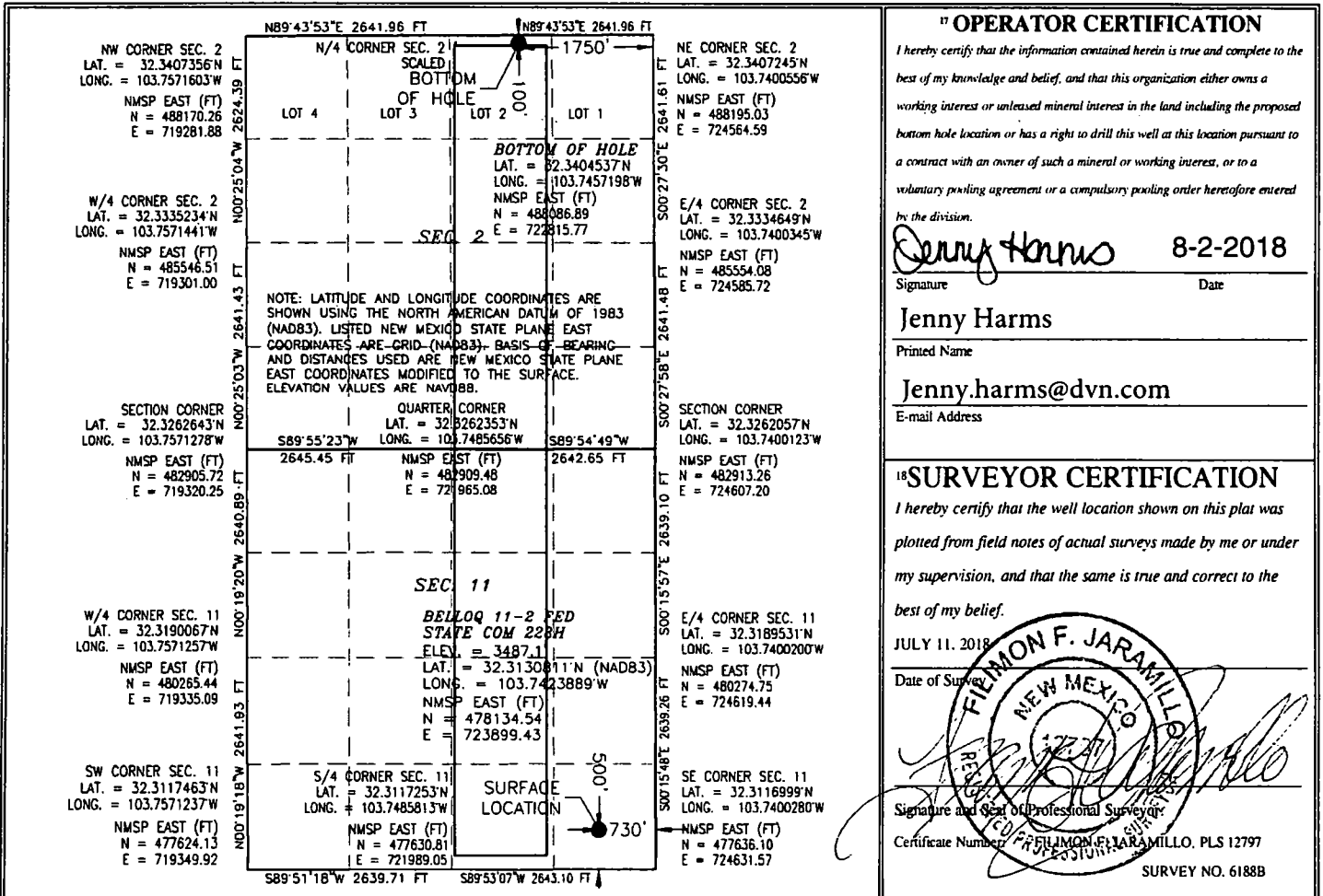
UL or lot no.	Section	Township	Range	Lot Idn	Feet from the	North/South line	Feet from the	East/West line	County
P	11	23 S	31 E		500	SOUTH	730	EAST	EDDY

<sup>11</sup> Bottom Hole Location If Different From Surface

UL or lot no.	Section	Township	Range	Lot Idn	Feet from the	North/South line	Feet from the	East/West line	County
B2	2	23 S	31 E		100	NORTH	1750	EAST	EDDY

<sup>12</sup> Dedicated Acres 319.78	<sup>13</sup> Joint or Infill	<sup>14</sup> Consolidation Code	<sup>15</sup> Order No.
---	-------------------------------	----------------------------------	-------------------------

No allowable will be assigned to this completion until all interests have been consolidated or a non-standard unit has been approved by the division.



KOP: 50 FSL, 1750 FEL 11-23S-31E LAT: 32.31186, LONG: -103.745699  
1st take point: 100 FSL, 1750 FEL, 11-23S-31E, LAT: 32.311997, LONG: -103.745699  
Last take point: 100 FNL, 1750 FEL, 2-23S-31E, LAT: 32.340454, LONG: -103.74572

*PL 9-29-18*