

District I  
1625 N. French Dr., Hobbs, NM 88240  
Phone: (575) 393-6161 Fax: (575) 393-0720  
District II  
811 S. First St., Artesia, NM 88210  
Phone: (575) 748-1283 Fax: (575) 748-9720  
District III  
1000 Rio Brazos Road, Aztec, NM 87410  
Phone: (505) 334-6178 Fax: (505) 334-6170  
District IV  
1220 S. St. Francis Dr., Santa Fe, NM 87505  
Phone: (505) 476-3460 Fax: (505) 476-3462

State of New Mexico  
Energy, Minerals & Natural Resources Department  
**OIL CONSERVATION DIVISION**  
1220 South St. Francis Dr.  
Santa Fe, NM 87505

Form C-102  
Revised August 1, 2011  
Submit one copy to appropriate  
District Office

NOV 05 2018

☐ AMENDED REPORT

**RECEIVED**  
**WELL LOCATION AND ACREAGE DEDICATION PLAT**

<sup>1</sup> API Number 30-015-45367		<sup>2</sup> Pool Code 97869	<sup>3</sup> Pool Name SWD; Devonian-Silurian
<sup>4</sup> Property Code 322758	<sup>5</sup> Property Name BERRY SWD		<sup>6</sup> Well Number 1
<sup>7</sup> OGRID NO. 373500	<sup>8</sup> Operator Name LILYSTREAM WATER SOLUTIONS LLC		<sup>9</sup> Elevation 2954'

<sup>10</sup> Surface Location									
UL or lot no.	Section	Township	Range	Lot Idn	Feet from the	North/South line	Feet From the	East/West line	County
D	20	24S	29E		690	NORTH	220	WEST	EDDY

<sup>11</sup> Bottom Hole Location If Different From Surface									
UL or lot no.	Section	Township	Range	Lot Idn	Feet from the	North/South line	Feet from the	East/West line	County
<sup>12</sup> Dedicated Acres		<sup>13</sup> Joint or Infill		<sup>14</sup> Consolidation Code		<sup>15</sup> Order No.			

No allowable will be assigned to this completion until all interest have been consolidated or a non-standard unit has been approved by the division.

<p>① S 89°47'41" E 2646.07'</p> <p>② S 89°40'31" E 2653.52'</p> <p>③ N 00°12'22" E 2653.58'</p> <p>④ N 00°12'22" E 2653.58'</p> <p>⑤ N 00°12'22" E 2653.58'</p> <p>⑥ N 00°12'22" E 2653.58'</p> <p>⑦ N 00°12'22" E 2653.58'</p> <p>⑧ N 00°12'22" E 2653.58'</p> <p>⑨ N 00°12'22" E 2653.58'</p> <p>⑩ N 00°12'22" E 2653.58'</p> <p>⑪ N 00°12'22" E 2653.58'</p> <p>⑫ N 00°12'22" E 2653.58'</p> <p>⑬ N 00°12'22" E 2653.58'</p> <p>⑭ N 00°12'22" E 2653.58'</p> <p>⑮ N 00°12'22" E 2653.58'</p> <p>⑯ N 00°12'22" E 2653.58'</p> <p>⑰ N 00°12'22" E 2653.58'</p> <p>⑱ N 00°12'22" E 2653.58'</p> <p>⑲ N 00°12'22" E 2653.58'</p> <p>⑳ N 00°12'22" E 2653.58'</p> <p>㉑ N 00°12'22" E 2653.58'</p> <p>㉒ N 00°12'22" E 2653.58'</p> <p>㉓ N 00°12'22" E 2653.58'</p> <p>㉔ N 00°12'22" E 2653.58'</p> <p>㉕ N 00°12'22" E 2653.58'</p> <p>㉖ N 00°12'22" E 2653.58'</p> <p>㉗ N 00°12'22" E 2653.58'</p> <p>㉘ N 00°12'22" E 2653.58'</p> <p>㉙ N 00°12'22" E 2653.58'</p> <p>㉚ N 00°12'22" E 2653.58'</p> <p>㉛ N 00°12'22" E 2653.58'</p> <p>㉜ N 00°12'22" E 2653.58'</p> <p>㉝ N 00°12'22" E 2653.58'</p> <p>㉞ N 00°12'22" E 2653.58'</p> <p>㉟ N 00°12'22" E 2653.58'</p> <p>㊱ N 00°12'22" E 2653.58'</p> <p>㊲ N 00°12'22" E 2653.58'</p> <p>㊳ N 00°12'22" E 2653.58'</p> <p>㊴ N 00°12'22" E 2653.58'</p> <p>㊵ N 00°12'22" E 2653.58'</p> <p>㊶ N 00°12'22" E 2653.58'</p> <p>㊷ N 00°12'22" E 2653.58'</p> <p>㊸ N 00°12'22" E 2653.58'</p> <p>㊹ N 00°12'22" E 2653.58'</p> <p>㊺ N 00°12'22" E 2653.58'</p> <p>㊻ N 00°12'22" E 2653.58'</p> <p>㊼ N 00°12'22" E 2653.58'</p> <p>㊽ N 00°12'22" E 2653.58'</p> <p>㊾ N 00°12'22" E 2653.58'</p> <p>㊿ N 00°12'22" E 2653.58'</p>		<p>① S 89°47'41" E 2646.07'</p> <p>② S 89°40'31" E 2653.52'</p> <p>③ N 00°12'22" E 2653.58'</p> <p>④ N 00°12'22" E 2653.58'</p> <p>⑤ N 00°12'22" E 2653.58'</p> <p>⑥ N 00°12'22" E 2653.58'</p> <p>⑦ N 00°12'22" E 2653.58'</p> <p>⑧ N 00°12'22" E 2653.58'</p> <p>⑨ N 00°12'22" E 2653.58'</p> <p>⑩ N 00°12'22" E 2653.58'</p> <p>⑪ N 00°12'22" E 2653.58'</p> <p>⑫ N 00°12'22" E 2653.58'</p> <p>⑬ N 00°12'22" E 2653.58'</p> <p>⑭ N 00°12'22" E 2653.58'</p> <p>⑮ N 00°12'22" E 2653.58'</p> <p>⑯ N 00°12'22" E 2653.58'</p> <p>⑰ N 00°12'22" E 2653.58'</p> <p>⑱ N 00°12'22" E 2653.58'</p> <p>⑲ N 00°12'22" E 2653.58'</p> <p>⑳ N 00°12'22" E 2653.58'</p> <p>㉑ N 00°12'22" E 2653.58'</p> <p>㉒ N 00°12'22" E 2653.58'</p> <p>㉓ N 00°12'22" E 2653.58'</p> <p>㉔ N 00°12'22" E 2653.58'</p> <p>㉕ N 00°12'22" E 2653.58'</p> <p>㉖ N 00°12'22" E 2653.58'</p> <p>㉗ N 00°12'22" E 2653.58'</p> <p>㉘ N 00°12'22" E 2653.58'</p> <p>㉙ N 00°12'22" E 2653.58'</p> <p>㉚ N 00°12'22" E 2653.58'</p> <p>㉛ N 00°12'22" E 2653.58'</p> <p>㉜ N 00°12'22" E 2653.58'</p> <p>㉝ N 00°12'22" E 2653.58'</p> <p>㉞ N 00°12'22" E 2653.58'</p> <p>㉟ N 00°12'22" E 2653.58'</p> <p>㊱ N 00°12'22" E 2653.58'</p> <p>㊲ N 00°12'22" E 2653.58'</p> <p>㊳ N 00°12'22" E 2653.58'</p> <p>㊴ N 00°12'22" E 2653.58'</p> <p>㊵ N 00°12'22" E 2653.58'</p> <p>㊶ N 00°12'22" E 2653.58'</p> <p>㊷ N 00°12'22" E 2653.58'</p> <p>㊸ N 00°12'22" E 2653.58'</p> <p>㊹ N 00°12'22" E 2653.58'</p> <p>㊺ N 00°12'22" E 2653.58'</p> <p>㊻ N 00°12'22" E 2653.58'</p> <p>㊼ N 00°12'22" E 2653.58'</p> <p>㊽ N 00°12'22" E 2653.58'</p> <p>㊾ N 00°12'22" E 2653.58'</p> <p>㊿ N 00°12'22" E 2653.58'</p>	<p>① S 89°47'41" E 2646.07'</p> <p>② S 89°40'31" E 2653.52'</p> <p>③ N 00°12'22" E 2653.58'</p> <p>④ N 00°12'22" E 2653.58'</p> <p>⑤ N 00°12'22" E 2653.58'</p> <p>⑥ N 00°12'22" E 2653.58'</p> <p>⑦ N 00°12'22" E 2653.58'</p> <p>⑧ N 00°12'22" E 2653.58'</p> <p>⑨ N 00°12'22" E 2653.58'</p> <p>⑩ N 00°12'22" E 2653.58'</p> <p>⑪ N 00°12'22" E 2653.58'</p> <p>⑫ N 00°12'22" E 2653.58'</p> <p>⑬ N 00°12'22" E 2653.58'</p> <p>⑭ N 00°12'22" E 2653.58'</p> <p>⑮ N 00°12'22" E 2653.58'</p> <p>⑯ N 00°12'22" E 2653.58'</p> <p>⑰ N 00°12'22" E 2653.58'</p> <p>⑱ N 00°12'22" E 2653.58'</p> <p>⑲ N 00°12'22" E 2653.58'</p> <p>⑳ N 00°12'22" E 2653.58'</p> <p>㉑ N 00°12'22" E 2653.58'</p> <p>㉒ N 00°12'22" E 2653.58'</p> <p>㉓ N 00°12'22" E 2653.58'</p> <p>㉔ N 00°12'22" E 2653.58'</p> <p>㉕ N 00°12'22" E 2653.58'</p> <p>㉖ N 00°12'22" E 2653.58'</p> <p>㉗ N 00°12'22" E 2653.58'</p> <p>㉘ N 00°12'22" E 2653.58'</p> <p>㉙ N 00°12'22" E 2653.58'</p> <p>㉚ N 00°12'22" E 2653.58'</p> <p>㉛ N 00°12'22" E 2653.58'</p> <p>㉜ N 00°12'22" E 2653.58'</p> <p>㉝ N 00°12'22" E 2653.58'</p> <p>㉞ N 00°12'22" E 2653.58'</p> <p>㉟ N 00°12'22" E 2653.58'</p> <p>㊱ N 00°12'22" E 2653.58'</p> <p>㊲ N 00°12'22" E 2653.58'</p> <p>㊳ N 00°12'22" E 2653.58'</p> <p>㊴ N 00°12'22" E 2653.58'</p> <p>㊵ N 00°12'22" E 2653.58'</p> <p>㊶ N 00°12'22" E 2653.58'</p> <p>㊷ N 00°12'22" E 2653.58'</p> <p>㊸ N 00°12'22" E 2653.58'</p> <p>㊹ N 00°12'22" E 2653.58'</p> <p>㊺ N 00°12'22" E 2653.58'</p> <p>㊻ N 00°12'22" E 2653.58'</p> <p>㊼ N 00°12'22" E 2653.58'</p> <p>㊽ N 00°12'22" E 2653.58'</p> <p>㊾ N 00°12'22" E 2653.58'</p> <p>㊿ N 00°12'22" E 2653.58'</p>	<p><b>17 OPERATOR CERTIFICATION</b> I hereby certify that the information contained herein is true and complete to the best of my knowledge and belief, and that this organization either owns a working interest or unleased mineral interest in the land including the proposed bottom hole location or has a right to drill this well at this location pursuant to a contract with an owner of such a mineral or working interest, or to a voluntary pooling agreement or a compulsory pooling order heretofore entered by the division.</p> <p>Signature: <i>Ben Stone</i> Date: 11/05/2018 Printed Name: Ben Stone E-mail Address: ben@sosconsulting.us</p>
<p>① S 89°47'41" E 2646.07'</p> <p>② S 89°40'31" E 2653.52'</p> <p>③ N 00°12'22" E 2653.58'</p> <p>④ N 00°12'22" E 2653.58'</p> <p>⑤ N 00°12'22" E 2653.58'</p> <p>⑥ N 00°12'22" E 2653.58'</p> <p>⑦ N 00°12'22" E 2653.58'</p> <p>⑧ N 00°12'22" E 2653.58'</p> <p>⑨ N 00°12'22" E 2653.58'</p> <p>⑩ N 00°12'22" E 2653.58'</p> <p>⑪ N 00°12'22" E 2653.58'</p> <p>⑫ N 00°12'22" E 2653.58'</p> <p>⑬ N 00°12'22" E 2653.58'</p> <p>⑭ N 00°12'22" E 2653.58'</p> <p>⑮ N 00°12'22" E 2653.58'</p> <p>⑯ N 00°12'22" E 2653.58'</p> <p>⑰ N 00°12'22" E 2653.58'</p> <p>⑱ N 00°12'22" E 2653.58'</p> <p>⑲ N 00°12'22" E 2653.58'</p> <p>⑳ N 00°12'22" E 2653.58'</p> <p>㉑ N 00°12'22" E 2653.58'</p> <p>㉒ N 00°12'22" E 2653.58'</p> <p>㉓ N 00°12'22" E 2653.58'</p> <p>㉔ N 00°12'22" E 2653.58'</p> <p>㉕ N 00°12'22" E 2653.58'</p> <p>㉖ N 00°12'22" E 2653.58'</p> <p>㉗ N 00°12'22" E 2653.58'</p> <p>㉘ N 00°12'22" E 2653.58'</p> <p>㉙ N 00°12'22" E 2653.58'</p> <p>㉚ N 00°12'22" E 2653.58'</p> <p>㉛ N 00°12'22" E 2653.58'</p> <p>㉜ N 00°12'22" E 2653.58'</p> <p>㉝ N 00°12'22" E 2653.58'</p> <p>㉞ N 00°12'22" E 2653.58'</p> <p>㉟ N 00°12'22" E 2653.58'</p> <p>㊱ N 00°12'22" E 2653.58'</p> <p>㊲ N 00°12'22" E 2653.58'</p> <p>㊳ N 00°12'22" E 2653.58'</p> <p>㊴ N 00°12'22" E 2653.58'</p> <p>㊵ N 00°12'22" E 2653.58'</p> <p>㊶ N 00°12'22" E 2653.58'</p> <p>㊷ N 00°12'22" E 2653.58'</p> <p>㊸ N 00°12'22" E 2653.58'</p> <p>㊹ N 00°12'22" E 2653.58'</p> <p>㊺ N 00°12'22" E 2653.58'</p> <p>㊻ N 00°12'22" E 2653.58'</p> <p>㊼ N 00°12'22" E 2653.58'</p> <p>㊽ N 00°12'22" E 2653.58'</p> <p>㊾ N 00°12'22" E 2653.58'</p> <p>㊿ N 00°12'22" E 2653.58'</p>		<p>① S 89°47'41" E 2646.07'</p> <p>② S 89°40'31" E 2653.52'</p> <p>③ N 00°12'22" E 2653.58'</p> <p>④ N 00°12'22" E 2653.58'</p> <p>⑤ N 00°12'22" E 2653.58'</p> <p>⑥ N 00°12'22" E 2653.58'</p> <p>⑦ N 00°12'22" E 2653.58'</p> <p>⑧ N 00°12'22" E 2653.58'</p> <p>⑨ N 00°12'22" E 2653.58'</p> <p>⑩ N 00°12'22" E 2653.58'</p> <p>⑪ N 00°12'22" E 2653.58'</p> <p>⑫ N 00°12'22" E 2653.58'</p> <p>⑬ N 00°12'22" E 2653.58'</p> <p>⑭ N 00°12'22" E 2653.58'</p> <p>⑮ N 00°12'22" E 2653.58'</p> <p>⑯ N 00°12'22" E 2653.58'</p> <p>⑰ N 00°12'22" E 2653.58'</p> <p>⑱ N 00°12'22" E 2653.58'</p> <p>⑲ N 00°12'22" E 2653.58'</p> <p>⑳ N 00°12'22" E 2653.58'</p> <p>㉑ N 00°12'22" E 2653.58'</p> <p>㉒ N 00°12'22" E 2653.58'</p> <p>㉓ N 00°12'22" E 2653.58'</p> <p>㉔ N 00°12'22" E 2653.58'</p> <p>㉕ N 00°12'22" E 2653.58'</p> <p>㉖ N 00°12'22" E 2653.58'</p> <p>㉗ N 00°12'22" E 2653.58'</p> <p>㉘ N 00°12'22" E 2653.58'</p> <p>㉙ N 00°12'22" E 2653.58'</p> <p>㉚ N 00°12'22" E 2653.58'</p> <p>㉛ N 00°12'22" E 2653.58'</p> <p>㉜ N 00°12'22" E 2653.58'</p> <p>㉝ N 00°12'22" E 2653.58'</p> <p>㉞ N 00°12'22" E 2653.58'</p> <p>㉟ N 00°12'22" E 2653.58'</p> <p>㊱ N 00°12'22" E 2653.58'</p> <p>㊲ N 00°12'22" E 2653.58'</p> <p>㊳ N 00°12'22" E 2653.58'</p> <p>㊴ N 00°12'22" E 2653.58'</p> <p>㊵ N 00°12'22" E 2653.58'</p> <p>㊶ N 00°12'22" E 2653.58'</p> <p>㊷ N 00°12'22" E 2653.58'</p> <p>㊸ N 00°12'22" E 2653.58'</p> <p>㊹ N 00°12'22" E 2653.58'</p> <p>㊺ N 00°12'22" E 2653.58'</p> <p>㊻ N 00°12'22" E 2653.58'</p> <p>㊼ N 00°12'22" E 2653.58'</p> <p>㊽ N 00°12'22" E 2653.58'</p> <p>㊾ N 00°12'22" E 2653.58'</p> <p>㊿ N 00°12'22" E 2653.58'</p>	<p><b>18 SURVEYOR CERTIFICATION</b> I hereby certify that the well location shown on this plat was plotted from field notes of actual surveys made by me or under my supervision, and that the same is true and correct to the best of my belief.</p> <p>10-05-2018 Date of Survey</p> <p>Signature and Seal of Professional Surveyor: <i>Robert M. Howett</i></p> <p>19680 Certificate Number</p>	

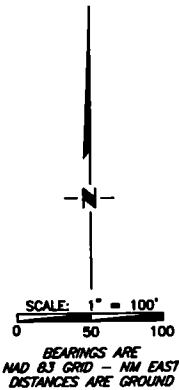
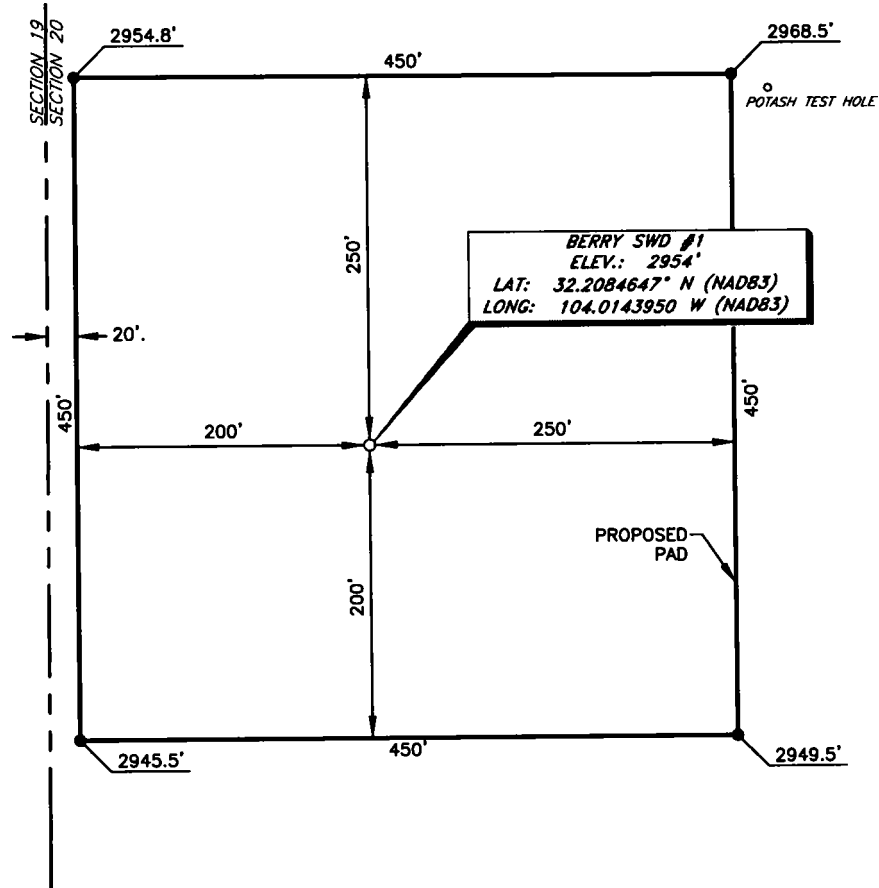
Job No.: LS10101130

LILYSTREAM WATER SOLUTIONS LLC  
 BERRY SWD #1  
 (690' FNL & 220' FWL)  
 SECTION 20, T24S, R29E  
 N. M. P. M., EDDY CO., NEW MEXICO

NM OIL CONSERVATION  
 ARTESIA DISTRICT

NOV 05 2018

RECEIVED



Copyright 2016 - All Rights Reserved

NO.	REVISION	DATE

**RRC**

308 W. BROADWAY ST., HOBBS, NM 88240 (575) 984-8200

SCALE: 1" = 100'
DATE: 10-5-2018
SURVEYED BY: BK/AS
DRAWN BY: LPS
APPROVED BY: RMH
SHEET: 1 OF 1