

District I
1625 N. French Dr., Hobbs, NM 88240
Phone: (575) 393-6161 Fax: (575) 393-0720
District II
811 S. First St., Artesia, NM 88210
Phone: (575) 748-1283 Fax: (575) 748-9720
District III
1000 Rio Brazos Road, Aztec, NM 87410
Phone: (505) 334-6178 Fax: (505) 334-6170
District IV
1220 S. St. Francis Dr., Santa Fe, NM 87505
Phone: (505) 476-3460 Fax: (505) 476-3462

State of New Mexico
Energy, Minerals & Natural Resources
Department
OIL CONSERVATION DIVISION
1220 South St. Francis Dr.
Santa Fe, NM 87505

OCT 26 2018

FORM C-102

Revised August 1, 2011

DISTRICT II-ARTESIA-0010 Done copy to appropriate

District Office

☐ AMENDED REPORT

WELL LOCATION AND ACREAGE DEDICATION PLAT

¹ API Number 30-015-44659	² Pool Code 98220	³ Pool Name PURPLE SAGE; WOLFCAMP(GAS)
⁴ Property Code 320070	⁵ Property Name NORRIS THORNTON COM RB	⁶ Well Number #204H
⁷ GRID No. 228937	⁸ Operator Name MATADOR PRODUCTION COMPANY	⁹ Elevation 3135'

¹⁰Surface Location

UL or lot no.	Section	Township	Range	Lot Idn	Feet from the	North/South line	Feet from the	East/West line	County
P	23	23-S	27-E	-	189'	SOUTH	393'	EAST	EDDY

¹¹Bottom Hole Location If Different From Surface

UL or lot no.	Section	Township	Range	Lot Idn	Feet from the	North/South line	Feet from the	East/West line	County
M	23	23-S	27-E	-	336'	SOUTH	241'	WEST	EDDY

¹² Dedicated Acres 320	¹³ Joint or Infill	¹⁴ Consolidation Code	¹⁵ Order No.
--------------------------------------	-------------------------------	----------------------------------	-------------------------

No allowable will be assigned to this completion until all interests have been consolidated or a non-standard unit has been approved by the division.

¹⁶ BOTTOM HOLE LOCATION NEW MEXICO EAST NAD 1927 X=551022 Y=467150 LAT.: N 32.2842045 LONG.: W 104.1682335 NAD 1983 X=592204 Y=467209 LAT.: N 32.2843240 LONG.: W 104.1687315 MD = 14497'	LAST TAKE POINT NEW MEXICO EAST NAD 1927 X=551165 Y=467165 LAT.: N 32.2842460 LONG.: W 104.1677695 NAD 1983 X=592347 Y=467224 LAT.: N 32.2843656 LONG.: W 104.1682675 MD = 14351'	FIRST TAKE POINT NEW MEXICO EAST NAD 1927 X=555704 Y=467236 LAT.: N 32.2844205 LONG.: W 104.1530827 NAD 1983 X=596886 Y=467295 LAT.: N 32.2845403 LONG.: W 104.1535801 MD = 9800'	PENTRATION POINT NEW MEXICO EAST NAD 1927 X=556167 Y=467135 LAT.: N 32.2841403 LONG.: W 104.1515834 NAD 1983 X=597350 Y=467194 LAT.: N 32.2842602 LONG.: W 104.1520808 MD = 9307'	KICK OFF POINT NEW MEXICO EAST NAD 1927 X=556390 Y=467086 LAT.: N 32.2840043 LONG.: W 104.1508625 NAD 1983 X=597573 Y=467145 LAT.: N 32.2841241 LONG.: W 104.1513598 MD = 8840'
--	--	--	--	--

DETAIL VIEW
SCALE: 1" = 300'

SURFACE LOCATION
NEW MEXICO EAST
NAD 1927
X=555664
Y=467013
LAT.: N 32.2838083
LONG.: W 104.1532105
NAD 1983
X=596847
Y=467072
LAT.: N 32.2839280
LONG.: W 104.1537079

SEE DETAIL

¹⁷OPERATOR CERTIFICATION
I hereby certify that the information contained herein is true and complete to the best of my knowledge and belief, and that this organization either owns a working interest or unleased mineral interest in the land including the proposed bottom hole location or has a right to drill this well at this location pursuant to a contract with an owner of such a mineral or working interest, or to a voluntary pooling agreement or a compulsory pooling order heretofore entered by the division.

Sara Hartsfield
Signature Date

Sara Hartsfield
Printed Name

shartsfield@matadorresources.com
E-mail Address

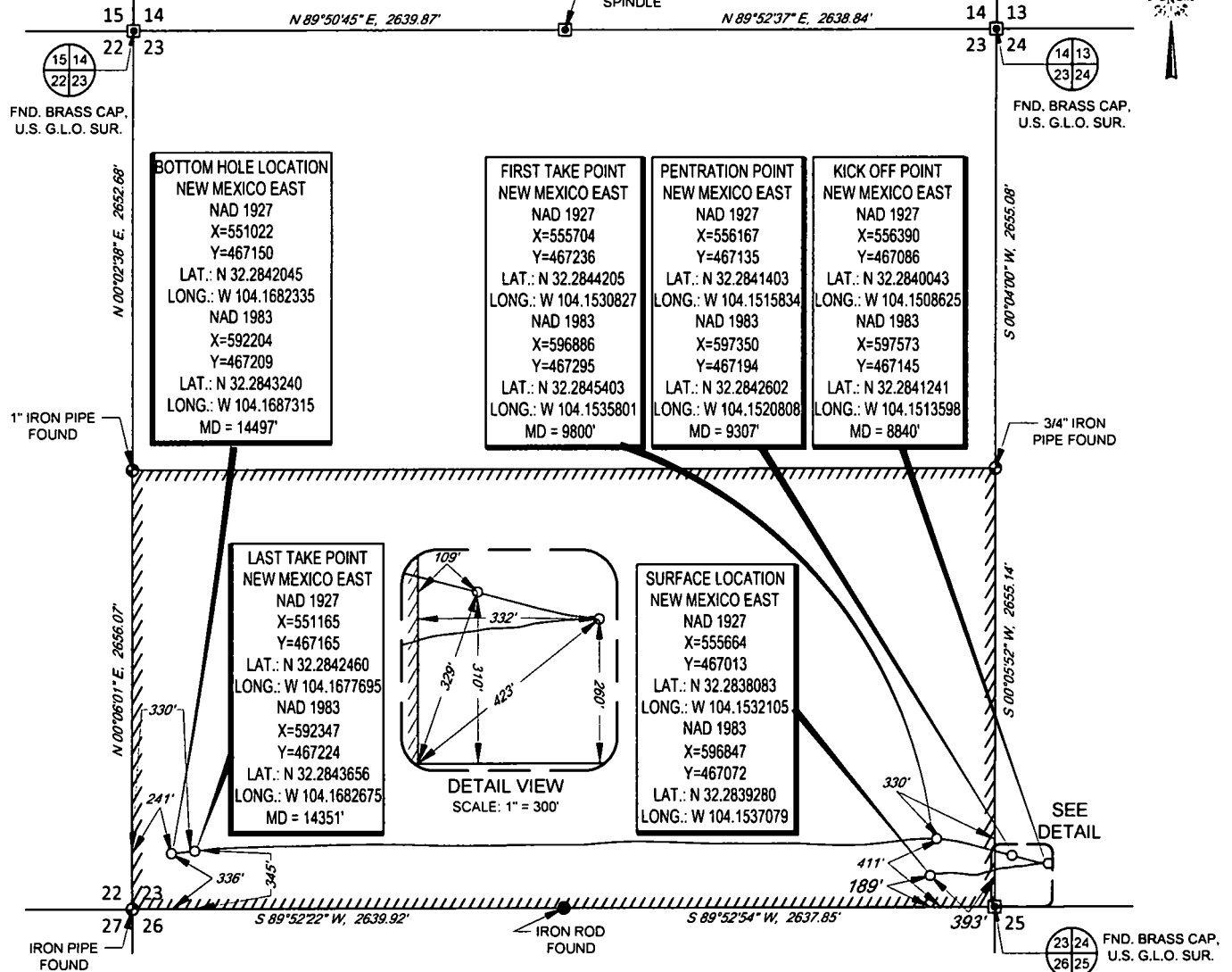
¹⁸SURVEYOR CERTIFICATION
I hereby certify that the well location shown on this plat was plotted from field notes of actual surveys made by me or under my supervision, and that the same is true to the best of my belief.

11/22/2017
Date of Survey
Signature and Seal of Professional Surveyor
MICHAEL BROWN
NEW MEXICO
18329
PROFESSIONAL SURVEYOR
Certificate Number

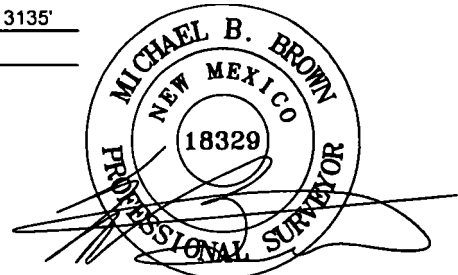
SCALE: 1" = 1000'

0' 500' 1000'

SECTION 23, TOWNSHIP 23-S, RANGE 27-E, N.M.P.M.
EDDY COUNTY, NEW MEXICO



TOPOGRAPHIC
LOYALTY INNOVATION LEGACY
1400 EVERMAN PARKWAY, Ste. 146 • FT. WORTH, TEXAS 76140
TELEPHONE: (817) 744-7512 • FAX (817) 744-7554
2903 NORTH BIG SPRING • MIDLAND, TEXAS 79705
TELEPHONE: (432) 682-1653 OR (800) 767-1653 • FAX (432) 682-1743
WWW.TOPOGRAPHIC.COM



Michael Blake Brown, P.S. No. 18329
OCTOBER 19, 2018

NORRIS THORNTON COM RB #204H AS-COMPLETED	REVISION:		NOTES:
	INT	DATE	
DATE: 10/19/18			<p>1. ORIGINAL DOCUMENT SIZE: 8.5" X 11"</p> <p>2. ALL BEARINGS, DISTANCES, AND COORDINATE VALUES CONTAINED HEREIN ARE GRID BASED UPON THE NEW MEXICO COORDINATE SYSTEM OF 1983, EAST ZONE, U.S. SURVEY FEET.</p> <p>3. THIS WELL LOCATION SHOWN HEREON HAS BEEN SURVEYED ON THE GROUND UNDER MY SUPERVISION AND PREPARED ACCORDING TO THE EVIDENCE FOUND AT THE TIME OF SURVEY, AND DATA PROVIDED BY MATADOR PRODUCTION COMPANY. THIS CERTIFICATION IS MADE AND LIMITED TO THOSE PERSONS OR ENTITIES SHOWN ON THE FACE OF THIS PLAT AND IS NON-TRANSFERABLE. THIS SURVEY IS CERTIFIED FOR THIS TRANSACTION ONLY.</p>
FILE: AD_NORRIS_THORNTON_COM_RB_204H			
DRAWN BY: AMD			
SHEET: 1 OF 1			