

District I
1625 N. French Dr., Hobbs, NM 88240
Phone: (575) 393-6161 Fax: (575) 393-0720

District II
811 S. First St., Artesia, NM 88210
Phone: (575) 748-1283 Fax: (575) 748-9720

District III
1000 Rio Brazos Road, Aztec, NM 87410
Phone: (505) 334-6178 Fax: (505) 334-6170

District IV
1220 S. St. Francis Dr., Santa Fe, NM 87505
Phone: (505) 476-3460 Fax: (505) 476-3462

State of New Mexico
Energy Minerals and Natural Resources

Form C-101
Revised July 18, 2013

Oil Conservation Division
NM OIL CONSERVATION DIVISION
1220 South St. Francis Dr. ARTESIA DISTRICT
Santa Fe, NM 87505 **NOV 26 2018**

APPLICATION FOR PERMIT TO DRILL, RE-ENTER, DEEPEN, RE-ENTER, OR ADD A ZONE

| | | |
|---|-----------------------------------|--------------------------------|
| 1. Operator Name and Address Solaris Water Midstream, LLC 701 Tradewinds Blvd., Suite C, Midland, TX 79706 | | 2. OGRID Number 371643 |
| | | 3. API Number 30-015- 45458 |
| 4. Property Code 322903 (TBD) | 5. Property Name Centaurus SWD | 6. Well No. 1 |

7. Surface Location
(To be verified by field survey)

| | | | | | | | | | |
|---------------|---------------|-----------------|--------------|--------------|-------------------|-----------------|----------------|-----------------|----------------|
| UL - Lot L | Section 19 | Township 25S | Range 28E | Lot Idn 3 | Feet from 2437 | N/S Line FSL | Feet From 1 | E/W Line FWL | County EDDY |
|---------------|---------------|-----------------|--------------|--------------|-------------------|-----------------|----------------|-----------------|----------------|

8. Proposed Bottom Hole Location
(To be verified by field survey)

| | | | | | | | | | |
|---------------|---------------|-----------------|--------------|--------------|-------------------|-----------------|----------------|-----------------|----------------|
| UL - Lot L | Section 19 | Township 25S | Range 28E | Lot Idn 3 | Feet from 2437 | N/S Line FSL | Feet From 1 | E/W Line FWL | County EDDY |
|---------------|---------------|-----------------|--------------|--------------|-------------------|-----------------|----------------|-----------------|----------------|

9. Pool Information

| | |
|-------------------------------------|--------------------|
| Pool Name SWD; Devonian-Silurian | Pool Code 97869 |
|-------------------------------------|--------------------|

Additional Well Information

| | | | | |
|------------------------------|-------------------------------|---|------------------------------|--|
| 11. Work Type N | 12. Well Type SWD | 13. Cable/Rotary R | 14. Lease Type P | 15. Ground Level Elevation 3023' |
| 16. Multiple No | 17. Proposed Depth 14,865' | 18. Formation Fusselman | 19. Contractor Silver Oak | 20. Spud Date 2/01/2019 |
| Depth to Ground water 15' | | Distance from nearest fresh water well >1 mile | | Distance to nearest surface water 1776' |

☒ We will be using a closed-loop system in lieu of lined pits


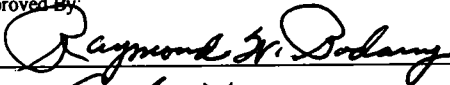

21. Proposed Casing and Cement Program

| Type | Hole Size | Casing Size | Casing Weight/ft | Setting Depth | Sacks of Cement | Estimated TOC |
|--------------|-----------|-------------|------------------|-----------------|-----------------|---------------|
| Surface | 26.5" | 20.0" | 94.0 lb/ft | 650' | 750 | SURFACE |
| Intermediate | 17.5" | 13.375" | 68.0 lb/ft | 3100' | 1900 | SURFACE |
| Production | 12.25" | 9.875" | 62.8 lb/ft | 9600' | 1650 | SURFACE |
| Liner | 8.5 | 7.625" | 39.0 lb/ft | 9300'-13,865' | 450 | TOL |
| Openhole | 6.5 | -- | -- | 13,865'-14,865' | | |

Casing/Cement Program: Additional Comments

22. Proposed Blowout Prevention Program

| Type | Working Pressure | Test Pressure | Manufacturer |
|-------------------------------|------------------|---------------|-----------------------|
| Double Hydraulic/Blinds, Pipe | 5000 (5M) | 8000 | Shaffer or Equivalent |

| | | | |
|---|---------------------|---|--|
| 23. I hereby certify that the information given above is true and complete to the best of my knowledge and belief. I further certify that I have complied with 19.15.14.9 (A) NMAC <input type="checkbox"/> and/or 19.15.14.9 (B) NMAC <input type="checkbox"/> , if applicable. Signature:  | | OIL CONSERVATION DIVISION | |
| Printed name: Ben Stone | | Approved By:  | |
| Title: Agent for Solaris Water Midstream, LLC | | Title:  | |
| E-mail Address: ben@sosconsulting.us | | Approved Date: 11-26-18 Expiration Date: 11-26-20 | |
| Date: 11/26/2018 | Phone: 903-488-9850 | Conditions of Approval Attached APPROVED C-108 | |

**NM OIL CONSERVATION
ARTESIA DISTRICT**

NOV 26 2018

Form C-102
Revised August 1, 2011

DISTRICT I
1625 N. French Dr., Hobbs, NM 88240
Phone (575) 593-6161 Fax: (575) 593-0720

DISTRICT II
811 S. First St., Artesia, NM 88210
Phone (575) 745-1255 Fax: (575) 745-0725

DISTRICT III
1000 Rio Brazos Rd., Aztec, NM 87410
Phone (505) 234-6175 Fax: (505) 234-6170

DISTRICT IV
1220 S. St. Francis Dr., Santa Fe, NM 87505
Phone (505) 476-3460 Fax: (505) 476-3465

State of New Mexico
Energy, Minerals and Natural Resources Department

OIL CONSERVATION DIVISION
1220 South St. Francis Dr.
Santa Fe, New Mexico 87505

RECEIVED

Submit one copy to appropriate
District Office

WELL LOCATION AND ACREAGE DEDICATION PLAT

☐ AMENDED REPORT

| | | |
|-----------------------------------|---|--|
| API Number 30-015-15458 | Pool Code 97869 | Pool Name SWD; DEVONIAN-SILURIAN |
| Property Code 322903 | Property Name CENTAURUS SWD | Well Number 1 |
| OGRID No. 371643 | Operator Name SOLARIS WATER MIDSTREAM | Elevation 3023' |

Surface Location

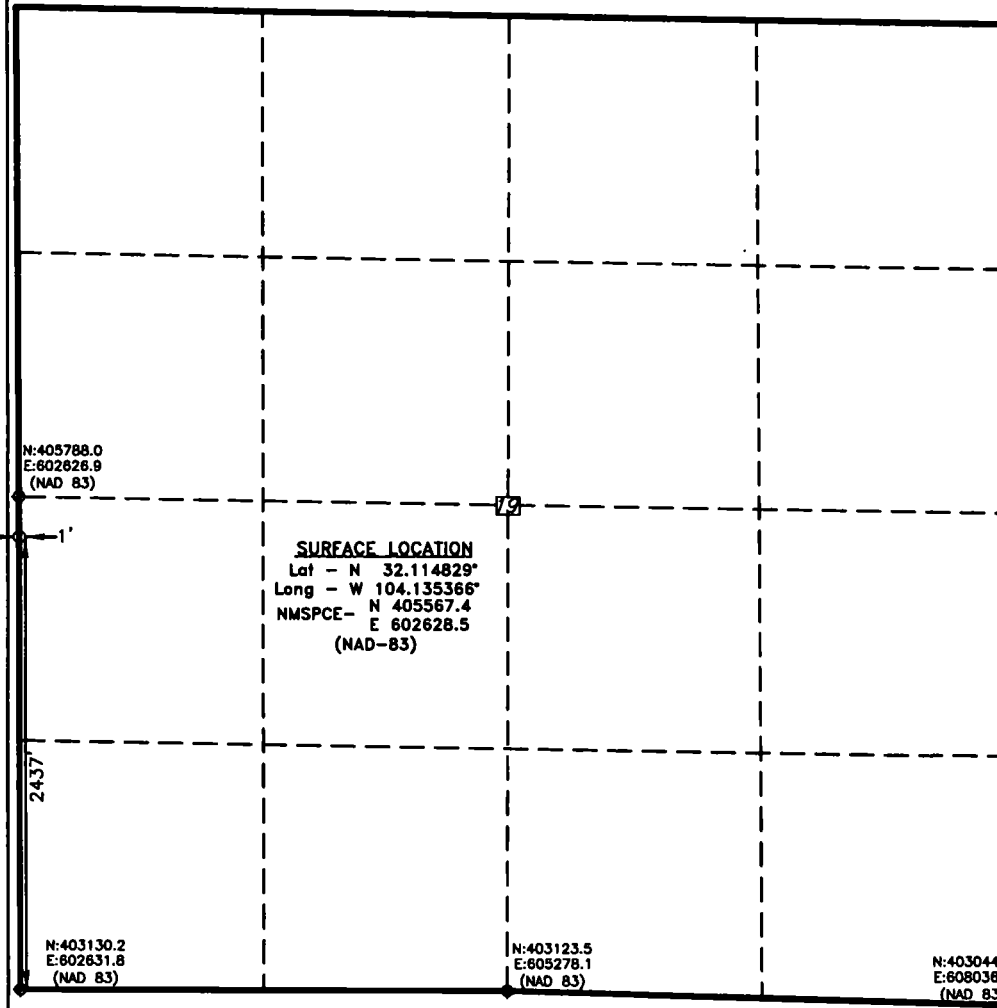
| UL or lot No. | Section | Township | Range | Lot Idn | Feet from the | North/South line | Feet from the | East/West line | County |
|---------------|---------|----------|-------|---------|---------------|------------------|---------------|----------------|--------|
| L | 19 | 25 S | 28 E | 3 | 2437 | SOUTH | 1 | WEST | EDDY |

Bottom Hole Location If Different From Surface

| UL or lot No. | Section | Township | Range | Lot Idn | Feet from the | North/South line | Feet from the | East/West line | County |
|---------------|---------|----------|-------|---------|---------------|------------------|---------------|----------------|--------|
| | | | | | | | | | |

| Dedicated Acres | Joint or Infill | Consolidation Code | Order No. |
|-----------------|-----------------|--------------------|-----------|
| | | | |

**NO ALLOWABLE WILL BE ASSIGNED TO THIS COMPLETION UNTIL ALL INTERESTS HAVE BEEN CONSOLIDATED
OR A NON-STANDARD UNIT HAS BEEN APPROVED BY THE DIVISION**



OPERATOR CERTIFICATION

I hereby certify that the information contained herein is true and complete to the best of my knowledge and belief, and that this organization either owns a working interest or undivided mineral interest in the land including the proposed bottom hole location or has a right to drill this well at this location pursuant to a contract with an owner of such a mineral or working interest, or to a voluntary pooling agreement or a compulsory pooling order heretofore entered by the division.

Signature: *Ben Stone* Date: **11/26/2018**

Printed Name: **Ben Stone**

Email Address: **ben@sosconsulting.us**

SURVEYOR CERTIFICATION

I hereby certify that the well location shown on this plat was plotted from field notes of actual surveys made by me or under my supervision, and that the same is true and correct to the best of my belief.

Date Surveyed: **NOVEMBER 26, 2018**

Signature: *[Signature]* Professional Surveyor

Certificate No. **7977**

Scale: **1" = 1000'**
WO Num.: **34180**

RWP 11-26-18

Solaris Water Midstream, LLC

Centaurus SWD Well No.1

2437' FSL & 1' FWL

Section 19, Twp 25-S, Rng 28-E

Eddy County, New Mexico

Well Program - New Drill

Objective: Drill new well for commercial salt water disposal into the Devonian, Silurian and Fusselman (mudlogging and e-logging to determine final depths) per SWD-(pending).

1. Geologic Information - Devonian Formation

The Devonian, Silurian and Fusselman all consist of carbonates including light colored dolomite and chert intervals interspersed with some tight limestone intervals. Several thick sections of porous dolomite capable of taking water are present within the subject formations in the area. Depth control data was inferred from deep wells in the area. If the base of Devonian and top of Silurian and/or Ordovician rocks come in as expected the well will only be drilled deep enough for adequate logging rathole.

Estimated Formation Tops:

| | |
|----------------|--------|
| Castile | 617' |
| Bell Canyon | 2325' |
| Cherry Canyon | 3107' |
| Bone Spring | 5885' |
| Wolfcamp | 9004' |
| Strawn | 11415' |
| Atoka | 11662' |
| Woodford Shale | 13500' |
| Devonian | 13863' |
| Fusselman | 14400' |
| Total Depth* | 14865' |
| Ellenburger | 18000' |

*Please see narrative portion of drilling/pipe specs for TD options.

2. Drilling Procedure

- MIRU drilling rig and associated equipment. Set up H₂S wind direction indicators; brief all personnel on Emergency Evacuation Routes.
- All contractors conduct safety meeting prior to current task. All equipment inspected daily. Repair / replace as required.
- Well spud operations commence.
- Mud logger monitoring returns; cuttings & waste hauled to specified facility. (Sundance, Lea County)
- After surface casing set/drilled; if H₂S levels >20ppm detected, implement H₂S Plan accordingly. (e.g., cease operations, shut in well, employ H₂S safety trailer & personnel safety devices, install flare line, etc. - refer to plan.)
- Spills contained & cleaned up immediately. Repair or otherwise correct the situation within 48 hours before resuming operations. Notify OCD within 24 hours. Remediation started ASAP if required. Operator shall comply with 19.15.29 NMAC and 19.15.30 NMAC, as appropriate.
- Sundry forms filed as needed - casing, cement, etc. - operations continue to completion.

Well Program - New Drill (cont.)

3. Casing program - Casing designed as follows:

| STRING | HOLE SZ | DEPTH | CSG SZ | COND | WT/GRD | CLLPS/BRS | TNSN |
|--------------|-----------|-----------------|---------|------|----------------------|--------------------------|------|
| | | | | | | (Minimum Safety Factors) | |
| Surface | 26.5" | 0-650' | 20.0" | New | 94.0 lb. J/K-55 ST&C | 1.125/1.1 | 1.8 |
| Intermediate | 17.5" | 0-3100' | 13.375" | New | 68.0 lb. HCL-80 BT&C | 1.125/1.1 | 1.8 |
| 2nd Inter | 12.25" | 0-9600' | 9.875" | New | 62.8 lb. Q-125 LT&C | 1.125/1.1 | 1.8 |
| Prod/ Liner* | 8.5" | 9600'-13,865' | 7.625" | New | 39.0 lb. P-110 FJ | 1.125/1.1 | 1.8 |
| Openhole* | 6.5" hole | 13,865'-14,865' | OH | n/a | n/a | n/a | n/a |

Notes:

- ✓ On both Intermediate casing strings, the cement will be designed to circulate to surface. Both strings will have cement bond logs run (radial, CET or equivalent) to surface.
- ✓ While running all casing strings, the pipe will be kept a minimum of 1/3 full at all times to avoid approaching the collapse pressure of casing.
- ✓ * Based on mudlogging and e-logs, 7.0" casing shoe is expected to be set at 13,865'. TD is expected to be 14,865' as determined by logging and suitable porosity has been exposed. Sundry notice will document such events and a C-105 completion report filed within 60 days.

4. Cementing Program:

Surface – LEAD Slurry: 550 sacks of Class C containing 4% gel + 2% CaCl₂ + .4 pps defoamer + .125 pps cello flake + 3 pps Koal Seal. Weight 13.7 ppg, yield 1.68 ft³/sack; TAIL Slurry: 200 sacks of Class C Neet containing 2% CaCl₂. Weight 14.8 ppg, yield 1.34 ft³/sack; 100% excess, circulate to surface.

1st Intermediate – LEAD Slurry: 1,350 sacks of Class C containing 4% gel + .4 pps defoamer + .125 pps cello flake + 5% NaCl. Weight 13.2 ppg, yield 1.83 ft³/sack; TAIL Slurry: 550 sacks of Class C Neet. Weight 14.8 ppg, yield 1.32 ft³/sack; 50% excess, circulate to surface.

2nd Intermediate – Stage 1 LEAD Slurry: 800 sacks of 50/50 POZ containing 10% gel + .4 pps defoamer + .125 pps cello flake + 1 pps Koal Seal + 5% NaCl. Weight 11.9 ppg, yield 2.473 ft³/sack; TAIL Slurry: 250 sacks of Class H containing 2% retarder + .2 pps defoamer. Weight 15.6 ppg, yield 1.18 ft³/sack; 25% excess. DV TOOL ~5300'; Stage 2 LEAD Slurry: 400 sacks of 50/50 POZ containing 10% gel + .4 pps defoamer + .125 pps cello flake + 1 pps Koal Seal + 5% NaCl. Weight 11.9 ppg, yield 2.473 ft³/sack; TAIL Slurry: 200 sacks of Class H containing 2% retarder + .2 pps defoamer. Weight 15.6 ppg, yield 1.18 ft³/sack; 35% excess. circulate to surface.

Prod Liner – Slurry: 450 sacks of 50/50 POZ Class H containing .3% retarder + .7% fluid loss additive + .2% dispersant + .4 pps defoamer + .1% Anti-Settling agent. Weight 15.2 ppg, yield 1.32 ft³/sack. 35% excess; TOC calculated @ Top of liner 11,700'.

Well Program - New Drill (cont.)

5. Pressure Control - BOP diagram is attached to this application. All BOP and related equipment shall comply with well control requirements as described NMOCD Rules and Regulations and API RP 53,

Section 17. Minimum working pressure of the BOP and related equipment required for the drilling shall be 5000 psi. The NMOCD Hobbs district office shall be notified a minimum of 4 hours in advance for a representative to witness BOP pressure tests. The test shall be performed by an independent service company utilizing a test plug (no cup or J-packer). The results of the test shall be recorded on a calibrated test chart submitted to the OCD district office. Test shall be conducted at:

- a. Installation;
- b. after equipment or configuration changes;
- c. at 30 days from any previous test, and;
- d. anytime operations warrant, such as well conditions

6. Mud Program & Monitoring - Mud will be balanced for all operations as follows:

| DEPTH | MUD TYPE | WEIGHT | FV | PV | YP | FL | Ph |
|-----------------|---------------|----------|-------|----|----|----|----------|
| 0-650' | FW Spud Mud | 8.5-9.2 | 70-40 | 20 | 12 | NC | 10.0 |
| 650'-3100' | Brine Water | 9.8-10.2 | 28-32 | NC | NC | NC | 10.0 |
| 3100'-9600' | FW/Gel | 8.7-9.0 | 28-32 | NC | NC | NC | 9.5-10.5 |
| 9600'-13,865' | XCD Brine Mud | 11.0- | 45-48 | 20 | 10 | <5 | 9.5-10.5 |
| 13,865'-14,865' | FW Mud | 8.4-8.6 | 28-30 | NC | NC | NC | 9.5-10.5 |

Mud and all cuttings monitored w/ cuttings recovered for disposal. Returns shall be visually and electronically monitored. In the event of H₂S, mud shall be adjusted appropriately by weight and H₂S scavengers.

7. Auxiliary Well Control and Monitoring – Hydraulic remote BOP operation, mudlogging to monitor returns.

8. H₂S Safety - This well and related facilities are not expected to have H₂S releases. However, there may be H₂S in the area. There are no private residences or public facilities in the area but a contingency plan has been developed. Solaris Water Midstream, LLC will have a company representative available to personnel throughout all operations. If H₂S levels greater than 10ppm are detected or suspected, the H₂S Contingency Plan will be implemented at the appropriate level.

H₂S Safety - There is a low risk of H₂S in this area. The operator will comply with the provisions of NMAC 19.15.11 and BLM Onshore Oil and Gas Order #6.

- a) Monitoring - all personnel will wear monitoring devices.
- b) Warning Sign - a highly visible H₂S warning sign will be placed for obvious viewing at the vehicular entrance point onto location.
- c) Wind Detection - two (2) wind direction socks will be placed on location.
- d) Communications - will be via cellular phones and/or radios located within reach of the driller, the rig floor and safety trailer when applicable.
- e) Alarms - will be located at the rig floor, circulating pump / reverse unit area and the flareline and will be set for visual (red flashing light) at 15 ppm and visual and audible (115 decibel siren) at 20 ppm.

Well Program - New Drill (cont.)

- f) Mud program - If H₂S levels require, proper mud weight, safe drilling practices and H₂S scavengers will minimize potential hazards.
- g) Metallurgy - all tubulars, pressure control equipment, flowlines, valves, manifolds and related equipment will be rated for H₂S service if required.

The Solaris Water Midstream, LLC H₂S Contingency Plan will be implemented if levels greater than 10ppm H₂S are detected.

9. Logging, Coring and Testing – Solaris Water Midstream, LLC expects to run;

- a. Mud logging through the interval will ensure the target interval remains Devonian and Silurian.
- b. CBL (Radial, CET or equivalent) on both intermediate casing strings.
- c. Standard porosity log suite from TD to approximately 9,000'.
- d. No corings or drill tests will be conducted. (The well may potentially be step rate tested in the future if additional injection pressures are required.)

10. Potential Hazards - No abnormal pressures or temperatures are expected.

No loss of circulation is expected to occur with the exception of drilling into the target disposal zone. All personnel will be familiar with the safe operation of the equipment being used to drill this well.

The maximum anticipated bottom-hole pressure is 7000 psi and the maximum anticipated bottom-hole temperature is 170° F.

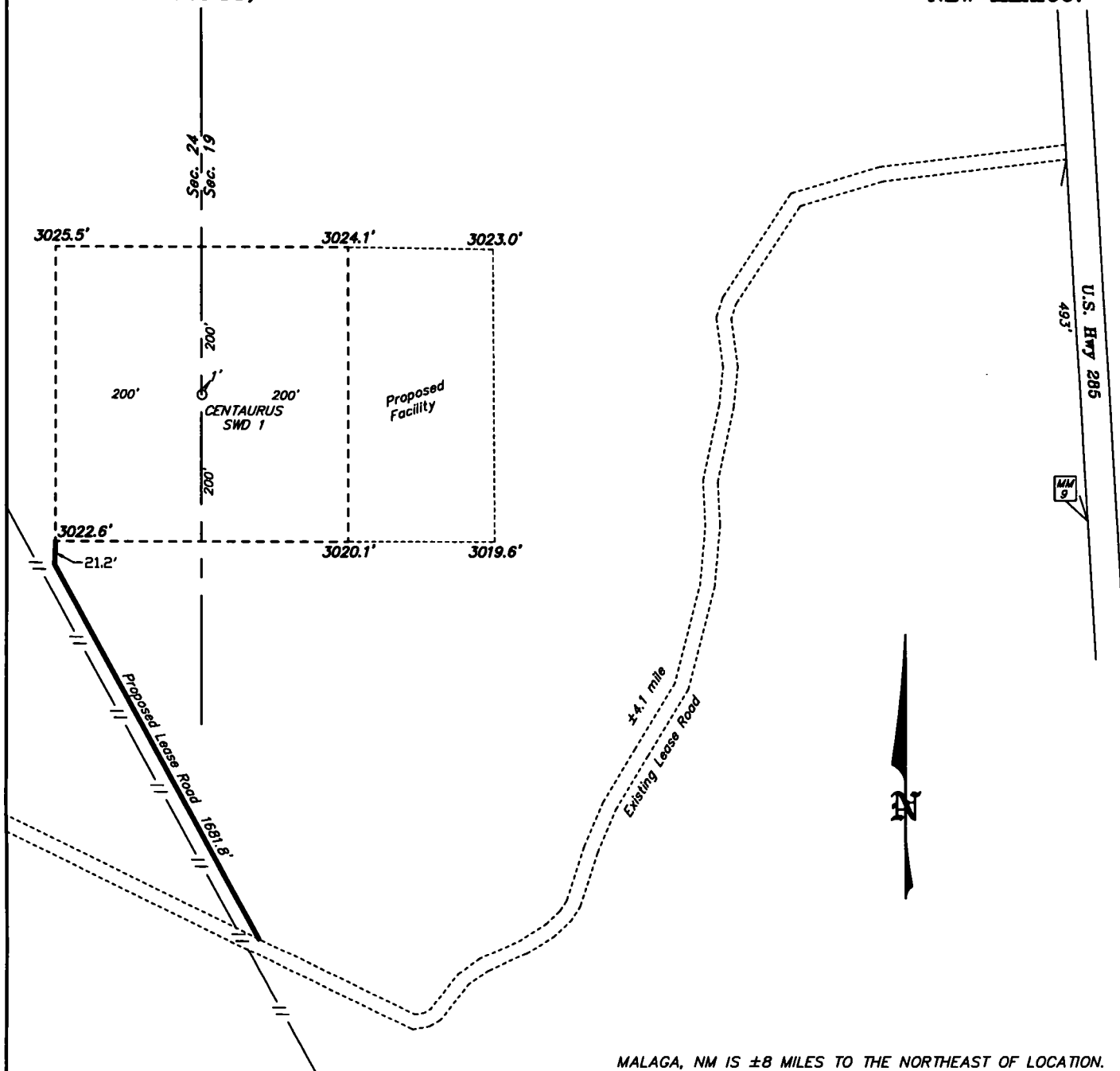
11. Waste Management - All drill cuttings and other wastes associated with and drilling operations will be transported to the Lea County Sundance facility (or alternate), permitted by the Environmental Bureau of the New Mexico Oil Conservation Division.

12. Anticipated Start Date - Upon approval of all permits for SWD, operations would begin within 30 days. Completion of the well operations will take six to seven weeks. Installation of the tank battery, berms, plumbing and other and associated equipment would be occurring during the same interval. In any event, it is not expected for the construction phase of the project to last more than 60 days, depending on availability of contractors and equipment. At the time of this submittal, and subject to the availability of the drilling contractor, the anticipated start date is:

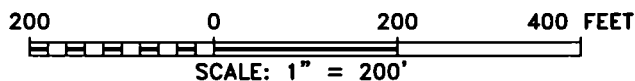
February 1, 2019.

13. Configure for Salt Water Disposal – Subsequent to SWD permit approval from OCD and prior to commencing any work, an NOI sundry(ies) will be submitted to configure the well for SWD and will detail the completion workover including all work otherwise described above, any change to the procedure noted herein and to perform mechanical integrity pressure test per BLM and OCD test procedures. (Notify NMOCD 24 hours prior.) The casing/tubing annulus will be monitored for communication with injection fluid or loss of casing integrity. Anticipated daily maximum volume is 35,000 bpd and average of 25,000 bpd at a maximum surface injection pressure of 2773 psi (0.2 psi/ft to uppermost injection interval, i.e., casing shoe). If satisfactory disposal rates cannot be achieved at default pressure of .2 psi/ft, Solaris Water Midstream, LLC will conduct a step-rate test and apply for an injection pressure increase 50 psi below parting pressure.

**SECTION 19 TOWNSHIP 25 SOUTH, RANGE 28 EAST, N.M.P.M.,
EDDY COUNTY, NEW MEXICO.**



MALAGA, NM IS ±8 MILES TO THE NORTHEAST OF LOCATION.



SOLARIS WATER MIDSTREAM

REF: CENTAURUS SWD 1 / WELL PAD TOPO

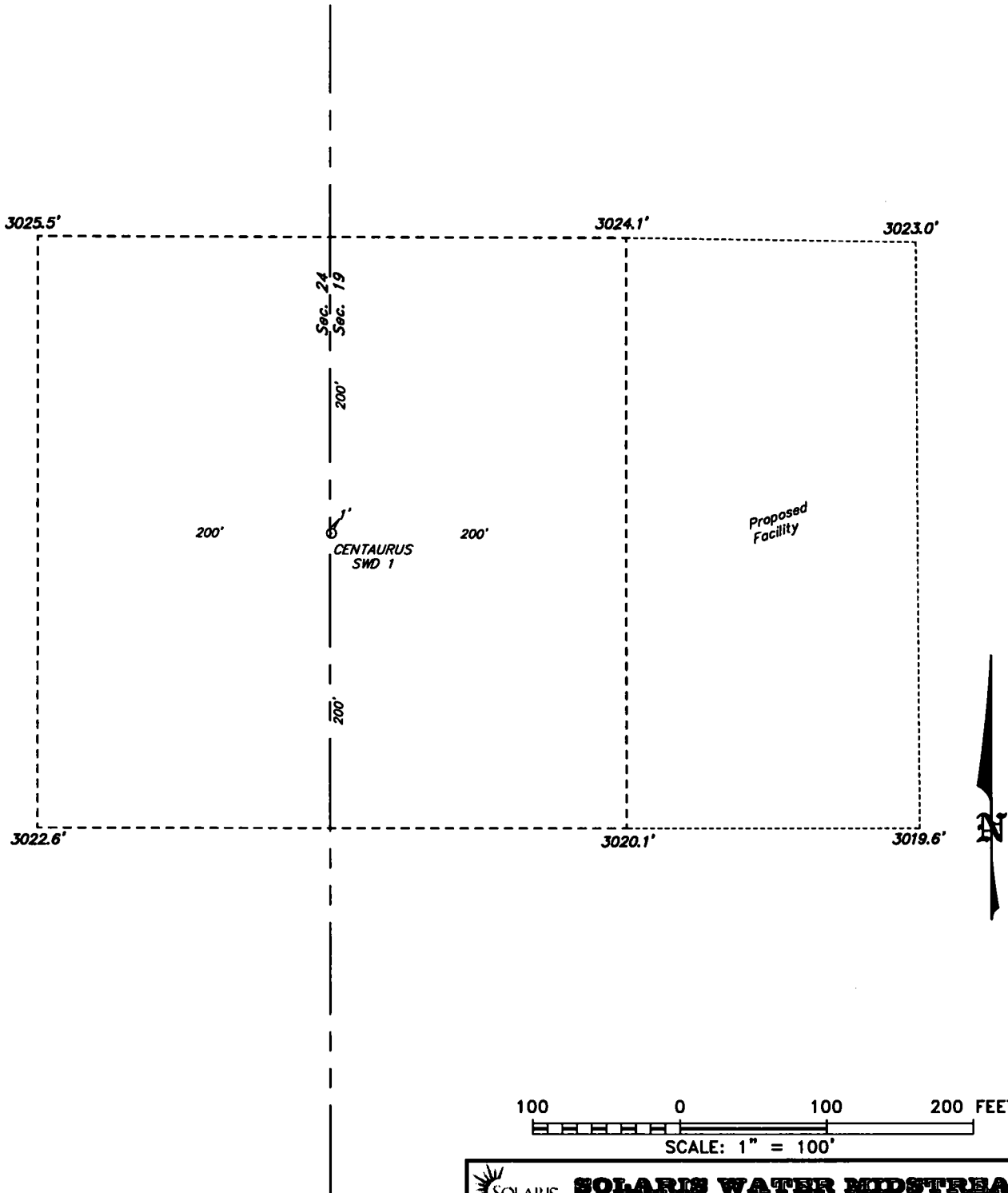
THE CENTAURUS SWD 1 LOCATED 2437' FROM
THE SOUTH LINE AND 1' FROM THE WEST LINE OF
SECTION 19, TOWNSHIP 25 SOUTH, RANGE 28 EAST,
N.M.P.M., EDDY COUNTY, NEW MEXICO.

**basin
surveys**

P.O. Box 1786 (575) 393-7316 - Office
1120 N. West County Rd. (575) 392-2208 - Fax
Hobbs, New Mexico 88241 basin-surveys.com

W.O. Number: 34180 | Drawn By: K. GOAD | Date: 11-08-2018 | Survey Date: 11-07-2018 | Sheet 1 of 1 Sheets

SECTION 19 TOWNSHIP 25 SOUTH, RANGE 28 EAST, N.M.P.M.,
EDDY COUNTY, NEW MEXICO.



SOLARIS WATER MIDSTREAM

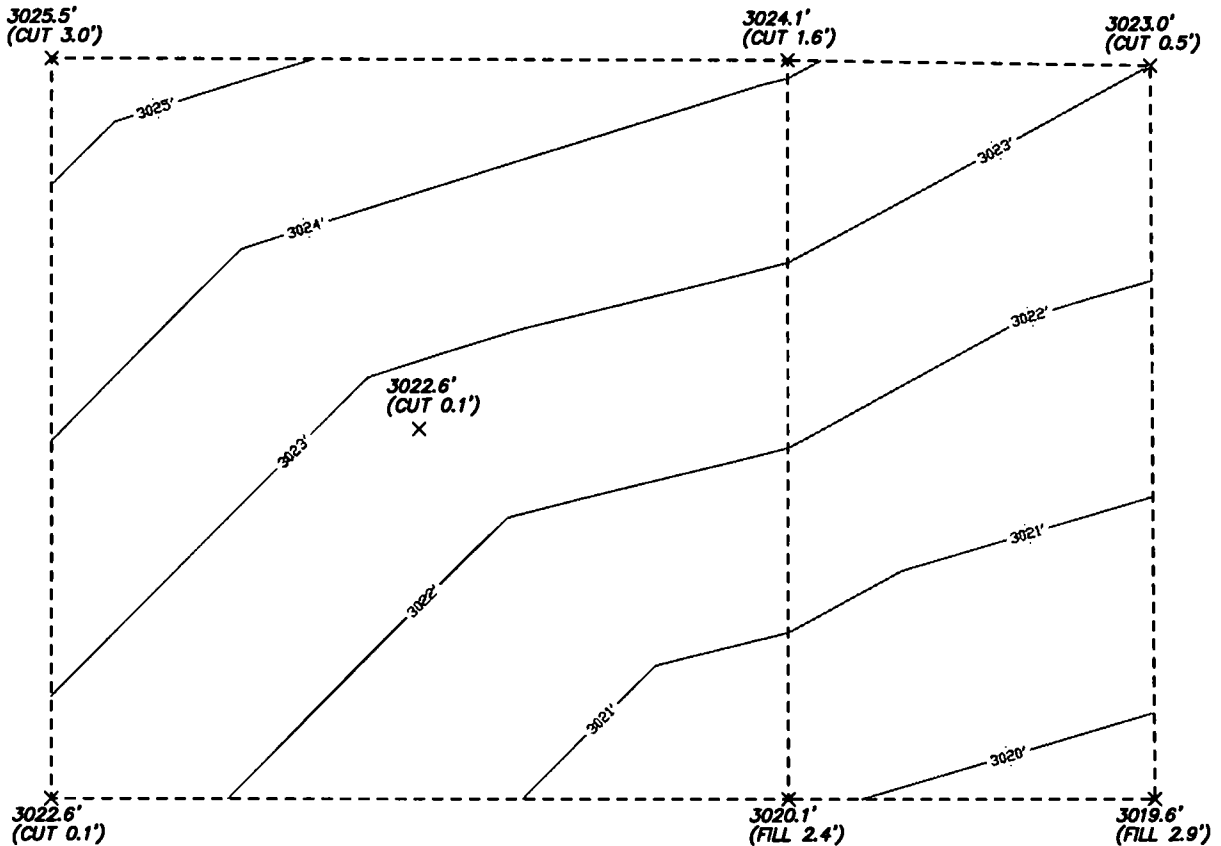
REF: CENTAURUS SWD 1 / WELL PAD TOPO

THE CENTAURUS SWD 1 LOCATED 2437' FROM
THE SOUTH LINE AND 1' FROM THE WEST LINE OF
SECTION 19, TOWNSHIP 25 SOUTH, RANGE 28 EAST,
N.M.P.M., EDDY COUNTY, NEW MEXICO.

basin
surveys
focused on excellence
in the oilfield

P.O. Box 1786 (575) 393-7316 - Office
1120 N. West County Rd. (575) 392-2206 - Fax
Hobbs, New Mexico 88241 basin-surveys.com

**SECTION 19 TOWNSHIP 25 SOUTH, RANGE 28 EAST, N.M.P.M.,
EDDY COUNTY, NEW MEXICO.**



100 0 100 200 FEET
SCALE: 1" = 100'



SOLARIS WATER MIDSTREAM

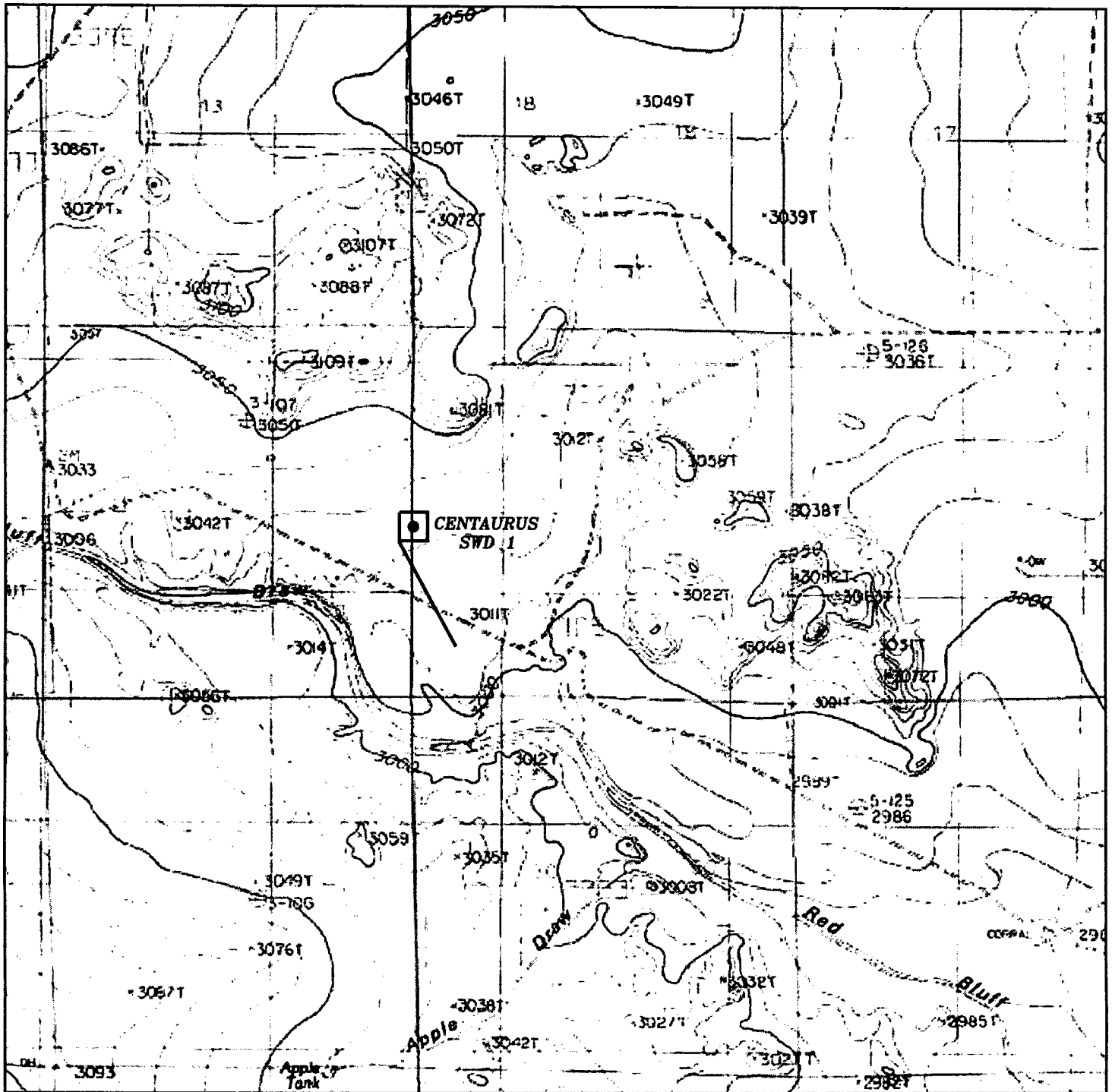
REF: CENTAURUS SWD 1 / CUT & FILL

THE CENTAURUS SWD 1 LOCATED 2437' FROM
THE SOUTH LINE AND 1' FROM THE WEST LINE OF
SECTION 19, TOWNSHIP 25 SOUTH, RANGE 28 EAST,
N.M.P.M., EDDY COUNTY, NEW MEXICO.

**basin
surveys**
focused on excellence
in the oilfield

P.O. Box 1786
1120 N. West County Rd.
Hobbs, New Mexico 88241
(575) 383-7316 - Office
(575) 392-2206 - Fax
basinsurveys.com

W.O. Number: 34180 | Drawn By: K. GOAD | Date: 11-08-2018 | Survey Date: 11-07-2018 | Sheet 1 of 1 Sheets



CENTAURUS SVD 1

Located 2437' FSL & 1' FWL

Section 19, Township 25 South, Range 28 East,
N.M.P.M., Eddy County, New Mexico.

basin
surveys
focused on excellence
in the oilfield

P.O. Box 1786
1120 N. West County Rd.
Hobbs, New Mexico 88241
(575) 393-7316 - Office
(575) 392-2206 - Fax
basinsurveys.com

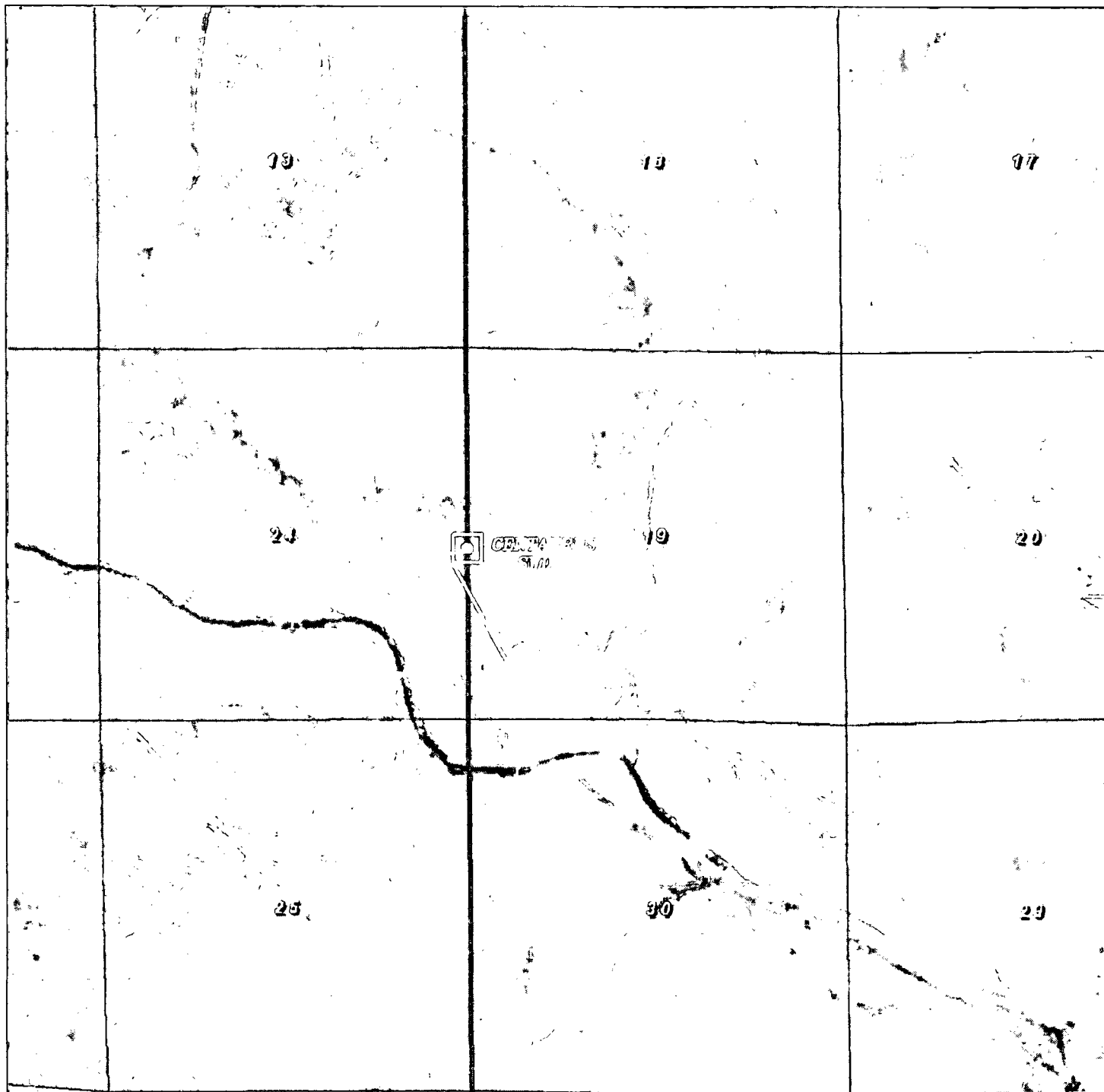
0' 1000' 2000' 3000' 4000'
SCALE: 1" = 2000'

W.O. Number: KJG - 34180

Survey Date: 11-07-2018

YELLOW TINT - USA LAND
BLUE TINT - STATE LAND
NATURAL COLOR - FEE LAND





CENTAURUS SWD 1
 Located 2437' FSL & 1' FWL
 Section 19, Township 25 South, Range 28 East,
 N.M.P.M., Eddy County, New Mexico.

basin
surveys
 focused on excellence
 in the oilfield

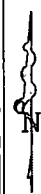
P.O. Box 1786
 1120 N. West County Rd.
 Hobbs, New Mexico 88241
 (575) 393-7316 - Office
 (575) 392-2206 - Fax
 basinsurveys.com

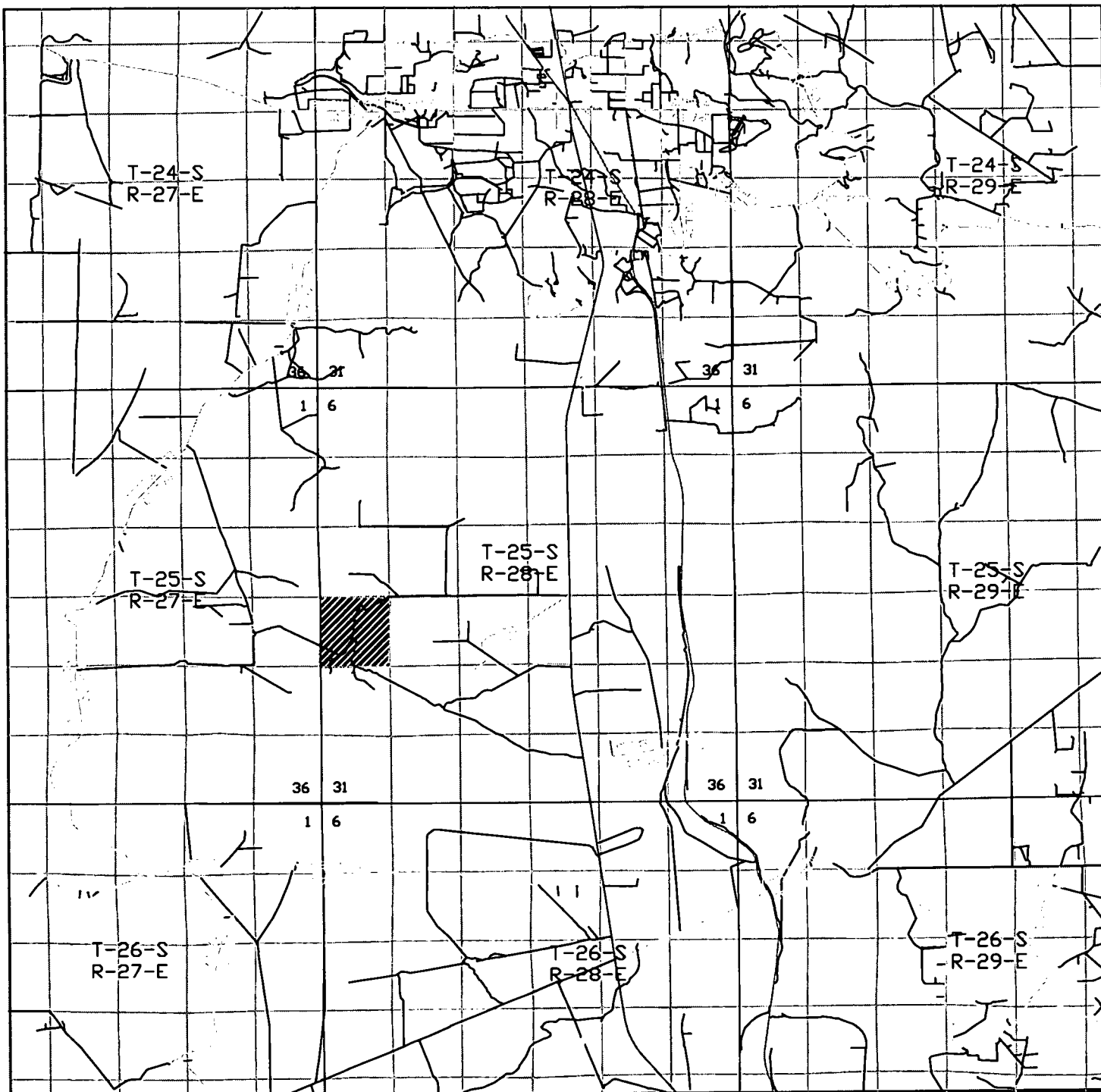
0' 1000' 2000' 3000' 4000'
 SCALE: 1" = 2000'

W.O. Number: KJG - 34180

Survey Date: 11-07-2018

YELLOW TINT - USA LAND
 BLUE TINT - STATE LAND
 NATURAL COLOR - FEE LAND

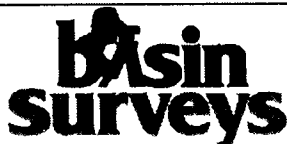




CENTAURUS SWD 1

Located 2437' FSL & 1' FWL

Section 19, Township 25 South, Range 28 East,
N.M.P.M., Eddy County, New Mexico.



focused on excellence
in the oilfield

P.O. Box 1786
1120 N. West County Rd.
Hobbs, New Mexico 88241
(575) 393-7316 - Office
(575) 392-2206 - Fax
basinsurveys.com

0 1 MI 2 MI 3 MI 4 MI

SCALE: 1" = 2 MILES

W.O. Number: KJG - 34180

Survey Date: 11-07-2018

YELLOW TINT - USA LAND
BLUE TINT - STATE LAND
NATURAL COLOR - FEE LAND



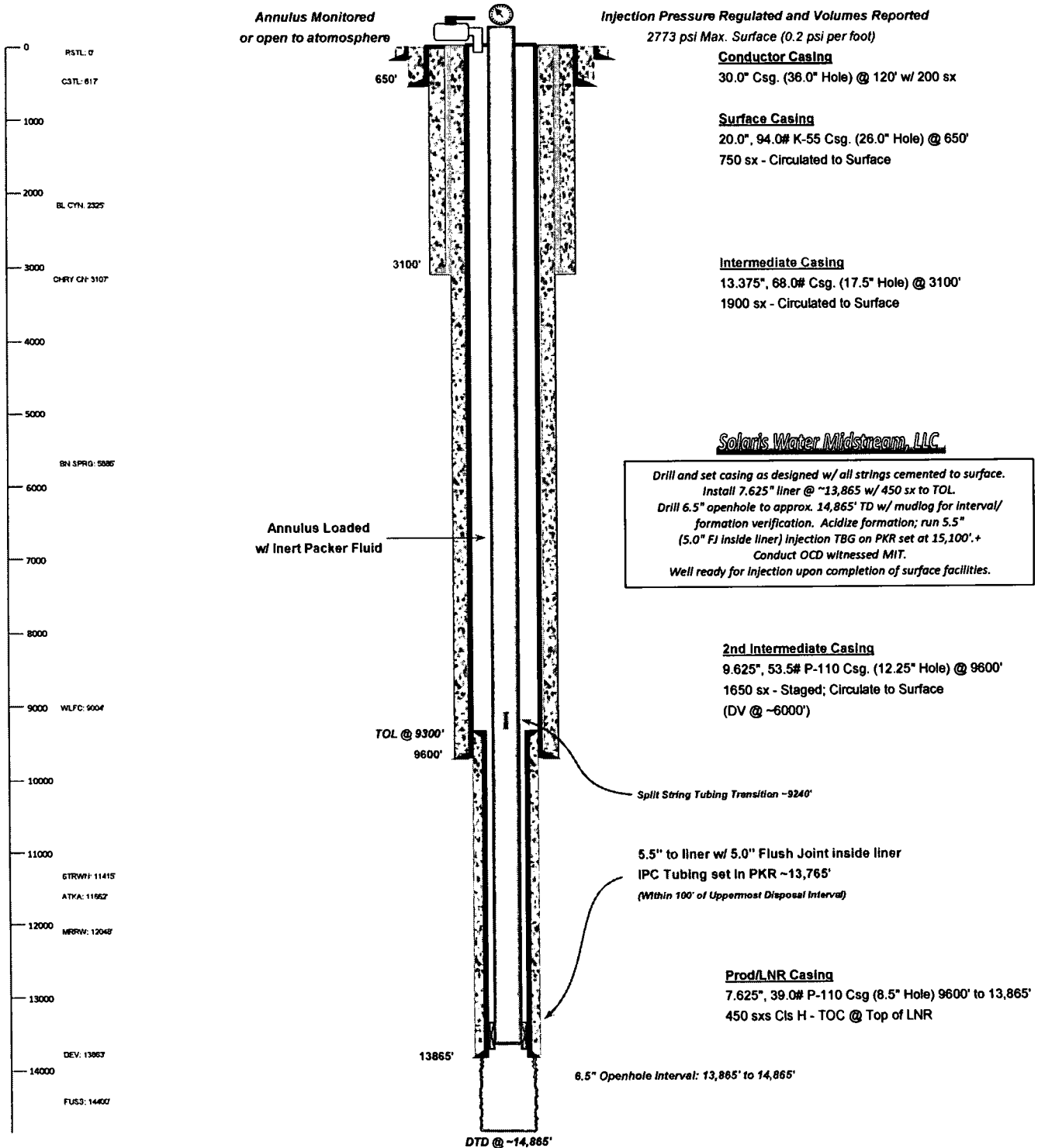


WELL SCHEMATIC - PROPOSED Centaurus SWD Well No.1

API 30-015-xxxxx
2437' FSL & 1' FWL, SEC. 19-25S-28E
EDDY COUNTY, NEW MEXICO

SWD; Devonian-Silurian (97869)

Spud Date: 2/01/2019
SWD Config Dt: 3/01/19

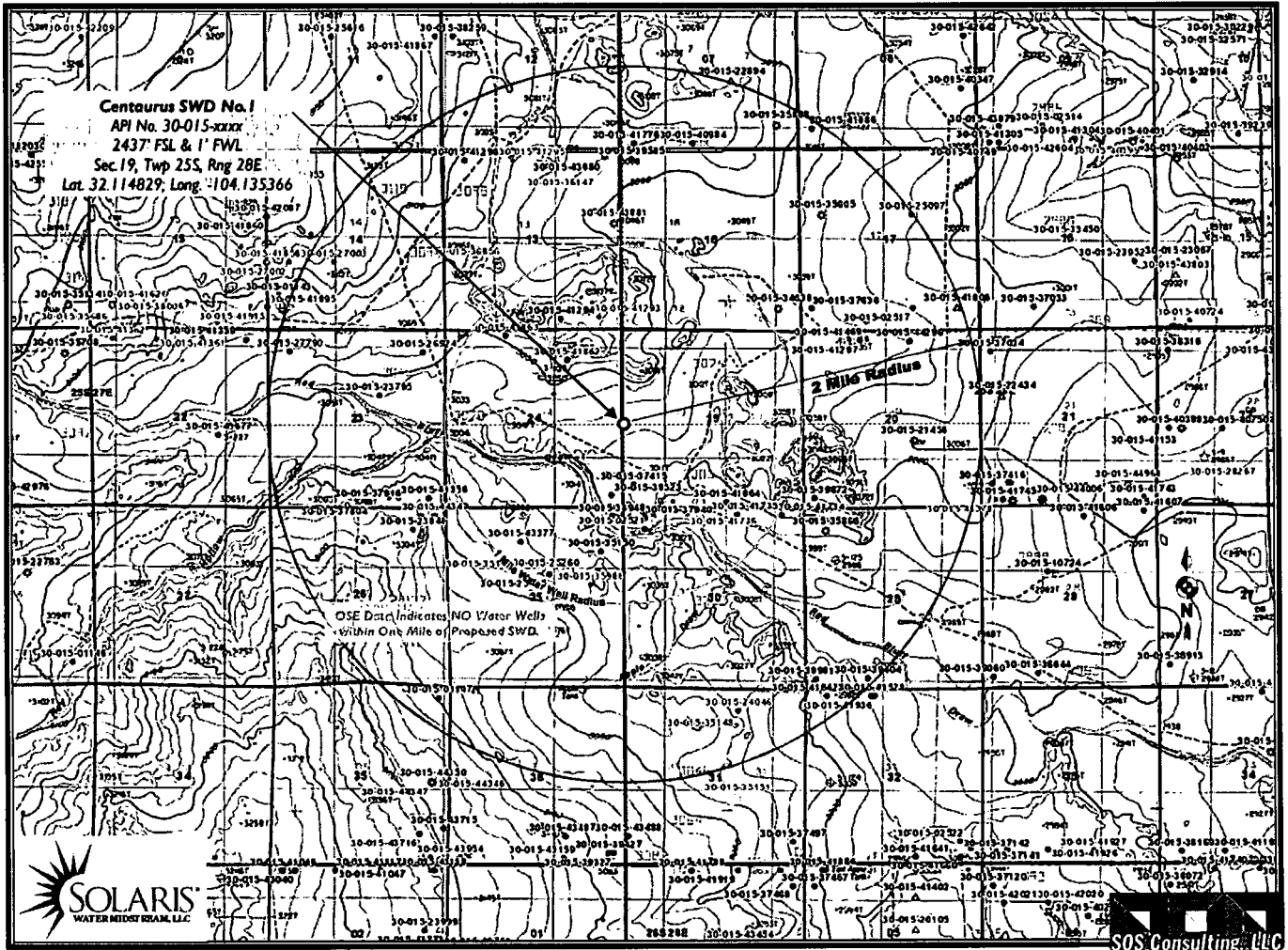


Drawn by: Ben Stone, 8/27/2018



Centaurus SWD No.1 - Area of Review / 2 Miles

(Attachment to NMOCD Form C-108 - Item V)

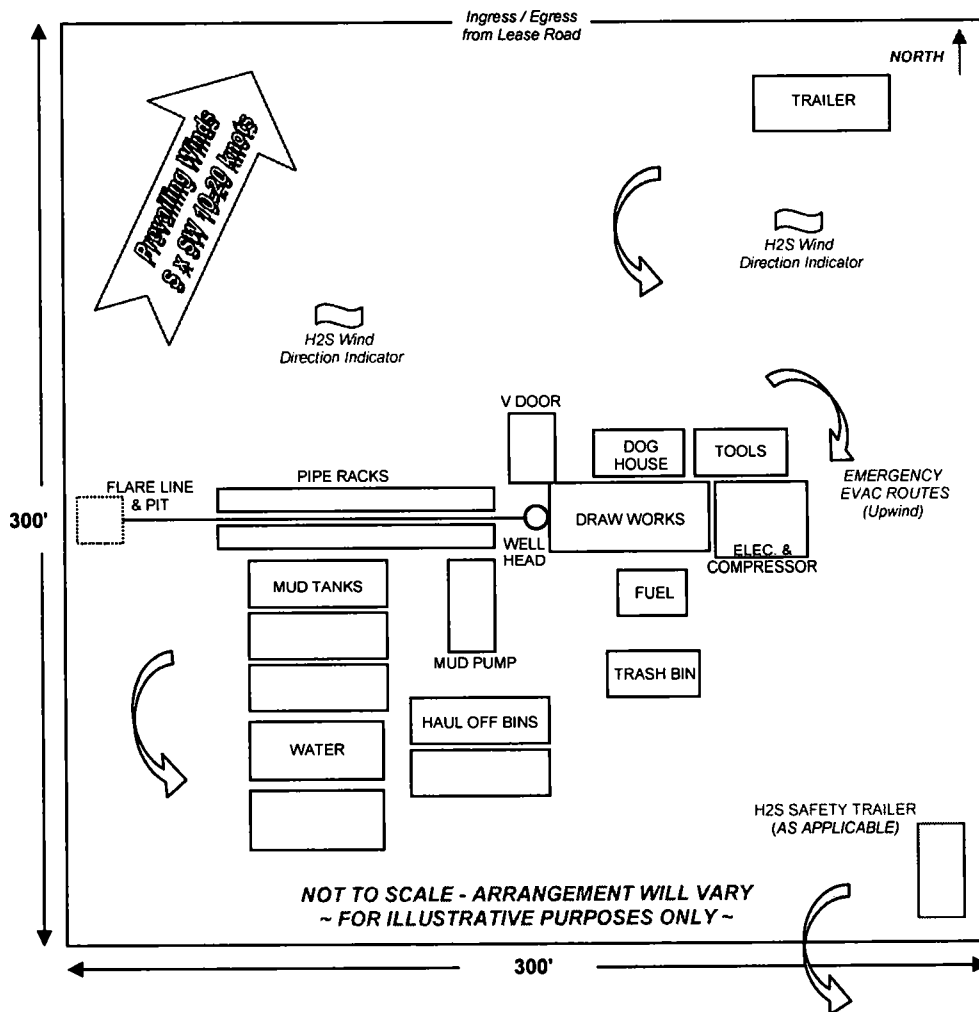


Standard Drill - Operating Procedure & Site Setup

ALL OPERATIONS CONDUCTED WITHIN EXISTING PAD SITE
NOT EXCEEDING SURVEYED SITE. ORIENTATION PER BEST FIT.

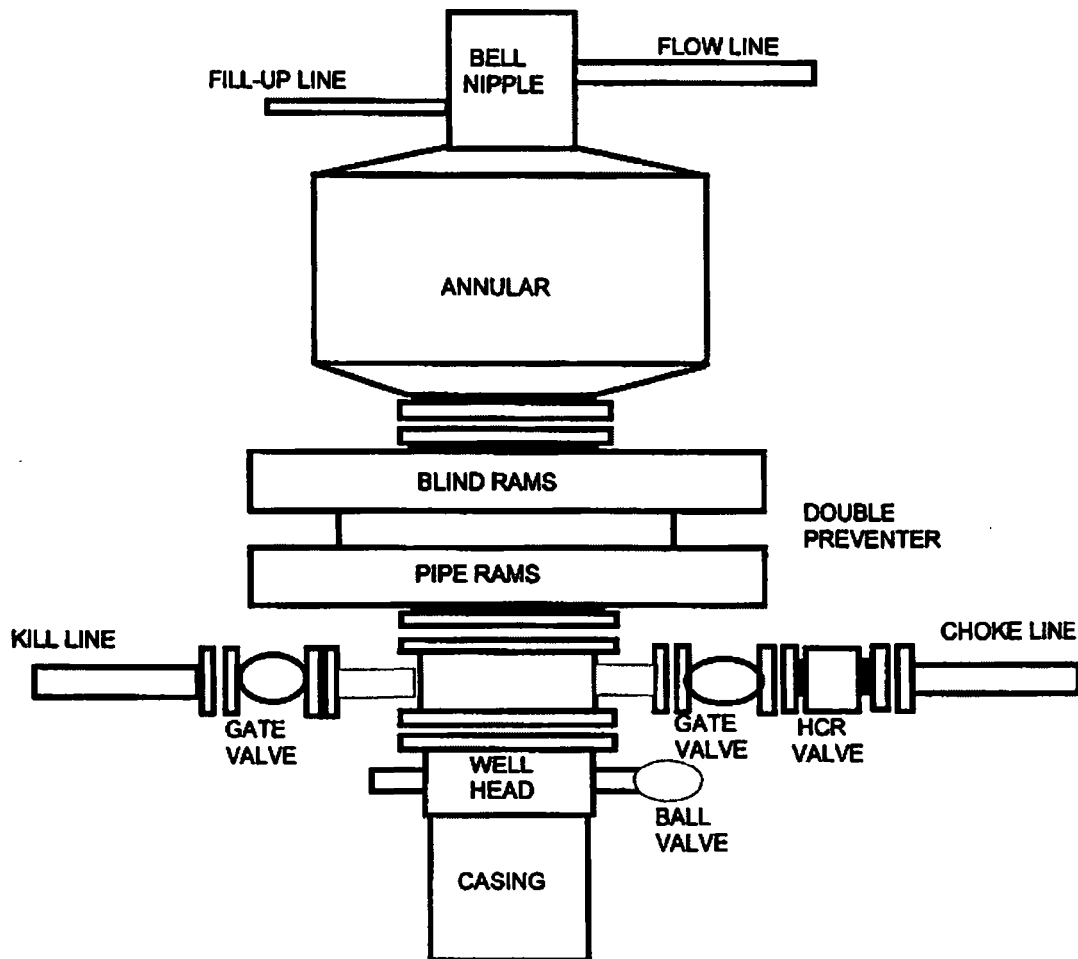
1. MIRU Drilling and drilling support contractors / equipment.
2. Set up H2S wind direction indicators; brief all personnel on Emergency Evacuation Routes.
3. All contractors conduct safety meeting prior to current task.
4. If H2S levels >20ppm detected, implement H2S Plan *accordingly*. (e.g., cease operations, shut in well, employ H2S safety trailer & personnel safety devices, install flare line, etc. - refer to plan.)
5. All equipment inspected daily. Repair / replace as required.
6. Mud logger monitoring returns; cuttings & waste hauled to specified facility. CRI - LEA COUNTY
7. Spills contained & cleaned up immediately. Repair or otherwise correct the situation within 48 hours before resuming operations. Notify OCD within 24 hours. Remediation started ASAP if required. Operator shall comply with 19.15.29 NMAC and 19.15.30 NMAC, as appropriate.
8. Sundry forms filed as needed - casing, cement, etc. - operations continue to completion.

TYPICAL LOCATION SETUP (V Door North)



Blow Out Preventer Diagram

5000 PSI WORKING PRESSURE



Klein, Ranell, EMNRD

From: Tammy Link <TLink@matadorresources.com>
Sent: Monday, October 29, 2018 9:44 AM
To: Klein, Ranell, EMNRD
Subject: [EXT]
Attachments: BLM Submitted_3160-4 Completion Report & AIS Drilled Plat_Charlie Sweeney Fed Com 208H-10-29-18 Amended.pdf

I have made some changes to this, Amended and will submit to WIS (BLM).

Thank you,

Tammy R. Link
Production Analyst | Matador Resources Company/Roswell Office
575.623.6601 tlink@matadorresources.com



This transmission is strictly confidential. If you are not the intended recipient of this message, you may not disclose, print, copy or disseminate this information. If you have received this in error, please reply and notify the sender (only) and delete the message. Unauthorized interception of this e-mail is a violation of federal criminal law. This communication does not reflect an intention by the sender or the sender's client or principal to conduct a transaction or make any agreement by electronic means. Nothing contained in this message or in any attachment shall satisfy the requirements for a writing, and nothing contained herein shall constitute a contract or electronic signature under the Electronic Signatures in Global and National Commerce Act, any version of the Uniform Electronic Transactions Act or any other statute governing electronic transactions.