

District I
1625 N. French Dr., Hobbs, NM 88240
Phone: (575) 393-6161 Fax: (575) 393-0720

District II
811 S. First St., Artesia, NM 88210
Phone: (575) 748-1283 Fax: (575) 748-9720

District III
1000 Rio Brazos Road, Aztec, NM 87410
Phone: (505) 334-6178 Fax: (505) 334-6170

District IV
1220 S. St. Francis Dr., Santa Fe, NM 87505
Phone: (505) 476-3460 Fax: (505) 476-3462

State of New Mexico
NM OIL CONSERVATION & Natural Resources Department
OIL CONSERVATION DIVISION
MAR 16 2010 20 South
Santa Fe, NM 87505
RECEIVED

Form C-102
Revised August 1, 2011
Submit one copy to appropriate
District Office.

☒ AMENDED REPORT

WELL LOCATION AND ACREAGE DEDICATION PLAT

AS-DRILLED

¹ API Number 30-015-44201	² Pool Code 98199	³ Pool Name PARKWAY; BONE SPRING, WEST
⁴ Property Code 317572	⁵ Property Name AGATE PWU 21-22	
⁷ OGRID No. 6137	⁶ Operator Name DEVON ENERGY PRODUCTION COMPANY, L.P.	
		⁸ Well Number 62H
		⁹ Elevation 3323.7

¹⁰ Surface Location

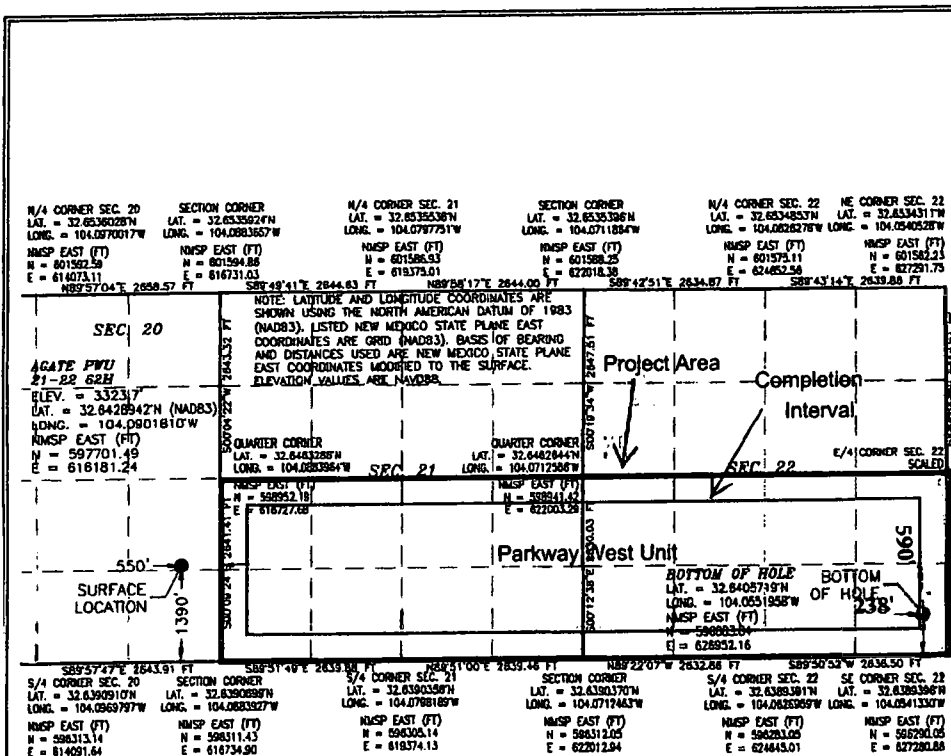
UL or lot no.	Section	Township	Range	Lot Idn	Feet from the	North/South line	Feet from the	East/West line	County
I	20	19 S	29 E		1390	SOUTH	550	EAST	EDDY

¹¹ Bottom Hole Location If Different From Surface

UL or lot no.	Section	Township	Range	Lot Idn	Feet from the	North/South line	Feet from the	East/West line	County
P	22	19 S	29 E		590	SOUTH	238	EAST	EDDY

¹² Dedicated Acres 320	¹³ Joint or Infill	¹⁴ Consolidation Code	¹⁵ Order No.
---------------------------------------------	-------------------------------	----------------------------------	-------------------------

No allowable will be assigned to this completion until all interests have been consolidated or a non-standard unit has been approved by the division.



17 OPERATOR CERTIFICATION

I hereby certify that the information contained herein is true and complete to the best of my knowledge and belief, and that this organization either owns a working interest or unleased mineral interest in the land including the proposed bottom hole location or has a right to drill this well at this location pursuant to a contract with an owner of such a mineral or working interest, or to a voluntary pooling agreement or a compulsory pooling order heretofore entered by the division.

Brittney Wheaton 03/15/18
Signature Date

Printed Name
Brittney Wheaton

E-mail Address
Brittney.wheaton@dmv.com

E-mail Address

18 SURVEYOR CERTIFICATION

I hereby certify that the well location shown on this plat was plotted from field notes of actual surveys made by me or under my supervision, and that the same is true and correct to the best of my belief.

MAY 16, 2017
Date of Survey

Simon F. Jaramillo
Signature and Seal of Professional Surveyor
Certificate Number **12797**
SURVEY NO. 5211A