

Submit 1 Copy To Appropriate District Office

District I - (575) 393-6161
1625 N. French Dr., Hobbs, NM 88240
District II - (575) 748-1283
811 S. First St., Artesia, NM 88210
District III - (505) 334-6178
1000 Rio Brazos Rd., Aztec, NM 87410
District IV - (505) 476-3460
1220 S. St. Francis Dr., Santa Fe, NM 87505

State of New Mexico
Energy, Minerals and Natural Resources

OIL CONSERVATION DIVISION
1220 South St. Francis Dr.
Santa Fe, NM 87505

Form C-103
Revised July 18, 2013

SUNDRY NOTICES AND REPORTS ON WELLS (DO NOT USE THIS FORM FOR PROPOSALS TO DRILL OR TO DEEPEN OR PLUG BACK TO A DIFFERENT RESERVOIR. USE "APPLICATION FOR PERMIT" (FORM C-101) FOR SUCH PROPOSALS.)		WELL API NO. 30-015-28669
1. Type of Well: Oil Well <input checked="" type="checkbox"/> Gas Well <input type="checkbox"/> Other <input type="checkbox"/>		5. Indicate Type of Lease STATE <input type="checkbox"/> FEE <input checked="" type="checkbox"/>
2. Name of Operator EOG Resources, Inc.		6. State Oil & Gas Lease No.
3. Address of Operator 104 South Fourth Street, Artesia, NM 88210		7. Lease Name or Unit Agreement Name Binger AKU
4. Well Location Unit Letter <u>G</u> : <u>1980</u> feet from the <u>North</u> line and <u>1980</u> feet from the <u>East</u> line Section <u>29</u> Township <u>19S</u> Range <u>25E</u> NMPM <u>Eddy</u> County		8. Well Number <u>2</u>
11. Elevation (Show whether DR, RKB, RT, GR, etc.) 3518'GR		9. OGRID Number 7377
		10. Pool name or Wildcat Wildcat; Bone Spring

12. Check Appropriate Box to Indicate Nature of Notice, Report or Other Data

NOTICE OF INTENTION TO:

PERFORM REMEDIAL WORK ☐ PLUG AND ABANDON ☒
TEMPORARILY ABANDON ☐ CHANGE PLANS ☐
PULL OR ALTER CASING ☐ MULTIPLE COMPL ☐
DOWNHOLE COMMINGLE ☐
CLOSED-LOOP SYSTEM ☐
OTHER: ☐

SUBSEQUENT REPORT OF:

REMEDIAL WORK ☐ ALTERING CASING ☐
COMMENCE DRILLING OPNS. ☐ P AND A ☐
CASING/CEMENT JOB ☐
OTHER: ☐

13. Describe proposed or completed operations. (Clearly state all pertinent details, and give pertinent dates, including estimated date of starting any proposed work). SEE RULE 19.15.7.14 NMAC. For Multiple Completions: Attach wellbore diagram of proposed completion or recompletion.

EOG Resources, Inc. plans to plug and abandon this well as follows:

1. MIRU all safety equipment as needed. POOH with production equipment.
2. RIH with GR/JB to 5420'.
3. Set a CIBP at 5370' with 35' Class "C" cement on top.
4. Spot a 25 sx Class "C" cement plug from 3662'-3804'. This will plug the Bone Spring.
5. Spot a 25 sx Class "C" cement plug from 2132'-2274'. This will plug the Glorieta.
6. Perforate at 1200'. Attempt to establish circulation.
7. Spot a 25 sx Class "C" cement plug from 1058'-1290'. This will plug 9-5/8" casing shoe. *1250' P does not Circ.*
8. Spot a 25 sx Class "C" cement plug from 613'-755'. This will plug the San Andres.
9. Spot a 10 sx Class "C" cement plug from 52' up to surface. *Perf @ 100' + Attempt to Circ. to Surf.*
10. Top off, cut off wellhead and weld on dry hole marker. Clean location as per regulated.

Wellbore schematics attached

Spud Date:

Rig Release Date:

I hereby certify that the information above is true and complete to the best of my knowledge and belief.

SIGNATURE Tina Huerta TITLE Regulatory Specialist DATE February 26, 2019

Type or print name Tina Huerta E-mail address: tina.huerta@eogresources.com PHONE: 575-748-4168

For State Use Only

APPROVED BY: [Signature] TITLE State Mgr DATE 2/28/19
Conditions of Approval (if any):

ENTERED
EX 3-1-19

BINGER AKU #2

11/6/2018

COMMENTS

Perforations 5420-5482

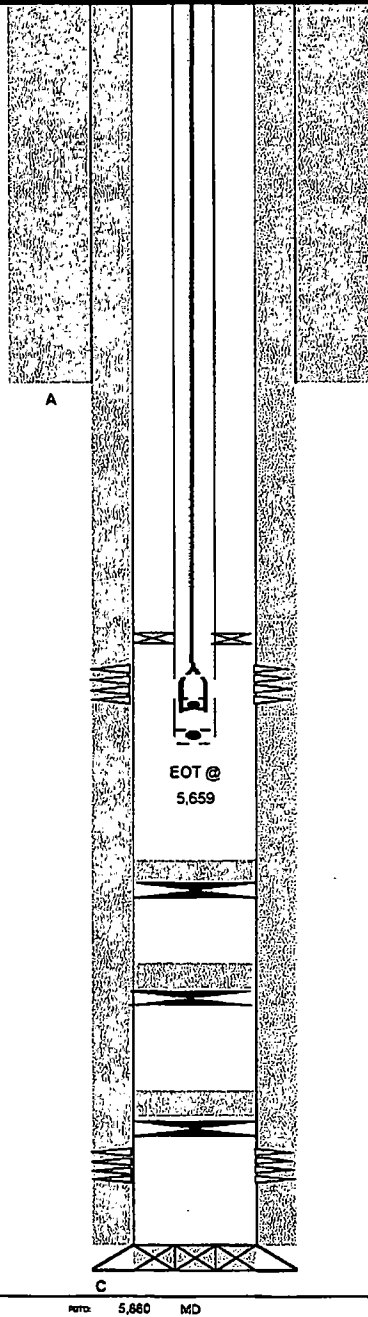
rat hole 378

CIBP 5860' with 35' cmt

CIBP 7480' with 35' cmt

CIBP 7520' c 35' cmt

Perforations 7686 - 7792



Tubing

#	Joints	Description	Length	OD	in	Grade	Wt (lb/ft)	Top (ft/B)	Btn (ft/B)
			FT		in				
1	165	Tubing	5362.50	2 7/8	2.441	J-55	6.4	-5.00	5,357.50
2	1	Tubing Anchor/catcher	3.00	7				5,357.50	5,360.50
3	6	Tubing	195.00	2 7/8	2.441	J-55	6.4	5,360.50	5,555.50
4	1	Seating Nipple	1.00	2 7/8				5,555.50	5,556.50
5	1	Slotted Sub	4.00	2 7/8				5,556.50	5,560.50
6	3	Tubing	97.50	2 7/8	2.441	J-55	6.4	5,560.50	5,658.00
7	1	Bull Plug	1.00	2 7/8				5,658.00	5,659.00

Rods

	JTS	Item Desc	Length	OD	Grade	Top	Btn	Cum Length
1	1	Rod Sub	4.00	1		-7.00	-3.00	
2	1	Rod Sub	6.00	1		-3.00	3.00	
3	1	Rod Sub	8.00	1		3.00	11.00	
4	69	Sucker Rods - Norris	1725.00	1	N-80	11.00	1736.00	
5	73	Sucker Rods - Norris	1825.00	7/8	N-80	1736.00	3561.00	
6	69	Sucker Rods - Norris	1725.00	3/4	N-80	3561.00	5286.00	
7	10	Sucker Rods - Norris	250.00	1	N-80	5286.00	5536.00	
8	1	25-200-RHBC - 24- 4	24.00	2		5536.00	5560.00	

CASING DETAIL

#	SIZE	WGHT	GRADE	THREAD	Top	Bottom			
A	9 5/8				0	1,155			
B	7				0	8,340			
C									

PRESSURE DATA

BOTTOM HOLE PRESSURE	1042 PSI
Calculated using HASP + (0.1 * Top Perf)	
HIGHEST ANTICIPATED PRESSURE	600 PSI
SICP + 500 PSI Safety Factor	
MAXIMUM ALLOWABLE SURFACE PRESS	3000 PSI
Rating of WH	
BOTTOM HOLE TEMPERATURE	90 F

Prepared by: MJM

BINGER AKU #2

11/6/2018

COMMENTS

Plug #6

Plug #5

Plug #4

Plug #3

Plug #2

Plug #1

Perforations 5420-5482

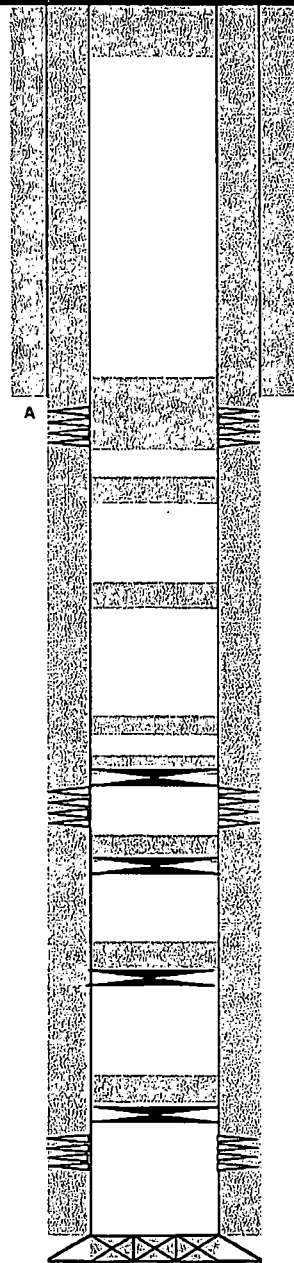
CIBP 5860' with 35' cmt

DV 6037

CIBP 7480' with 35' cmt

CIBP 7520' c 35' cmt

Perforations 7686 - 7792



C
5,860 MD
MD

CASING DETAIL

#	SIZE	WGHT	GRADE	THREAD	Top	Bottom	CMT	Circ
A	9 5/8	36	J-55		0	1,150	1100	197 sxs
B	7	28	N-80		0	8,340	1450	150 sxs
C								

Formation	Top
San Anders	705.00
Glorieta	2224.00
Bone Spring	3754.00
Wolfcamp	5485.00
Canyon	7661.00

PLUG DETAIL

#	DESCRIPTION
1	Set CIBP at 5370 ft with 35 ft of CLS C on top.
2	Spot a 25 SX (142 ft) CLS C cement plug 3662 ft - 3804 ft. This will plug the Bone Spring.
3	Spot a 25 SX (142 ft) CLS C cement plug 2132 ft - 2274 ft. This will plug the Glorieta.
4	Perforate at 1200 ft. Attempt to establish Circulation. Spot a 25 SX (142 ft) CLS C cement plug 1058 ft - 1200 ft. This will plug the 8.625 inch casing shoe.
5	Spot a 25 SX (142 ft) CLS C cement plug 613 ft - 755 ft. This will plug the San Anders.
6	Spot a 10 SX (57 ft) CLS C cement plug 0 ft - 57 ft. This will plug the Top.

Prepared by: MJM

Date: 25-Feb-2019

CONDITIONS FOR PLUGGING AND ABANDONMENT

District II / Artesia N.M.

The following is a guide or checklist in preparation of a plugging program, this is not all inclusive and care must be exercised in establishing special plugging programs in unique and unusual cases, **Notify NMOCD District Office II at (575)-748-1283 at least 24 hours before beginning work.**

1. A notice of intent to plug and abandon a wellbore is required to be approved before plugging operations are conducted. A cement evaluation tool is required in order to ensure isolation of producing formations, protection of water and correlative rights. A cement bond log or other accepted cement evaluation tool is to be provided to the division for evaluation if one has not been previously run or if the well did not have cement circulated to surface during the original casing cementing job or subsequent cementing jobs.
2. Closed loop system is to be used for entire plugging operation. Upon completion, contents of steel pits are to be hauled to a permitted disposal location.
3. Trucking companies being used to haul oilfield waste fluids to a disposal – commercial or private – shall have an approved NMOCD C-133 permit. A copy of this permit shall be available in each truck used to haul waste products. It is the responsibility of the operator as well as the contractor, to verify that this permit is in place prior to performing work. Drivers shall be able to produce a copy upon request of an NMOCD Field inspector.
4. Filing a subsequent C-103 will serve as notification that the well has been plugged.
5. A final C-103 shall be filed (and a site inspection by NMOCD Inspector to determine if the location is satisfactorily cleaned, all equipment, electric poles and trash has been removed to Meet NMOCD standards) before bonding can be released.
6. If the well is not plugged within 1
7. If work has not begun within 1 Year of the approval of this procedure, an extension request must be file stating the reason the well has not been plugged.
8. **Squeeze pressures are not to exceed 500 psi, unless approval is given by NMOCD.**
9. Produced water **will not** be used during any part of the plugging operation.
10. Mud laden fluids must be placed between all cement plugs mixed at 25 sacks per 100 bbls of water.
11. All cement plugs will be a minimum of 100' in length or a minimum of 25 sacks of cement, whichever is greater. 50' of calculated cement excess required for inside casing plugs and 100% calculated cement excess required on outside casing plugs.
12. **Class 'C' cement will be used above 7500 feet.**
13. **Class 'H' cement will be used below 7500 feet.**
14. **A cement plug is required to be set 50' above and 50' below, casing stubs, DV tools, attempted casing cut offs, cement tops outside casing, salt sections and anywhere the casing is perforated, these plugs require a 4 hour WOC and then will be tagged**
15. **All Casing Shoes Will Be Perforated 50' below shoe depth and Attempted to be Squeezed, cement needs to be 50' above and 50' Below Casing Shoe inside the Production Casing**

16. When setting the top out cement plug in production, intermediate and surface casing, wellbores should remain full at least 30 minutes after plugs are set
17. **A CIBP is to be set within 100' of production perforations, capped with 100' of cement, WOC 4 hours and tag.**
18. A CIBP with 35' of cement may be used in lieu of the 100' plug if set with a bailer. This plug will be placed within 100' of the top perforation, **(WOC 4 hrs and tag).**
19. **No more than 3000' is allowed between cement plugs in cased hole and 2000' in open hole.**
20. Some of the Formations to be isolated with cement plugs are: These plugs to be set to isolate formation tops
 - A) Fusselman
 - B) Devonian
 - C) Morrow
 - D) Wolfcamp
 - E) Bone Springs
 - F) Delaware
 - G) Any salt sections
 - H) Abo
 - I) Glorieta
 - J) Yates.
 - K) **Potash---** (In the R-111-P Area (Potash Mine Area), a solid cement plug must be set across the salt section. Fluid used to mix the cement shall be saturated with the salts that are common to the section penetrated and in suitable proportions, not more than 3% calcium chloride (by weight of cement) will be considered the desired mixture whenever possible, **WOC 4 hours and tag, this plug will be 50' below the bottom and 50' above the top of the Formation.**
21. **If cement does not exist behind casing strings at recommended formation depths, the casing can be cut and pulled with plugs set at recommended depths. If casing is not pulled, perforations will be shot and cement squeezed behind casing, WOC and tagged. These plugs will be set 50' below formation bottom to 50' above formation top inside the casing**

DRY HOLE MARKER REQUIREMENTS

The operator shall mark the exact location of the plugged and abandoned well with a steel marker not less than four inches in diameter, 3' below ground level with a plate of at least ¼" welded to the top of the casing and the dry hole marker welded on the plate with the following information welded on the dry hole marker:

1. Operator name 2. Lease and Well Number 3.API Number 4. Unit Letter 5. Quarter Section (feet from the North, South, East or West) 6. Section, Township and Range 7. Plugging Date 8. County (SPECIAL CASES)-----AGRICULTURE OR PRARIE CHICKEN BREEDING AREAS

In these areas, a below ground marker is required with all pertinent information mentioned above on a plate, set 3' below ground level, a picture of the plate will be supplied to NMOCD for record, the exact location of the marker (longitude and latitude by GPS) will be provided to NMOCD (We typically require a current survey to verify the GPS)