

RECEIVED

APR 19 2019

Form C-102

District I
1625 N. French Dr., Hobbs, NM 88240
Phone: (575) 393-6161 Fax: (575) 393-0720
District II
811 S. First St., Artesia, NM 88210
Phone: (575) 748-1283 Fax: (575) 748-9720
District III
1000 Rio Brazos Road, Aztec, NM 87410
Phone: (505) 334-6178 Fax: (505) 334-6170
District IV
1220 S. St. Francis Dr., Santa Fe, NM 87505
Phone: (505) 476-3460 Fax: (505) 476-3462

State of New Mexico
Energy, Minerals & Natural Resources Department
OIL CONSERVATION DIVISION
1220 South St. Francis Dr.
Santa Fe, NM 87505

DISTRICT II-ARTESIA/CED

Revised August 1, 2011
Submit one copy to appropriate
District Office

AMENDED REPORT

WELL LOCATION AND ACREAGE DEDICATION PLAT ACTUAL AS-DRILLED PLAT

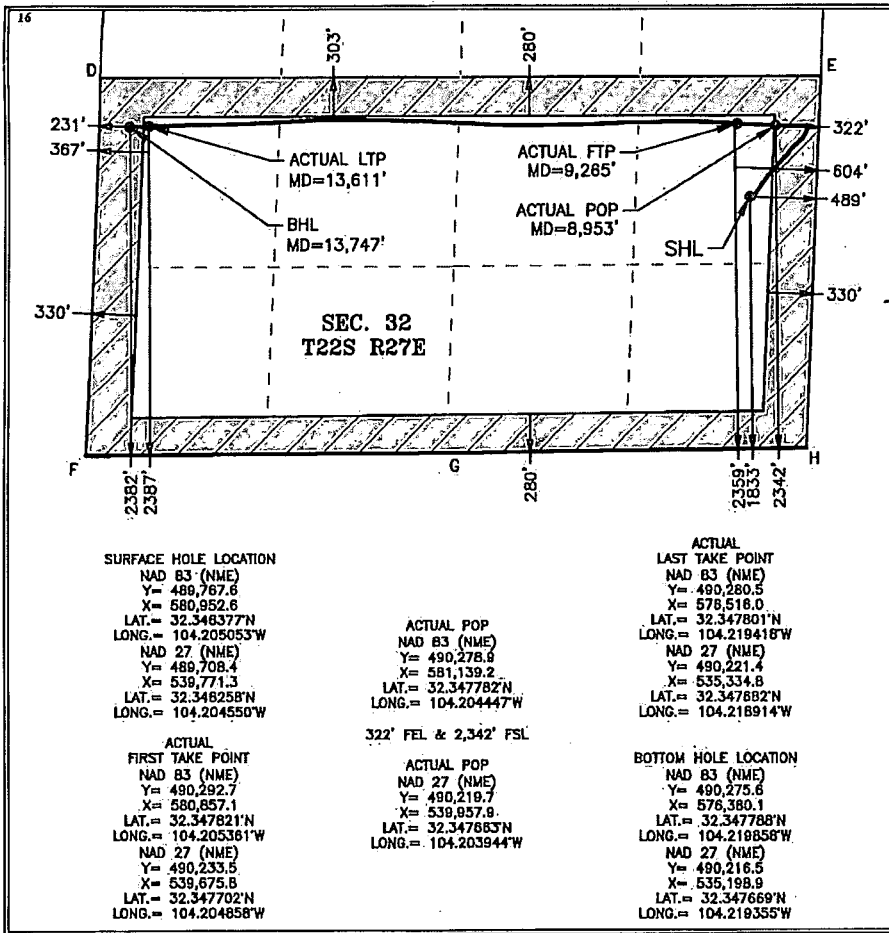
Table with 3 columns: API Number (30-015-45446), Pool Code (98220), Pool Name (PURPLE SAGE WOLFCAMP GAS POOL), Property Code (322881), Property Name (BOXER 32-22-27 FEE), Well Number (401H), OGRID No. (246289), Operator Name (WPX ENERGY PERMIAN, LLC), Elevation (3,153')

Table with 10 columns: UL or lot no. (I), Section (32), Township (22 S), Range (27 E), Lot Idn, Feet from the (1,833), North/South line (SOUTH), Feet from the (489), East/West line (EAST), County (EDDY)

Table with 10 columns: UL or lot no. (L), Section (32), Township (22 S), Range (27 E), Lot Idn, Feet from the (2,382), North/South line (SOUTH), Feet from the (231), East/West line (WEST), County (EDDY)

Table with 4 columns: Dedicated Acres (320 AC S/2), Joint or Infill, Consolidation Code, Order No.

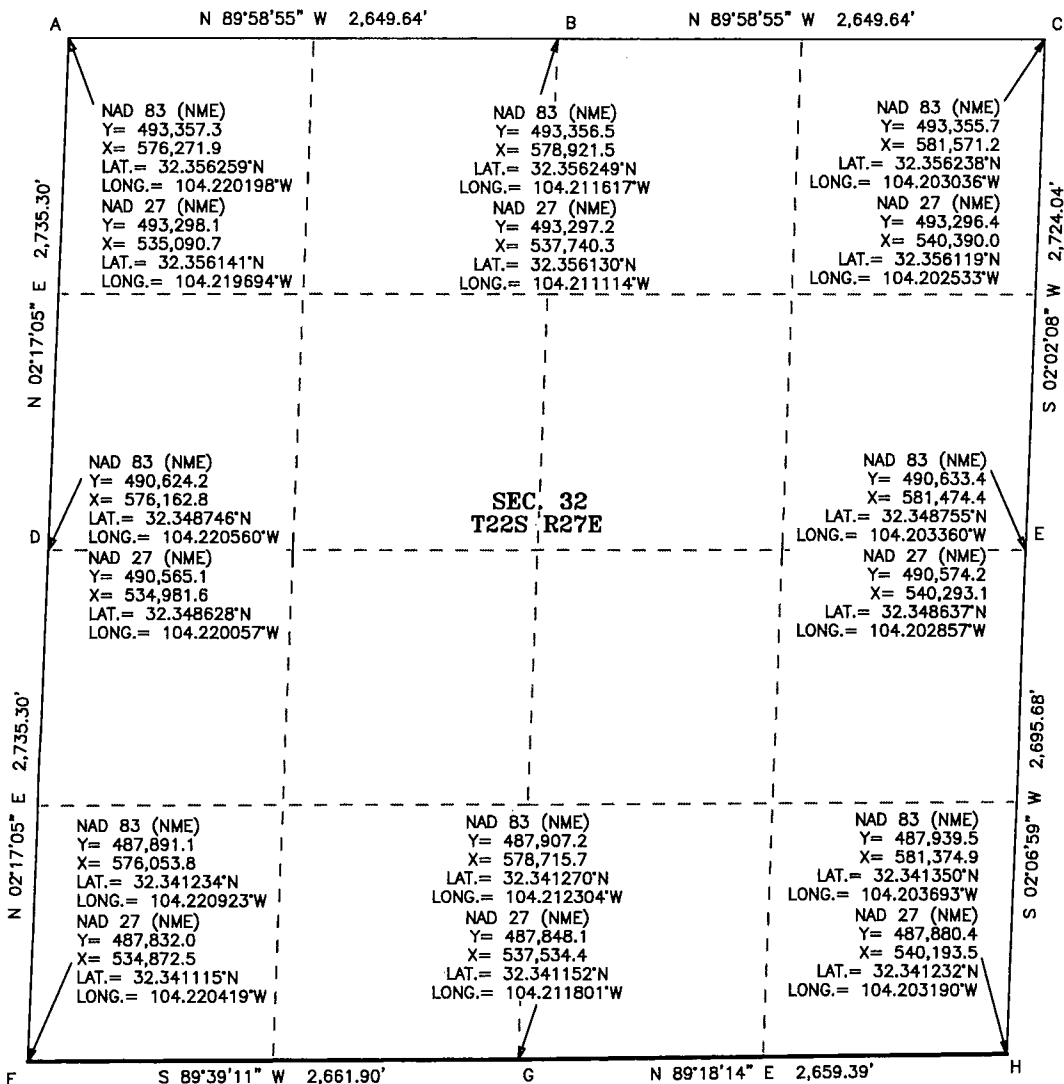
No allowable will be assigned to this completion until all interests have been consolidated or a non-standard unit has been approved by the division.



17 OPERATOR CERTIFICATION
I hereby certify that the information contained herein is true and complete to the best of my knowledge and belief, and that this organization either owns a working interest or unleased mineral interest in the land including the proposed bottom hole location or has a right to drill this well at this location pursuant to a contract with an owner of such a mineral or working interest, or to a voluntary pooling agreement or a compulsory pooling order heretofore entered by the division.
Signature: Dana Thompson, Date: 4/11/19
Printed Name: Dana Thompson
E-mail Address: dana.thompson@wpxenergy.com

18 SURVEYOR CERTIFICATION
I hereby certify that the well location shown on this plat was plotted from field notes of actual surveys made by me or under my supervision, and that the same is true and correct to the best of my belief.
Date of Survey: 04-11-2019
Signature and Seal of Professional Surveyor: Mark Dillon Harp
Professional Surveyor: MARK DILLON HARP, NEW MEXICO, 23786, PROFESSIONAL SURVEYOR
Certificate Number: JC/JAR/TM, 2018051181

# COORDINATES



BOXER 32-22-27 FEE 401H				
SHL	ACTUAL POP	ACTUAL FTP	ACTUAL LTP	BHL
489' FEL & 1,833' FSL	322' FEL & 2,342' FSL	604' FEL & 2,359' FSL	367' FWL & 2,387' FSL	231' FWL & 2,382' FSL
NAD 83 (NME) Y= 489,767.6 X= 580,952.6 LAT.= 32.346377°N LONG.= 104.205053°W	NAD 83 (NME) Y= 490,278.9 X= 581,139.2 LAT.= 32.347782°N LONG.= 104.204447°W	NAD 83 (NME) Y= 490,292.7 X= 580,857.1 LAT.= 32.347821°N LONG.= 104.205361°W	NAD 83 (NME) Y= 490,280.5 X= 576,516.0 LAT.= 32.347801°N LONG.= 104.219418°W	NAD 83 (NME) Y= 490,275.6 X= 576,380.1 LAT.= 32.347788°N LONG.= 104.219858°W
NAD 27 (NME) Y= 489,708.4 X= 539,771.3 LAT.= 32.346258°N LONG.= 104.204550°W	NAD 27 (NME) Y= 490,219.7 X= 539,957.9 LAT.= 32.347663°N LONG.= 104.203944°W	NAD 27 (NME) Y= 490,233.5 X= 539,675.8 LAT.= 32.347702°N LONG.= 104.204858°W	NAD 27 (NME) Y= 490,221.4 X= 535,334.8 LAT.= 32.347682°N LONG.= 104.218914°W	NAD 27 (NME) Y= 490,216.5 X= 535,198.9 LAT.= 32.347669°N LONG.= 104.219355°W



550 Bailey Ave., 205 - Fort Worth, TX 76107  
 Ph: 817.349.9800 - Fax: 979.732.5271  
 TBPE Firm 17957 | TBPLS Firm 10193887  
 www.fscinc.net

© COPYRIGHT 2016 - ALL RIGHTS RESERVED



0 500 1,000  
 1" = 1,000 FEET

SECTION 32, TOWNSHIP 22S, RANGE 27E, N.M.P.M.

COUNTY: EDDY STATE: N.M.

OPERATOR: WPX ENERGY PERMIAN, LLC

2018051181



Scientific Drilling International, Inc.  
325 Faudree Road  
Odessa, Texas 79765  
Tel: 432.689.5600 Fax: 432.563.6255  
www.scientificdrilling.com

State of New Mexico  
County of Eddy

I, Zhen Li, certify that; I am employed by Scientific Drilling International; that I did on the day(s) of 12/14/2018 through 12/30/2018 conduct or supervise the taking of a MWD survey from a depth of 141 feet to a depth of 13658 feet; that the data is true, correct, complete and within the limitations of the tool as set forth by Scientific Drilling International; that I am authorized and qualified to make this report; that this survey was conducted at the request of WPX Energy for the Boxer 32-22-27 Fee 401H Well, API# 30-015-45446 in Eddy County, New Mexico; and that I have reviewed this report and find that it conforms to the principals and procedures as set forth by Scientific Drilling International.

A handwritten signature in black ink, appearing to be "Zhen Li", is written over a horizontal line.

Field Technician