

District I
1625 N. French Dr., Hobbs, NM 88240
Phone: (575) 393-6161 Fax: (575) 393-0720
District II
811 S. First St., Artesia, NM 88210
Phone: (575) 748-1283 Fax: (575) 748-9720
District III
1000 Rio Brazos Road, Aztec, NM 87410
Phone: (505) 334-6178 Fax: (505) 334-6170
District IV
1220 S. St. Francis Dr., Santa Fe, NM 87505
Phone: (505) 476-3460 Fax: (505) 476-3462

State of New Mexico
Energy, Minerals & Natural Resources Department
OIL CONSERVATION DIVISION
1220 South St. Francis Dr.
Santa Fe, NM 87505

RECEIVED

Form C-102

Revised August 1, 2011

Submit one copy to appropriate

District Office

MAY 03 2019

DISTRICT II-ARTESIA O.C.D. AMENDED REPORT

WELL LOCATION AND ACREAGE DEDICATION PLAT AS-DRILLED PLAT

¹ API Number 30-015-43370	² Pool Code 40295	³ Pool Name LOS MEDANOS; BONE SPRING
⁴ Property Code 40141	⁵ Property Name JAMES RANCH UNIT DI 2	⁶ Well Number 192H
⁷ OGRID No. 260737	⁸ Operator Name XTO Permian Operating, LLC	⁹ Elevation 3,344'

¹⁰ Surface Location

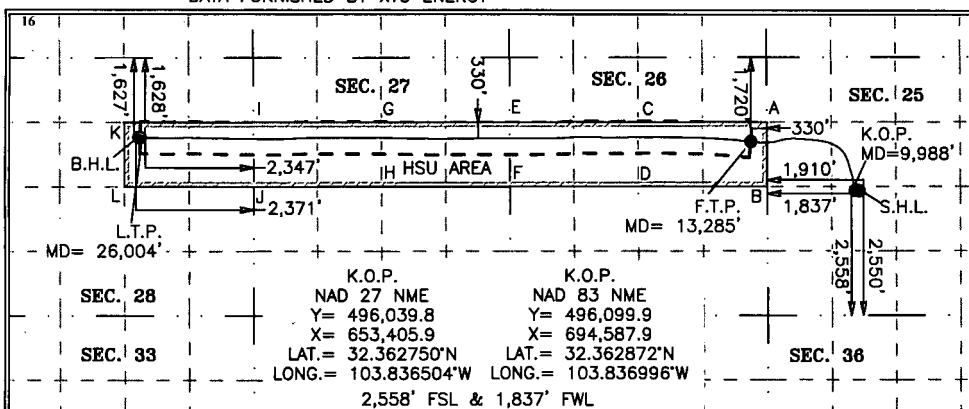
UL or lot no.	Section	Township	Range	Lot Idn	Feet from the	North/South line	Feet from the	East/West line	County
K	25	22 S	30 E		2,550	SOUTH	1,910	WEST	EDDY

¹¹ Bottom Hole Location If Different From Surface

UL or lot no.	Section	Township	Range	Lot Idn	Feet from the	North/South line	Feet from the	East/West line	County
G	28	22 S	30 E		1,627	NORTH	2,371	EAST	EDDY

¹² Dedicated Acres 400	¹³ Joint or Infill	¹⁴ Consolidation Code	¹⁵ Order No.
--------------------------------------	-------------------------------	----------------------------------	-------------------------

No allowable will be assigned to this completion until all interests have been consolidated or a non-standard unit has been approved by the division.
NOTE: AS-DRILLED BOTTOM HOLE PLOTTED FROM
DATA FURNISHED BY XTO ENERGY



¹⁷ OPERATOR CERTIFICATION

I hereby certify that the information contained herein is true and complete to the best of my knowledge and belief, and that this organization either owns a working interest or unleased mineral interest in the land including the proposed bottom hole location or has a right to drill this well at this location pursuant to a contract with an owner of such a mineral or working interest, or to a voluntary pooling agreement or a compulsory pooling order heretofore entered by the division.

Cheryl Rowell 04/12/2019
Signature Date

Cheryl Rowell
Printed Name

cheryl_rowell@xtoenergy.com
E-mail Address

¹⁸ SURVEYOR CERTIFICATION

I hereby certify that the well location shown on this plat was plotted from field notes of actual surveys made by me or under my supervision, and that the same is true and correct to the best of my belief.

4-12-2019

Date of Survey

Signature and Seal of
Professional Surveyor:

MARK DILLON IIARP 23786
Certificate Number



AI/JC

2017050666

SURFACE LOCATION
NAD 27 NME
Y= 496,032.5
X= 653,479.4
LAT.= 32.362729°N
LONG.= 103.836266°W

LAST TAKE POINT
NAD 27 NME
Y= 497,101.9
X= 638,513.4
LAT.= 32.365850°N
LONG.= 103.884720°W

SURFACE LOCATION
NAD 83 NME
Y= 496,092.6
X= 694,661.4
LAT.= 32.362851°N
LONG.= 103.836758°W

LAST TAKE POINT
NAD 83 NME
Y= 497,162.1
X= 679,695.3
LAT.= 32.365972°N
LONG.= 103.885213°W

FIRST TAKE POINT
NAD 27 NME
Y= 497,034.6
X= 651,222.9
LAT.= 32.365512°N
LONG.= 103.843559°W

BOTTOM HOLE LOCATION
NAD 27 NME
Y= 497,102.5
X= 638,489.4
LAT.= 32.365852°N
LONG.= 103.884798°W

FIRST TAKE POINT
NAD 83 NME
Y= 497,094.7
X= 692,404.9
LAT.= 32.365634°N
LONG.= 103.844051°W

BOTTOM HOLE LOCATION
NAD 83 NME
Y= 497,162.7
X= 679,671.3
LAT.= 32.365974°N
LONG.= 103.885291°W

CORNER COORDINATES TABLE
NAD 27 NME

A - Y= 497,435.0 N, X= 651,557.9 E
B - Y= 496,115.6 N, X= 651,568.6 E
C - Y= 497,429.2 N, X= 648,877.6 E
D - Y= 496,109.7 N, X= 648,885.9 E
E - Y= 497,424.0 N, X= 646,197.4 E
F - Y= 496,103.7 N, X= 646,203.2 E
G - Y= 497,418.1 N, X= 643,527.6 E
H - Y= 496,098.8 N, X= 643,532.8 E
I - Y= 497,413.5 N, X= 640,859.4 E
J - Y= 496,093.9 N, X= 640,863.0 E
K - Y= 497,409.3 N, X= 638,178.7 E
L - Y= 496,089.9 N, X= 638,184.4 E

CORNER COORDINATES TABLE
NAD 83 NME

A - Y= 497,495.1 N, X= 692,739.9 E
B - Y= 496,175.7 N, X= 692,750.6 E
C - Y= 497,489.4 N, X= 690,059.6 E
D - Y= 496,169.8 N, X= 690,067.9 E
E - Y= 497,484.2 N, X= 687,379.4 E
F - Y= 496,163.8 N, X= 687,385.2 E
G - Y= 497,478.3 N, X= 684,709.6 E
H - Y= 496,158.9 N, X= 684,714.8 E
I - Y= 497,473.7 N, X= 682,041.3 E
J - Y= 496,154.0 N, X= 682,045.0 E
K - Y= 497,469.5 N, X= 679,360.6 E
L - Y= 496,150.0 N, X= 679,366.4 E