

RECEIVED

APR 25 2019

District I  
1625 N. French Dr., Hobbs, NM 88240  
Phone: (575) 393-6161 Fax: (575) 393-0720

District II  
811 S. First St., Artesia, NM 88210  
Phone: (575) 748-1283 Fax: (575) 748-9720

District III  
1000 Rio Brazos Road, Aztec, NM 87410  
Phone: (505) 334-6178 Fax: (505) 334-6170

District IV  
1220 S. St. Francis Dr., Santa Fe, NM 87505  
Phone: (505) 476-3460 Fax: (505) 476-3462

State of New Mexico  
Energy, Minerals & Natural Resources Department  
OIL CONSERVATION DIVISION  
1220 South St. Francis Dr.  
Santa Fe, NM 87505

DISTRICT II-ARTESIA O.C.D. Form C-102  
Revised August 1, 2011  
Submit one copy to appropriate District Office

AMENDED REPORT

PRE-COMPLETION AS-DRILLED PLAT

WELL LOCATION AND ACREAGE DEDICATION PLAT

<sup>1</sup> API Number 30-015-45744		<sup>2</sup> Pool Code 98220		<sup>3</sup> Pool Name PURPLE SAGE WOLFCAMP GAS POOL	
<sup>4</sup> Property Code 325000		<sup>5</sup> Property Name SHEPHERD 3-2-23-27 FEE		<sup>6</sup> Well Number 401H	
<sup>7</sup> OGRID No. 264289		<sup>8</sup> Operator Name WPX ENERGY PERMIAN, LLC		<sup>9</sup> Elevation 3,112'	

<sup>10</sup> Surface Location

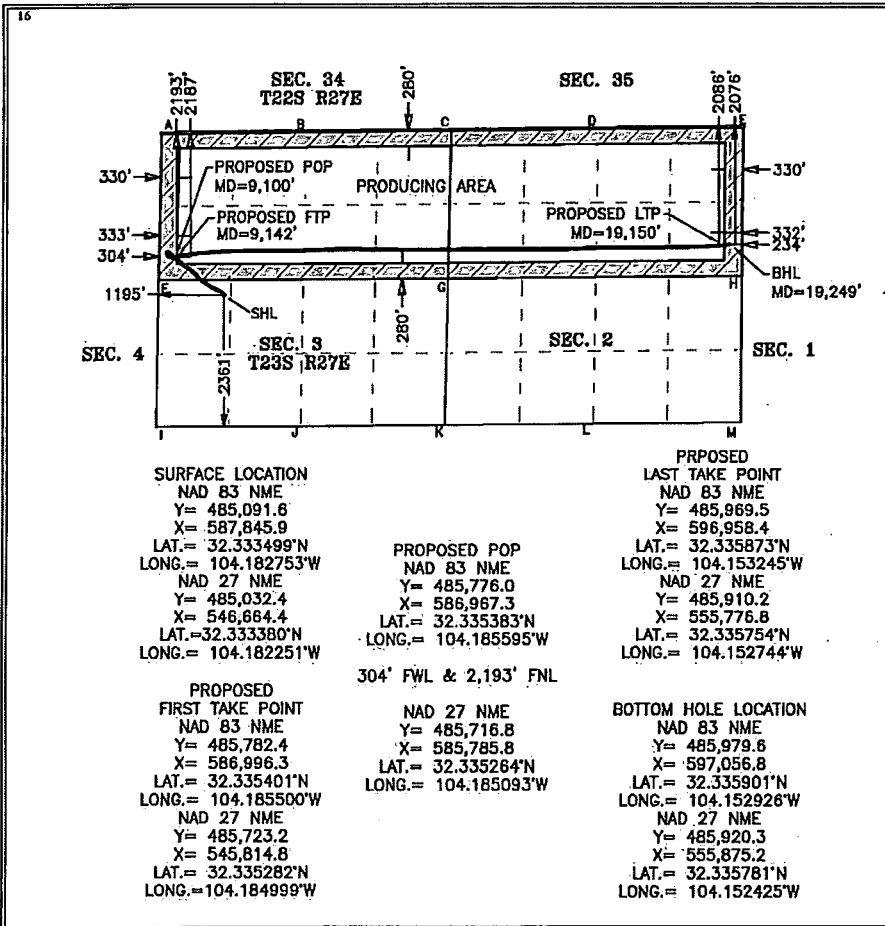
UL or lot no.	Section	Township	Range	Lot Idn	Feet from the	North/South line	Feet from the	East/West line	County
L	3	23 S	27 E		2,361	SOUTH	1,195	WEST	EDDY

<sup>11</sup> Bottom Hole Location If Different From Surface

UL or lot no.	Section	Township	Range	Lot Idn	Feet from the	North/South line	Feet from the	East/West line	County
H	2	23 S	27 E		2,076	NORTH	234	EAST	EDDY

<sup>12</sup> Dedicated Acres 638.4 AC N/2	<sup>13</sup> Joint or Infill	<sup>14</sup> Consolidation Code	<sup>15</sup> Order No.
---	-------------------------------	----------------------------------	-------------------------

No allowable will be assigned to this completion until all interests have been consolidated or a non-standard unit has been approved by the division.



**17 OPERATOR CERTIFICATION**  
I hereby certify that the information contained herein is true and complete to the best of my knowledge and belief, and that this organization either owns a working interest or unleased mineral interest in the land including the proposed bottom hole location or has a right to drill this well at this location pursuant to a contract with an owner of such a mineral or working interest, or to a voluntary pooling agreement or a compulsory pooling order heretofore entered by the division.

*Dana Thompson* 04/17/2019  
Signature Date

Dana Thompson  
Printed Name

dana.thompson@wpxenergy.com  
E-mail Address

**18 SURVEYOR CERTIFICATION**  
I hereby certify that the well location shown on this plat was plotted from field notes of actual surveys made by me or under my supervision, and that the same is true and correct to the best of my belief.

04-17-2019  
Date of Survey

Signature and Seal of Professional Surveyor:

*Mark Dillon Harp*  
MARK DILLON HARP 23786  
Certificate Number

TM 2018041045

# COORDINATES

NAD 83 (NME)  
Y= 487,966.5  
X= 586,700.2  
LAT.= 32.341406°N  
LONG.= 104.186450°W  
NAD 27 (NME)  
Y= 482,666.4  
X= 545,429.7  
LAT.= 32.326880°N  
LONG.= 104.186259°W

NAD 83 (NME)  
Y= 488,013.7  
X= 592,002.4  
LAT.= 32.341514°N  
LONG.= 104.169281°W  
NAD 27 (NME)  
Y= 482,677.5  
X= 548,071.7  
LAT.= 32.326900°N  
LONG.= 104.177706°W

NAD 83 (NME)  
Y= 488,058.2  
X= 597,307.7  
LAT.= 32.341613°N  
LONG.= 104.152102°W  
NAD 27 (NME)  
Y= 482,688.6  
X= 550,713.1  
LAT.= 32.326920°N  
LONG.= 104.169155°W

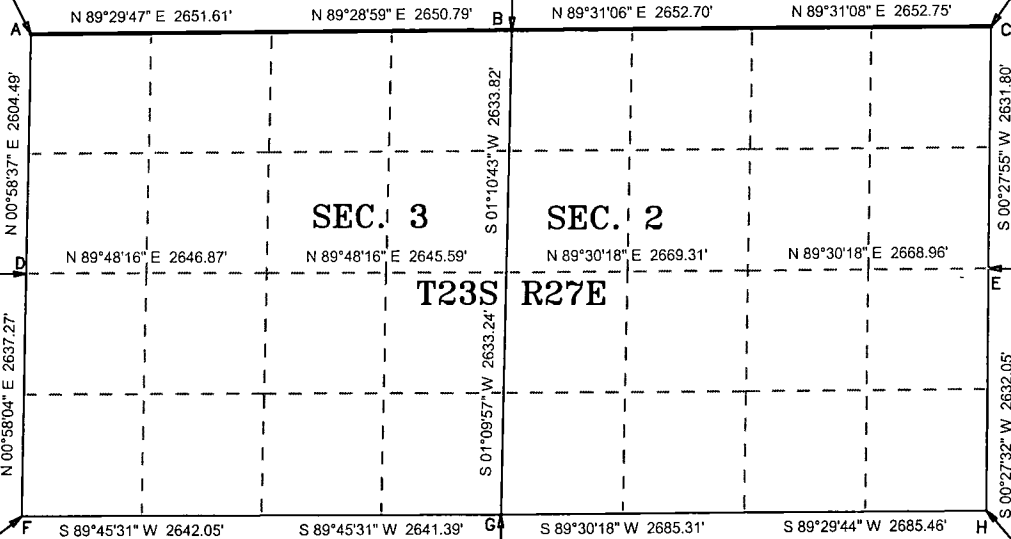
NAD 83 (NME)  
Y= 485,362.3  
X= 586,655.8  
LAT.= 32.334247°N  
LONG.= 104.186605°W  
NAD 27 (NME)  
Y= 480,046.9  
X= 545,477.7  
LAT.= 32.319679°N  
LONG.= 104.186116°W

NAD 83 (NME)  
Y= 485,426.5  
X= 597,286.3  
LAT.= 32.334379°N  
LONG.= 104.152186°W  
NAD 27 (NME)  
Y= 480,079.5  
X= 550,744.1  
LAT.= 32.319748°N  
LONG.= 104.169067°W

NAD 83 (NME)  
Y= 482,725.4  
X= 586,811.3  
LAT.= 32.326999°N  
LONG.= 104.186761°W  
NAD 27 (NME)  
Y= 477,427.5  
X= 545,525.7  
LAT.= 32.312478°N  
LONG.= 104.185972°W

NAD 83 (NME)  
Y= 482,747.7  
X= 591,894.7  
LAT.= 32.327039°N  
LONG.= 104.169656°W  
NAD 27 (NME)  
Y= 477,429.9  
X= 548,151.2  
LAT.= 32.312475°N  
LONG.= 104.177473°W

NAD 83 (NME)  
Y= 482,794.6  
X= 597,265.2  
LAT.= 32.327144°N  
LONG.= 104.152269°W  
NAD 27 (NME)  
Y= 477,431.5  
X= 550,782.0  
LAT.= 32.312468°N  
LONG.= 104.168958°W



SHEPHERD 3-2-23-27 FEE 401H				
SHL	PROPOSED POP	PROPOSED FTP	PROPOSED LTP	BHL
1,195' FWL & 2,361' FSL	304' FWL & 2,193' FNL	333' FWL & 2,187' FNL	332' FEL & 2,086' FNL	234' FEL & 2,076' FNL
NAD 83 NME	NAD 83 NME	NAD 83 NME	NAD 83 NME	NAD 83 NME
Y= 485,091.6	Y= 485,776.0	Y= 485,782.4	Y= 485,969.5	Y= 485,979.6
X= 587,845.9	X= 586,967.3	X= 586,996.3	X= 596,958.4	X= 597,056.8
LAT.= 32.333499°N	LAT.= 32.335383°N	LAT.= 32.335401°N	LAT.= 32.335873°N	LAT.= 32.335901°N
LONG.= 104.182753°W	LONG.= 104.185595°W	LONG.= 104.185500°W	LONG.= 104.153245°W	LONG.= 104.152926°W
NAD 27 NME	NAD 27 NME	NAD 27 NME	NAD 27 NME	NAD 27 NME
Y= 485,032.4	Y= 485,716.8	Y= 485,723.2	Y= 485,910.2	Y= 485,920.3
X= 546,664.4	X= 585,785.8	X= 545,814.8	X= 555,776.8	X= 555,875.2
LAT.= 32.333380°N	LAT.= 32.335264°N	LAT.= 32.335282°N	LAT.= 32.335754°N	LAT.= 32.335781°N
LONG.= 104.182251°W	LONG.= 104.185093°W	LONG.= 104.184999°W	LONG.= 104.152744°W	LONG.= 104.152425°W

**FSC INC**  
SURVEYORS+ENGINEERS  
550 Bailey Ave., 205 - Fort Worth, TX 76107  
Ph: 817.349.9800 - Fax: 979.732.5271  
TBPE Firm #179574 - TBPE Firm #0193887  
www.fscinc.net



0 1,000 2,000  
1" = 2,000 FEET

SECTION 3 AND 2, TOWNSHIP 23S, RANGE 27E, N.M.P.M.

COUNTY: EDDY STATE: N.M.

OPERATOR: WPX ENERGY PERMIAN, LLC

2018041045



Scientific Drilling International, Inc.  
325 Faudree Road  
Odessa, Texas 79765  
Tel: 432.689.5600 Fax: 432.563.6255  
www.scientificdrilling.com

State of New Mexico  
County of Eddy

I, Jeremy Rounsavall, certify that; I am employed by Scientific Drilling International; that I did on the day(s) of 03/11/2019 through 04/08/2019 conduct or supervise the taking of a MWD survey from a depth of 179 feet to a depth of 19176 feet; that the data is true, correct, complete and within the limitations of the tool as set forth by Scientific Drilling International; that I am authorized and qualified to make this report; that this survey was conducted at the request of WPX Energy for the Shepherd 3-2-23-27 Fee 401H Well, API# 30-015-45744 in Eddy County, New Mexico; and that I have reviewed this report and find that it conforms to the principals and procedures as set forth by Scientific Drilling International.

  
\_\_\_\_\_  
Field Technician