

UNITED STATES
DEPARTMENT OF THE INTERIOR
BUREAU OF LAND MANAGEMENT

Oil Cons.
N.M. DIV-Dist. 2
1301 W. Grand Avenue
Artesia, NM 88210

FORM APPROVED
OMB No. 1004-0135
Expires: January 31, 2004

SUNDRY NOTICES AND REPORTS ON WELLS
Do not use this form for proposals to drill or to re-enter an abandoned well. Use Form 3160-3 (APD) for such proposals.

5. Lease Serial No.
NM-24160-90807
6. If Indian, Allottee or Tribe Name
7. If Unit or CA/Agreement, Name and/or No.
8. Well Name and No.
Osage Federal #17
9. API Well No.
30-015-26298
10. Field and Pool, or Exploratory Area
Parkway Bone Spring and Delaware
11. County or Parish, State
Eddy, NM

SUBMIT IN TRIPLICATE - Other Instructions on reverse side

1. Type of Well
☒ Oil Well ☐ Gas Well ☐ Other
2. Name of Operator
St. Mary Land & Exploration Company c/o Nance Petroleum Corporation

3a. Address
P.O. Box 7168, Billings, MT 59103

3b. Phone No. (include area code)
(406) 243-6248

4. Location of Well (Footage, Sec., T. R., M., or Survey Description)
2310' FSL & 2310' FWL, NE1/4SW1/4, Unit Letter K
Sec. 34, T19S, R29E, NMPM

12. CHECK APPROPRIATE BOX(ES) TO INDICATE NATURE OF NOTICE, REPORT, OR OTHER DATA

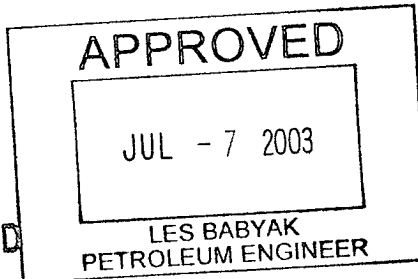
TYPE OF SUBMISSION	TYPE OF ACTION			
<input checked="" type="checkbox"/> Notice of Intent	<input type="checkbox"/> Acidize	<input type="checkbox"/> Deepen	<input type="checkbox"/> Production (Start/Resume)	<input type="checkbox"/> Water Shut-Off
<input type="checkbox"/> Subsequent Report	<input type="checkbox"/> Alter Casing	<input type="checkbox"/> Fracture Treat	<input type="checkbox"/> Reclamation	<input type="checkbox"/> Well Integrity
<input type="checkbox"/> Final Abandonment Notice	<input type="checkbox"/> Casing Repair	<input type="checkbox"/> New Construction	<input type="checkbox"/> Recomplete	<input type="checkbox"/> Other
	<input type="checkbox"/> Change Plans	<input checked="" type="checkbox"/> Plug and Abandon	<input type="checkbox"/> Temporarily Abandon	
	<input type="checkbox"/> Convert to Injection	<input type="checkbox"/> Plug Back	<input type="checkbox"/> Water Disposal	

3. Describe Proposed or Completed Operation (clearly state all pertinent details, including estimated starting date of any proposed work and approximate duration thereof. If the proposal is to deepen directionally or recompleat horizontally, give subsurface locations and measured and true vertical depths of all pertinent markers and zones. Attach the Bond under which the work will be performed or provide the Bond No. on file with BLM/BIA. Required subsequent reports shall be filed within 30 days following completion of the involved operations. If the operation results in a multiple completion or recompleat in a new interval, a Form 3160-4 shall be filed once testing has been completed. Final Abandonment Notices shall be filed only after all requirements, including reclamation, have been completed, and the operator has determined that the site is ready for final inspection.)

Please see attached procedure and wellbore diagrams to plug and abandon the Osage Federal #17 well in Eddy County, NM.

We propose to begin the work approximately August 1, 2003.

APPROVAL SUBJECT TO
GENERAL REQUIREMENTS AND
SPECIAL STIPULATIONS ATTACHED



2003 JUN 30 PM 2 08
BUREAU OF LAND MGMT.
CARLSBAD FIELD OFFICE
RECEIVED

14. I hereby certify that the foregoing is true and correct.
Name (Printed/Typed) Mike Mungas Title Regulatory and Safety Engineer
Signature *Mike Mungas* Date June 25, 2003

THIS SPACE FOR FEDERAL OR STATE OFFICE USE

Approved by (Signature) _____ Name (Printed/Typed) _____ Title _____
Office _____ Date _____
Conditions of approval, if any, are attached. Approval of this notice does not warrant or certify that the applicant holds legal or equitable title to those rights in the subject lease which would entitle the applicant to conduct operations thereon.

Title 18 U.S.C. Section 1001 and Title 43 U.S.C. Section 1212, make it a crime for any person knowingly and willfully to make to any department or agency of the United States any false, fictitious or fraudulent statements or representations as to any matter within its jurisdiction.

(Continued on next page)

**ST. MARY LAND & EXPLORATION COMPANY
C/O NANCE PETROLEUM CORPORATION**

**OSAGE FEDERAL #17
PARKWAY FIELD**

**NE SW SEC. 34, T19S, R29E
EDDY COUNTY, NEW MEXICO**

PERTINENT DATA:

Federal Lease:	NM-24160
API Number:	30-015-26298
Elevation:	3,308' GL, 3,321' KB
TD:	9,500' KB
PBTD:	8,127' KB
Perforations:	5,352' – 5,376.5' KB, 13 holes 6,974' – 6,990.5' KB, 12 holes
Surface Casing:	20", 94&133# @ 366' KB
Intermediate Casing:	13-3/8", 54.5# , J-55 @ 1,120' KB 8-5/8", 32&24#, J-55 @ 3,200' KB
Production Casing:	5-1/2", 17#, N-80 & J-55 @ 8,243' KB
Tubing:	2-7/8", 6.5#, J-55

WORK OBJECTIVE:

Plug and Abandon Well.

REQUIRED MATERIALS:

2-5-1/2" (17#) Cast-Iron Bridge Plugs

1-5-1/2"(17#) Cement Retainer

Approximately 280 sacks of Class "G" cement plus additives mixed at 15.8 ppg as per cement company recommendation

Approximately 190 bbls of 9.0 ppg mud

ABANDONMENT PROCEDURE:

1. Notify OCD office in Artesia at (505) 748-1283 when the P&A work is to start.
2. MIRUSDU and install BOP. Pick up tubing as required while round tripping a bit and 5-1/2"(17#) casing scraper to \pm 6900' KB.

3. RIH with a 5-1/2"(17#) cast iron bridge plug set it at $\pm 6,900'$ KB. Circulate hole with 35 bbls of 9.0 ppg mud up. Close pipe rams and pressure test casing and bridge plug to 300 psi for 15 minutes with OCD witness.
4. RU cementers and pump a balanced 50 foot cement plug on top of the bridge plug with 6 sacks of Class "G" cement mixed at 15.8 ppg. Displace tubing with ± 39.5 bbls 9.0 ppg mud to balance plug.
5. Pull up above plug and reverse circulate clean.
6. Pull up with tubing to $\pm 5,700'$. Mix and pump a balanced 100 foot cement plug from 5,700' to 5,600' (DV tool at 5,652') with 20 sacks of Class "G" cement mixed at 15.8 ppg. Displace tubing with ± 32.3 bbls of 9.0 ppg mud to balance plug.
7. Pull up above plug and reverse circulate clean. POOH.
8. RIH with a 5-1/2"(17#) cast iron bridge plug set it at $\pm 5,300'$ KB. Circulate hole with 120 bbls of 9.0 ppg mud up. Close pipe rams and pressure test casing and bridge plug to 300 psi for 15 minutes with OCD witness.
9. Pump a balanced 50 foot cement plug on top of the bridge plug with 6 sacks of Class "G" cement mixed at 15.8 ppg. Displace tubing with ± 30.3 bbls 9.0 ppg mud to balance plug.
10. Pull up above plug and reverse circulate clean.
11. Pull up with tubing to $\pm 3,250'$. Mix and pump a balanced 100 foot cement plug from 3,250' to 3,150' with 16 sacks of Class "G" cement mixed at 15.8 ppg. Displace tubing with ± 18.1 bbls of 9.0 ppg mud to balance plug.
12. Pull up above plug and reverse circulate clean. POOH.
13. RU wireline and perforate 4 squeeze holes at $\pm 1,170'$ KB. RD wireline.
14. RIH with a 5-1/2"(17#) cement retainer and set it at $\pm 1,155'$ KB. Open 8-5/8" intermediate casing valves. RU cementers and attempt to circulate through the squeeze holes and up the 8-5/8" intermediate casing. If circulation is established, pump 215 sacks of Class "G" cement mixed at 15.8 ppg to bring cement to surface in casing-casing annulus. If circulation was not established, squeeze the casing shoe perforations with 50 sacks of Class "G" cement. Unsting from cement retainer and circulate 10 sacks of cement to place an 85 foot plug on top of retainer. Displace tubing with ± 6.1 bbls of 9.0 ppg mud to balance plug.
15. Pull up above plug and reverse circulate clean. POOH laying down all but 50 feet of the remaining tubing. Spot a 50 foot surface cement plug with 6 sacks of Class "G" cement mixed at 15.8 ppg. Remove BOP and RDMOSU.

16. Dig out and cut off casing. Mark with steel marker not less than four inches (4") in diameter set in cement and extending at least four feet (4') above mean ground level. The following should be inscribed on the plate:

St. Mary Land & Exploration Company
Osage Federal #17
API No. 30-015-26298
Unit Letter K
Sec.34, T19S, R29E
Eddy, NM

17. Restore surface location and submit final plugging report as requested by the OCD.

WELLBORE DIAGRAM OSAGE FEDERAL # 17

LEASE: OSAGE

LOCATION: 2310' FSL & 2310' FWL

FIELD: PARKWAY BONE SPRING

STATUS: SHUT-IN

UL: K

WELL NO. 17

SEC: 34

T: 19S R: 29E

GL: 3308'

CT/ST: EDDY,NM

KB: 3321'

DF: 3320'

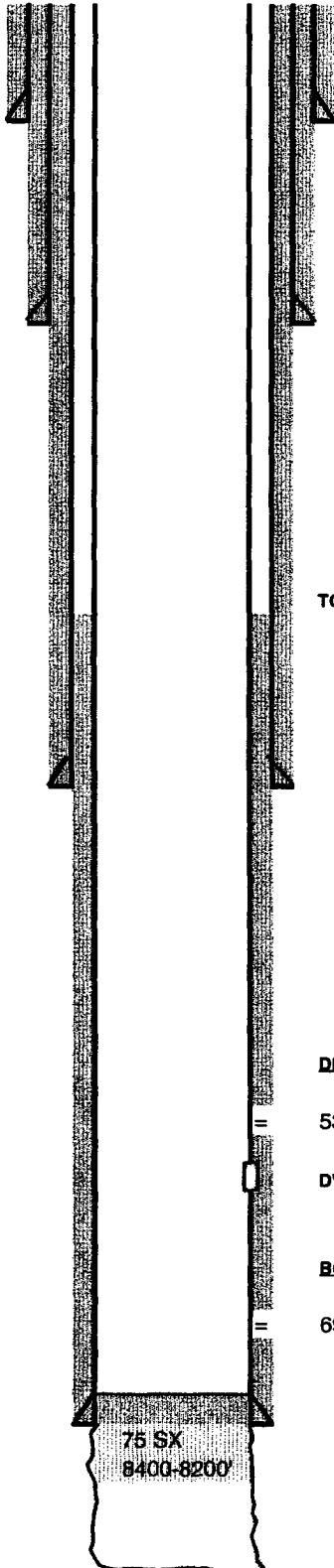
API # : 30-015-26298

SPUD: 11/12/90 (by SIETE)

COMP: 1/91

INITIAL FORM: BONE SPRING

CURRENT
WELLBORE



LC @ 61'

20" 94&133#

@ 366'

CIRC. W/ 800 SX

13 3/8" 54.5# J-55

@ 1120'

CIRC. W/ 750 SX

TOC @ 2820'

8 5/8" 32&24# J-55 @ 3200'

CMT'D W/ 1400 SX (TOC @ 1750')

1" TO SURF W/ 537 SX

DELAWARE PERFS (1 shot/1.5ft)

5352 - 5376.5' (13 holes)

DV @ 5652'

BONE SPRING PERFS (1 shot/1.5ft)

6974 - 6990.5' (12 holes)

5 1/2" 17# N-80, J-55 @ 8243'

1st Stage 520 sx Circ.

2nd Stage 470 sx

WELL HISTORY

12/20-21/90 CBL, Perf 6974-6990.5'
1000g 15%, - balled out w/24 BS's
Frac w/ 18,000g & 1700# 100 mesh
25,300# 20/40 sand & 10,860# 12/20 RCS
Avg 8 bpm @ 2000#

1/20/1991 IPP: 17 BO + 36 BW + 50 MCF

3/ 4-7/91 Perf Delaware 5352-5376.5'
2000g 15%, - balled out w/26 BS's
Frac w/ 16,000g & 1600# 100 mesh
24,000# 20/40 sand & 9,600# 12/20 RCS
Avg 8 bpm @ 2005#

3/11/1991 IPP: 11 BO + 36 BW + 20 MCF

Jun-91 Downhole commingling approved for
BS & Delaware

DATE: 11/02

PREPARED BY:

HRT

PBTD: 8127'

TD: 9500'

WELLBORE DIAGRAM OSAGE FEDERAL # 17

LEASE: OSAGE
LOCATION: 2310' FSL & 2310' FWL
FIELD: PARKWAY BONE SPRING
STATUS: SHUT-IN, TO BE P&A'D

UL: K

WELL NO. 17
SEC: 34 T: 19S R: 29E
GL: 3308' CT/ST: EDDY,NM
KB: 3321' DF: 3320'

API # : 30-015-26298
SPUD: 11/12/90 (by SIETE)
COMP: 1/91
INITIAL FORM: BONE SPRING

PROPOSED P&A
WELLBORE

85' (10 sk) cement plug on top
of CICR (TOC @ +/- 1070')
5-1/2" CICR @ +/- 1155'
4 squeeze holes @ 1170'
Attempt to circ cement to surface
inside 5-1/2" x 8-5/8" annulus

100' (16 sk) balanced cement plug
from 3,250'. Top of plug +/- 3150'

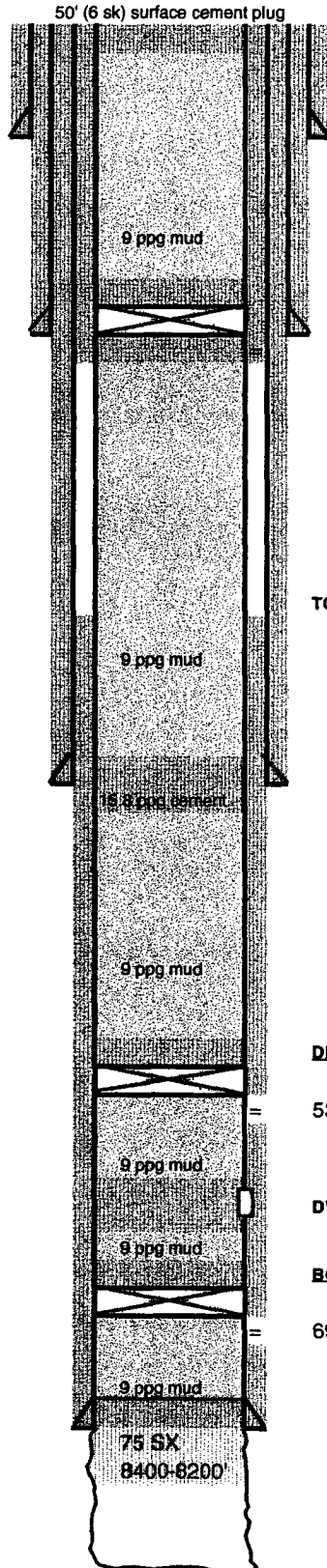
50 ft (6 sx) cement plug
Top of plug +/- 5250'
5-1/2" CIBP @ +/- 5300'

100 ft (20 sx) balanced cement plug
from 5700'. Top of plug +/- 5600'

50 ft (6 sx) cement plug
Top of plug +/- 6850'
5-1/2" CIBP @ +/- 6900'

DATE: 06/03
PREPARED BY:
HRT / MGM

PBTD: 8127'
TD: 9500'



LC @ 61'

20" 94&133#
@ 366'
CIRC. W/ 800 SX

13 3/8" 54.5# J-55
@ 1120'
CIRC. W/ 750 SX

TOC @ 2820'

8 5/8" 32&24# J-55 @ 3200'
CMT'D W/ 1400 SX (TOC @ 1750')
1" TO SURF W/ 537 SX

DELAWARE PERFS (1 shot/1.5ft)

5352 - 5376.5' (13 holes)

DV @ 5652'

BONE SPRING PERFS (1 shot/1.5ft)

6974 - 6990.5' (12 holes)

5 1/2" 17# N-80, J-55 @ 8243'
1st Stage 520 sx Circ.
2nd Stage 470 sx