

District I  
1625 N. French Dr., Hobbs, NM 88240  
Phone: (575) 393-6161 Fax: (575) 393-0720  
District II  
811 S. First St., Artesia, NM 88210  
Phone: (575) 748-1283 Fax: (575) 748-9720  
District III  
1000 Rio Brazos Road, Aztec, NM 87410  
Phone: (505) 334-6178 Fax: (505) 334-6170  
District IV  
1220 S. St. Francis Dr., Santa Fe, NM 87505  
Phone: (505) 476-3460 Fax: (505) 476-3462

State of New Mexico  
Energy, Minerals & Natural Resources Department  
OIL CONSERVATION DIVISION  
1220 South St. Francis Dr.  
Santa Fe, NM 87505

RECEIVED

JUN 21 2019  
DISTRICT II-ARTESIA O.C.D.

Form C-102  
Revised August 1, 2011  
Submit one copy to appropriate  
District Office  
 AMENDED REPORT

WELL LOCATION AND ACREAGE DEDICATION PLAT

<sup>1</sup> API Number <b>30-015-46129</b>	<sup>2</sup> Pool Code <b>39350</b>	<sup>3</sup> Pool Name <b>LIVINGSTON RIDGE; BONESPRING</b>
<sup>4</sup> Property Code <b>322967</b>	<sup>5</sup> Property Name <b>TOMB RAIDER 12-1 FED</b>	
<sup>7</sup> OGRID No. <b>6137</b>	<sup>6</sup> Operator Name <b>DEVON ENERGY PRODUCTION COMPANY, L.P.</b>	
		<sup>8</sup> Well Number <b>331H</b>
		<sup>9</sup> Elevation <b>3488.4</b>

" Surface Location

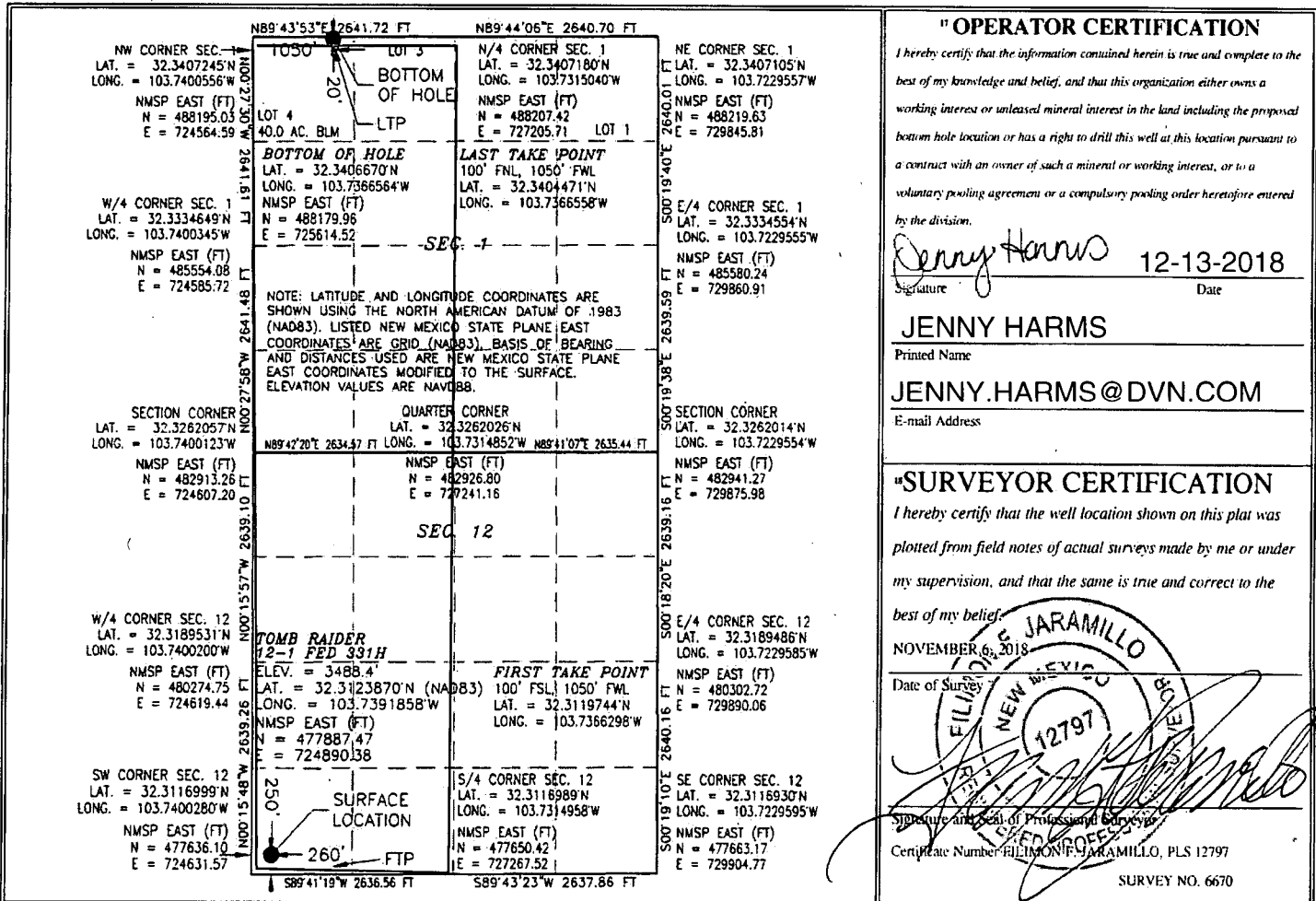
UL or lot no.	Section	Township	Range	Lot Idn	Feet from the	North/South line	Feet from the	East/West line	County
M	12	23 S	31 E		250	SOUTH	260	WEST	EDDY

" Bottom Hole Location If Different From Surface

UL or lot no.	Section	Township	Range	Lot Idn	Feet from the	North/South line	Feet from the	East/West line	County
4	1	23 S	31 E		20	NORTH	1050	WEST	EDDY

<sup>10</sup> Dedicated Acres <b>640</b>	<sup>11</sup> Joint or Infill	<sup>12</sup> Consolidation Code	<sup>13</sup> Order No.
---	-------------------------------	----------------------------------	-------------------------

No allowable will be assigned to this completion until all interests have been consolidated or a non-standard unit has been approved by the division.



Ref 6-26-19