

RECEIVED

FORM C-102

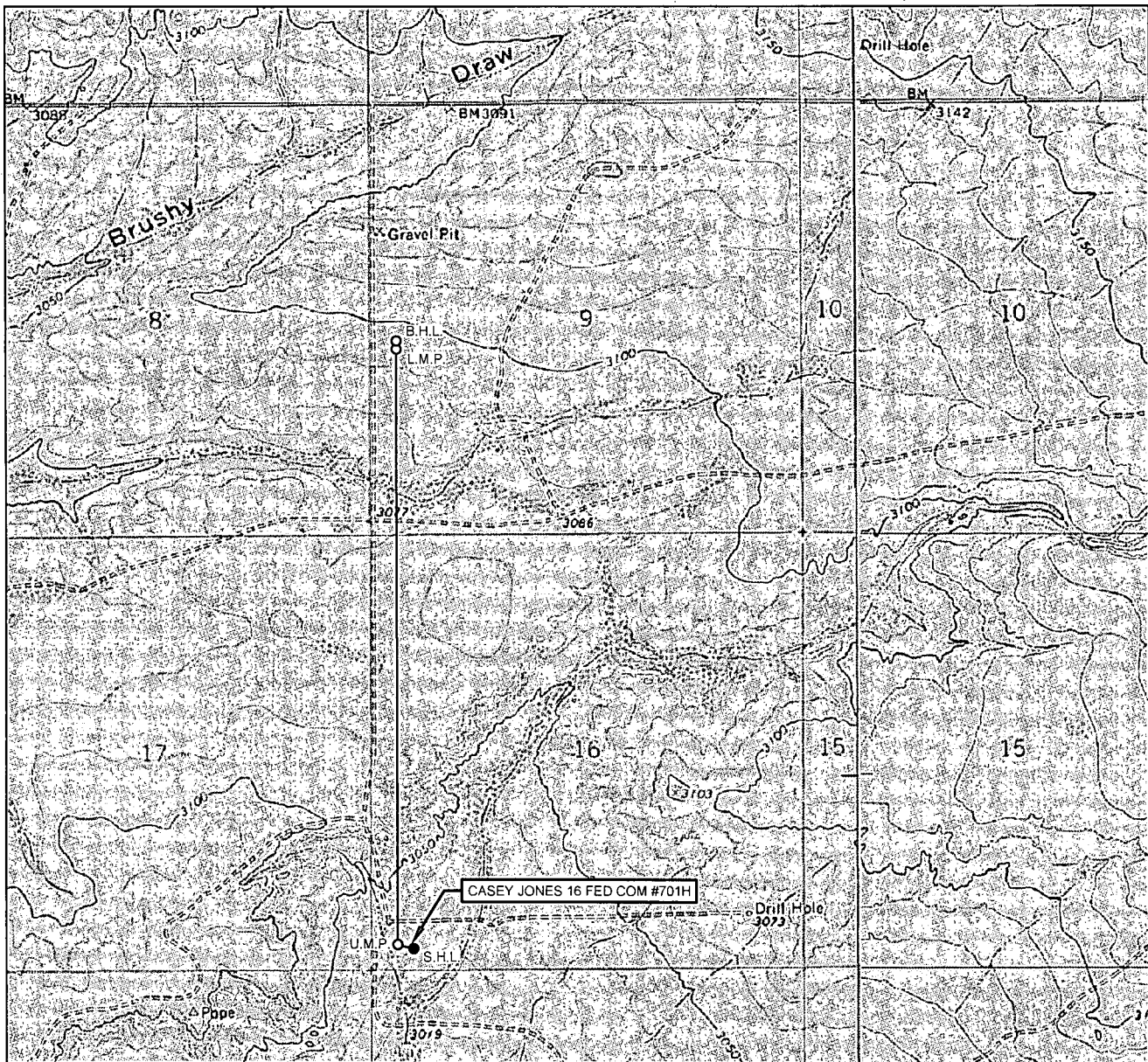
Revised August 1, 2011

Submit one copy to appropriate

District Office☐ AMENDED REPORT

RUP 8-23-19

LOCATION & ELEVATION VERIFICATION MAP



LEASE NAME & WELL NO.: CASEY JONES 16 FED COM #701H

SECTION 16 TWP 26-S RGE 30-E SURVEY N.M.P.M.
 COUNTY EDDY STATE NM ELEVATION 3033'
 DESCRIPTION 279' FSL & 524' FWL

LATITUDE N 32.0360285 LONGITUDE W 103.8932212



SCALE: 1" = 2000'
 0' 1000' 2000'

THIS EASEMENT/SERVITUDE LOCATION SHOWN HEREON HAS BEEN SURVEYED ON THE GROUND UNDER MY SUPERVISION AND PREPARED ACCORDING TO THE EVIDENCE FOUND AT THE TIME OF SURVEY, AND DATA PROVIDED BY EOG RESOURCES, INC. THIS CERTIFICATION IS MADE AND LIMITED TO THOSE PERSONS OR ENTITIES SHOWN ON THE FACE OF THIS PLAT AND IS NON-TRANSFERABLE. THIS SURVEY IS CERTIFIED FOR THIS TRANSACTION ONLY.

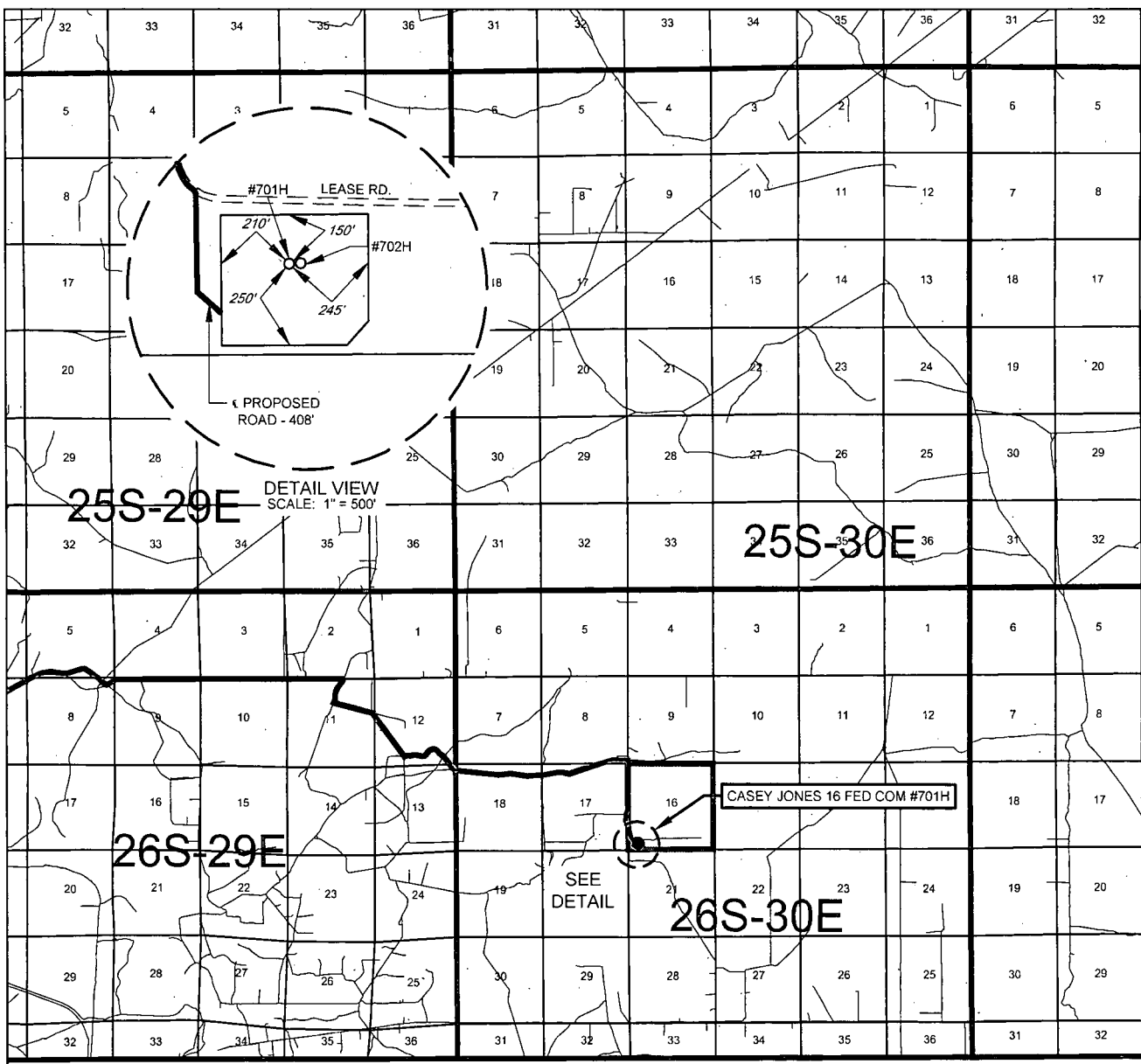
ALL BEARINGS, DISTANCES, AND COORDINATE VALUES CONTAINED HEREON ARE GRID BASED UPON THE NEW MEXICO COORDINATE SYSTEM OF 1983, EAST ZONE, U.S. SURVEY FEET.



TOPOGRAPHIC
 LOYALTY INNOVATION LEGACY

1400 EVERMAN PARKWAY, Ste. 146 • FT. WORTH, TEXAS 76140
 TELEPHONE: (817) 744-7512 • FAX (817) 744-7554
 2903 NORTH BIG SPRING • MIDLAND, TEXAS 79705
 TELEPHONE: (432) 682-1653 OR (800) 767-1653 • FAX (432) 682-1743
 WWW.TOPOGRAPHIC.COM

EXHIBIT 2 VICINITY MAP



LEASE NAME & WELL NO.: CASEY JONES 16 FED COM #701H

SECTION 16 TWP 26-S RGE 30-E SURVEY N.M.P.M.

COUNTY EDDY STATE NM

DESCRIPTION	279' FSL & 524' FWL
-------------	---------------------

DISTANCE & DIRECTION


FROM INT. OF US-285 & CR. 720. GO SOUTH ON US-285 ±12.6 MILES. THENCE NORTHEAST (LEFT) ON WHITEHORN RD. ±4.1 MILES. THENCE EAST (LEFT) ON PIPELINE RD. ±2.8 MILES, THENCE SOUTH (RIGHT) ON TARBRUSH RD. ±4.2 MILES, THENCE SOUTH (RIGHT) ON LEASE RD. ±1.0 MILES, THENCE CONTINUING ON A PROPOSED ACCESS ROAD ±408 FEET, TO A POINT ±250 FEET SOUTHWEST OF THE LOCATION.

THIS EASEMENT/SERVITUDE LOCATION SHOWN HEREON HAS BEEN SURVEYED ON THE GROUND UNDER MY SUPERVISION AND PREPARED ACCORDING TO THE EVIDENCE FOUND AT THE TIME OF SURVEY, AND DATA PROVIDED BY EOG RESOURCES, INC. THIS CERTIFICATION IS MADE AND LIMITED TO THOSE PERSONS OR ENTITIES SHOWN ON THE FACE OF THIS PLAT AND IS NON-TRANSFERABLE. THIS SURVEY IS CERTIFIED FOR THIS TRANSACTION ONLY.

ALL BEARINGS, DISTANCES, AND COORDINATE VALUES CONTAINED HEREON ARE GRID BASED UPON THE NEW MEXICO COORDINATE SYSTEM OF 1983, EAST ZONE, U.S. SURVEY FEET.



SCALE: 1" = 10000'



0' 5000' 10000'

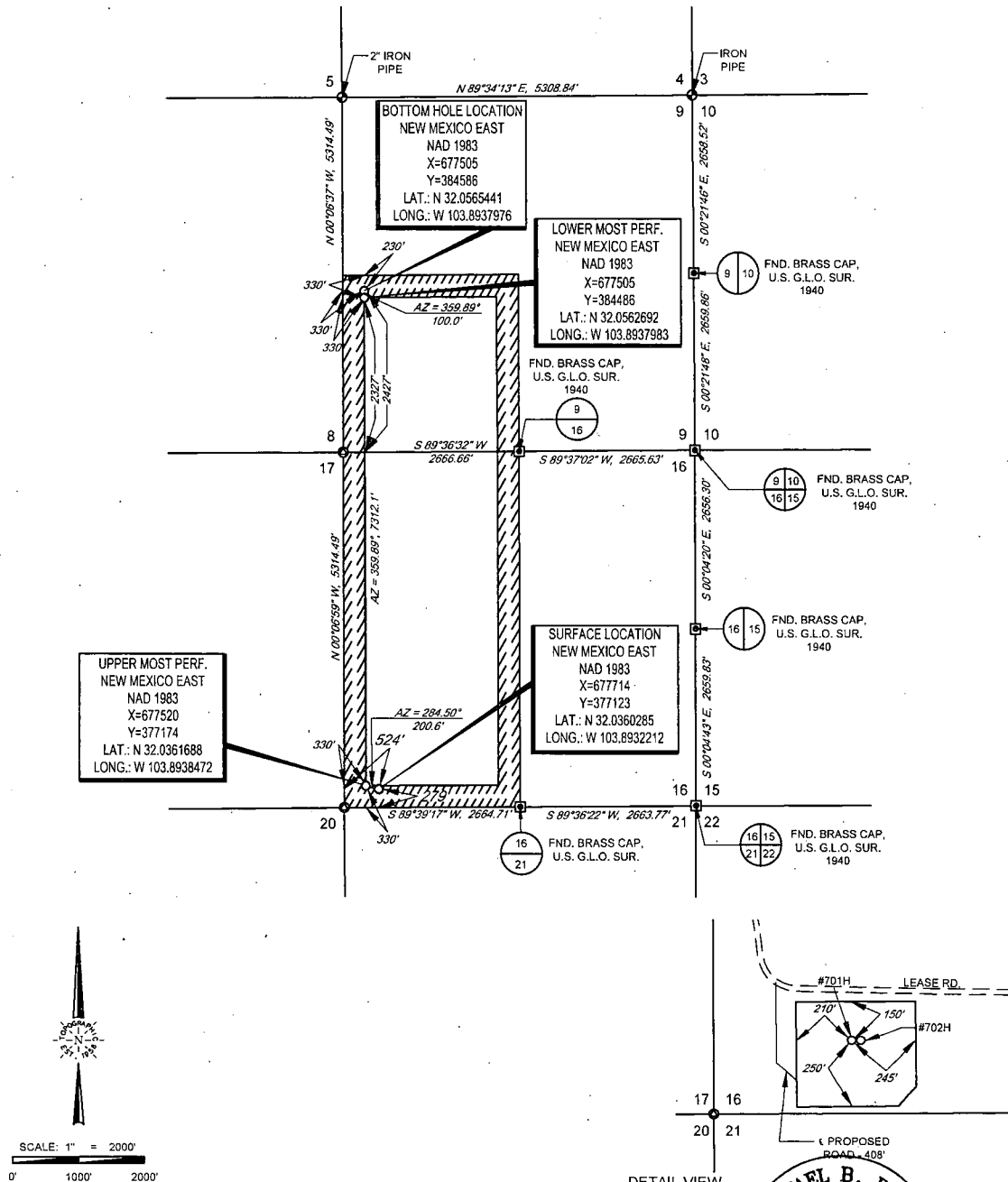


TOPOGRAPHIC
LOYALTY INNOVATION LEGACY

1400 EVERMAN PARKWAY, Ste. 146 • FT. WORTH, TEXAS 76140
TELEPHONE: (817) 744-7512 • FAX (817) 744-7554
2903 NORTH BIG SPRING • MIDLAND, TEXAS 79705
TELEPHONE: (432) 682-1653 OR (800) 767-1653 • FAX (432) 682-1743
WWW.TOPOGRAPHIC.COM

EXHIBIT 2A

SECTION 16, TOWNSHIP 26-S, RANGE 30-E, N.M.P.M.
EDDY COUNTY, NEW MEXICO



LEASE NAME & WELL NO.: CASEY JONES 16 FED COM #701H

SECTION 16 TWP 26-S RGE 30-E SURVEY N.M.P.M.
COUNTY EDDY STATE NM
DESCRIPTION 279' FSL & 524' FWL

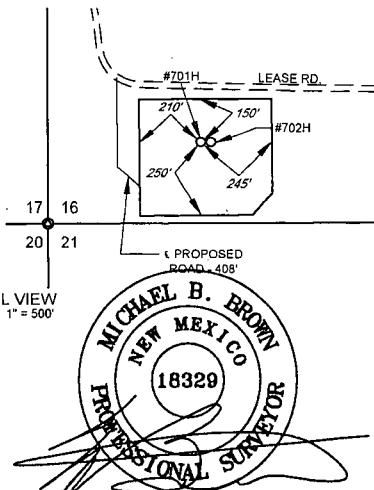
DISTANCE & DIRECTION

FROM INT. OF US-285 & CR. 720, GO SOUTH ON US-285 ±12.6 MILES,
THENCE NORTHEAST (LEFT) ON WHITEHORN RD. ±4.1 MILES, THENCE
EAST (LEFT) ON PIPELINE RD. ±2.8 MILES, THENCE SOUTH (RIGHT) ON
TARBRUSH RD. ±4.2 MILES, THENCE SOUTH (RIGHT) ON LEASE RD. ±1.0
MILES, THENCE CONTINUING ON A PROPOSED ACCESS ROAD ±408
FEET, TO A POINT ±250 FEET SOUTHWEST OF THE LOCATION.

ALL BEARINGS, DISTANCES, AND COORDINATE VALUES CONTAINED HEREON ARE GRID
BASED UPON THE NEW MEXICO COORDINATE SYSTEM OF 1983, EAST ZONE, U.S. SURVEY
FEET.

THIS EASEMENT/SERVITUDE LOCATION SHOWN HEREON HAS BEEN SURVEYED ON THE GROUND
UNDER MY SUPERVISION AND PREPARED ACCORDING TO THE EVIDENCE FOUND AT THE TIME OF
SURVEY, AND DATA PROVIDED BY ECO RESOURCES, INC. THIS CERTIFICATION IS MADE AND LIMITED
TO THOSE PERSONS OR ENTITIES SHOWN ON THE FACE OF THIS PLAT AND IS NON-TRANSFERABLE.
THIS SURVEY IS CERTIFIED FOR THIS TRANSACTION ONLY.

DETAIL VIEW
SCALE: 1" = 500'



Michael Blake Brown, P.S. No. 18329
AUGUST 7, 2018



TOPOGRAPHIC
LOYALTY INNOVATION LEGACY

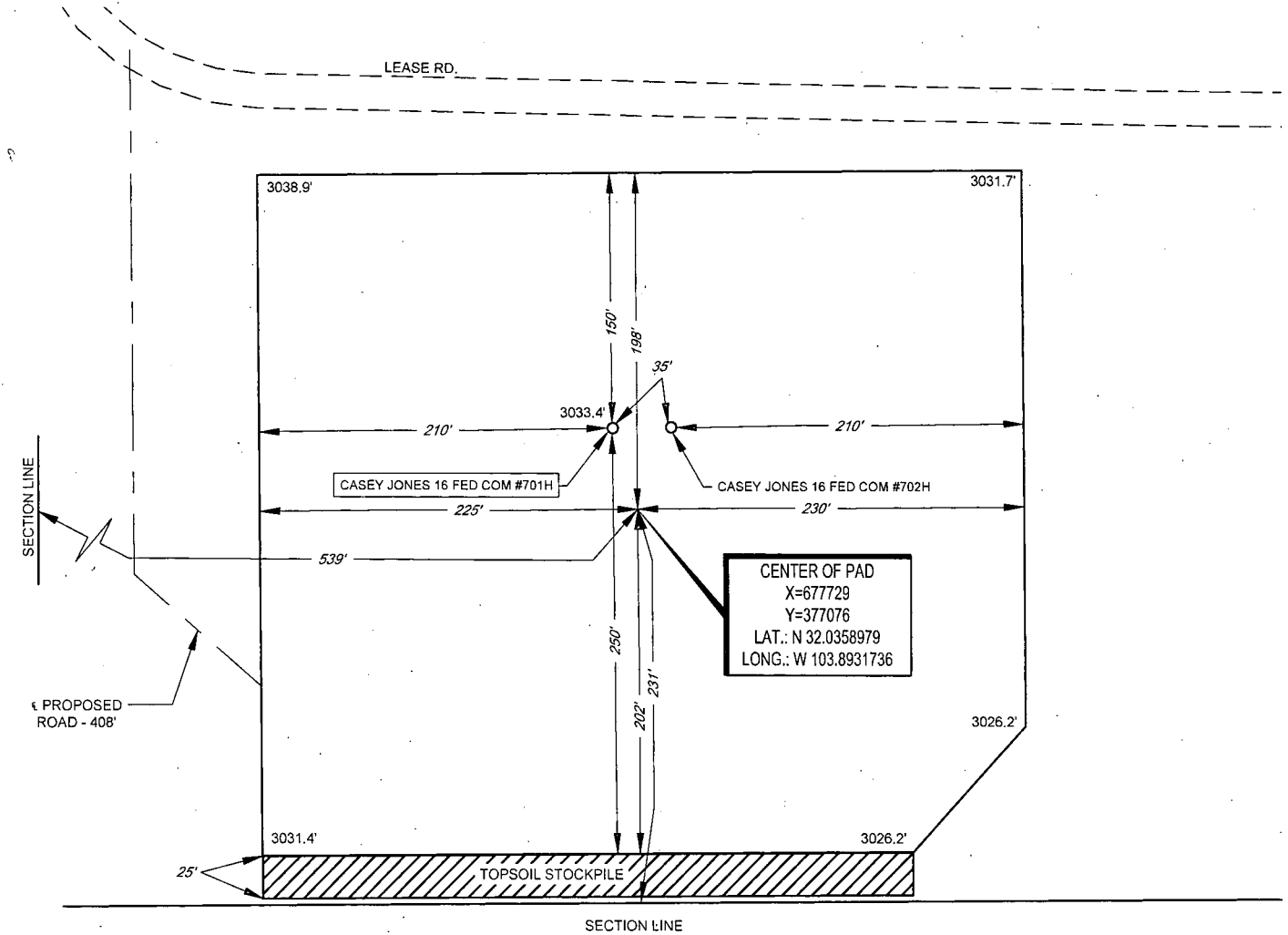
1400 EVERMAN PARKWAY, Ste. 146 - FT. WORTH, TEXAS 76140
TELEPHONE: (817) 744-7512 • FAX: (817) 744-7554
2903 NORTH BIG SPRING • MIDLAND, TEXAS 79705
TELEPHONE: (432) 862-1653 OR (800) 767-1653 • FAX: (432) 862-1743
WWW.TOPOGRAPHIC.COM



EXHIBIT 2B

SECTION 16, TOWNSHIP 26-S, RANGE 30-E, N.M.P.M.
EDDY COUNTY, NEW MEXICO

DETAIL VIEW
SCALE: 1" = 100'



LEASE NAME & WELL NO.: CASEY JONES 16 FED COM #701H
#701H LATITUDE N 32.0360285 #701H LONGITUDE W 103.8932212

CENTER OF PAD IS 231' FSL & 539' FWL

LEGEND

== == == == EXISTING ROAD
--- SECTION LINE
- - - PROPOSED ROAD

SCALE: 1" = 100'
0' 50' 100'

ALL BEARINGS, DISTANCES, AND COORDINATE VALUES CONTAINED HEREON ARE GRID BASED
UPON THE NEW MEXICO COORDINATE SYSTEM OF 1983, EAST ZONE, U.S. SURVEY FEET.

THIS PROPOSED PAD SITE LOCATION SHOWN HEREON HAS BEEN SURVEYED ON THE GROUND UNDER
MY SUPERVISION AND PREPARED ACCORDING TO THE EVIDENCE FOUND AT THE TIME OF SURVEY,
AND DATA PROVIDED BY EOG RESOURCES, INC. THIS CERTIFICATION IS MADE AND LIMITED TO THOSE
PERSONS OR ENTITIES SHOWN ON THE FACE OF THIS PLAT AND IS NON-TRANSFERABLE. THIS
SURVEY IS CERTIFIED FOR THIS TRANSACTION ONLY.

ORIGINAL DOCUMENT SIZE: 8.5" X 11"



TOPOGRAPHIC
LOYALTY INNOVATION LEGACY

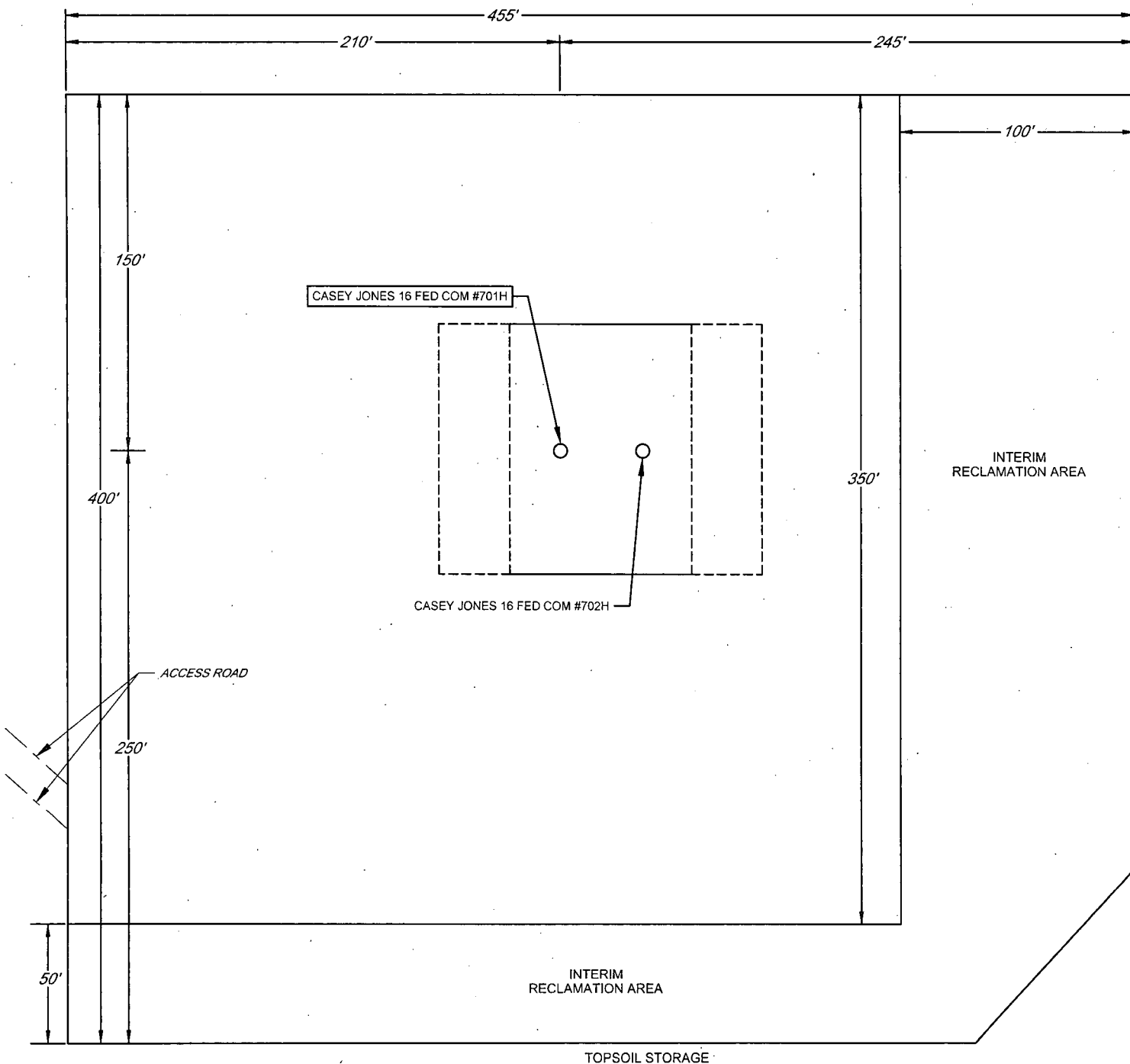
1400 EVERMAN PARKWAY, Ste. 146 • FT. WORTH, TEXAS 76140
TELEPHONE: (817) 744-7512 • FAX (817) 744-7554
2903 NORTH BIG SPRING • MIDLAND, TEXAS 79705
TELEPHONE: (432) 682-1853 OR (800) 767-1853 • FAX (432) 682-1743
WWW.TOPOGRAPHIC.COM

EXHIBIT 2C
RECLAMATION AND FACILITY DIAGRAM - PRODUCTION FACILITIES DIAGRAM

SECTION 16, TOWNSHIP 26-S, RANGE 30-E, N.M.P.M.
EDDY COUNTY, NEW MEXICO

DETAIL VIEW
SCALE: 1" = 60'

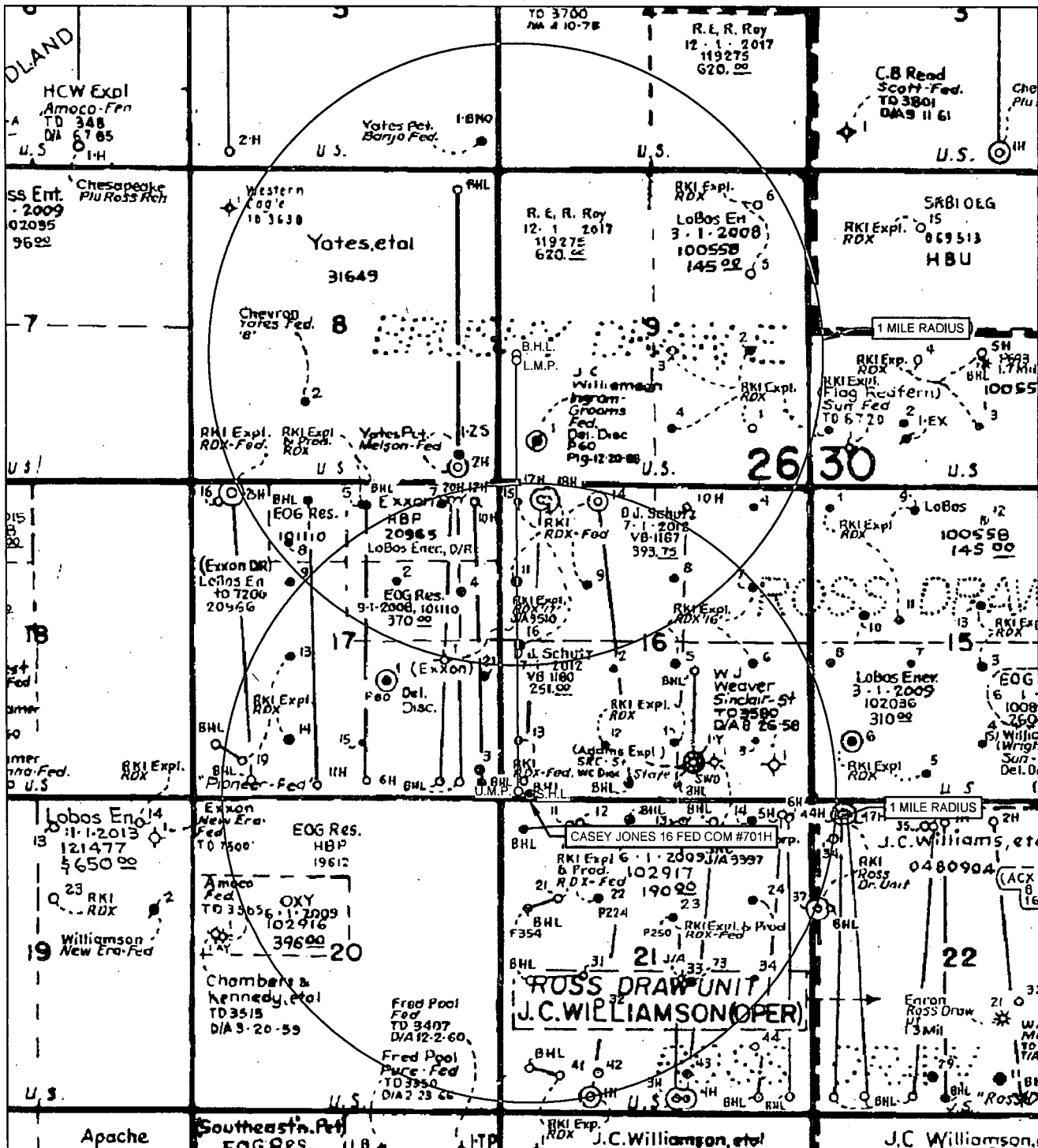
N



LEASE NAME & WELL NO.: CASEY JONES 16 FED COM #701H
#701H LATITUDE N 32.0360285 #701H LONGITUDE W 103.8932212

EXHIBIT 3

SECTION 16, TOWNSHIP 26-S, RANGE 30-E, N.M.P.M.
EDDY COUNTY, NEW MEXICO



LEASE NAME & WELL NO.: CASEY JONES 16 FED COM #701H

#701H LATITUDE N 32.0360285

#701H LONGITUDE W 103.8932212

SCALE: NTS

ALL BEARINGS, DISTANCES, AND COORDINATE VALUES CONTAINED HEREON ARE GRID BASED UPON THE NEW MEXICO COORDINATE SYSTEM OF 1983, EAST ZONE, U.S. SURVEY FEET.

THIS EASEMENT/SERVITUDE LOCATION SHOWN HEREON HAS BEEN SURVEYED ON THE GROUND UNDER MY SUPERVISION AND PREPARED ACCORDING TO THE EVIDENCE FOUND AT THE TIME OF SURVEY, AND DATA PROVIDED BY EOG RESOURCES, INC. THIS CERTIFICATION IS MADE AND LIMITED TO THOSE PERSONS OR ENTITIES SHOWN ON THE FACE OF THIS PLAT AND IS NON-TRANSFERABLE. THIS SURVEY IS CERTIFIED FOR THIS TRANSACTION ONLY.



TOPOGRAPHIC
LOYALTY INNOVATION LEGACY

1400 EVERMAN PARKWAY, Ste. 146 • FT. WORTH, TEXAS 76140
TELEPHONE: (817) 744-7512 • FAX (817) 744-7554
2903 NORTH BIG SPRING • MIDLAND, TEXAS 79705
TELEPHONE: (432) 682-1653 OR (800) 767-1653 • FAX (432) 682-1743
WWW.TOPOGRAPHIC.COM