

Submit 3 Copies To Appropriate District
Office
District I
1625 N. French Dr., Hobbs, NM 88240
District II
1301 W. Grand Ave., Artesia, NM 88210
District III
1000 Rio Brazos Rd., Aztec, NM 87410
District IV
1220 S. St. Francis Dr., Santa Fe, NM
87505

State of New Mexico
Energy, Minerals and Natural Resources

Form C-103
Revised June 10, 2003

OIL CONSERVATION DIVISION
1220 South St. Francis Dr.
Santa Fe, NM 87505

WELL API NO. 30-015-29449
5. Indicate Type of Lease STATE <input checked="" type="checkbox"/> FEE <input type="checkbox"/>
6. State Oil & Gas Lease No.
7. Lease Name or Unit Agreement Name Beretta 15 State
8. Well Number 1
9. OGRID Number 6137
10. Pool name or Wildcat Frontier Hills Strawn, Gas

SUNDRY NOTICES AND REPORTS ON WELLS
(DO NOT USE THIS FORM FOR PROPOSALS TO DRILL OR TO DEEPEN OR PLUG BACK TO A
DIFFERENT RESERVOIR. USE "APPLICATION FOR PERMIT" (FORM C-101) FOR SUCH
PROPOSALS.)

1. Type of Well:
Oil Well ☐ Gas Well ☒ Other

RECEIVED

2. Name of Operator
Devon Energy Production Company, LP

MAY 15 2006

3. Address of Operator
20 North Broadway Oklahoma City, Oklahoma 73102-8260

U.S. ARMY

4. Well Location

Unit Letter N : 660' feet from the South line and 1980' feet from the West line

Section 15 Township 23S Range 26E Eddy County

11. Elevation (Show whether DR, RKB, RT, GR, etc.)
3315' GL; 3335' KB

12. Check Appropriate Box to Indicate Nature of Notice, Report or Other Data
NOTICE OF INTENTION TO:

PERFORM REMEDIAL WORK ☐ PLUG AND ABANDON ☒

TEMPORARILY ABANDON ☐ CHANGE PLANS ☐

PULL OR ALTER CASING ☐ MULTIPLE COMPLETION ☐

OTHER: ☐

SUBSEQUENT REPORT OF:

REMEDIAL WORK ☐ ALTERING CASING ☐

COMMENCE DRILLING OPNS. ☐ PLUG AND ABANDONMENT ☐

CASING TEST AND CEMENT JOB ☐

OTHER: ☐

13. Describe proposed or completed operations. (Clearly state all pertinent details, and give pertinent dates, including estimated date of starting any proposed work). SEE RULE 1103. For Multiple Completions: Attach wellbore diagram of proposed completion or recompletion.

1. Circulate wellbore with 9.0 ppg mud from PBD at 2651'
2. Set 25 Sx cement plug (253') in 5-1/2" casing at 1980'. Covers 9-5/8" casing shoe at 1930'. WOC. Tag cement plug.
3. Cut 5-1/2" casing at 900'. POOH w/casing. TOC on 5-1/2" casing annulus at 940' per CBL run 5/2/06.
4. Set 25 Sx cement casing stub plug (111') at 950'. WOC. Tag cement plug.
5. Set 33 Sx cement plug (100') in 9-5/8" casing at 675'. Covers 13-3/8" casing shoe at 625'. WOC. Tag cement plug.
6. Set 20 Sx (60') surface cement plug. WOC.
7. Cut wellhead off 3' below ground level. Set P&A marker.
8. Restore location.

Note: Cement class "C" at 14.8 ppg with a yield of 1.32 cu. ft/sx.

I hereby certify that the information above is true and complete to the best of my knowledge and belief.

SIGNATURE Ronnie G. Slack

TITLE: Engineering Technician

DATE 5/11/06

Type or print name Ronnie G. Slack

E-mail address: Ronnie.Slack@dvn.com

Telephone No. 405-552-4615

(This space for State use)

APPROVED BY Gerry Guye

TITLE Deputy Field Inspector
District II - Artesia

DATE MAY 16 2006

Conditions of approval, if any:

DEVON ENERGY PRODUCTION COMPANY LP

Well Name: BERETTA 15 STATE #1		Field: SOUTH CARLSBAD	
Location: 660' FSL & 1980' FWL; SEC 15-235-26E		County: EDDY	State: NM
Elevation: 3315' GL & 3335' KB		Spud Date: 5/10/1997	Compl Date: 8/8/1997
API#: 30-015-29449	Prepared by: Ronnie Slack	Date: 05/11/06	Rev:

PROPOSED P&A

17-1/2" hole
13-3/8", 48#, H40, STC, @ 625'
 Cmt'd w/650 sx to surface

TOC on 5-1/2" casing annulus @ 940' (CBL-5/2/06)

12-1/4" hole
9-5/8", 36#, J55, STC, @ 1930'
 Cmt'd w/ 750 sx to surface

DELAWARE BRUSHY CANYON (5/2/06)
 2786-2801; 2812-22; 2826-32; 2846-60; 2872-902
 Acidized w/6500 gals HCl (5/4/06)

Perf 4 sqz holes @ 3100'. Sqzd 535 Sx (4/28/06)

TOC @ 4600' (CBL-4/22/06)

DELAWARE CHERRY CANYON (4/22/06)
 5014-5026' (6 spf, 120")
 Acidized w/1500 gals 7.5% HCl (4/25/06). Swabbed dry.

Perf 4 sqz holes @ 5300' & sqzd 250 Sx (4/19/06)

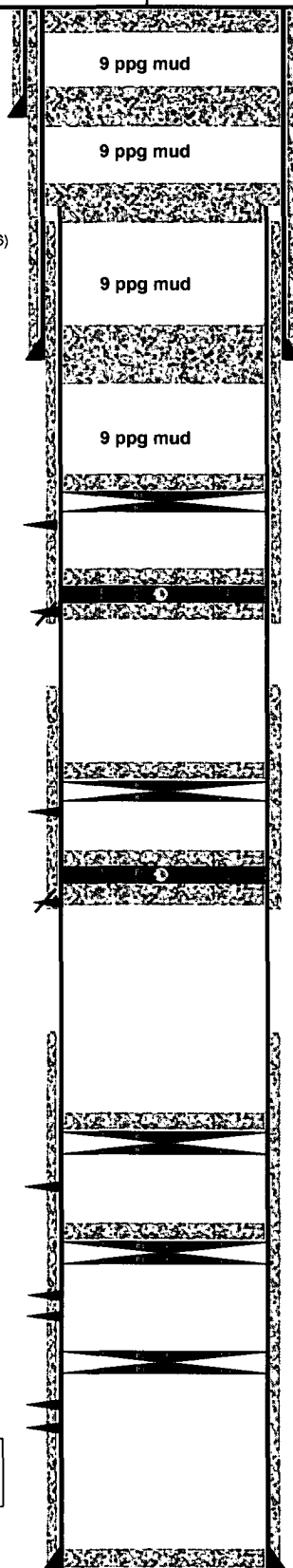
TOC @ 9026' CBL (8-1-97)

ATOKA (7-14-99)
 10525' - 10530'
 acidized w/1000 gals 15% NeFe + CO₂; 8/4/99: 40 Mcf, 0 bo, 0 bw

MORROW (6-28-99)
 11514' - 11520'
 11565' - 11576' Tested water

MORROW (8-5-97)
 11638' - 11644'
 11724' - 11733'
 8-7-97: acidized w/1500 gals, 7-1/2% NeFe, 74000 scf N₂ & 20 ball sealers. 11-9-97: fraced w/22.5K# 20/40 12/97- 2.9 mmcf, 35 bw, 0 bo, 2500# ftp.

8-1/2" Hole
5-1/2", 17#, S95, LTC, @ 12040'
 Cmt'd w/550 sx



Proposed:
 1. Set 60' Cement plug at surface
 2. Cut wellhead off & set dry hole marker

Proposed:
 1. Set 33 Sx Cement plug from 575' to 675'
 2. Tag plug

Proposed:
 1. Cut 5-1/2" casing @ 900'. POOH w/ casing
 2. Set 25 Sx Cement plug at 950'
 3. Tag plug

Proposed:
 1. Set 25 Sx Cement plug at 1980'
 2. Tag plug

35' cement on top. PBD @ 2651' (5/11/06)
 CIBP @ 2686' (5/11/06)

PBD @ 3037' (5/2/06)
 Cement retainer @ 3055' (4/27/06)

35' Cement on top
 CIBP @ 4964' (4/27/06)

PBD @ 5242'
 Retainer set @ 5256' (4/19/06)

35' cement on top. PBD @ 10465'
 CIBP @ 10500' (11/23/05)

35' cement on top
 CIBP @ 11480'. (7-13-99)

CIBP @ 11625'. (6-24-99)

PBD @ 11966'

TD @ 12,040'

DEVON ENERGY PRODUCTION COMPANY LP			
Well Name: BERETTA 15 STATE #1		Field: SOUTH CARLSBAD	
Location: 660' FSL & 1980' FWL; SEC 15-23S-26E		County: EDDY	State: NM
Elevation: 3315' GL & 3335' KB		Spud Date: 5/10/1997	Compl Date: 8/8/1997
API#: 30-015-29449	Prepared by: Ronnie Slack	Date: 05/11/06	Rev:

CURRENT SCHEMATIC

17-1/2" hole
13-3/8", 48#, H40, STC. @ 625'
Cmt'd w/650 sx to surface

TOC @ 940' (CBL-5/2/06)

12-1/4" hole
9-5/8", 36#, J55, STC. @ 1930'
Cmt'd w/ 750 sx to surface

DELAWARE BRUSHY CANYON (5/2/06)
2786-2801; 2812-22; 2826-32; 2846-60; 2872-902
Acidized w/6500 gals HCl (5/4/06)

Perf 4 sqz holes @ 3100'. Sqzd 535 Sx (4/28/06)

TOC @ 4600' (CBL-4/22/06)

DELAWARE CHERRY CANYON (4/22/06)
5014-5026' (6 spf, 120")
Acidized w/1500 gals 7.5% HCl (4/25/06). Swabbed dry.

Perf 4 sqz holes @ 5300' & sqzd 250 Sx (4/19/06)

TOC @ 9026' CBL (8-1-97)

ATOKA (7-14-99)
10525' - 10530'
acidized w/1000 gals 15% NeFe + CO2; 8/4/99: 40 Mcf, 0 bo, 0 bw

MORROW (6-28-99)
11514' - 11520'
11565' - 11576' Tested water

MORROW (8-5-97)
11638' - 11644'
11724' - 11733'

8-7-97: acidized w/1500 gals, 7-1/2% NeFe, 74000 scf N2 & 20 ball sealers. 11-9-97: fraced w/22.5K# 20/40 12/97- 2.9 mmcf, 35 bw, 0 bo, 2500# ftp.

8-1/2" Hole
5-1/2", 17#, S95, LTC. @ 12040'
Cmt'd w/550 sx

35' cement on top. PBD @ 2651' (5/11/06)
CIBP @ 2686' (5/11/06)

PBD @ 3037' (5/2/06)
Cement retainer @ 3055' (4/27/06)

35' Cement on top
CIBP @ 4964' (4/27/06)

PBD @ 5242'
Retainer set @ 5256' (4/19/06)

35' cement on top. PBD @ 10465'
CIBP @ 10500' (11/23/05)

35' cement on top
CIBP @ 11480'. (7-13-99)

CIBP @ 11625'. (6-24-99)

PBTD @ 11966'

TD @ 12,040'

TD @ 12,040'