

UNITED STATES
DEPARTMENT OF THE INTERIOR
BUREAU OF LAND MANAGEMENTNM OIL CONSERVATION
ARTESIA DISTRICT
OCD Artesia 2019
OCT 1 2019FORM APPROVED
OMB No. 1004-0137
Expires: July 31, 2010

WELL COMPLETION OR RECOMPLETION REPORT AND RECEIVED

5. Lease Serial No.
NMNM88139

- 1a. Type of Well ☒ Oil Well ☐ Gas Well ☐ Dry ☐ Other
b. Type of Completion ☒ New Well ☐ Work Over ☐ Deepen ☐ Plug Back ☐ Diff. Resvr.
Other _____

6. If Indian, Allottee or Tribe Name

7. Unit or CA Agreement Name and No.

2. Name of Operator
OXY USA INCORPORATED
Contact: JANA MENDIOLA
E-Mail: janalyn_mendiola@oxy.com8. Lease Name and Well No.
CORRAL FLY 35-26 FEDERAL COM 31H3. Address 5 GREENWAY PLAZA SUITE 110
HOUSTON, TX 77046-05213a. Phone No. (include area code)
Ph: 432-685-59369. API Well No.
30-015-44726-00-S1

4. Location of Well (Report location clearly and in accordance with Federal requirements)*

Sec 2 T25S R29E Mer NMP

At surface Lot 4 694FNL 1008FWL 32.164627 N Lat, 103.960435 W Lon

Sec 35 T24S R29E Mer NMP

At top prod interval reported below SWSW 364FSL 518FWL 32.167540 N Lat, 103.962010 W Lon

Sec 26 T24S R29E Mer NMP

At total depth NWNW 243FNL 447FWL 32.194980 N Lat, 103.962130 W Lon

10. Field and Pool, or Exploratory
PURPLE SAGE-WOLFCAMP (GAS)11. Sec., T., R., M., or Block and Survey
or Area Sec 2 T25S R29E Mer NMP12. County or Parish
EDDY13. State
NM14. Date Spudded
11/18/201815. Date T.D. Reached
03/08/201916. Date Completed
☐ D & A ☒ Ready to Prod.
04/23/201917. Elevations (DF, KB, RT, GL)*
3014 GL18. Total Depth: MD 20840
TVD 1023919. Plug Back T.D.: MD 20786
TVD 1023920. Depth Bridge Plug Set: MD
TVD21. Type Electric & Other Mechanical Logs Run (Submit copy of each)
GAMMARAY CBL22. Was well cored? ☒ No ☐ Yes (Submit analysis)
Was DST run? ☒ No ☐ Yes (Submit analysis)
Directional Survey? ☐ No ☒ Yes (Submit analysis)

23. Casing and Liner Record (Report all strings set in well)

Hole Size	Size/Grade	Wt. (#/ft.)	Top (MD)	Bottom (MD)	Stage Cementer Depth	No. of Sks. & Type of Cement	Slurry Vol. (BBL)	Cement Top*	Amount Pulled
14.750	10.750 J55	45.5	0	722		1150	281	0	
9.875	7.625 HCL80	26.4	0	9772		2094	844	0	
6.750	5.500 P110	20.0	0	20827		880	208	9268	

24. Tubing Record

Size	Depth Set (MD)	Packer Depth (MD)	Size	Depth Set (MD)	Packer Depth (MD)	Size	Depth Set (MD)	Packer Depth (MD)

25. Producing Intervals

26. Perforation Record

Formation	Top	Bottom	Perforated Interval	Size	No. Holes	Perf. Status
A) WOLFCAMP	10851	20727	10851 TO 20727	0.370	1200	ACTIVE
B)						
C)						
D)						

27. Acid, Fracture, Treatment, Cement Squeeze, Etc.

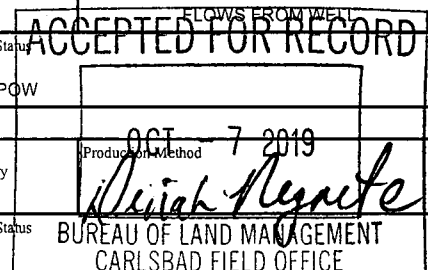
Depth Interval	Amount and Type of Material
10851 TO 20727	8662500G SLICKWATER + 27090G 7.5% HCL ACID W/14980048# SAND

28. Production - Interval A

Date First Produced	Test Date	Hours Tested	Test Production	Oil BBL	Gas MCF	Water BBL	Oil Gravity Corr. API	Gas Gravity	Production Method
04/24/2019	06/12/2019	24	→	2685.0	6077.0	4843.0			
Choke Size	Tbg. Press. Flwg.	Csg. Press.	24 Hr. Rate	Oil BBL	Gas MCF	Water BBL	Gas:Oil Ratio	Well Status	
50/128	SI	1388.0	→	2685	6077	4843	2263	POW	

28a. Production - Interval B

Date First Produced	Test Date	Hours Tested	Test Production	Oil BBL	Gas MCF	Water BBL	Oil Gravity Corr. API	Gas Gravity	Production Method
			→						
Choke Size	Tbg. Press. Flwg.	Csg. Press.	24 Hr. Rate	Oil BBL	Gas MCF	Water BBL	Gas:Oil Ratio	Well Status	
	SI		→						



(See Instructions and spaces for additional data on reverse side)

ELECTRONIC SUBMISSION #473033 VERIFIED BY THE BLM WELL INFORMATION SYSTEM

** BLM REVISED ** BLM REVISED ** BLM REVISED ** BLM REVISED ** BLM REVISED **

Reclamation Due: 10/23/2019

28b. Production - Interval C

Date First Produced	Test Date	Hours Tested	Test Production	Oil BBL	Gas MCF	Water BBL	Oil Gravity Corr. API	Gas Gravity	Production Method
			→						
Choke Size	Tbg. Press. Flwg. SI	Csg. Press.	24 Hr. Rate	Oil BBL	Gas MCF	Water BBL	Gas:Oil Ratio	Well Status	
			→						

28c. Production - Interval D

Date First Produced	Test Date	Hours Tested	Test Production	Oil BBL	Gas MCF	Water BBL	Oil Gravity Corr. API	Gas Gravity	Production Method
			→						
Choke Size	Tbg. Press. Flwg. SI	Csg. Press.	24 Hr. Rate	Oil BBL	Gas MCF	Water BBL	Gas:Oil Ratio	Well Status	
			→						

29. Disposition of Gas(Sold, used for fuel, vented, etc.)
SOLD

30. Summary of Porous Zones (Include Aquifers):

Show all important zones of porosity and contents thereof: Cored intervals and all drill-stem tests, including depth interval tested, cushion used, time tool open, flowing and shut-in pressures and recoveries.

31. Formation (Log) Markers

Formation	Top	Bottom	Descriptions, Contents, etc.	Name	Top
					Meas. Depth
BELL CANYON	3149	4029	OIL, GAS, WATER	RUSTLER	250
CHERRY CANYON	4030	5595	OIL, GAS, WATER	SALADO	729
BRUSHY CANYON	5596	7014	OIL, GAS, WATER	CASTILE	1671
BONE SPRING	7015	7833	OIL, GAS, WATER	LAMAR	3120
BONE SPRING 1ST	7834	8615	OIL, GAS, WATER	BELL CANYON	3149
BONE SPRING 2ND	8616	9747	OIL, GAS, WATER	CHERRY CANYON	4030
BONE SPRING 3RD	9748	10302	OIL, GAS, WATER	BRUSHY CANYON	5596
WOLFCAMP	10303		OIL, GAS, WATER	BONE SPRING	7015

32. Additional remarks (include plugging procedure):
52. FORMATION (LOG) MARKERS CONTD.

1ST BONE SPRING 7834' MD
2ND BONE SPRING 8616' MD
3RD BONE SPRING 9748' MD
WOLFCAMP 10303' MD

Logs were mailed 7/12/19.

33. Circle enclosed attachments:

- | | | | |
|---|--------------------|---------------|-----------------------|
| 1. Electrical/Mechanical Logs (1 full set req'd.) | 2. Geologic Report | 3. DST Report | 4. Directional Survey |
| 5. Sundry Notice for plugging and cement verification | 6. Core Analysis | 7 Other: | |

34. I hereby certify that the foregoing and attached information is complete and correct as determined from all available records (see attached instructions):

Electronic Submission #473033 Verified by the BLM Well Information System.
For OXY USA INCORPORATED, sent to the Carlsbad
Committed to AFMSS for processing by DINAH NEGRETE on 10/07/2019 (20DCN0004SE)

Name (please print) JANA MENDIOLA

Title REGULATORY SPECIALIST

Signature (Electronic Submission)

Date 07/11/2019

Title 18 U.S.C. Section 1001 and Title 43 U.S.C. Section 1212, make it a crime for any person knowingly and willfully to make to any department or agency of the United States any false, fictitious or fraudulent statements or representations as to any matter within its jurisdiction.

** REVISED ** REVISED ** REVISED ** REVISED ** REVISED ** REVISED ** REVISED ** REVISED **

Additional data for transaction #473033 that would not fit on the form

32. Additional remarks, continued

Log Header, Directional Survey, As-Drilled Amended C-102 plat & WBD are attached.

District I
1625 N. French Dr., Hobbs, NM 88240
Phone: (575) 393-6161 Fax: (575) 393-0720
District II
811 S. First St., Artesia, NM 88210
Phone: (575) 748-1283 Fax: (575) 748-9720
District III
1000 Elko Branch Road, Aztec, NM 87410
Phone: (505) 334-6178 Fax: (505) 334-4170
District IV
1220 S. St. Francis Dr., Santa Fe, NM 87505
Phone: (505) 476-3460 Fax: (505) 476-3462

State of New Mexico
Energy, Minerals & Natural Resources Department
OIL CONSERVATION DIVISION
1220 South St. Francis Dr.
Santa Fe, NM 87505

Form C-102
Revised August 1, 2011
Submit one copy to appropriate
District Office

☒ AMENDED REPORT
(As-Drilled)

WELL LOCATION AND ACREAGE DEDICATION PLAT

API Number 30-015-44726	Pool Code 98220	Pool Name Purple Sage Wolfcamp
Property Code 320767	Property Name CORRAL FLY "35-26" FEDERAL COM	Well Number 31H
OGRID No. 16696	Operator Name OXY USA INC.	Elevation 3013.7'

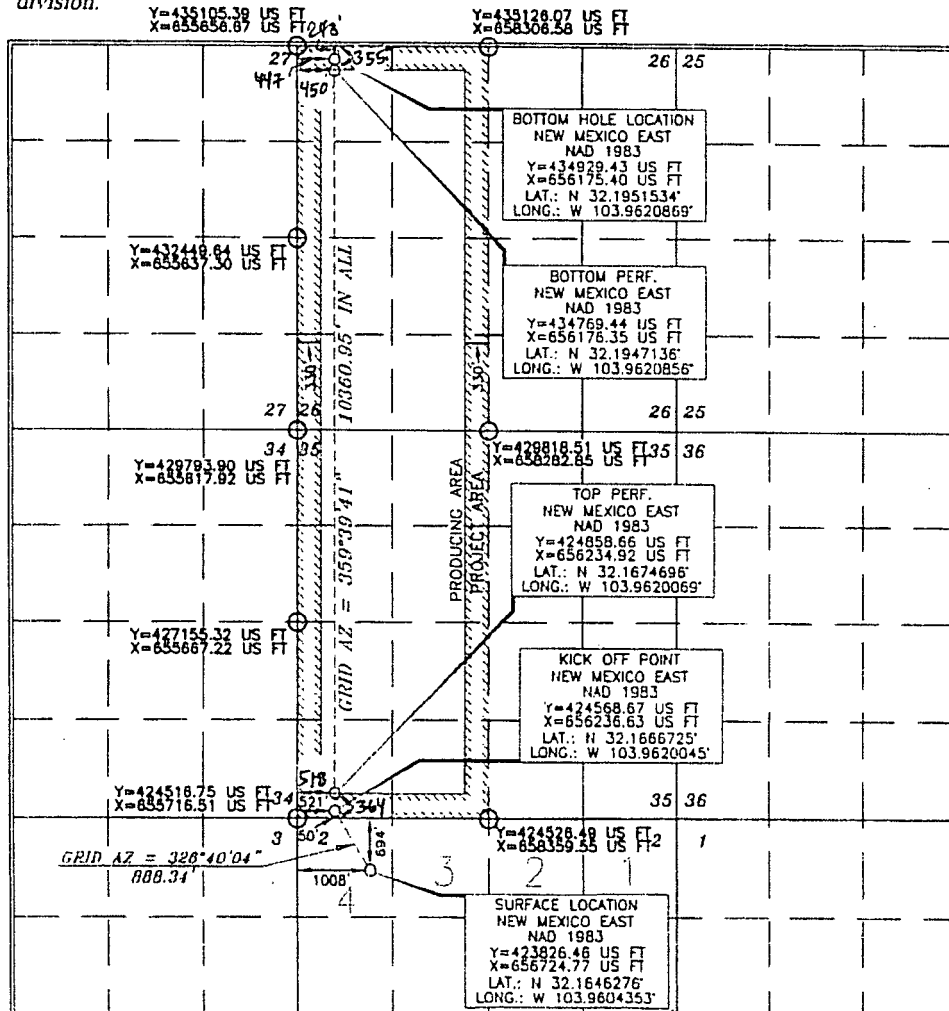
Surface Location

UL or lot no.	Section	Township	Range	Lot Idn	Feet from the	North/South line	Feet from the	East/West line	County
4	2	25 SOUTH	29 EAST, N.M.P.M.		694'	NORTH	1008'	WEST	EDDY

Bottom Hole Location If Different From Surface

UL or lot no.	Section	Township	Range	Lot Idn	Feet from the	North/South line	Feet from the	East/West line	County
D	26	24 SOUTH	29 EAST, N.M.P.M.		189' 243	NORTH	520' 447	WEST	EDDY
Dedicated Acres 640	Joint or Infill Y	Consolidation Code	Order No. LTP - 355 FNL 450 FWL FTP - 364 FSL 518 FWL						

No allowable will be assigned to this completion until all interests have been consolidated or a non-standard unit has been approved by the division.



OPERATOR CERTIFICATION

I hereby certify that the information contained herein is true and complete to the best of my knowledge and belief, and that this organization either owns a working interest or undivided mineral interest in the land including the proposed bottom hole location or has a right to drill this well at this location pursuant to a contract with an owner of such a mineral or working interest, or to a voluntary pooling agreement or a compulsory pooling order.

Signature: *[Signature]* Date: **4/22/19**
Printed Name: **Jana Mendiola**
E-mail Address: **janalyn-mendiola@oxy.com**

SURVEYOR CERTIFICATION

I hereby certify that the well location shown on this plat was plotted from a survey of actual surveys made by me or under my supervision, and that the same is true and correct to the best of my belief.

Signature: *[Signature]* Date of Survey: **APR 20 2017**
Professional Surveyor: **15079**
Certificate Number: **15079**