

UNITED STATES
DEPARTMENT OF THE INTERIOR
BUREAU OF LAND MANAGEMENTFORM APPROVED
OMB NO. 1004-0137
Expires: January 31, 2018**SUNDRY NOTICES AND REPORTS ON WELLS**
*Do not use this form for proposals to drill or to re-enter an abandoned well. Use form 3160-3 (APD) for such proposals.*5. Lease Serial No.
NMNM134868

6. If Indian, Allottee or Tribe Name

7. If Unit or CA/Agreement, Name and/or No.

8. Well Name and No.
LEATHERNECK 3029 FED COM 206H9. API Well No.
30-015-45984-00-X110. Field and Pool or Exploratory Area
BURTON FLAT - WOLFCAMP EAST11. County or Parish, State
EDDY COUNTY, NM**SUBMIT IN TRIPLICATE - Other instructions on page 2**

1. Type of Well

☒ Oil Well ☐ Gas Well ☐ Other

2. Name of Operator

MATADOR PRODUCTION COMPANY

Contact: CADE LABOLT

Mail: cade.labolt@matadorresources.com

3a. Address

ONE LINCOLN CENTER 5400 LBJ FREEWAY SUITE 1500
DALLAS, TX 75240

3b. Phone No. (include area code)

972-629-2158

4. Location of Well (Footage, Sec., T., R., M., or Survey Description)

Sec 30 T20S R29E SWNW 1540FNL 206FWL
32.547588 N Lat, 104.121788 W Lon**12. CHECK THE APPROPRIATE BOX(ES) TO INDICATE NATURE OF NOTICE, REPORT, OR OTHER DATA**

TYPE OF SUBMISSION

TYPE OF ACTION

☒ Notice of Intent☐ Subsequent Report☐ Final Abandonment Notice☐ Acidize☒ Alter Casing☐ Casing Repair☐ Change Plans☐ Convert to Injection☐ Deepen☐ Hydraulic Fracturing☐ New Construction☐ Plug and Abandon☐ Plug Back☐ Production (Start/Resume)☐ Reclamation☐ Recomplete☐ Temporarily Abandon☐ Water Disposal☐ Water Shut-Off☐ Well Integrity☐ Other

13. Describe Proposed or Completed Operation: Clearly state all pertinent details, including estimated starting date of any proposed work and approximate duration thereof. If the proposal is to deepen directionally or recompleat horizontally, give subsurface locations and measured and true vertical depths of all pertinent markers and zones. Attach the Bond under which the work will be performed or provide the Bond No. on file with BLM/BIA. Required subsequent reports must be filed within 30 days following completion of the involved operations. If the operation results in a multiple completion or recompleat in a new interval, a Form 3160-4 must be filed once testing has been completed. Final Abandonment Notices must be filed only after all requirements, including reclamation, have been completed and the operator has determined that the site is ready for final inspection.

BLM Bond No.: NMB0001079

Surety Bond No.: RLB0015172

GC 10/10/19
Accepted for record - NMOCD

Matador is proposing a production casing change for the 5-1/2" 20# P110 casing. Matador plans to run 5-1/2" 20# P110 Tec-Lock Wedge in place of 5-1/2" 20# P110 DWC/C IS Plus (spec sheet attached).

This change is applied to all of the following Leatherneck 3029 Fed Com wells:

Leatherneck 3029 Fed Com 135H (API# 30-015-46001)

Leatherneck 3029 Fed Com 205H (API# 30-015-45983)

Leatherneck 3029 Fed Com 206H (API# 30-015-45984)

Carlsbad Field Office
OCD Artesia**EXISTING CONS STILL APPLY**

14. I hereby certify that the foregoing is true and correct.

Electronic Submission #484875 verified by the BLM Well Information System

For MATADOR PRODUCTION COMPANY, sent to the Carlsbad

Committed to AFMSS for processing by PRISCILLA PEREZ on 09/25/2019 (19PP3438SE) NM OIL CONSERVATION

Name (Printed/Typed) CADE LABOLT

Title ASSOCIATE LANDMAN

OCT 07 2019

Signature (Electronic Submission)

Date 09/24/2019

THIS SPACE FOR FEDERAL OR STATE OFFICE USE**RECEIVED**

Approved By NDUNGU KAMAU

Title PETROLEUM ENGINEER

Date 10/03/2019

Conditions of approval, if any, are attached. Approval of this notice does not warrant or certify that the applicant holds legal or equitable title to those rights in the subject lease which would entitle the applicant to conduct operations thereon.

Office Carlsbad

Title 18 U.S.C. Section 1001 and Title 43 U.S.C. Section 1212, make it a crime for any person knowingly and willfully to make to any department or agency of the United States any false, fictitious or fraudulent statements or representations as to any matter within its jurisdiction.

(Instructions on page 2)

**** BLM REVISED ** BLM REVISED ** BLM REVISED ** BLM REVISED ** BLM REVISED ****

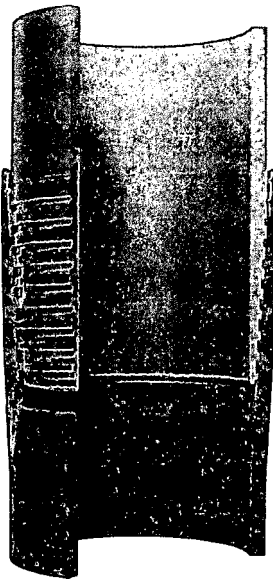
Additional data for EC transaction #484875 that would not fit on the form

32. Additional remarks, continued

Leatherneck 3029 Fed Com 136H (API# 30-015-45986)

Revisions to Operator-Submitted EC Data for Sundry Notice #484875

	Operator Submitted	BLM Revised (AFMSS)
Sundry Type:	CSG-ALTER NOI	CSG-ALTER NOI
Lease:	NMNM134868	NMNM134868
Agreement:		
Operator:	MATADOR PRODUCTION COMPANY 5400 LBJ FWY SUITE 1500 DALLAS, TX 75240 Ph: 972-371-5200	MATADOR PRODUCTION COMPANY ONE LINCOLN CENTER 5400 LBJ FREEWAY SUITE 1500 DALLAS, TX 75240 Ph: 972.371.5200
Admin Contact:	CADE LABOLT ASSOCIATE LANDMAN E-Mail: cade.labolt@matadorresources.com Ph: 9726292158	CADE LABOLT ASSOCIATE LANDMAN E-Mail: cade.labolt@matadorresources.com Ph: 972-629-2158
Tech Contact:	CADE LABOLT ASSOCIATE LANDMAN E-Mail: cade.labolt@matadorresources.com Ph: 9726292158	CADE LABOLT ASSOCIATE LANDMAN E-Mail: cade.labolt@matadorresources.com Ph: 972-629-2158
Location:		
State:	NM	NM
County:	EDDY	EDDY
Field/Pool:	BURTON FLAT EAST; UPP WC	BURTON FLAT - WOLFCAMP EAST
Well/Facility:	LEATHERNECK 3029 FED COM 206H Sec 30 T20S R29E Mer NMP 1540FNL 206FWL	LEATHERNECK 3029 FED COM 206H Sec 30 T20S R29E SWNW 1540FNL 206FWL 32.547588 N Lat, 104.121788 W Lon



TEC-LOCK WEDGE

5.500" 20 LB/FT (.361"Wall)

Benteler P110 CY HC

Pipe Body Data

Nominal OD:	5.500	in
Nominal Wall:	.361	in
Nominal Weight:	20.00	lb/ft
Plain End Weight:	19.83	lb/ft
Material Grade:	P110 CY HC	
Mill/Specification:	Benteler	
Yield Strength:	125,000	psi
Tensile Strength:	130,000	psi
Nominal ID:	4.778	in
API Drift Diameter:	4.653	in
Special Drift Diameter:	None	in
RBW:	87.5 %	
Body Yield:	729,000	lbf
Burst:	14,360	psi
Collapse:	13,000	psi

Connection Data

Standard OD:	5.920	in
Pin Bored ID:	4.778	in
Critical Section Area:	5.656	in ²
Tensile Efficiency:	97 %	
Compressive Efficiency:	100 %	
Longitudinal Yield Strength:	707,000	lbf
Compressive Limit:	729,000	lbf
Internal Pressure Rating:	14,360	psi
External Pressure Rating:	13,000	psi
Maximum Bend:	101.2	°/100ft

Operational Data

Minimum Makeup Torque:	15,000	ft*lb
Optimum Makeup Torque:	18,700	ft*lb
Maximum Makeup Torque:	41,200	ft*lb
Minimum Yield:	45,800	ft*lb
Makeup Loss:	5.97	in

Notes Operational Torque is equivalent to the Maximum Make-Up Torque

