

State of New Mexico  
Energy, Minerals and Natural Resources Department

Michelle Lujan Grisham  
Governor

Sarah Cottrell Propst  
Cabinet Secretary

Todd E. Leahy, JD, PhD  
Deputy Secretary

Adrienne Sandoval, Division Director  
Oil Conservation Division



## Notice of C-104 Denial and Request for Information

OCD denies your C-104 – *Request for Allowable and Authorization to Transport* because it is incomplete or conflicts with other information provided to OCD.

The sale or transport of product without a C-104 approved by OCD violates the Oil and Gas Act and the implementing rules, including 19.15.7.15 and 19.15.16.19 NMAC.

To avoid an enforcement action, you must submit the indicated information no later than 30 days after receipt of this notice.

### Test Allowable, New Well and Recompleted Well

- ☐ C-103 (or BLM equivalent) for all casing strings
  - ☐ Spud Notice
  - ☐ Surface Casing
  - ☐ Intermediate Casing (if applicable)
  - ☐ Additional Intermediate Casing (if applicable)
  - ☐ Production Casing or Liner
- ☐ Applicable Order (NSL, NSP, Other Teg?/PBTD?/TD?/Packer?)

- ☐ Deviation Survey for Vertical Wells

- ☒ Directional Survey Certified

- ☒ C-102 (As-Drilled Plat for Horizontal Well)

### New Well and Recompleted Well Only

- ☒ C-103 Completion Sundry (or BLM equivalent)

- ☒ C-105 Completion Report (or BLM equivalent)

- ☒ All Logs Run on Well ?

AMEND C-104

} Read Rule  
19.15.7.14  
HARD COPY C-103's  
accepted in place  
of online reporting

AMEND

If you have any questions please contact the local OCD District Office

RECEIVED

District I  
1625 N. French Dr., Hobbs, NM 88240  
District II  
811 S. First St., Artesia, NM 88210  
District III  
1000 Rio Brazos Rd., Aztec, NM 87410  
District IV  
1220 S. St. Francis Dr., Santa Fe, NM 87505

State of New Mexico  
Energy, Minerals & Natural Resources

NOV 19 2019

Form C-104  
Revised August 1, 2011

Oil Conservation Division  
1220 South St. Francis Dr.  
Santa Fe, NM 87505

DISTRICT/ARTESIA/000

Copy to appropriate District Office

☐ AMENDED REPORT**I. REQUEST FOR ALLOWABLE AND AUTHORIZATION TO TRANSPORT**

<sup>1</sup> Operator name and Address COG Operating LLC 2208 W. Main Street Artesia, NM 88210		<sup>2</sup> OGRID Number 229137
		<sup>3</sup> Reason for Filing Code/ Effective Date NW
API Number 30-015-45549	<sup>5</sup> Pool Name Delaware River; Bone Spring	<sup>6</sup> Pool Code 16800
<sup>7</sup> Property Code 323005	<sup>8</sup> Property Name SRO 4 State Com	<sup>9</sup> Well Number 503H

**II. <sup>10</sup> Surface Location**

Ul or lot no. D	Section 4	Township 26S	Range 28E	Lot Idn	Feet from the 223	North/South Line North	Feet from the 1160	East/West line West	County Eddy
--------------------	--------------	-----------------	--------------	---------	----------------------	---------------------------	-----------------------	------------------------	----------------

**<sup>11</sup> Bottom Hole Location**

Ul or lot no. M	Section 9	Township 26S	Range 28E	Lot Idn	Feet from the 50	North/South Line South	Feet from the 338	East/West line West	County Eddy
<sup>12</sup> Lse Code S	<sup>13</sup> Producing Method Code F	<sup>14</sup> Gas Connection Date 10/24/19	<sup>15</sup> C-129 Permit Number	<sup>16</sup> C-129 Effective Date	<sup>17</sup> C-129 Expiration Date				

**III. Oil and Gas Transporters**

<sup>18</sup> Transporter OGRID	<sup>19</sup> Transporter Name and Address	<sup>20</sup> O/G/W
	ACC	O
298751	Energy Transfer 2001 Bryan Street, Ste 3700 Dallas, TX 75201	G
	Holly Refining and Marketing	O

**IV. Well Completion Data**

<sup>21</sup> Spud Date 2/19/19	<sup>22</sup> Ready Date 10/24/19	<sup>23</sup> TD 18,246'	<sup>24</sup> PBDT 18,140'	<sup>25</sup> Perforations 8,181-18,120'	<sup>26</sup> DHC, MC
<sup>27</sup> Hole Size	<sup>28</sup> Casing & Tubing Size	<sup>29</sup> Depth Set	<sup>30</sup> Sacks Cement		
17 1/2"	13 3/8"	700'	625		
12 1/4"	9 7/8"	2,441'	745		
8 3/4"	5.5"	18,232'	3385		
	2 7/8"	7,430'			

**V. Well Test Data**

<sup>31</sup> Date New Oil 10/24/19	<sup>32</sup> Gas Delivery Date 10/24/19	<sup>33</sup> Test Date 10/24/19	<sup>34</sup> Test Length 24 Hrs	<sup>35</sup> Tbg. Pressure 800#	<sup>36</sup> Csg. Pressure 200#
<sup>37</sup> Choke Size 32/64"	<sup>38</sup> Oil 131	<sup>39</sup> Water 2173	<sup>40</sup> Gas 264		<sup>41</sup> Test Method Flowing

<sup>42</sup> I hereby certify that the rules of the Oil Conservation Division have been complied with and that the information given above is true and complete to the best of my knowledge and belief.

Signature:

*Amanda Avery*

Printed name:

Amanda Avery

Title:

Regulatory Analyst

E-mail Address:

aavery@concho.com

Date: 10/30/19

Phone:

575-748-6962

OIL CONSERVATION DIVISION

Approved by:

Title:

Approval:

**DENIED**  
**See Attached Cover Sheet**

RECEIVED

DISTRICT I  
1625 N. FRENCH DR., HOBBS, NM 88240  
Phone: (575) 393-6181 Fax: (575) 393-0720

DISTRICT II  
811 S. FIRST ST., ARTESIA, NM 88210  
Phone: (575) 748-1283 Fax: (575) 748-0720

DISTRICT III  
1000 RIO BRAZOS RD., AZTEC, NM 87601  
Phone: (505) 334-6178 Fax: (505) 334-6179

DISTRICT IV  
1220 S. ST. FRANCIS DR., SANTA FE, NM 87505  
Phone: (505) 478-3460 Fax: (505) 478-3462

State of New Mexico  
Energy, Minerals & Natural Resources Department  
NOV 19 2019  
CONSERVATION DIVISION  
1220 SOUTH ST. FRANCIS DR.  
Santa Fe, New Mexico 87505

Form C-102  
Revised August 1, 2011  
Submit one copy to appropriate  
District Office

☐ AMENDED REPORT

WELL LOCATION AND ACREAGE DEDICATION PLAT

API Number 30-015-45549		Pool Code 16800	Pool Name Delaware River; Bone Spring
Property Code 323005	Property Name SRO 4 STATE COM		Well Number 503H
OGRID No. 229137	Operator Name COG OPERATING, LLC		Elevation 2990.2'

Surface Location

UL or lot No.	Section	Township	Range	Lot Idn	Feet from the	North/South line	Feet from the	East/West line	County
D	4	26-S	28-E		223	NORTH	1160	WEST	EDDY

Bottom Hole Location If Different From Surface

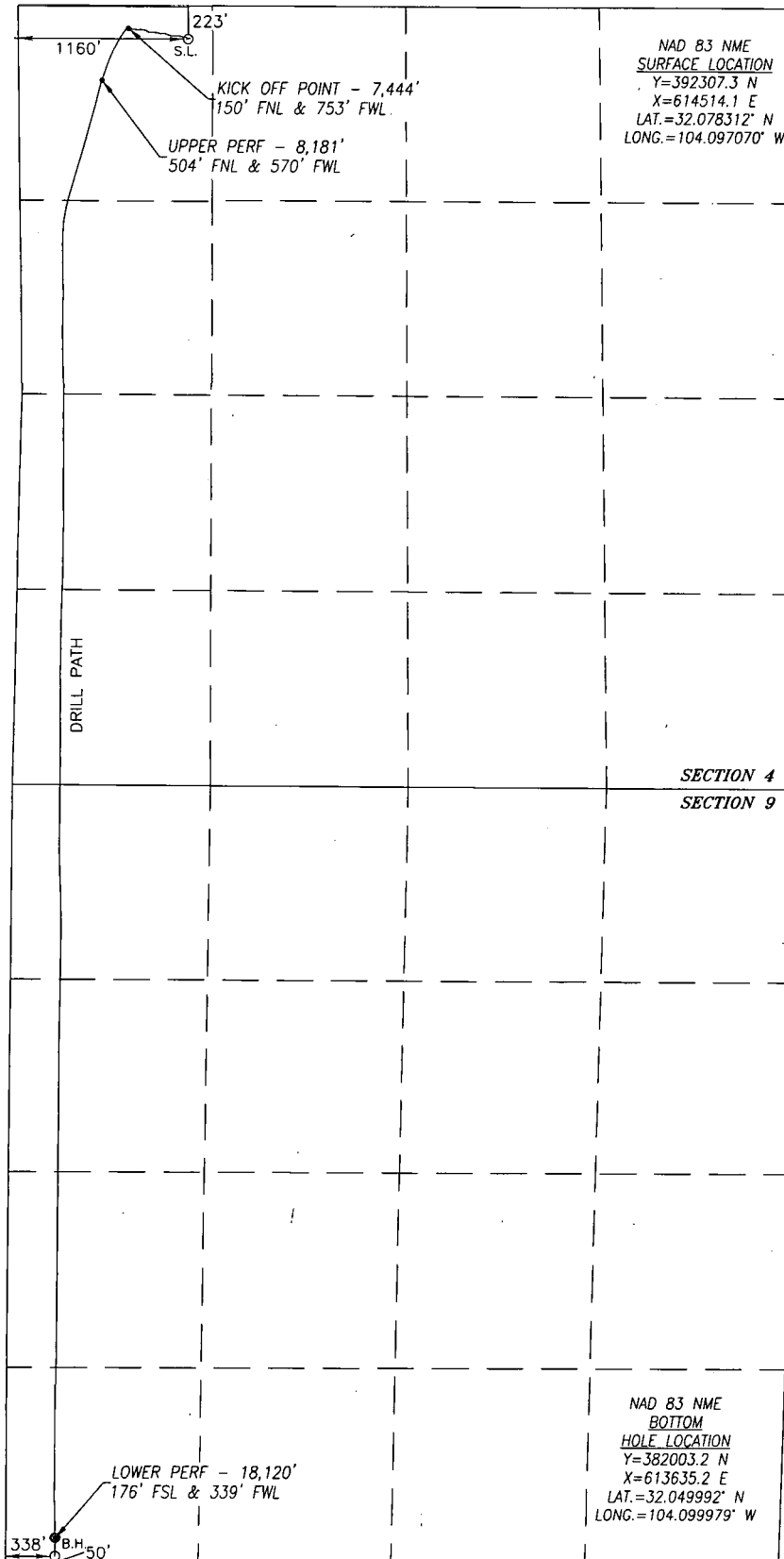
UL or lot No.	Section	Township	Range	Lot Idn	Feet from the	North/South line	Feet from the	East/West line	County
M	9	26-S	28-E		50	SOUTH	338	WEST	EDDY

Dedicated Acres 320	Joint or Infill	Consolidation Code	Order No.
------------------------	-----------------	--------------------	-----------

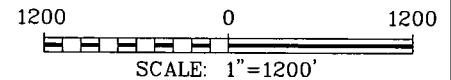
NO ALLOWABLE WILL BE ASSIGNED TO THIS COMPLETION UNTIL ALL INTERESTS HAVE BEEN CONSOLIDATED  
OR A NON-STANDARD UNIT HAS BEEN APPROVED BY THE DIVISION

SEE PAGE 2

Property Code 323005	Property Name SRO 4 STATE COM	Well Number 503H
OGRID No. 229137	Operator Name COG OPERATING, LLC	Elevation 2990.2'



BOREPATH SHOWN HEREON IS BASED ON  
DIRECTIONAL SURVEY REPORT PROVIDED BY  
COG OPERATING, LLC FOR THE SRO 4 STATE  
COM #503H SUPPLIED TO HARCROW SURVEYING,  
LLC ON SEPTEMBER 24, 2019



#### OPERATOR CERTIFICATION

I hereby certify that the information  
herein is true and complete to the best of  
my knowledge and belief, and that this  
organization either owns a working interest  
or unleased mineral interest in the land  
including the proposed bottom hole location  
or has a right to drill this well at this  
location pursuant to a contract with an  
owner of such mineral or working interest,  
or to a voluntary pooling agreement or a  
compulsory pooling order heretofore entered  
by the division.

*Amanda Avery* 10/29/19  
Signature Date

Amanda Avery  
Printed Name

aavery@concho.com  
E-mail Address

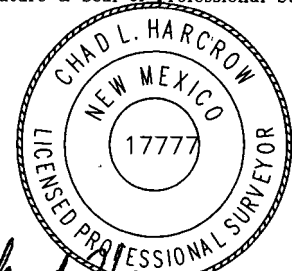
#### SURVEYOR CERTIFICATION

I hereby certify that the well location  
shown on this plat was plotted from field  
notes of actual surveys made by me or  
under my supervision, and that the same is  
true and correct to the best of my belief.

NOV. 2, 2018/MAR. 11, 2019

Date of Survey/Date of Geographic Survey

Signature & Seal of Professional Surveyor



*Chad Harcrow* 9/27/19  
Certificate No. CHAD HARCROW 17777

Submit To Appropriate District Office Two Copies District I 1625 N. French Dr., Hobbs, NM 88240 District II 811 S. First St., Artesia, NM 88210 District III 1000 Rio Brazos Rd., Aztec, NM 87410 District IV 1220 S. St. Francis Dr., Santa Fe, NM 87505		<b>RECEIVED</b> <b>NOV 19 2019</b> State of New Mexico Energy, Minerals and Natural Resources Oil Conservation Division 300 South St. Francis Dr. Santa Fe, NM 87505		Form C-105 Revised April 3, 2017	
		1. WELL API NO. 30-015-45549		2. Type of Lease <input checked="" type="checkbox"/> STATE <input type="checkbox"/> FEE <input type="checkbox"/> FED/INDIAN	
		3. State Oil & Gas Lease No.		5. Lease Name or Unit Agreement Name SRO 4 State Com	
<b>WELL COMPLETION OR RECOMPLETION REPORT AND LOG</b>					
4. Reason for filing:  <input checked="" type="checkbox"/> <b>COMPLETION REPORT</b> (Fill in boxes #1 through #31 for State and Fee wells only)  <input type="checkbox"/> <b>C-144 CLOSURE ATTACHMENT</b> (Fill in boxes #1 through #9, #15 Date Rig Released and #32 and/or #33; attach this and the plat to the C-144 closure report in accordance with 19.15.17.13.K NMAC)		6. Well Number:  503H			
7. Type of Completion: <input checked="" type="checkbox"/> NEW WELL <input type="checkbox"/> WORKOVER <input type="checkbox"/> DEEPENING <input type="checkbox"/> PLUGBACK <input type="checkbox"/> DIFFERENT RESERVOIR <input type="checkbox"/> OTHER					
8. Name of Operator COG Operating LLC			9. OGRID 229137		
10. Address of Operator 2208 W. Main Street Artesia, NM 88210			11. Pool name or Wildcat Delaware River; Bone Spring		
12. Location	Unit Ltr	Section	Township	Range	Lot
Surface:	D	4	26S	28E	
BH:	M	9	26S	28E	
12. Location	Unit Ltr	Section	Township	Range	Lot
Surface:	D	4	26S	28E	
BH:	M	9	26S	28E	
12. Location	Unit Ltr	Section	Township	Range	Lot
Surface:	D	4	26S	28E	
BH:	M	9	26S	28E	
12. Location	Unit Ltr	Section	Township	Range	Lot
Surface:	D	4	26S	28E	
BH:	M	9	26S	28E	
12. Location	Unit Ltr	Section	Township	Range	Lot
Surface:	D	4	26S	28E	
BH:	M	9	26S	28E	
12. Location	Unit Ltr	Section	Township	Range	Lot
Surface:	D	4	26S	28E	
BH:	M	9	26S	28E	
12. Location	Unit Ltr	Section	Township	Range	Lot
Surface:	D	4	26S	28E	
BH:	M	9	26S	28E	
12. Location	Unit Ltr	Section	Township	Range	Lot
Surface:	D	4	26S	28E	
BH:	M	9	26S	28E	
12. Location	Unit Ltr	Section	Township	Range	Lot
Surface:	D	4	26S	28E	
BH:	M	9	26S	28E	
12. Location	Unit Ltr	Section	Township	Range	Lot
Surface:	D	4	26S	28E	
BH:	M	9	26S	28E	
12. Location	Unit Ltr	Section	Township	Range	Lot
Surface:	D	4	26S	28E	
BH:	M	9	26S	28E	
12. Location	Unit Ltr	Section	Township	Range	Lot
Surface:	D	4	26S	28E	
BH:	M	9	26S	28E	
12. Location	Unit Ltr	Section	Township	Range	Lot
Surface:	D	4	26S	28E	
BH:	M	9	26S	28E	
12. Location	Unit Ltr	Section	Township	Range	Lot
Surface:	D	4	26S	28E	
BH:	M	9	26S	28E	
12. Location	Unit Ltr	Section	Township	Range	Lot
Surface:	D	4	26S	28E	
BH:	M	9	26S	28E	
12. Location	Unit Ltr	Section	Township	Range	Lot
Surface:	D	4	26S	28E	
BH:	M	9	26S	28E	
12. Location	Unit Ltr	Section	Township	Range	Lot
Surface:	D	4	26S	28E	
BH:	M	9	26S	28E	
12. Location	Unit Ltr	Section	Township	Range	Lot
Surface:	D	4	26S	28E	
BH:	M	9	26S	28E	
12. Location	Unit Ltr	Section	Township	Range	Lot
Surface:	D	4	26S	28E	
BH:	M	9	26S	28E	
12. Location	Unit Ltr	Section	Township	Range	Lot
Surface:	D	4	26S	28E	
BH:	M	9	26S	28E	
12. Location	Unit Ltr	Section	Township	Range	Lot
Surface:	D	4	26S	28E	
BH:	M	9	26S	28E	
12. Location	Unit Ltr	Section	Township	Range	Lot
Surface:	D	4	26S	28E	
BH:	M	9	26S	28E	
12. Location	Unit Ltr	Section	Township	Range	Lot
Surface:	D	4	26S	28E	
BH:	M	9	26S	28E	
12. Location	Unit Ltr	Section	Township	Range	Lot
Surface:	D	4	26S	28E	
BH:	M	9	26S	28E	
12. Location	Unit Ltr	Section	Township	Range	Lot
Surface:	D	4	26S	28E	
BH:	M	9	26S	28E	
12. Location	Unit Ltr	Section	Township	Range	Lot
Surface:	D	4	26S	28E	
BH:	M	9	26S	28E	
12. Location	Unit Ltr	Section	Township	Range	Lot
Surface:	D	4	26S	28E	
BH:	M	9	26S	28E	
12. Location	Unit Ltr	Section	Township	Range	Lot
Surface:	D	4	26S	28E	
BH:	M	9	26S	28E	
12. Location	Unit Ltr	Section	Township	Range	Lot
Surface:	D	4	26S	28E	
BH:	M	9	26S	28E	
12. Location	Unit Ltr	Section	Township	Range	Lot
Surface:	D	4	26S	28E	
BH:	M	9	26S	28E	
12. Location	Unit Ltr	Section	Township	Range	Lot
Surface:	D	4	26S	28E	
BH:	M	9	26S	28E	
12. Location	Unit Ltr	Section	Township	Range	Lot
Surface:	D	4	26S	28E	
BH:	M	9	26S	28E	
12. Location	Unit Ltr	Section	Township	Range	Lot
Surface:	D	4	26S	28E	
BH:	M	9	26S	28E	
12. Location	Unit Ltr	Section	Township	Range	Lot
Surface:	D	4	26S	28E	
BH:	M	9	26S	28E	
12. Location	Unit Ltr	Section	Township	Range	Lot
Surface:	D	4	26S	28E	
BH:	M	9	26S	28E	
12. Location	Unit Ltr	Section	Township	Range	Lot
Surface:	D	4	26S	28E	
BH:	M	9	26S	28E	
12. Location	Unit Ltr	Section	Township	Range	Lot
Surface:	D	4	26S	28E	
BH:	M	9	26S	28E	
12. Location	Unit Ltr	Section	Township	Range	Lot
Surface:	D	4	26S	28E	
BH:	M	9	26S	28E	
12. Location	Unit Ltr	Section	Township	Range	Lot
Surface:	D	4	26S	28E	
BH:	M	9	26S	28E	
12. Location	Unit Ltr	Section	Township	Range	Lot
Surface:	D	4	26S	28E	
BH:	M	9	26S	28E	
12. Location	Unit Ltr	Section	Township	Range	Lot
Surface:	D	4	26S	28E	
BH:	M	9	26S	28E	
12. Location	Unit Ltr	Section	Township	Range	Lot
Surface:	D	4	26S	28E	
BH:	M	9	26S	28E	
12. Location	Unit Ltr	Section	Township	Range	Lot
Surface:	D	4	26S	28E	
BH:	M	9	26S	28E	
12. Location	Unit Ltr	Section	Township	Range	Lot
Surface:	D	4	26S	28E	
BH:	M	9	26S	28E	
12. Location	Unit Ltr	Section	Township	Range	Lot
Surface:	D	4	26S	28E	
BH:	M	9	26S	28E	
12. Location	Unit Ltr	Section	Township	Range	Lot
Surface:	D	4	26S	28E	
BH:	M	9	26S	28E	
12. Location	Unit Ltr	Section	Township	Range	Lot
Surface:	D	4	26S	28E	
BH:	M	9	26S	28E	
12. Location	Unit Ltr	Section	Township	Range	Lot
Surface:	D	4	26S	28E	
BH:	M	9	26S	28E	
12. Location	Unit Ltr	Section	Township	Range	Lot
Surface:	D	4	26S	28E	
BH:	M	9	26S	28E	
12. Location	Unit Ltr	Section	Township	Range	Lot
Surface:	D	4	26S	28E	
BH:	M	9	26S	28E	
12. Location	Unit Ltr	Section	Township	Range	Lot
Surface:	D	4	26S	28E	
BH:	M	9	26S	28E	
12. Location	Unit Ltr	Section	Township	Range	Lot
Surface:	D	4	26S	28E	
BH:	M	9	26S	28E	
12. Location	Unit Ltr	Section	Township	Range	Lot
Surface:	D	4	26S	28E	
BH:	M	9	26S	28E	
12. Location	Unit Ltr	Section	Township	Range	Lot
Surface:	D	4	26S	28E	
BH:	M	9	26S	28E	
12. Location	Unit Ltr	Section	Township	Range	Lot
Surface:	D	4	26S	28E	
BH:	M	9	26S	28E	
12. Location	Unit Ltr	Section	Township	Range	Lot
Surface:	D	4	26S	28E	
BH:	M	9	26S	28E	
12. Location	Unit Ltr	Section	Township	Range	Lot
Surface:	D	4	26S	28E	
BH:	M	9	26S	28E	
12. Location	Unit Ltr	Section	Township	Range	Lot
Surface:	D	4	26S	28E	
BH:	M	9	26S	28E	
12. Location	Unit Ltr	Section	Township	Range	Lot
Surface:	D	4	26S	28E	
BH:	M	9	26S	28E	
12. Location	Unit Ltr	Section	Township	Range	Lot
Surface:	D	4	26S	28E	
BH:	M	9	26S	28E	
12. Location	Unit Ltr	Section	Township	Range	Lot
Surface:	D	4	26S	28E	
BH:	M	9	26S	28E	
12. Location	Unit Ltr	Section	Township	Range	Lot
Surface:	D	4	26S	28E	
BH:	M	9	26S	28E	
12. Location	Unit Ltr	Section	Township	Range	Lot
Surface:	D	4	26S	28E	
BH:	M	9	26S	28E	
12. Location	Unit Ltr	Section	Township	Range	Lot
Surface:	D	4	26S	28E	
BH:	M	9	26S	28E	
12. Location	Unit Ltr	Section	Township	Range	Lot
Surface:	D	4	26S	28E	
BH:	M	9	26S	28E	
12. Location	Unit Ltr	Section	Township	Range	Lot
Surface:	D	4	26S	28E	
BH:	M	9	26S	28E	
12. Location	Unit Ltr	Section	Township	Range	Lot
Surface:	D	4	26S	28E	
BH:	M	9	26S	28E	
12. Location	Unit Ltr	Section	Township	Range	Lot
Surface:	D	4	26S	28E	
BH:	M	9	26S	28E	
12. Location	Unit Ltr	Section	Township	Range	Lot
Surface:	D	4	26S	28E	
BH:	M	9	26S	28E	
12. Location	Unit Ltr	Section	Township	Range	Lot
Surface:	D	4	26S	28E	
BH:	M	9	26S	28E	
12. Location	Unit Ltr	Section	Township	Range	Lot
Surface:	D	4	26S	28E	
BH:	M	9	26S	28E	
12. Location	Unit Ltr	Section	Township	Range	Lot
Surface:	D	4	26S	28E	
BH:	M	9	26S	28E	
12. Location	Unit Ltr	Section	Township	Range	Lot
Surface:	D	4	26S	28E	
BH:	M	9	26S	28E	
12. Location	Unit Ltr	Section	Township	Range	Lot
Surface:	D	4	26S	28E	
BH:	M	9			

# INSTRUCTIONS

This form is to be filed with the appropriate District Office of the Division not later than 20 days after the completion of any newly-drilled or deepened well and not later than 60 days after completion of closure. When submitted as a completion report, this shall be accompanied by one copy of all electrical and radio-activity logs run on the well and a summary of all special tests conducted, including drill stem tests. All depths reported shall be measured depths. In the case of directionally drilled wells, true vertical depths shall also be reported. For multiple completions, items 11, 12 and 26-31 shall be reported for each zone.

INDICATE FORMATION TOPS IN CONFORMANCE WITH GEOGRAPHICAL SECTION OF STATE

Southeastern New Mexico			Northwestern New Mexico	
T. Rslr	T. Canyon		T. Ojo Alamo	T. Penn A"
T. Salt	T. Strawn		T. Kirtland	T. Penn. "B"
B. Salt	T. Atoka		T. Fruitland	T. Penn. "C"
T. Yates	T. Miss		T. Pictured Cliffs	T. Penn. "D"
T. 7 Rivers	T. Devonian		T. Cliff House	T. Leadville
T. Queen	T. Silurian		T. Menefee	T. Madison
T. Grayburg	T. Montoya		T. Point Lookout	T. Elbert
T. San Andres	T. Rustler		T. Mancos	T. McCracken
T. Glorieta	T. Lamar	2420'	T. Gallup	T. Ignacio Otzte
T. Paddock	T. Bell Canyon	2454'	Base Greenhorn	T. Granite
T. Blinebry	T. Cherry Canyon	3293'	T. Dakota	
T. Tubb	T. Brushy Canyon	4549'	T. Morrison	
T. Drinkard	T. Bone Spring GL	6140'	T. Todilto	
T. Abo	T. 1 <sup>st</sup> Bone Spring	7051'	T. Entrada	
T. Wolfcamp	T. 2 <sup>nd</sup> Bone Spring- Sand		T. Wingate	
T. Penn	T. 2nd Bone Spring	7832'	T. Chinle	
T. Cisco (Bough C)	T. 3 <sup>rd</sup> Bone Spring		T. Permian	

## OIL OR GAS SANDS OR ZONES

No. 1, from.....to.....

No. 2, from.....to.....

No. 3, from.....to.....

No. 4, from.....to.....

## IMPORTANT WATER SANDS

Include data on rate of water inflow and elevation to which water rose in hole.

No. 1, from.....to.....feet.....

No. 2, from.....to.....feet.....

No. 3, from.....to.....feet.....

## LITHOLOGY RECORD (Attach additional sheet if necessary)

From	To	Thickness In Feet	Lithology

From	To	Thickness In Feet	Lithology