

**District I**  
1625 N. French Dr., Hobbs, NM 88240  
Phone: (575) 393-6161 Fax: (575) 393-0720  
**District II**  
811 S. First St., Artesia, NM 88210  
Phone: (575) 748-1283 Fax: (575) 748-9720  
**District III**  
1000 Rio Brazos Road, Aztec, NM 87410  
Phone: (505) 334-6178 Fax: (505) 334-6170  
**District IV**  
1220 S. St. Francis Dr., Santa Fe, NM 87505  
Phone: (505) 476-3460 Fax: (505) 476-3462

State of New Mexico  
Energy, Minerals & Natural Resources Department  
**OIL CONSERVATION DIVISION**  
1220 South St. Francis Dr.  
Santa Fe, NM 87505

RECEIVED

Form C-102  
Revised August 1, 2011

Submit one copy to  
appropriate District Office

DISTRICT IV-ARTESIA O.C.D.

☐ AMENDED REPORT

**WELL LOCATION AND ACREAGE DEDICATION PLAT**

<sup>1</sup> API Number <b>30-015-46580</b>	<sup>2</sup> Pool Code <b>96857 *</b>	<sup>3</sup> Pool Name <b>LAGUNA SALADO:BONE SPRING</b>
<sup>4</sup> Property Code <b>326778</b>	<sup>5</sup> Property Name <b>PAPAS FRITAS 27-22 FED COM</b>	<sup>6</sup> Well Number <b>331H</b>
<sup>7</sup> OGRID No. <b>6137</b>	<sup>8</sup> Operator Name <b>DEVON ENERGY PRODUCTION COMPANY, L.P.</b>	<sup>9</sup> Elevation <b>3021.6'</b>

**Surface Location**

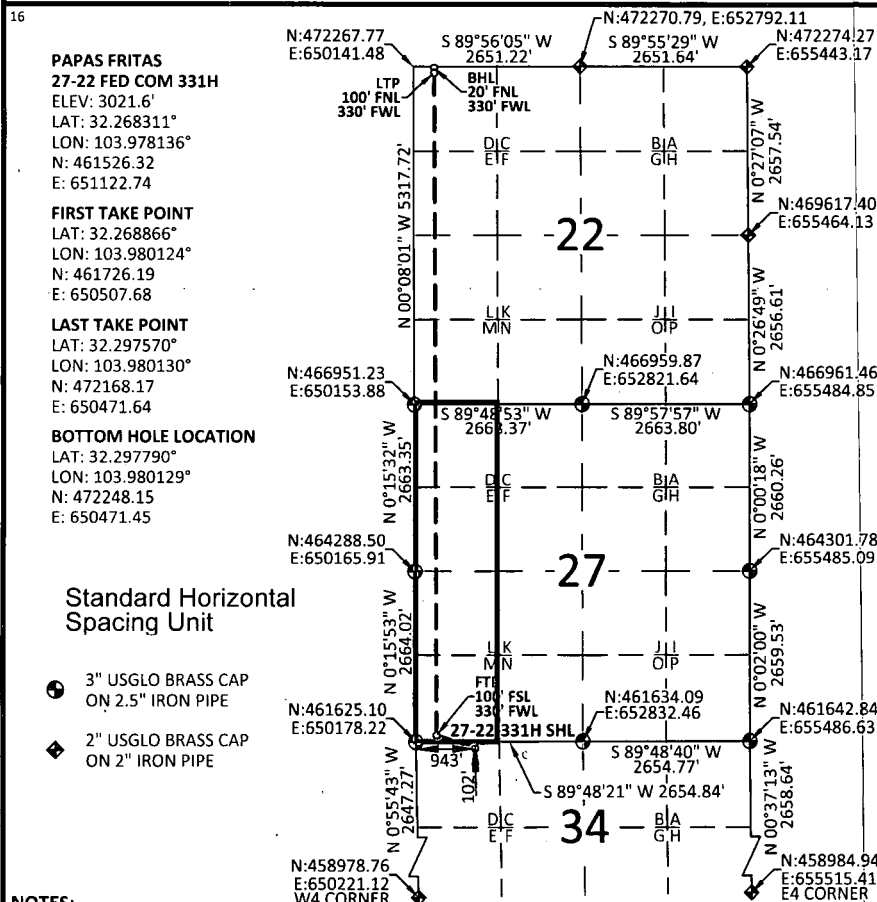
UL or lot no.	Section	Township	Range	Lot Idn	Feet from the	North/South line	Feet from the	East/West line	County
D	34	23-S	29-E		102	NORTH	943	WEST	EDDY

**Bottom Hole Location If Different From Surface**

UL or lot no.	Section	Township	Range	Lot Idn	Feet from the	North/South line	Feet from the	East/West line	County
D	22	23-S	29-E		20	NORTH	330	WEST	EDDY

<sup>12</sup> Dedicated Acres <b>160</b>	<sup>13</sup> Joint or Infill	<sup>14</sup> Consolidation Code	<sup>15</sup> Order No.
---	-------------------------------	----------------------------------	-------------------------

No allowable will be assigned to this completion until all interests have been consolidated or a non-standard unit has been approved by the division.



**NOTES:**

- BEARINGS SHOWN ARE GRID BASED ON THE NEW MEXICO STATE PLANE EAST ZONE COORDINATE SYSTEM (3001), NAD 83 (2011), BASED FROM GPS OBSERVATIONS, OCCUPYING A WHS CONTROL POINT (5/8" REBAR), LOCATED AT NORTH: 456034.443, EAST: 653560.641, ELEVATION: 3101.373, DETERMINED BY AN OPUS SOLUTION ON DECEMBER 3RD, 2018.
- DISTANCES DEPICTED HEREON ARE REPORTED AS GROUND DISTANCE IN US SURVEY FEET USING A COMBINED SCALE FACTOR OF 1.000220979
- ELEVATIONS ARE OF NAVD 88 COMPUTED USING GEOID 128.

**17 OPERATOR CERTIFICATION**

I hereby certify that the information contained herein is true and complete to the best of my knowledge and belief, and that this organization either owns a working interest or unleased mineral interest in the land including the proposed bottom hole location or has a right to drill this well at this location pursuant to a contract with an owner of such a mineral or working interest, or to a voluntary pooling agreement or a compulsory pooling order heretofore entered by the division.

*Erin Workman* 06/14/19  
Signature Date

Erin Workman

Printed Name

Erin.workman@dvn.com

E-mail Address

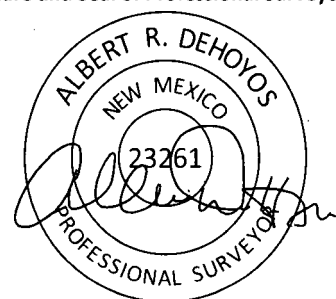
**18 SURVEYOR CERTIFICATION**

I hereby certify that the well location shown on this plat was plotted from field notes of actual surveys made by me or under my supervision, and that the same is true and correct to the best of my belief.

03/06/2019

Date of Survey

Signature and Seal of Professional Surveyor:



Certificate No. 23261

Albert Dehoyos

Drawn by: TMW

Checked by: ARD

Date: 04/29/2019

Dual Pool

RWP/1-10-2020

RECEIVED

DEC 26 2019

DISTRICT 7 - ARTESIA O.C.D.

Intent ☒ As Drilled ☐

API #

Operator Name:  
DEVON ENERGY PRODUCTION COMPANY, L.P.Property Name:  
PAPAS FRITAS 27-22 FED COMWell Number  
331H

## Kick Off Point (KOP)

UL	Section 27	Township 23S	Range 29-E	Lot	Feet 50	From N/S FSL	Feet 330	From E/W WEST	County EDDY
Latitude 32.268735					Longitude 103.980118			NAD 83	

## First Take Point (FTP)

UL M	Section 27	Township 23-S	Range 29-E	Lot	Feet 100	From N/S SOUTH	Feet 330	From E/W WEST	County EDDY
Latitude 32.268866°					Longitude -103.980124°			NAD 83	

## Last Take Point (LTP)

UL D	Section 22	Township 23-S	Range 29-E	Lot	Feet 100	From N/S NORTH	Feet 330	From E/W WEST	County EDDY
Latitude 32.297570°					Longitude -103.980130°			NAD 83	

Is this well the defining well for the Horizontal Spacing Unit?

☒ Y

Is this well an infill well?

☐ N

If infill is yes provide API if available, Operator name and well number for Defining well for Horizontal Spacing Unit.

API #

Operator Name:

Property Name:

Well Number

KZ 06/29/2018