

RECEIVED

Form C-102

FEB 17 2020

Revised August 1, 2011

District I
1625 N. French Dr., Hobbs, NM 88240
Phone: (575) 393-6161 Fax: (575) 393-0720
District II
811 S. First St., Artesia, NM 88210
Phone: (575) 748-1283 Fax: (575) 748-9720
District III
1000 Rio Brazos Road, Aztec, NM 87410
Phone: (505) 334-6178 Fax: (505) 334-6170
District IV
1220 S. St. Francis Dr., Santa Fe, NM 87505
Phone: (505) 476-3460 Fax: (505) 476-3462

State of New Mexico
Energy, Minerals & Natural Resources Department
OIL CONSERVATION DIVISION
1220 South St. Francis Dr.
Santa Fe, NM 87505

EMNRD-OCDA ARTESIA

Submit one copy to appropriate District Office

AMENDED REPORT

WELL LOCATION AND ACREAGE DEDICATION PLAT

API Number: 30-015-46753
Pool Code: 40295
Pool Name: Los Medanos
Property Code: 327167
Property Name: JAMES RANCH UNIT DI 8 BS3-1W
Well Number: 275H
OGRID No.: 2407371 373075
Operator Name: BOPCO, L.P.
Elevation: 3,317'

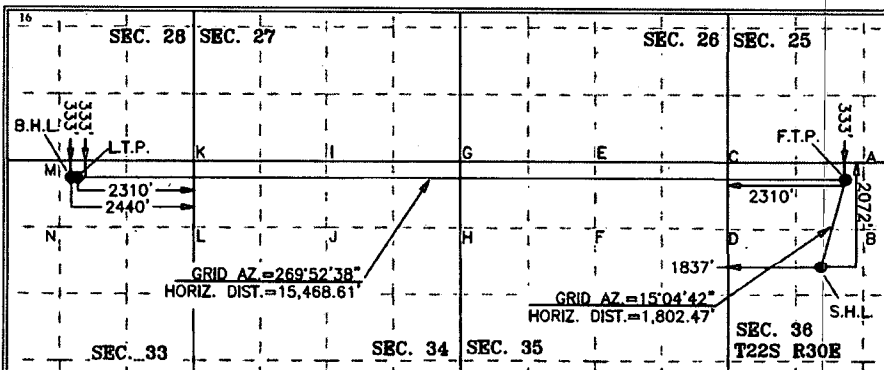
Table with 10 columns: UL or lot no., Section, Township, Range, Lot Idn, Feet from the, North/South line, Feet from the, East/West line, County. Row 1: C, 36, 22 S, 30 E, 2,072, NORTH, 1,837, WEST, EDDY.

Bottom Hole Location If Different From Surface

Table with 10 columns: UL or lot no., Section, Township, Range, Lot Idn, Feet from the, North/South line, Feet from the, East/West line, County. Row 1: B, 33, 22 S, 30 E, 333, NORTH, 2,440, EAST, EDDY.

Dedicated Acres: 480
Joint or Infill:
Consolidation Code:
Order No.:

No allowable will be assigned to this completion until all interests have been consolidated or a non-standard unit has been approved by the division.



OPERATOR CERTIFICATION
I hereby certify that the information contained herein is true and complete to the best of my knowledge and belief...
Signature: Stephanie Rabadue
Date: 5-16-18
Printed Name: Stephanie Rabadue
E-mail Address: stephanie_rabadue@xenergy.com

Geodetic Coordinates and Corner Coordinates Table for NAD 27 NME and NAD 83 NME. Lists X, Y coordinates for various points and corner locations.

SURVEYOR CERTIFICATION
I hereby certify that the well location shown on this plat was plotted from field notes of actual surveys made by me or under my supervision...
Date of Survey: 4-30-2018
Signature and Seal of Professional Surveyor: Mark Dillon Harp
Certificate Number: 23786

LS 2-19-20

Intent As Drilled

API #

Operator Name: XTO PERMIAN OPERATING, LLC	Property Name: JAMES RANCH UNIT DI 8 BS3-1E	Well Number 275H
--	--	---------------------

Kick Off Point (KOP)

UL F	Section 36	Township 22S	Range 30E	Lot	Feet 2072	From N/S NORTH	Feet 1837	From E/W WEST	County EDDY
Latitude 32.350147					Longitude -103.836978			NAD 83	

First Take Point (FTP)

UL C	Section 36	Township 22S	Range 30E	Lot	Feet 333	From N/S NORTH	Feet 2310	From E/W WEST	County EDDY
Latitude 32.354925					Longitude -103.835433			NAD 83	

Last Take Point (LTP)

UL B	Section 330	Township 22S	Range 31E	Lot	Feet 333	From N/S NORTH	Feet 2310	From E/W EAST	County EDDY
Latitude 32.355020					Longitude -103.885106			NAD 83	

Is this well the defining well for the Horizontal Spacing Unit?

Is this well an infill well?

If infill is yes please provide API if available, Operator Name and well number for Defining well for Horizontal Spacing Unit.

API #

Operator Name: XTO PERMIAN OPERATING, LLC	Property Name:	Well Number
--	----------------	-------------