

DISTRICT I
1825 N. French Dr., Hobbs, NM 88240

DISTRICT II
811 South First, Artesia, NM 88210

State of New Mexico
Energy, Minerals and Natural Resources Department

Form C-102
Revised March 17, 1999

Submit to Appropriate District Office
State Lease - 4 Copies
Fee Lease - 3 Copies

DISTRICT III
1000 Rio Brazos Rd., Aztec, NM 87410

DISTRICT IV
2040 South Pacheco, Santa Fe, NM 87506

OIL CONSERVATION DIVISION

2040 South Pacheco
Santa Fe, New Mexico 87504-2088

☐ AMENDED REPORT

WELL LOCATION AND ACREAGE DEDICATION PLAT

API Number 30-015-33161	Pool Code 47545	Pool Name NASH DRAW - DELAWARE / Bone Spring Acreage Survey
Property Code 001796	Property Name POKER LAKE UNIT	Well Number 177
OGRID No. 001801	Operator Name BASS ENTERPRISES PRODUCTION COMPANY	Elevation 3196'

Surface Location

UL or lot No.	Section	Township	Range	Lot Idn	Feet from the	North/South line	Feet from the	East/West line	County
N	6	24 S	30 E		660	SOUTH	1980	WEST	EDDY

Bottom Hole Location If Different From Surface

UL or lot No.	Section	Township	Range	Lot Idn	Feet from the	North/South line	Feet from the	East/West line	County
Dedicated Acres 40	Joint or Infill N	Consolidation Code	Order No.						

NO ALLOWABLE WILL BE ASSIGNED TO THIS COMPLETION UNTIL ALL INTERESTS HAVE BEEN CONSOLIDATED
OR A NON-STANDARD UNIT HAS BEEN APPROVED BY THE DIVISION

LOT 1 - 40.72 ac.				
LOT 2 - 40.58 ac.				
LOT 3 - 40.42 ac.				
LOT 4 - 40.28 ac.				

OPERATOR CERTIFICATION

I hereby certify the the information contained herein is true and complete to the best of my knowledge and belief.

Signature

CINDI GOODMAN

Printed Name

PRODUCTION CLERK

Title

2-2-06

Date

SURVEYOR CERTIFICATION

I hereby certify that the well location shown on this plat was plotted from field notes of actual surveys made by me or under my supervision, and that the same is true and correct to the best of my belief.

March 28, 2001

Date Surveyed

JONES

Signature & Seal of Professional Surveyor

NEW MEXICO

7977

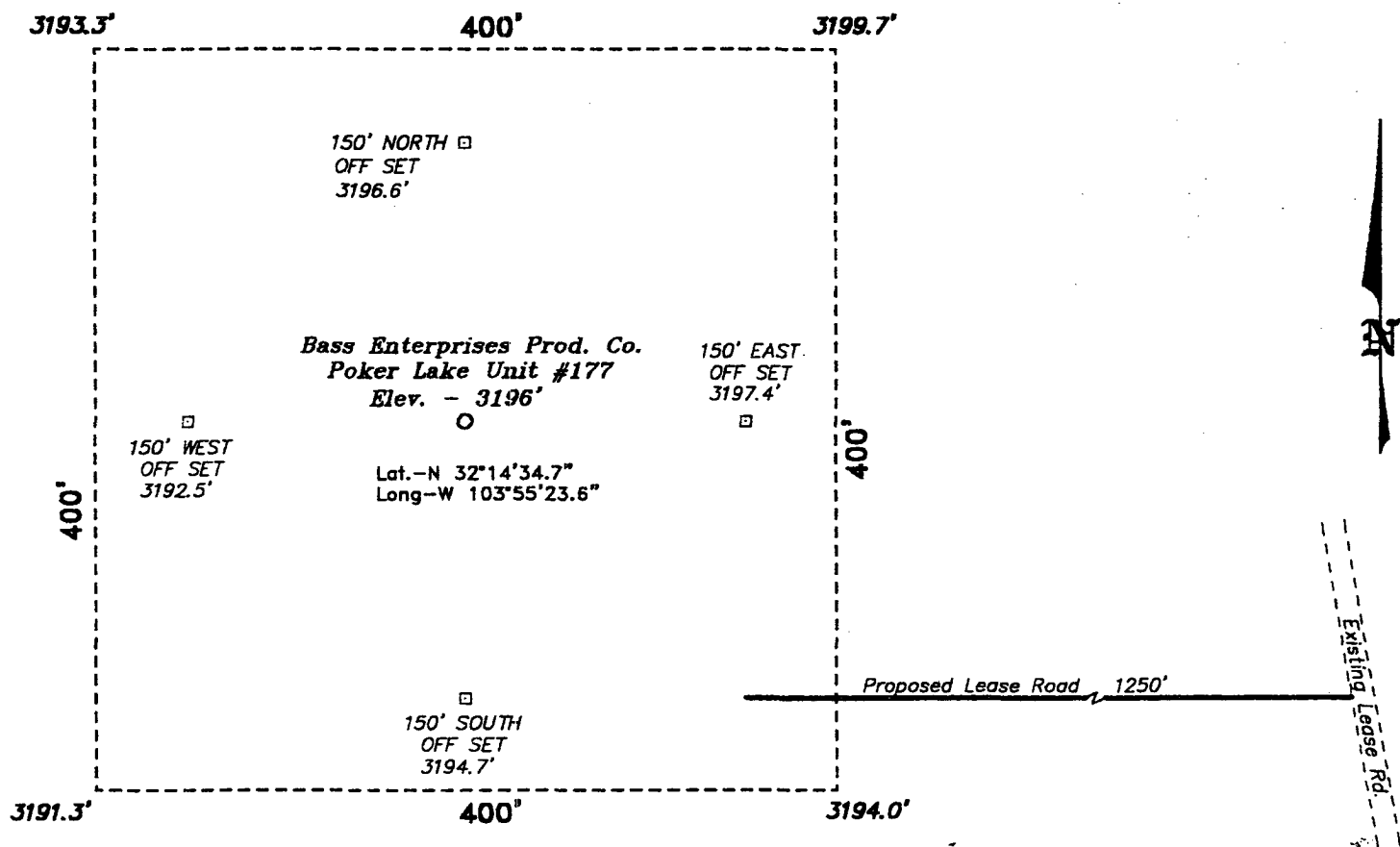
MO. No. 1302

Certified Gary L. Jones 7977

PROFESSIONAL LAND SURVEYOR

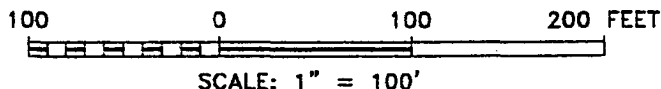
BASS SURVEYS

**SECTION 6, TOWNSHIP 24 SOUTH, RANGE 30 EAST, N.M.P.M.,
EDDY COUNTY, NEW MEXICO.**



DIRECTIONS TO LOCATION:

FROM THE JUNCTION OF STATE HWY 128 & CO. RD. 793, GO SOUTH AND WEST ON CO. RD. 793 APPROX. 4.0 MILES TO A LEASE ROAD; THENCE SOUTH ON LEASE ROAD APPROX. 4 MILES TO A PROPOSED LEASE ROAD.



BASIN SURVEYS P.O. BOX 1786-HOBBS, NEW MEXICO

W.O. Number: 1302 Drawn By: **K. GOAD**

Date: 03-29-2001 Disk: KJG CD#3 - 1302A.DWG

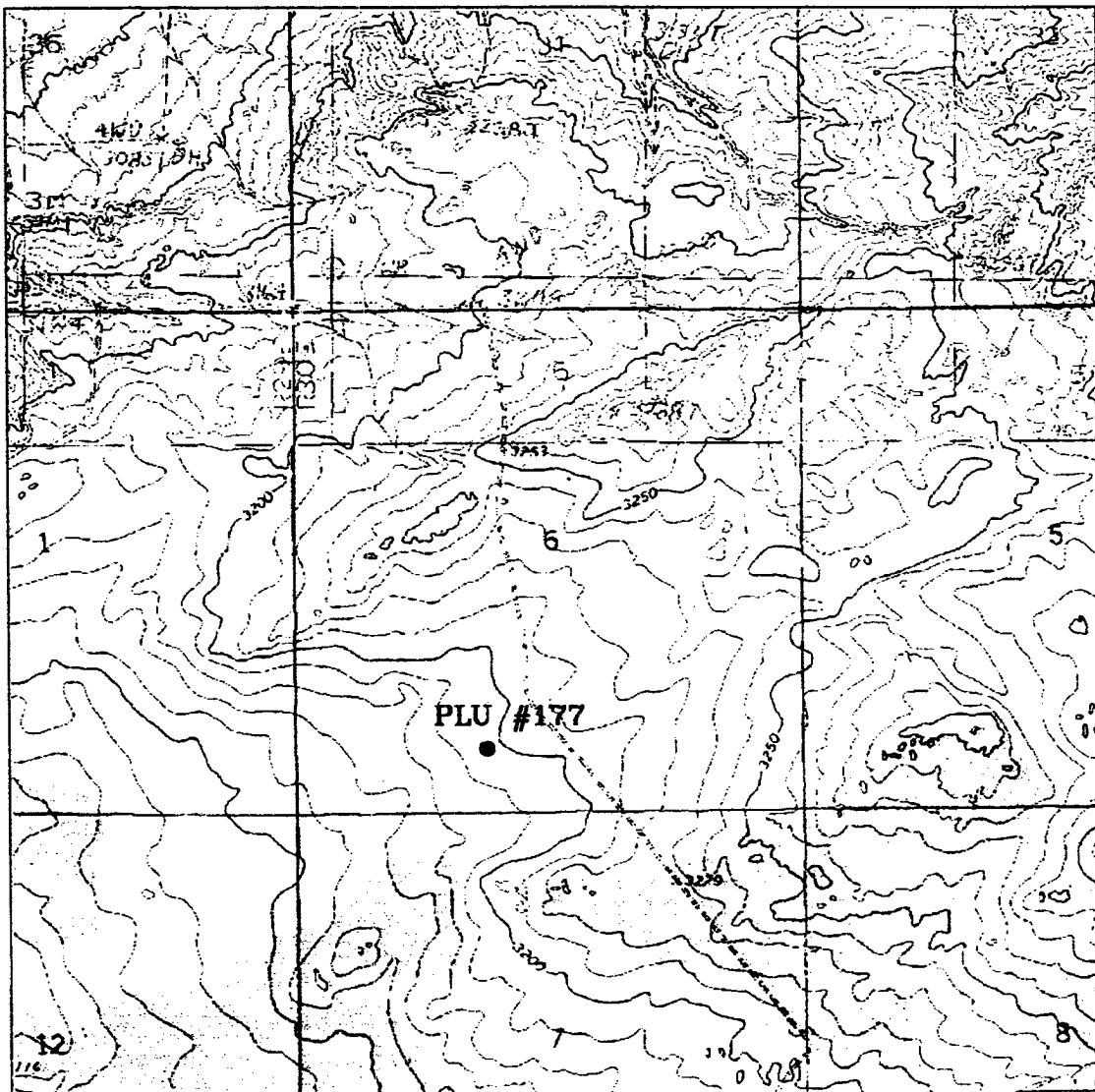
BASS ENTERPRISES PRODUCTION CO.

REF: Poker Lake Unit No. 177 / Well Pad Topo

THE POKER LAKE UNIT No. 177 LOCATED 660' FROM
THE SOUTH LINE AND 1980' FROM THE WEST LINE OF
SECTION 6, TOWNSHIP 24 SOUTH, RANGE 30 EAST,

N.M.P.M., EDDY COUNTY, NEW MEXICO.

Survey Date: 03-28-2001 Sheet 1 of 1 Sheets



POKER LAKE UNIT #177

Located at 660' FSL and 1980' FWL
 Section 6, Township 24 South, Range 30 East,
 N.M.P.M., Eddy County, New Mexico.

**basin
surveys**

focused on excellence
in the oilfield

P.O. Box 1786
 1120 N. West County Rd.
 Hobbs, New Mexico 88241
 (505) 393-7316 - Office
 (505) 392-3074 - Fax
 basinsurveys.com

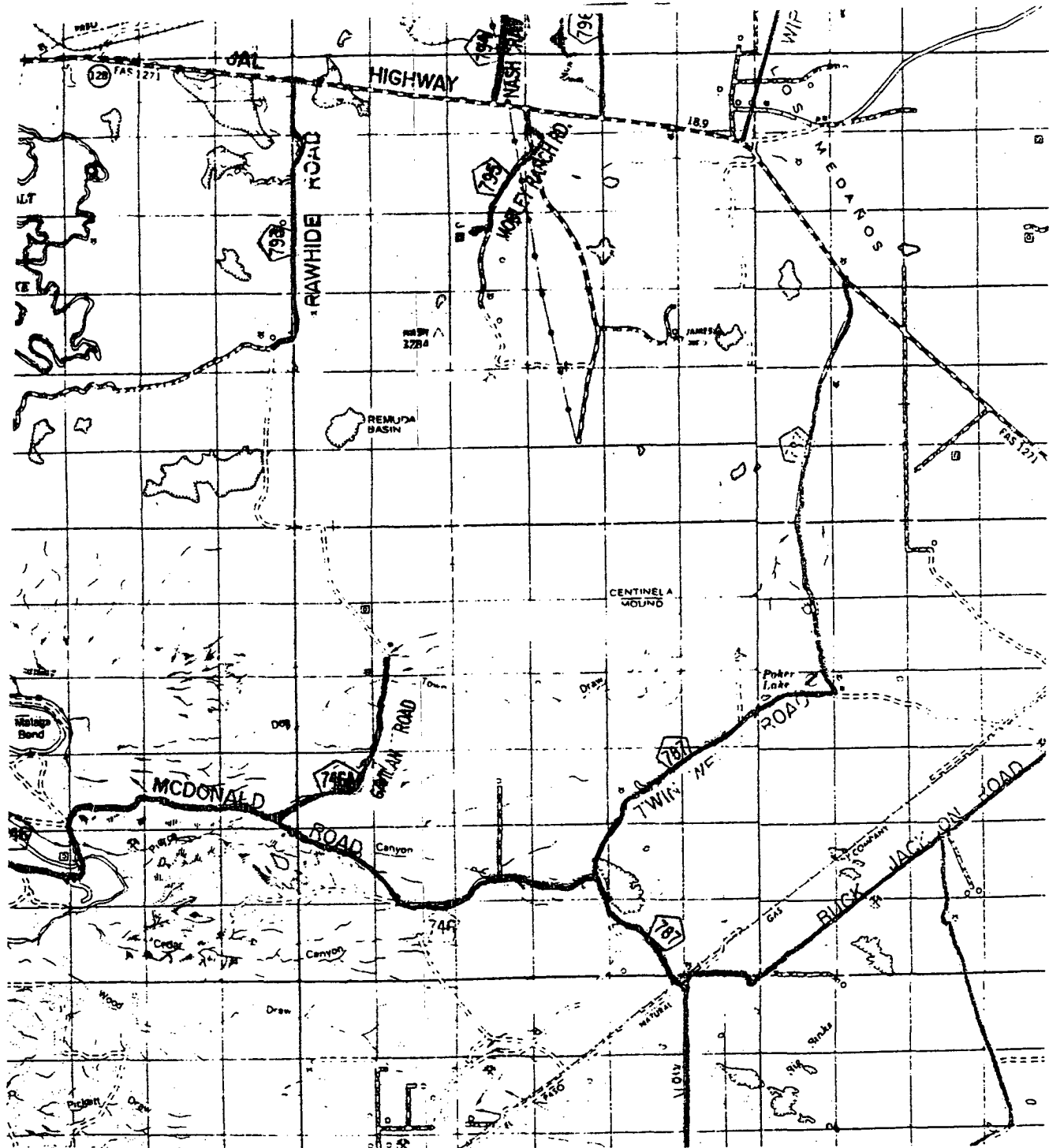
W.O. Number: 1302AA - KJG CD#3

Survey Date: 03-28-2001

Scale: 1" = 2000'

Date: 03-29-2001

**BASS ENTERPRISES
PRODUCTION CO.**



POKER LAKE UNIT #177

Located at 660' FSL and 1980' FWL
 Section 6, Township 24 South, Range 30 East,
 N.M.P.M., Eddy County, New Mexico.

basin
surveys

focused on excellence
 in the oilfield

P.O. Box 1786
 1120 N. West County Rd.
 Hobbs, New Mexico 88241
 (505) 393-7316 - Office
 (505) 392-3074 - Fax
 basinsurveys.com

W.O. Number: 1302AA - KJG CD#3

Survey Date: 03-28-2001

Scale: 1" = 2 MILES

Date: 03-29-2001

BASS ENTERPRISES
PRODUCTION CO.