

439 H

OCD-ARTESIA
SUBMIT IN TRIPPLICATE*
(Other instructions on reverse side)

F-06-45
3/17/06
Form approved.
Budget Bureau No. 1004-0136
Expires August 31, 1985

UNITED STATES
DEPARTMENT OF THE INTERIOR
BUREAU OF LAND MANAGEMENT

APPLICATION FOR PERMIT TO DRILL, DEEPEN, OR PLUG BACK

1a. TYPE OF WORK
DRILL ☒ DEEPEN ☐ PLUG BACK ☐

b. TYPE OF WELL
OIL WELL ☒ GAS WELL ☐ OTHER ☐ SINGLE ZONE ☒ MULTIPLE ZONE ☐

2. NAME OF OPERATOR
BURNETT OIL CO., INC (817/332-5108) 3080

3. ADDRESS OF OPERATOR
801 CHERRY STREET, SUITE 1500, FORT WORTH, TEXAS 76102 Subject to

4. LOCATION OF WELL (Report location clearly and in accordance with any State requirements)
UNIT B, 990' FNL, 2040' FEL SEC 23, T17S, R30E By State
Bottom hole -> 2160' FEL B. W. A
At proposed prod. zone UNIT O, 990' FSL, 2310' FEL -> SEC 14, T17S, R30E
Surface 990.5 + 1980 E

14. DISTANCE IN MILES AND DIRECTION FROM NEAREST TOWN OR POST OFFICE*
APPROXIMATELY 6 MILES EAST OF LOCO HILLS, NEW MEXICO

15. DISTANCE FROM PROPOSED* LOCATION TO NEAREST PROPERTY OR LEASE LINE, FT. (Also to nearest drlg. unit line, if any) 330'

16. NO. OF ACRES IN LEASE 600

17. NO. OF ACRES ASSIGNED TO THIS WELL 80

18. DISTANCE FROM PROPOSED LOCATION* TO NEAREST WELL, DRILLING COMPLETED, OR APPLIED FOR, ON THIS LEASE, FT. 330'

19. PROPOSED DEPTH 5400'

20. ROTARY OR CABLE TOOLS ROTARY

21. ELEVATIONS (Show whether DF, RT, GR, etc.)
3693' GR

22. APPROX. DATE WORK WILL START*
July 1, 2006

5. LEASE DESIGNATION AND SERIAL NO.
NMLC029338A

6. IF INDIAN, ALLOTTEE OR TRIBE NAME
RECEIVED JUN 02 2006

7. UNIT AGREEMENT NAME
OCD-ARTESIA

8. FARM OR LEASE NAME
GISSLER A 2388

9. WELL NO.
#28 API# 30-015-34909

10. FIELD AND POOL, OR WILDCAT
LOCO HILLS PADDOCK

11. SEC., T., R., M., OR BLK. AND SURVEY OR AREA, TOWNSHIP
SEC 14, T17S, R30E

12. COUNTY OR PARISH
EDDY

13. STATE
NM

23. PROPOSED CASING AND CEMENTING PROGRAM

SIZE OF HOLE	SIZE OF CASING	WEIGHT PER FOOT	SETTING DEPTH	QUANTITY OF CEMENT
14 3/4"	9 5/8"	32.30#	+/- 415'	+/-400 Sks (Circ. to Surface)
8 3/4"	7"	23#	5400'	+/-1500 Sks In 2 stages

(If water flows are encountered cementing program may vary.)

A 14 3/4" hole will be drilled to Rustler Anhydrite. We will set 9 5/8" casing @ this depth & cement to surface. After a 18 hour cement wait, casing & BOP will be tested before drill out of the shoe. A 8 3/4" hole will be drilled to approx. 5200' to effectively test the Cedar Lake Yeso interval. The 7" casing will be run and set @ TD and cemented to 600' above highest potential producing horizon. For horizontal wells, that portion of the well will be drilled as recommended by our service company and we will perforate and treat productive intervals as recommended by service company.

7" must be circulated to surface w/ cement.

APPROVAL SUBJECT TO
GENERAL REQUIREMENTS AND
SPECIAL stipulations
ATTACHED

IN ABOVE SPACE DESCRIBE PROPOSED PROGRAM: If proposal is to deepen or plug back, give data on present productive zone and proposed new productive zone. If proposal is to drill or deepen directionally, give pertinent data on subsurface locations and measured and true vertical depths. Give blowout preventer program, if any.

24. SIGNED Stirling Landry TITLE PETROLEUM ENGINEER DATE 3/16/06
(This space for Federal or State office use)

PERMIT NO. _____ APPROVAL DATE _____
APPROVED BY /s/ James Stovall TITLE ACTING FIELD MANAGER DATE JUN 01 2006
CONDITIONS

If earthen pits are used in association with the drilling of this well, an OCD pit permit must be obtained prior to pit construction.

APPROVAL FOR 1 YEAR

Conditions On Reverse Side
knowingly and willfully to make to any department or agency of the representations as to any matter within its jurisdiction.

UNITED STATES
DEPARTMENT OF THE INTERIOR
BUREAU OF LAND MANAGEMENT

OCD-ARTESIA

FORM APPROVED
OMB No. 1004-0135
Expires July 31, 1996

SUNDRY NOTICES AND REPORTS ON WELLS

Do not use this form for proposals to drill or to re-enter an abandoned well. Use Form 3160-3 (APD) for such proposals.

SUBMIT IN TRIPLICATE - Other Instructions on reverse side

1. Type of Well

☒ Oil Well ☐ Gas Well ☐ Other

2. Name of Operator

BURNETT OIL CO., INC.

3a. Address 801 CHERRY STREET, SUITE 1500

3b. Phone No. (include area code)

UNIT #9 FORT WORTH, TX 76102-6881

(817)/332-5108

4. Location of Well (Footage, Sec., T., R., M., or Survey Description)

****SURFACE- UNIT O, 990' FSL, 1980' FEL, SEC 14, T17S, R30E

BTM HOLE UNIT B, 990' FNL, 2160' FEL SEC 23, T17S, R30E

5. Lease Serial No.
NMLC029338A

6. If Indian, Allottee or Tribe Name

7. If Unit or CA/Agreement, Name and/or No.

8. Well Name and No.

GISSLER A #28H

9. API Well No.

30-015- S1

10. Field and Pool, or Exploratory Area
LOCO HILLS PADDOCK

11. County or Parish, State

Eddy County, N.M.

12. CHECK APPROPRIATE BOX(ES) TO INDICATE NATURE OF NOTICE, REPORT, OR OTHER DATA

TYPE OF SUBMISSION

TYPE OF ACTION

☒ Notice of Intent☐ Subsequent Report☐ Final Abandonment Notice☐ Acidize☐ Alter Casing☐ Casing Repair☒ Change Plans☐ Convert to Injection☐ Deepen☐ Fracture Treat☐ New Construction☐ Plug and Abandon☐ Plug Back☐ Production (Start/Resume)☐ Reclamation☐ Recomplete☐ Temporarily Abandon☐ Water Disposal☐ Water Shut-Off☐ Well Integrity☒ Other **ALTER LOCATION**

13. Describe Proposed or Completed Operation (clearly state all pertinent details, including estimated starting date of any proposed work and approximate duration thereof. If the proposal is to deepen directionally or recompleat horizontally, give subsurface locations and measured and true vertical depths of all pertinent markers and zones. Attach the Bond under which the work will be performed or provide the Bond No. on file with BLM/BIA. Required subsequent reports shall be filed within 30 days following completion of the involved operations. If the operation results in a multiple completion or recompleat in a new interval, a Form 3160-4 shall be filed once testing has been completed. Final Abandonment Notices shall be filed only after all requirements, including reclamation, have been completed, and the operator has determined that the site is ready for final inspection.)

TO AVOID ANY DETRIMENTAL AFFECTS BECAUSE OF TWO ARCHAEOLOGICAL SITES FOUND DURING THE SURVEY FOR THIS WELL, WE CHOSE TO TURN THE LOCATION SO THE SURFACE SITE IS FARTHER FROM THE ARCH. SITES. THE NEW SURFACE WELL LOCATION IS UNIT O, 990' FSL, 1980' FEL OF SECTION 14, T17S, R30E FO EDDY COUNTY, NEW MEXICO. THE NEW BOTTOM HOLE LOCATION IS UNIT B, 990' FNL, 2160' FEL OF SEC. 23, T17S, R30E. THE FLOWLINE WILL ONLY BE 612' IN SECTION 14 TO THE EXISTING GISSLER A2 BATTERY. NEW PLATS AND C102 EXHIBITS A, B AND C ARE ATTACHED

14. I hereby certify that the foregoing is true and correct
Name (Printed/Typed)

STERLING RANDOLPH

Title

PETROLEUM ENGINEER

Signature

Date

5/23/2006

THIS SPACE FOR FEDERAL OR STATE OFFICE USE

Approved by

/s/ James Stovall

ACTING

FIELD MANAGER

Date

JUN 01 2006

Conditions of approval, if any, are attached. Approval of this notice does not warrant or certify that the applicant holds legal or equitable title to those rights in the subject lease which would entitle the applicant to conduct operations thereon.

Office

CARLSBAD FIELD OFFICE

Title 18 U.S.C. Section 1001, makes it a crime for any person knowingly and willfully to make to any department or agency of the United States any false, fictitious or fraudulent statements or representations as to any matter within its jurisdiction.

(Instructions on reverse)

DISTRICT I

1625 N. FRENCH DR., HOBBS, NM 88240

State of New Mexico

Energy, Minerals and Natural Resources Department

Form C-102

Revised October 12, 2005

Submit to Appropriate District Office

State Lease - 4 Copies

Fee Lease - 3 Copies

DISTRICT II

1301 W. GRAND AVENUE, ARTESIA, NM 88210

OIL CONSERVATION DIVISION

1220 SOUTH ST. FRANCIS DR.

Santa Fe, New Mexico 87505

DISTRICT III

1000 Rio Brazos Rd., Aztec, NM 87410

DISTRICT IV

1220 S. ST. FRANCIS DR., SANTA FE, NM 87505

WELL LOCATION AND ACREAGE DEDICATION PLAT

☐ AMENDED REPORT

API Number 30-015-	Pool Code 96718	Pool Name LOCO HILLS PADDOCK
Property Code 002388	Property Name GISSLER A	Well Number 28H
OGRID No. 003080	Operator Name BURNETT OIL COMPANY	Elevation 3680'

Surface Location

UL or lot No.	Section	Township	Range	Lot Idn	Feet from the	North/South line	Feet from the	East/West line	County
0	14	17-S	30-E		990	SOUTH	1980	EAST	EDDY

Bottom Hole Location If Different From Surface

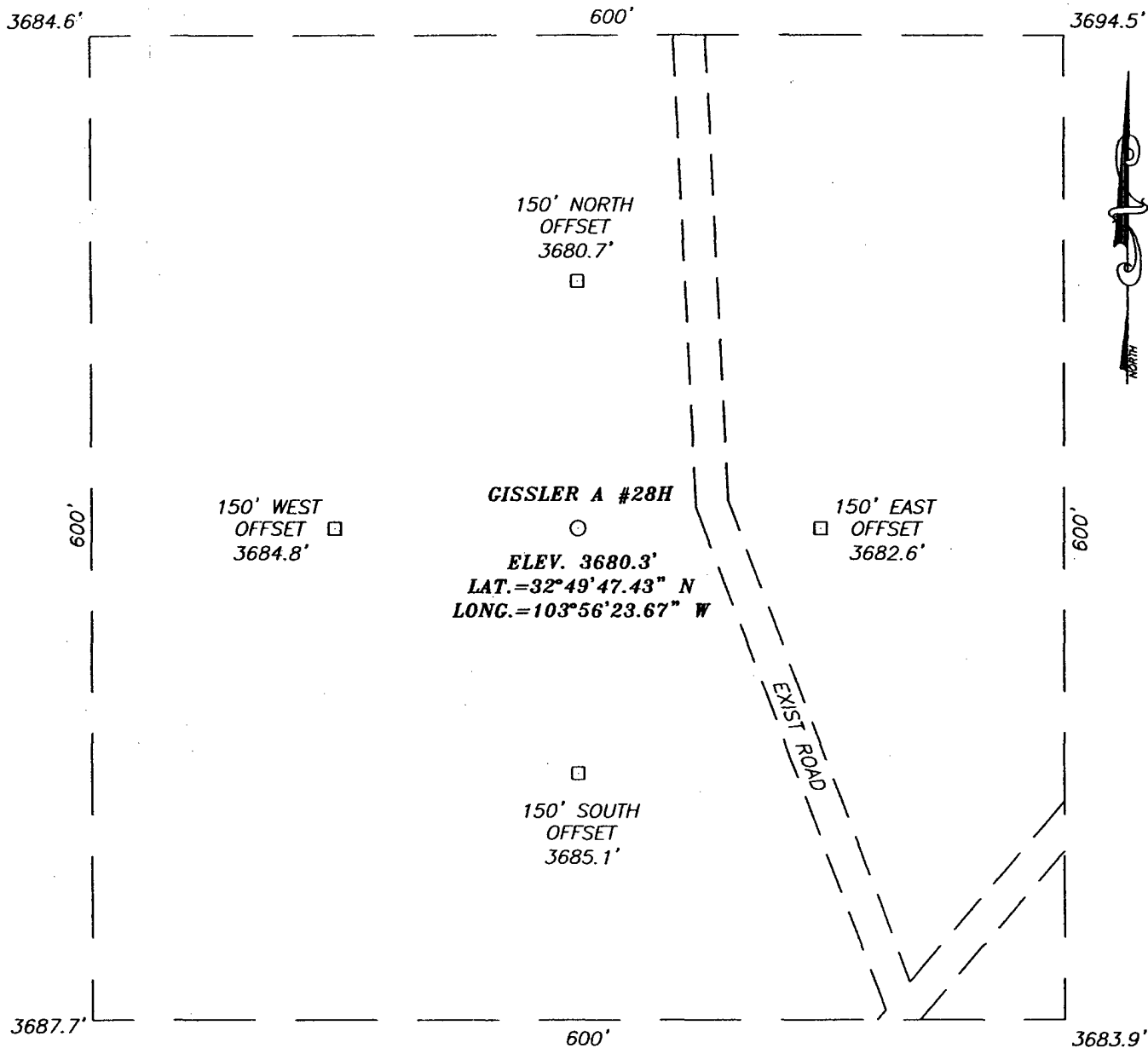
UL or lot No.	Section	Township	Range	Lot Idn	Feet from the	North/South line	Feet from the	East/West line	County
B	23	17-S	30-E		990	NORTH	2160	EAST	EDDY

Dedicated Acres	Joint or Infill	Consolidation Code	Order No.
80			

NO ALLOWABLE WILL BE ASSIGNED TO THIS COMPLETION UNTIL ALL INTERESTS HAVE BEEN CONSOLIDATED
OR A NON-STANDARD UNIT HAS BEEN APPROVED BY THE DIVISION

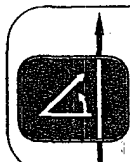
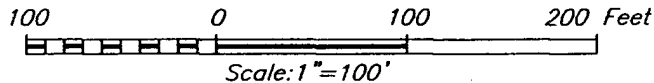
<p>SECTION 14</p> <p>SECTION 23</p>	<p>GEODETIC COORDINATES</p> <p>NAD 27 NME</p> <p>SURFACE</p> <p>Y=665832.3 N</p> <p>X=620849.2 E</p> <p>LAT.=32°49'47.43" N</p> <p>LONG.=103°56'23.67" W</p> <p>SEE DETAIL</p> <p>(SURF)</p> <p>GRAZ=185°11'34"</p> <p>H.DIST=1988.5'</p> <p>990'</p> <p>(BH)</p> <p>2160'</p> <p>3684.6'</p> <p>3694.5'</p> <p>600'</p> <p>600'</p> <p>3687.7'</p> <p>3683.9'</p> <p>DETAIL</p> <p>BOTTOM HOLE</p> <p>Y=663852.0 N</p> <p>X=620669.2 E</p>	<p>OPERATOR CERTIFICATION</p> <p>I hereby certify that the information herein is true and complete to the best of my knowledge and belief, and that this organization either owns a working interest or unleased mineral interest in the land including the proposed bottom hole location or has a right to drill this well at this location pursuant to a contract with an owner of such mineral or working interest, or to a voluntary pooling agreement or a compulsory pooling order heretofore entered by the division.</p> <p><i>Sterling Randolph</i> 5/22/06</p> <p>Signature Date</p> <p>STERLING RANDOLPH</p> <p>Printed Name</p>
	<p>SURVEYOR CERTIFICATION</p> <p>I hereby certify that the well location shown on this plat was plotted from field notes of actual surveys made by me or under my supervision, and that the same is true and correct to the best of my belief.</p> <p>MAY 1, 2006</p> <p>Date Surveyed JR</p> <p>Signature & Seal of Professional Surveyor</p> <p><i>Ronald J. Eidson</i> 5/11/06</p> <p>06.11.0753</p> <p>Certificate No. GARY EIDSON 12841</p> <p>RONALD J. EIDSON 3239</p>	

SECTION 14, TOWNSHIP 17 SOUTH, RANGE 30 EAST, N.M.P.M.,
EDDY COUNTY, NEW MEXICO



DIRECTIONS TO LOCATION

FROM THE INTERSECTION OF U.S. HWY. #82 AND
 CO. RD. #220 (SQUARE LAKE), GO NORTH ON CO.
 RD. #220 APPROX. 1.1 MILES. TURN LEFT AND GO
 WEST APPROX. 0.1 MILES. TURN LEFT AND GO
 SOUTHWEST APPROX. 0.35 MILES. THIS LOCATION
 IS APPROX. 400' NORTHWEST.



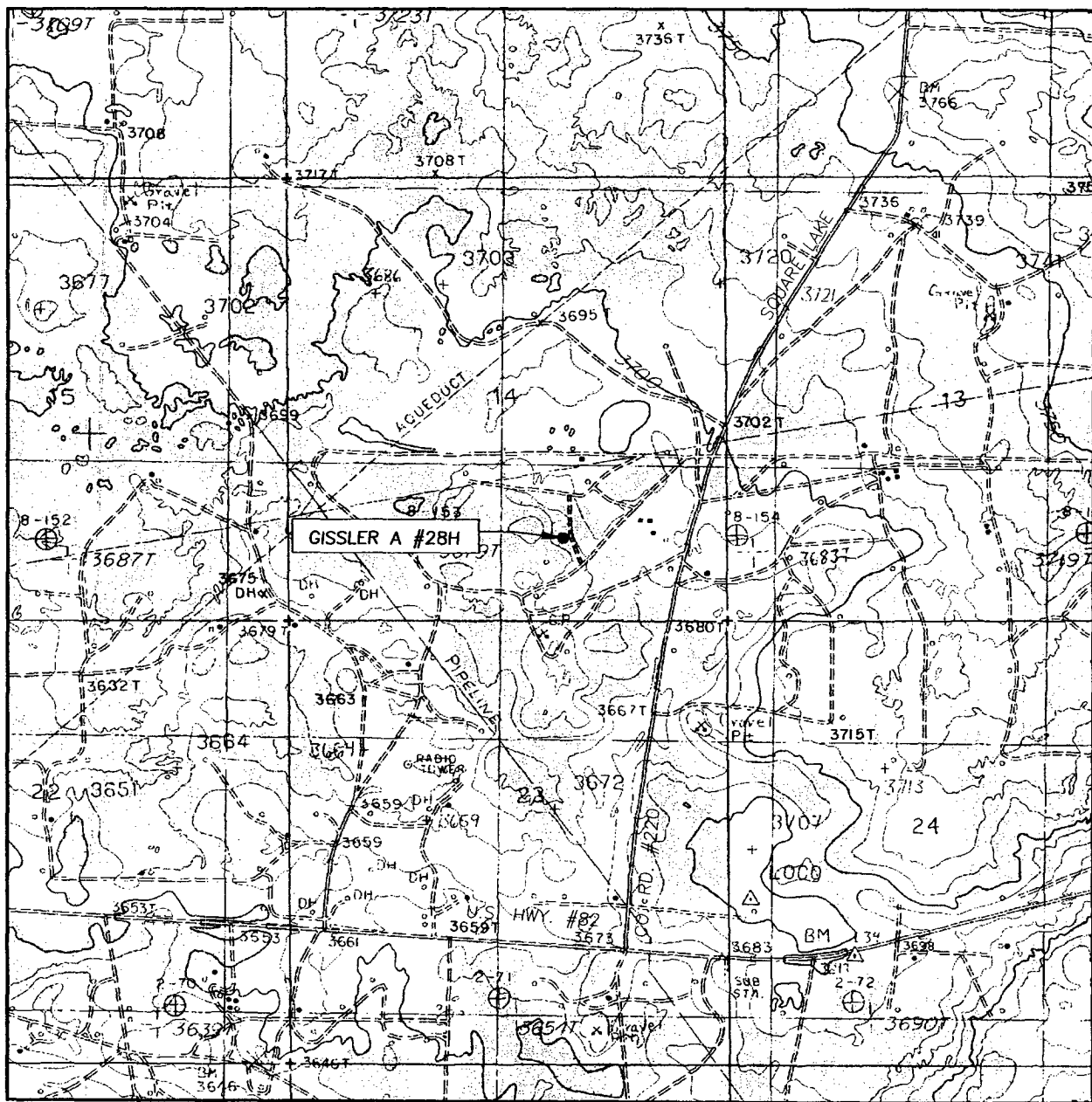
PROVIDING SURVEYING SERVICES
 SINCE 1946
JOHN WEST SURVEYING COMPANY
 412 N. DAL PASO
 HOBBS, N.M. 88240
 (505) 393-3117

BURNETT OIL COMPANY

GISSLER A #28H WELL
 LOCATED 990 FEET FROM THE SOUTH LINE
 AND 1980 FEET FROM THE EAST LINE OF SECTION 14,
 TOWNSHIP 17 SOUTH, RANGE 30 EAST, N.M.P.M.,
 EDDY COUNTY, NEW MEXICO.

Survey Date: 05/01/06	Sheet 1 of 1 Sheets
W.O. Number: 06.11.0753	Dr By: J.R. Rev 1:N/A
Date: 05/09/06	Disk: CD#1 06110753 Scale: 1"=100'

LOCATION VERIFICATION MAP



SCALE: 1" = 2000'

CONTOUR INTERVAL:
LOCO HILLS, N.M. - 10'

SEC. 14 TWP. 17-S RGE. 30-E

SURVEY N.M.P.M.

COUNTY EDDY STATE NEW MEXICO

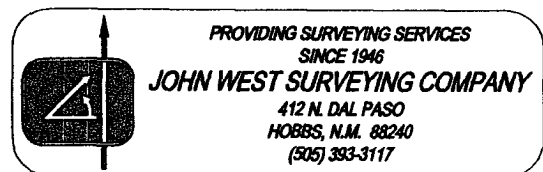
DESCRIPTION 990' FSL & 1980' FEL

ELEVATION 3680'

OPERATOR BURNETT OIL COMPANY

LEASE GISSLER A

U.S.G.S. TOPOGRAPHIC MAP
LOCO HILLS, N.M.



GISSLER A 28H
AMENDED (2) EXHIBIT B



DRILLING PLAN

BURNETT OIL CO., INC.
LEASE NO.NMLC 029338A
GISSLER A LEASE, WELL NO.28H
UNIT B 990' FNL, 2010' FEL -SURFACE
SECTION 23, TOWNSHIP 17 SOUTH, RANGE 30 EAST
UNIT O 990' FSL, 2310' FEL - BTM HOLE
SECTION 14, TOWNSHIP 17 SOUTH, RANGE 30 EAST
EDDY COUNTY, NEW MEXICO

(A) DRILLING PROGRAM

(1) Estimated tops of geologic markers:

Alluvium.....Surface
Anhydrite.....175'
Salt.....390'
Base Salt.....1125'
Yates.....1285'
Seven Rivers.....1615'
Grayburg.....2650'
San Andres.....3005'
Glorieta.....4455'

(2) Estimated depths of producing formations:

Fresh water.....None
Saltwater flows..(?)*
Oil and Gas.....1615'**,2650'**

* As waterflows, if any, are encountered, their depth will be recorded, and drilling will continue to total depth. Multiple stage cementers will be placed in the production casing string to enable us to confine the waterflows to their respective depths by cementing.

** Oil and gas bearing zones, if any, will be determined by log analysis, and will be confined by cementing; subsequently perforated, stimulated and produced in a conventional manner.

(3) Blowout Preventer Specifications:

A 2000 PSI Hydril unit with hydraulic closing equipment. (See Exhibit E schematic). The preventer will be tested before drilling out below surface pipe setting depth. The exact description of the preventer and related equipment will depend on the successful contractor, who has not yet been selected. No high pressure hydrocarbon zones are anticipated.

(4) Supplementary drilling equipment information:

Not available at this time.

(5) Supplementary casing program information:

a. Surface casing: Surface casing will consist of new 9-5/8" OD 32.30# H40 OR 36# J-55 ST&C R3 pipe and will be run into a 14-3/4" hole with notched Texas Pattern shoe on bottom, insert float valve in first collar, Two(2) centralizers around shoe joint and first collar. Bottom three (3) joints will be thread locked. Setting depth will be +/- 415' in the Rustler Anhydrite, depending on where a suitable casing seat can be found. Cement will be circulated back to the surface. Initial cement volume will be calculated to be 100% excess of the calculated annular volume between the 9-5/8" casing and the hole. **If circulation of cement to the surface is not achieved due to lost circulation, we would like permission (without having to call BLM) to fill this annular space using sufficient rat hole mix to bring cement to surface per BLM specification.** Eighteen (18) hours WOC will be allowed as per NMOCD. Casing will be tested to 1000 PSI before drilling out.

NOTIFY
BLM

Representative

b. Production casing: Production casing will consist of new 7" OD 23# J55 R3 8rd LT&C pipe being run to total depth with float shoe on bottom, float collar in first collar, centralizers throughout intervals and above and below any multiple stage cementers, and be cemented with sufficient volume to bring top of cement 600' above the top of the highest potential producing horizon. If water flow is encountered, we will cement from TD back to the stage cementer, open stage cementer, cement from stage cementer with sufficient volume of Class C or equivalent to bring cement up to at least 600' above the highest potential producing horizon, then balancing hydrostatic weight of the cement by adjusting the flow of water to surface through the 7" casing, enabling the 2nd stage of cement to set up. Casing will be shut in after twelve (12) hours. If there is no flow of water to surface around the 7" casing, we will cement the water flow proper through the stage cementer with +/- 1500 sacks. In case the 2nd stage is not successful in shutting off any annular flow, we will repeat the 2nd stage until successful. After drilling out and testing the casing to 2000 PSI, a cement bond log will be run to evaluate the cement job.

[su
step]

- (6) Mud program: Native mud (red beds and shale) will be used to total depth. The surface hole will be drilled with fresh water and lost circulation materials as needed. The remaining hole will be drilled with brine water with necessary additives.
- (7) Logging program: If no water flow(s) are encountered, we will run Neutron Litho density-DLL logs. If water flow(s) are encountered, no open hole logging will be attempted, and after casing is set, cased hole GR/CN logs will be run. No other testing or coring is anticipated.

- (8) Abnormal pressures or hazards: No abnormal pressures or potential hazards are anticipated. The maximum anticipated bottom hole pressure is 1000#. The maximum anticipated bottom hole temperature is 91°F.
- (9) Other facets of the operation to be pointed out:
None.

(B) HYDROGEN SULFIDE DRILLING PROGRAM

- (1) Hydrogen Sulfide Training
All personnel, whether regularly assigned, contracted, or employed on an unscheduled basis, will receive training from a qualified instructor in the following areas prior to commencing drilling operations on this well:
- a. The hazards and characteristics of Hydrogen Sulfide (H₂S).
 - b. The proper use and maintenance of personal protective equipment and life support systems.
 - c. The proper use of H₂S detectors, alarms, warning systems, briefing areas, evacuation procedures and prevailing wind.
 - d. The proper techniques for first aid and rescue procedures.

In addition, supervisory personnel will be trained in the following areas:

- a. The effects of H₂S on metal components. If high tensile tubulars are to be used, personnel will be trained in their special maintenance requirements.
- b. Corrective action and shut-in procedures when drilling or reworking a well, blowout prevention and well control procedures.
- c. The contents and requirements of the H₂S Drilling Operations Plan and the Public Protection Plan (if applicable.)

There will be an initial training session just prior to encountering a known or probable H₂S zone (within 3 days or 500 feet) and weekly H₂S and well control drills for all personnel in each crew. The initial training session shall include a review of the site specific H₂S Drilling Operations Plan and the Public Protection Plan (if applicable). This plan shall be available at the wellsite. All personnel will be required to carry documentation that they have received the proper training.

(2) H2S SAFETY EQUIPMENT AND SYSTEMS

Note: all H2S safety equipment and systems will be installed, tested and operational when drilling reaches a depth of 500 feet above, or three days prior to penetrating the first zone containing or reasonably expected to contain H2S.

a. Well Control Equipment:

1. Choke manifold with a minimum of one remote-controlled choke.
2. The Hydril BOP to accommodate all pipe sizes with a properly sized closing unit.

b. Protective equipment for essential personnel:

1. Mark II Surviveair (or equivalent) 30 minute units located in the dog house and at the primary briefing area(to be determined.)

c. H2S detection and monitoring equipment:

1. Three(3) portable H2S monitors positioned on location for best coverage and response. These units have warning lights and audible sirens when H2S levels of 20 PPM are reached.

d. Visual warning systems:

1. Wind direction indicators will be positioned for maximum visibility.
2. Caution/Danger signs shall be posted on roads providing direct access to location. Signs will be painted a high visibility yellow with black lettering of sufficient size to be readable at reasonable distance from the immediate location. Bilingual signs will be used when appropriate.

e. Mud program:

1. The mud program has been designed to minimize the volume of H2S circulated to the surface. Proper mud weight, safe drilling practices and the use of H2S scavengers will minimize hazards when penetrating H2S bearing zones.

f. Metallurgy:

1. All drill strings, casings, tubing, wellheads, BOPS , drilling spools, kill lines, choke manifold, valves and lines will be suitable for H2S service.
2. All elastomers used for packing and seals shall be H2S trim.

g. Communication:

1. Cellular Telephone and/or 2-way radio will be provided at wellsite.
2. Landline telephone is located in field office.

h. Well testing:

1. No drill stem testing or coring is planned for this well bore. Completion testing, if required, will be conducted under the same applicable H2S guidelines that were used in drilling.

(C) SURFACE USE PROGRAM

- (1) Existing roads: Exhibits A, B and C show maps of the general area. From Loco Hills, New Mexico, on U.S. Highway 82 go north on County road 220 (Square Lake) and go approx. 1.2 miles to an existing road and turn left and go southeast approx. 0.2 miles to a "Y" intersection. Take the left fork (south) approx. 0.2 miles to proposed road and follow 439' to location.
- (2) Access roads to be constructed: **This location will require 439' of additional road into the well pad. See Exhibit A.**
- (3) Location of existing wells: See Exhibit A.
- (4) Location of existing or proposed production facilities: See Exhibit A for location of existing Gissler A2 production facility on the lease. We propose to above ground commingle this Loco Hills Paddock production with the approved existing LHP & Grayburg production by laying approximately **1200' of new flowline** from this well pad along an existing roadway and flow line ROW to the existing Gissler A2 Tank Battery.
- (5) Location and type of water supply: All water to be used in drilling the well will be brine or fresh water trucked from Loco Hills, New Mexico or fresh or produced water furnished by our waterflood facilities.

- (6) Construction materials: Construction material will be caliche which may be available at the proposed location. If not available on location or road, caliche will be hauled from nearest approved caliche pit.
- (7) Methods of handling waste disposal: Drill cuttings will be disposed of in the lined reserve drilling pit. Auxiliary emergency water containment pits may be necessitated by large volume water flows and these pits, which will hold only water, will not be lined. All drilling fluids will be allowed to evaporate after drilling is completed, at which time pits will be back filled, leveled and reseeded. Trash, waste paper, garbage and junk will be placed in a portable screened trash container on location. All trash and debris will be transported to an authorized disposal station within 30 days following completion activities. Oil and/or water produced during testing operations will be stored in steel tanks until either sold or disposed of through one of our approved disposal methods.
- (8) Ancillary Facilities: There are no planned ancillary facilities.
- (9) Well site layout: Exhibit D shows the relative location and dimensions of the drilling pad and related components. Only minor differences, if any, in length and/or width of the drilling pad are anticipated, depending on which drilling contractor is selected to drill the well. Only minor leveling of the drilling site is anticipated.
- (10) Plans for restoration of the surface:
 - (a) After drilling and successful completion operations are finished, all equipment and other materials not required for normal production operations will be removed. Pits will be backfilled, leveled and re-seeded. Well site will be left in a neat condition.
 - (b) Any unguarded pits containing fluid will be fence until backfilled.
 - (c) After abandonment of the well, surface restoration will be in accordance with regulations of the SMA. Pits will be backfilled and location will be cleaned. The pit area, well pad and all unneeded access roads will be ripped to promote revegetation. Rehabilitation should be accomplished within 90 days after abandonment.
- (11) Surface ownership: All lands are Federal.

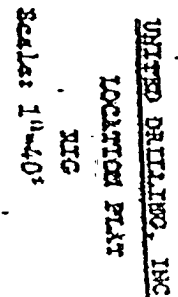
- (12) Other information: The topography of the area is relatively flat, with small hills and sand dunes. The soil is fine, deep sand underlain by caliche. Vegetation cover is generally sparse and consists of mesquite, yucca, oak shinners and sparse native grasses. Wildlife in the area is typical of that of semi-arid lands and includes coyotes, rabbits, rodents, reptiles, dove and quail. There are no ponds, streams or residences in the area. There is intermittent cattle grazing and hunting in the area; however, the principal land use is for oil and gas production. An archaeological clearance report will be sent to you by a BLM approved archaeological service.
- (13) Operator's representative: Our field representative responsible for compliance with the approved surface use and operations plan is:

Mr. Belton Mathews, District Supt.
P.O. Box 188
Loco Hills, New Mexico 88255
Office phone: 505-677-2313
Home phone: 505-746-8647
Cellular phone: 505-746-7979

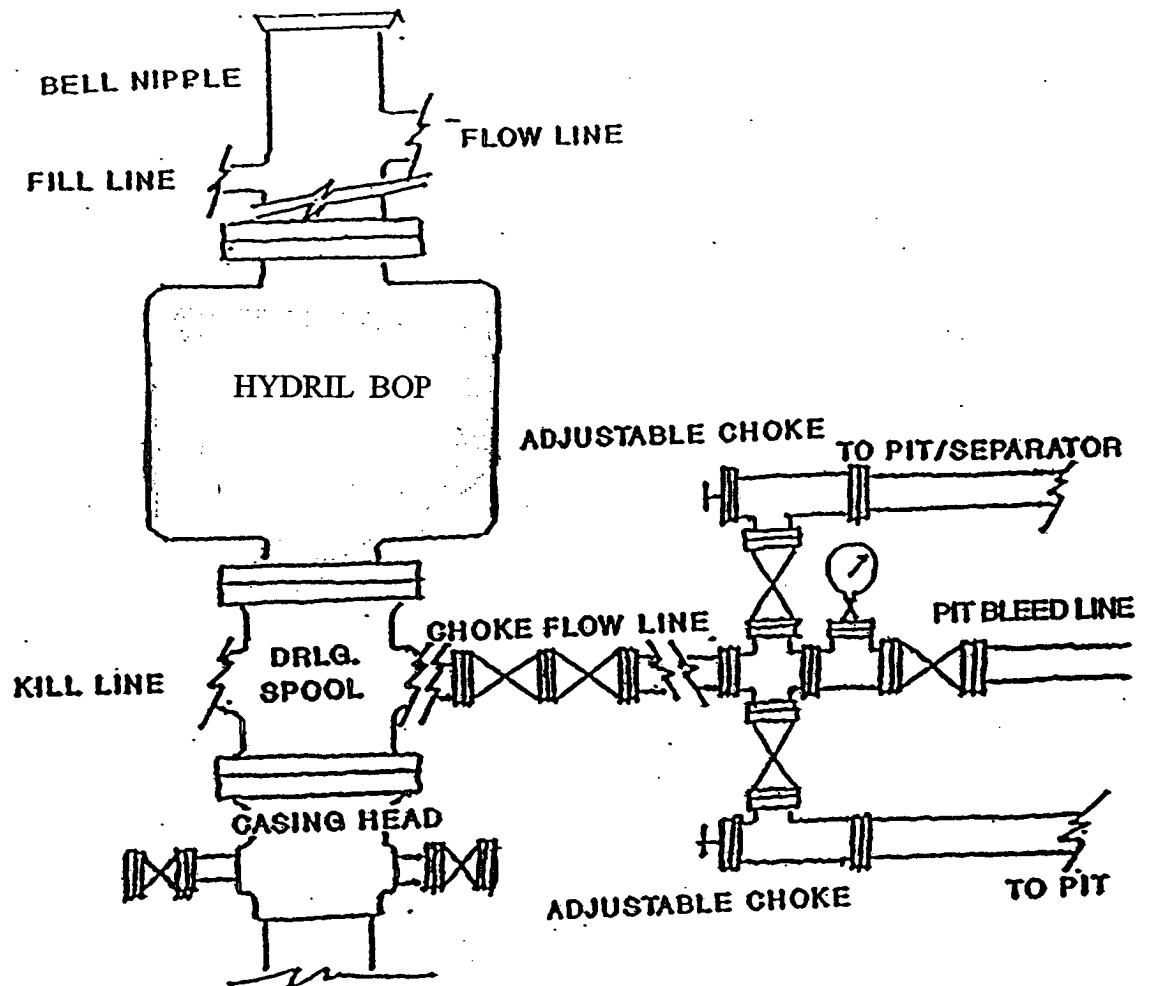
I hereby certify that I, or persons under my direct supervision have inspected the drill site and access route; that I am familiar with the conditions that currently exist; that the statements made in this plan are to the best of my knowledge, true and correct; and that the work associated with operations proposed herein will be performed by Burnett Oil Co., Inc. and its contractors and subcontractors in conformity with this plan and the terms and conditions under which it is approved. This statement is subject to the provisions of 18 U.S.C. 1001 for the filing of a false statement.

Date: March 16, 2006

By: Sterling P. Randolph
Sterling P. Randolph
Petroleum Engineer



GISSLER A #28
EXHIBIT "D"



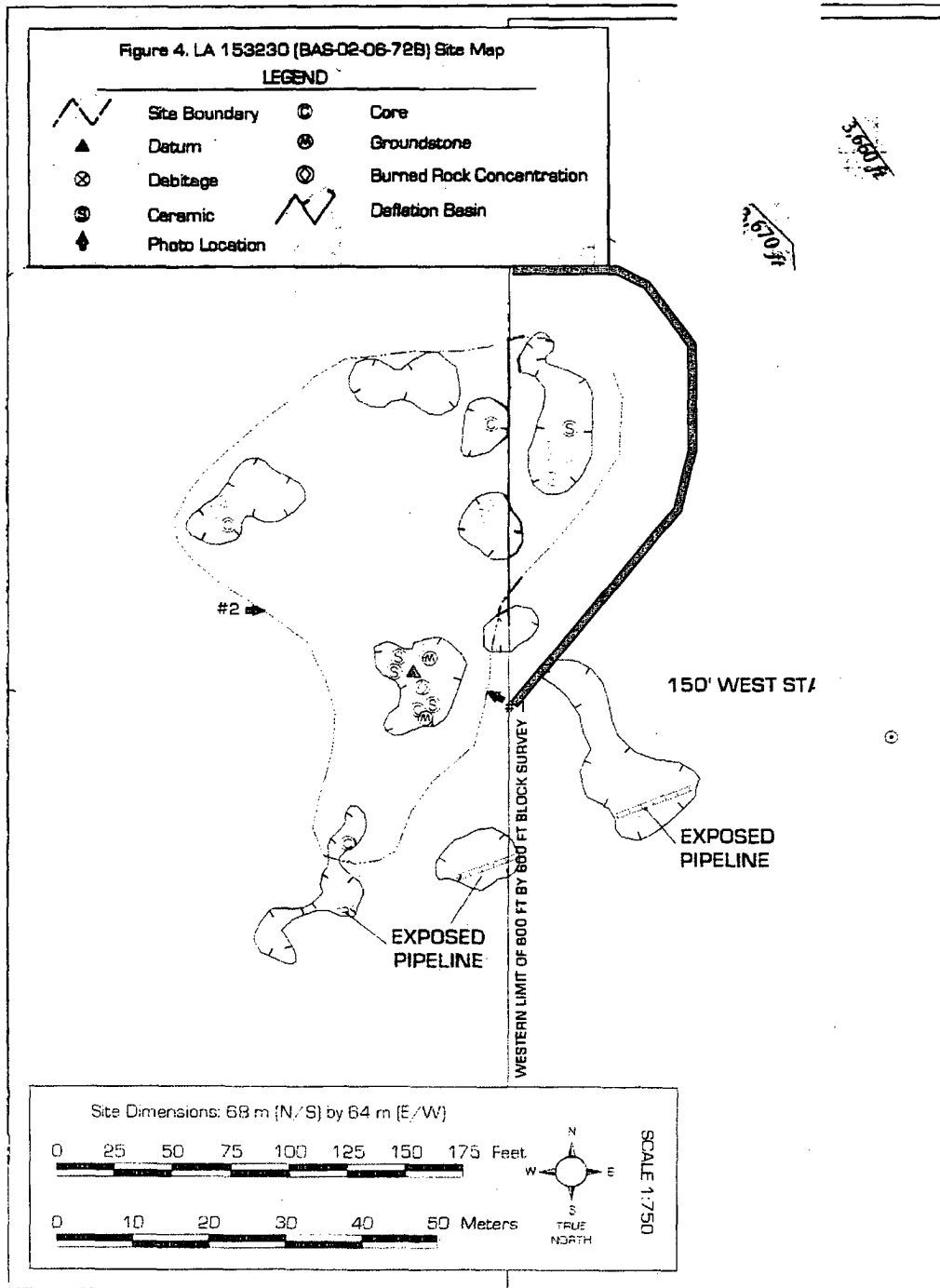
BURNETT OIL CO., INC.

**BLOWOUT PREVENTER &
CHOKE MANIFOLD DIAGRAM
2000 PSI WORKING PRESSURE
SERIES 600 FLANGES**

GISSLER A #28
EXHIBIT "E"

Exhibit 1A

Survey for the Gissler A No. 28H Well Pad, Access Road, and Associated Flow Line



BAS-03-06-72

9

MONITOR

CONDITIONS OF APPROVAL - DRILLING

Operator's Name: Burnett Oil Company

Well Name & No: Gissler A, No. 28-H

Location: Surface, 990' FEL & 2010' FEL, Sec. 23, T. 17 S. R. 30 E.

BHL: 990' FEL & 2310' FEL Sec. 23, T. 17 S., R 30 E.

Lease: NMLC 029338-A

Eddy County, New Mexico

I. DRILLING OPERATIONS REQUIREMENTS:

1. The Bureau of Land Management (BLM) is to be notified at the Roswell Field Office, 2909 West Second St., Roswell, NM 88201, (505) 627-0272 for wells in Chaves and Roosevelt Counties; the Carlsbad Field Office, 620 East Greene St., Carlsbad, NM 88220, (505) 361-2822 for wells in Eddy County; and the Hobbs Field Station, 414 West Taylor, Hobbs NM 88240, (505) 393-3612 for wells in Lea County, in sufficient time for a representative to witness:

A. Spudding

B. Cementing casing: 9 5/8 inch; 7 inch;

C. BOP Tests

2. A Hydrogen Sulfide (H₂S) Drilling Plan is shall be in operations 3 days or 500 feet prior to drilling into the Top of the Seven Rivers formation. The San Andres and Queen may contain H₂S as well.

3. Unless the production casing has been run and cemented or the well has been properly plugged, the drilling rig shall not be removed from over the hole without prior approval.

4. Submit a Sundry Notice (Form 3160-5, one original and five copies) for each casing string, describing the casing and cementing operations. Include pertinent information such as; spud date, hole size, casing (size, weight, grade and thread type), cement (type, quantity and top), water zones and problems or hazards encountered. The Sundry shall be submitted within 15 days of completion of each casing string. The reports may be combined into the same Sundry if they fall within the same 15 day time frame.

5. The API No. assigned to the well by NMOCD shall be included on the subsequent report of setting the first casing string.

II. CASING:

1. The 9 5/8 inch shall be set at 415 Feet at least 25 ft. into the Top of the Anhydrite and ABOVE the Top of the Salt, with cement circulated to the surface. If cement does not circulate to the surface the appropriate BLM office shall be notified and a temperature survey or cement bond log shall be run to verify the top of the cement. Remedial cementing under lost circulations conditions shall be completed prior to drilling out that string.

2. The minimum required fill of cement behind the 7 inch Production casing is to circulate to surface. It is required as a minimum that the first two strings of pipe be circulated to surface with cement on any and all well bores.

III. PRESSURE CONTROL:

1. All BOP systems and related equipment shall comply with well control requirements as described in Onshore Oil and Gas Order No. 2. The BOP and related equipment shall be installed and operational before drilling below the 9 5/8 inch casing shoe and shall be tested as described in Onshore Order No. 2. Any equipment failing to test satisfactorily shall be repaired or replaced.

(III Cont):

2. Minimum working pressure of the blowout preventer and related equipment (BOPE) shall be 2 M psi.

3. The appropriate BLM office shall be notified in sufficient time for a representative to witness the test.

- The test shall be done by an independent service company
- The results of the test shall be reported to the appropriate BLM office.
- Testing fluid must be water or an appropriate clear liquid suitable for sub-freezing temperatures.
- Use of drilling mud for testing is not permitted since it can mask small leaks.
- Testing must be done in safe workman-like manner. Hard line connections shall be required.
- Both low pressure and high pressure testing of BOPE is required.

G. Gourley RFO 03/27/06