

If earthen pits are used in association with the drilling of this well, an OCD pit permit must be obtained prior to pit construction.

OCD-ARTESIA
SUBMIT IN TRIPLICATE*
(Other instructions on reverse side)Form approved. 15-06-20
Budget Bureau No. 1004-0136
Expires: December 31, 1991

BUREAU OF LAND MANAGEMENT

APPLICATION FOR PERMIT TO DRILL OR DEEPEN

1a. TYPE OF WORK

DRILL ☒DEEPEN ☐

b. TYPE OF WELL

OIL WELL ☐Gas Well ☒

OTHER

2. NAME OF OPERATOR

Mack Energy Corporation

3. ADDRESS AND TELEPHONE NO.

P.O. Box 960, Artesia, NM 88211-0960

(505) 748-1288

4. LOCATION OF WELL (Report location clearly and in accordance with any state requirement.)*

At surface

660 FSL & 1980 FEL

At proposed prod. zone

660 FNL & 1980 FEL

14. DISTANCE IN MILES AND DIRECTION FROM NEAREST TOWN OR POST OFFICE*

7 miles southeast of Hope, NM

15. DISTANCE FROM PROPOSED* LOCATION TO NEAREST PROPERTY OR LEASE LINE, FT.

660

16. NO. OF ACRES IN LEASE

1120

17. NO. OF ACRES IN LEASE TO THIS WELL

320

18. DISTANCE FROM PROPOSED LOCATION* TO NEAREST WELL, DRILLING, COMPLETED OR APPLIED FOR, ON THIS LEASE, FT.

2640

19. PROPOSED DEPTH

8200

20. ROTARY OR CABLE TOOLS

Rotary

21. ELEVATIONS (Show whether DF, RT, GR, etc.)

3894' GR

22. APPROX. DATE WORK WILL START*

9/7/2006

23.

PROPOSED CASING AND CEMENTING PROGRAM ROSWELL CONTROLLED WATER BASIN

SIZE OF HOLE	GRADE, SIZE OF CASING	WEIGHT PER FOOT	SETTING DEPTH	QUANTITY OF CEMENT
17 1/2	H-40, 13 3/8	48	450	Circ
12 1/4	J-55, 9 5/8	36	1400	Suff to Circ
7 7/8	J-55, 5 1/2	17	8200	Suff to Circ

Mack Energy proposes to drill to a vertical hole to +/- 4900', drill horizontal appr. 3960' north test the Wolfcamp formation. Run 5 1/2" casing and cement. If non-productive, the well will be plugged and abandoned in a manner consistent with federal regulation. Specific programs as per Onshore Oil and Gas Order #1 are outlined in the following attachments:

1. Surveys

Exhibit #1- Well Location Plat
Exhibit #2- Vicinity Map
Exhibit #3- Location Verification Map

4. Certification5. Hydrogen Sulfide Drilling Operation Plan

Exhibit #7- H2S Warning Sign
Exhibit #8- H2S Safety Equipment

7. Responsibility Statement2. Drilling Program3. Surface Use & Operating Plan

Exhibit #4- One Mile Radius Map
Exhibit #5- Production Facilities Layout
Exhibit #6- Location Layout

6. Blowout Preventers

Exhibit #9- BOPE Schematic
Exhibit #10- Blowout Preventer Requirements
Exhibit #11- Choke Manifold

APPROVAL SUBJECT TO
GENERAL REQUIREMENTS
AND SPECIAL STIPULATIONS
ATTACHED

IN ABOVE SPACE DESCRIBE PROPOSED PROGRAM: If proposal is to deepen, give data on present productive zone and proposed new productive zone. If proposal is to drill or deepen directionally, give pertinent data on subsurface locations and measured and true vertical depths. Give blowout preventer program, if any.

24.

SIGNED

James W. Shenell

TITLE

Production Clerk

DATE

8/7/2006

(This space for Federal or State office use)

PERMIT NO.

APPROVAL DATE

Application approval does not warrant or certify that the applicant holds legal or equitable title to those rights in the subject lease which would entitle the applicant to conduct operations thereon.

CONDITIONS OF APPROVAL, IF ANY:

/s/ James Stovall

ACTING FIELD MANAGER

APPROVED BY

TITLE

NOV 03 2006

APPROVAL FOR 1 YEAR

*See Instructions On Reverse Side

Title 18 U.S.C. Section 1001, makes it a crime for any person knowingly and willfully to make to any department or agency of the United States any false, fictitious or fraudulent statements or representations as to any matter within its jurisdiction.

DISTRICT I

1625 N. FRENCH DR., HOBBS, NM 88240

DISTRICT II

1301 W. GRAND AVENUE, ARTESIA, NM 88210

DISTRICT III

1000 Rio Brazos Rd., Aztec, NM 87410

DISTRICT IV

1625 S. ST. FRANCIS DR., SANTA FE, NM 87505

State of New Mexico

Energy, Minerals and Natural Resources Department

OIL CONSERVATION DIVISION
1220 SOUTH ST. FRANCIS DR.
Santa Fe, New Mexico 87505

Form C-102

Revised 12/18/2003

Submit to Appropriate District Office

State Lease - 4 Copies

Fee Lease - 3 Copies

WELL LOCATION AND ACREAGE DEDICATION PLAT

☐ AMENDED REPORT

API Number	Pool Code 96316	Pool Name PENASCO DRAW; WOLFCAMP
Property Code	Property Name PECOS FEDERAL	Well Number 1
OGRID No. 013837	Operator Name MACK ENERGY CORPORATION	Elevation 3894'

Surface Location

UL or lot No.	Section	Township	Range	Lot Idn	Feet from the	North/South line	Feet from the	East/West line	County
0	12	18-S	23-E		660	SOUTH	1980	EAST	EDDY

Bottom Hole Location If Different From Surface

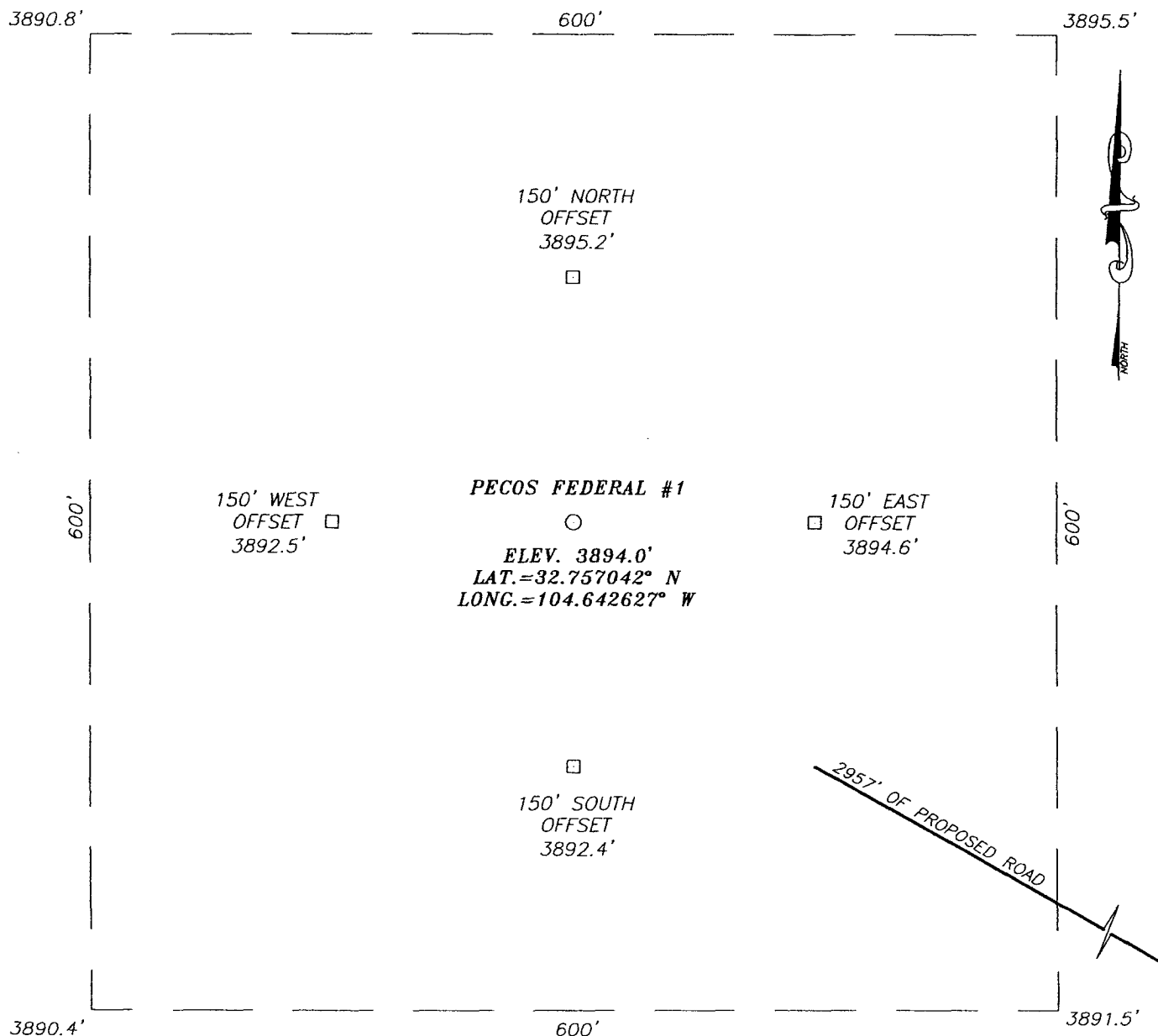
UL or lot No.	Section	Township	Range	Lot Idn	Feet from the	North/South line	Feet from the	East/West line	County
B	12	18S	23E		660	NORTH	1980	EAST	EDDY

Dedicated Acres	Joint or Infill	Consolidation Code	Order No.
320			

NO ALLOWABLE WILL BE ASSIGNED TO THIS COMPLETION UNTIL ALL INTERESTS HAVE BEEN CONSOLIDATED
OR A NON-STANDARD UNIT HAS BEEN APPROVED BY THE DIVISION

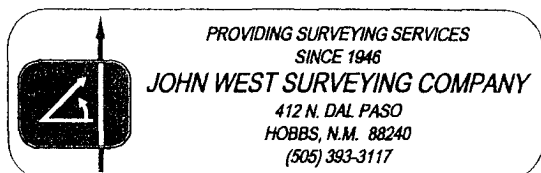
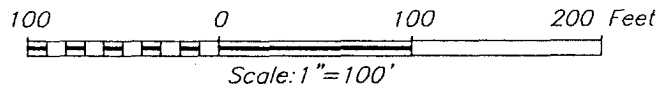
<p>PROJECT AREA</p> <p>BHL</p> <p>PRODUCING AREA</p> <p>GEODETIC COORDINATES NAD 27 NME</p> <p>Y=639261.7 N X=404916.6 E</p> <p>LAT.=32.757042° N LONG.=104.542627° W</p>	<p>3890.8'</p> <p>3895.5'</p> <p>600'</p> <p>600'</p> <p>3890.4'</p> <p>3891.5'</p> <p>600'</p> <p>1980'</p>	<p>OPERATOR CERTIFICATION</p> <p>I hereby certify that the information herein is true and complete to the best of my knowledge and belief, and that this organization either owns a working interest or unleased mineral interest in the land including the proposed bottom hole location or has a right to drill this well at this location pursuant to a contract with an owner of such mineral or working interest, or to a voluntary pooling agreement or a compulsory pooling order heretofore entered by the division.</p> <p><i>Jerry W. Sherrell</i> 8/7/06 Signature Date</p> <p>Jerry W. Sherrell Printed Name</p>
	<p>SURVEYOR CERTIFICATION</p> <p>I hereby certify that the well location shown on this plat was plotted from field notes of actual surveys made by me or under my supervision, and that the same is true and correct to the best of my belief.</p> <p>RONALD J. EIDSON JULY 17 2006 DATE SURVEYED</p> <p>Signature & Seal of Professional Surveyor</p> <p><i>Ronald J. Eidson</i> 7/24/06 REGISTERED PROFESSIONAL SURVEYOR</p> <p>Certificate No. GARY EIDSON 12641 RONALD J. EIDSON 3239</p>	

SECTION 12, TOWNSHIP 18 SOUTH, RANGE 23 EAST, N.M.P.M.,
 EDDY COUNTY, NEW MEXICO



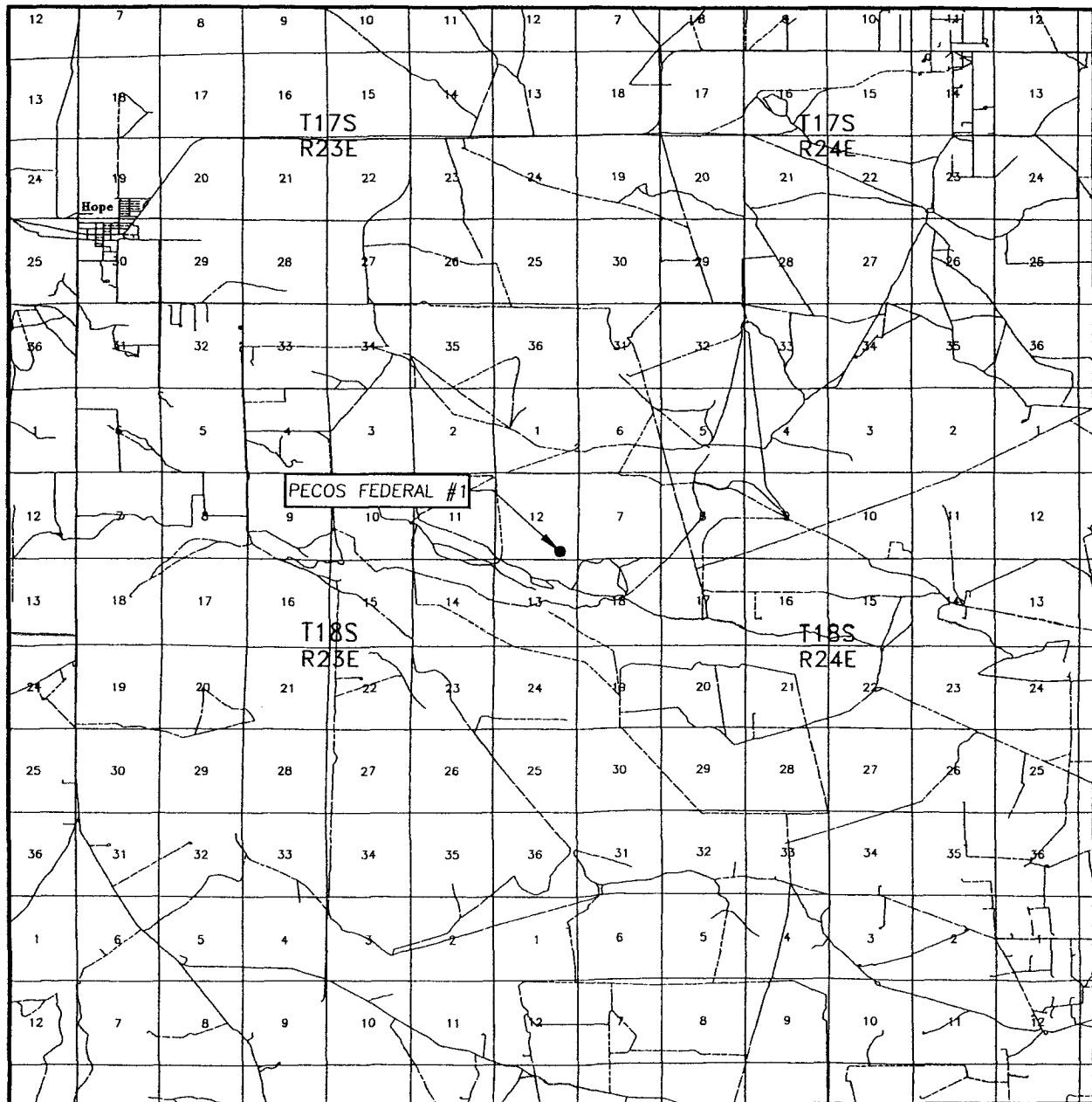
DIRECTIONS TO LOCATION

FROM THE INTERSECTION OF U.S. HIGHWAY #285 AND CO. RD. #39 (FOUR DINKUS RD.) GO WEST ON CO. RD. #39 APPROX. 13.3 MILES TO A PROPOSED ROAD SURVEY AT THE MACK BRAZOS STATE #1 WELL PAD. FOLLOW PROPOSED ROAD WEST/NORTHWEST APPROX. 2957 FEET TO THIS LOCATION.



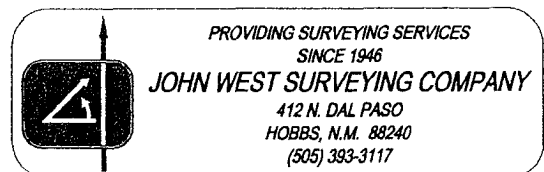
MACK ENERGY CORPORATION			
PECOS FEDERAL #1 WELL LOCATED 660 FEET FROM THE SOUTH LINE AND 1980 FEET FROM THE EAST LINE OF SECTION 12, TOWNSHIP 18 SOUTH, RANGE 23 EAST, N.M.P.M., EDDY COUNTY, NEW MEXICO.			
Survey Date: 07/17/06	Sheet 1 of 1 Sheets		
W.O. Number: 06.11.1120	Dr By: J.R.	Rev 1: N/A	
Date: 07/20/06	Disk: CD#6	06111120	Scale: 1"=100'

VICINITY MAP




SCALE: 1" = 2 MILES

SEC. 12 TWP. 18-S RGE. 23-E
 SURVEY N.M.P.M.
 COUNTY EDDY
 DESCRIPTION 660' FSL & 1980' FEL
 ELEVATION 3894'
 OPERATOR MAC K ENERGY CORPORATION
 LEASE PECOS FEDERAL



This topographic map shows the Pecos area, including the Pecos Federal #1 well and a 2957' access road. The map features contour lines, spot elevations, and section numbers (12, 13, 18, 7). Key features include:

- Pecos Federal #1**: A well location marked with a black dot and labeled with a callout box.
- 2957' OF ACCESS ROAD**: A road segment marked with a dashed line and labeled with a callout box.
- Geographic Features**: "Rio Penasco" and "Walnut Draw" are labeled. A "DITCH" is also indicated.
- Elevations**: Numerous spot elevations are shown, such as 3848, 3870, 3838, 3820, 3877, 3850, 3862, 3856, 3848, 3855, 3853, 3892, and 3829.
- Section Numbers**: The map is divided into sections 12, 13, 18, and 7.
- Other Labels**: "BM 3885" and "BM 3784" are marked as benchmark locations.



PROVIDING SURVEYING SERVICES
 SINCE 1946
JOHN WEST SURVEYING COMPANY
 412 N. DAL PASO
 HOBBS, N.M. 88240
 (505) 393-3117

Attached to Form 3160-3
Mack Energy Corporation
Pecos Federal #1
Surface 660 FSL & 1980 FEL, BHL 660 FNL & 1980 FEL
SW/4 SE/4, Sec 12 T18S R23E
Eddy County, NM

DRILLING PROGRAM

1. Geologic Name of Surface Formation

Quaternary

2. Estimated Tops of Important Geologic Markers:

San Andres	375'
Glorietta	1700'
Tubb	3000'
Abo Shale	3645'
Wolfcamp	4710'

3. Estimated Depths of Anticipated Fresh Water, Oil and Gas:

Water Sand	750'	Fresh Water
Abo Carbonate	3825'	Oil/Gas
Wolfcamp	4710'	Oil/Gas

No other formations are expected to give up oil, gas or fresh water in measurable quantities. Set 13 3/8" casing to 450' and circulating cement back to surface. Set 9 5/8" casing to 1400' and circulating cement back to surface. Any shallower zones above TD, which contain commercial quantities of oil and/or gas, will have cement circulated across them by cementing 5 1/2" production casing, which will be run at TD.

4. Casing Program:

Hole Size	Interval	OD Casing	Weight, Grade, Jt, Cond., Type
17 1/2"	0-450'	13 3/8"	48#, H-40, ST&C, New, R-3
12 1/4"	0-1400'	9 5/8"	36#, J-55, ST&C, New, R-3
7 7/8"	0-TD	5 1/2"	17#, J-55, LT&C, New, R-3

5. Cement Program:

13 3/8" Surface Casing: Circulate to Surface with Class C w/2% CaCl₂.

9 5/8 Intermediate Casing: Circulate to Surface with Class C W/2% CaCl₂.

5 1/2" Production Casing: Cement Casing with Class C w/6# Salt & 2/10 of 1% CFR-3 per sack. We will run a hole caliper and run sufficient cement to circulate to surface.

6. Minimum Specifications for Pressure Control:

Attached to Form 3160-3
Mack Energy Corporation
Pecos Federal #1
Surface 660 FSL & 1980 FEL, BHL 660 FNL & 1980 FEL
SW/4 SE/4, Sec 12 T18S R23E
Eddy County, NM

The blowout preventer equipment (BOP) shown in Exhibit #9 will consist of a double ram-type (2000 psi WP) preventer. This unit will be hydraulically operated and the ram type preventer will be equipped with blind rams on top of 4 1/2" drill pipe rams on bottom. If ran the BOP will be nipped up on the 13 3/8" surface casing and tested to 1500 psi by a 3rd party. The BOP will then be nipped up on the 9 5/8" intermediate casing and tested by a 3rd party to 2000 psi and used continuously until TD is reached. All BOP's and accessory equipment will be tested to 2000 psi before drilling out of intermediate casing. Pipe rams will be operationally checked each 24-hour period. Blind rams will be operationally checked on each trip out of the hole. These checks will be noted on the daily tour sheets. Other accessories to the BOP equipment (Exhibit #10) will include a Kelly cock and floor safety valve and choke lines and choke manifold (Exhibit #11) with 2000 psi WP rating.

7. Types and Characteristics of the Proposed Mud System:

The well will be drilled to TD with a combination of brine, cut brine and polymer mud system. The applicable depths and properties of this system are as follows:

DEPTH	TYPE	WEIGHT	VISCOSITY	WATERLOSS
0-1400'	Fresh Water	8.5	28	N.C.
1400'-TD	Cut Brine	9.1	29	N.C.

Sufficient mud materials to maintain mud properties and meet minimum lost circulation and weight increase requirements will be kept at the well site at all times.

8. Auxiliary Well Control and Monitoring Equipment:

- A. Kelly cock will be kept in the drill string at all times.
- B. A full opening drill pipe-stabbing valve with proper drill pipe connections will be on the rig floor at all times.

9. Logging, Testing and Coring Program:

- A. The electric logging program will consist of GR-Dual Laterolog, Spectral Density, Dual Spaced Neutron, CSNG Log and will be ran from T.D. to 9 5/8 casing shoe.
- B. Drill Stem test is not anticipated.
- C. No conventional coring is anticipated.
- D. Further testing procedures will be determined after the 5 1/2" production casing has been cemented at TD based on drill shows and log evaluation.

10. Abnormal Conditions, Pressures, Temperatures and Potential Hazards:

Attached to Form 3160-3
Mack Energy Corporation
Pecos Federal #1
Surface 660 FSL & 1980 FEL, BHL 660 FNL & 1980 FEL
SW/4 SE/4, Sec 12 T18S R23E
Eddy County, NM

No abnormal pressures or temperatures are anticipated. The estimated bottom hole at TD is 110 degrees and estimated maximum bottom hole pressure is 2300 psig. Low levels of Hydrogen sulfide have been monitors in producing wells in the area, so H2S may be present while drilling of the well a plan is attached to the Drilling program. No major loss of circulation zones has been reported in offsetting wells.

11. Anticipated Starting Date and Duration of Operations:

Road and location work will not begin until approval has been received from the BLM. The anticipated spud date is September 7, 2006. Once commenced, the drilling operation should be finished in approximately 30 days. If the well is productive, an additional 30 days will be required for completion and testing before a decision is made to install permanent facilities.

Attached to Form 3160-3
Mack Energy Corporation
Pecos Federal #1
Surface 660 FSL & 1980 FEL, BHL 660 FNL & 1980 FEL
SW/4 SE/4, Sec 12 T18S R23E
Eddy County, NM

SURFACE USE AND OPERATING PLAN

1. Existing & Proposed Access Roads

- A. The well site and elevation plat for the proposed well is shown in Exhibit #1. It was staked by John West Engineering, Hobbs, NM.
- B. All roads to the location are shown in Exhibit below. The existing lease roads are illustrated in Blue and are adequate for travel during drilling and production operations. Upgrading existing roads prior to drilling well will be done where necessary.
- C. Directions to Location: From the intersection of Hwy 285 and CR #39 go west 13.3 miles to MEC Brazos State #1, follow proposed road W/NW 2957' to location.
- D. Routine grading and maintenance of existing roads will be conducted as necessary to maintain their condition as long as any operations continue on this lease.

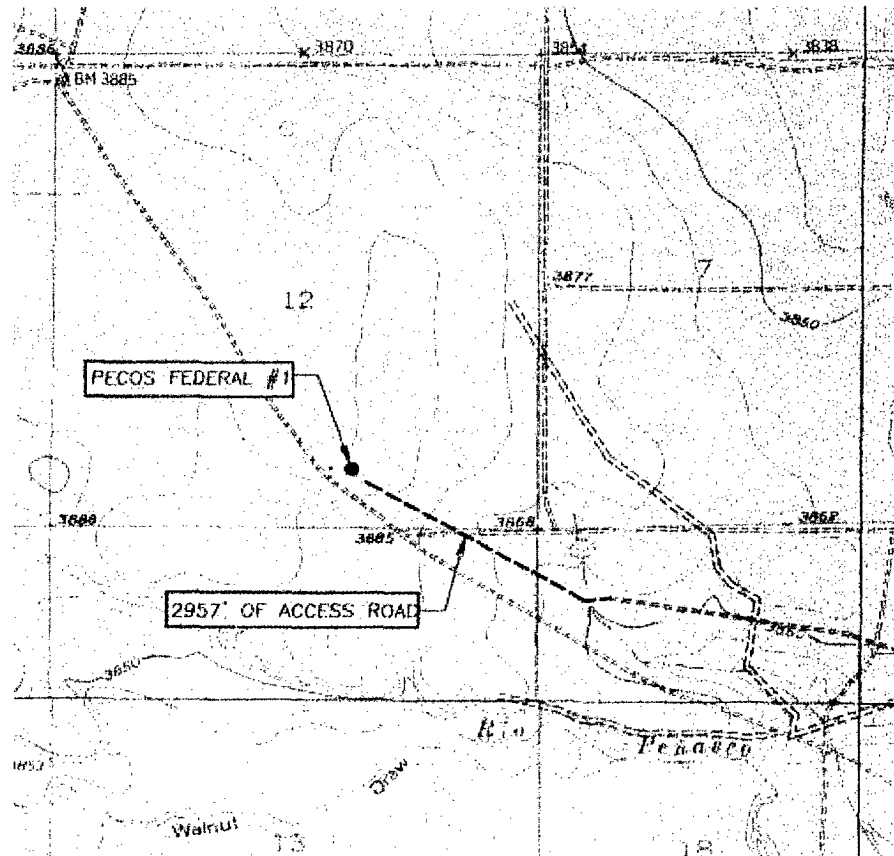


Exhibit #4

Attached to Form 3160-3
Mack Energy Corporation
Pecos Federal #1
Surface 660 FSL & 1980 FEL, BHL 660 FNL & 1980 FEL
SW/4 SE/4, Sec 12 T18S R23E
Eddy County, NM

2. Proposed Access Road:

Exhibit #3 shows the 2957' of new access road to be constructed. The road will be constructed as follows:

- A. The Maximum width of the running surface will be 14'. The road will be crowned and ditched and constructed of 6" rolled and compacted caliche. Ditches will be at 3:1 slope and 4 feet wide. Water will be diverted where necessary to avoid ponding, prevent erosion, maintain good drainage, and to be consistent with local drainage patterns.
- B. The average grade will be less than 1%.
- C. No turnouts are planned.
- D. No culverts, cattleguard, gates, low water crossings or fence cuts are necessary.
- E. Surfacing material will consist of native caliche. Caliche will be obtained from the nearest BLM approved caliche pit or reserve pit area.
- F. The proposed access road as shown in Exhibit #3 has been centerline flagged by John West Engineering, Hobbs, New Mexico.

3. Location of Existing Wells & Proposed flow lines for New Wells:

Exhibit #4 shows all existing wells within a one-mile radius of this well. Proposed flow lines, will stay on location a Tank Battery will be constructed on this location.

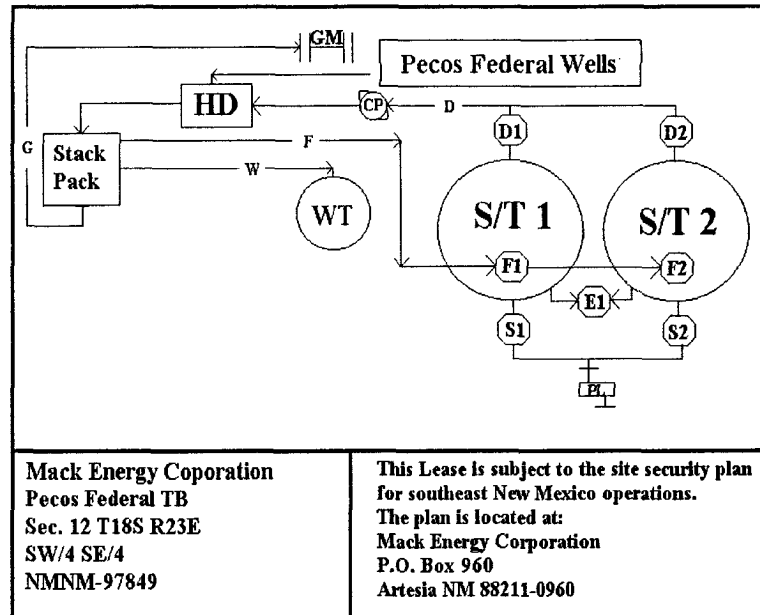
4. Location of Existing and/or Proposed Facilities:

- A. Mack Energy Corporation does not operate a production facility on this lease.
- B. If the well is productive, contemplated facilities will be as follows:
 - 1) Wolfcamp Completion: Will be sent to the Pecos Federal Com TB . The Facility is shown in Exhibit #5.
 - 2) The tank battery and facilities including all flow lines and piping will be installed according to API specifications.
 - 3) Any additional caliche will be obtained from a BLM approved caliche pit. Any additional construction materials will be purchased from contractors.

Attached to Form 3160-3
Mack Energy Corporation
Pecos Federal #1
Surface 660 FSL & 1980 FEL, BHL 660 FNL & 1980 FEL
SW/4 SE/4, Sec 12 T18S R23E
Eddy County, NM

- 4) It will be necessary to run electric power if this well is productive. Power will be run by CVE and they will send in a separate plan for power.

Exhibit #5



A. If the well is productive, rehabilitation plans are as follows:

- 1) The reserve pit will be back filled after the contents of the pit are dry (within 120 days after the well is completed).
- 2) Topsoil removed from the drill site will be used to recontour the pit area to the original natural level, as nearly as possible, and reseeded as per BLM specifications.

5. Location and Type of Water Supply:

The well will be drilled with combination brine and fresh water mud system as outlined in the drilling program. The water will be obtained from commercial water stations in the area and hauled to location by transport truck over the existing and proposed access roads shown in Exhibit #4. If a commercial fresh water source is nearby, fasline may be laid along existing road ROW's and fresh water pumped to the well. No water well will be drilled on the location.

6. Source of Construction Materials:

All caliche required for construction of the drill pad and proposed new access road (approximately 2500 cubic yards) will be obtained from a BLM approved caliche pit or the reserve pit.

Attached to Form 3160-3
Mack Energy Corporation
Pecos Federal #1
Surface 660 FSL & 1980 FEL, BHL 660 FNL & 1980 FEL
SW/4 SE/4, Sec 12 T18S R23E
Eddy County, NM

7. Methods of Handling Water Disposal:

- A. Drill cuttings not retained for evaluation purposes will be disposed into the reserve pit.
- B. Drilling fluids will be contained in a lined working pit. The reserve pit will contain any excess drilling fluid or flow from the well during drilling, cementing and completion operations. The reserve pit will be an earthen pit, approximately 125' X 125' X 10' deep with a dividing wall dividing it into two horseshoe style pits and fenced on three sides prior to drilling. It will be fenced on the fourth side immediately following rig removal. The reserve pit will be lined 125' X 125' X 10'. The reserve pit will be lined (12-mil thickness) to minimize loss of drilling fluids and saturation of the ground with brine water.
- C. Water produced from the well during completion may be disposed into the reserve pit or a steel tank (depending on the rates). After the well is permanently placed on production, produced water will be collected in tanks (fiberglass) until pumped to an approved disposal system; produced oil will be collected in steel tanks until sold.
- D. Garbage and trash produced during drilling or completion operations will be collected in a trash bin and hauled to an approved landfill. All water and fluids will be disposed of into the reserve pit. Salts and other chemicals produced during drilling or testing will be disposed into the reserve pit. No toxic waste or hazardous chemicals will be produced by this operation.
- E. After the rig is moved out and the well is either completed or abandoned, all waste materials will be cleaned up within 30 days. The reserve pit will be completely fenced and kept closed until it has dried. When the reserve pit is dry enough to breakout and backfill and reseeded as per BLM specifications as weather permits. In the event of a dry hole only a dry hole marker will remain.

8. Ancillary Facilities:

No airstrip, campsite or other facilities will be built as a result of the operation on this well.

Attached to Form 3160-3
Mack Energy Corporation
Pecos Federal #1
Surface 660 FSL & 1980 FEL, BHL 660 FNL & 1980 FEL
SW/4 SE/4, Sec 12 T18S R23E
Eddy County, NM

9. Well Site Layout:

- A. The drill pad layout, with elevations staked by John West Engineering, is shown in Exhibit #6. Dimensions of the pad and pits are shown. Topsoil, if available, will be stockpiled per BLM specifications. Because the pad is almost level no major cuts will be required.
- B. Diagram below shows the proposed orientation of reserve pit, working pit and access road. There is a possibility that the pits will be moved around depending on Caliche in the area. No permanent living facilities are planned, but a temporary foreman/toolpusher's trailer will be on location during the drilling operations.
- C. The reserve pit will be lined with high quality plastic sheeting (12 mil thickness).

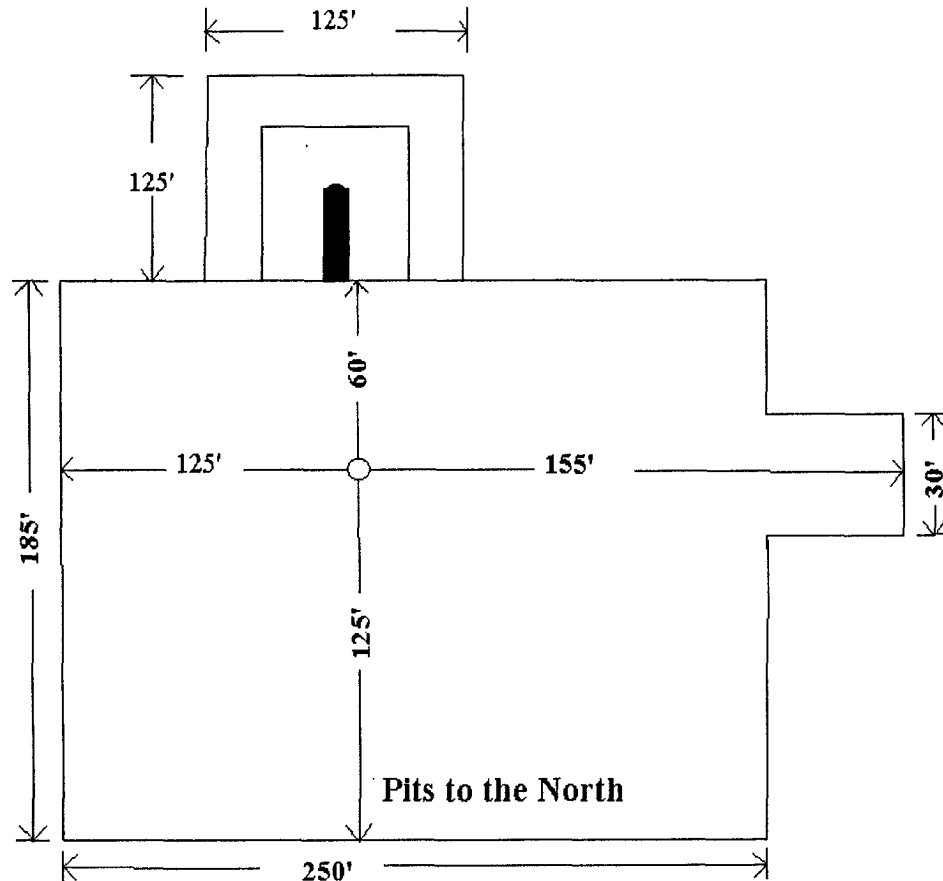


Exhibit #6

Attached to Form 3160-3
Mack Energy Corporation
Pecos Federal #1
Surface 660 FSL & 1980 FEL, BHL 660 FNL & 1980 FEL
SW/4 SE/4, Sec 12 T18S R23E
Eddy County, NM

10. Plans for Restoration of the Surface:

- A. Upon completion of the proposed operations, the pit area, after allowing drying, will be broken out and leveled. The original topsoil will be returned to the pit area, which will be leveled and contoured to as nearly the original topography as possible.
- B. The disturbed area will be revegetated by reseeding during the proper growing season with a seed mixture of native grasses as recommended by the BLM.
- C. Three sides of the reserve pit will be fenced prior to and during drilling operations. At the time that the rig is removed, the reserve pit will be fenced on the rig (fourth) side to prevent livestock from being entrapped. The fencing will remain in place until the pit area is cleaned up and leveled. No oil will be left on the surface of the fluid in the pit.
- D. Upon completion of proposed operations, if the well is completed, the reserve pit area will be treated as outlined above within the same prescribed time. Any additional caliche required for facilities will be obtained from a BLM approved caliche pit. Topsoil removed from the drill site will be used to recontour the pit area to its original natural level and reseeded as per BLM specifications.

11. Surface Ownership:

The well site is located on Fee surface. We have notified the surface owner JJ Steele Trust, C/O Albert Bach 1603 Washington Artesia, NM 88210 of the impending operations. A surface damage agreement has been negotiated.

12. Other Information:

- A. The area around the well site is grassland and the topsoil is sandy. The vegetation is native scrub grass with sagebrush.
- B. There is no permanent or live water in the immediate area.
- C. A Cultural Resources Examination has been requested and will be forwarded to your office in the near future.

13. Lessee's and Operator's Representative:

The Mack Energy Corporation representative responsible for assuring compliance with the surface use plan is as follows:


Jerry W. Sherrell
Mack Energy Corporation
P.O. Box 960
Artesia, NM 88211-0960
Phone (505) 748-1288 (office)

Attached to Form 3160-3
Mack Energy Corporation
Pecos Federal #1
Surface 660 FSL & 1980 FEL, BHL 660 FNL & 1980 FEL
SW/4 SE/4, Sec 12 T18S R23E
Eddy County, NM

CERTIFICATION

I hereby certify that I, or person under my direct supervision, have inspected the proposed drill site and access route; that I am familiar with the conditions which currently exist; that the statements made in this plan are to the best of my knowledge, true and correct; and the work associated with the operations proposed herein will be performed by Mack Energy Corporation and its contractors and subcontractors in conformity with this plan and the terms and conditions which it is approved. This statement is subject to the provisions of 18 U.S.C. 1001 for the filing of a false statement.

Date: 8-7-2006

Signed: 
Jerry W. Sherrell

Mack Energy Corporation

Hydrogen Sulfide Drilling Operation Plan

I. HYDROGEN SULFIDE TRAINING

All personnel, whether regularly assigned, contracted, or employed on an unscheduled basis, will receive training from a qualified instructor in the following areas prior to commencing drilling operations on this well:

1. The hazards and characteristics of hydrogen sulfide (H₂S)
2. The proper use and maintenance of personal protective equipment and life support systems.
3. The proper use of H₂S detectors, alarms, warning systems, briefing areas, evacuation procedures, and prevailing winds.
4. The proper techniques for first aid and rescue procedures.

In addition, supervisory personnel will be trained in the following areas:

1. The effects of H₂S on metal components. If high tensile tubular are to be used, personnel will be trained in their special maintenance requirements.
2. Corrective action and shut-in procedures when drilling or reworking a well and blowout prevention and well control procedures.
3. The contents and requirements of the H₂S Drilling Operations Plan and Public Protection Plan.

There will be an initial training session just prior to encountering a known or probable H₂S zone (within 3 days or 500 feet) and weekly H₂S and well control drills for all personnel in each crew. The initial training session shall include a review of the site specific H₂S Drilling Operations Plan and the Public Protection Plan. **The concentrations of H₂S of wells in this area from surface to TD are low enough that a contingency plan is not required.**

II. H2S SAFETY EQUIPMENT AND SYSTEMS

Note: All H2S safety equipment and systems will be installed, tested, and operational when drilling reaches a depth of 500 feet above, or three days prior to penetrating the first zone containing or reasonable expected to contain H2S.

1. Well Control Equipment:

- A. Flare line.
- B. Choke manifold.
- C. Blind rams and pipe rams to accommodate all pipe sizes with properly sized closing unit.
- D. Auxiliary equipment may include if applicable: annular preventer & rotating head.

2. Protective equipment for essential personnel:

- A. Mark II Survive air 30-minute units located in the doghouse and at briefing areas, as indicated on well site diagram.

3. H2S detection and monitoring equipment:

- A. 1 portable H2S monitors positioned on location for best coverage and response. These units have warning lights and audible sirens when H2S levels of 20 PPM are reached.

4. Visual warning systems:

- A. Wind direction indicators as shown on well site diagram (Exhibit #8).
- B. Caution/Danger signs (Exhibit #7) shall be posted on roads providing direct access to location. Signs will be painted a high visibility yellow with black lettering of sufficient size to be readable at a reasonable distance from the immediate location. Bilingual signs will be used, when appropriate. See example attached.

5. Mud program:

- A. The mud program has been designed to minimize the volume of H2S circulated to surface. Proper mud weight, safe drilling practices, and the use of H2S scavengers will minimize hazards when penetrating H2S bearing zones.

6. Metallurgy:

- A. All drill strings, casings, tubing, wellhead, blowout preventer, drilling spool, kill lines, choke manifold and lines, and valves shall be suitable for H₂S service.
- B. All elastomers used for packing and seals shall be H₂S trim.

7. Communication:

- A. Radio communications in company vehicles including cellular telephone and 2-way radio.
- B. Land line (telephone) communication at Office.

8. Well testing:

- A. Drill stem testing will be performed with a minimum number of personnel in the immediate vicinity, which are necessary to safely and adequately conduct the test. The drill stem testing will be conducted during daylight hours and formation fluids will not be flowed to the surface. All drill-stem-testing operations conducted in an H₂S environment will use the closed chamber method of testing.
- B. There will be no drill stem testing.

EXHIBIT #7

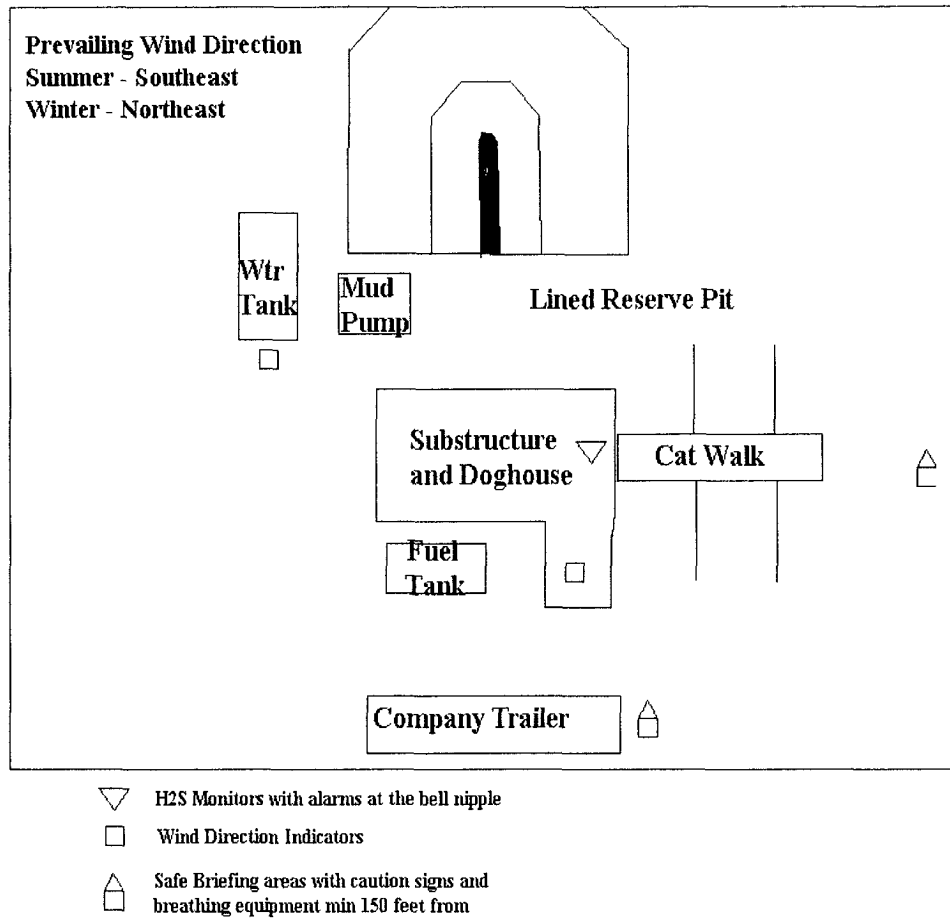
WARNING
YOU ARE ENTERING AN H₂S
AUTHORIZED PERSONNEL ONLY

- 1. BEARDS OR CONTACT LENSES NOT ALLOWED**
- 2. HARD HATS REQUIRED**
- 3. SMOKING IN DESIGNATED AREAS ONLY**
- 4. BE WIND CONSCIOUS AT ALL TIMES**
- 5. CHECK WITH MACK ENERGY FOREMAN AT OFFICE**

MACK ENERGY CORPORATION

1-505-748-1288

DRILLING LOCATION H2S SAFTY EQUIPMENT
Exhibit # 8

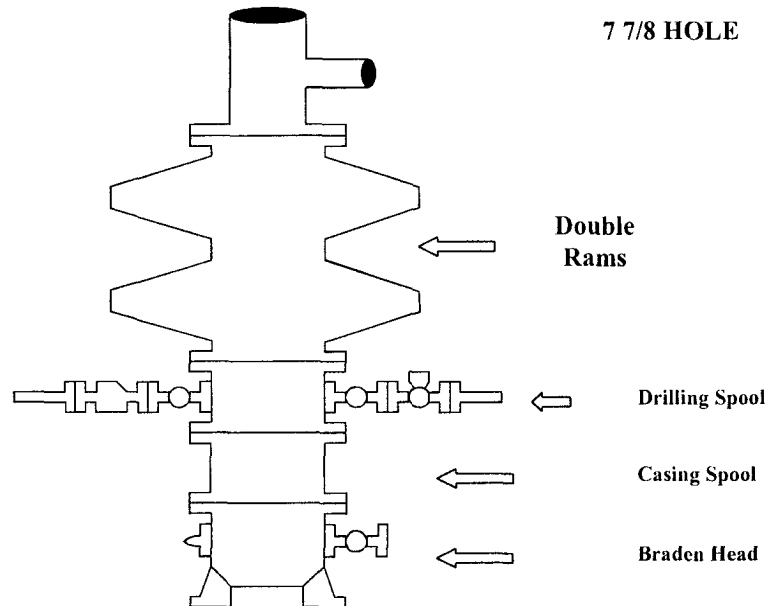


Attachment to Exhibit #9
NOTES REGARDING THE BLOWOUT PREVENTERS
Pecos Federal #1
Eddy County, New Mexico

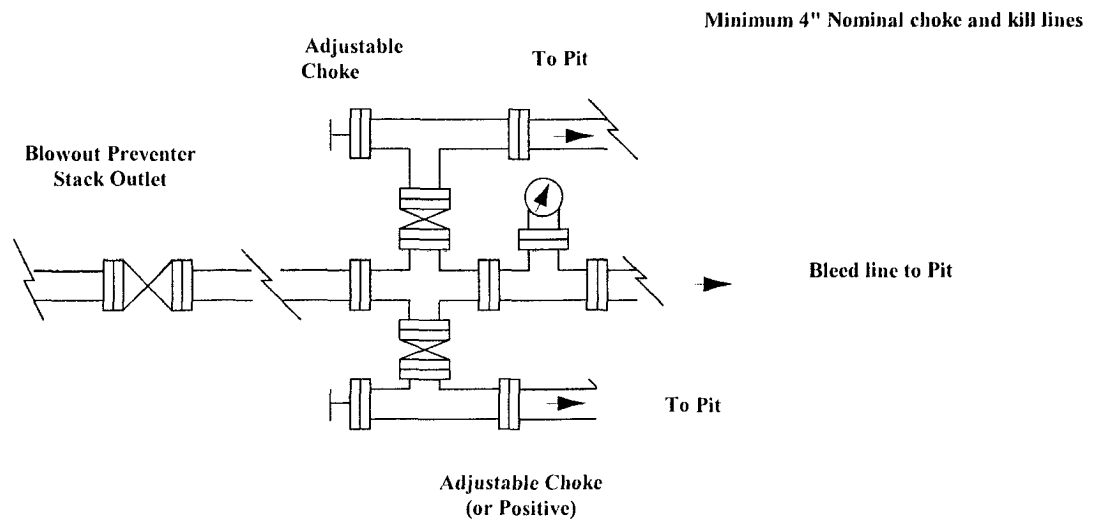
1. Drilling nipple to be so constructed that it can be removed without use of a welder through rotary table opening, with minimum I.D. equal to preventer bore.
2. Wear ring to be properly installed in head.
3. Blow out preventer and all fittings must be in good condition, 2000 psi WP minimum.
4. All fittings to be flanged.
5. Safety valve must be available on rig floor at all times with proper connections, valve to be full 2000 psi WP minimum.
6. All choke and fill lines to be securely anchored especially ends of choke lines.
7. Equipment through which bit must pass shall be at least as large as the diameter of the casing being drilled through.
8. Kelly cock on Kelly.
9. Extension wrenches and hands wheels to be properly installed.
10. Blow out preventer control to be located as close to driller's position as feasible.
11. Blow out preventer closing equipment to include minimum 40-gallon accumulator, two independent sources of pump power on each closing unit installation all API specifications.

Mack Energy Corporation

Exhibit #9 BOPE Schematic



Choke Manifold Requirement (2000 psi WP)
No Annular Required



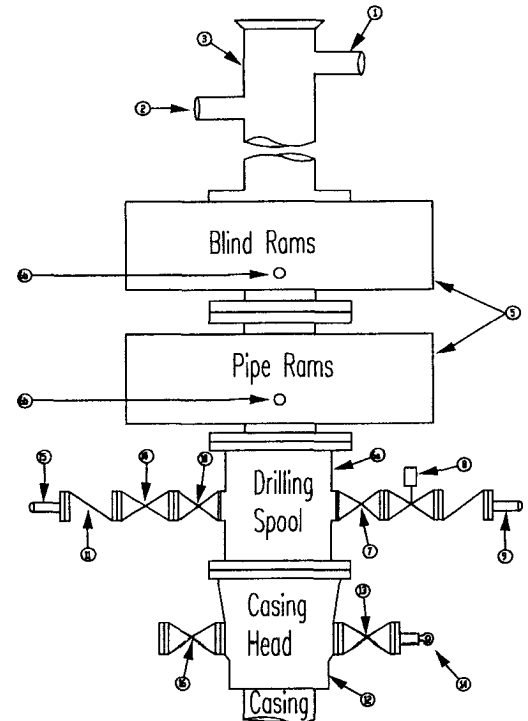
Mack Energy Corporation
Minimum Blowout Preventer Requirements
 2000 psi Working Pressure
 2 MWP
 EXHIBIT #10

Stack Requirements

NO.	Items	Min. I.D.	Min. Nominal
1	Flowline		2"
2	Fill up line		2"
3	Drilling nipple		
4	Annular preventer		
5	Two single or one dual hydraulically operated rams		
6a	Drilling spool with 2" min. kill line and 3" min choke line outlets		2" Choke
6b	2" min. kill line and 3" min. choke line outlets in ram. (Alternate to 6a above)		
7	Valve Gate Plug	3 1/8	
8	Gate valve-power operated	3 1/8	
9	Line to choke manifold		3"
10	Valve Gate Plug	2 1/16	
11	Check valve	2 1/16	
12	Casing head		
13	Valve Gate Plug	1 13/16	
14	Pressure gauge with needle valve		
15	Kill line to rig mud pump manifold		2"

OPTIONAL

16	Flanged Valve	1 13/16	
----	---------------	---------	--



CONTRACTOR'S OPTION TO FURNISH:

1. All equipment and connections above bradenhead or casinghead. Working pressure of preventers to be 2000 psi minimum.
2. Automatic accumulator (80 gallon, minimum) capable of closing BOP in 30 seconds or less and, holding them closed against full rated working pressure.
3. BOP controls, to be located near drillers' position.
4. Kelly equipped with Kelly cock.
5. Inside blowout preventer or its equivalent on derrick floor at all times with proper threads to fit pipe being used.
6. Kelly saver-sub equipped with rubber casing protector at all times.
7. Plug type blowout preventer tester.
8. Extra set pipe rams to fit drill pipe in use on location at all times.
9. Type RX ring gaskets in place of Type R.

MEC TO FURNISH:

1. Bradenhead or casing head and side valves.
2. Wear bushing. If required.

GENERAL NOTES:

1. Deviations from this drawing may be made only with the express permission of MEC's Drilling Manager.
2. All connections, valves, fittings, piping, etc., subject to well or pump pressure must be flanged (suitable clamp connections acceptable) and have minimum working pressure equal to rated working pressure of preventers up through choke valves must be full opening and suitable for high pressure mud service.
3. Controls to be of standard design and each marked, showing opening and closing position.
4. Chokes will be positioned so as not to hamper or delay changing of choke beans. Replaceable parts for adjustable choke, or bean

sizes, retainers, and choke wrenches to be conveniently located for immediate use.

5. All valves to be equipped with hand-wheels or handles ready for immediate use.
6. Choke lines must be suitably anchored.
7. Handwheels and extensions to be connected and ready for use.
8. Valves adjacent to drilling spool to be kept open. Use outside valves except for emergency.
9. All seamless steel control piping (2000 psi working pressure) to have flexible joints to avoid stress. Hoses will be permitted.
10. Casinghead connections shall not be used except in case of emergency.
11. Do not use kill line for routine fill up operations.

Mack Energy Corporation

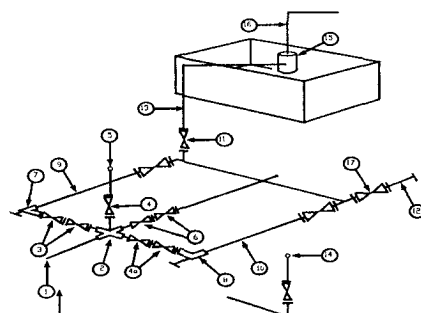
Exhibit #11

MINIMUM CHOKE MANIFOLD

3,000, 5,000, and 10,000 PSI Working Pressure

2 M will be used or greater

3 MWP - 5 MWP - 10 MWP



Mud Pit

Reserve Pit

* Location of separator optional

Below Substructure

Minimum requirements

No.		3,000 MWP			5,000 MWP			10,000 MWP		
		I.D.	NOMINAL	Rating	I.D.	Nominal	Rating	I.D.	Nominal	Rating
1	Line from drilling Spool		3"	3,000		3"	5,000		3"	10,000
2	Cross 3" x 3" x 3" x 2"			3,000			5,000			
2	Cross 3" x 3" x 3" x 2"									10,000
3	Valve Gate Plug	3 1/8"		3,000	3 1/8"		5,000	3 1/8"		10,000
4	Valve Gate Plug	1 13/16"		3,000	1 13/16"		5,000	1 13/16"		10,000
4a	Valves (1)	2 1/16"		3,000	2 1/16"		5,000	2 1/16"		10,000
5	Pressure Gauge			3,000			5,000			10,000
6	Valve Gate Plug	3 1/8"		3,000	3 1/8"		5,000	3 1/8"		10,000
7	Adjustable Choke (3)	2"		3,000	2"		5,000	2"		10,000
8	Adjustable Choke	1"		3,000	1"		5,000	2"		10,000
9	Line		3"	3,000		3"	5,000		3"	10,000
10	Line		2"	3,000		2"	5,000		2"	10,000
11	Valve Gate Plug	3 1/8"		3,000	3 1/8"		5,000	3 1/8"		10,000
12	Line		3"	1,000		3"	1,000		3"	2,000
13	Line		3"	1,000		3"	1,000		3"	2,000
14	Remote reading compound Standpipe pressure quage			3,000			5,000			10,000
15	Gas Separator		2' x 5'			2' x 5'			2' x 5'	
16	Line		4"	1,000		4"	1,000		4"	2,000
17	Valve Gate Plug	3 1/8"		3,000	3 1/8"		5,000	3 1/8"		10,000

- (1) Only one required in Class 3M
- (2) Gate valves only shall be used for Class 10 M
- (3) Remote operated hydraulic choke required on 5,000 psi and 10,000 psi for drilling.

EQUIPMENT SPECIFICATIONS AND INSTALLATION INSTRUCTION

1. All connections in choke manifold shall be welded, studded, flanged or Cameron clamp of comparable rating.
2. All flanges shall be API 6B or 6BX and ring gaskets shall be API RX or BX. Use only BX for 10 MWP.
3. All lines shall be securely anchored.
4. Chokes shall be equipped with tungsten carbide seats and needles, and replacements shall be available.
5. Choke manifold pressure and standpipe pressure gauges shall be available at the choke manifold to assist in regulating chokes. As an alternate with automatic chokes, a choke manifold pressure gauge shall be located on the rig floor in conjunction with the standpipe pressure gauge.
6. Line from drilling spool to choke manifold should be as straight as possible. Lines downstream from chokes shall make turns by large bends or 90 degree bends using bull plugged tees.

United State Department of the Interior

BUREAU OF LAND MANAGEMENT

Roswell Resource Area

P.O. Drawer 1857

Roswell, New Mexico 88202-1857

Statement Accepting Responsibility for Operations

Operator name: Mack Energy Corporation
Street or box : P.O. Box 960
City, State : Artesia, NM
Zip Code, : 88211-0960

The undersigned accepts all applicable terms, conditions, stipulations, and restrictions concerning operations conducted on the leased land or portion thereof, as described below:

Lease No.: NMNM-97849 Pecos Federal #1

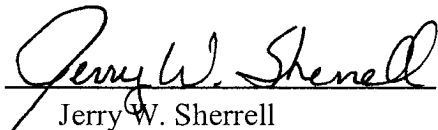
Legal Description of land: Sec 12 T18S R23E SW/4 SE/4

Formation(s) (if applicable): Penasco Draw; Wolfcamp

Bond Coverage: (State if individually bonded or another's bond)
Individually Bonded

BLM Bond File No.: NM-2151

Authorized Signature:


Jerry W. Sherrell

Title: Production Clerk

Date: 8/7/2006

SPECIAL DRILLING STIPULATIONS

THE FOLLOWING DATA IS REQUIRED ON THE WELL SIGN

Operator's Name: Mack Energy Corporation Well Name & #: Pecos Federal #1
Surface Hole Location 660 F S L & 1980 F E L; Sec. 12, T. 18 S., R. 23 E.
Bottom Hole Location 660 F N L & 1980 F E L; Sec. 12, T. 18 S., R. 23 E.
Lease #: NM97849 County: Eddy State: New Mexico

The Special stipulations check marked below are applicable to the above described well and approval of this application to drill is conditioned upon compliance with such stipulations in addition to the General Requirements. The permittee should be familiar with the General Requirements, a copy of which is available from a Bureau of Land Management office. EACH PERMITTEE HAS THE RIGHT OF ADMINISTRATIVE APPEAL TO THESE STIPULATIONS PURSUANT TO TITLE 43 CFR 3165.3 AND 3165.4.

This permit is valid for a period of one year from the date of approval or until lease expiration or termination whichever is shorter.

I. SPECIAL ENVIRONMENT REQUIREMENTS

- ☐ Lesser Prairie Chicken (stips attached) ☐ Flood plain (stips attached)
☐ San Simon Swale (stips attached) ☒ Other: Aplomado Falcon (stips Attached)

II. ON LEASE - SURFACE REQUIREMENTS PRIOR TO DRILLING

☒ The BLM will monitor construction of this drill site. Notify the ☒ Carlsbad Field Office at (505) 234-5972 ☐ Hobbs Office (505) 393-3612, at least 3 working days prior to commencing construction.

☒ Roads and the drill pad for this well must be surfaced with 6 inches of compacted caliche upon completion of well and it is determined to be a producer.

☐ All topsoil and vegetation encountered during the construction of the drill site area will be stockpiled and made available for resurfacing of the disturbed area after completion of the drilling operation. Topsoil on the subject location is approximately _____ inches in depth. Approximately _____ cubic yards of topsoil material will be stockpiled for reclamation.

☒ Other. **Reserve pits will be to the East, v-door will be to the South**

III. WELL COMPLETION REQUIREMENTS

☐ A Communitization Agreement covering the acreage dedicated to the well must be filed for approval with the BLM. The effective date of the agreement must be prior to any sales.

☒ Surface Restoration: If the well is a producer, the reserve pit(s) will be backfilled when dry, and cut-and-fill slopes will be reduced to a slope of 3:1 or less. All areas of the pad not necessary for production must be re-contoured to resemble the original contours of the surrounding terrain, and topsoil must be re-distributed and re-seeded with a drill equipped with a depth indicator (set at depth of 1/2 inch) with the following seed mixture, in pounds of Pure Live Seed (PLS), per acre. If broadcasting, the seeding rate must be doubled.

☒ A. Seed Mixture 1 (Loamy Sites)

Side Oats Grama (*Bouteloua curtipendula*) 5.0
Sand Dropseed (*Sporobolus cryptandrus*) 1.0
Plains lovegrass (*Eragrostis intermedia*) 0.5

☐ B. Seed Mixture 2 (Sandy Sites)

Sand Dropseed (*Sporobolus crptandrus*) 1.0
Sand Lovegrass (*Eragrostis trichodes*) 1.0
Plains Bristlegrass (*Setaria magrostachya*) 2.0

☐ C. Seed Mixture 3 (Shallow Sites)

Side oats Grama (*Bouteloua curtipendula*) 5.0
Green Spangletop (*Leptochloa dubia*) 2.0
Plains Bristlegrass (*Setaria magrostachya*) 1.0

☐ D. Seed Mixture 4 (Gypsum Sites)

Alkali Sacaton (*Sporobolus airoides*) 1.0
Four-Wing Saltbush (*Atriplex canescens*) 5.0

☐ OTHER SEE ATTACHED SEED MIXTURE

Seeding should be done either late in the fall (September 15 - November 15, before freeze up, or early as possible the following spring to take advantage of available ground moisture.

☐ Other

RESERVE PIT CONSTRUCTION STANDARDS

The reserve pit shall be constructed entirely in cut material and lined with 6-mil plastic.

Mineral material extracted from within the boundary of the APD during construction of the well pad and reserve pits and be used for the construction of this well pad and its immediate access road only, as long as that portion of the access road it is use on remains on-lease. Removal of any additional material from this location for construction or improvement of other well pads and other access or lease roads must first be purchased from BLM.

Reclamation: Reclamation of this type of deep pit will consist of pushing the pit walls into the pit when sufficiently dry to support track equipment. The pit liner is NOT TO BE RUPTURED to facilitate drying; a ten month period after completion of the well is allowed for drying of the pit contents.

The pit area must be contoured to the natural terrain with all contaminated drilling mud buried with at least 3 feet of clean soil. The reclaimed area will then be seeded as specified in this permit.

OPTIONAL PIT CONSTRUCTION STANDARDS

The reserve pit may be constructed in predominantly fill material if:

- (1) Lined as specified above and
- (2) A temporary or emergency pit may be constructed immediately adjacent to the reserve pit as long as the pit remains within the APD boundary. Mineral material removed from this pit may be used for the construction of this well pad only and its immediate access road, as long as that portion of the access road the material is used on remains on-lease. Removal of any material from the APD boundary for use on other well locations or roads must first be purchased from BLM.

Reclamation of the reserve pit consists of bulldozing all reserve pit contents and contaminants into the borrow pit and covering with a minimum of 3 feet of clean soil material. The entire area must be re-contoured, all trash removed, and reseeded as specified in this permit.

CULTURAL

Whether or not an archaeological survey has been completed and notwithstanding that operations are being conducted as approved, the lessee/operator/grantee shall notify the BLM immediately if previously unidentified cultural resources are observed during surface disturbing operations. From the time of the observation, the lessee/operator/grantee shall avoid operations that will result in disturbance to these cultural resources until directed to process by BLM.

TRASH PIT STIPS

All trash, junk, and other waste material shall be contained in trash cages or bins to prevent scattering and will be removed and deposited in an approved sanitary landfill. Burial on site is not permitted.

Stipulations for Drilling in Aplomado Falcon Habitat

The following well pad construction and reclamation measures will be implemented to provide for minimal long-term disturbance:

No Yuccas over 5 feet in height will be damaged by vehicular use or any other activity associated with this project.

Remove all caliche from well pads and roads that are plugged and abandoned. Reclamation will consist of disking, mulching, seeding with a drill (See seed mixture below), and application of water to encourage seed germination.

Well pad size will not exceed 300 ft. x 390 ft. (unless multiple wells are drilled from the same well pad). All unused portions of the well pad associated with producing wells will be reclaimed using the seed mixture below:

Buffalograss (<i>Buchloe dactyloides</i>)	4 lbs/acre
Blue grama (<i>Bouteloua gracilis</i>)	1 lbs/acre
Cane bluestem (<i>Bothriochloa barbinodis</i>)	5 lbs/acre
Sideoats grama (<i>Bouteloua curtipendula</i>)	5 lbs/acre
Plains bristlegrass (<i>Setaria macrostachya</i>)	6 lbs/acre

Reserve pits for drilling and disposal are not allowed unless the pit can be effectively netted to the satisfaction of the BLM. Steel tank circulation system must be used if the reserve pit is not netted.

All active raptor nests will be avoided by a minimum of 400 meters by all activities or curtail activities until fledging is complete.

All inactive raptor nests will be avoided by a minimum of 200 meters by all activities.

All roads associated with well development will not exceed 30 ft in width

CONDITIONS OF APPROVAL - DRILLING

Operator's Name: Mack Energy Corporation Well No. 1 – Pecos Federal
Location: SH: 660' FSL & 1980' FEL BH: 660' FNL & 1980' FEL sec. 12, T. 18 S., R. 23 E.
Lease: NM-97849

.....

I. DRILLING OPERATIONS REQUIREMENTS:

1. The Bureau of Land Management (BLM) is to be notified at (505) 361-2822 in sufficient time for a representative to witness:
 - A. Spudding
 - B. Cementing casing: 13-3/8 inch 9-5/8 inch 5-1/2 inch
2. Unless the production casing has been run and cemented or the well has been properly plugged, the drilling rig shall not be removed from over the hole without prior approval.
3. Include the API No. assigned to well by NMOCD on the subsequent report of setting the first casing string.
4. A Hydrogen Sulfide Contingency Plan should be activated prior to drilling in the Glorieta formation. A copy of the plan shall be posted at the drilling site.

II. CASING:

1. 13-3/8 inch surface casing should be set at approximately 450 feet, below usable water and circulate cement to the surface. If cement does not circulate to the surface, the BLM Carlsbad Field Office shall be notified and a temperature survey or cement bond log shall be run to verify the top of the cement. Remedial cementing shall be completed prior to drilling out that string.
2. 9-5/8 inch intermediate should be set at approximately 1400 feet, below usable water and circulate cement to the surface. If cement does not circulate to the surface, the BLM Carlsbad Field Office shall be notified and a temperature survey or cement bond log shall be run to verify the top of the cement. Remedial cementing shall be completed prior to drilling out that string. Fresh water mud shall be used to drill the hole for the 9-5/8 inch intermediate casing set at approximately 1400 feet.
3. Minimum required fill of cement behind the 5-1/2 inch production casing is sufficient to tie back 500 feet above the uppermost perforation in the pay zone.

III. PRESSURE CONTROL:

1. Before drilling below the 13-3/8 inch surface casing, the blowout preventer assembly shall consist of a minimum of One Annular Preventer or Two Ram-Type Preventers and a Kelly Cock/Stabbing Valve.
2. Minimum working pressure of the blowout preventer and related equipment (BOPE) shall be 2000 psi.
3. Before drilling below the 9-5/8 inch intermediate casing, the BOPE shall be tested as described in Onshore Order No. 2. Any equipment failing to test satisfactorily shall be repaired or replaced.
 - A. The results of the test will be reported to the BLM Carlsbad Field Office at 620 East Greene Street, Carlsbad, New Mexico 88220-6292.
 - B. Testing fluid must be water or an appropriate clear liquid suitable for sub-freezing temperatures. Use of drilling mud for testing is not permitted since it can mask small leaks.
 - C. Testing must be done in a safe workman like manner. Hard line connections shall be required.
 - D. A variance to test the BOPE to the reduced pressure of 1500 psi prior to drilling below the 13-3/8 inch surface casing is approved.

STANDARD STIPULATIONS FOR PERMANENT RESOURCE ROADS
CARLSBAD FIELD OFFICE

A copy of the APD and attachments, including stipulations, survey plat and/or map, will be on location during construction. BLM personnel may request to you a copy of your permit during construction to ensure compliance with all stipulations.

The holder/grantee/permittee shall hereafter be identified as the holder in these stipulations. The Authorized Officer is the person who approves the Application for Permit to Drill (APD) and/or Right-of-Way (ROW).

GENERAL REQUIREMENTS

A. The holder shall indemnify the United States against any liability for damage to life or property arising from the occupancy or use of public lands under this grant.

B. The holder shall comply with all applicable Federal laws and regulations existing or hereafter enacted or promulgated. In any event, the holder shall comply with the Toxic Substances Control Act of 1976, as amended (15 U.S.C. 2601, *et. seq.*) with regard to any toxic substances that are used, generated by or stored on the right-of-way or on facilities authorized by this grant. (See 40 CFR, Part 702-799 and especially, provisions on polychlorinated biphenyls, 40 CFR 761.1-761.193.) Additionally, any release of toxic substances (leaks, spills, etc.) in excess of the reportable quantity established by 40 CFR, Part 117 shall be reported as required by the Comprehensive Environmental Response, Compensation and Liability Act, Section 102b. A copy of any report required or requested by any Federal agency or State government as a result of a reportable release or spill of any toxic substances shall be furnished to the Authorized Officer concurrent with the filing of the reports to the involved Federal agency or State government.

C. The holder agrees to indemnify the United States against any liability arising from the release of any hazardous substance or hazardous waste (as these terms are defined in the Comprehensive Environmental Response, Compensation and Liability Act of 1980, 42 U.S.C. 9601, *et. seq.* or the Resource Conservation and Recovery Act, 42 U.S.C. 6901, *et. seq.*) on the right-of-way (unless the release or threatened release is wholly unrelated to the right-of-way holder's activity on the right-of-way). This agreement applies without regard to whether a release is caused by the holder, its agent, or unrelated third parties.

D. If, during any phase of the construction, operation, maintenance, or termination of the road, any oil or other pollutant should be discharged, impacting Federal lands, the control and total removal, disposal, and cleaning up of such oil or other pollutant, wherever found, shall be the responsibility of the holder, regardless of fault. Upon failure of the holder to control, dispose of, or clean up such discharge on or affecting Federal lands, or to repair all

damages to Federal lands resulting there from the Authorized Officer may take such measures as deemed necessary to control and cleanup the discharge and restore the area, including, where appropriate, the aquatic environment and fish and wildlife habitats, at the full expense of the holder. Such action by the Authorized Officer shall not relieve the holder of any liability or responsibility.

E. The holder shall minimize disturbance to existing fences and other improvements on public domain surface. The holder is required to promptly repair improvements to at least their former state. Functional use of these improvements will be maintained at all times.

The holder will make a documented good-faith effort to contact the owner of any improvements prior to disturbing them. When necessary to pass through a fence line, the fence shall be braced on both sides of the passageway prior to cutting of the fence.

F. The Holder shall ensure that the entire right-of-way, including the driving surface, ditching and drainage control structures, road verges and any construction sites or zones, will be kept free of the following plant species: Malta starthistle, African rue, Scotch thistle and salt cedar. The Holder agrees to comply with the following stipulations:

1. ROAD WIDTH AND GRADE

The road will have a driving surface of 14 feet (all roads shall have a minimum driving surface of 12 feet, unless local conditions dictate a different width). The maximum grade is 10 percent unless the box below is checked. Maximum width of surface disturbance from construction will be 30 feet.

Those segments of road where grade is in excess of 10% for more than 300 feet shall be designed by a professional engineer.

2. CROWNING AND DITCHING

Crowning with materials on site and ditching on one side of the road on the uphill side will be required. The road cross-section will conform to the cross section diagrams in Figure 1. If conditions dictate, ditching may be required for both sides of the road; if local conditions permit, a flat-bladed road may be considered (if these conditions exist, check the appropriate box below). The crown shall have a grade of approximately 2% (i.e., 1" crown on a 12' wide road).

Ditching will be required on both sides of the roadway as shown on the attached map or as staked in the field.

3. DRAINAGE

Drainage control shall be ensured over the entire road through the use of borrow ditches,

out-sloping, in-sloping, natural rolling topography, lead-off (turnout) ditches, culverts, and/or drainage dips.

A. All lead-off ditches shall be graded to drain water with a 1 percent minimum to 3 percent maximum ditch slope. The spacing interval for lead-off ditches shall be determined according to the following table, but may be amended depending upon existing soil types and centerline road slope (in %):

SPACING INTERVAL FOR TURNOUT DITCHES

Percent slope	Spacing interval
0% - 4%	400' - 150'
4% - 6%	250' - 125'
6% - 8%	200' - 100'
8% - 10%	150' - 75'

A typical lead-off ditch has a minimum depth of 1 foot below and a berm 6 inches above natural ground level. The berm will be on the down-slope side of the lead-off ditch. The ditch end will tie into vegetation whenever possible.

For this road the spacing interval for lead-off ditches shall be at 400 foot intervals.

B. Culvert pipes shall be used for cross drains where drainage dips or low water crossings are not feasible. The minimum culvert diameter must be 18 inches. Any culvert pipe installed shall be of sufficient diameter to pass the anticipated flow of water. Culvert location and required diameter are shown on the attached map (Further details can be obtained from the Roswell District Office or the appropriate Resource Area Office).

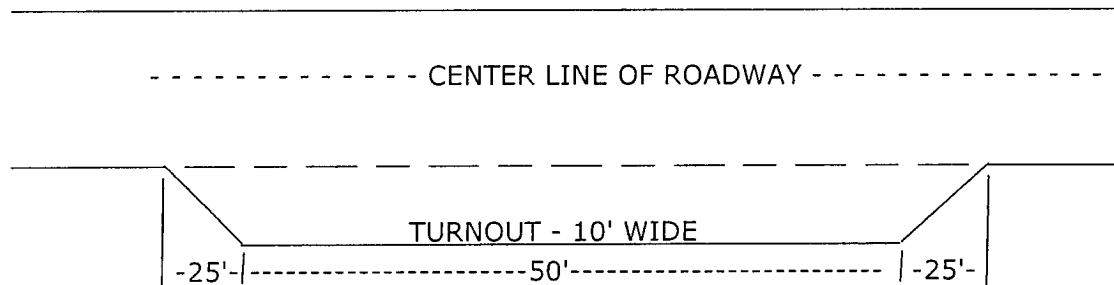
C. On road slopes exceeding 2%, drainage dips shall drain water into an adjacent lead-off ditch. Drainage dip location and spacing shall be determined by the formula:

$$\text{spacing interval} = \frac{400'}{\text{road slope in \%}} + 100'$$

$$\text{Example: 4\% slope: spacing interval} = \frac{400}{4} + 100 = 200 \text{ feet}$$

4. TURNOUTS

Unless otherwise approved by the Authorized Officer, vehicle turnouts will be required. Turnouts will be located at 2000-foot intervals, or the turnouts will be intervisible, whichever is less. Turnouts will conform to the following diagram:



STANDARD TURNOUT - PLAN VIEW

5. SURFACING

Surfacing of the road or those portions identified on the attached map may, at the direction of the Authorized Officer, be required, if necessary, to maintain traffic within the right-of-way with caliche, gravel, or other surfacing material which shall be approved by the Authorized Officer. When surfacing is required, surfacing materials will be compacted to a minimum thickness of six inches with caliche material. The width of surfacing shall be no less than the driving surface. Prior to using any mineral materials from an existing or proposed Federal source, authorization must be obtained from the Authorized Officer.

A sales contract for the removal of mineral materials (caliche, sand, gravel, fill dirt, etc.) from an authorized pit, site, or on location must be obtained from the BLM prior to using any such mineral material from public lands. Contact the BLM solid minerals staff for the various options to purchase mineral material.

6. CATTLEGUARDS

Where used, all cattleguard grids and foundation designs and construction shall meet the American Association of State Highway and Transportation Officials (AASHTO) Load Rating H-20, although AASHTO U-80 rated grids shall be required where heavy loads (exceeding H-20 loading), are anticipated (See BLM standard drawings for cattleguards). Cattleguard grid length shall not be less than 8 feet and width of not less than 14 feet. A wire gate (16-foot minimum width) will be provided on one side of the cattleguard unless requested otherwise by the surface user.

7. MAINTENANCE

The holder shall maintain the road in a safe, usable condition. A maintenance program shall include, but not be limited to blading, ditching, culvert installation, culvert cleaning, drainage installation, cattleguard maintenance, and surfacing.

8. PUBLIC ACCESS

Public access along this road will not be restricted by the holder without specific written approval being granted by the Authorized Officer. Gates or cattleguards on public lands will not be locked or closed to public use unless closure is specifically determined to be necessary and is authorized in writing by the Authorized Officer.

9. CULTURAL RESOURCES

Any cultural and/or paleontological resource (historic or prehistoric site or object) discovered by the holder, or any person working on the holder's behalf, on public or Federal land shall be immediately reported to the authorized officer. The holder shall suspend all operations in the immediate area of such discovery until written authorization to proceed is issued by the authorized officer. An evaluation of the discovery will be made by the authorized officer to determine appropriate actions to prevent the loss of significant cultural or scientific values. The holder will be responsible for the cost of evaluation and any decision as to the proper mitigation measures will be made by the authorized officer after consulting with the holder.