

DISTRICT I
1825 N. French Dr., Hobbs, NM 88240
DISTRICT II
811 South First, Artesia, NM 88210

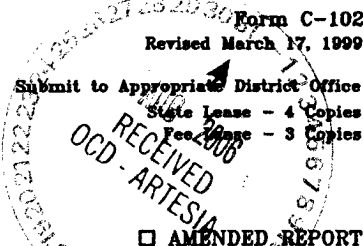
DISTRICT III
1000 Rio Brazos Rd., Aztec, NM 87410

DISTRICT IV
2040 South Pacheco, Santa Fe, NM 87505

State of New Mexico
Energy, Minerals and Natural Resources Department

OIL CONSERVATION DIVISION

2040 South Pacheco
Santa Fe, New Mexico 87504-2088



WELL LOCATION AND ACREAGE DEDICATION PLAT

API Number	Pool Code	Pool Name
	47545	NASH DRAW DELAWARE
Property Code	Property Name	Well Number
001796	POKER LAKE UNIT	221
OGRID No.	Operator Name	Elevation
001801	BASS ENTERPRISES PRODUCTION COMPANY	3182'

Surface Location

UL or lot No.	Section	Township	Range	Lot Idn	Feet from the	North/South line	Feet from the	East/West line	County
P	19	24 S	30 E		660	SOUTH	660	EAST	EDDY

Bottom Hole Location If Different From Surface

UL or lot No.	Section	Township	Range	Lot Idn	Feet from the	North/South line	Feet from the	East/West line	County

Dedicated Acres	Joint or Infill	Consolidation Code	Order No.
40	N		

NO ALLOWABLE WILL BE ASSIGNED TO THIS COMPLETION UNTIL ALL INTERESTS HAVE BEEN CONSOLIDATED
OR A NON-STANDARD UNIT HAS BEEN APPROVED BY THE DIVISION

LOT 1 - 40.77 AC.	40.66 AC.	40.65 AC.	40.65 AC.
LOT 2 - 40.87 AC.	40.69 AC.	40.68 AC.	40.66 AC.
LOT 3 - 40.94 AC.	40.69 AC.	40.68 AC.	40.67 AC.
LOT 4 - 41.06 AC.	40.73 AC.	40.70 AC.	

LAT - N32°11'51.4"
LONG - W103°54'51.5"

3181.9' 3201.0' 3180.1' 3184.3' 660'

OPERATOR CERTIFICATION

I hereby certify the the information contained herein is true and complete to the best of my knowledge and belief.

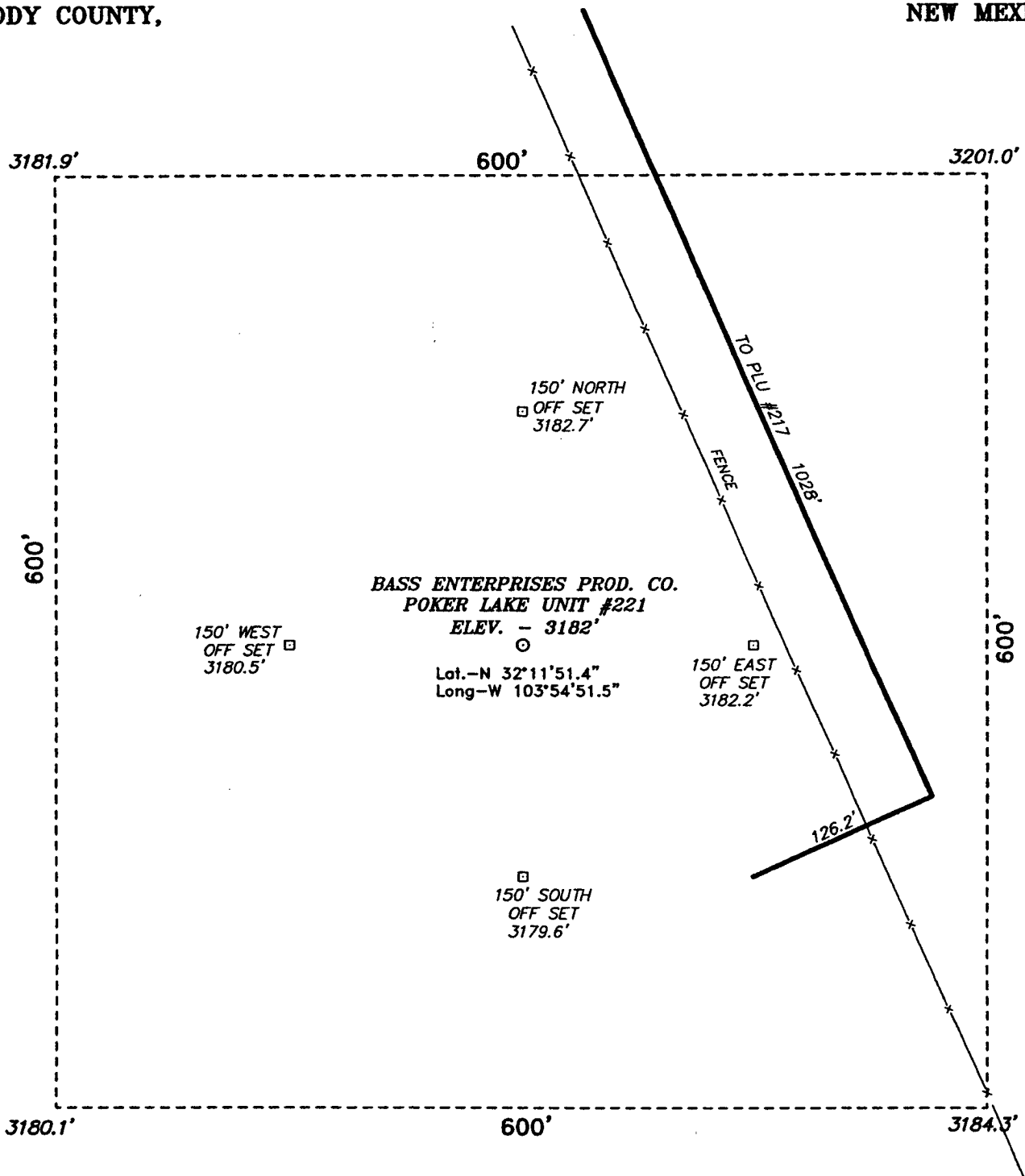
William R. Dannels
Signature
W.R. DANNELS
Printed Name
DIVISION DRILLING SUPT.
Title
Nov. 11, 2004
Date

SURVEYOR CERTIFICATION

I hereby certify that the well location shown on this plat was plotted from field notes of actual surveys made by me or under my supervision, and that the same is true and correct to the best of my belief.

APR 15 2004
Date Surveyed
NEW MEXICO
Signature & Seal of Professional Surveyor
7977
Certificate No. Gary L. Jones 7977
BASIN SURVEYS

SECTION 19, TOWNSHIP 24 SOUTH, RANGE 30 EAST, N.M.P.M.,
EDDY COUNTY, NEW MEXICO.



DIRECTIONS TO LOCATION:

FROM THE JUNCTION OF CO. RD. 746A AND CO. RD.
748, GO EASTERLY ON CO. RD. 746A FOR APPROX.
1.0 MILE TO A POINT APPROX NORTH OF THE
PROPOSED WELL PAD.

BASIN SURVEYS P.O. BOX 1786 - HOBBS, NEW MEXICO

Drawn By: K. GOAD

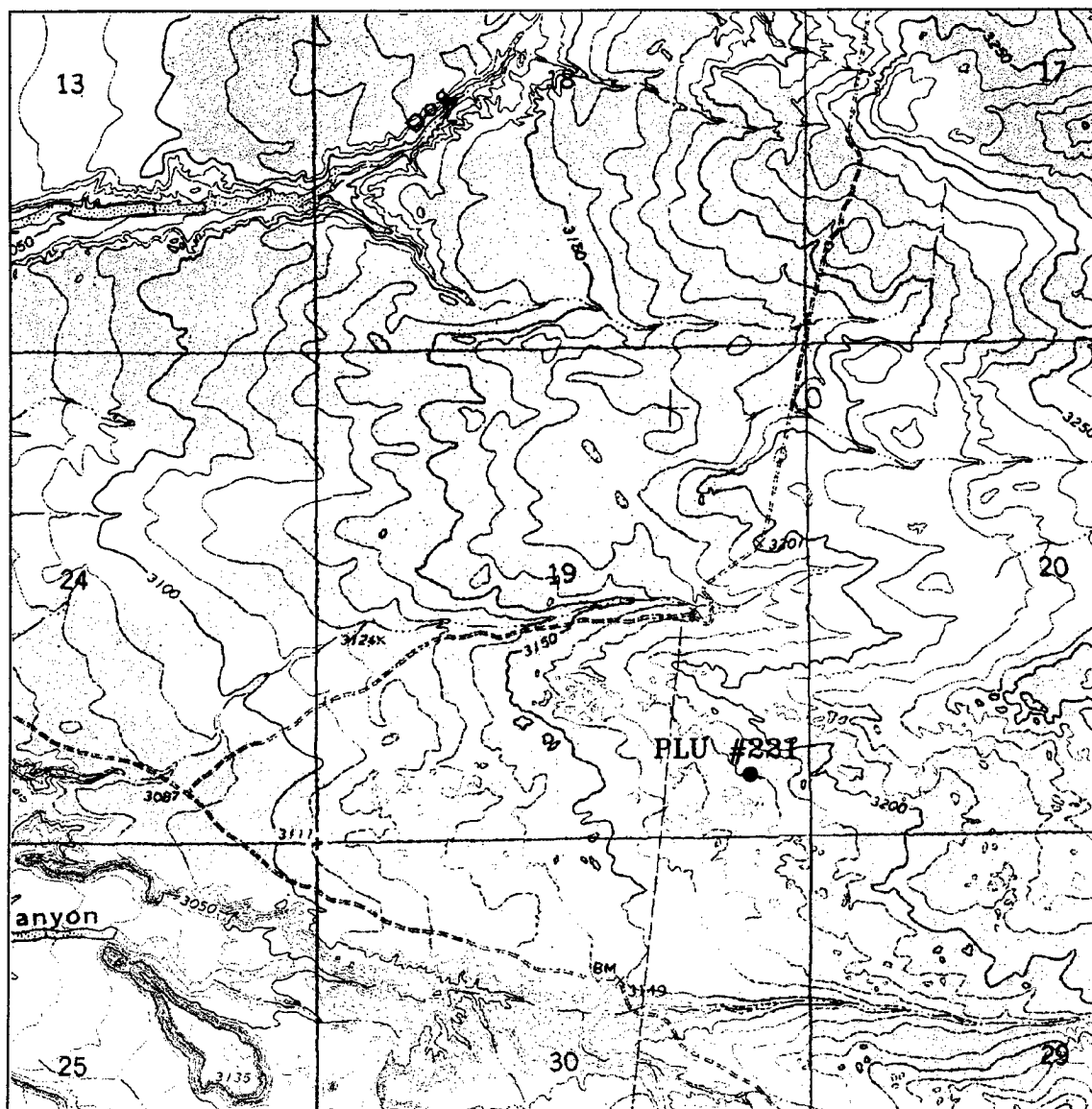
Date: 04-23-2004 Disk: KJG CD#7 - 4148A.DWG

BASS ENTERPRISES PRODUCTION CO.

REF: POKER LAKE UNIT No. 221 / Well Pad Topo

THE POKER LAKE UNIT No. 221 LOCATED 660' FROM
THE SOUTH LINE AND 660' FROM THE EAST LINE OF
SECTION 19, TOWNSHIP 24 SOUTH, RANGE 30 EAST,
N.M.P.M., EDDY COUNTY, NEW MEXICO.

Survey Date: 04-15-2004 Sheet 1 of 1 Sheets



POKER LAKE UNIT #221

Located at 660' FSL and 660' FEL
 Section 19, Township 24 South, Range 30 East,
 N.M.P.M., Eddy County, New Mexico.

basin
surveys

focused on excellence
 in the oilfield

P.O. Box 1786
 1120 N. West County Rd.
 Hobbs, New Mexico 88241
 (505) 393-7316 - Office
 (505) 392-3074 - Fax
 basinsurveys.com

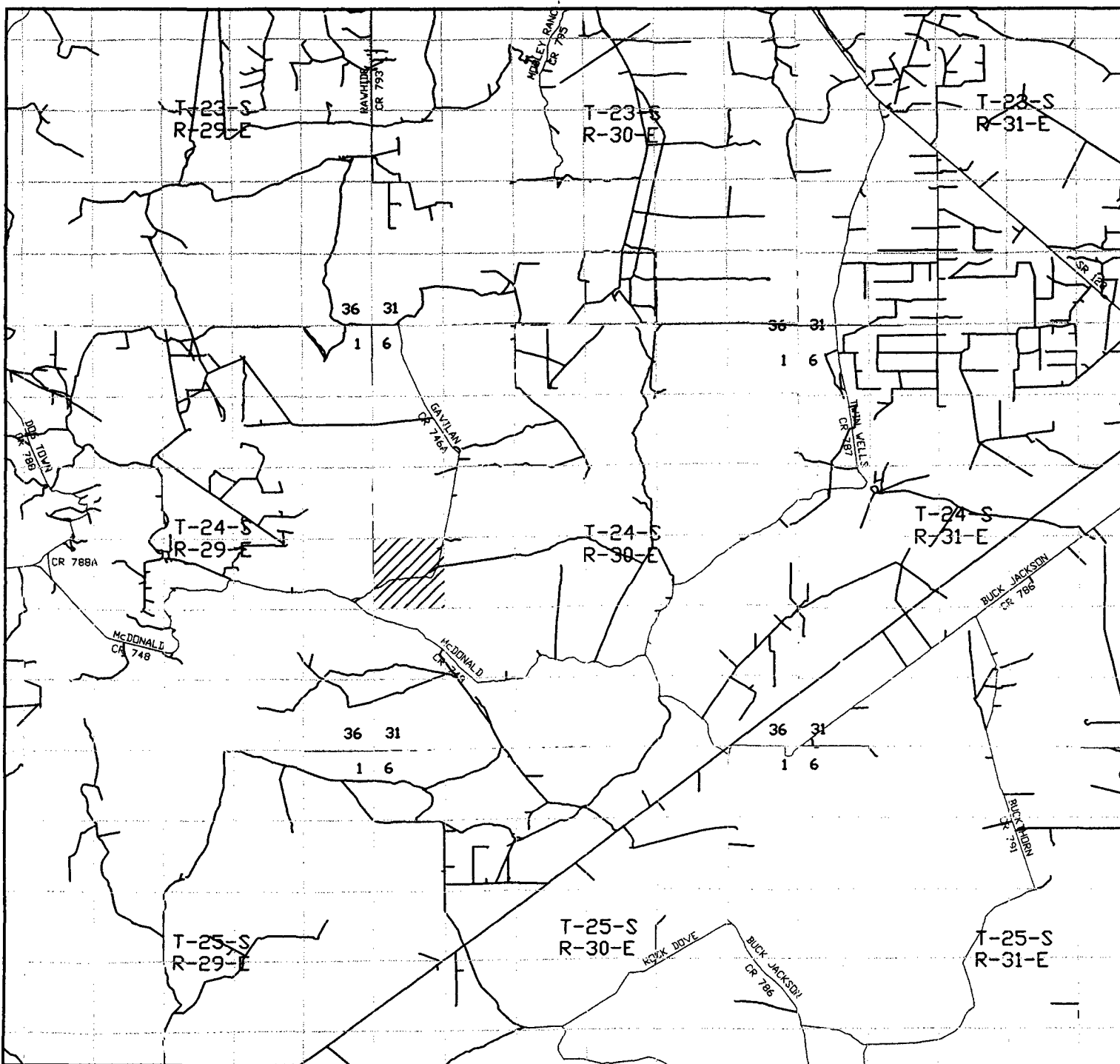
W.O. Number: 4148AA - KJG #7

Survey Date: 04-15-2004

Scale: 1" = 2000'

Date: 04-23-2004

BASS ENTERPRISES
PRODUCTION CO.



POKER LAKE UNIT #221

Located at 660' FSL and 660' FEL
Section 19, Township 24 South, Range 30 East,
N.M.P.M., Eddy County, New Mexico.

basin
surveys

focused on excellence
in the oilfield

P.O. Box 1786
1120 N. West County Rd.
Hobbs, New Mexico 88241
(505) 393-7316 - Office
(505) 392-3074 - Fax
basinsurveys.com

W.O. Number: 4148AA - KJG #7

Survey Date: 04-15-2004

Scale: 1" = 2 MILES

Date: 04-23-2004

BASS ENTERPRISES
PRODUCTION CO.