

DISTRICT I  
1825 E. French Dr., Hobbs, NM 88240

DISTRICT II  
811 South First, Artesia, NM 88210

DISTRICT III  
1000 Rio Brazos Rd., Aztec, NM 87410

DISTRICT IV  
2040 South Pacheco, Santa Fe, NM 87505

State of New Mexico  
Energy, Minerals and Natural Resources Department

Form C-102  
Revised March 17, 1999

Submit to Appropriate District Office  
State Lease - 4 Copies  
Fee Lease - 3 Copies

OIL CONSERVATION DIVISION

2040 South Pacheco  
Santa Fe, New Mexico 87504-2088

☐ AMENDED REPORT

WELL LOCATION AND ACREAGE DEDICATION PLAT

API Number 30-015-34286	Pool Code 82360	Pool Name CARLSBAD (MORROW) EAST
Property Code 35052	Property Name INDIAN DRAW DEEP 7 COM	Well Number 1
OGRID No. 001801	Operator Name BASS ENTERPRISES PRODUCTION COMPANY	Elevation 3098'

Surface Location

UL or lot No.	Section	Township	Range	Lot Idn	Feet from the	North/South line	Feet from the	East/West line	County
F	7	22 S	28 E		1980	NORTH	1980	WEST	EDDY

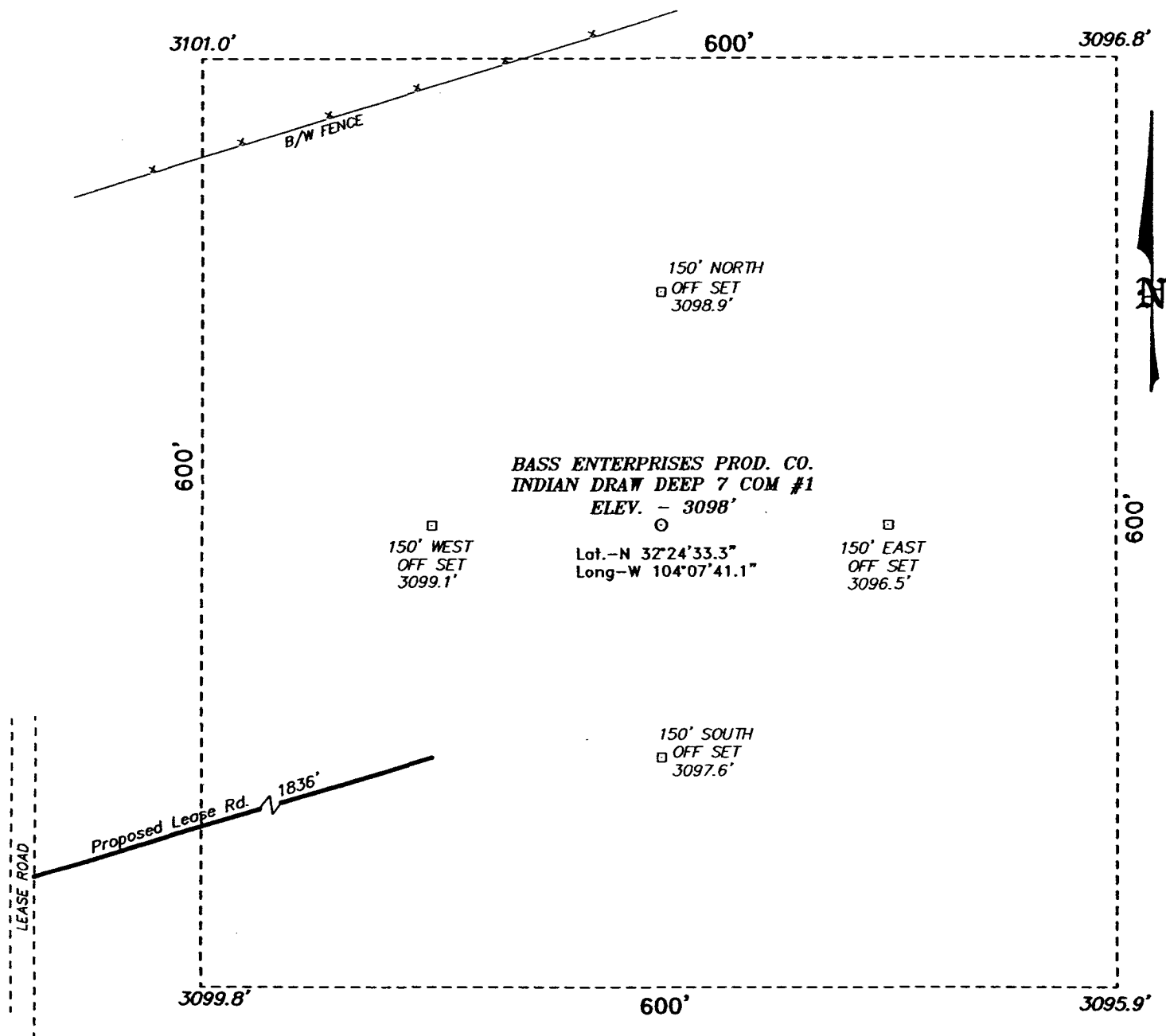
Bottom Hole Location If Different From Surface

UL or lot No.	Section	Township	Range	Lot Idn	Feet from the	North/South line	Feet from the	East/West line	County
Dedicated Acres 311.40	Joint or Infill N	Consolidation Code	Order No.						

NO ALLOWABLE WILL BE ASSIGNED TO THIS COMPLETION UNTIL ALL INTERESTS HAVE BEEN CONSOLIDATED  
OR A NON-STANDARD UNIT HAS BEEN APPROVED BY THE DIVISION

	<p><b>OPERATOR CERTIFICATION</b></p> <p>I hereby certify the the information contained herein is true and complete to the best of my knowledge and belief.</p> <p><i>[Signature]</i> Signature W.R. DANIELS Printed Name DIVISION DRILLING SUPT. Title 8/22/2005 Date</p>
	<p><b>SURVEYOR CERTIFICATION</b></p> <p>I hereby certify that the well location shown on this plat was plotted from field notes of actual surveys made by me or under my supervision and that the same is true and correct to the best of my belief.</p> <p>JULY 20, 2005 Date Surveyed Signature &amp; Seal of Professional Surveyor W.O. No. 5620 Certificate No. Gary Jones 7977 BASS SURVEYS</p>

SECTION 7, TOWNSHIP 22 SOUTH, RANGE 28 EAST, N.M.P.M.,  
EDDY COUNTY, NEW MEXICO.



**DIRECTIONS TO LOCATION:**

FROM THE JUNCTION OF US HWY 62/180 AND CO. RD. 605, GO SOUTH ON 605 FOR 4.8 MILES TO A LEASE ROAD JUST PAST A CATTLE GUARD; THENCE NORTH FOR 1.3 MILE TO PROPOSED LEASE ROAD.

**BASIN SURVEYS** P.O. BOX 1786-HOBBS, NEW MEXICO

W.O. Number: 5620

Drawn By: K. GOAD

Date: 07-22-2005 Disk: KJG CD#7 - 5620A.DWG

**BASS ENTERPRISES PRODUCTION CO.**

REF: INDIAN DRAW DEEP 7 COM No. 1 / Well Pad Topo

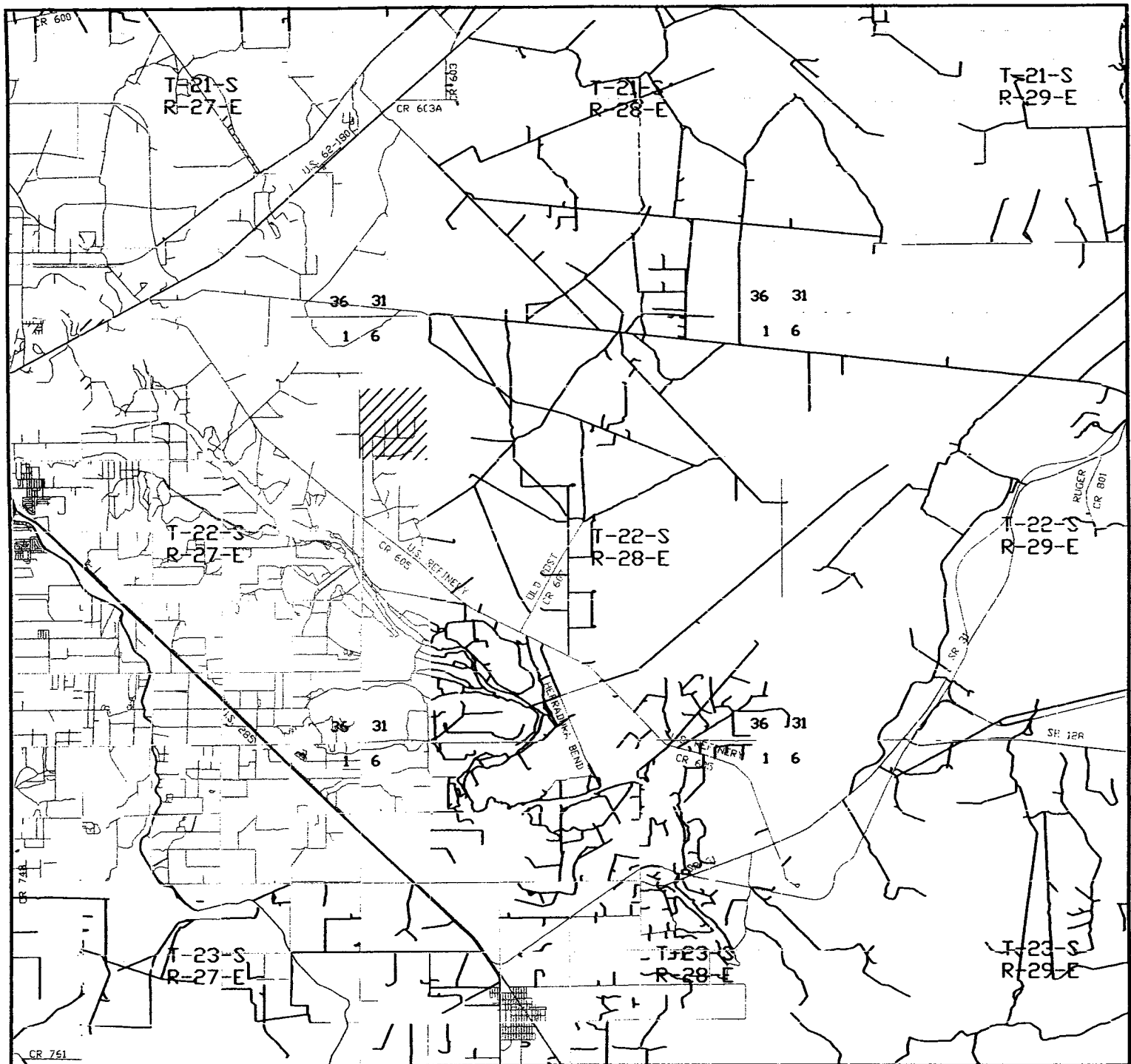
THE INDIAN DRAW DEEP 7 COM No. 1 LOCATED 1980' FROM

THE NORTH LINE AND 1980' FROM THE WEST LINE OF

SECTION 7, TOWNSHIP 22 SOUTH, RANGE 28 EAST,

N.M.P.M., EDDY COUNTY, NEW MEXICO.

Survey Date: 07-20-2005 Sheet 1 of 1 Sheets



**INDIAN DRAW DEEP 7 COM #1**  
 Located at 1980' FNL and 1980' FWL  
 Section 7, Township 22 South, Range 28 East,  
 N.M.P.M., Eddy County, New Mexico.

**basin**  
**surveys**

focused on excellence  
 in the oilfield

P.O. Box 1786  
 1120 N. West County Rd.  
 Hobbs, New Mexico 88241  
 (505) 393-7316 - Office  
 (505) 392-3074 - Fax  
 basinsurveys.com

W.O. Number: 5620AA - KJG #7

Survey Date: 07-20-2005

Scale: 1" = 2 MILES

Date: 07-22-2005

**BASS ENTERPRISES  
 PRODUCTION CO.**

