

DISTRICT I
1625 N. French Dr., Hobbs, NM 88240

DISTRICT II
811 South First, Artesia, NM 88210

DISTRICT III
1000 Rio Brazos Rd., Aztec, NM 87410

DISTRICT IV
2040 South Pacheco, Santa Fe, NM 87505

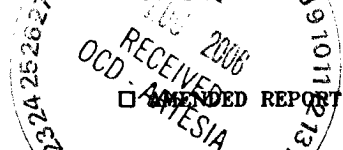
State of New Mexico
Energy, Minerals and Natural Resources Department

OIL CONSERVATION DIVISION

2040 South Pacheco
Santa Fe, New Mexico 87504-2088

Form C-102
Revised March 17, 1999

Submit to Appropriate District Office
State Lease - 4 Copies
Fee Lease - 3 Copies



WELL LOCATION AND ACREAGE DEDICATION PLAT

API Number	Pool Code 47545	Pool Name NASH DRAW - DELAWARE
Property Code 001796	Property Name POKER LAKE UNIT	Well Number 219
OGRID No. 001801	Operator Name BASS ENTERPRISES PRODUCTION COMPANY	Elevation 3157'

Surface Location

UL or lot No. K	Section 19	Township 24 S	Range 30 E	Lot Idn	Feet from the 1730	North/South line SOUTH	Feet from the 2280	East/West line WEST	County EDDY
--------------------	---------------	------------------	---------------	---------	-----------------------	---------------------------	-----------------------	------------------------	----------------

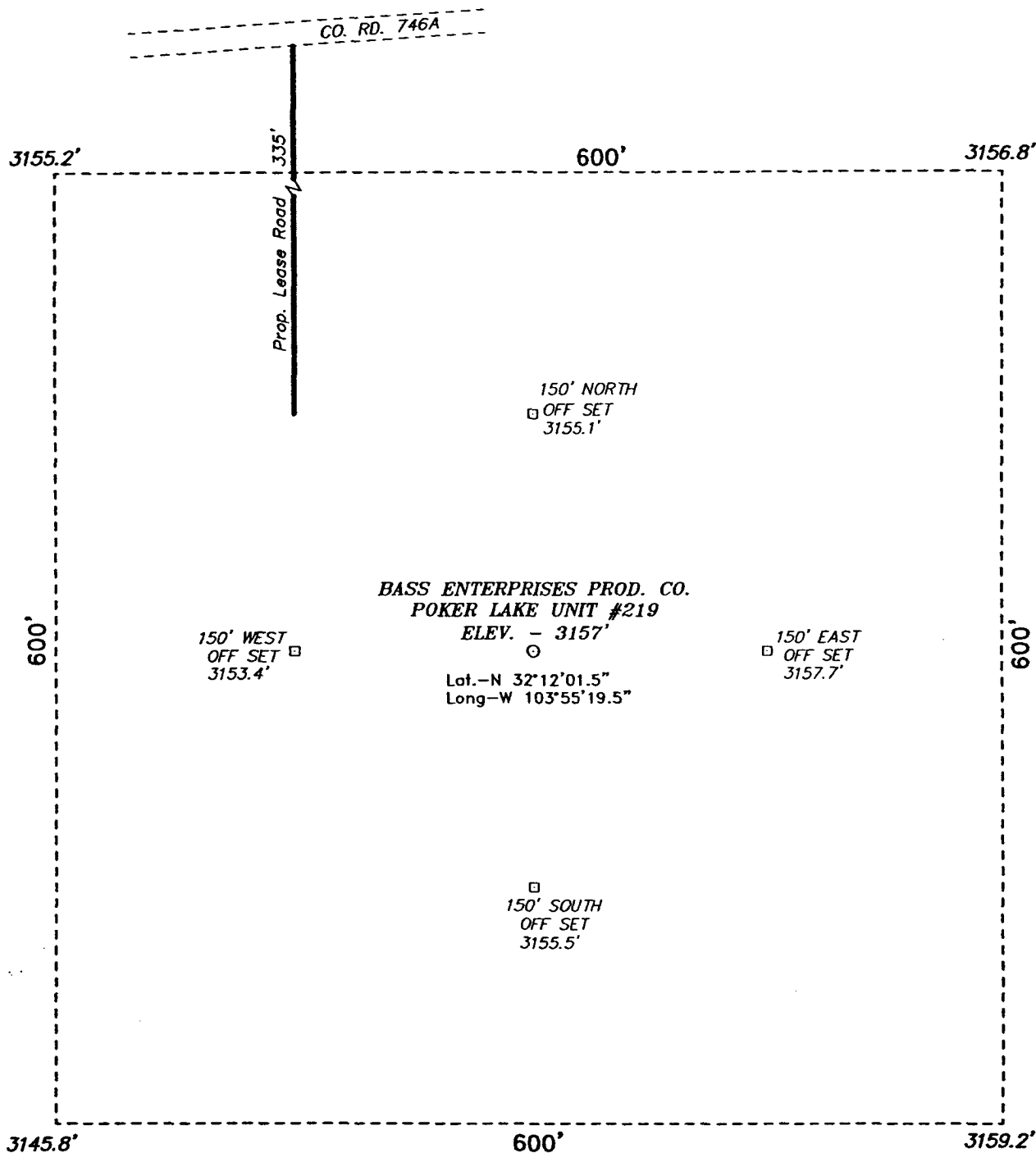
Bottom Hole Location If Different From Surface

UL or lot No.	Section	Township	Range	Lot Idn	Feet from the	North/South line	Feet from the	East/West line	County
Dedicated Acres 40	Joint or Infill N	Consolidation Code	Order No.						

NO ALLOWABLE WILL BE ASSIGNED TO THIS COMPLETION UNTIL ALL INTERESTS HAVE BEEN CONSOLIDATED
OR A NON-STANDARD UNIT HAS BEEN APPROVED BY THE DIVISION

<p>LOT 1 - 40.77 AC. 40.66 AC. 40.65 AC. 40.65 AC.</p>				<p>OPERATOR CERTIFICATION</p> <p>I hereby certify the the information contained herein is true and complete to the best of my knowledge and belief.</p> <p><i>William R. Dannels</i> Signature W.R. DANNELS Printed Name DIVISION DRILLING SUPT. Title 4/20/05 Date</p>
<p>LOT 2 - 40.87 AC. 40.69 AC. 40.68 AC. 40.66 AC.</p>				
<p>LOT 3 - 40.94 AC. 40.68 AC. 40.67 AC.</p> <p>2280'</p> <p>3156.2' 3156.8'</p> <p>3155.8' 3159.2'</p> <p>40.68 AC. 40.67 AC.</p> <p>LAT - N32°12'01.5" LONG - W103°55'19.5"</p>				
<p>LOT 4 - 41.06 AC. 40.73 AC. 40.70 AC. 40.70 AC.</p> <p>1730'</p>				
<p>SURVEYOR CERTIFICATION</p> <p>I hereby certify that the well location shown on this plat was plotted from field notes of actual surveys made by me or under my supervision, and that the same is true and correct to the best of my belief.</p> <p>MARCH 12, 2005</p> <p>Date Surveyed Signature of Gary L. Jones Professional Surveyor No. 5164 7977</p> <p>Certified by Gary L. Jones 7977</p> <p>Professional Land Surveyor</p>				

SECTION 19, TOWNSHIP 24 SOUTH, RANGE 30 EAST, N.M.P.M.,
EDDY COUNTY, NEW MEXICO.



DIRECTIONS TO LOCATION:

FROM THE JUNCTION OF CO. RD. 746A AND CO. RD. 748, GO EASTERLY ON CO. RD. 746A FOR APPROX. 0.5 MILE TO A POINT ON THE PROPOSED WELL PAD.

BASS ENTERPRISES PRODUCTION CO.

REF: POKER LAKE UNIT No. 219 / Well Pad Topo

THE POKER LAKE UNIT No. 219 LOCATED 1730' FROM
THE SOUTH LINE AND 2280' FROM THE WEST LINE OF
SECTION 19, TOWNSHIP 24 SOUTH, RANGE 30 EAST,

N.M.P.M., EDDY COUNTY, NEW MEXICO.

BASIN SURVEYS P.O. BOX 1786-HOBBS, NEW MEXICO

W.O. Number: 5164

Drawn By: K. GOAD

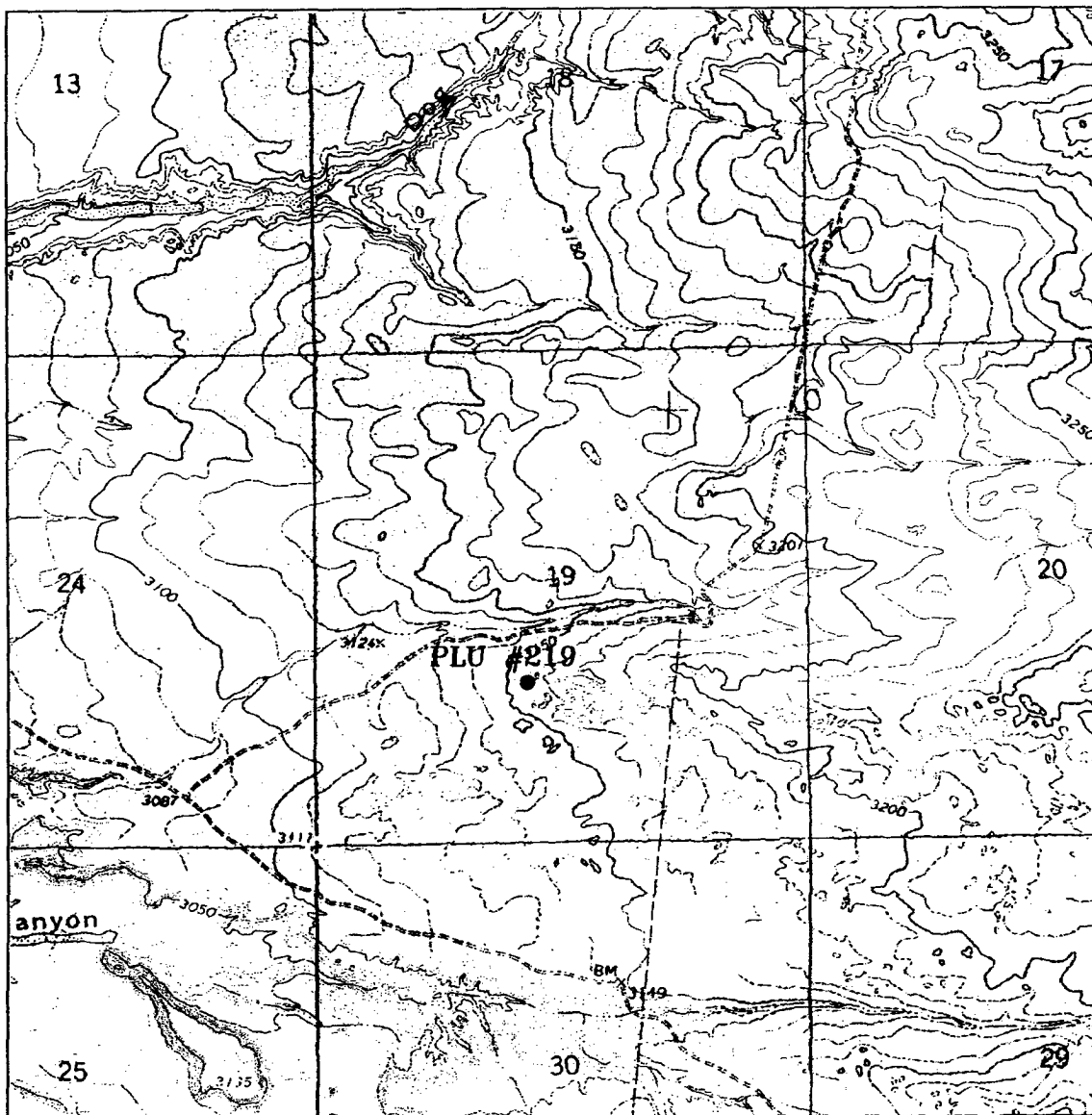
Date: 03-16-2005

Disk: KJG CD#7

- 5164A.DWG

Survey Date: 03-12-2005

Sheet 1 of 1 Sheets



POKER LAKE UNIT #219

Located at 1730' FSL and 2280' FWL

Section 19, Township 24 South, Range 30 East,
N.M.P.M., Eddy County, New Mexico.

**basin
surveys**

focused on excellence
in the oilfield

P.O. Box 1786
1120 N. West County Rd.
Hobbs, New Mexico 88241
(505) 393-7316 - Office
(505) 392-3074 - Fax
basinsurveys.com

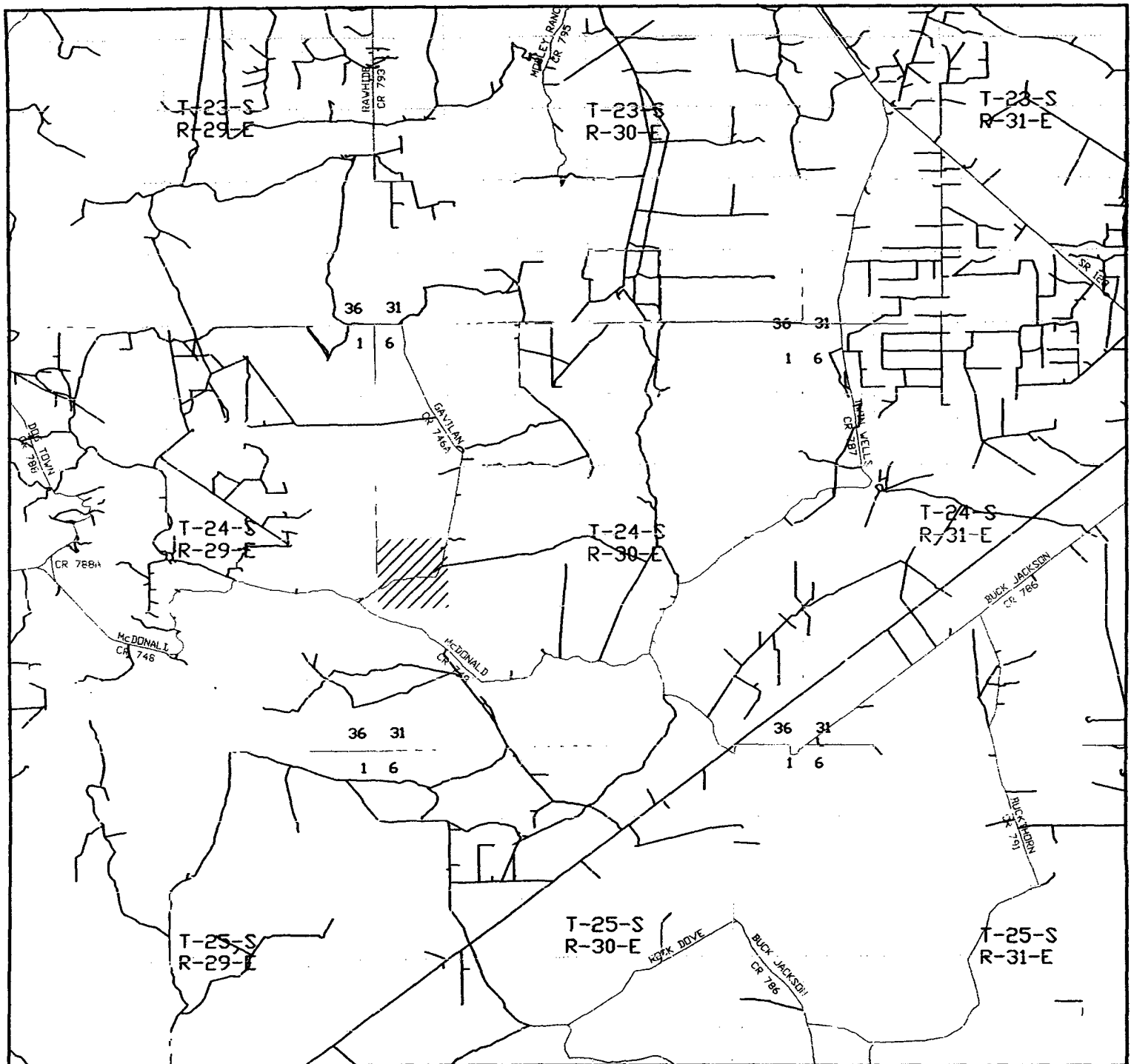
W.O. Number: 5164AA - KJG #7

Survey Date: 03-12-2005

Scale: 1" = 2000'

Date: 03-16-2005

**BASS ENTERPRISES
PRODUCTION CO.**



POKER LAKE UNIT #219

Located at 1730' FSL and 2280' FWL
 Section 19, Township 24 South, Range 30 East,
 N.M.P.M., Eddy County, New Mexico.

basin
surveys

focused on excellence
 in the oilfield

P.O. Box 1786
 1120 N. West County Rd.
 Hobbs, New Mexico 88241
 (505) 393-7316 - Office
 (505) 392-3074 - Fax
 basinsurveys.com

W.O. Number: 5164AA - KJG #7

Survey Date: 03-12-2005

Scale: 1" = 2 MILES

Date: 03-18-2005

**BASS ENTERPRISES
 PRODUCTION CO.**