

DISTRICT I
1625 N. French Dr., Hobbs, NM 88240

DISTRICT II
811 South First, Artesia, NM 88210

DISTRICT III
1000 Rio Brazos Rd., Aztec, NM 87410

DISTRICT IV
2040 South Pacheco, Santa Fe, NM 87505

State of New Mexico
Energy, Minerals and Natural Resources Department

Form C-102
Revised March 17, 1999

Submit to Appropriate District Office
State Lease - 4 Copies
Fee Lease - 3 Copies

OIL CONSERVATION DIVISION

2040 South Pacheco
Santa Fe, New Mexico 87504-2088

AMENDED REPORT

WELL LOCATION AND ACREAGE DEDICATION PLAT

API Number 30-015-34877	Pool Code 47545	Pool Name Nash Draw - Delaware, BS, Avalon, Sd
Property Code 001796	Property Name POKER LAKE UNIT	Well Number 261
OGRID No. 001801	Operator Name BASS ENTERPRISES PRODUCTION COMPANY	Elevation 3314'

Surface Location

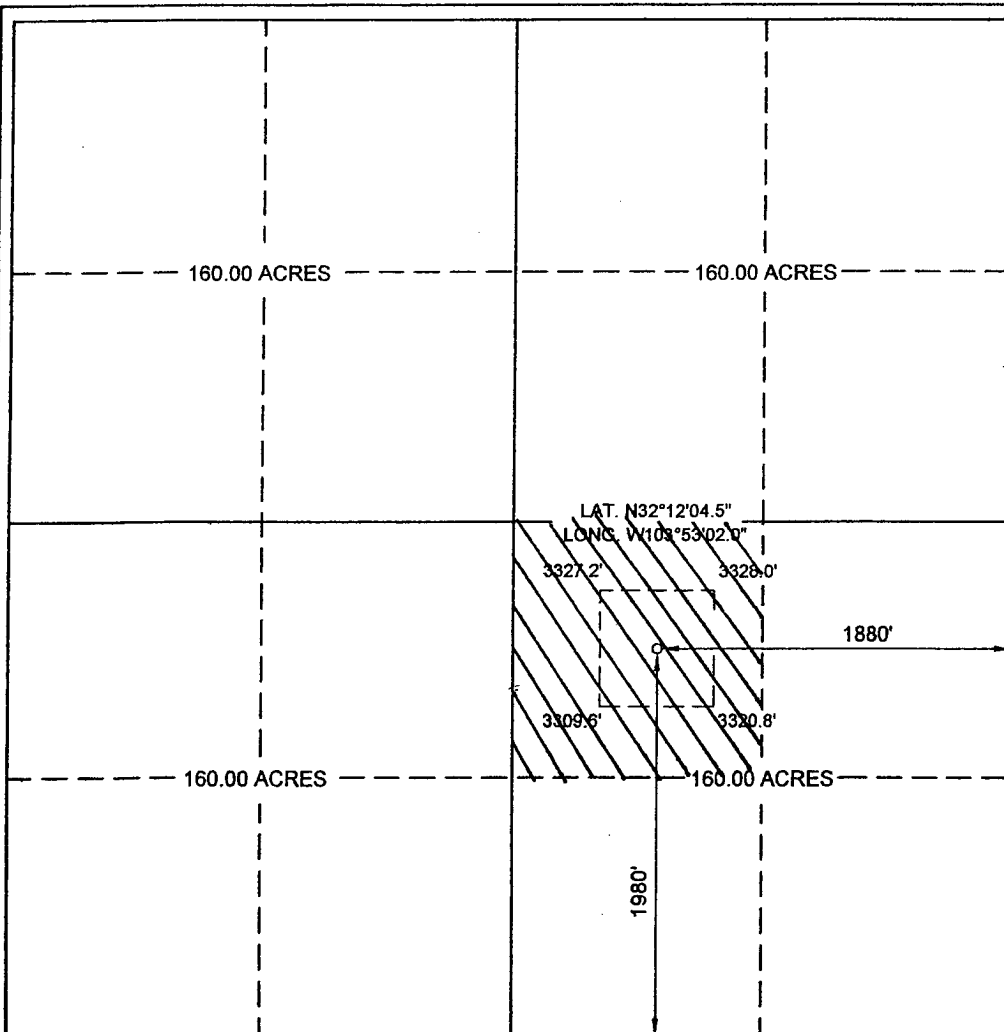
UL or lot No.	Section	Township	Range	Lot Idn	Feet from the	North/South line	Feet from the	East/West line	County
J	21	24-S	30-E		1980	SOUTH	1880	EAST	EDDY

Bottom Hole Location If Different From Surface

UL or lot No.	Section	Township	Range	Lot Idn	Feet from the	North/South line	Feet from the	East/West line	County

Dedicated Acres	Joint or Infill	Consolidation Code	Order No.
40	N		

NO ALLOWABLE WILL BE ASSIGNED TO THIS COMPLETION UNTIL ALL INTERESTS HAVE BEEN CONSOLIDATED OR A NON-STANDARD UNIT HAS BEEN APPROVED BY THE DIVISION



OPERATOR CERTIFICATION

I hereby certify the the information contained herein is true and complete to the best of my knowledge and belief.

William R. Dannels
Signature

W.R. DANNELS
Printed Name

DIVISION DRILLING SUPT.
Title

3-17-06
Date

SURVEYOR CERTIFICATION

I hereby certify that the well location shown on this plat was plotted from field notes of actual surveys made by me or under my supervision, and that the same is true and correct to the best of my belief.

JANUARY 19, 2006
Date Surveyed

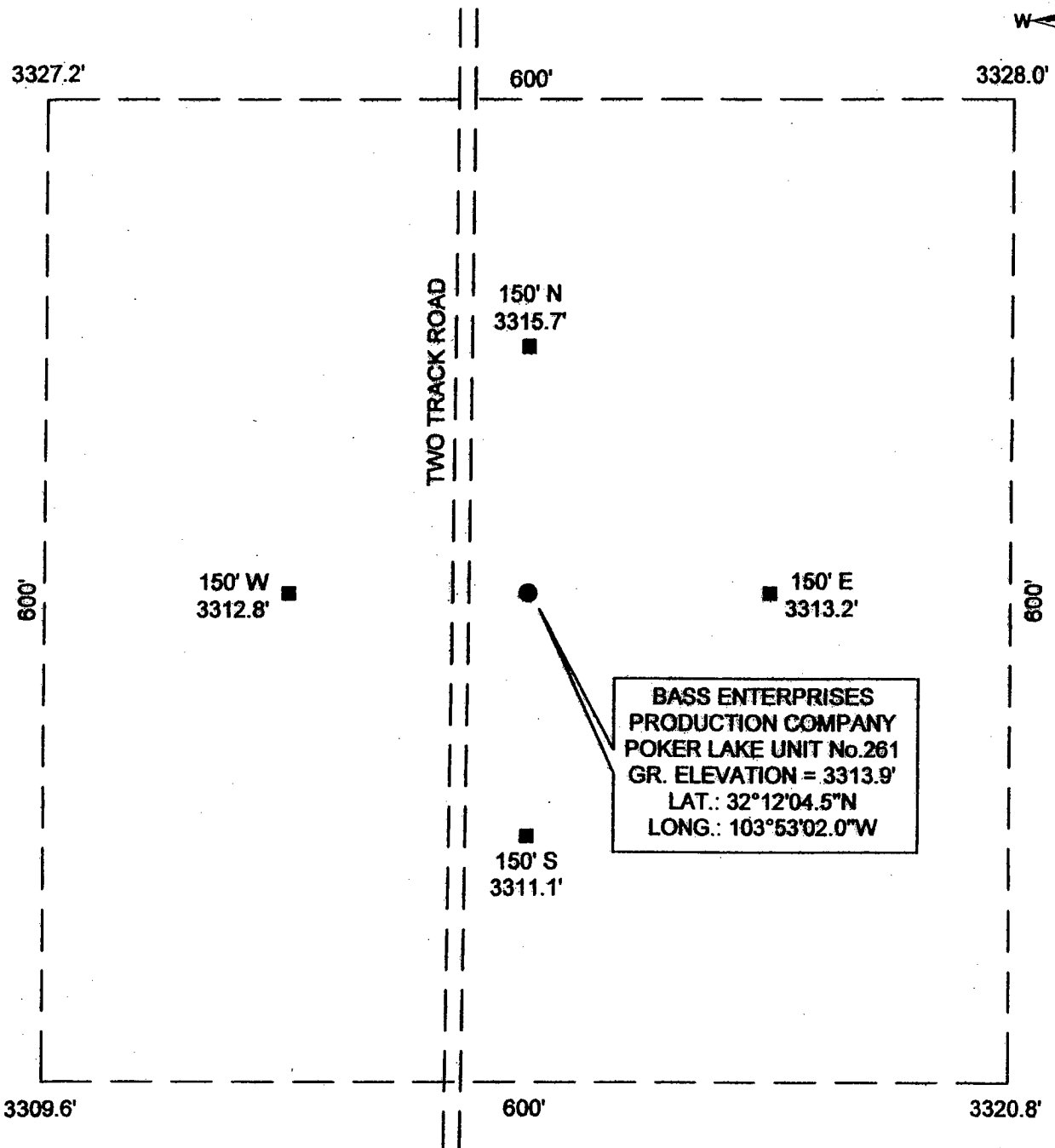
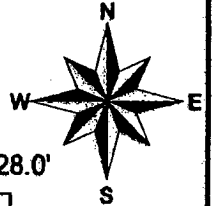
GARY L. JONES
Signature & Seal
Professional Surveyor

Professional Surveyor No. 6074

Certificate No. 7977

BASIN SURVEYS

SECTION 21, TOWNSHIP 24 SOUTH, RANGE 30 EAST, N.M.P.M.
 EDDY COUNTY, NEW MEXICO



BASS ENTERPRISES
 PRODUCTION COMPANY
 POKER LAKE UNIT No.261
 GR. ELEVATION = 3313.9'
 LAT.: 32°12'04.5"N
 LONG.: 103°53'02.0"W



DIRECTIONS TO LOCATION:
 FROM THE INTERSECTION OF COUNTY ROAD 748 (MCDONALD ROAD) AND COUNTY ROAD 746A (GAVILIAN ROAD) GO EAST ON 748 3.4 MILES TO A LEASE ROAD TWO TRACK, GO NORTH 1.1 MILES TO LOCATION FLAG.

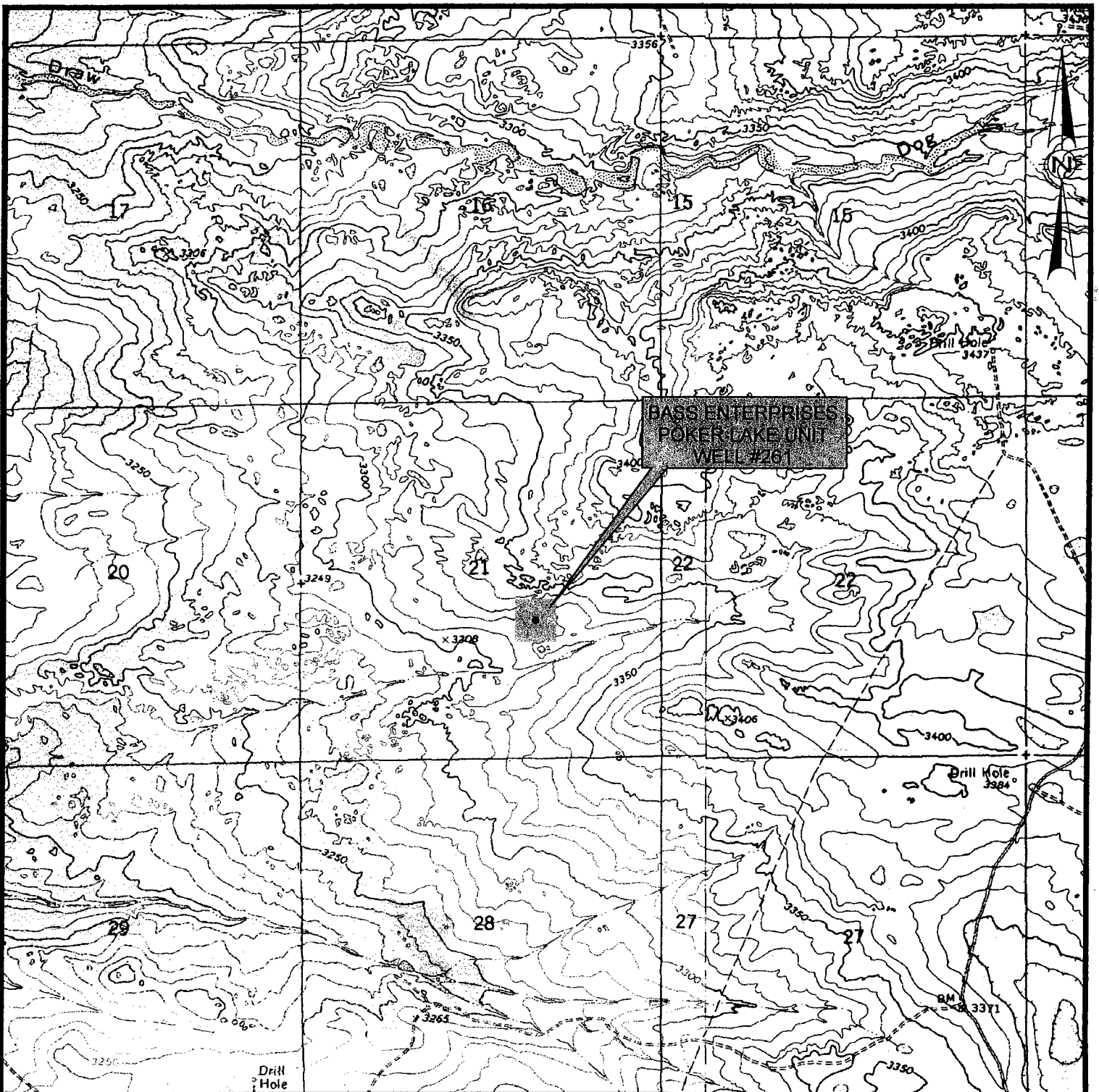
BASS ENTERPRISES PRODUCTION COMPANY
 POKER LAKE UNIT WELL No. 261 / WELL PAD TOPO
 THE POKER LAKE UNIT No. 261 LOCATED
 1980' F.S.L. AND 1880' F.E.L., SECTION 21
 TOWNSHIP 24 SOUTH, RANGE 30 EAST, N.M.P.M.
 EDDY COUNTY, NEW MEXICO

BASIN SURVEYS P.O. BOX 1786 -HOBBS, NEW MEXICO


W.O. Number: 6074 S.STANFIELD

Date: 1-23-2006 Disk:C:\DRAWINGS\BASS\BASS6074-1

Survey Date: 1-19-2006 Sheet 1 of 1 Sheets



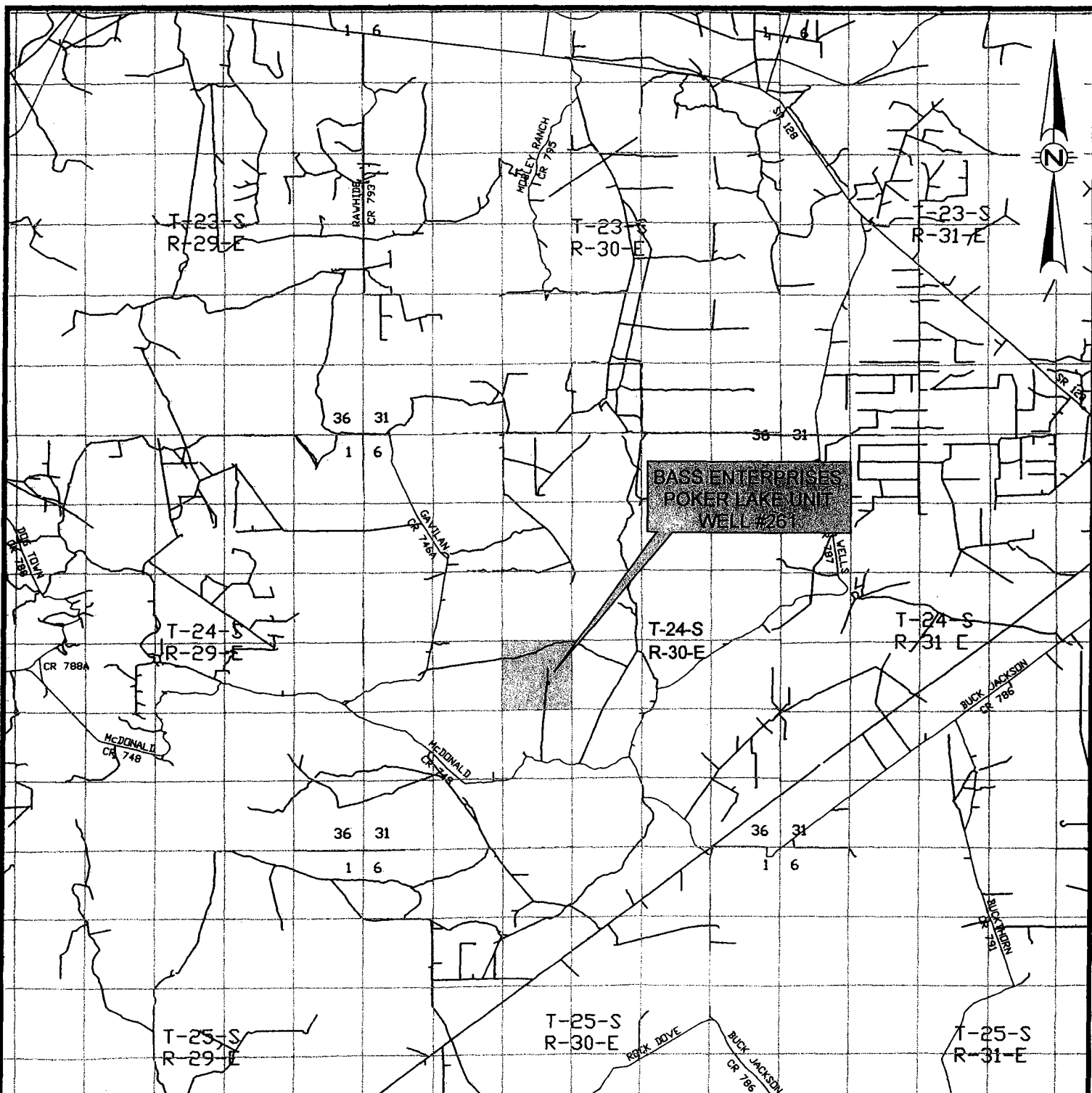
BASS ENTERPRISES POKER LAKE UNIT #261
 1980' F.S.L. & 1880' F.E.L., SECTION 21,
 TOWNSHIP 24 SOUTH, RANGE 30 EAST, N.M.P.M.
 EDDY COUNTY, NEW MEXICO


Bassin surveys
 focused on excellence
 in the oilfield


P.O. Box 1786
 1120 N. West County Rd.
 Hobbs, New Mexico 88241
 (505) 393-7316 - Office
 (505) 392-3074 - Fax
 bassinurveys.com

W.O. Number:	SS-C:\DRAWINGS\BASS\BASS6074-1
Survey Date:	JANUARY 19, 2006
Scale:	1" = 2000'
Date:	JANUARY 23, 2006

**BASS
 ENTERPRISES**



BASS ENTERPRISES POKER LAKE UNIT #261
 1980' F.S.L. & 1880' F.E.L., SECTION 21,
 TOWNSHIP 24 SOUTH, RANGE 30 EAST, N.M.P.M.
 EDDY COUNTY, NEW MEXICO


basin surveys
 focused on excellence
 in the oilfield

P.O. Box 1786
 1120 N. West County Rd.
 Hobbs, New Mexico 88241
 (505) 393-7316 - Office
 (505) 392-3074 - Fax
 basin-surveys.com

W.O. Number:	SS-C:\DRAWINGS\BASS\BASS6074-1
Survey Date:	JANUARY 19, 2006
Scale:	1" = 2000'
Date:	JANUARY 23, 2006

**BASS
 ENTERPRISES**