

DISTRICT I
1825 N. French Dr., Hobbs, NM 88240

DISTRICT II
811 South First, Artesia, NM 88210

DISTRICT III
1000 Rio Brazos Rd., Aztec, NM 87410

DISTRICT IV
2040 South Pacheco, Santa Fe, NM 87505

State of New Mexico
Energy, Minerals and Natural Resources Department

OIL CONSERVATION DIVISION

2040 South Pacheco
Santa Fe, New Mexico 87504-2088

Form C-102
Revised March 17, 1999

Submit to Appropriate District Office
State Lease - 4 Copies
Fee Lease - 3 Copies

☐ AMENDED REPORT

WELL LOCATION AND ACREAGE DEDICATION PLAT

API Number 30-015-34399	Pool Code 76140	Pool Name DUBLIN RANCH MORROW (GAS)
Property Code 001776	Property Name BIG EDDY UNIT	Well Number 154
OGRID No. 001801	Operator Name BEPCO, L.P.	Elevation 3131'

Surface Location

UL or lot No.	Section	Township	Range	Lot Idn	Feet from the	North/South line	Feet from the	East/West line	County
A	15	22 S	28 E		660	NORTH	660	EAST	EDDY

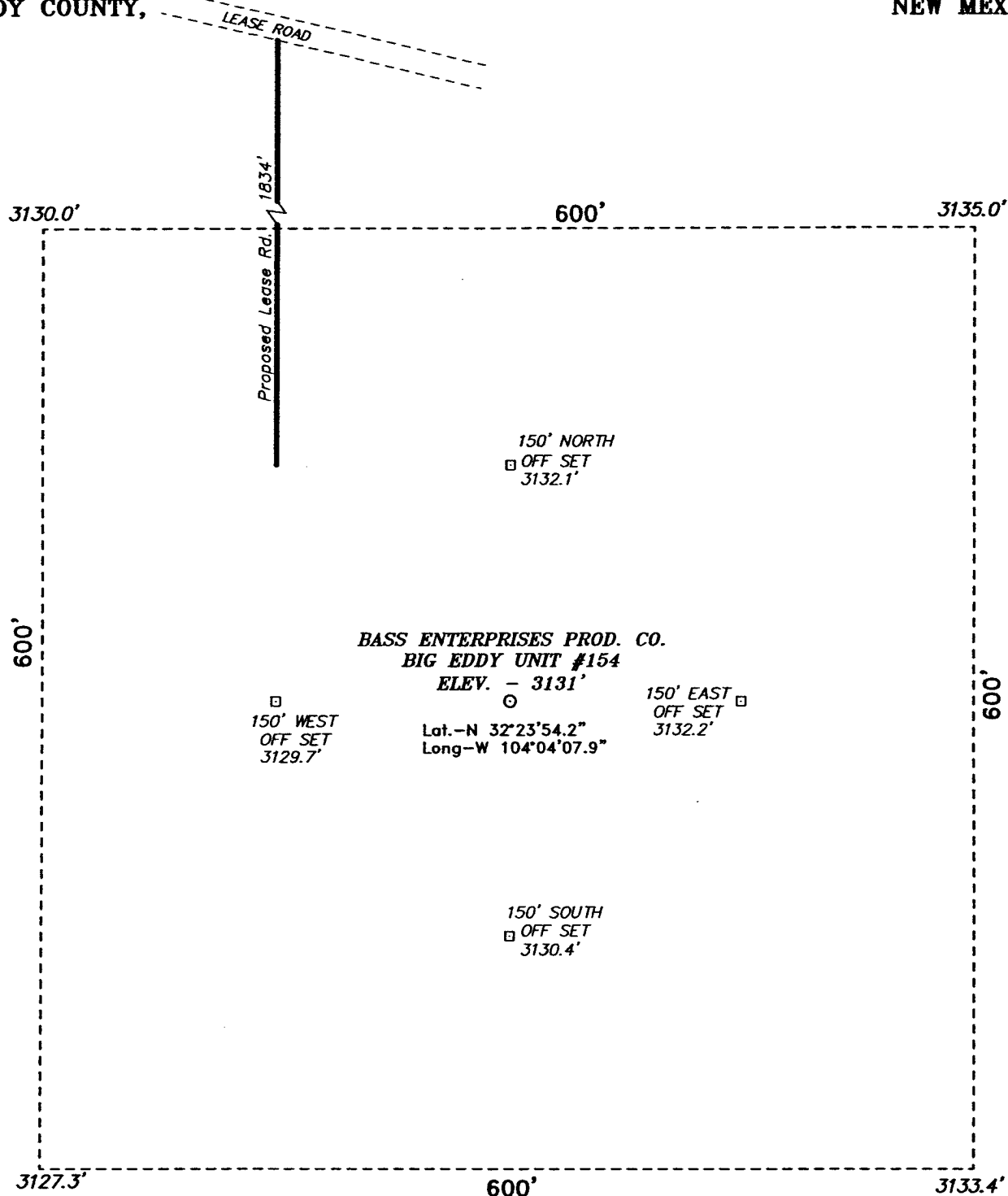
Bottom Hole Location If Different From Surface

UL or lot No.	Section	Township	Range	Lot Idn	Feet from the	North/South line	Feet from the	East/West line	County
Dedicated Acres 320	Joint or Infill N	Consolidation Code	Order No.						

NO ALLOWABLE WILL BE ASSIGNED TO THIS COMPLETION UNTIL ALL INTERESTS HAVE BEEN CONSOLIDATED
OR A NON-STANDARD UNIT HAS BEEN APPROVED BY THE DIVISION

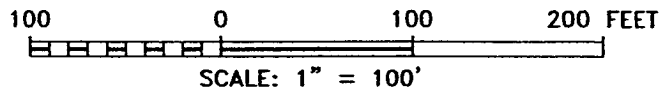
	OPERATOR CERTIFICATION I hereby certify the the information contained herein is true and complete to the best of my knowledge and belief. Signature W.R. DANNELS Printed Name DIVISION DRILLING SUPT. Title 9/7/2005 Date
	SURVEYOR CERTIFICATION I hereby certify that the well location shown on this plat was plotted from field notes of actual surveys made by me or under my supervision, and that the same is true and correct to the best of my belief. JULY 20, 2005 Date Surveyed Signature of Seal of Professional Surveyor W.O. No. 562 Certificate No. Gary Jones 7977 BASIN SURVEYS

SECTION 15, TOWNSHIP 22 SOUTH, RANGE 28 EAST, N.M.P.M.,
EDDY COUNTY, NEW MEXICO.



DIRECTIONS TO LOCATION:

FROM THE JUNCTION OF US HWY 62/180 AND CO.
RD. 603, GO WEST 62/180 FOR 0.2 MILE TO A
LEASE ROAD; THENCE SOUTH ON LEASE ROAD FOR
4.1 MILES TO A "T"; THENCE GO EAST FOR 0.2 MILE
PAST IMC BOOSTER STATION; THENCE SOUTH ON
LEASE ROAD FOR 1.4 MILE TO A 3 WAY
INTERSECTION AND TAKE ROAD EAST FOR 1.1 MILE TO
PROPOSED LEASE ROAD.



BASIN SURVEYS P.O. BOX 1786-HOBBS, NEW MEXICO

W.O. Number: 5621 Drawn By: K. GOAD

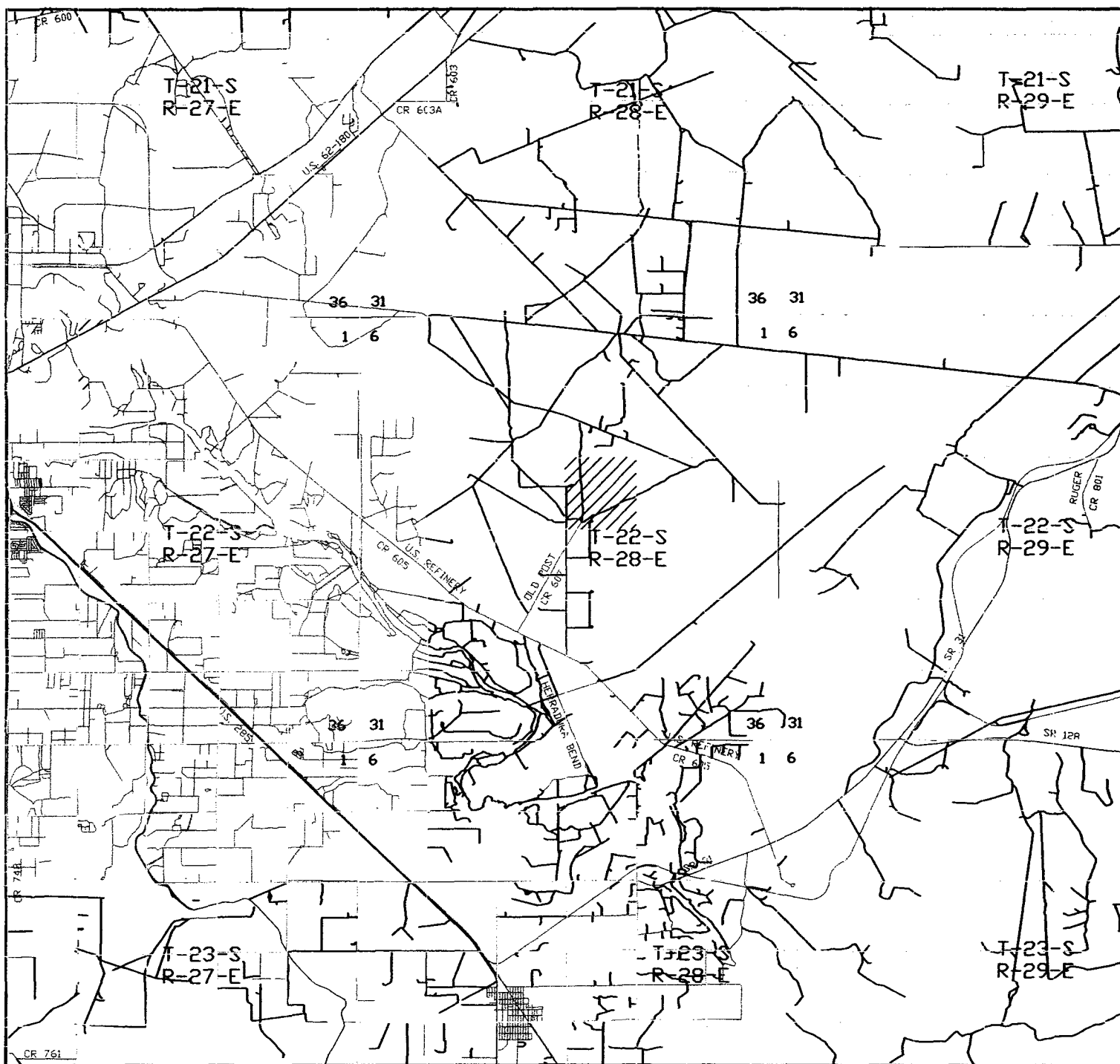
Date: 07-22-2005 Disk: KJG CD#7 - 5621A.DWG

BASS ENTERPRISES PRODUCTION CO.

REF: BIG EDDY UNIT No. 154 / Well Pad Topo

THE BIG EDDY UNIT No. 154 LOCATED 660' FROM
THE NORTH LINE AND 660' FROM THE EAST LINE OF
SECTION 15, TOWNSHIP 22 SOUTH, RANGE 28 EAST,
N.M.P.M., EDDY COUNTY, NEW MEXICO.

Survey Date: 07-20-2005 Sheet 1 of 1 Sheets



BIG EDDY UNIT #154

Located at 660' FNL and 660' FEL
 Section 15, Township 22 South, Range 28 East,
 N.M.P.M., Eddy County, New Mexico.

basin
surveys

focused on excellence
 in the oilfield

P.O. Box 1786
 1120 N. West County Rd.
 Hobbs, New Mexico 88241
 (505) 393-7316 - Office
 (505) 392-3074 - Fax
 basinsurveys.com

W.O. Number: 5621AA - KJG #7

Survey Date: 07-20-2005

Scale: 1" = 2 MILES

Date: 07-22-2005

**BASS ENTERPRISES
 PRODUCTION CO.**