

125

OCD-ARTESIA UNITED STATES DEPARTMENT OF THE INTERIOR BUREAU OF LAND MANAGEMENT

SUBMIT IN DUPLICATE (Other instructions on side)

RECEIVED OCD-ARTESIA

Form approved. Budget Bureau No. 1004-0136 Expires August 31, 1985

ATS-07-105

APPLICATION FOR PERMIT TO DRILL, DEEPEN, OR PLUG BACK

1a. TYPE OF WORK DRILL [X] DEEPEN [] PLUG BACK []

b. TYPE OF WELL OIL WELL [X] GAS WELL [] OTHER [] SINGLE ZONE [X] MULTIPLE ZONE []

2. NAME OF OPERATOR BURNETT OIL CO., INC (817/332-5108)

3. ADDRESS OF OPERATOR 801 CHERRY STREET, SUITE 1500, FORT WORTH, TEXAS 76102

4. LOCATION OF WELL (Report location clearly and in accordance with any State requirements.*) At surface UNIT O, 740' FSL, 1750' FEL ROSWELL CONTROLLED WATER BASIN At proposed prod. zone SAME AS SURFACE

14. DISTANCE IN MILES AND DIRECTION FROM NEAREST TOWN OR POST OFFICE* APPROXIMATELY 6 MILES EAST OF LOCO HILLS, NEW MEXICO

16. NO. OF ACRES IN LEASE 560

18. DISTANCE FROM PROPOSED LOCATION* TO NEAREST WELL, DRILLING, COMPLETED, OR APPLIED FOR, ON THIS LEASE, FT. 660'

21. ELEVATIONS (Show whether DF, RT, GR, etc.) 3722' GR

5. LEASE DESIGNATION AND SERIAL NO. NMLC029339A

6. IF INDIAN, ALLOTTEE OR TRIBE NAME

7. UNIT AGREEMENT NAME

8. FARM OR LEASE NAME JACKSON A

9. WELL NO. #36 API# 30-015- 35284

10. FIELD AND POOL, OR WILDCAT CEDAR LAKE

11. SEC., T., R., M., OR BLK. AND SURVEY OR AREA SEC 13, T17S, R30E

12. COUNTY OR PARISH EDDY 13. STATE NM

17. NO. OF ACRES ASSIGNED TO THIS WELL 40

20. ROTARY OR CABLE TOOLS ROTARY

22. APPROX. DATE WORK WILL START* DECEMBER 1, 2006

23. PROPOSED CASING AND CEMENTING PROGRAM

Table with 5 columns: SIZE OF HOLE, SIZE OF CASING, WEIGHT PER FOOT, SETTING DEPTH, QUANTITY OF CEMENT. Rows include 14 7/8" hole and 8 3/4" hole.

(If water flows are encountered cementing program may vary.)

A 14 7/8" hole will be drilled to Rustler Anhydrite. We will set 9 5/8" casing @ this depth & cement to surface After an 18 hour cement wait, casing & BOP will be tested before drill out of the shoe. An 8 3/4" hole will be drilled to approx. 5400' to effectively test the Cedar Lake Yeso interval. The 7" casing will be run and set @ TD and cemented to 600' above highest potential producing horizon. We will perforate and treat the productive intervals of the well will be drilled as recommended by our service company and we will perforate and treat productiv ase recommended by service company.

If earthen pits are used in association with the drilling of this well, an OCD pit permit must be obtained prior to pit construction.

IN ABOVE SPACE DESCRIBE PROPOSED PROGRAM: If proposal is to deepen or plug back, give data on present productive zone and proposed new productive zone. If proposal is to drill or deepen directionally, give pertinent data on subsurface locations and measured and true vertical depths. Give blowout preventer program, if any.

24. SIGNED Mark A Jarbole TITLE ENGINEERING MANAGER DATE 11/9/06

(This space for Federal or State office use)

PERMIT NO. APPROVAL DATE

APPROVED BY /s/ James A. Amos TITLE FIELD MANAGER DATE DEC 13 2006

CONDITIONS OF APPROVAL, IF ANY:

SEE ATTACHED FOR CONDITIONS OF APPROVAL APPROVAL SUBJECT TO GENERAL REQUIREMENTS AND SPECIAL STIPULATIONS APPROVAL FOR 1 YEAR

*See Instructions On Reverse Side

State of New Mexico

Energy, Minerals and Natural Resources Department

DISTRICT I
1625 N. FRENCH DR., BOBBS, NM 86240

DISTRICT II
1301 W. GRAND AVENUE, ARTESIA, NM 88210

DISTRICT III
1000 Rio Brazos Rd., Aztec, NM 87410

DISTRICT IV
1220 S. ST. FRANCIS DR., SANTA FE, NM 87505

OIL CONSERVATION DIVISION
1220 SOUTH ST. FRANCIS DR.
Santa Fe, New Mexico 87505

Form C-102
Revised October 12, 2005
Submit to Appropriate District Office
State Lease - 4 Copies
Fee Lease - 3 Copies

WELL LOCATION AND ACREAGE DEDICATION PLAT

AMENDED REPORT

API Number 30-015-35284	Pool Code 96831	Pool Name Cedar Lake Gloriana Yeso
Property Code 020767	Property Name JACKSON A	Well Number 36
OGRID No. 003080	Operator Name BURNETT OIL COMPANY	Elevation 3722'

Surface Location

UL or lot No.	Section	Township	Range	Lot Idn	Feet from the	North/South line	Feet from the	East/West line	County
0	13	17-S	30-E		740	SOUTH	1750	EAST	EDDY

Bottom Hole Location if Different From Surface

UL or lot No.	Section	Township	Range	Lot Idn	Feet from the	North/South line	Feet from the	East/West line	County

Dedicated Acres	Joint or Infill	Consolidation Code	Order No.
40			

NO ALLOWABLE WILL BE ASSIGNED TO THIS COMPLETION UNTIL ALL INTERESTS HAVE BEEN CONSOLIDATED OR A NON-STANDARD UNIT HAS BEEN APPROVED BY THE DIVISION

<p>GEODETIC COORDINATES NAD 27 NME</p> <p>Y=665597.5 N X=626352.3 E</p> <p>LAT.=32.829138° N LONG.=103.921995° W</p>	<p>OPERATOR CERTIFICATION</p> <p>I hereby certify that the information herein is true and complete to the best of my knowledge and belief, and that this organization either owns a working interest or unleased mineral interest in the land including the proposed bottom hole location or has a right to drill this well at this location pursuant to a contract with an owner of such mineral or working interest, or to a voluntary pooling agreement or a compulsory pooling order heretofore entered by the division.</p> <p>Mark A. Jacoby 11/9/06 Signature Date</p> <p>Mark A. Jacoby Printed Name</p>
	<p>SURVEYOR CERTIFICATION</p> <p>I hereby certify that the well location shown on this plat was plotted from field notes of actual surveys made by me or under my supervision, and that the same is true and correct to the best of my belief.</p> <p>OCTOBER 25, 2006</p>
	<p>Date Surveyed _____ JR</p> <p>Signature & Seal of Professional Surveyor</p> <p>GARY EIBSON NEW MEXICO 06.11.1660</p>
	<p>Certificate No. GARY EIBSON 12641</p>



DRILLING PLAN

BURNETT OIL CO., INC.
LEASE NO. LC 029339A
JACKSON A LEASE, WELL NO.36
UNIT O 740' FSL, 1750' FEL
SECTION 13, TOWNSHIP 17 SOUTH, RANGE 30 EAST
EDDY COUNTY, NEW MEXICO

(A) DRILLING PROGRAM

(1) Estimated tops of geologic markers:

Alluvium.....Surface
Anhydrite.....273'
Salt.....501'
Base Salt.....1295'
Yates.....1406'
Seven Rivers.....1720'
Grayburg.....2725'
San Andres.....3080'
Glorieta.....4331'

(2) Estimated depths of producing formations:

Fresh water.....None
Saltwater flows..(?)*
Oil and Gas.....1377'**,2718'**

* As waterflows, if any, are encountered, their depth will be recorded, and drilling will continue to total depth. Multiple stage cementers will be placed in the production casing string to enable us to confine the waterflows to their respective depths by cementing.

** Oil and gas bearing zones, if any, will be determined by log analysis, and will be confined by cementing; subsequently perforated, stimulated and produced in a conventional manner.

(3) Blowout Preventer Specifications:

A 2000 PSI Hydril unit with hydraulic closing equipment. (See Exhibit E schematic). The preventer will be tested before drilling out below surface pipe setting depth. The exact description of the preventer and related equipment will depend on the successful contractor, who has not yet been selected. No high pressure hydrocarbon zones are anticipated.

(4) Supplementary drilling equipment information:

Not available at this time.

(5) Supplementary casing program information:

- a. Surface casing: Surface casing will consist of new 9-5/8" OD 32.30# H40 OR 36# J-55 ST&C R3 pipe and will be run into a 14-7/8" hole with notched Texas Pattern shoe on bottom, insert float valve in first collar, Two(2) centralizers around shoe joint and first collar. Bottom three (3) joints will be thread locked. Setting depth will be +/- 400' in the Rustler Anhydrite, depending on where a suitable casing seat can be found. Cement will be circulated back to the surface. Initial cement volume will be calculated to be 100% excess of the calculated annular volume between the 9-5/8" casing and the hole. **If circulation of cement to the surface is not achieved due to lost circulation, we would like permission (without having to call BLM) to fill this annular space using sufficient rat hole mix to bring cement to surface per BLM specification.** Eighteen (18) hours WOC will be allowed as per NMOCD. Casing will be tested to 1000 PSI before drilling out.

- b. Production casing: Production casing will consist of new 7" OD 23# J55 R3 8rd LT&C pipe being run to total depth with float shoe on bottom, float collar in first collar, centralizers throughout intervals and above and below any multiple stage cementers, and be cemented with sufficient volume to bring top of cement 600' above the top of the highest potential producing horizon. If water flow is encountered, we will cement from TD back to the stage cementer, open stage cementer, cement from stage cementer with sufficient volume of Class C or equivalent to bring cement up to at least 600' above the highest potential producing horizon, then balancing hydrostatic weight of the cement by adjusting the flow of water to surface through the 7" casing, enabling the 2nd stage of cement to set up. Casing will be shut in after twelve (12) hours. If there is no flow of water to surface around the 7" casing, we will cement the water flow proper through the stage cementer with +/- 1500 sacks. In case the 2nd stage is not successful in shutting off any annular flow, we will repeat the 2nd stage until successful. After drilling out and testing the casing to 2000 PSI, a cement bond log will be run to evaluate the cement job.

- (6) Mud program: Native mud (red beds and shale) will be used to total depth. The surface hole will be drilled with fresh water and lost circulation materials as needed. The remaining hole will be drilled with brine water with necessary additives.

- (7) Logging program: If no water flow(s) are encountered, we will run Neutron Litho density-DLL logs. If water flow(s) are encountered, no open hole logging will be attempted, and after casing is set, cased hole GR/CN logs will be run. No other testing or coring is anticipated.

- (8) Abnormal pressures or hazards: No abnormal pressures or potential hazards are anticipated. The maximum anticipated bottom hole pressure is 1000#. The maximum anticipated bottom hole temperature is 91°F.
- (9) Other facets of the operation to be pointed out:
None.

(B) HYDROGEN SULFIDE DRILLING PROGRAM

(1) Hydrogen Sulfide Training

All personnel, whether regularly assigned, contracted, or employed on an unscheduled basis, will receive training from a qualified instructor in the following areas prior to commencing drilling operations on this well:

- a. The hazards and characteristics of Hydrogen Sulfide (H₂S).
- b. The proper use and maintenance of personal protective equipment and life support systems.
- c. The proper use of H₂S detectors, alarms, warning systems, briefing areas, evacuation procedures and prevailing wind.
- d. The proper techniques for first aid and rescue procedures.

In addition, supervisory personnel will be trained in the following areas:

- a. The effects of H₂S on metal components. If high tensile tubulars are to be used, personnel will be trained in their special maintenance requirements.
- b. Corrective action and shut-in procedures when drilling or reworking a well, blowout prevention and well control procedures.
- c. The contents and requirements of the H₂S Drilling Operations Plan and the Public Protection Plan (if applicable.)

There will be an initial training session just prior to encountering a known or probable H₂S zone (within 3 days or 500 feet) and weekly H₂S and well control drills for all personnel in each crew. The initial training session shall include a review of the site specific H₂S Drilling Operations Plan and the Public Protection Plan (if applicable). This plan shall be available at the wellsite. All personnel will be required to carry documentation that they have received the proper training.

(2) H2S SAFETY EQUIPMENT AND SYSTEMS

Note: all H2S safety equipment and systems will be installed, tested and operational when drilling reaches a depth of 500 feet above, or three days prior to penetrating the first zone containing or reasonably expected to contain H2S.

a. Well Control Equipment:

1. Choke manifold with a minimum of one remote-controlled choke.
2. The Hydril BOP will accommodate all pipe sizes with a properly sized closing unit.

b. Protective equipment for essential personnel:

1. Mark II Surviveair (or equivalent) 30 minute units located in the dog house and at the primary briefing area (to be determined.)

c. H2S detection and monitoring equipment:

1. Three (3) portable H2S monitors positioned on location for best coverage and response. These units have warning lights and audible sirens when H2S levels of 20 PPM are reached.

d. Visual warning systems:

1. Wind direction indicators will be positioned for maximum visibility.
2. Caution/Danger signs shall be posted on roads providing direct access to location. Signs will be painted a high visibility yellow with black lettering of sufficient size to be readable at reasonable distance from the immediate location. Bilingual signs will be used when appropriate.

e. Mud program:

1. The mud program has been designed to minimize the volume of H2S circulated to the surface. Proper mud weight, safe drilling practices and the use of H2S scavengers will minimize hazards when penetrating H2S bearing zones.

f. Metallurgy:

1. All drill strings, casings, tubing, wellheads, Hydril BOPS, drilling spools, kill lines, choke manifold, valves and lines will be suitable for H2S service.
2. All elastomers used for packing and seals shall be H2S trim.

g. Communication:

1. Cellular Telephone and/or 2-way radio will be provided at wellsite.
2. Landline telephone is located in field office.

h. Well testing:

1. No Drill stem testing or coring may be done in this well bore. Completion testing, if required, will be conducted under the same Applicable H2S guidelines that were used in drilling.

(C) SURFACE USE PROGRAM

- (1) Existing roads: Exhibits A, B and C show maps of the general area. From Loco Hills, New Mexico, from the intersection of U.S. Hwy. #82 and Co. Rd. #221 (Skelly Rd.) go north on co. rd. #221 approx. .3 miles. Turne left and go West approx. .4 miles, bend right and go north approx. .4 miles, approx. 205 feet east to Jackson A #36 location.
- (2) Access roads to be constructed: This location will not require any additional lease road from the well pad to an existing lease road. See Exhibit A.
- (3) Location of existing wells: See Exhibit A.
- (4) Location of existing or proposed production facilities: See Exhibit A for location of existing Jackson A production facility on the lease. We propose to above ground commingle this Cedar Lake, Yeso production with the approved existing Yeso & Grayburg production by laying approximately 2000' of new flowline from this well pad to the existing flowline ROW to the Jackson A Tank Battery.
- (5) Location and type of water supply: All water to be used in drilling the well will be brine or fresh water trucked from Loco Hills, New Mexico or fresh or produced water furnished by our waterflood facilities.

- (6) Construction materials: Construction material will be caliche which may be available at the proposed location. If not available on location or road, caliche will be hauled from nearest approved caliche pit.
- (7) Methods of handling waste disposal: Drill cuttings will be disposed of in the lined reserve drilling pit. Auxiliary emergency water containment pits may be necessitated by large volume water flows and these pits, which will hold only water, will not be lined. All drilling fluids will be allowed to evaporate after drilling is completed, at which time pits will be back filled, leveled and reseeded. Trash, waste paper, garbage and junk will be placed in a portable screened trash container on location. All trash and debris will be transported to an authorized disposal station within 30 days following completion activities. Oil and/or water produced during testing operations will be stored in steel tanks until either sold or disposed of through one of our approved disposal methods.
- (8) Ancillary Facilities: There are no planned ancillary facilities.
- (9) Well site layout: Exhibit D shows the relative location and dimensions of the drilling pad and related components. Only minor differences, if any, in length and/or width of the drilling pad are anticipated, depending on which drilling contractor is selected to drill the well. Only minor leveling of the drilling site is anticipated.
- (10) Plans for restoration of the surface:
 - (a) After drilling and successful completion operations are finished, all equipment and other materials not required for normal production operations will be removed. Pits will be backfilled, leveled and re-seeded. Well site will be left in a neat condition.
 - (b) Any unguarded pits containing fluid will be fence until backfilled.
 - (c) After abandonment of the well, surface restoration will be in accordance with regulations of the SMA. Pits will be backfilled and location will be cleaned. The pit area, well pad and all unneeded access roads will be ripped to promote revegetation. Rehabilitation should be accomplished within 90 days after abandonment.
- (11) Surface ownership: All lands are Federal.

- (12) Other information: The topography of the area is relatively flat, with small hills and sand dunes. The soil is fine, deep sand underlain by caliche. Vegetation cover is generally sparse and consists of mesquite, yucca, oak shinnery and sparse native grasses. Wildlife in the area is typical of that of semi-arid lands and includes coyotes, rabbits, rodents, reptiles, dove and quail. There are no ponds, streams or residences in the area. There is intermittent cattle grazing and hunting in the area; however, the principal land use is for oil and gas production. An archaeological clearance report will be sent to you by a BLM approved archaeological service.
- (13) Operator's representative: Our field representative responsible for compliance with the approved surface use and operations plan is:

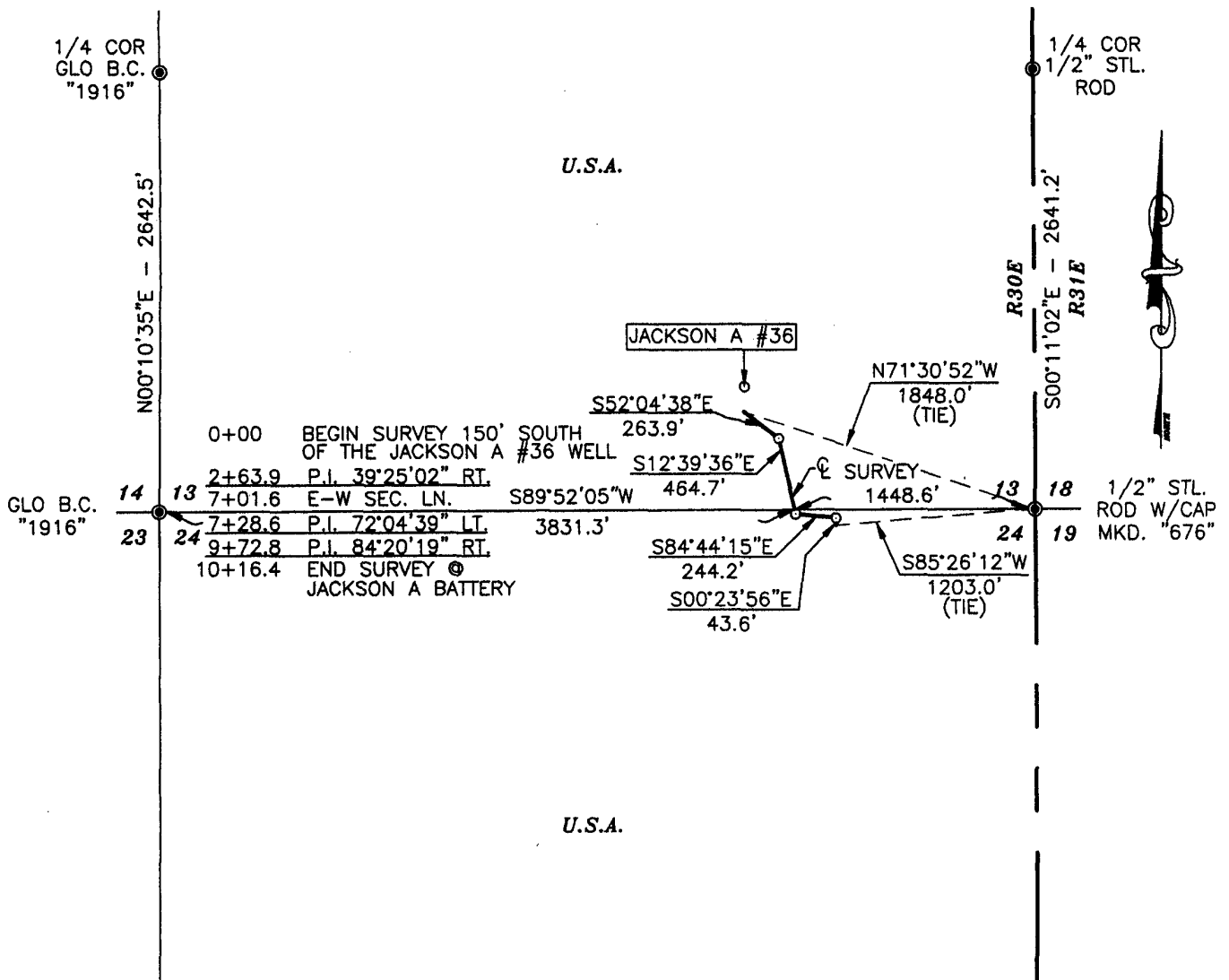
Mr. Belton Mathews, District Supt.
P.O. Box 188
Loco Hills, New Mexico 88255
Office phone: 505-677-2313
Home phone: 505-748-5302
Cellular phone: 505-746-7979

I hereby certify that I, or persons under my direct supervision have inspected the drill site and access route; that I am familiar with the conditions that currently exist; that the statements made in this plan are to the best of my knowledge, true and correct; and that the work associated with operations proposed herein will be performed by Burnett Oil Co., Inc. and its contractors and subcontractors in conformity with this plan and the terms and conditions under which it is approved. This statement is subject to the provisions of 18 U.S.C. 1001 for the filing of a false statement.

Date: 11/9/06

By: Mark Jacoby
Mark Jacoby
Engineering Manager

SECTIONS 13 & 24, TOWNSHIP 17 SOUTH, RANGE 30 EAST, N.M.P.M.,
 EDDY COUNTY, NEW MEXICO.



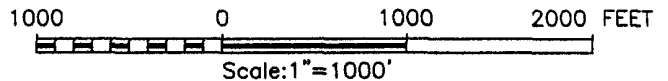
DESCRIPTION

A STRIP OF LAND 50.0 FEET WIDE AND 1016.4 FEET OR 0.193 MILES IN LENGTH CROSSING USA LAND IN SECTIONS 13 & 24, TOWNSHIP 17 SOUTH, RANGE 30 EAST, NMPM, EDDY COUNTY, NEW MEXICO AND BEING 25.0 FEET LEFT AND 25.0 FEET RIGHT OF THE ABOVE PLATTED CENTERLINE SURVEY.

NOTE: BEARINGS SHOWN HEREON ARE MERCATOR GRID AND CONFORM TO THE NEW MEXICO COORDINATE SYSTEM "NEW MEXICO EAST ZONE" NORTH AMERICAN DATUM 1983. DISTANCES ARE SURFACE VALUES.



I HEREBY CERTIFY THAT I DIRECTED AND AM RESPONSIBLE FOR THIS SURVEY, THAT THIS SURVEY IS TRUE AND CORRECT TO THE BEST OF MY KNOWLEDGE AND BELIEF, AND THAT THIS SURVEY AND PLAT MEET THE MINIMUM STANDARDS FOR SURVEYING IN NEW MEXICO.

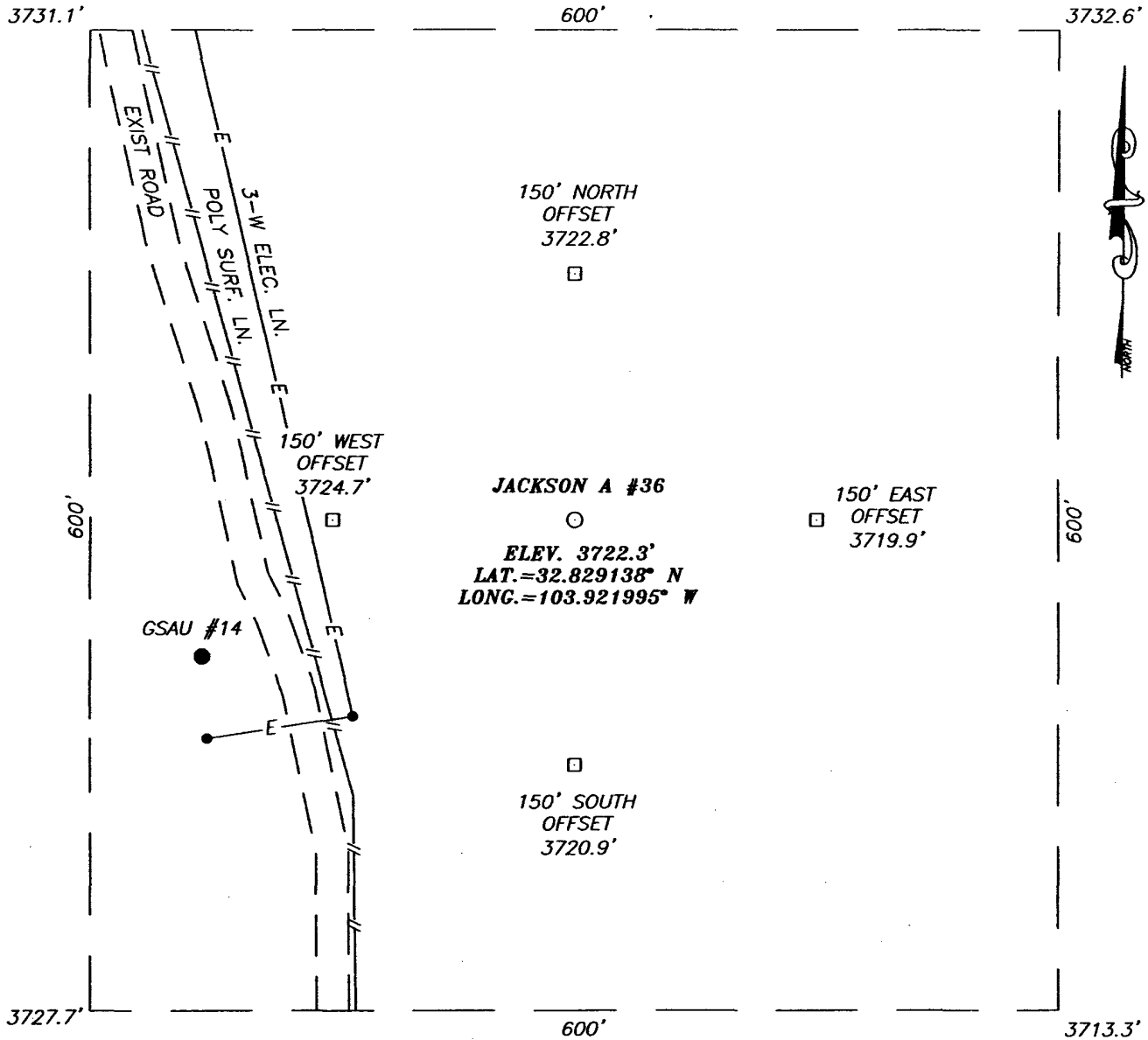


Gary G. Eidson 11/8/06
 GARY G. EIDSON N.M. P.S. No. 12641
 RONALD J. EIDSON N.M. P.S. No. 3239

PROVIDING SURVEYING SERVICES
 SINCE 1946
JOHN WEST SURVEYING COMPANY
 412 N. DAL PASO
 HOBBS, N.M. 88240
 (505) 393-3117

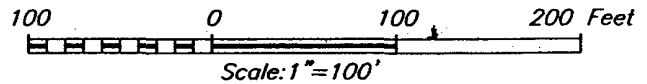
BURNETT OIL COMPANY			
SURVEY OF A PIPELINE IN SECTION 13, TOWNSHIP 17 SOUTH, RANGE 30 EAST, N.M.P.M., EDDY COUNTY, NEW MEXICO			
Survey Date: 10/25/06	Sheet 1 of 1 Sheets		
W.O. Number: 06.11.1660	Drawn By: J.R.		
Date: 11/03/06	DISK:CD#6	06111660_FL	

SECTION 13, TOWNSHIP 17 SOUTH, RANGE 30 EAST, N.M.P.M.,
 EDDY COUNTY, NEW MEXICO



DIRECTIONS TO LOCATION

FROM THE INTERSECTION OF U.S. HWY. #82 AND CO. RD. #221 (SKELLY RD.), GO NORTH ON CO. RD. #221 APPROX. 0.3 MILES. TURN LEFT AND GO WEST APPROX. 0.4 MILES, BEND RIGHT AND GO NORTH APPROX. 0.4 MILES. THIS LOCATION IS APPROX. 205 FEET EAST.

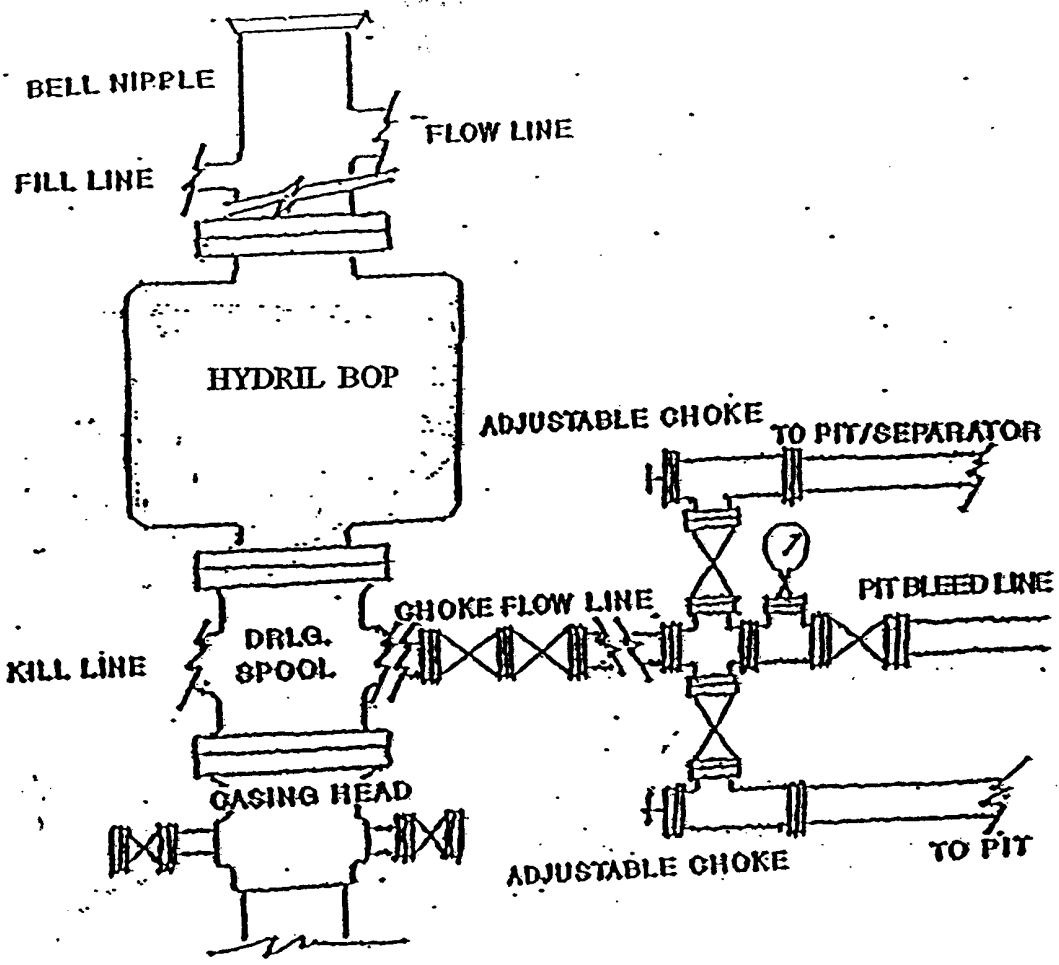


BURNETT OIL COMPANY

JACKSON A #36 WELL
 LOCATED 740 FEET FROM THE SOUTH LINE
 AND 1750 FEET FROM THE EAST LINE OF SECTION 13,
 TOWNSHIP 17 SOUTH, RANGE 30 EAST, N.M.P.M.,
 EDDY COUNTY, NEW MEXICO.

Survey Date: 10/25/06	Sheet 1 of 1 Sheets
W.O. Number: 06.11.1660	Dr By: J.R.
Date: 11/02/06	Disk: CD#6
06111660	Scale: 1"=100'

PROVIDING SURVEYING SERVICES
 SINCE 1946
JOHN WEST SURVEYING COMPANY
 412 N. DAL PASO
 HOBBS, N.M. 88240
 (505) 393-3117



BURNETT OIL CO., INC.

**BLOWOUT PREVENTER &
 CHOKES MANIFOLD DIAGRAM
 2000 PSI WORKING PRESSURE
 SERIES 600 FLANGES**

JACKSON A #36
 EXHIBIT "E"

RESERVE PIT CONSTRUCTION STANDARDS

The reserve pit shall be constructed entirely in cut material and lined with 6-mil plastic.

Mineral material extracted from within the boundary of the APD during construction of the well pad and reserve pits and be used for the construction of this well pad and its immediate access road only, as long as that portion of the access road it is use on remains on-lease. Removal of any additional material from this location for construction or improvement of other well pads and other access or lease roads must first be purchased from BLM.

Reclamation: Reclamation of this type of deep pit will consist of pushing the pit walls into the pit when sufficiently dry to support track equipment. The pit liner is NOT TO BE RUPTURED to facilitate drying; a ten month period after completion of the well is allowed for drying of the pit contents.

The pit area must be contoured to the natural terrain with all contaminated drilling mud buried with at least 3 feet of clean soil. The reclaimed area will then be seeded as specified in this permit.

OPTIONAL PIT CONSTRUCTION STANDARDS

The reserve pit may be constructed in predominantly fill material if:

(1) Lined as specified above and

(2) A temporary or emergency pit may be constructed immediately adjacent to the reserve pit as long as the pit remains within the APD boundary. Mineral material removed from this pit may be used for the construction of this well pad only and its immediate access road, as long as that portion of the access road the material is used on remains on-lease. Removal of any material from the APD boundary for use on other well locations or roads must first be purchased from BLM.

Reclamation of the reserve pit consists of bulldozing all reserve pit contents and contaminants into the borrow pit and covering with a minimum of 3 feet of clean soil material. The entire area must be re-contoured, all trash removed, and reseeded as specified in this permit.

CULTURAL

Whether or not an archaeological survey has been completed and notwithstanding that operations are being conducted as approved, the lessee/operator/grantee shall notify the BLM immediately if previously unidentified cultural resources are observed during surface disturbing operations. From the time of the observation, the lessee/operator/grantee shall avoid operations that will result in disturbance to these cultural resources until directed to process by BLM.

TRASH PIT STIPS

All trash, junk, and other waste material shall be contained in trash cages or bins to prevent scattering and will be removed and deposited in an approved sanitary landfill. Burial on site is not permitted.

CONDITIONS OF APPROVAL - DRILLING

Well Name & No. Jackson A # 36
Operator's Name: Burnett Oil Co Inc.
Location: 740' FSL, 1750' FEL, SEC 13, T17S, R30E, Eddy County, NM
Lease: LC-029339A

I. DRILLING OPERATIONS REQUIREMENTS:

1. The Bureau of Land Management (BLM) is to be notified at the Carlsbad Field Office, 620 East Greene St., Carlsbad, NM 88220, (505) 361-2822 for wells in Eddy County; and the Hobbs Field Station, 414 West Taylor, Hobbs NM 88240, (505) 393-3612 for wells in Lea County, in sufficient time for a representative to witness:
 - A. Spudding
 - B. Cementing casing: 9 5/8 inch 7 inch
 - C. BOP tests
2. A Hydrogen Sulfide (H₂S) Drilling Plan should be activated prior to drilling **OUT OF THE SURFACE CASING**. A copy of the plan shall be posted at the drilling site.
3. Unless the production casing has been run and cemented or the well has been properly plugged, the drilling rig shall not be removed from over the hole without prior approval.
4. Submit a Sundry Notice (Form 3160-5, one original and five copies) for each casing string, describing the casing and cementing operations. Include pertinent information such as; spud date, hole size, casing (size, weight, grade and thread type), cement (type, quantity and top), water zones and problems or hazards encountered. The Sundry shall be submitted within 15 days of completion of each casing string. The reports may be combined into the same Sundry if they fall within the same 15 day time frame.
5. The API No. assigned to the well by NMOCD shall be included on the subsequent report of setting the first casing string.
6. A Communitization Agreement covering the acreage dedicated to this well must be filed for approval with the BLM. The effective date of the agreement shall be prior to any sales.
7. Gamma-Ray/Neutron logs shall be run from the base of the Salado Formation to the surface; cable speed not to exceed 30 feet per minute.

II. CASING:

1. The 9 5/8 inch surface casing shall be set **ABOVE THE SALT, AT LEAST 25 feet INTO THE RUSTLER ANHYDRITE @ APPROXIMATELY 400 FEET**, below usable water and cement circulated to the surface. If cement does not circulate to the surface the appropriate BLM office shall be notified and a temperature survey or cement bond log shall be run to verify the top of the cement. Remedial cementing shall be completed prior to drilling out that string.
2. The minimum required fill of cement behind the 5-1/2 inch production casing is **cement shall CIRCULATE TO THE SURFACE.**
5. Whenever a casing string is cemented in the R-111-P Potash Area, cement shall be allowed to stand a minimum of twelve (12) hours under pressure and a total of twenty-four (24) hours before drilling the plug or initiating tests.

III. PRESSURE CONTROL:

1. All BOP systems and related equipment shall comply with well control requirements as described in Onshore Oil and Gas Order No. 2. The BOP and related equipment shall be installed and operational before drilling below the 9 5/8 inch casing shoe and shall be tested as described in Onshore Order No. 2. Any equipment failing to test satisfactorily shall be repaired or replaced.
2. Minimum working pressure of the blowout preventer and related equipment (BOPE) is 2000 psi.
3. The appropriate BLM office shall be notified in sufficient time for a representative to witness the tests.
 - A variance to test the _____ to the reduced pressure of ____psi with the rig pumps is approved.
 - The tests shall be done by an independent service company.
 - The results of the test shall be reported to the appropriate BLM office.
 - Testing fluid must be water or an appropriate clear liquid suitable for sub-freezing temperatures. Use of drilling mud for testing is not permitted since it can mask small leaks.
 - Testing must be done in a safe workman-like manner. Hard line connections shall be required.

IV. MUD

1. **Mark Jacoby has advised that the surface mud weight will be 8.6-9.5 ppg and production casing will be drilled with a 10.0 ppg maximum mud weight.**
2. **Operator is advised that artesian flows in the range of surface casing setting depths have caused sever problems in nearby wells.**

Engineers can be reached at 505-706-2779 for any variances that might be necessary.

F Wright 11/21/06