

UNITED STATES  
DEPARTMENT OF THE INTERIOR  
BUREAU OF LAND MANAGEMENTN.M. Oil Cons. DIV-Dist. 2  
1301 W. Grand Avenue  
Albuquerque, NM 88210FORM APPROVED  
OMB NO. 1004-0137  
Expires: November 30, 2000

## WELL COMPLETION OR RECOMPLETION REPORT

- 1a. Type of Well ☒ Oil Well ☐ Gas Well ☐ Dry Other  
b. Type of Completion ☒ New Well ☐ Work Over ☐ Deepen ☐ Plug Back ☐ Diff. Resrv.  
Other \_\_\_\_\_

2. Name of Operator  
Bass Enterprises Production Co.

3. Address  
P. O. Box 2760 Midland TX 79702

3.a Phone No. (include area code)  
(432)683-2277

4. Location of Well (Report location clearly and in accordance with Federal requirements)\*

At Surface NWNW, 990 FNL, 990 FWL

At top prod. interval reported below SAME

At total depth SAME

CONFIDENTIAL

5. Lease Serial No.  
NMLC069627 A

6. If Indian, Allottee or Tribe Name

7. Unit or CA Agreement Name and no.  
NMNM71016 X

8. Lease Name and Well No.

POKER LAKE UNIT 232

9. API Well No.

30-015-34009 SI

10. Field and Pool, or Exploratory

NASH DRAW - DELAWARE

11. Sec., T., R., M., on Block and

Survey or Area SEC 31, T24S, R30E

12. County or Parish

EDDY

13. State

NM

17. Elevations (DF, RKB, RT, GL)\*

3160' GL

14. Date Spudded

07/28/2005

15. Date T.D. Reached

08/08/2005

16. Date Completed

☐ D & A ☒ Ready to Prod.

08/25/2005

18. Total Depth: MD 7490'  
TVD

19. Plug Back T.D.: MD 7399'  
TVD

20. Depth Bridge Plug Set: MD 7260'  
TVD

21. Type of Electric & Other Mechanical Logs Run (Submit copy of each)  
GR-CNL-LDT; GR-AIT

22. Was well cored? ☒ No ☐ Yes (Submit analysis)  
Was DST run? ☒ No ☐ Yes (Submit analysis)  
Directional Survey? ☐ No ☒ Yes (Submit copy)

## 23. Casing and Liner Record (Report all strings set in well)

Hole Size	Size/Grade	Wt. (#/ft.)	Top (MD)	Bottom (MD)	Stage Cement Depth	No. of Sk. & Type of Cement	Slurry Vol. (BBL)	Cement Top*	Amount Pulled
14-3/4"	11-3/4	H40/42#	0'	719'		1250		0'	0
7-7/8"	5-1/2"	J55/15.5#	0'	6154'					0
7-7/8"	5-1/2"	J55/17#	6154'	7488'		720		3475'	0

## 24. Tubing Record

Size	Depth Set (MD)	Packer Depth (MD)	Size	Depth Set (MD)	Packer Depth (MD)	Size	Depth Set (MD)	Packer Depth (MD)
2-7/8"	7213'							

## 25. Producing Intervals

Formation	Top	Bottom	Perforated Interval	Size	No. Holes	Perf. Status
A) DELAWARE	7180'	7350'	7180'-7194'	0.470	28	PRODUCING
B)			7336'-7350'	0.470	28	BELOW CBP
C)						
D)						

## 27. Acid, Fracture, Treatment, Cement Squeeze, Etc.

Depth Interval	Amount and Type of Material
7180'-7194'	88,028 GALS PW + 7,677# 14/30 LITE PROP
7336'-7350'	173,998 GALS PW + 14,067# 14/30 LITE PROP

ACCEPTED FOR RECORD

OCT 11 2005

ALEXIS C. SWOBODA  
PETROLEUM ENGINEER

## 28. Production - Interval A

Date First Produced	Test Date	Hours Tested	Test Production	Oil BBL	Gas MCF	Water BBL	Oil Gravity Corr. API	Gas Gravity	Production Method
8/25/05	08/30/05	24	→	52	101	222			PUMPING
Choke Size	Tbg. Press. Flwg. SI	Csg. Press. SI	24 Hr. Rate	Oil BBL	Gas MCF	Water BBL	Gas : Oil Ratio	Well Status	
13/64"	SI 350	520	→	52	101	222		SI WAITING ON BATTERY	

## Production - Interval B

Date First Produced	Test Date	Hours Tested	Test Production	Oil BBL	Gas MCF	Water BBL	Oil Gravity Corr. API	Gas Gravity	Production Method
			→						
Choke Size	Tbg. Press. Flwg. SI	Csg. Press. SI	24 Hr. Rate	Oil BBL	Gas MCF	Water BBL	Gas : Oil Ratio	Well Status	
	SI		→						

(See Instructions and spaces for additional data on reverse side)

## 28b. Production - Interval C

Date First Produced	Test Date	Hours Tested	Test Production →	Oil BBL	Gas MCF	Water BBL	Oil Gravity Corr. API	Gas Gravity	Production Method
Choke Size	Tbg. Press. Flwg. SI	Csg. Press.	24 Hr. Rate →	Oil BBL	Gas MCF	Water BBL	Gas : Oil Ratio	Well Status	

## 28c. Production - Interval D

Date First Produced	Test Date	Hours Tested	Test Production →	Oil BBL	Gas MCF	Water BBL	Oil Gravity Corr. API	Gas Gravity	Production Method
Choke Size	Tbg. Press. Flwg. SI	Csg. Press.	24 Hr. Rate →	Oil BBL	Gas MCF	Water BBL	Gas : Oil Ratio	Well Status	

## 29. Disposition of Gas (Sold, used for fuel, vented, etc.)

SOLD

## 30. Summary of Porous Zones (Include Aquifers):

Show all important zones or porosity and contents thereof: Cored intervals and all drill-stem tests, including depth interval tested, cushion used, time tool open, flowing and shut-in pressures and recoveries.

## 31. Formation (Log) Markers

Formation	Top	Bottom	Descriptions, Contents, etc.	Name	Top Meas. Depth
				T/RUSTLER	100'
				T/SALT	720'
				B/SALT	3209'
				T/DELAWARE MTN GROUP	3419'

## 32. Additional remarks (include plugging procedure):

## 33. Circle enclosed attachments:

1. Electrical/Mechanical Logs (1 full set req'd.)    2. Geological Report    3. DST Report    4. Directional Survey  
5. Sundry Notice for plugging and cement verification    6. Core Analysis    7. Other

## 34. I hereby certify that the foregoing and attached information is complete and correct as determined from all available records (see attached instructions)\*

Name (please print) Cindi Goodman Title Production ClerkSignature  Date 09/15/2005

Title 18 U.S.C. Section 101 and Title 43 U.S.C. Section 1212, make it a crime for any person knowingly and willfully to make to any department or agency of the United States and false, fictitious or fraudulent statements or representations as to any matter within its jurisdiction.

# INCLINATION REPORT

DATE: 9/14/05

WELL NAME : POKER LAKE UNIT 232  
LOCATION: Eddy County, New Mexico  
OPERATOR: BASS ENTERPRISES  
DRILLING CONTRACTOR: GREY WOLF DRILLING COMPANY, LP  
RIG 15

I, Freddie Rios, do hereby certify, that the following inclination report was prepared in the office of GREY WOLF DRILLING COMPANY, LP in Midland, Texas, under my supervision, from records of said well, and is true and correct to the best of my knowledge:

DEGREE	DEPTH	DEGREE	DEPTH	DEGREE	DEPTH	DEGREE	DEPTH
.75	@ 155	.5	@ 2344	.5	@ 4951		
.5	@ 395	.5	@ 2647	.5	@ 5441		
1.25	@ 700	.5	@ 2741	.5	@ 5931		
.5	@ 813	1.5	@ 3028	.5	@ 6279		
1	@ 910	1	@ 3123	1	@ 6740		
1	@ 1005	1.5	@ 3219	1	@ 7203		
1	@ 1101	.5	@ 3346	1	@ 7440		
1	@ 1533	.5	@ 3406		@		
1	@ 1707	.5	@ 3570		@		
1	@ 1867	.5	@ 3760		@		
1	@ 2026	.5	@ 4250		@		
.5	@ 2144	.5	@ 4468		@		

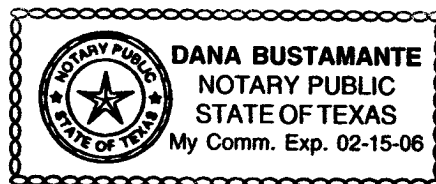
Drilling Contractor:  
Grey Wolf Drilling Company, LP

By: Freddie A. Rios  
Freddie Rios

Subscribed and sworn to before me on this 15th day of Sept, 2005.

My Commission Expires: 2/15/06

By: Dana Bustamante  
Notary Public



THS  
9/15/05

DISTRICT I  
1625 N. French Dr., Hobbs, NM 88240  
DISTRICT II  
811 South First, Artesia, NM 88210

DISTRICT III  
1000 Rio Brazos Rd., Aztec, NM 87410

DISTRICT IV  
2040 South Pacheco, Santa Fe, NM 87505

State of New Mexico  
Energy, Minerals and Natural Resources Department

Form C-102  
Revised March 17, 1999

Submit to Appropriate District Office  
State Lease - 4 Copies  
Fee Lease - 3 Copies

OIL CONSERVATION DIVISION

2040 South Pacheco  
Santa Fe, New Mexico 87504-2088

☐ AMENDED REPORT

WELL LOCATION AND ACREAGE DEDICATION PLAT

API Number	Pool Code	Pool Name
	47545	NASH DRAW-DELAWARE
Property Code	Property Name	Well Number
001796	POKER LAKE UNIT	232
OGRID No.	Operator Name	Elevation
001301	BASS ENTERPRISES PRODUCTION COMPANY	3162'

Surface Location

UL or lot No.	Section	Township	Range	Lot Idn	Feet from the	North/South line	Feet from the	East/West line	County
D	31	24 S	30 E		990	NORTH	990	WEST	EDDY

Bottom Hole Location If Different From Surface

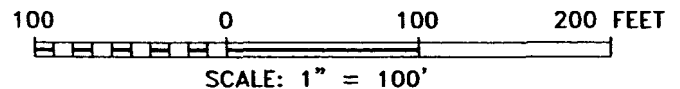
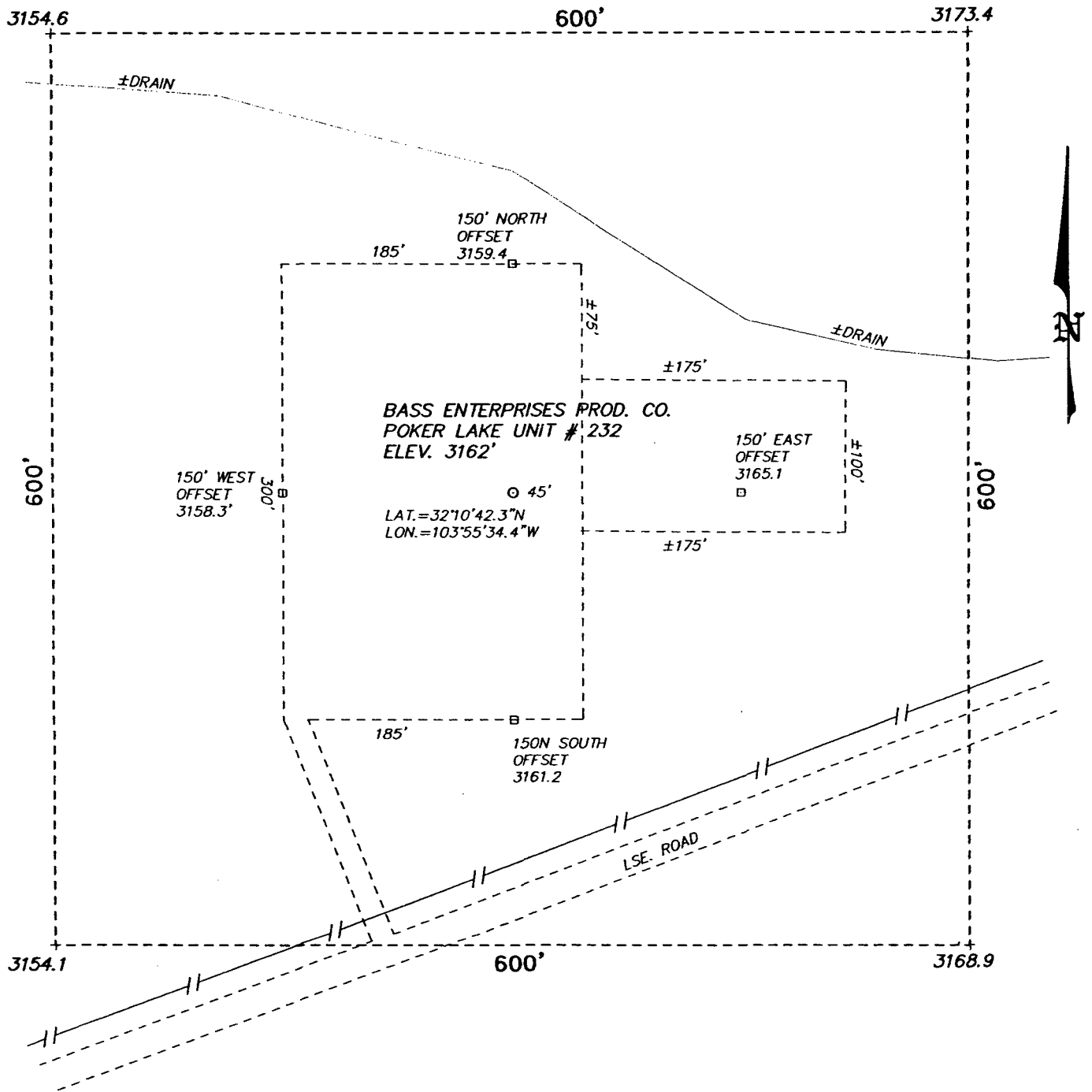
UL or lot No.	Section	Township	Range	Lot Idn	Feet from the	North/South line	Feet from the	East/West line	County
Dedicated Acres	Joint or Infill	Consolidation Code	Order No.						
40	I								

NO ALLOWABLE WILL BE ASSIGNED TO THIS COMPLETION UNTIL ALL INTERESTS HAVE BEEN CONSOLIDATED  
OR A NON-STANDARD UNIT HAS BEEN APPROVED BY THE DIVISION

				<b>OPERATOR CERTIFICATION</b>  I hereby certify the the information contained herein is true and complete to the best of my knowledge and belief.   Signature W.R. DANNELS Printed Name DIVISION DRILLING SUPT. Title 1-20-05 Date					
<b>LOT 1</b> 40.55 acres				<b>LOT 2</b> 40.61 acres		<b>LOT 3</b> 40.57 acres		<b>LOT 4</b> 40.53 acres	
40.68 acres				40.55 acres		40.58 acres			
40.64 acres				40.59 acres		40.62 acres			
40.60 acres				40.63 acres		40.66 acres			
40.56 acres				40.67 acres		40.70 acres			

<b>SURVEYOR CERTIFICATION</b>  I hereby certify that the well location shown on this plat was plotted from field notes of actual surveys made by me or under my supervision, and that the same is true and correct to the best of my belief.  JANUARY 13, 2005 Date Surveyed  Signature & Seal of Professional Surveyor W.C. No. 4940 Certified No. Gary L. Jones 7977 BASIN SURVEYS	
-----------------------------------------------------------------------------------------------------------------------------------------------------------------------------------------------------------------------------------------------------------------------------------------------------------------------------------------------------------------------------------------------------------------------	--

SECTION 31, TOWNSHIP 24 SOUTH, RANGE 30 EAST, N.M.P.M.,  
EDDY COUNTY, NEW MEXICO.



**BASS ENTERPRISES PRODUCTION CO.**

REF: POKER LAKE UNIT No. 232 / Well Pad Topo

THE POKER LAKE UNIT No. 232 LOCATED 990' FROM  
THE WEST LINE AND 990' FROM THE NORTH LINE OF  
SECTION 31, TOWNSHIP 24 SOUTH, RANGE 30 EAST,

N.M.P.M., EDDY COUNTY, NEW MEXICO.

**BASIN SURVEYS** P.O. BOX 1786-HOBBS, NEW MEXICO

W.O. Number: 4946

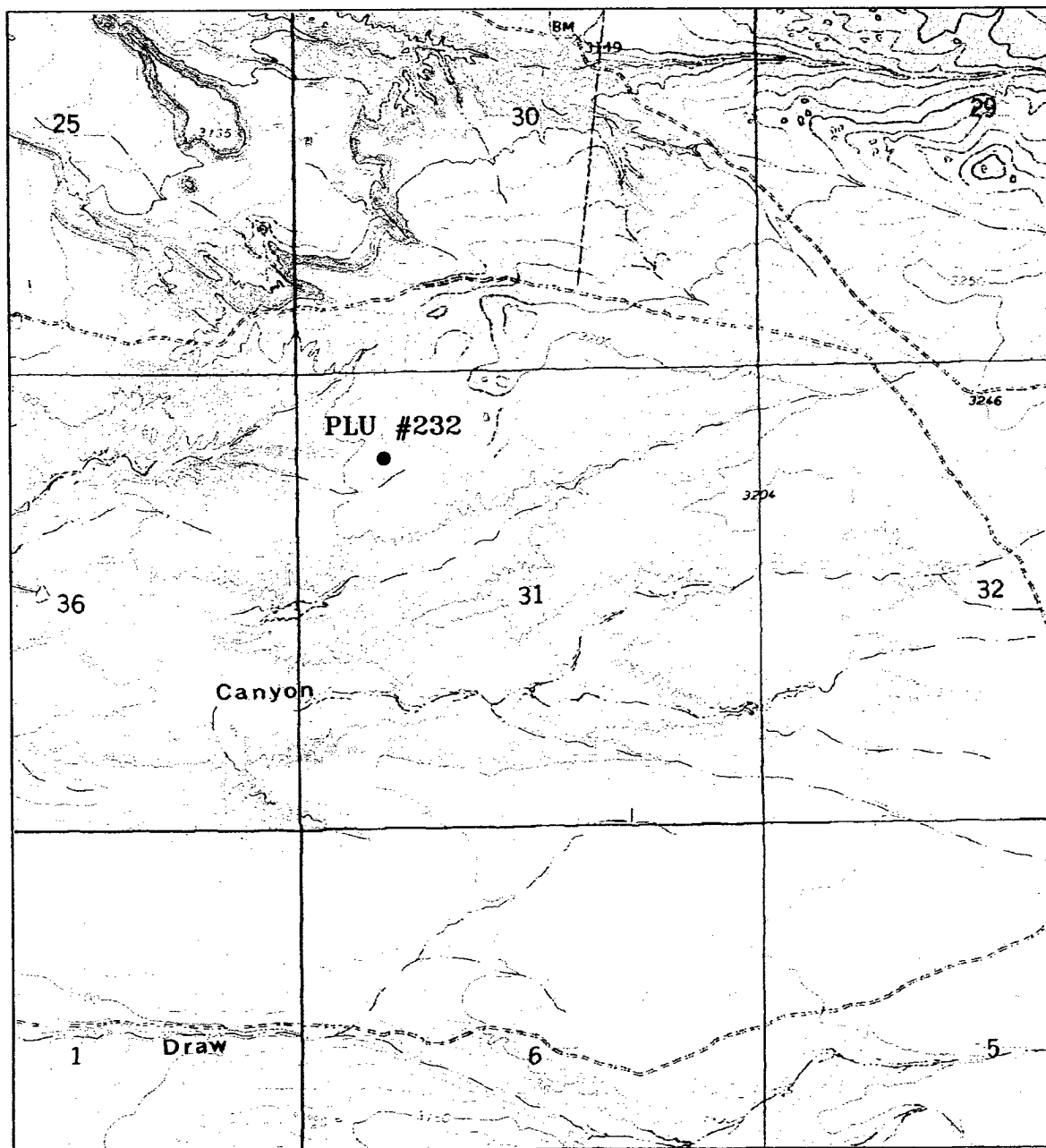
Drawn By: GWS

Date: 01-12-05

Disk: BASS4946

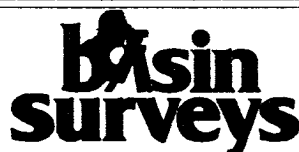
Survey Date: 01-12-05

Sheet 1 of 1 Sheets



# **POKER LAKE UNIT #232**

Located at 990' FNL and 990' FWL  
 Section 31, Township 24 South, Range 30 East,  
 N.M.P.M., Eddy County, New Mexico.



focused on excellence  
 in the oilfield

P.O. Box 1786  
 1120 N. West County Rd.  
 Hobbs, New Mexico 88241  
 (505) 393-7316 - Office  
 (505) 392-3074 - Fax  
 basinsurveys.com

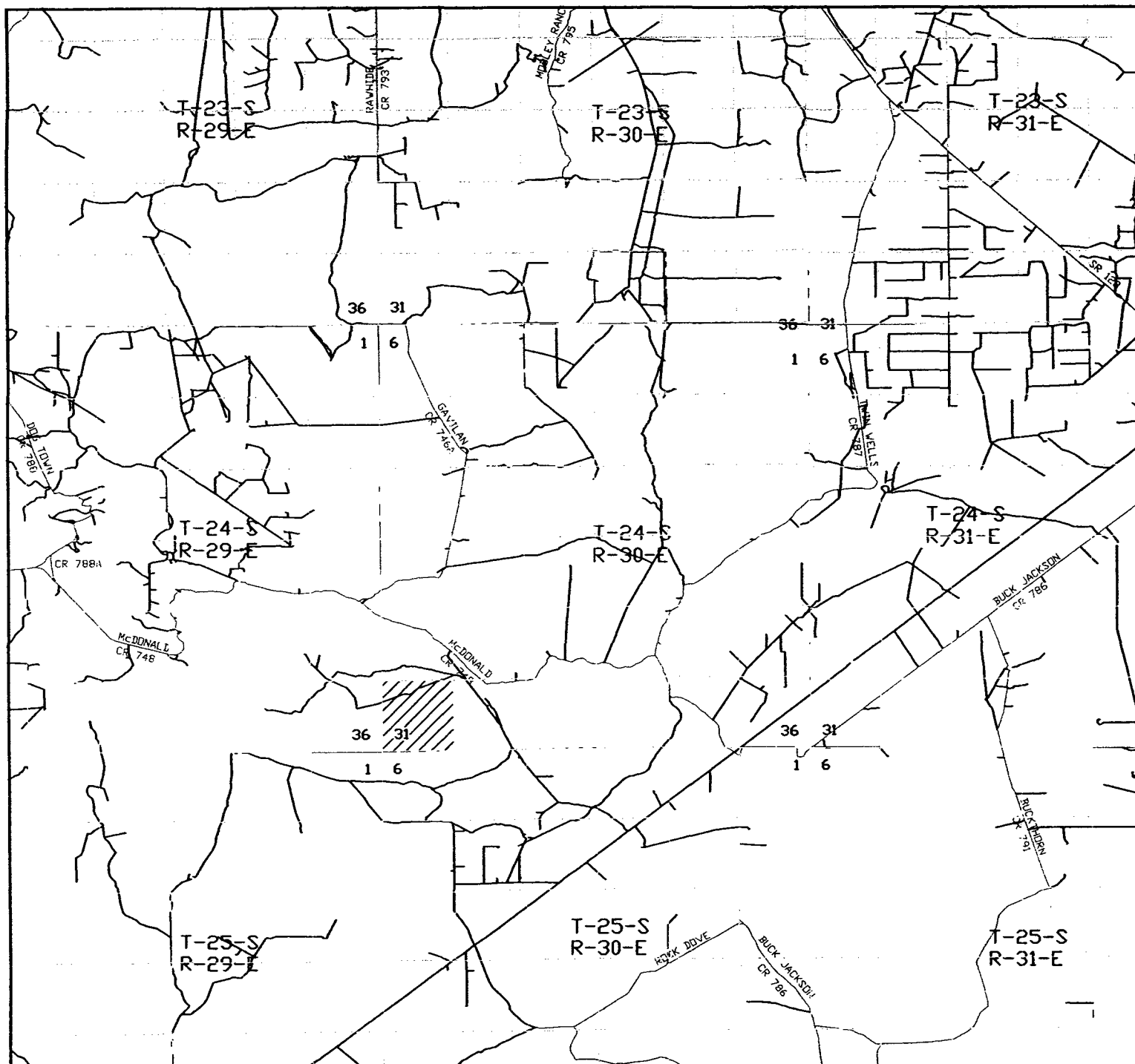
W.O. Number: 4946AA - KJG #7

Survey Date: 01-12-2005

Scale: 1" = 2000'

Date: 01-13-2005

**BASS ENTERPRISES  
 PRODUCTION CO.**



# **POKER LAKE UNIT #232**

Located at 990' FNL and 990' FWL  
 Section 31, Township 24 South, Range 30 East,  
 N.M.P.M., Eddy County, New Mexico.

**basin**  
**surveys**

focused on excellence  
 in the oilfield

P.O. Box 1786  
 1120 N. West County Rd.  
 Hobbs, New Mexico 88241  
 (505) 393-7316 - Office  
 (505) 392-3074 - Fax  
 basinsurveys.com

W.O. Number: 4946AA - KJG #7

Survey Date: 01-12-2005

Scale: 1" = 2 MILES

Date: 01-13-2005

**BASS ENTERPRISES  
 PRODUCTION CO.**

**BASS ENTERPRISES PRODUCTION CO.**  
6 DESTA DRIVE, SUITE 3700 (79705)  
P. O. BOX 2760  
MIDLAND, TEXAS 79702

FAX (432) 687-0329

September 13, 2005

(432) 683-2277

Re: Poker Lake Unit #232  
Nash Draw - Delaware  
Eddy County, NM  
File: 100-WF: PLU232.CNF

Bureau of Land Management  
2909 West Second Street  
Roswell, NM 88201

Gentlemen:

Bass Enterprises Production Co. respectfully requests that the Logs and completion data on the above subject well, be held confidential for the maximum period of time.

If you should have any questions, please contact Cindi Goodman at the above letterhead address.

Sincerely,

A handwritten signature in black ink, appearing to read 'Cindi Goodman', followed by a long, horizontal, slightly wavy line.

Cindi Goodman  
Production Clerk

cdg