

DISTRICT I
1625 N. FRENCH DR., HOBBS, NM 58240

State of New Mexico
Energy, Minerals and Natural Resources Department

DISTRICT II
1301 W. GRAND AVENUE, ARTESIA, NM 58210

OIL CONSERVATION DIVISION
1220 SOUTH ST. FRANCIS DR.
Santa Fe, New Mexico 87505

Form C-102
Revised October 12, 2005
Submit to Appropriate District Office
State Lease - 4 Copies
Fee Lease - 3 Copies

DISTRICT III
1000 Rio Brazos Rd., Aztec, NM 87410

DISTRICT IV
1220 S. ST. FRANCIS DR., SANTA FE, NM 87505

WELL LOCATION AND ACREAGE DEDICATION PLAT

☐ AMENDED REPORT

API Number 38-011-35324	Pool Code	Pool Name WILDCAT Wolfcamp
Property Code 36221	Property Name QUAIL CREEK STATE	
OGRID No. 013837	Operator Name MACK ENERGY CORPORATION	
		Well Number 1
		Elevation 3990'

Surface Location

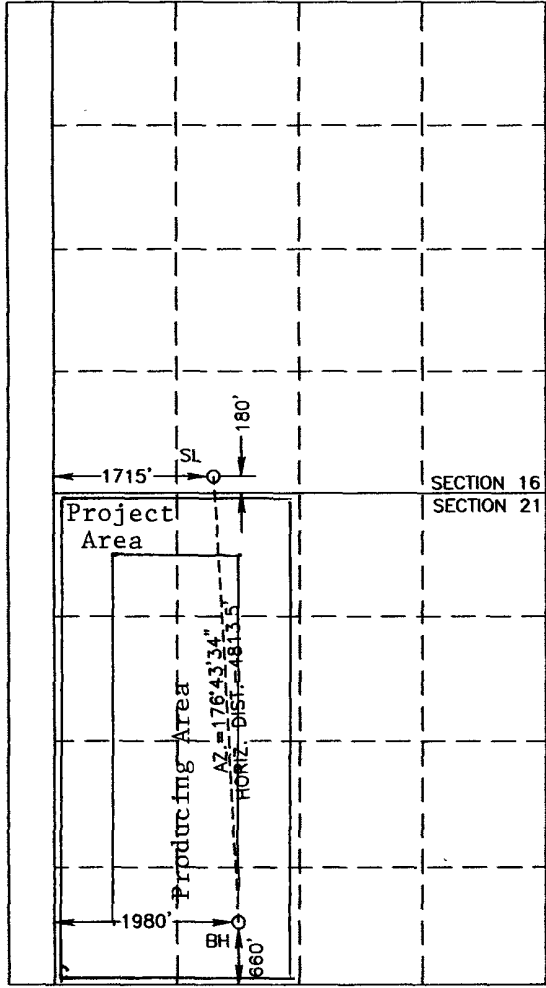
UL or lot No.	Section	Township	Range	Lot Idn	Feet from the	North/South line	Feet from the	East/West line	County
N	16	19-S	23-E		180	SOUTH	1715	WEST	EDDY

Bottom Hole Location If Different From Surface

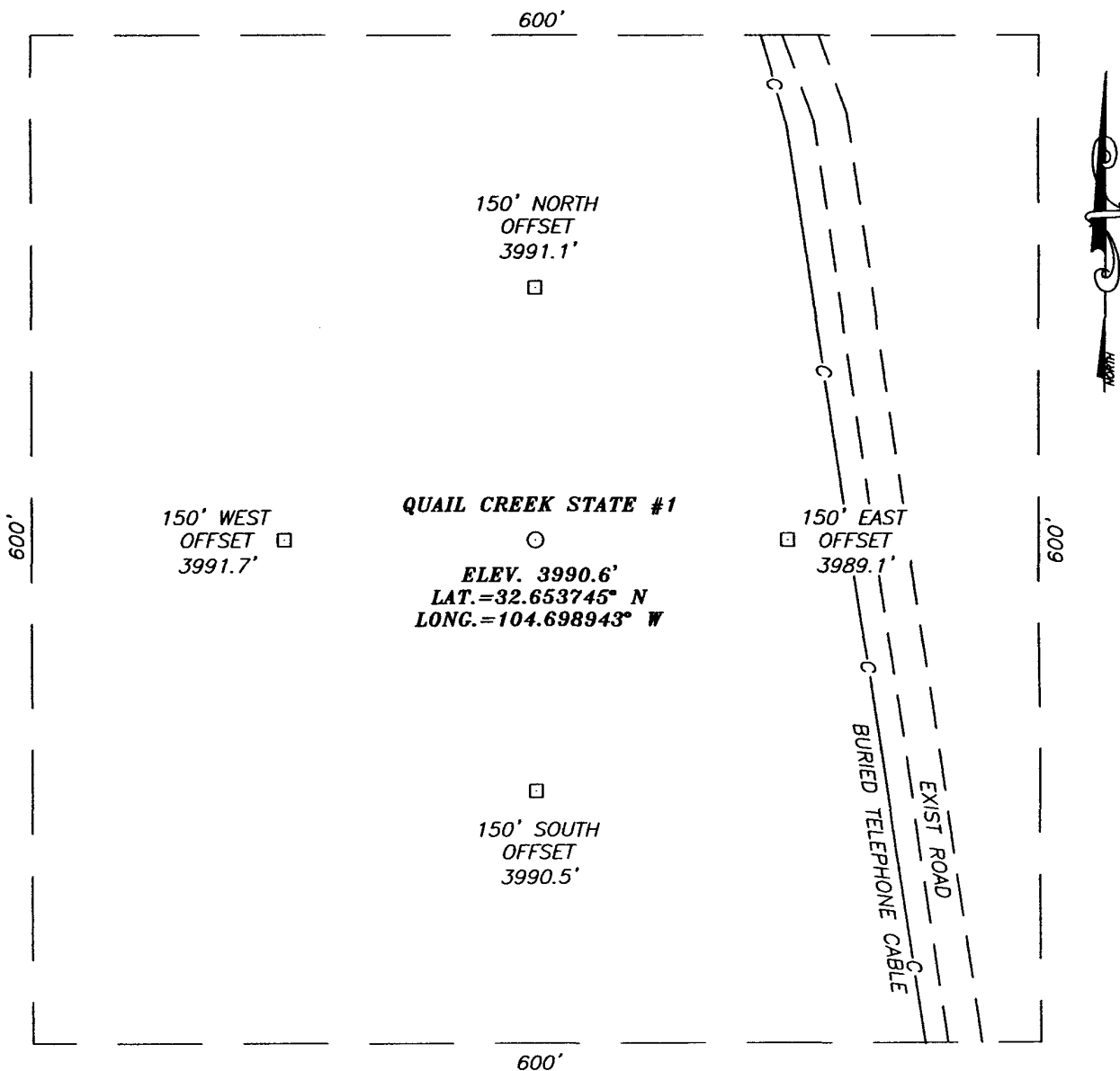
UL or lot No.	Section	Township	Range	Lot Idn	Feet from the	North/South line	Feet from the	East/West line	County
C	21	19-S	23-E		660	SOUTH	1980	WEST	EDDY

Dedicated Acres	Joint or Infill	Consolidation Code	Order No.
320			

NO ALLOWABLE WILL BE ASSIGNED TO THIS COMPLETION UNTIL ALL INTERESTS HAVE BEEN CONSOLIDATED
OR A NON-STANDARD UNIT HAS BEEN APPROVED BY THE DIVISION

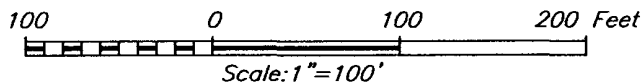
 <p>SECTION 16 SECTION 21</p> <p>Project Area</p> <p>Producing Area</p> <p>SL 180'</p> <p>1715'</p> <p>AZ = 176°43'34"</p> <p>HORIZ. DIST. = 4813.5'</p> <p>1980'</p> <p>BH 660'</p>	<p>GEODETIC COORDINATES NAD 27 NME SURFACE LOCATION Y=601737.5 N X=387474.3 E</p> <p>LAT.=32.653745° N LONG.=104.698943° W</p> <p>BOTTOM HOLE Y=596933.3 N X=387749.1 E</p> <p>SCALE: 1"=2000'</p>	<p>OPERATOR CERTIFICATION</p> <p>I hereby certify that the information herein is true and complete to the best of my knowledge and belief, and that this organization either owns a working interest or unleased mineral interest in the land including the proposed bottom hole location or has a right to drill this well at this location pursuant to a contract with an owner of such mineral or working interest, or to a voluntary pooling agreement or a compulsory pooling order heretofore entered by the division.</p> <p><i>Jerry W. Sherrell</i> 12/28/06 Signature Date</p> <p>Jerry W. Sherrell Printed Name</p> <p>SURVEYOR CERTIFICATION</p> <p>I hereby certify that the well location shown on this plat was plotted from field notes of actual surveys made by me or under my supervision, and that the same is true and correct to the best of my belief.</p> <p>DECEMBER 7, 2006</p> <p>Date Surveyed REV. 12/20/06 JR</p> <p>Signature & Seal of Professional Surveyor</p> <p><i>Gary A. Edson</i> 12/21/06 06.11.1960</p> <p>Certificate No. GARY EIDSON 12641 CHAD HARCROW 17777</p>
--	--	--

SECTION 16, TOWNSHIP 19 SOUTH, RANGE 23 EAST, N.M.P.M.,
 EDDY COUNTY, NEW MEXICO



DIRECTIONS TO LOCATION

FROM THE INTERSECTION OF CO. RD. #12
 (ARMSTRONG RD.) AND CO. RD. #21 (ROCKIN R
 RED RD.), GO SOUTH ON CO. RD. #12 APPROX.
 2.5 MILES. THIS LOCATION IS APPROX. 210 FEET
 WEST.



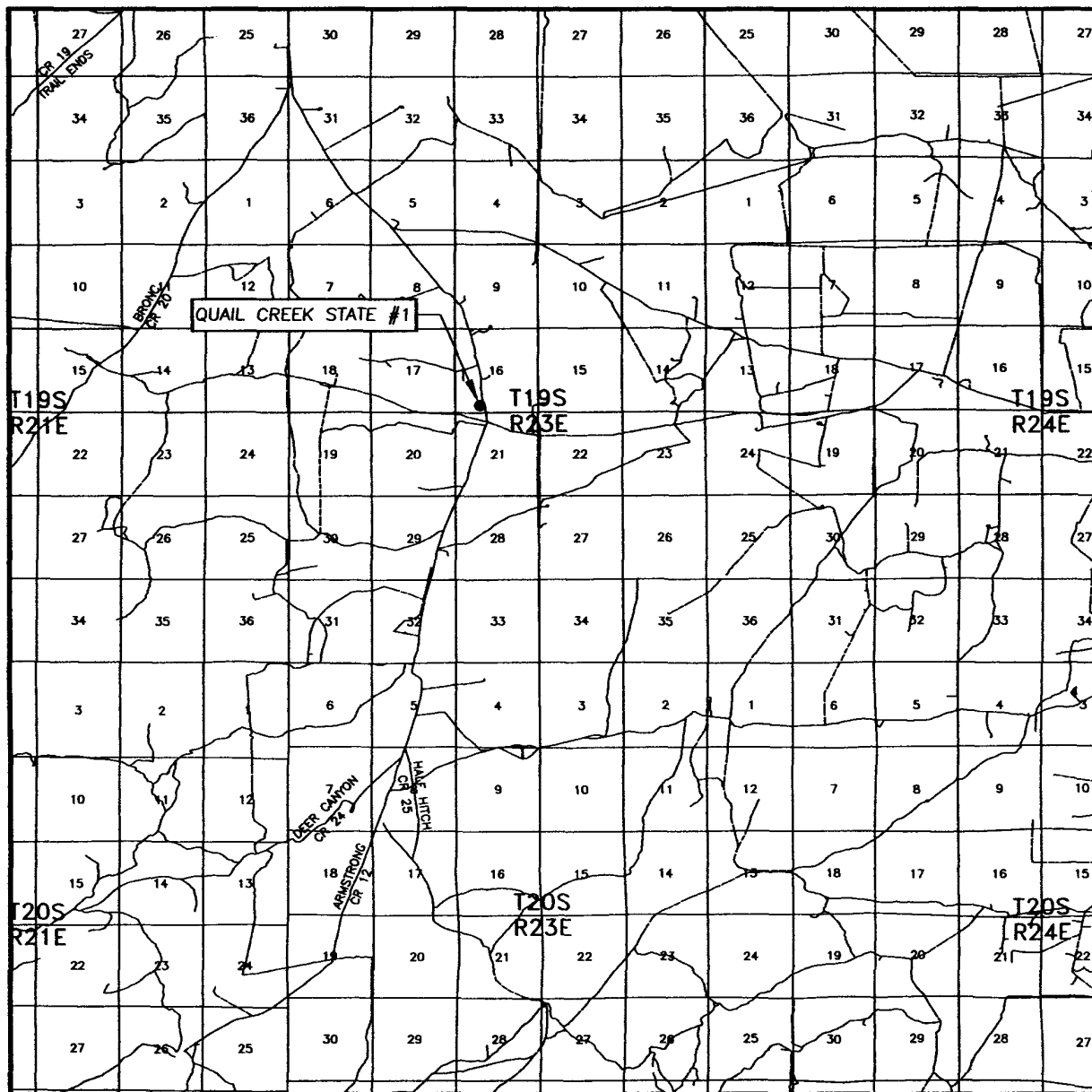
PROVIDING SURVEYING SERVICES
 SINCE 1946
JOHN WEST SURVEYING COMPANY
 412 N. DAL PASO
 HOBBS, N.M. 88240
 (505) 393-3117

MACK ENERGY CORPORATION

QUAIL CREEK STATE #1
 LOCATED 180 FEET FROM THE SOUTH LINE
 AND 1715 FEET FROM THE WEST LINE OF SECTION 16,
 TOWNSHIP 19 SOUTH, RANGE 23 EAST, N.M.P.M.,
 EDDY COUNTY, NEW MEXICO.

Survey Date: 12/07/06	Sheet 1 of 1 Sheets
W.O. Number: 06.11.1960	Dr By: J.R.
Date: 12/18/06	Disk: CD#6
06111960	Scale: 1"=100'

VICINITY MAP



SCALE: 1" = 2 MILES

SEC. 16 TWP. 19-S RGE. 23-E

SURVEY N.M.P.M.

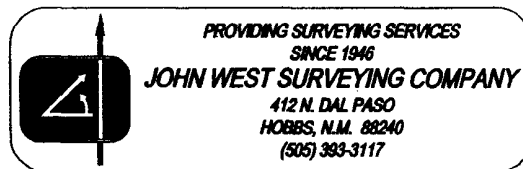
COUNTY EDDY STATE NEW MEXICO

DESCRIPTION 180' FSL & 1715' FWL

ELEVATION 3991'

OPERATOR MACK ENERGY CORPORATION

LEASE QUAIL CREEK STATE



[illegible]

CONTOUR INTERVAL:
ANTELOPE SINK, N.M. - 10'

U.S.G.S. TOPOGRAPHIC MAP
ANTELOPE SINK, N.M.

