

DISTRICT I
1625 N. French Dr., Hobbs, NM 88240

DISTRICT II
1301 W. Grand Avenue, Artesia, NM 88210

DISTRICT III
1000 Rio Brazos Rd., Artec, NM 87410

DISTRICT IV
1220 S. St. Francis Dr., Santa Fe, NM 87505

State of New Mexico
Energy, Minerals and Natural Resources Department

Form C-102
Revised October 12, 2005

Submit to Appropriate District Office
State Lease - 4 Copies
Fee Lease - 3 Copies

OIL CONSERVATION DIVISION
1220 South St. Francis Dr.
Santa Fe, New Mexico 87505

☐ AMENDED REPORT

WELL LOCATION AND ACREAGE DEDICATION PLAT

API Number 30-015-35349	Pool Code 96819	Pool Name Salt Draw, Morrow, West
Property Code 36253	Property Name PUNCH STATE COM	Well Number 1
OGRID No. 217955	Operator Name OGX RESOURCES, L.L.C.	Elevation 3096'

Surface Location

UL or lot No.	Section	Township	Range	Lot Idn	Feet from the	North/South line	Feet from the	East/West line	County
P	36	24 S	27 E		990	SOUTH	660	EAST	EDDY

Bottom Hole Location If Different From Surface

UL or lot No.	Section	Township	Range	Lot Idn	Feet from the	North/South line	Feet from the	East/West line	County
Dedicated Acres 320		Joint or Infill		Consolidation Code		Order No.			

NO ALLOWABLE WILL BE ASSIGNED TO THIS COMPLETION UNTIL ALL INTERESTS HAVE BEEN CONSOLIDATED
OR A NON-STANDARD UNIT HAS BEEN APPROVED BY THE DIVISION

	<p>OPERATOR CERTIFICATION</p> <p>I hereby certify that the information contained herein is true and complete to the best of my knowledge and belief, and that this organization either owns a working interest or unleased mineral interest in the land including the proposed bottom hole location pursuant to a contract with an owner of such a mineral or working interest, or to a voluntary pooling agreement or a compulsory pooling order heretofore entered by the division.</p> <p><i>[Signature]</i> 1-5-07 Signature Date</p> <p>Ann E. Ritchie, Agent Printed Name</p>
	<p>SURVEYOR CERTIFICATION</p> <p>I hereby certify that the well location shown on this plat was plotted from field notes of actual surveys made by me or under my supervision and that the same is true and correct to the best of my belief.</p> <p>DECEMBER 20, 2006 Date Surveyed</p> <p><i>[Signature]</i> Signature of Professional Surveyor</p> <p>7977 Certificate No.</p> <p>Basin Surveys</p>

January 8, 2007

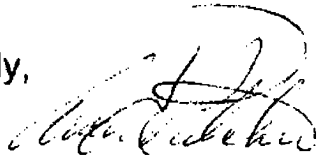
Oil Conservation Division
Attn: Bryan Arrant
1301 Grand Ave.
Artesia, NM 88210

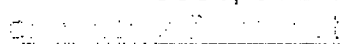
RE: OGX Resources, LLC, Punch State Com, Well #1, (P), Sec 36, T24S, R27E,
Eddy County, New Mexico

We do not anticipate encountering any H2S during the drilling or completion of the well as referenced above, as per offset drilling and the Morrow formation.

We are respectfully requesting an exemption from the H2S requirements as per NMOCD Rule 118. The anticipated total depth is 13,000' for this Malaga; Morrow (Gas) well.

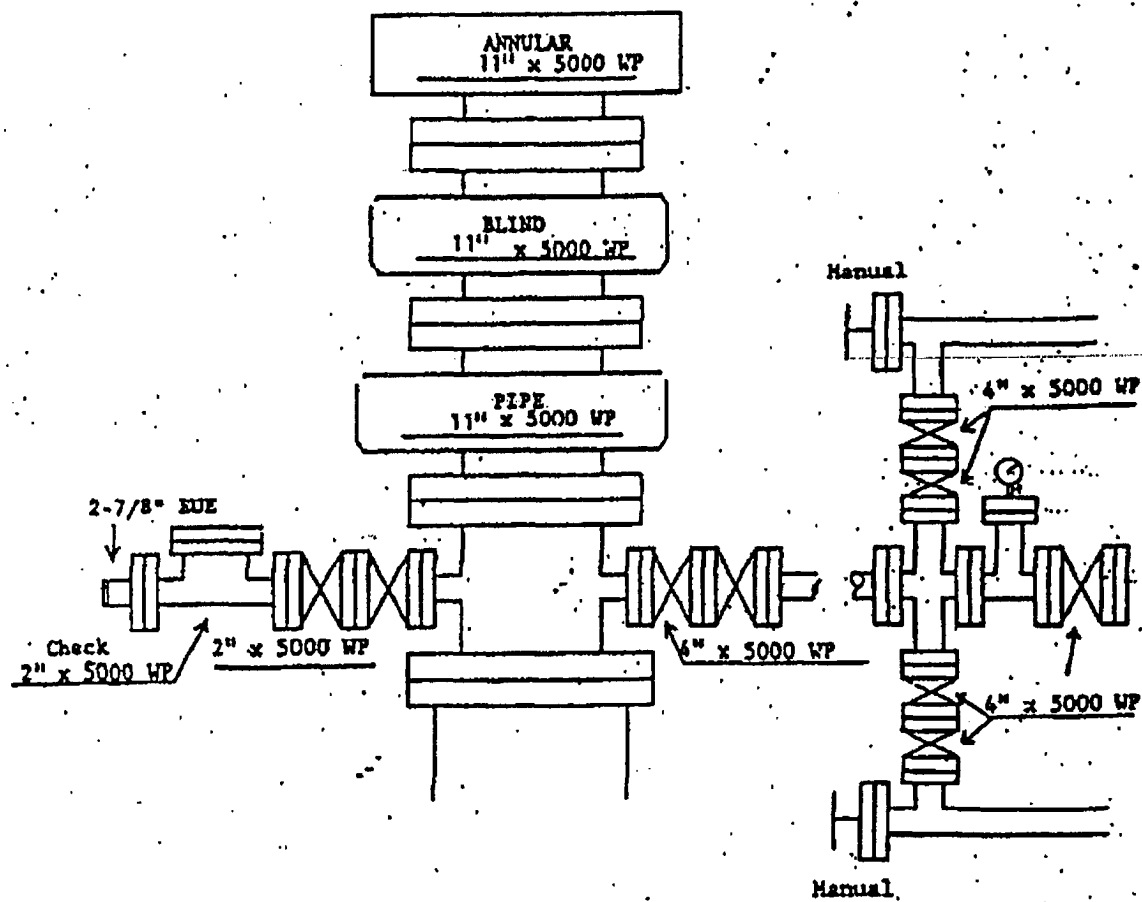
Yours truly,



Ann E. Ritchie, Regulatory Agent
OGX Resources, LLC
c/o P.O. Box 953
Midland, TX 79702
432 684-6381; 682-1458-fax


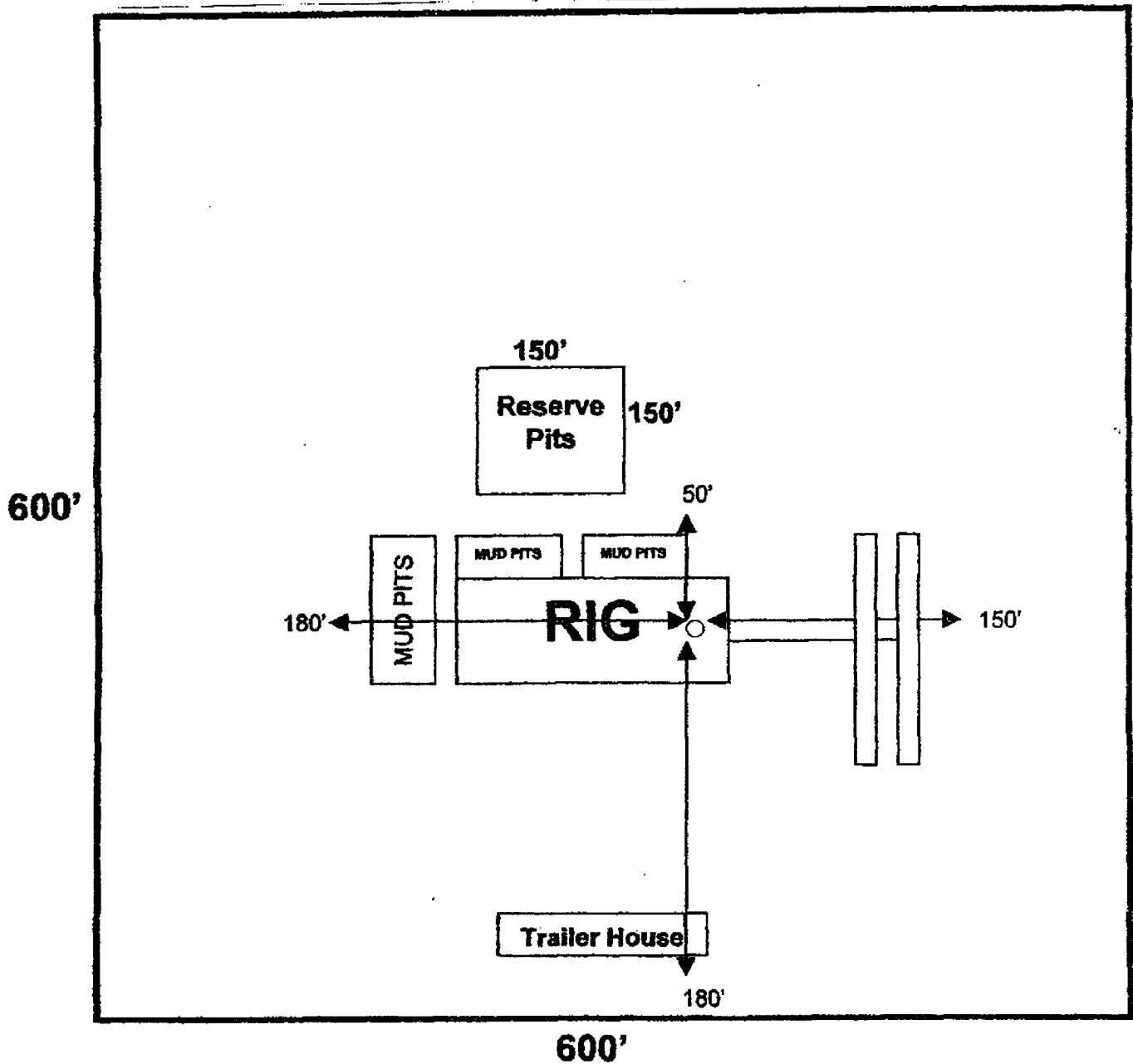
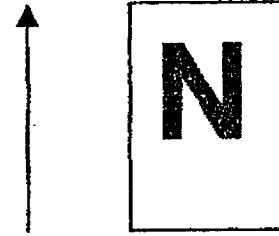
cc: OGX Resources/Midland

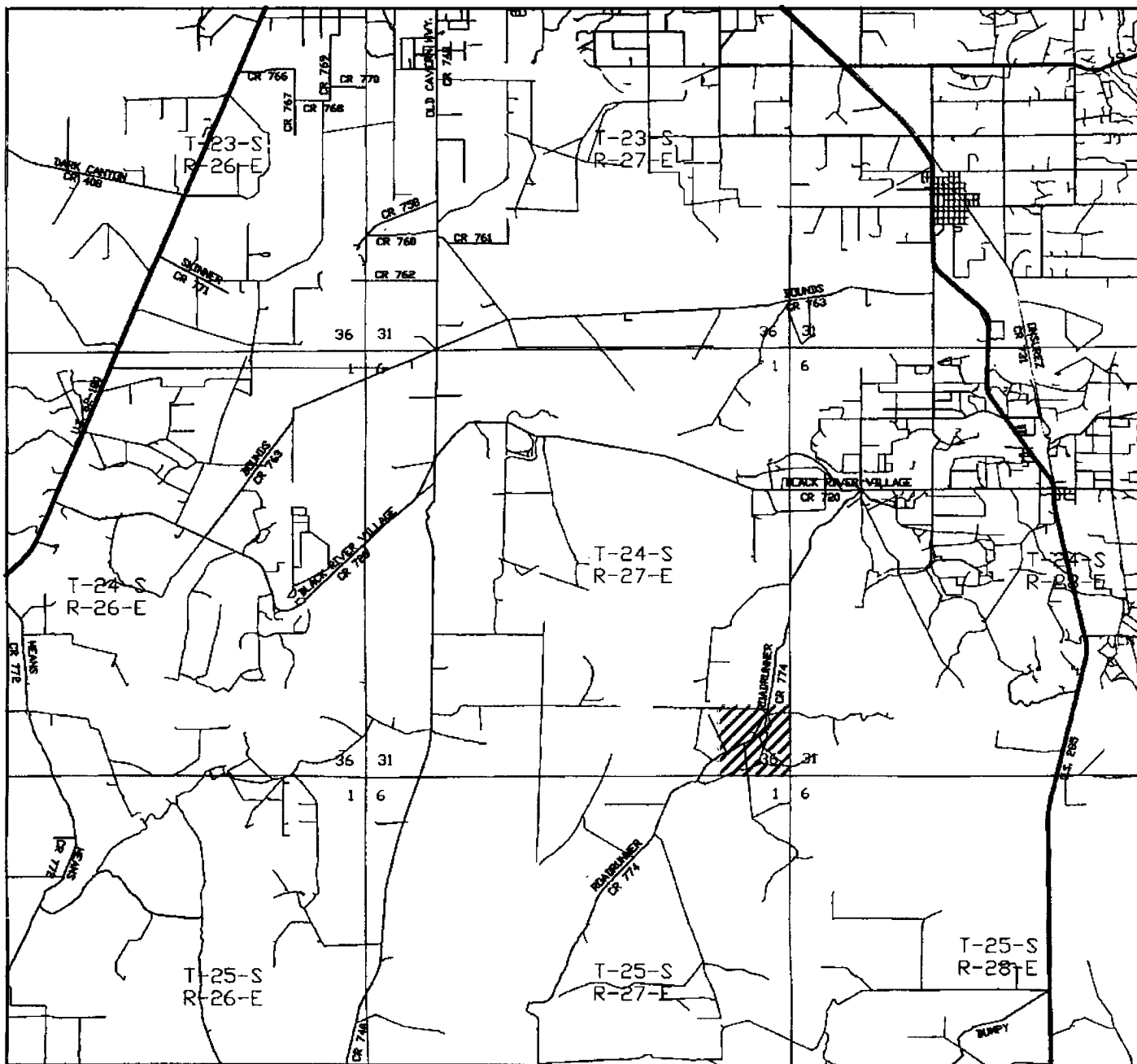
OGX Resources LLC



DRILLING RIG LAYOUT

OGX Resources, LLC.





PUNCH STATE COM #1
 990' FSL & 660' FEL
 Section 36, Township 24 South, Range 27 East,
 N.M.P.M., Eddy County, New Mexico.

basin
surveys
 focused on excellence
 in the oilfield

P.O. Box 1785
 1120 N. West County Rd.
 Hobbs, New Mexico 88241
 (505) 393-7316 - Office
 (505) 392-3074 - Fax
 basinsurveys.com

W.O. Number: 17483T

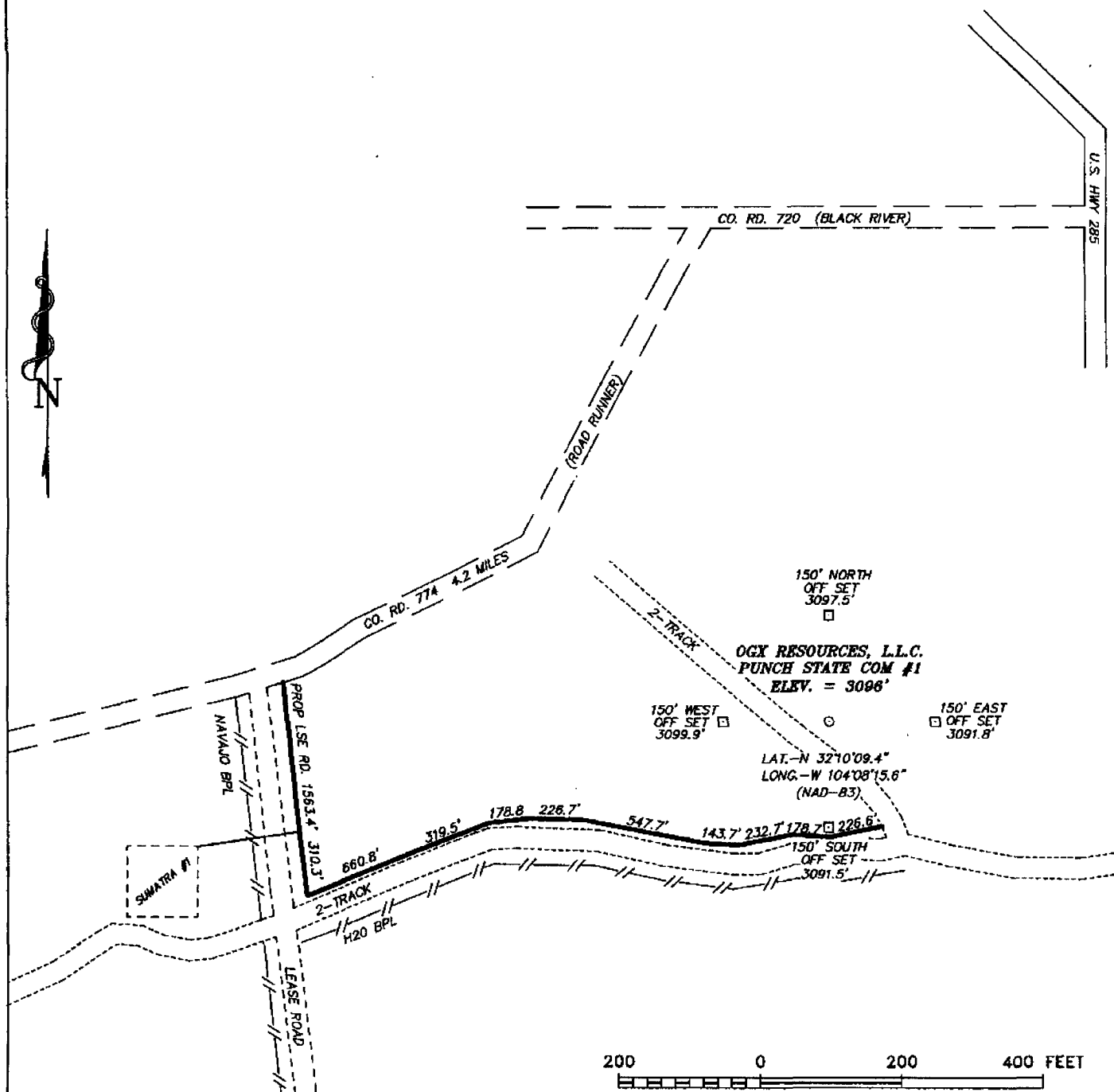
Survey Date: 12-22-2006

Scale: 1" = 2 MILES

Date: 12-27-2006

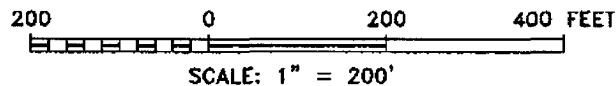
OGX
RESOURCES
L.L.C.

SECTION 36, TOWNSHIP 24 SOUTH, RANGE 27 EAST, N.M.P.M.,
EDDY COUNTY, NEW MEXICO.



DIRECTIONS TO LOCATION:

FROM THE JUNCTION OF CO. RD. 774 (ROAD RUNNER) AND CO. RD. 720 (BLACK RIVER VILLAGE) PROCEED SOUTHWEST 4.2 MILES TO NAVAJO BPL AND LEASE ROAD, GO SOUTH ON LEASE ROAD 0.4 MILE TO 2-TRACK THENCE EAST 0.5 MILE TO LOCATION.



OGX RESOURCES, L.L.C.

REF: PUNCH STATE COM #1 / Well Pad Topo

THE PUNCH STATE COM No. 1 LOCATED 990' FROM THE

SOUTH LINE AND 660' FROM THE EAST LINE OF

SECTION 36, TOWNSHIP 24 SOUTH, RANGE 27 EAST,

N.M.P.M., EDDY COUNTY, NEW MEXICO.

BASIN SURVEYS P.O. BOX 1786-HOBBS, NEW MEXICO

W.O. Number: 17483

Drawn By: J. M. SMALL

Date: 12-27-2006

Disk: 17483W

Survey Date: 12-22-2006

Sheet 1 of 1 Sheets

