

Submit 3 Copies To Appropriate District  
Office  
District I  
1625 N. French Dr., Hobbs, NM 88240  
District II  
1301 W. Grand Ave., Artesia, NM 88210  
District III  
1000 Rio Brazos Rd., Aztec, NM 87410  
District IV  
1220 S. St. Francis Dr., Santa Fe, NM  
87505

State of New Mexico  
Energy, Minerals and Natural Resources

Form C-103  
May 27, 2004

OIL CONSERVATION DIVISION  
1220 South St. Francis Dr.  
Santa Fe, NM 87505

WELL API NO. 30-015-34262
5. Indicate Type of Lease STATE <input type="checkbox"/> FEE <input checked="" type="checkbox"/>
6. State Oil & Gas Lease No.
7. Lease Name or Unit Agreement Name Long Draw 4 Federal Com
8. Well Number #1
9. OGRID Number 14744
10. Pool name or Wildcat Cemetery Morrow 74640

SUNDRY NOTICES AND REPORTS ON WELLS  
(DO NOT USE THIS FORM FOR PROPOSALS TO DRILL OR TO DEEPEN OR PLUG BACK TO A  
DIFFERENT RESERVOIR. USE "APPLICATION FOR PERMIT" (FORM C-101) FOR SUCH  
PROPOSALS.)

1. Type of Well: Oil Well ☐ Gas Well ☒ Other

2. Name of Operator  
Mewbourne Oil Company

3. Address of Operator  
PO Box 5270 Hobbs, NM 88240

4. Well Location

Unit Letter O : 990 feet from the S line and 1650 feet from the E line  
Section 4 Township 20S Range 25E NMPM Eddy County

11. Elevation (Show whether DR, RKB, RT, GR, etc.)  
3482' GL

Pit or Below-grade Tank Application ☐ or Closure ☐

Pit type \_\_\_\_\_ Depth to Groundwater \_\_\_\_\_ Distance from nearest fresh water well \_\_\_\_\_ Distance from nearest surface water \_\_\_\_\_

Pit Liner Thickness: \_\_\_\_\_ mil Below-Grade Tank: Volume \_\_\_\_\_ bbls; Construction Material \_\_\_\_\_

12. Check Appropriate Box to Indicate Nature of Notice, Report or Other Data

NOTICE OF INTENTION TO:

PERFORM REMEDIAL WORK ☐ PLUG AND ABANDON ☐  
TEMPORARILY ABANDON ☐ CHANGE PLANS ☐  
PULL OR ALTER CASING ☐ MULTIPLE COMPL ☐  
OTHER: ☐

SUBSEQUENT REPORT OF:

REMEDIAL WORK ☐ ALTERING CASING ☐  
COMMENCE DRILLING OPNS. ☐ P AND A ☐  
CASING/CEMENT JOB ☒  
OTHER: ☐

13. Describe proposed or completed operations. (Clearly state all pertinent details, and give pertinent dates, including estimated date of starting any proposed work). SEE RULE 1103. For Multiple Completions: Attach wellbore diagram of proposed completion or recompletion.

01/31/07...MI & spud 12 1/4" hole. Lost circulation at 350'. Drilled to casing point with no returns. TD'd hole @ 1205'. Ran 1205' 8 5/8" 32# J55 LT&C csg. Cemented with 3 sks GW27 frac gel followed with 180 sks Thixad Class H with additives. Mixed @ 14.6 #/g w/ 1.51 yd. Followed with 300 sks BJ Lite Class C (35:65:6) with additives. Mixed @ 12.5 #/g w/ 1.96 yd. Tail with 400 sks Class C with 2% CaCl2. Mixed @ 14.8 #/g w/ 1.34 yd. Did not circulate cmt. 1" in 8 stages with 260 sks Class C. Circulated 15 sks to surface. WOC 18 hrs. Test BOPE to 3000# and hydrl to 1500#. At 6:45 am 02/05/07, test casing to 1500# for 30mins. Test formation @ csg shoe to 12.0 ppg MWE. All held OK. Charts and schematic attached. Drilled out with 7 7/8" bit.

I hereby certify that the information above is true and complete to the best of my knowledge and belief. I further certify that any pit or below-grade tank has been/will be constructed or closed according to NMOCD guidelines ☐, a general permit ☐ or an (attached) alternative OCD-approved plan ☐.

SIGNATURE Kristi Green TITLE Hobbs Regulatory DATE 02/07/07

Type or print name Kristi Green

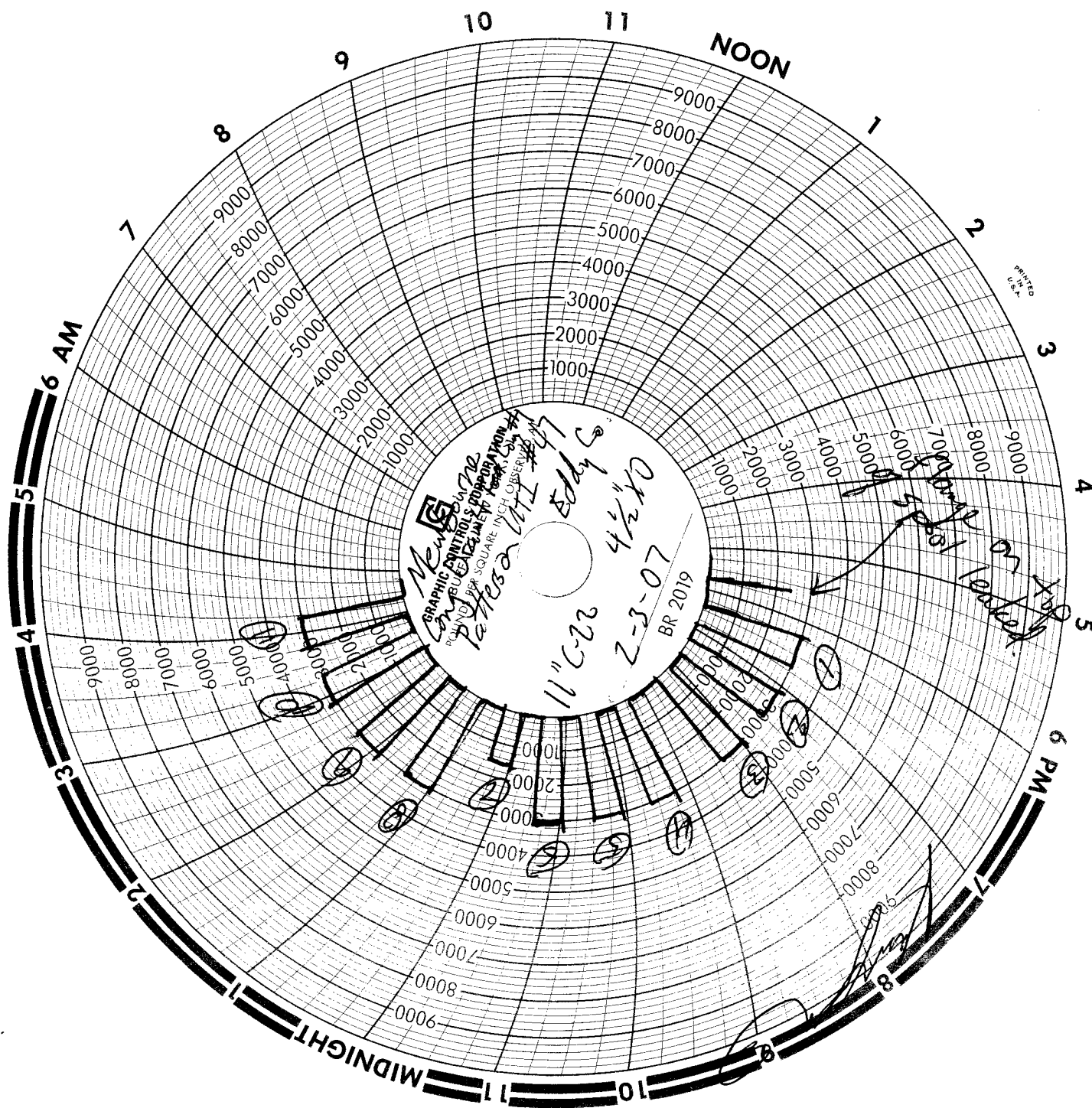
E-mail address:

Telephone No. 505-393-5905

For State Use Only

APPROVED BY: Accepted for record - NMOCD TITLE \_\_\_\_\_ DATE 2/15/07

Conditions of Approval (if any):



# MAN WELDING SERVICES, INC

Company Mewbourne Date 2-3-07  
Lease Long Draw 4 Fed Com #1 County Eddy Co  
Drilling Contractor Patterson #47 Plug & Drill Pipe Size 11" C-22 7/8" 4 1/2" X 0

## Accumulator Function Test - OO&GO#2

To Check - USABLE FLUID IN THE NITROGEN BOTTLES (III.A.2.c.i. or ii or iii)

- Make sure all rams and annular are open and if applicable HCR is closed.
- Ensure accumulator is pumped up to working pressure! **(Shut off all pumps)**
  1. Open HCR Valve. (If applicable)
  2. Close annular.
  3. Close **all** pipe rams.
  4. Open one set of the pipe rams to simulate closing the blind ram.
  5. For 3 ram stacks, open the annular to achieve the 50+ % safety factor. (5M and greater systems).
  6. **Record remaining pressure** 4625 psi. **Test Fails if pressure is lower than required.**
    - a. {950 psi for a 1500 psi system} b. {1200 psi for a 2000 & 3000 psi system }
  7. If annular is closed, open it at this time and close HCR.

---

To Check - PRECHARGE ON BOTTLES OR SPHERICAL (III.A.2.d.)

- Start with manifold pressure at, or above, maximum acceptable pre-charge pressure:
  - a. {800 psi for a 1500 psi system} b. {1100 psi for 2000 and 3000 psi system}
- 1. Open bleed line to the tank, slowly. **(gauge needle will drop at the lowest bottle pressure)**
  2. Close bleed line. Barely bump electric pump and see what pressure the needle jumps up to.
  3. **Record pressure drop** 1000 psi. **Test fails if pressure drops below minimum.**
- **Minimum:** a. {700 psi for a 1500 psi system} b. {900 psi for a 2000 & 3000 psi system}

---

To Check - THE CAPACITY OF THE ACCUMULATOR PUMPS (III.A.2.f.)

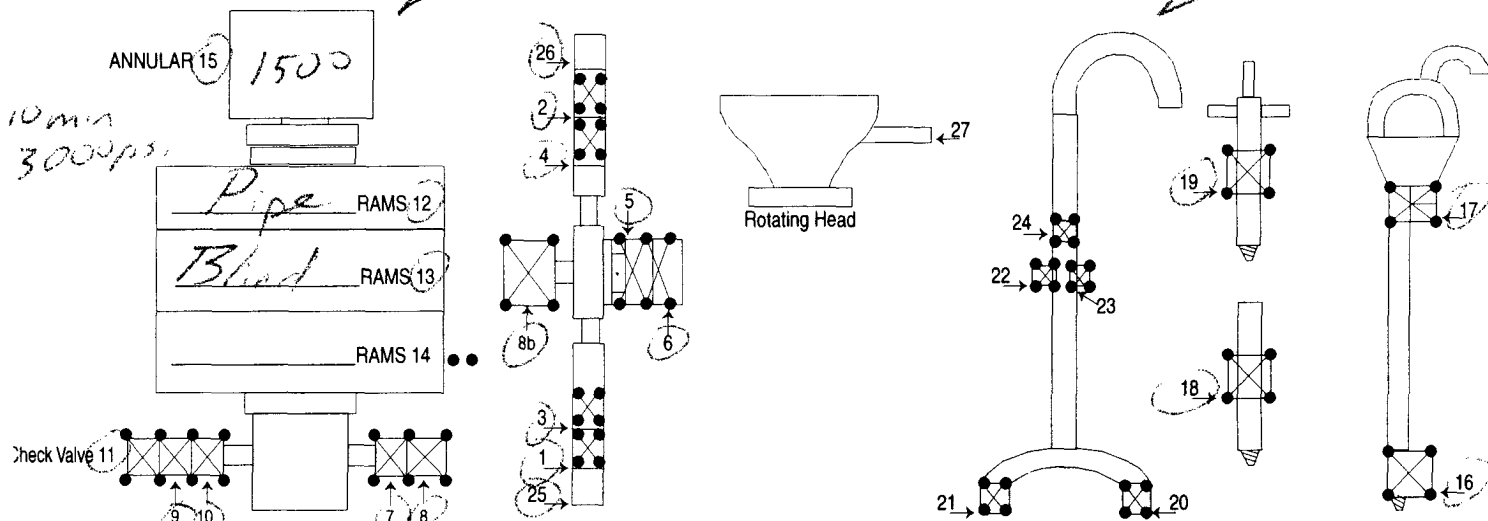
- Isolate the accumulator bottles or spherical from the pumps & manifold.
- Open the bleed off valve to the tank, {manifold psi should go to 0 psi} close bleed valve.
  1. Open the HCR valve, {if applicable}
  2. Close annular
  3. With **pumps** only, time how long it takes to regain the required manifold pressure.
  4. **Record elapsed time** 42 sec. **Test fails if it takes over 2 minutes.**
    - a. {950 psi for a 1500 psi system} b. {1200 psi for a 2000 & 3000 psi system}

*BUS:* 505 396-4540 • *FAX:* 505 396-0044



12 B 6453

Casing Valve Opened Yes Check Valve Open Yes

[illegible]

8 HR@ \$1,000<sup>00</sup> = \$1,000<sup>00</sup>  
 2 HR@ 100<sup>00</sup> = 200<sup>00</sup>  
 Mileage 182 @ 1<sup>00</sup> = \$182<sup>00</sup>  
 Methanol = \$100<sup>00</sup>

**TOTAL**
$$\begin{array}{r} 492 \\ 79 \\ \hline 1561 \end{array}$$