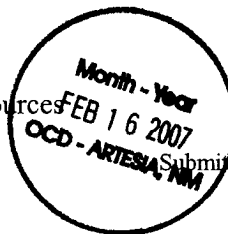


District I  
1625 N. French Dr., Hobbs, NM 88240  
District II  
1301 W. Grand Avenue, Artesia, NM 88210  
District III  
1000 Rio Brazos Road, Aztec, NM 87410  
District IV  
1220 S. St. Francis Dr., Santa Fe, NM 87505

State of New Mexico  
Energy Minerals and Natural Resources  
Oil Conservation Division  
1220 South St. Francis Dr.  
Santa Fe, NM 87505



Form C-101  
May 27, 2004

Submit to appropriate District Office

☐ AMENDED REPORT

**APPLICATION FOR PERMIT TO DRILL, RE-ENTER, DEEPEN, PLUGBACK, OR ADD A ZONE**

<sup>1</sup> Operator Name and Address YATES PETROLEUM CORPORATION 105 South Fourth Street Artesia, New Mexico 88210		<sup>2</sup> OGRID Number 25575
<sup>3</sup> Property Code 12402		<sup>4</sup> API Number 30 - 015-35433
<sup>5</sup> Property Name IRISH HILLS KW STATE		<sup>6</sup> Well No. 004
<sup>9</sup> Proposed Pool 1 WC MISS GAS		<sup>10</sup> Proposed Pool 2

**7 Surface Location**

UL or lot no.	Section	Township	Range	Lot Idn	Feet from the	North/South line	Feet from the	East/West line	County
M	2	15 S	24E	M	990	S	990	W	Eddy

**8 Proposed Bottom Hole Location If Different From Surface**

UL or lot no.	Section	Township	Range	Lot Idn	Feet from the	North/South line	Feet from the	East/West line	County
									Eddy

**Additional Well Information**

<sup>11</sup> Work Type Code New Well	<sup>12</sup> Well Type Code GAS	<sup>13</sup> Cable/Rotary	<sup>14</sup> Lease Type Code State	<sup>15</sup> Ground Level Elevation 3696
<sup>16</sup> Multiple N	<sup>17</sup> Proposed Depth 9000	<sup>18</sup> Formation Chester	<sup>19</sup> Contractor	<sup>20</sup> Spud Date ASAP
Depth to Groundwater 283'		Distance from nearest fresh water well 2 miles		Distance from nearest surface water 4000'
Pit: Liner: Synthetic <input type="checkbox"/> 12 mils thick Clay <input type="checkbox"/> Pit Volume: _____ bbls Drilling Method: _____				
Closed-Loop System <input type="checkbox"/> Fresh Water <input type="checkbox"/> Brine <input type="checkbox"/> Diesel/Oil-based <input type="checkbox"/> Gas/Air <input type="checkbox"/>				

**21 Proposed Casing and Cement Program**

Hole Size	Casing Size	Casing weight/foot	Setting Depth	Sacks of Cement	Estimated TOC
14.75	9.625	36	1200	1200	0
8.75	7	23	9000	1060	0

<sup>22</sup> Describe the proposed program. If this application is to DEEPEN or PLUG BACK, give the data on the present productive zone and proposed new productive zone. Describe the blowout prevention program, if any. Use additional sheets if necessary. Yates Petroleum Corporation proposes to drill/test the Chester and intermediate formations. Approximately 1200' of surface casing will be set and cement circulated to shut off gravel and carvings. If commercial, production casing will be run and cemented, will perforate and stimulate as needed for production. MUD PROGRAM: 0-1200' FWGel/LCM; 1200'-5200' Fresh Water; 5200'-7300'-Cut Brine; 7300'-9000' Cut Brine/Starch/KCL BOPE PROGRAM: A 3000# BOPE will be installed on the 9 5/8" casing and tested daily. H2S Contingency Plan attached.

**NOTIFY OCD OF SPUD & TIME  
TO WITNESS CEMENTING OF  
SURFACE CASING**

<sup>23</sup> I hereby certify that the information given above is true and complete to the best of my knowledge and belief. I further certify that the drilling pit will be constructed according to NM OCD guidelines ☐, a general permit ☒, or an (attached) alternative OCD-approved plan ☐.

Printed name: Cy Cowan

Title: Regulatory Agent

E-mail Address: cy@ypcnm.com

Date: February 5, 2007

Phone: 748-4372

**OIL CONSERVATION DIVISION**

Approved by:

**BRYAN G. ARRANT  
DISTRICT II GEOLOGIST**

Title:

Approval Date:

**FEB 20 2007**

Expiration Date:

**FEB 20 2008**

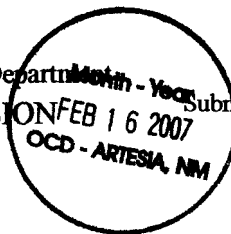
Conditions of Approval Attached ☐

District I  
1625 N. French Dr., Hobbs, NM 88240  
District II  
1301 W. Grand Avenue, Artesia, NM 88210  
District III  
1000 Rio Brazos Rd., Aztec, NM 87410  
District IV  
1220 S. St. Francis Dr., Santa Fe, NM 87505

State of New Mexico



Energy, Minerals & Natural Resources Department  
**OIL CONSERVATION DIVISION**  
1220 South St. Francis Dr.  
Santa Fe, NM 87505



Form C-102

Revised October 12, 2005

Submit to Appropriate District Office

State Lease - 4 Copies

Fee Lease - 3 Copies

☐ AMENDED REPORT

**WELL LOCATION AND ACREAGE DEDICATION PLAT**

<sup>1</sup> API Number		<sup>2</sup> Pool Code 97338		<sup>3</sup> Pool Name Wildcat; Miss Gas	
<sup>4</sup> Property Code 12402		<sup>5</sup> Property Name Irish Hills KW State			<sup>6</sup> Well Number 004
<sup>7</sup> OGRID No. 25575		<sup>8</sup> Operator Name Yates Petroleum Corporation			<sup>9</sup> Elevation 3696

**<sup>10</sup> Surface Location**

UL or lot no.	Section	Township	Range	Lot Idn	Feet from the	North/South line	Feet from the	East/West line	County
M	2	19 S	24 E	M	990	S	990	W	Eddy

**<sup>11</sup> Bottom Hole Location If Different From Surface**

UL or lot no.	Section	Township	Range	Lot Idn	Feet from the	North/South line	Feet from the	East/West line	County

<sup>12</sup> Dedicated Acres 320.6	<sup>13</sup> Joint or Infill	<sup>14</sup> Consolidation Code	<sup>15</sup> Order No.
--	-------------------------------	----------------------------------	-------------------------

No allowable will be assigned to this completion until all interests have been consolidated or a non-standard unit has been approved by the division.

	<b><sup>17</sup> OPERATOR CERTIFICATION</b> I hereby certify that the information contained herein is true and complete to the best of my knowledge and belief, and that this organization either owns a working interest or unleased mineral interest in the land including the proposed bottom hole location or has a right to drill this well at this location pursuant to a contract with an owner of such a mineral or working interest, or to a voluntary pooling agreement or a compulsory pooling order heretofore entered by the division.  Signature: <u>Cy Cowan</u> Date: <u>Feb. 5, 2007</u>  Printed Name: <u>Cy Cowan</u>			
	<b><sup>18</sup> SURVEYOR CERTIFICATION</b> I hereby certify that the well location shown on this plat was plotted from field notes of actual surveys made by me or under my supervision, and that the same is true and correct to the best of my belief.  REFER TO ORIGINAL PLAT Date of Survey Signature and Seal of Professional Surveyor:  Certificate Number			

DISTRICT I  
1025 N. French Dr., Hobbs, NM 88240

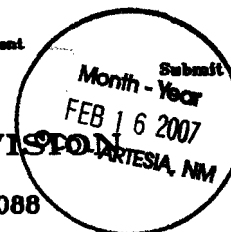
DISTRICT II  
811 South First, Artesia, NM 88210

DISTRICT III  
1000 Rio Brazos Ed., Aztec, NM 87410

DISTRICT IV  
2040 South Pacheco, Santa Fe, NM 87506

State of New Mexico  
Energy, Minerals and Natural Resources Department

OIL CONSERVATION DIVISION  
P.O. Box 2088  
Santa Fe, New Mexico 87504-2088



Form C-102  
Revised March 17, 1999  
Instruction on back  
Submit to Appropriate District Office  
State Lease - 4 Copies  
Fee Lease - 3 Copies

☐ AMENDED REPORT

WELL LOCATION AND ACREAGE DEDICATION PLAT

API Number	Pool Code	Pool Name
Property Code	Property Name IRISH HILLS "KW" STATE	Well Number 4
OGRID No. 025575	Operator Name YATES PETROLEUM CORPORATION	Elevation 3696

Surface Location

UL or lot No. M	Section 2	Township 19S	Range 24E	Lot Idn	Feet from the 990	North/South line SOUTH	Feet from the 990	East/West line WEST	County EDDY
--------------------	--------------	-----------------	--------------	---------	----------------------	---------------------------	----------------------	------------------------	----------------

Bottom Hole Location If Different From Surface

UL or lot No.	Section	Township	Range	Lot Idn	Feet from the	North/South line	Feet from the	East/West line	County
---------------	---------	----------	-------	---------	---------------	------------------	---------------	----------------	--------

Dedicated Acres	Joint or Infill	Consolidation Code	Order No.
-----------------	-----------------	--------------------	-----------

NO ALLOWABLE WILL BE ASSIGNED TO THIS COMPLETION UNTIL ALL INTERESTS HAVE BEEN CONSOLIDATED  
OR A NON-STANDARD UNIT HAS BEEN APPROVED BY THE DIVISION

				<b>OPERATOR CERTIFICATION</b>  I hereby certify that the information contained herein is true and complete to the best of my knowledge and belief.  Signature _____  Printed Name _____  Title _____  Date _____  <b>SURVEYOR CERTIFICATION</b>  I hereby certify that the well location shown on this plat was plotted from field notes of actual surveys made by me or under my supervision, and that the same is true and correct to the best of my belief.  8/26/2003 Date Surveyed Signature _____ Professional Surveyor  Certificate No. Herschel L. Jones RLS 3640 IRISH HILLS LAND SURVEYING COMPANY
N.32°41'08.4" W.104°33'51.7"				
990'				
990'				

0 330' 660' 990' 1650' 1980' 2310' 2310' 1980' 1650' 990' 660' 330' 0'

# **Yates Petroleum Corporation**

**105 S. Fourth Street  
Artesia, NM 88210**

## **Hydrogen Sulfide (H<sub>2</sub>S) Contingency Plan**

**For**

**Irish Hills KW State #4**

**990' FSL, 990' FWL**

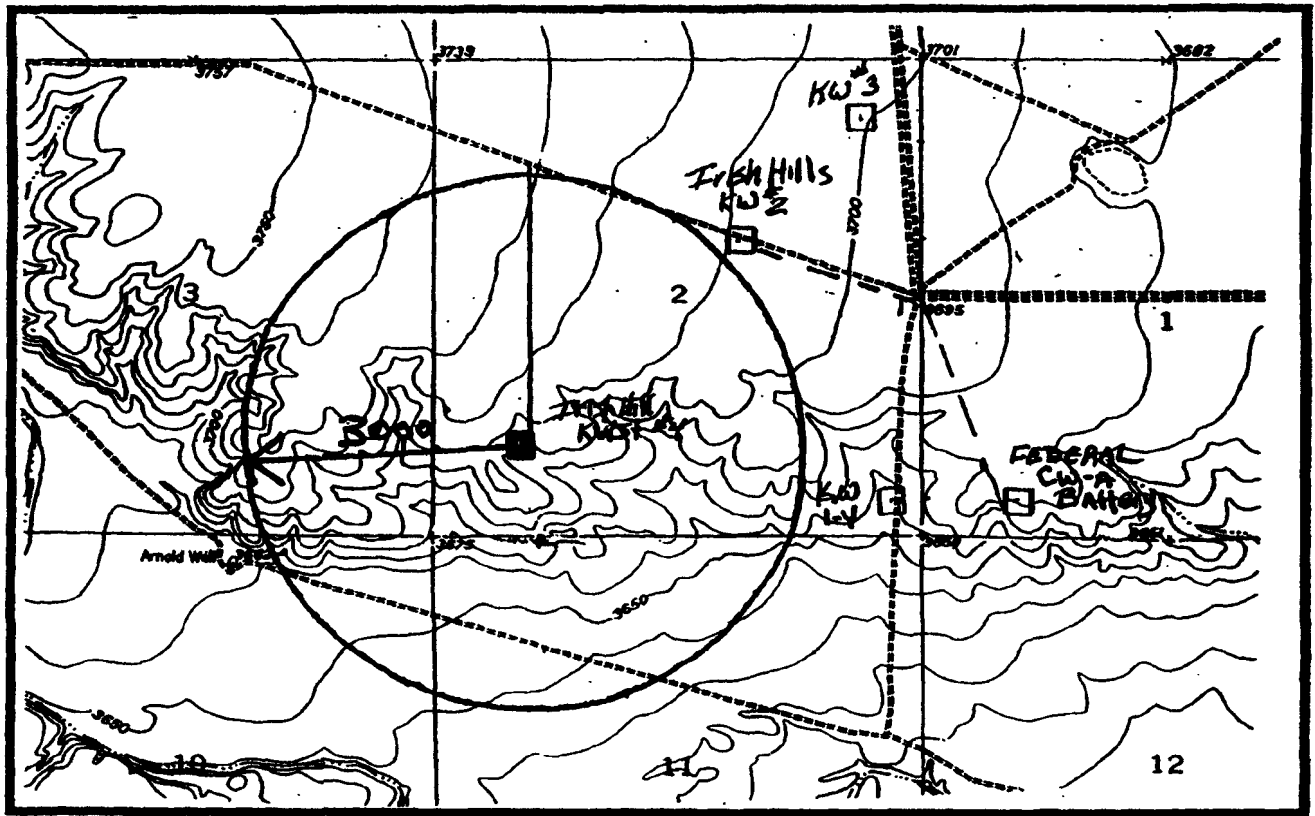
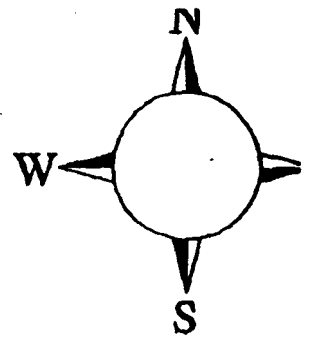
**Sec-2, T-19S, R-24E**

**Eddy County NM**

**RECEIVED  
JAN 18 2005  
OPERATIONS**

## Irish Hills KW State #4 Location

This is an open drilling site. H<sub>2</sub>S monitoring equipment and emergency response equipment will be used within 500' of zones known to contain H<sub>2</sub>S, including warning signs, wind indicators and H<sub>2</sub>S monitor.



### **Emergency Procedures**

In the case of a release of gas containing H<sub>2</sub>S, the first responder(s) must isolate the area and prevent entry by other persons into the 100 ppm ROE. Additionally the first responder(s) must evacuate any public places encompassed by the 100 ppm ROE. First responder(s) must take care not to injure themselves during this operation. Company and/or local officials must be contacted to aid in this operation. Evacuation of the public should be beyond the 100 ppm ROE.

All responders must have training in the detection of H<sub>2</sub>S, measures for protection against the gas, equipment used for protection and emergency response. Additionally, responders must be equipped with H<sub>2</sub>S monitors and air packs in order to control the release. Use the 'buddy system' to ensure no injuries during the response.

### **Ignition of Gas Source**

Should control of the well be considered lost and ignition considered, take care to protect against exposure to Sulfur Dioxide (SO<sub>2</sub>). Intentional ignition must be coordinated with the NMOCD and local officials. Additionally the NM State Police may become involved. NM State Police shall be the Incident Command on scene of any major release. Take care to protect downwind whenever there is an ignition of the gas

### **Characteristics of H<sub>2</sub>S and SO<sub>2</sub>**

Common Name	Chemical Formula	Specific Gravity	Threshold Limit	Hazardous Limit	Lethal Concentration
Hydrogen Sulfide	H <sub>2</sub> S	1.189 Air = 1	10 ppm	100 ppm/hr	600 ppm
Sulfur Dioxide	SO <sub>2</sub>	2.21 Air = 1	2 ppm	N/A	1000 ppm

### **Contacting Authorities**

YPC personnel must liaison with local and state agencies to ensure a proper response to a major release. Additionally, the OCD must be notified of the release as soon as possible but no later than 4 hours. Agencies will ask for information such as type and volume of release, wind direction, location of release, etc. Be prepared with all information available. The following call list of essential and potential responders has been prepared for use during a release. YPC Company response must be in coordination with the State of New Mexico's 'Hazardous Materials Emergency Response Plan' (HMER)

## **Yates Petroleum Corporation Phone Numbers**

YPC Office .....	(505) 748-1471
Pinson McWhorter/Operations Manager .....	(505) 748-4189
Darrel Atkins/Production Manager .....	(505) 748-4204
Ron Beasley/Prod Superintendent .....	(505) 748-4210
Al Springer/Drilling .....	(505) 748-4225
Paul Hanes/Prod. Foreman/Roswell .....	(505) 624-2805
Jim Krogman/Drilling Superintendent.....	(505) 748-4215
Artesia Answering Service .....	(505) 748-4302
(During non-office hours)	

### **Agency Call List**

#### **Eddy County (505)**

##### **Artesia**

State Police.....	746-2703
City Police.....	746-2703
Sheriff's Office .....	746-9888
Ambulance .....	911
Fire Department .....	746-2701
LEPC (Local Emergency Planning Committee) .....	746-2122
NMOCD.....	748-1283

##### **Carlsbad**

State Police.....	885-3137
City Police.....	885-2111
Sheriff's Office .....	887-7551
Ambulance .....	911
Fire Department .....	885-2111
LEPC (Local Emergency Planning Committee).....	887-3798
US Bureau of Land Management.....	887-6544

New Mexico Emergency Response Commission (Santa Fe)	(505)476-9600
24 HR .....	(505) 827-9126
National Emergency Response Center (Washington, DC)	...(800) 424-8802

##### **Other**

Boots & Coots IWC .....	1-800-256-9688 or (281) 931-8884
Cudd Pressure Control.....	(915) 699-0139 or (915) 563-3356
Halliburton .....	(505) 746-2757
B. J. Services.....	(505) 746-3569

Flight For Life -4000 24th St, Lubbock, TX .....	(806) 743-9911
Aerocare -Rr 3 Box 49f, Lubbock, TX .....	(806) 747-8923
Med Flight Air Amb 2301 Yale Blvd SE #D3, Albuq, NM .....	(505) 842-4433
S B Air Med Svc 2505 Clark Carr Loop SE, Albuq, NM .....	(505) 842-4949