

Submit 3 Copies To Appropriate District Office
District I
1625 N. French Dr., Hobbs, NM 88240
District II
1301 W. Grand Ave., Artesia, NM 88210
District III
1000 Rio Brazos Rd., Aztec, NM 87410
District IV
1220 S. St. Francis Dr., Santa Fe, NM 87505

State of New Mexico
Energy, Minerals and Natural Resources

Form C-103
May 27, 2004

OIL CONSERVATION DIVISION
1220 South St. Francis Dr.
Santa Fe, NM 87505

WELL API NO. 30-015-34575
5. Indicate Type of Lease STATE <input checked="" type="checkbox"/> FEE <input type="checkbox"/>
6. State Oil & Gas Lease No.
7. Lease Name or Unit Agreement Name

Month
MAY 30 2007
OCD - AK

SUNDRY NOTICES AND REPORTS ON WELLS
(DO NOT USE THIS FORM FOR PROPOSALS TO DRILL OR TO DEEPEN OR PLUG BACK TO A DIFFERENT RESERVOIR. USE "APPLICATION FOR PERMIT" (FORM C-101) FOR SUCH PROPOSALS.)

1. Type of Well: Oil Well ☐ Gas Well ☒ Other

2. Name of Operator
Devon Energy Production Company, LP

3. Address of Operator
20 North Broadway Oklahoma City, Oklahoma 73102-8260 (405) 228-8699

4. Well Location
Unit Letter D : 920 feet from the North line and 990 feet from the West line
Section 16 Township 23S Range 29E NMPM Eddy County

11. Elevation (Show whether DR, RKB, RT, GR, etc.)
2964'

Pit or Below-grade Tank Application ☐ or Closure ☐

Pit type _____ Depth to Groundwater _____ Distance from nearest fresh water well _____ Distance from nearest surface water _____

Pit Liner Thickness: _____ mil Below-Grade Tank: Volume _____ bbls; Construction Material _____

12. Check Appropriate Box to Indicate Nature of Notice, Report or Other Data

NOTICE OF INTENTION TO:

PERFORM REMEDIAL WORK ☐ PLUG AND ABANDON ☐
TEMPORARILY ABANDON ☐ CHANGE PLANS ☐
PULL OR ALTER CASING ☐ MULTIPLE COMPL ☐

OTHER: ☐

SUBSEQUENT REPORT OF:

REMEDIAL WORK ☐ ALTERING CASING ☐
COMMENCE DRILLING OPNS. ☐ P AND A ☐
CASING/CEMENT JOB ☐

OTHER: Continue Uphole ☒

13. Describe proposed or completed operations. (Clearly state all pertinent details, and give pertinent dates, including estimated date of starting any proposed work). SEE RULE 1103. For Multiple Completions: Attach wellbore diagram of proposed completion or recompletion.

- MIRU WSU. Conduct safety meeting w/ crew, including a summary discussion of this entire procedure. NU 5000 psi BOPE and test to full working pressure psi per company guidelines.
- Kill well if necessary. Unset production packer and POH with BHA and 2-3/8" production tubing.
- MIRU WLSU. NU lubricator/ wireline BOPE rated to 10,000 psi and test to full working pressure. Run gauge ring and junk basket for 4 1/2"/13.5 ppf liner to 11700'.
- RIH with CIBP and set @ 11,670' +/- Correlate Schlumberger GR-CNL-LDT (7/17/06) (strip attached). POH with setting tool.
- Dump bail 35' of cement on top of CIBP.
- Test casing/ liner to 8000 psi.
- RIH with 3-1/8" casing gun to perforate as follows, 1 SPF, 120° phase.

11,143' - 11,456. POH and rig down WLSU. (Continued on the attached Page 2)

I hereby certify that the information above is true and complete to the best of my knowledge and belief. I further certify that any pit or below-grade tank has been/will be constructed or closed according to NMOCD guidelines ☐, a general permit ☐ or an (attached) alternative OCD-approved plan ☐.

SIGNATURE Judy A. Barnett TITLE Regulatory Analyst DATE 5/29/07

Type or print name: Judy A. Barnett E-mail address: Judith.Barnett@dvn.com Telephone No. (405) 228-8699 For State Use Only

APPROVED BY: _____ TITLE _____ DATE _____
Conditions of Approval (if any): _____

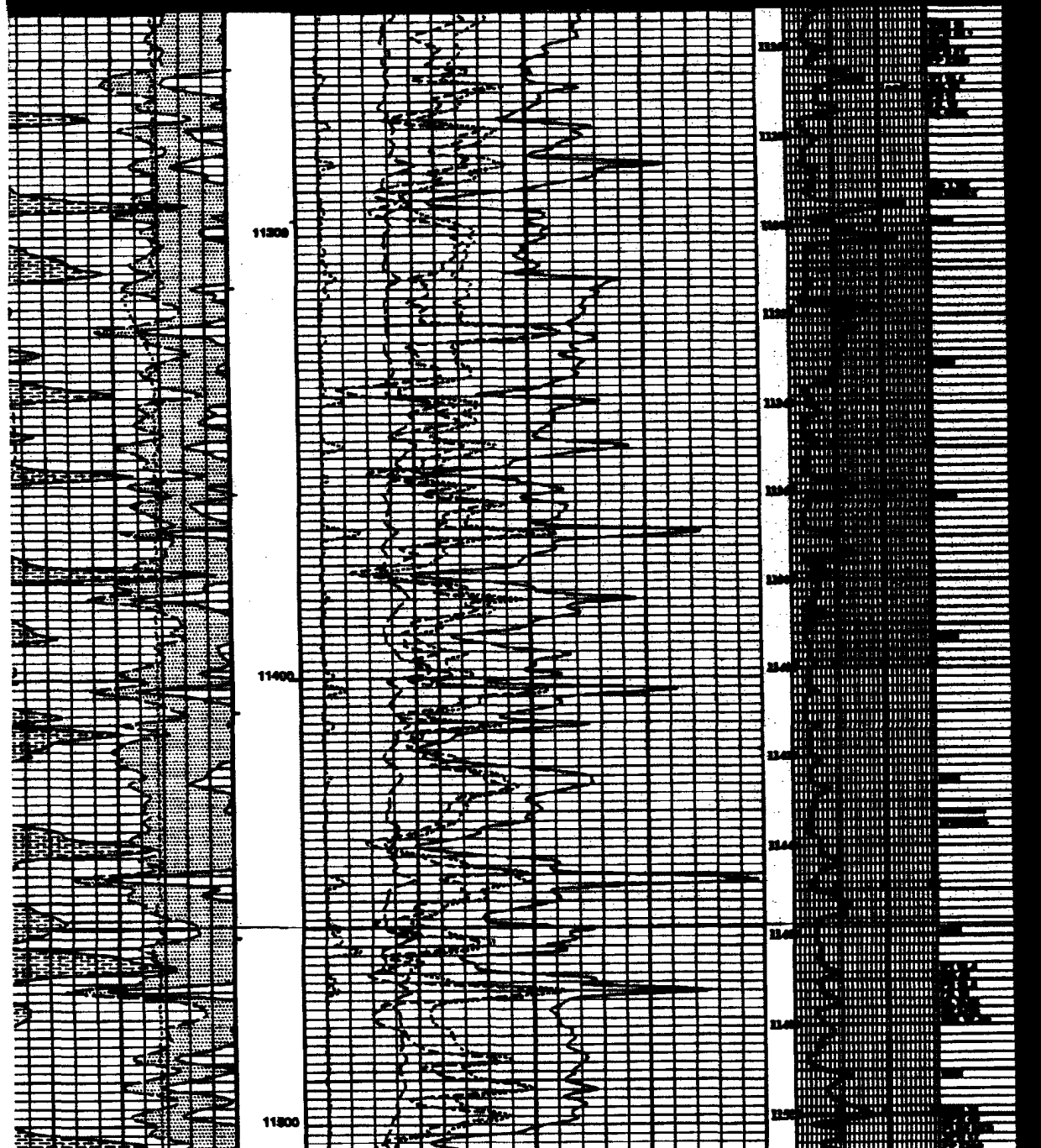
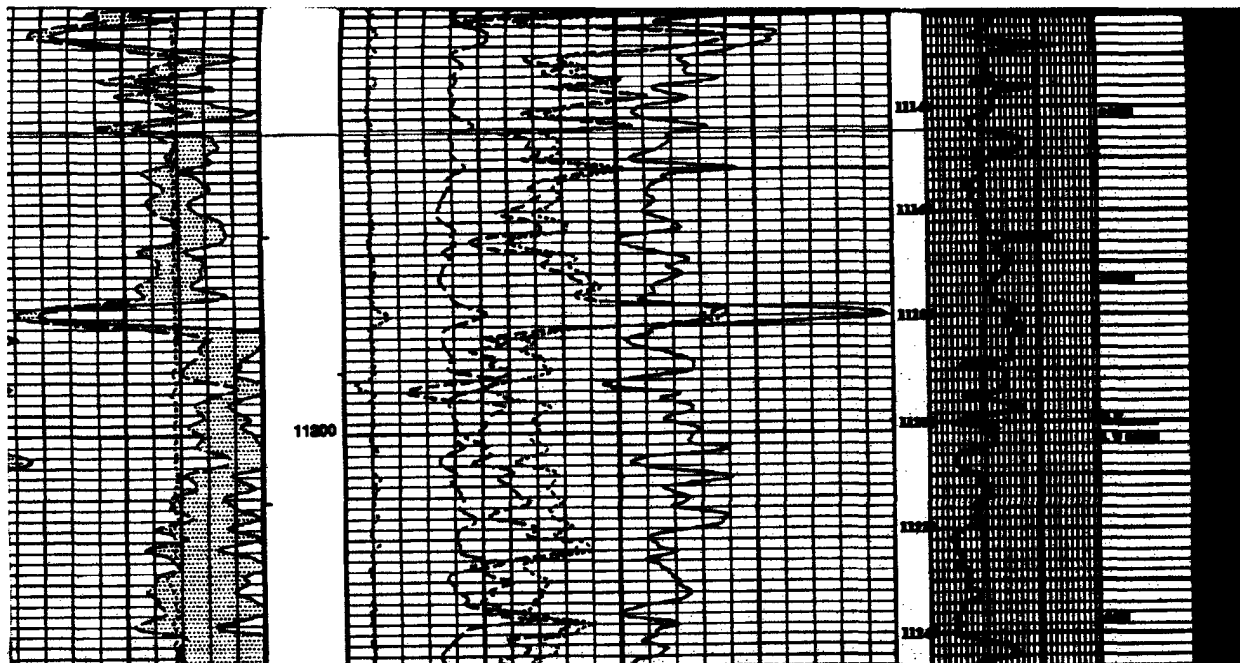
Spud 16 State 6

API# 30-015-34575

Page 2

Continued from Form C-103

8. RU B.J. services to FRAC per BJ proposal (to follow).
9. Flow well back immediately at $\frac{1}{2}$ to 1 BPM through flowback separator and test until further notice. RD BJ.
10. PU & lubricate in a wireline re-entry guide, 1.81" R-profile nipple with no-go and pump-out plug, pup joint, 4½" wireline-set, tubing retrievable production packer rated to 10k psi, and on-off tool w/ 1.81" F- profile on wireline. Position end of assembly at approximately 11,100' +/- and set packer. POH with setting tool and RD WLSU.
11. RIH with on-off shuck and 2-3/8"/4.7 ppf/ P-110/ EUE production tubing. Circulate tubing-casing annulus with packer fluid (2% KCl w/ oxygen scavenger), then latch onto on-off tool.
12. NU 10,000 psi production tree and test. Rig down WSU.
13. Pressure up to shear pump-out plug.
14. Swab well in if necessary and test.



DEVON ENERGY CORP.

SPUD 16" ST #8

(GAS)

LAGUNA SALADO Field, EDDY Co., NM

Area: POTATO BASIN AF

920' FNL, 990' FVL, Sec 16, 23S 28E.

Elev: 2981.0' (17.0' AGL)

Last updated by:

Jim Cromer 08/10/2006

PARTIAL SCHEMATIC

(8400' - TD)

Surface Casing Record

13.375' / 48.00# / H-40/ 8RD @ 364'

Intermediate Casing Record

9.625' / 40.00# / J-55/ 8RD @ 2975'

Production Casing Record

7.00' / 26.00# / P110/ LTC @ 10478'

Production Liner Record

4.50' / 13.50# / P110/ 8RD @ 10170'-12501'

Tubing Record

2.375' / 4.70# / N-80/ EUE @ 11646'

Well History (spudded 05/27/2006):

7/06 - DC. Ran 7" csg set @ 10478'. Stage 2 cmt aborted - could not circ through DV tool. Set 13.5# HCP110 LTC liner @ 12,501'. TOL @ 10,169'. cmt w/300 sx CI H. Dress TOL and test to 1000 psi. Ran CBL in 7" csg, TOC @ 300'. PF ATKA 12273 - 76', 12137 - 47' and 12078 - 102' w/ 2 jspl, 120 phase. Ran pkr on tbg. TIH w/ 2-3/8" WL Re-entry guide, 2-3/8" X 1.78" "R" NIP, 1 1/2 2-3/8" N-80, 4 1/2" X 2-3/8" Arrowset 1-XX pkr, 4 1/2" T-2 O/O tool w/ 1.81" F nip, 377 ft 2-3/8" N-80 tbg to 12,001'. Set pkr, ACDZ w/ 4k g 15% + 4000 gal CO2 + 70 1.3 SG BS. Flush w/ 2k G CO2. 7400# brk dn psi. MIN TP = 7250#, MAX = 7790#, ATP = 7450# @ 4 BPM. ISDP = 5360#, 5 min 5355#, 10 min 5348#. Open on 12/84 chk @ 5200#. Alternate flow, swab. Minimal gas and fluid entry.

Add pay 11,712 - 12012 (gross interval). RE-ACDZ Atoka Bank 12078 - 102' w/ 7k gal. ACDZ new perms 11,712 - 12,012' w/ 4500g. Ran packer and production tubing.

7.000' csg @10478'
w/2310 sx

2.375" tbg @11646' (PKR: on-off tool w/ 1.81" p

11712-11766'
(ATKA)

PF:11806-12012' (ATKA)

12137-12147'
(ATKA)

PF: 12078 - 12102' (ATKA BK)

PF:12273-12276' (ATKA)

Plugs:

FLTC @12410'

Perf Detail

Interval sqf Date

4.500" lnr: 10170'
-12501' w/ 300 sx

TD = 12691'

Comments: Atoka Bank offset dev. to 16-5

API# 30-015-34575

Current status: SHUT

DEVON ENERGY CORP.

SPUD 16 ST #8

(GAS)

LAGUNA SALADO Field, EDDY Co., NM

Area: POTATO BASIN AP

920' FNL, 990' FVL, Sec 16, 23S 28E.

Elev: 2961.0' (17.0' AGL)

Last updated by:

Jim Cromer 08/10/2006

PARTIAL SCHEMATIC

(8400' - TD)

Surface Casing Record
13.375' / 48.00# / H-40 / 8RD @ 364'

Intermediate Casing Record
9.625' / 40.00# / J-55 / 8RD @ 2975'

Production Casing Record
7.00' / 26.00# / P110 / LTC @ 10478'

Production Liner Record
4.50' / 13.50# / P110 / 8RD @ 10170'-12501'

Tubing Record
2.375' / 4.70# / N-80 / EUE @ 11075'

Well History (asudded 05/27/2006):

7/06 - DC. Ran 7" csg set @ 10478'. Stage 2 cmt aborted - could not circ through DV tool. Set 13.5# HCP110 LTC liner @ 12,501'. TOL @ 10,169'. cmt w/300 sx CI H. Dress TOL and test to 1000 psi. Ran CBL in 7" csg, TOC @ 300'. PF ATKA 12273 - 78', 12137 - 47' and 12078 - 102' w/ 2 jsp, 120 phase. Ran plr on tbg. TIH w/ 2-3/8" WL Re-entry guide, 2-3/8" X 1.78" "R" NIP, 1 jt 2-3/8" N-80, 4 1/2" X 2-3/8" Arrowset 1-XX pkr, 4 1/2" T-2 O/O tool w/ 1.81" F nip, 377 jt 2-3/8" N-80 tbg to 12,001'. Set plr, ACDZ w/ 4k g 15% + 4000 gal CO2 + 70 1.3 SG BS. Flush w/ 2k G CO2. 7400# brk dn psi. MIN TP = 7250#, MAX = 7796#, ATP = 7450# @ 4 BPM. ISDP = 5369#, 5 min 5355#, 10 min 5348#. Open on 12/64 chk @ 5200#. Alternate flow, swab. Minimal gas and fluid entry.

Add pay 11,712 - 12012 (gross interval). RE-ACDZ Atoka Bank 12078 - 102' w/ 7k gal. ACDZ new perms 11,712 - 12,012' w/ 4500g. Ran packer and production tubing.

7.000" csg @10478'
w/2310 sx

2.375" tbg @11075' (PKR: on-off tool w/ 1.81" p)

PF: 11143 -11456'
(PROP)

11712-11766'
(ATKA)

12137-12147'
(ATKA)

PF:11806-12012' (ATKA)

PF: 12078 -12102' (ATKA BK)

PF:12273-12278' (ATKA)

4.500" lnr: 10170'
-12501' w/ 300 sx

Plugs:

CSP @11635'
FLTC @12410'

Perf Detail

Interval	scf	Date
11143-11456'	1	/ /

TD = 12691'

Comments: Atoka Bank offset dev. to 16-5

API# 30-015-34575

Current status: SHUT