

District I
1625 N. French Dr., Hobbs, NM 88240
District II
811 South First, Artesia, NM 88210
District III
1000 Rio Brazos Road, Aztec, NM 87410
District IV
2040 South Pacheco, Santa Fe, NM 87505

State of New Mexico
Energy Minerals and Natural Resources

Oil Conservation Division
2040 South Pacheco
Santa Fe, NM 87505

Form C-101
Revised March 17, 1999

Submit to appropriate District Office
State Lease - 6 Copies
Fee Lease - 5 Copies

AMENDED REPORT

APPLICATION FOR PERMIT TO DRILL, RE-ENTER, DEEPEN, PLUG BACK, OR ADD A ZONE

¹ Operator Name and Address Devon Louisiana Corporation 20 N. Broadway, Suite 1500 Oklahoma City, OK 73102-8260		² OGRID Number 169355
⁴ Property Code	⁵ Property Name EDDY GE STATE COM.	³ API Number 30-015- 33017
		⁶ Well No. 3

⁷ Surface Location

UL or lot no.	Section	Township	Range	Lot Idn	Feet from the	North/South line	Feet from the	East/West line	County
M	23	20S	27E		660'	SOUTH	660'	WEST	EDDY, NM

⁸ Proposed Bottom Hole Location If Different From Surface

UL or lot no.	Section	Township	Range	Lot Idn	Feet from the	County
⁹ Proposed Pool 1 BUTTEN FLAT AVALON (MORROW)						Cement to cover all oil, gas and water bearing zones.

¹¹ Work Type Code N	¹² Well Type Code G	¹³ Cable/Rotary R	¹⁴ Lease Type Code S	¹⁵ Ground Level Elevation GL 3297'
¹⁶ Multiple N/A	¹⁷ Proposed Depth 11,350'	¹⁸ Formation Morrow	¹⁹ Contractor Unknown	²⁰ Spud Date 10/15/2003

²¹ Proposed Casing and Cement Program

Hole Size	Casing Size	Casing weight/foot	Setting Depth	Sacks of Cement	Estimated TOC
17 1/2"	13 3/8"	48# H-40	500'	610	surface
12 1/4"	8 5/8"	32# J-55	2,200'	1600	surface
8 3/4"	5 1/2"	17# HCP-110	11,350'	900	4000'
Fresh Water To 8 5/8" casing					

²² Describe the proposed program. If this application is to DEEPEN or PLUG BACK, give the data on the present productive zone and proposed new productive zone.
Describe the blowout prevention program, if any. Use additional sheets if necessary.

Devon plans to drill this well to a total depth of 11,350 feet and complete it as a Morrow development well. If it is deemed non-commercial then it will be plugged and abandoned in accordance with the rules and regulations established by the New Mexico OCD. Blowout prevention equipment will be installed while drilling the intermediate and production holes. Attached are C102 plat, vicinity maps, BOP equipment schematics, and H2S plan.

²³ I hereby certify that the information given above is true and complete to the best of my knowledge and belief. Signature: Candace R. Graham Printed Name: Candace R. Graham X4520 Title: Engineering Tech. Date: 08/22/2003		OIL CONSERVATION DIVISION Approved by: Jim W. Green Title: District Supervisor Approval Date: SEP 28 2003 Expiration Date: SEP 28 2004 Conditions of Approval Attached <input type="checkbox"/>	
Phone: (405)235-3611			

NOTIFY OCD SPUD & TIME
TO WITNESS 8 5/8" CASING

DISTRICT I
P.O. Box 1880, Hobbs, NM 88241-1880

DISTRICT II
P.O. Drawer DD, Artesia, NM 88211-0719

DISTRICT III
1000 Rio Brazos Rd., Aztec, NM 87410

DISTRICT IV
P.O. BOX 2088, SANTA FE, N.M. 87504-2088

State of New Mexico
Energy, Minerals and Natural Resources Department

OIL CONSERVATION DIVISION
P.O. Box 2088
Santa Fe, New Mexico 87504-2088

Form C-102
Revised February 10, 1994
Submit to Appropriate District Office
State Lease - 4 Copies
Fee Lease - 3 Copies

WELL LOCATION AND ACREAGE DEDICATION PLAT

☐ AMENDED REPORT

API Number	Pool Code	Pool Name
		Avalon (Morrow)
Property Code	Property Name	Well Number
	EDDY GE STATE COM.	3
OGRID No.	Operator Name	Elevation
169355	DEVON ENERGY PRODUCTION COMPANY, L.P. Devon Louisiana Corporation	3297'

Surface Location

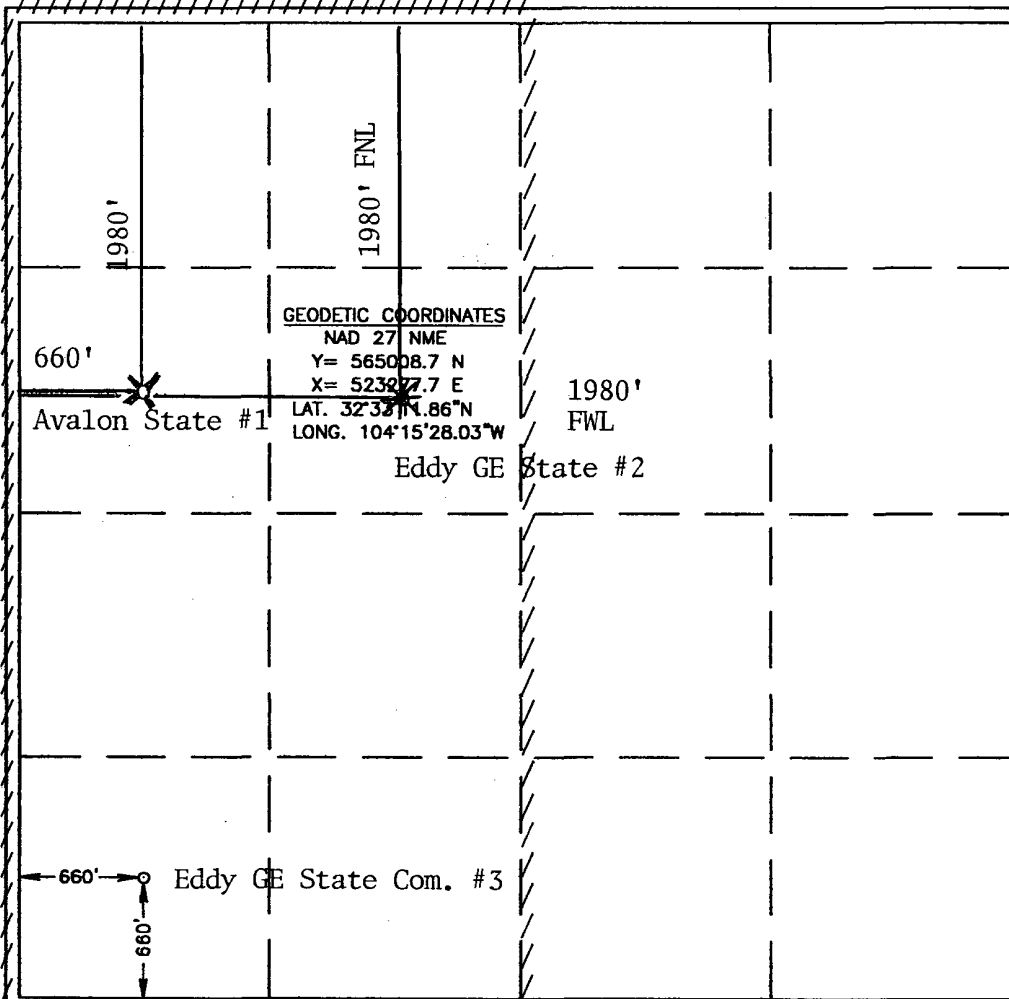
UL or lot No.	Section	Township	Range	Lot Idn	Feet from the	North/South line	Feet from the	East/West line	County
M	23	20-S	27-E		660'	SOUTH	660'	WEST	EDDY

Bottom Hole Location If Different From Surface

UL or lot No.	Section	Township	Range	Lot Idn	Feet from the	North/South line	Feet from the	East/West line	County

Dedicated Acres	Joint or Infill	Consolidation Code	Order No.
320			

NO ALLOWABLE WILL BE ASSIGNED TO THIS COMPLETION UNTIL ALL INTERESTS HAVE BEEN CONSOLIDATED
OR A NON-STANDARD UNIT HAS BEEN APPROVED BY THE DIVISION



OPERATOR CERTIFICATION

I hereby certify that the information contained herein is true and complete to the best of my knowledge and belief.

Signature: *[Signature]*
Printed Name: Tom Pepper
Title: Operations Engr ADUs
Date: 8/22/03

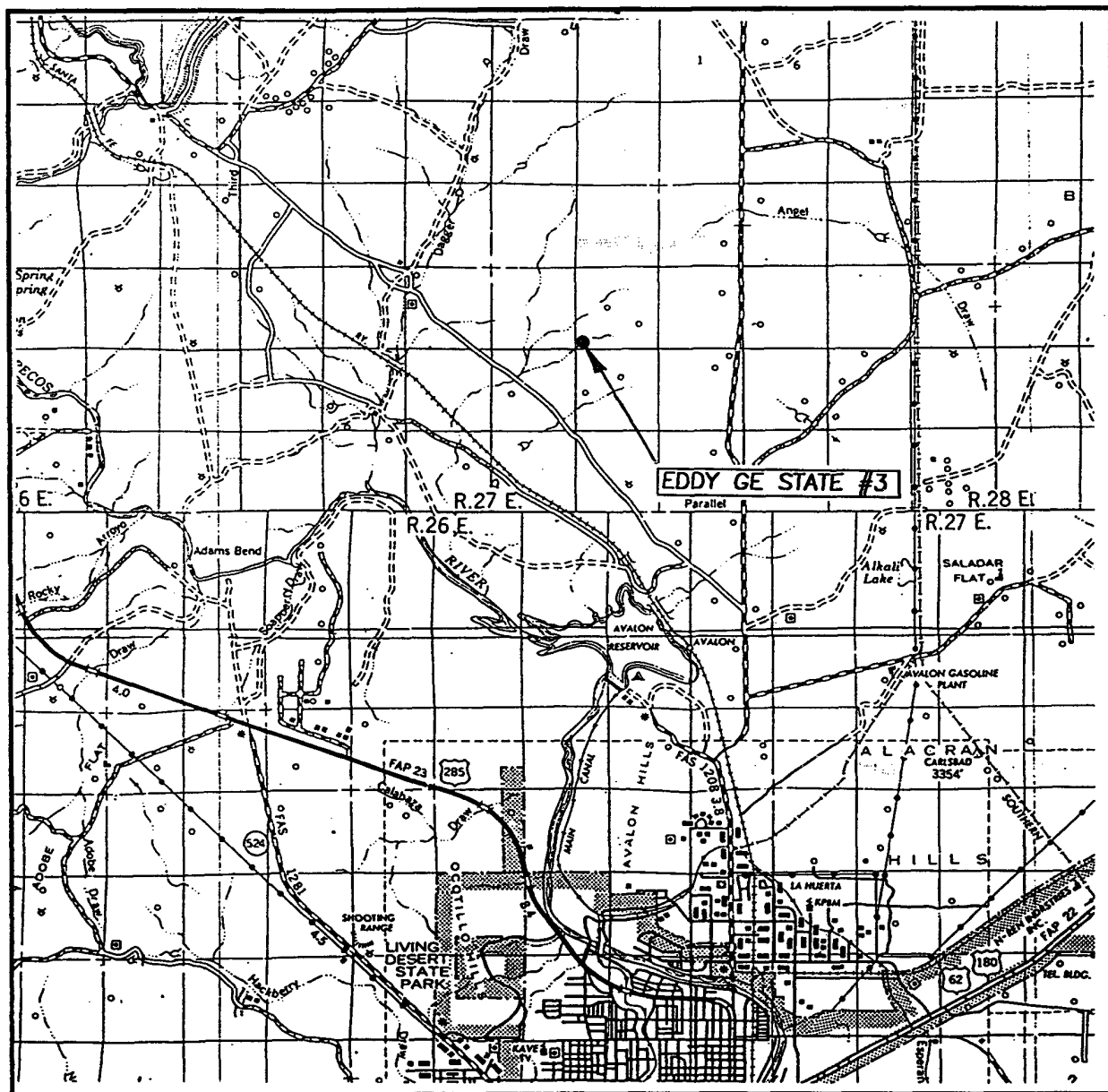
SURVEYOR CERTIFICATION

I hereby certify that the well location shown on this plat was plotted from field notes of actual surveys made by me or under my supervision, and that the same is true and correct to the best of my belief.

August 19, 2003

Date Surveyed: _____ AWB
Signature & Seal of Professional Surveyor: *[Signature]*
Certificate No. RONALD E. KIDSON 3239
GARY KIDSON 12641

VICINITY MAP



SCALE: 1" = 2 MILES

SEC. 23 TWP. 20-S RGE. 27-E

SURVEY N.M.P.M.

COUNTY EDDY

DESCRIPTION 660' FSL & 660' FWL

ELEVATION 3297'

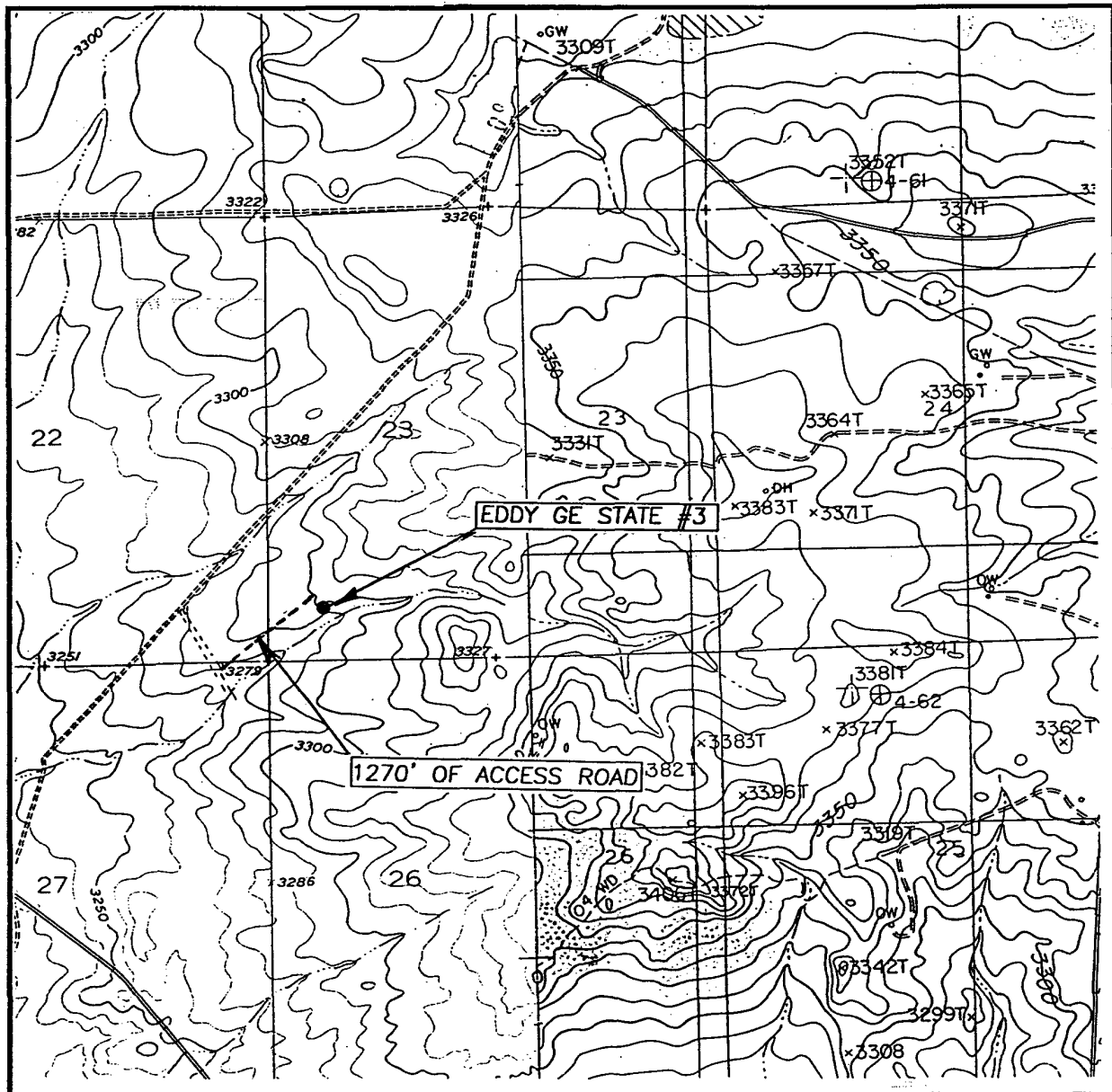
LOUISIANA CORPORATION

OPERATOR DEVON ENERGY PROD. CO. L.P.

LEASE EDDY GE STATE #3

JOHN WEST SURVEYING
HOBBS, NEW MEXICO
(505) 393-3117

LOCATION VERIFICATION MAP



SCALE: 1" = 2000'

CONTOUR INTERVAL: 10'
LAKE McMILLIAN SOUTH, N.M.

SEC. 23 TWP. 20-S RGE. 27-E

SURVEY N.M.P.M.

COUNTY EDDY

DESCRIPTION 660' FSL & 660' FWL

ELEVATION 3297'

OPERATOR DEVON ENERGY PROD. CO. L.P.

LEASE EDDY GE STATE #3

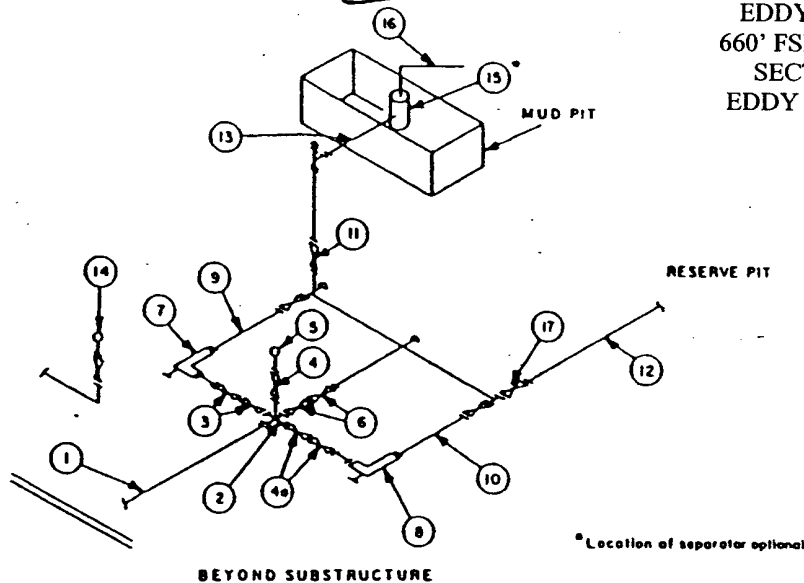
U.S.G.S. TOPOGRAPHIC MAP
LAKE McMILLIAN SOUTH, N.M.

JOHN WEST SURVEYING
HOBBS, NEW MEXICO
(505) 393-3117

MINIMUM CHOKE MANIFOLD
3,000, 5,000 and 10,000 PSI Working Pressure

3 MWP - 5 MWP - 10 MWP

DEVON LOUISIANA CORPORATION
EDDY GE STATE COM. #3
660' FSL & 660' FWL, UNIT M
SECTION 23-T20S-R27E
EDDY CNTY, NEW MEXICO



MINIMUM REQUIREMENTS										
No.		3,000 MWP			5,000 MWP			10,000 MWP		
		I.D.	NOMINAL	RATING	I.D.	NOMINAL	RATING	I.D.	NOMINAL	RATING
1	Line from drilling spool		3"	3,000		3"	5,000		3"	10,000
2	Cross 3"x3"x3"x2"			3,000			5,000			
	Cross 3"x3"x3"x3"									10,000
3	Valves(1) Gate <input type="checkbox"/> Plug <input type="checkbox"/> (2)	3-1/8"		3,000	3-1/8"		5,000	3-1/8"		10,000
4	Valve Gate <input type="checkbox"/> Plug <input type="checkbox"/> (2)	1-13/16"		3,000	1-13/16"		5,000	1-13/16"		10,000
4a	Valves(1)	2-1/16"		3,000	2-1/16"		5,000	3-1/8"		10,000
5	Pressure Gauge			3,000			5,000			10,000
6	Valves Gate <input type="checkbox"/> Plug <input type="checkbox"/> (2)	3-1/8"		3,000	3-1/8"		5,000	3-1/8"		10,000
7	Adjustable Choke(3)	2"		3,000	2"		5,000	2"		10,000
8	Adjustable Choke	1"		3,000	1"		5,000	2"		10,000
9	Line		3"	3,000		3"	5,000		3"	10,000
10	Line		2"	3,000		2"	5,000		3"	10,000
11	Valves Gate <input type="checkbox"/> Plug <input type="checkbox"/> (2)	3-1/8"		3,000	3-1/8"		5,000	3-1/8"		10,000
12	Lines		3"	1,000		3"	1,000		3"	2,000
13	Lines		3"	1,000		3"	1,000		3"	2,000
14	Remote reading compound standpipe pressure gauge			3,000			5,000			10,000
15	Gas Separator		2'x5'			2'x5'			2'x5'	
16	Line		4"	1,000		4"	1,000		4"	2,000
17	Valves Gate <input type="checkbox"/> Plug <input type="checkbox"/> (2)	3-1/8"		3,000	3-1/8"		5,000	3-1/8"		10,000

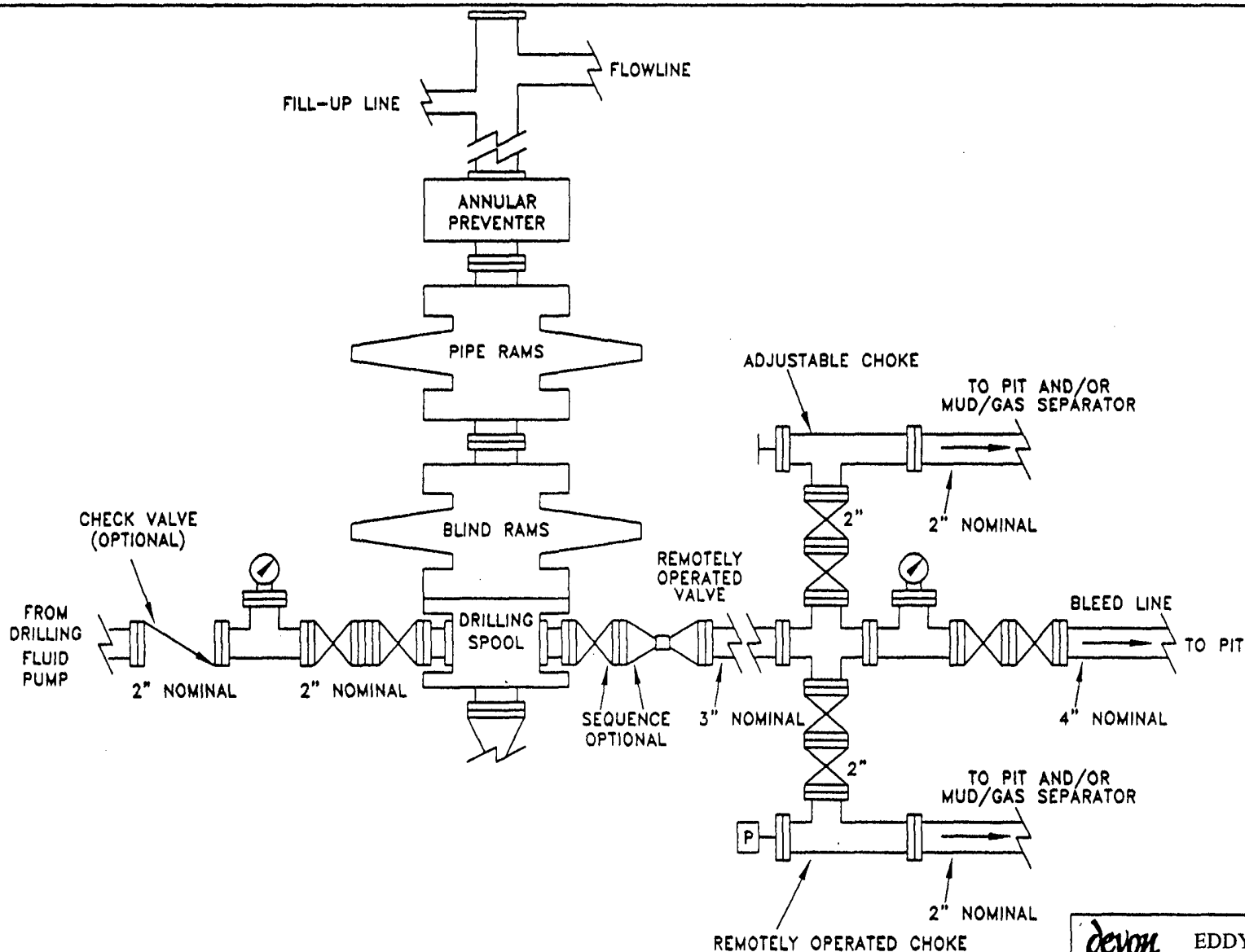
(1) Only one required in Class 3M.

(2) Gate valves only shall be used for Class 10M.

(3) Remote operated hydraulic choke required on 5,000 psi and 10,000 psi for drilling.

EQUIPMENT SPECIFICATIONS AND INSTALLATION INSTRUCTIONS

- All connections in choke manifold shall be welded, studded, flanged or Cameron clamp of comparable rating.
- All flanges shall be API 6B or 6BX and ring gaskets shall be API RX or BX. Use only BX for 10 MWP.
- All lines shall be securely anchored.
- Chokes shall be equipped with tungsten carbide seats and needles, and replacements shall be available.
- Choke manifold pressure and standpipe pressure gauges shall be available at the choke manifold to assist in regulating chokes. As an alternate with automatic chokes, a choke manifold pressure gauge shall be located on the rig floor in conjunction with the standpipe pressure gauge.
- Line from drilling spool to choke manifold should be as straight as possible. Lines downstream from chokes shall make turns by large bends or 90° bends using bull plugged tees.
- Discharge lines from chokes, choke bypass and from top of gas separator should vent as far as practical from the well.



devon

EDDY GE STATE COM. #3
660' FSL & 660' FWL, UNIT M
SECTION 23-T20S-R27E
EDDY CNTY, NEW MEXICO

SCHEMATIC
**PROPOSED 5-M BOPE
AND CHOKE ARRANGEMENT**

s:\...nm\plats
5mbope.dwg

SC

10/00



**2401 Pecos Ave
Artesia NM 88210**

Hydrogen Sulfide (H₂S) Contingency Plan

For

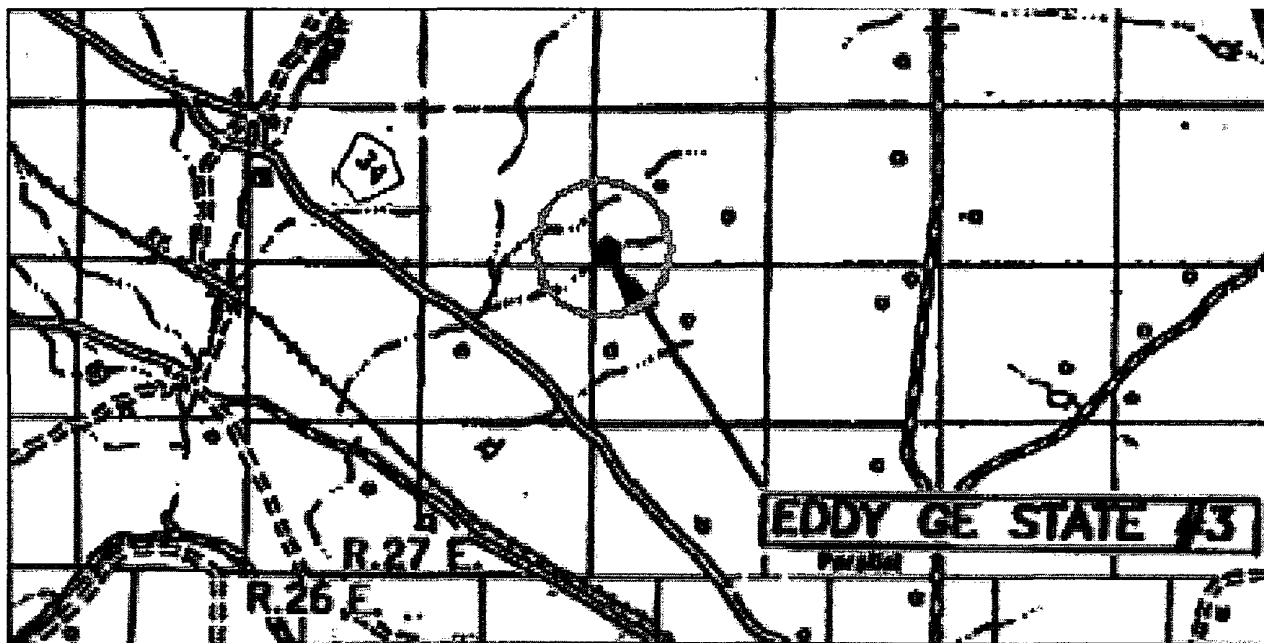
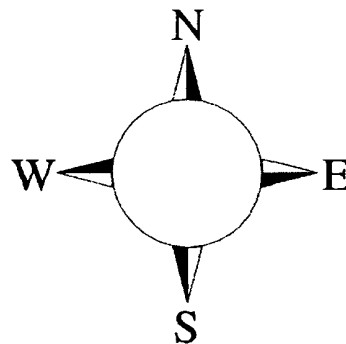
Eddy GE State #3

**660' FSL, 660' FWL
Sec-23, T-20S, R-27E**

Eddy County NM

Eddy GE State #3 Location

This is an open drilling site. H₂S monitoring equipment and emergency response equipment will be used within 500' of zones known to contain H₂S, including warning signs, wind indicators and H₂S monitor.



Assumed 100 ppm ROE = 3000'
100 ppm H₂S concentration shall trigger activation of this plan.

EDDY GE STATE COM. #3
660' FSL & 660' FWL, UNIT M
SECTION 23-T20S-R27E
EDDY CNTY, NEW MEXICO

Emergency Procedures

In the case of a release of gas containing H₂S, the first responder(s) must isolate the area and prevent entry by other persons into the 100 ppm ROE. Additionally the first responder(s) must evacuate any public places encompassed by the 100 ppm ROE. First responder(s) must take care not to injure themselves during this operation. Company and/or local officials must be contacted to aid in this operation. Evacuation of the public should be beyond the 100 ppm ROE.

All responders must have training in the detection of H₂S, measures for protection against the gas, equipment used for protection and emergency response. Additionally, responders must be equipped with H₂S monitors and air packs in order to control the release. Use the "buddy system" to ensure no injuries during the response.

Ignition of Gas Source

Should control of the well be considered lost and ignition considered, take care to protect against exposure to Sulfur Dioxide (SO₂). Intentional ignition must be coordinated with the NMOCD and local officials. Additionally the NM State Police may become involved. NM State Police shall be the Incident Command on scene of any major release. Take care to protect downwind whenever there is an ignition of the gas

Characteristics of H₂S and SO₂

Common Name	Chemical Formula	Specific Gravity	Threshold Limit	Hazardous Limit	Lethal Concentration
Hydrogen Sulfide	H ₂ S	1.189 Air = 1	10 ppm	100 ppm/hr	600 ppm
Sulfur Dioxide	SO ₂	2.21 Air = 1	2 ppm	N/A	1000 ppm

Contacting Authorities

Devon Energy Corp. personnel must liaison with local and state agencies to ensure a proper response to a major release. Additionally, the OCD must be notified of the release as soon as possible but no later than 4 hours. Agencies will ask for information such as type and volume of release, wind direction, location of release, etc. Be prepared with all information available. The following call list of essential and potential responders has been prepared for use during a release. Devon Energy Corp. Company response must be in coordination with the State of New Mexico's 'Hazardous Materials Emergency Response Plan' (HMER)

EDDY GE STATE COM. #3
660' FSL & 660' FWL, UNIT M
SECTION 23-T20S-R27E
EDDY CNTY, NEW MEXICO

Devon Energy Corp. Company Call List

<u>Artesia (505)</u>	<u>Cellular</u>	<u>Office</u>	<u>Home</u>
Foreman – BJ Cathey.....	390-5893	748-0176	887-6026
Asst. Foreman – Bobby Jones	748-7447	748-0176	746-3194
Cecil Thurmond	748-7180	748-0171	887-1479
David Purdy	(432)631-2969.....	(432)495-7279	(432)683-0735
Engineer – Tom Pepper	(405) 203-2242.....	(405) 552-4513 ...	(405) 728-8641

Agency Call List

Eddy County (505)

Artesia

State Police	746-2703
City Police	746-2703
Sheriff's Office	746-9888
Ambulance	911
Fire Department	746-2701
LEPC (Local Emergency Planning Committee)	746-2122
NMOCD	748-1283

Carlsbad

State Police	885-3137
City Police	885-2111
Sheriff's Office	887-7551
Ambulance	911
Fire Department	885-2111
LEPC (Local Emergency Planning Committee)	887-3798
US Bureau of Land Management	887-6544

New Mexico Emergency Response Commission (Santa Fe)	(505)476-9600
24 HR	(505) 827-9126
National Emergency Response Center (Washington, DC)(800) 424-8802

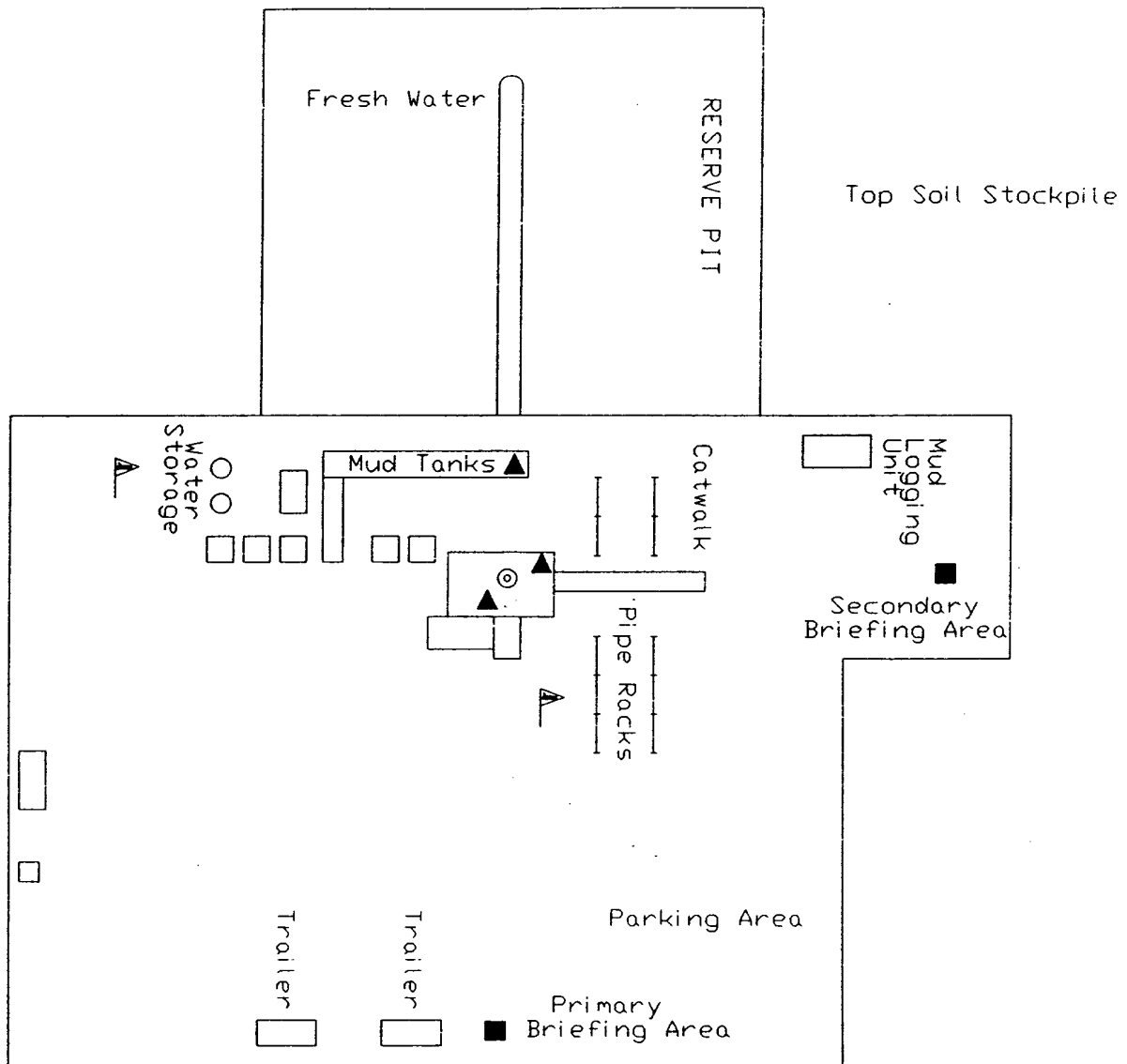
Other

Boots & Coots IWC	1-800-256-9688 or (281) 931-8884
Cudd Pressure Control.....	(915) 699-0139 or (915) 563-3356
Halliburton	(505) 746-2757
B. J. Services.....	(505) 746-3569

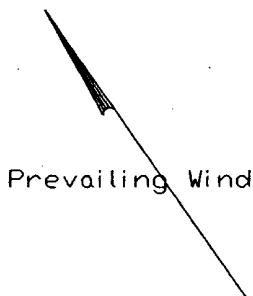
Flight For Life -4000 24th St, Lubbock, TX	(806) 743-9911
Aerocare -Rr 3 Box 49f, Lubbock, TX	(806) 747-8923
Med Flight Air Amb 2301 Yale Blvd SE #D3, Albuq, NM	(505) 842-4433
S B Air Med Svc 2505 Clark Carr Loop SE, Albuq, NM	(505) 842-4949

Prepared in conjunction with
Wade Rohloff of;





- ▲ H2S MONITORS WITH ALARMS AT THE BELL NIPPLE, SUBSTRUCTURE, AND SHALE SHAKER
- ▲ WIND DIRECTION INDICATORS
- SAFE BRIEFING AREAS WITH CAUTION SIGNS AND PROTECTIVE BREATHING EQUIPMENT



File: O:\NM\H2S-PLAN

devon EDDY GE STATE COM. #3
 660' FSL & 660' FWL, UNIT M
 SECTION 23-T20S-R27E
 EDDY CNTY, NEW MEXICO

H2S PLAN

Scale in Feet

25 0 25 50 75 100

4/97