

Submit To Appropriate District Office  
State Lease - 6 copies  
Fee Lease - 5 copies  
District I  
1625 N. French Dr., Hobbs, NM 88240  
District II  
1301 W. Grand Avenue, Artesia, NM 88210  
District III  
1000 Rio Brazos Rd., Aztec, NM 87410  
District IV  
1220 S. St. Francis Dr., Santa Fe, NM 87505

State of New Mexico  
Energy, Minerals and Natural Resources

Oil Conservation Division  
1220 South St. Francis Dr.  
Santa Fe, NM 87505

Form C-105  
Revised June 10, 2003

WELL API NO.  
30-015-35444

5. Indicate Type of Lease  
STATE ☐ FEE ☒

State Oil & Gas Lease No.

WELL COMPLETION OR RECOMPLETION REPORT AND LOG

1a. Type of Well:  
OIL WELL ☐ GAS WELL ☒ DRY ☐ OTHER \_\_\_\_\_  
b. Type of Completion:  
NEW ☒ WORK ☐ DEEPEN ☐ PLUG ☐ DIFF. ☐  
WELL OVER BACK RESVR. ☐ OTHER

7. Lease Name or Unit Agreement Name

Lake McMillan "21"

2. Name of Operator  
Western Reserves Oil Co. Inc.

8. Well No.

1

3. Address of Operator  
P. O. Box 993, Midland, TX 79702

9. Pool name or Wildcat

Four Mile Draw; Morrow (Gas)

4. Well Location

Unit Letter C : 660 Feet From The North Line and 1980 Feet From The West Line

Section 21 Township 19 South Range 26 East NMPM Eddy County

10. Date Spudded 4-07-07 11. Date T.D. Reached 5-08-07 12. Date Compl. (Ready to Prod.) 6-02-07 13. Elevations (DF& RKB RT, GR, etc.) 3343' GL, 3358' KB 14. Elev. Casinghead

15. Total Depth 9742' 16. Plug Back T.D. 9668' 17. If Multiple Compl. How Many Zones? 18. Intervals Drilled By 40' - 9742' 19. Producing Interval(s), of this completion - Top, Bottom, Name 9444' - 9474', MORROW 20. Was Directional Survey Made No

21. Type Electric and Other Logs Run GR-CNL-LDT-DLL-MSFL 22. Was Well Cored No

23. CASING RECORD (Report all strings set in well)

CASING SIZE	WEIGHT LB/FT.	DEPTH SET	HOLE SIZE	CEMENTING RECORD	AMOUNT PULLED
13 3/8"	48	359'	17 1/2"	490 sks	Circ
9 5/8"	36	1390'	12 1/4"	625 sks	Circ
5 1/2"	17	9742'	8 3/4"	1495 sks	TOC @ 1030' (CBL)

24. LINER RECORD				25. TUBING RECORD		
SIZE	TOP	BOTTOM	SACKS CEMENT	SCREEN	SIZE	DEPTH SET
					2 7/8"	9385'
						9387'

26. Perforation record (interval, size, and number)  
9444' - 9474', 30' @ 4 SPF, 120 holes  
(25 gm, .42" EHD)

27. ACID, SHOT, FRACTURE, CEMENT, SQUEEZE, ETC.  
DEPTH INTERVAL 9444' - 9474' AMOUNT AND KIND MATERIAL USED Natural


28. PRODUCTION

Date First Production		Production Method (Flowing, gas lift, pumping - Size and type pump)			Well Status (Prod. or Shut-in)		
6-02-07		Flowing			SIWOPL		
Date of Test	Hours Tested	Choke Size	Prod'n For Test Period	Oil - Bbl	Gas - MCF	Water - Bbl.	Gas - Oil Ratio
6-03-07	24	12/64"		16	2297	0	143563:1
Flow Tubing Press.	Casing Pressure	Calculated 24-Hour Rate	Oil - Bbl.	Gas - MCF	Water - Bbl.	Oil Gravity - API - (Corr.)	
3050 psi	Packer		16	2297	0	54.5 @ 60 deg F	

29. Disposition of Gas (Sold, used for fuel, vented, etc.) To be sold via Agave Energy Test Witnessed By Sammy Williams

30. List Attachments  
OH Logs, Deviation Survey, Amended C-102

31. I hereby certify that the information shown on both sides of this form as true and complete to the best of my knowledge and belief

Signature  Printed Name Chris Renaud Title Engineer/Agent Date 6-21-07  
E-mail Address renail@aol.com

DISTRICT I  
1625 N. FRENCH DR., ROBBS, NM 88240

DISTRICT II  
1301 W. GRAND AVENUE, ARTESIA, NM 88210

DISTRICT III  
1000 Rio Brazos Rd., Aztec, NM 87410

DISTRICT IV  
1220 S. ST. FRANCIS DR., SANTA FE, NM 87505

State of New Mexico  
Energy, Minerals and Natural Resources Department

OIL CONSERVATION DIVISION  
1220 SOUTH ST. FRANCIS DR.  
Santa Fe, New Mexico 87505

Form C-102  
Revised October 12, 2005  
Submit to Appropriate District Office  
State Lease - 4 Copies  
Fee Lease - 3 Copies

WELL LOCATION AND ACREAGE DEDICATION PLAT

~~XX~~ AMENDED REPORT

API Number 30-015-35444	Pool Code 76960	Pool Name Four Mile Draw; Morrow (Gas)
Property Code 36339	Property Name LAKE McMILLAN 21	Well Number 1
OGRID No. 24987	Operator Name WESTERN RESERVES OIL COMPANY INC.	Elevation 3343' GL

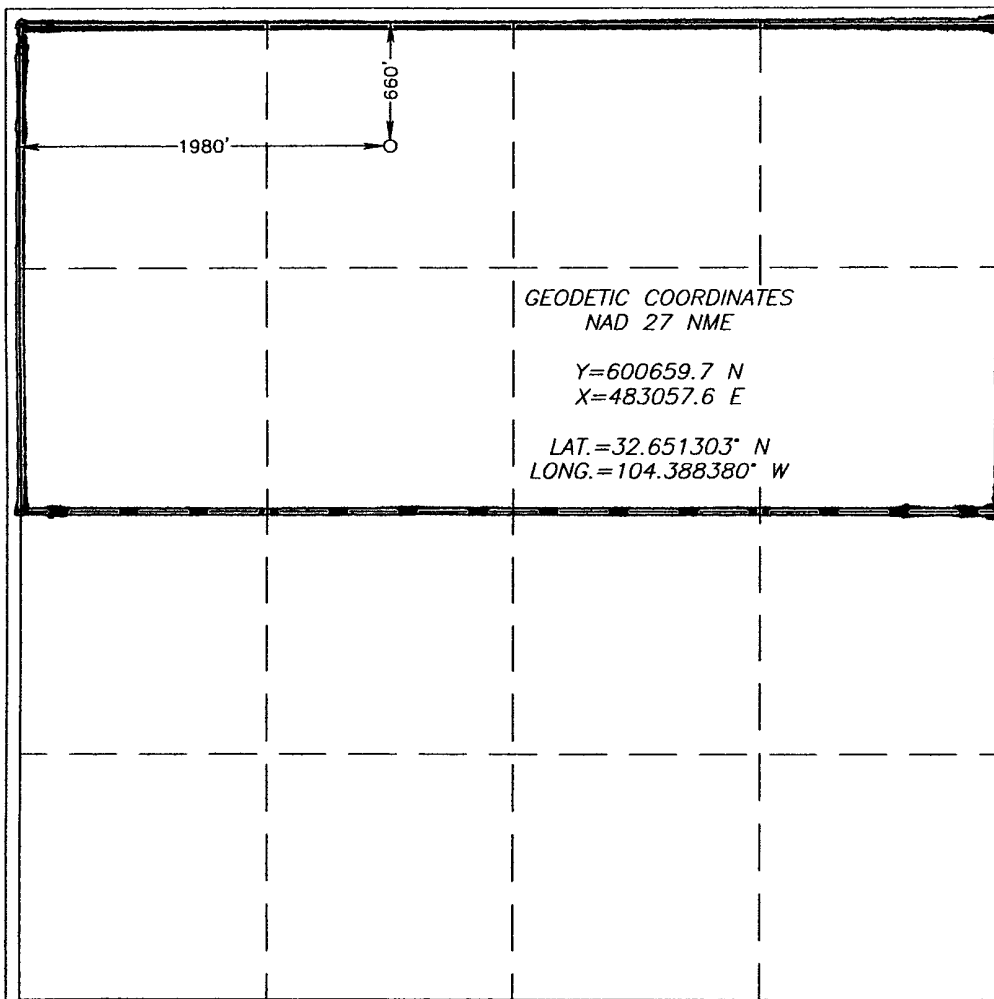
Surface Location

UL or lot No.	Section	Township	Range	Lot Idn	Feet from the	North/South line	Feet from the	East/West line	County
C	21	19-S	26-E		660	NORTH	1980	WEST	EDDY

Bottom Hole Location If Different From Surface

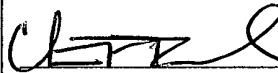
UL or lot No.	Section	Township	Range	Lot Idn	Feet from the	North/South line	Feet from the	East/West line	County
Dedicated Acres	Joint or Infill	Consolidation Code	Order No.						

NO ALLOWABLE WILL BE ASSIGNED TO THIS COMPLETION UNTIL ALL INTERESTS HAVE BEEN CONSOLIDATED  
OR A NON-STANDARD UNIT HAS BEEN APPROVED BY THE DIVISION



OPERATOR CERTIFICATION

I hereby certify that the information herein is true and complete to the best of my knowledge and belief, and that this organization either owns a working interest or unleased mineral interest in the land including the proposed bottom hole location or has a right to drill this well at this location pursuant to a contract with an owner of such mineral or working interest, or to a voluntary pooling agreement or a compulsory pooling order heretofore entered by the division.


  
Signature Date 6-21-07  
Christopher P. Renaud  
Printed Name

SURVEYOR CERTIFICATION

I hereby certify that the well location shown on this plat was plotted from field notes of actual surveys made by me or under my supervision, and that the same is true and correct to the best of my belief.

FEBRUARY 06, 2007

Date Surveyed LA  
Signature & Seal of DSON  
Professional Surveyor

  
Certificate No. GARY EIDSON 12841