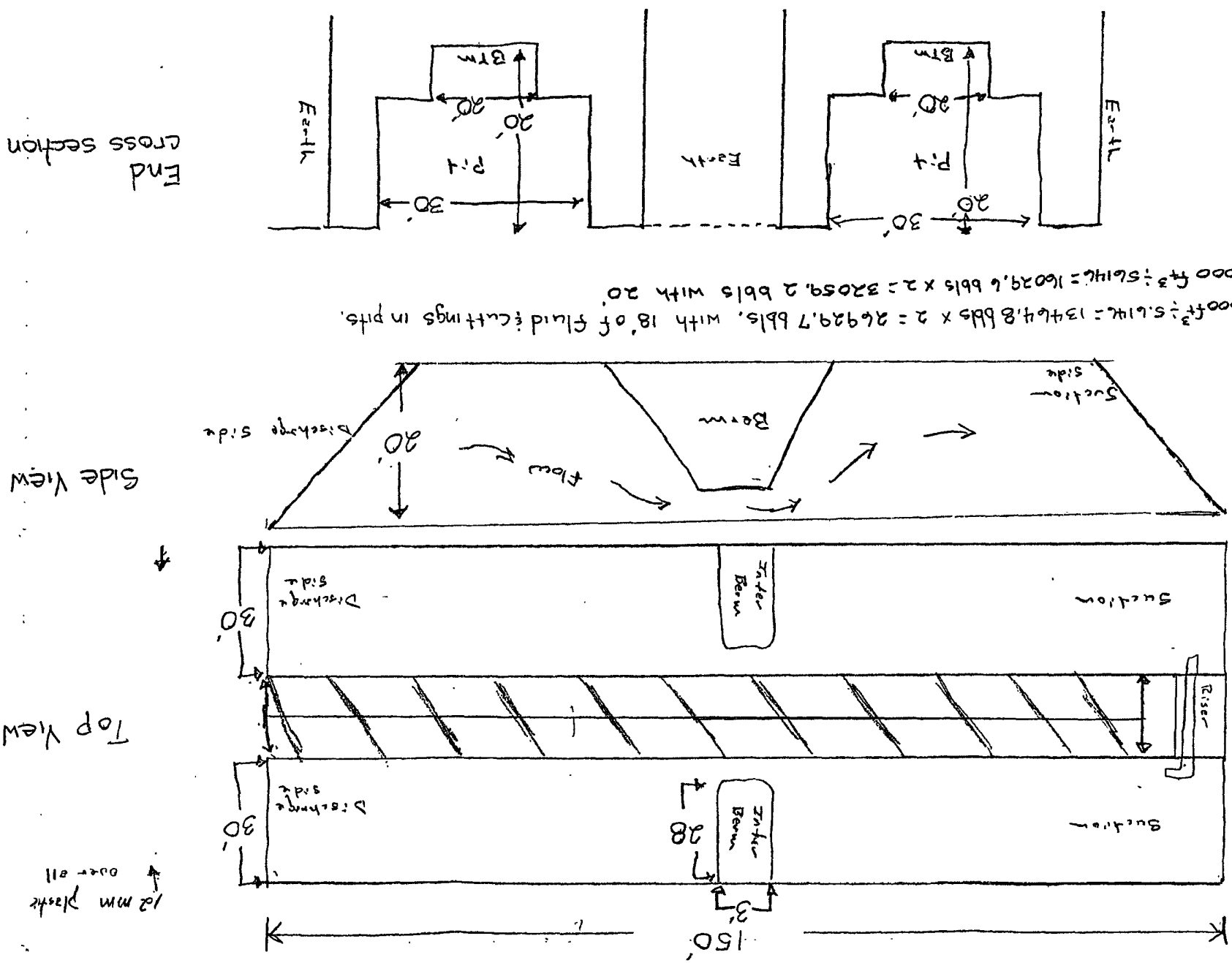




# Chesapeake Energy Double Pit Guideline 3A



$18' \times 30' \times 140' = 75600 \text{ ft}^3 \div 5.614 = 13464.8 \text{ bbls} \times 2 = 26929.7 \text{ bbls}$ , with 18' of fluid cuttings in pits.  
 $20' \times 30' \times 140' = 90000 \text{ ft}^3 \div 5.614 = 16029.6 \text{ bbls} \times 2 = 32059.2 \text{ bbls}$  with 20'