



(432) 686-3642 Office  
(432) 770-0602 Cell  
Donny\_Glanton@eogresources.com



**EOG Resources, Inc.**  
P.O. Box 2267  
Midland, TX 79702  
(432) 686-3600

30-015-35709

July 18, 2007

JUL 19 2007  
OCD-ARTESIA

OCD-Artesia  
Att: Mr. Bryan Arrent  
1301 W. Grand Avenue  
Artesia, NM 88210

**Re: Lobo State 1**  
**API: 30-015-35709**

Dear Mr. Arrent:

Please find the following additional information submitted for your processing.

- Well Plat
- Detailed Casing
- Mud
- Cement

The H<sub>2</sub>S plan will be mailed to your office in a separate mailing.

Should you have any additional questions, please feel to give me a call.

Thanks and best regards.

Very truly yours,

A handwritten signature in black ink, appearing to read "Donny G. Glanton".

Donny G. Glanton  
Sr. ROW Lease Operations Representative

District I  
1625 N. French Dr., Hobbs, NM 88240  
District II  
1301 W. Grand Avenue, Artesia, NM 88210  
District III  
1000 Rio Brazas Rd., Aztec, NM 87410  
District IV  
1220 S. St. Francis Dr., Santa Fe, NM 87505

State of New Mexico  
Energy, Minerals & Natural Resources Department  
OIL CONSERVATION DIVISION  
1220 South St. Francis Dr.  
Santa Fe, NM 87505

Form C-102  
Revised October 12, 2005  
Submit to Appropriate District Office  
State Lease- 4 Copies  
Fee Lease- 3 Copies

JUL 19 2007  
OCD-ARTESIA

☐ AMENDED REPORT

WELL LOCATION AND ACREAGE DEDICATION PLAT

API Number <b>30-015-35709</b>	Pool Code	Pool Name <b>Undesignated Sand Tank; Bone Springs</b>
Property Code	Property Name <b>LOBO STATE</b>	Well Number <b>1</b>
OGRID No. <b>7377</b>	Operator Name <b>EOG RESOURCES, INC.</b>	Elevation <b>3516'</b>

Surface Location

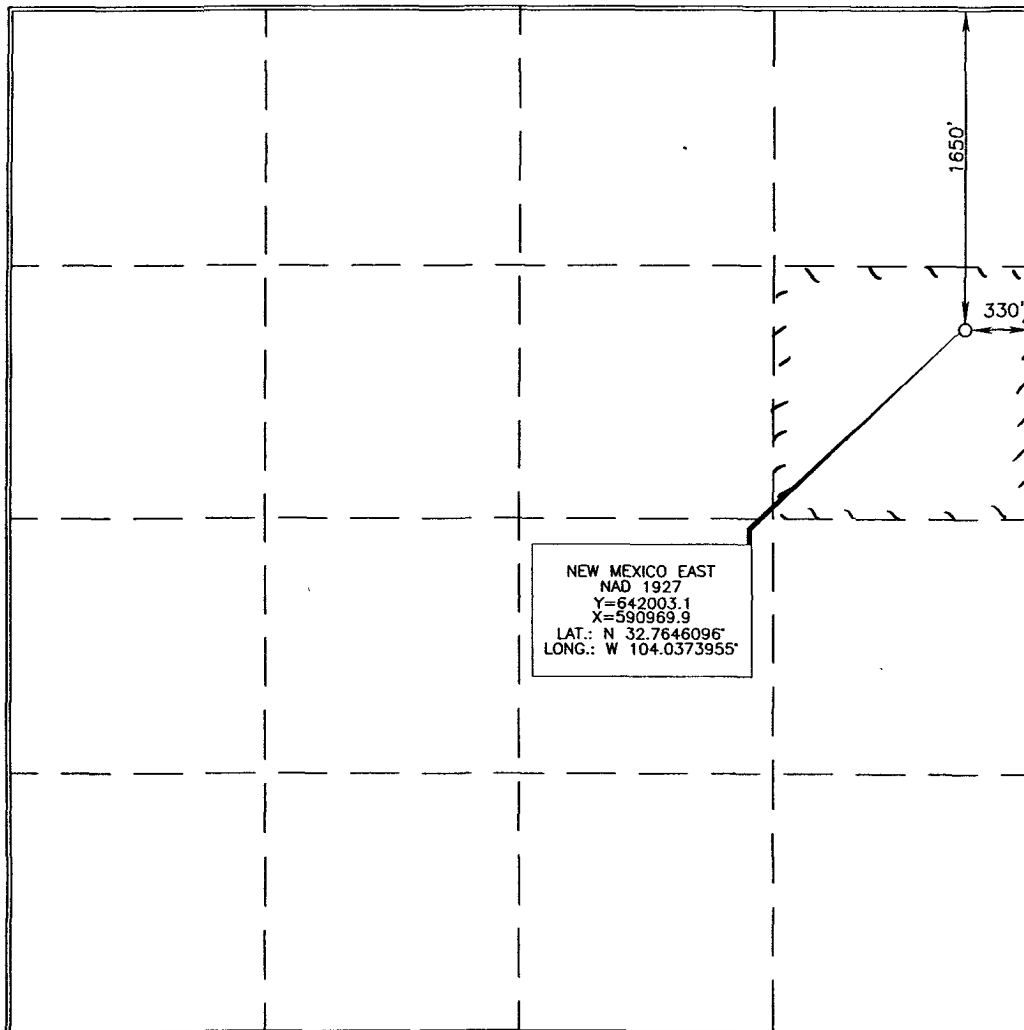
UL or lot no.	Section	Township	Range	Lot Idn	Feet from the	North/South line	Feet from the	East/West line	County
<b>H</b>	<b>11</b>	<b>18 SOUTH</b>	<b>29 EAST, N.M.P.M.</b>		<b>1650'</b>	<b>NORTH</b>	<b>330'</b>	<b>EAST</b>	<b>EDDY</b>

Bottom Hole Location If Different From Surface

UL or lot no.	Section	Township	Range	Lot Idn	Feet from the	North/South line	Feet from the	East/West line	County

Dedicated Acres <b>40</b>	Joint or Infill	Consolidation Code	Order No.
------------------------------	-----------------	--------------------	-----------

No allowable will be assigned to this completion until all interests have been consolidated or a non-standard unit has been approved by the division.



OPERATOR CERTIFICATION

I hereby certify that the information contained herein is true and complete to the best of my knowledge and belief, and that this organization either owns a working interest or unleased mineral interest in the land including the proposed bottom hole location or has a right to drill this well at this location pursuant to a contract with an owner of such a mineral or working interest, or to a voluntary pooling agreement or a compulsory pooling order heretofore entered by the division.

*Don D. With* 7/9/2007  
Signature Date

**Donny G. Glatton**  
Printed Name

SURVEYOR CERTIFICATION

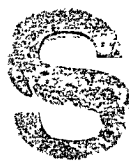
I hereby certify that the well location shown on this plat was plotted from field notes of actual surveys made by me or under my supervision and that the same is true and correct to the best of my belief.

JUNE 15 2007  
Date of Survey

Signature and Seal of Professional Surveyor

*Terry J. Ouel* 7/2/2007  
Certificate Number 15079

WO# 070625WL (JL)

**Permit Information:****Well Name:** Lobo State #1
 .III 19 2007  
**OCD-ARTESIA**
**Location:**

SL 1650' FNL & 330' FEL, Section 11, T-18-S, R-29-E, Eddy Co., N.M.  
 BHL Same.

**Casing Program:**

Casing	Setting Depth	Hole Size	Casing Size	Casing Weight	Casing Grade	Desired TOC
Surface	450'	14-3/4"	11-3/4"	42#	H-40	Surface
Intermediate	3,200'	11"	8-5/8"	32#	J-55	Surface
Production	7,500'	7-7/8"	5-1/2"	17#	L-80	3000'

**Cement Program:**

Depth	No. Sacks	Slurries
500'	100	Lead: 10:2 RFC Class A + 5 pps D24 + 1/8 pps D130 (14.2 ppg / 2.26 yld)
	300	Tail: Class C + 2% CaCl <sub>2</sub> (14.8 ppg / 1.34 yld)
3,200'	650	Lead: 50:50 Poz:C + 5% Salt + 1/8 pps D130 (11.9ppg / 2.47 yld)
	225	Tail: Class C + 1/8 pps D130 (14.8 ppg / 1.33 yld)
7,500'	400	Lead: 50:50 Poz:H + additives (11.9 ppg / 2.39 yld)
	200	Tail: TXI Lightweight + 1.3% Salt + 1.5 gps D600G + 2% D174 (13.0 ppg / 1.44 yld)

**Mud Program:**

Depth	Type	Weight (ppg)	Viscosity	Water Loss
0 – 500'	Fresh - Gel	8.4 – 9.0	28-34	N/c
500' – 3,200'	Brine	9.8 – 10.2	28-30	N/c
3,200' - 6,800'	Fresh Water	8.4 – 8.6	28-30	N/c
6,800' – 7,500'	Fresh Water - Polymer	8.4 - 8.6	35-40	<15