

OCD-ARTESIA

UNITED STATES
DEPARTMENT OF THE INTERIOR
BUREAU OF LAND MANAGEMENT

SUBMIT IN DUPLICATE*

(See other in-
struction on
reverse side)

FOR APPROVED
OMB NO 1004-0137
Expires December 31, 1991

5 LEASE DESIGNATION AND SERIAL NO
NM-98170

WELL COMPLETION OR RECOMPLETION REPORT AND LOG*

6 IF INDIAN, ALLOTTEE OR TRIBE NAME

1a TYPE OF WELL: OIL WELL ☒ GAS WELL ☐ DRY ☐ Other _____

7. UNIT AGREEMENT NAME

b. TYPE OF COMPLETION:
NEW WELL ☒ WORK OVER ☐ DEEPEN ☐ PLUG BACK ☐ DIFF RESVR ☐ Other _____

8. FARM OR LEASE NAME, WELL NO.

Colts Federal #1

2 NAME OF OPERATOR

Mack Energy Corporation

OCD-ARTESIA

9. API WELL NO.

30-015-35410

3. ADDRESS AND TELEPHONE NO.

P.O. Box 960, Artesia, NM 88211-0960

(505) 748-1288

10. FIELD AND POOL, OR WILDCAT

Wildcat San Andres

4. LOCATION OF WELL (Report location clearly and in accordance with any State requirements)*

At surface

2971 FSL & 330 FEL

At top prod interval reported below

At total depth

11 SEC., T., R., M., OR BLOCK AND SURVEY OR AREA

Sec. 5 T16S R29E

14 PERMIT NO.

DATE ISSUED

12. COUNTY OR PARISH
Eddy

13 STATE
NM

15 DATE SPUDDED

2/10/07

16. DATE T.D. REACHED

3/5/07

17. DATE COMPL. (Ready to prod.)

4/26/07

18. ELEVATIONS (DF, RKB, RT, GR, ETC.)

3723' RKB

19. ELEV CASING HEAD

3707' GR

20 TOTAL DEPTH, MD & TVD

8100

21 PLUG, BACK T.D., MD & TVD

3770

22. IF MULTIPLE COMPL., HOW MANY*

23. INTERVALS DRILLED BY

ROTARY TOOLS

Yes

CABLE TOOLS

24. PRODUCING INTERVAL (S), OF THIS COMPLETION - TOP, BOTTOM, NAME (MD AND TVD)*

2783.5-3064.5', San Andres

25. WAS DIRECTIONAL SURVEY MADE

Yes

26. TYPE ELECTRIC AND OTHER LOGS RUN

Gamma Ray, Neutron, Density, Lateralog, Spectral Gamma Ray

27. WAS WELL CORED

No

28 CASING RECORD (Report all strings set in well)

CASING SIZE/GRADE	WEIGHT, LB./FT	DEPTH SET (MD)	HOLE SIZE	TOP OF CEMENT, CEMENTING RECORD	AMOUNT PULLED
13 3/8, H-40	48	202	17 1/2	400sx	None
8 5/8, J-55	24	1491	12 1/4	700sx	None
5 1/2, L-80	17	8003	7 7/8	1740sx	None

29 LINER RECORD

SIZE	T O P (MD)	BOTTOM (MD)	SACKS CEMENT	SCREEN (MD)	SIZE	DEPTH SET (MD)	PACKER SET (MD)
					2 7/8	3084	

30. TUBING RECORD

31. PERFORATION RECORD (Interval, size and number)

2783.5-3064.5', .41, 70

32. ACID, SHOT, FRACTURE, CEMENT SQUEEZE, ETC

DEPTH INTERVAL (MD)	AMOUNT AND KIND OF MATERIAL USED
2783.5-3064.5'	2500 gals 15% NE
2783.5-3064.5'	8183# LiteProp, 91,582# 16/30 sand
2783.5-3064.5'	93,000 gals 40# gel

33 PRODUCTION

DATE FIRST PRODUCTION
5/16/07

PRODUCTION METHOD (Flowing, gas lift, pumping - size and type of pump)

2 1/2 x 2 x 12' pump

DATE OF TEST
7/1/07

HOURS TESTED
24 hours

CHOKE SIZE

PROD'N FOR TEST PERIOD

OIL-BBL.

25

GAS-MCF.

22

WELL STATUS (Producing or shut-in)

Producing

WATER-BBL.

180

GAS-OIL RATIO

800

FLOW. TUBING PRESS.

CASING PRESSURE

CALCULATED 24-HOUR RATE

OIL-BBL.

25

GAS-MCF.

22

WATER - BBL.

180

OIL GRAVITY (API CORR)

API

62

34. DISPOSITION OF GAS (Sold, used for fuel, vented, etc.)

Sold

35 LIST OF ATTACHMENTS

Deviation Survey and Logs

36. I hereby certify that the foregoing and attached information is complete and correct as determined from all available records

SIGNED

Jerry W. Sherell

TITLE

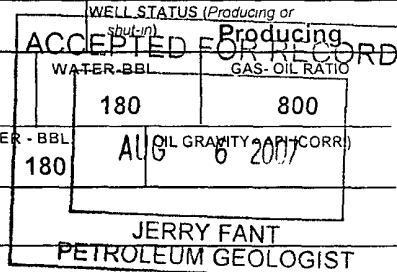
Production Clerk

DATE

7/3/07

*(See Instructions and spaces for Additional Data on Reverse Side)

Title 18 U.S.C. Section 1001, makes it a crime for any person knowingly and willfully to make to any department or agency of the United States any false, fictitious or fraudulent statements or representations as to any matter within its jurisdiction.

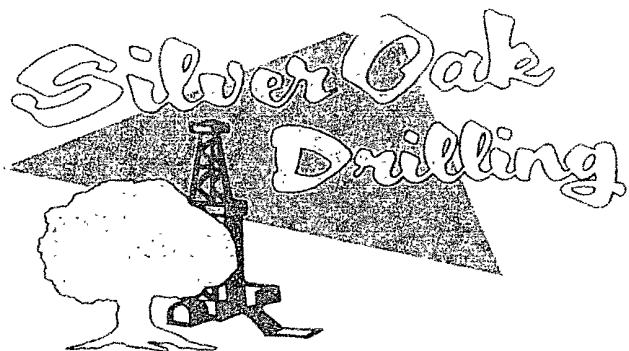


37 SUMMARY OF POROUS ZONES- (Show all important zones of porosity and contents thereof, cored intervals, and all drill-stem, tests, including depth interval tested, cushion used, time tool open, flowing and shut-in pressures, and recoveries)

38

GEOLOGIC MARKERS

FORMATION	TOP	BOTTOM	DESCRIPTION, CONTENTS, ETC	NAME	TOP	
					MEAS DEPTH	TRUE VERT DEPTH
Wildcat San Andres	2783.5	3064.5		Yates	750	
				Seven Rivers	1032	
				Queen	1690	
				San Andres	2298	
				Glorietta	3824	
				Tubb	5020	
				Abo	5720	
				Wolfcamp	7140	



PO Box 1370
Artesia, NM 88211-1370
(505) 748-1288

March 13, 2007

Mack Energy Corporation
PO Box 960
Artesia, NM 88211-0960

RE: Colts Federal #1
2971' FSL & 330' FEL
Sec. 5, T16S, R29E
Eddy County, New Mexico

Dear Sir,

The following is the Deviation Survey for the above captioned well.

DEPTH	DEVIATION	DEPTH	DEVIATION
205'	0.00°	4600'	0.75°
350'	0.75°	4941'	0.75°
637'	0.75°	5299'	0.75°
847'	0.75°	5600'	0.25°
1229'	0.50°	5926'	1.50°
1670'	0.50°	6243'	2.25°
1970'	0.75°	6529'	3.50°
2270'	0.75°	6830'	4.00°
2559'	0.75°	6910'	3.50°
2900'	0.50°	7071'	2.75°
3200'	0.50°	7198'	2.75°
3682'	0.75°	7547'	1.00°
3982'	0.75°	7896'	1.25°
4275'	0.75°		

Very truly yours,

Eddie C. LaRue
Operations Manager

State of New Mexico }
County of Eddy }

The foregoing was acknowledged before me this 13th day of March, 2007.

Notary Public

