

Submit 3 Copies To Appropriate District Office  
District I  
1625 N French Dr., Hobbs, NM 88240  
District II  
1301 W Grand Ave., Artesia, NM 88210  
District III  
1000 Rio Brazos Rd., Aztec, NM 87410  
District IV  
1220 S St Francis Dr., Santa Fe, NM 87505

State of New Mexico  
Energy, Minerals and Natural Resources

Form C-103

May 27, 2004

OIL CONSERVATION DIVISION  
1220 South St. Francis Dr.  
Santa Fe, NM 87505

WELL API NO.

30-015-35559

5. Indicate Type of Lease

STATE ☒ FEE ☐

6. State Oil & Gas Lease No.

7. Lease Name or Unit Agreement Name

Homer State Com

8. Well Number

001

9. OGRID Number

162683

10. Pool name or Wildcat

Chosa Draw; Morrow (Gas)

SUNDRY NOTICES AND REPORTS ON WELLS

(DO NOT USE THIS FORM FOR PROPOSALS TO DRILL OR TO DEEPEN OR PLUG BACK TO A DIFFERENT RESERVOIR USE "APPLICATION FOR PERMIT" (FORM C-101) FOR SUCH PROPOSALS)

1. Type of Well: Oil Well ☐ Gas Well ☒ Other ☐

2. Name of Operator

Cimarex Energy Co. of Colorado

AUG 23 2007

3. Address of Operator

PO Box 140907; Irving, TX 75014-0907

OCD-ARTESIA

4. Well Location

SHL Unit Letter C : 660 feet from the North line and 1980 feet from the West line

Section 2 Township 25S Range 25E NMPM          County Eddy

11. Elevation (Show whether DR, RKB, RT, GR, etc.)

3601' GR

Pit or Below-grade Tank Application ☐ or Closure ☐

Pit type          Depth to Groundwater          Distance from nearest fresh water well          Distance from nearest surface water         

Pit Liner Thickness:          Below-Grade Tank: Volume          bbls; Construction Material         

12. Check Appropriate Box to Indicate Nature of Notice, Report or Other Data

NOTICE OF INTENTION TO:

PERFORM REMEDIAL WORK ☐

PLUG AND ABANDON ☐

TEMPORARILY ABANDON ☐

CHANGE PLANS ☐

PULL OR ALTER CASING ☐

MULTIPLE COMPL ☒

OTHER:         

DHC ☒

SUBSEQUENT REPORT OF:

REMEDIAL WORK ☐

ALTERING CASING ☐

COMMENCE DRILLING OPNS ☐

P AND A ☐

CASING/CEMENT JOB Prod ☐

OTHER:         

13. Describe proposed or completed operations. (Clearly state all pertinent details, and give pertinent dates, including estimated date of starting any proposed work). SEE RULE 1103. For Multiple Completions: Attach wellbore diagram of proposed completion or recompletion.

The Homer State Com 1 reached TD of 11900' on 08-17-07. Logs show potential pay areas in both the Atoka and Morrow zones.

Cimarex intends to perf and break down Morrow 11370'-11384' and perf Morrow 11304'-11330.' Then frac 11304'-11384' as needed. Obtain flow test from Morrow. Set CBP @ 11000' w/ 10' cmt.

TIH with TCP assembly to perf Atoka 10796'-10808.' Flow test Atoka. Frac and flowback Atoka as needed.

Drill out CBP @ 11000' and c/o to PBTD. Turn to sales.

Please see attached completion procedure and C-102s for each zone. DHC application in progress.

I hereby certify that the information above is true and complete to the best of my knowledge and belief. I further certify that any pit or below-grade tank has been/will be constructed or closed according to NMOCD guidelines ☐, a general permit ☐ or an (attached) alternative OCD-approved plan ☐.

SIGNATURE Natalie Krueger TITLE Reg Analyst DATE August 22, 2007

Type or print name Natalie Krueger email address: nkrueger@cimarex.com Telephone No. 469-420-2723

For State Use Only

APPROVED BY:          TITLE          DATE 8/24/07

Conditions of Approval (if any):

Accepted for record - NMOCD

DISTRICT I  
1625 N. French Dr., Hobbs, NM 88240

DISTRICT II  
1301 W. Grand Avenue, Artesia, NM 88210

DISTRICT III  
1000 Rio Brazos Rd., Asteo, NM 87410

DISTRICT IV  
1220 S. St. Francis Dr., Santa Fe, NM 87505

State of New Mexico  
Energy, Minerals and Natural Resources Department

Form C-102  
Revised October 12, 2005

Submit to Appropriate District Office

State Lease - 4 Copies  
Fee Lease - 3 Copies

OIL CONSERVATION DIVISION  
1220 South St. Francis Dr.  
Santa Fe, New Mexico 87505

☐ AMENDED REPORT

WELL LOCATION AND ACREAGE DEDICATION PLAT

API Number 30-015-35559	Pool Code	Pool Name Chosa Draw; Morrow (Gas)
Property Code	Property Name HOMER STATE COM	Well Number 1
OGRID No. 162683	Operator Name CIMAREX ENERGY CO. OF COLORADO	Elevation 3601'

Surface Location

UL or lot No.	Section	Township	Range	Lot Idn	Feet from the	North/South line	Feet from the	East/West line	County
C	2	25 S	25 E		660	NORTH	1980	WEST	EDDY

Bottom Hole Location If Different From Surface

UL or lot No.	Section	Township	Range	Lot Idn	Feet from the	North/South line	Feet from the	East/West line	County

Dedicated Acres 320	Joint or Infill	Consolidation Code P	Order No. DHC Pending
------------------------	-----------------	-------------------------	--------------------------

NO ALLOWABLE WILL BE ASSIGNED TO THIS COMPLETION UNTIL ALL INTERESTS HAVE BEEN CONSOLIDATED  
OR A NON-STANDARD UNIT HAS BEEN APPROVED BY THE DIVISION

	<p><b>OPERATOR CERTIFICATION</b></p> <p>I hereby certify that the information contained herein is true and complete to the best of my knowledge and belief, and that this organization either owns a working interest or unleased mineral interest in the land including the proposed bottom hole location pursuant to a contract with an owner of such a mineral or working interest, or to a voluntary pooling agreement or a compulsory pooling order heretofore entered by the division.</p> <p><i>Zeno Farris</i> 08-22-07 Signature Date</p> <p>Zeno Farris Printed Name</p>
	<p><b>SURVEYOR CERTIFICATION</b></p> <p>I hereby certify that the well location shown on this plat was plotted from field notes of actual surveys made by me or under my supervision, and that the same is true and correct to the best of my belief.</p> <p>MARCH 29 2007</p> <p>Date Surveyed Signature of Gary L. Jones Professional Surveyor</p>
	<p>Certificate No. Gary L. Jones 7977</p>
	<p>BASIN SURVEYS</p>

DISTRICT I  
1625 N. French Dr., Hobbs, NM 88240

DISTRICT II  
1301 W. Grand Avenue, Artesia, NM 88210

DISTRICT III  
1000 Rio Brazos Rd., Astea, NM 87410

DISTRICT IV  
1220 S. St. Francis Dr., Santa Fe, NM 87506

State of New Mexico  
Energy, Minerals and Natural Resources Department

Form C-102  
Revised October 12, 2005

Submit to Appropriate District Office  
State Lease - 4 Copies  
Fee Lease - 3 Copies

OIL CONSERVATION DIVISION  
1220 South St. Francis Dr.  
Santa Fe, New Mexico 87505

☐ AMENDED REPORT

WELL LOCATION AND ACREAGE DEDICATION PLAT

API Number 30-015-35559	Pool Code	Pool Name Chosa Draw; Atoka (Gas) Wildcat
Property Code	Property Name HOMER STATE COM	Well Number 1
OGRID No. 162683	Operator Name CIMAREX ENERGY CO. OF COLORADO	Elevation 3601'

Surface Location

UL or lot No. C	Section 2	Township 25 S	Range 25 E	Lot Idn	Feet from the 660	North/South line NORTH	Feet from the 1980	East/West line WEST	County EDDY
--------------------	--------------	------------------	---------------	---------	----------------------	---------------------------	-----------------------	------------------------	----------------

Bottom Hole Location If Different From Surface

UL or lot No.	Section	Township	Range	Lot Idn	Feet from the	North/South line	Feet from the	East/West line	County
Dedicated Acres 320	Joint or Infill	Consolidation Code P	Order No. DHC Pending						

NO ALLOWABLE WILL BE ASSIGNED TO THIS COMPLETION UNTIL ALL INTERESTS HAVE BEEN CONSOLIDATED  
OR A NON-STANDARD UNIT HAS BEEN APPROVED BY THE DIVISION

	<p>Lat - N32°09'52.7\"/&gt; Long - W104°22'07.3\"/&gt; NMSPEC - N 423629.039 E 530400.458 (NAD-83)</p>	<p><b>OPERATOR CERTIFICATION</b></p> <p>I hereby certify that the information contained herein is true and complete to the best of my knowledge and belief, and that this organization either owns a working interest or unleased mineral interest in the land including the proposed bottom hole location pursuant to a contract with an owner of such a mineral or working interest, or to a voluntary pooling agreement or a compulsory pooling order heretofore entered by the division.</p> <p><i>Zeno Farris</i> 08-22-07 Signature Date</p> <p>Zeno Farris Printed Name</p>
		<p><b>SURVEYOR CERTIFICATION</b></p> <p>I hereby certify that the well location shown on this plat was plotted from field notes of actual surveys made by me or under my supervision, and that the same is true and correct to the best of my belief.</p> <p>MARCH 29 2007</p> <p>Date Surveyed Signature &amp; Seal Professional Surveyor</p> <p> Certificate No. Gary L. Jones 7977</p> <p>BASIN SURVEYS</p>



## MORROW COMPLETION PROCEDURE

### Homer State Com #1

660' FnL 1,980' FwL

Sec. 2, T25S, R25E

Eddy County, NM

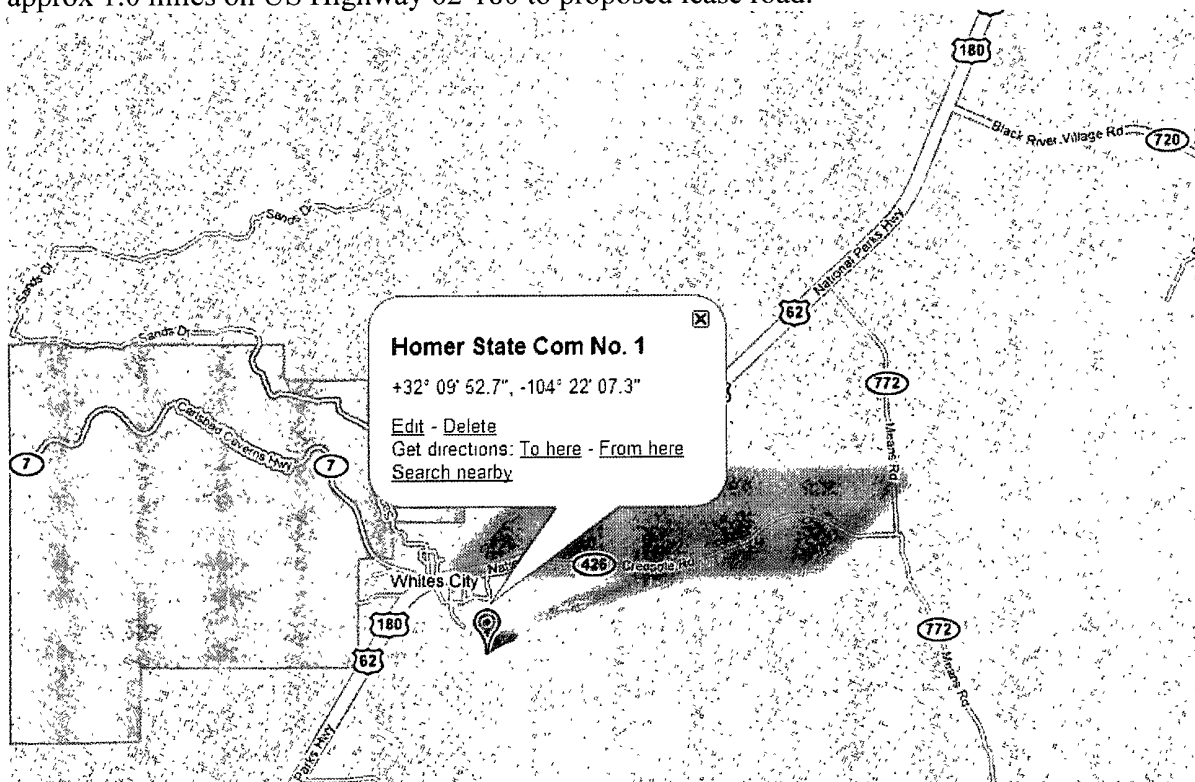
Prepared by: Ryan Braxton

8/17/2007

API # 30-025-35559

AFE # 257071

**Directions:** From the Jct of US Highway 62-180 and CO Road 724 (Whites City), go North approx 1.0 miles on US Highway 62-180 to proposed lease road.



GL	3,601'	KB	3,620'
TD	11,815'	PBTD	11,900'

Surface casing:	9-5/8" 40# K55 LTC	0 – 2,424'
-----------------	--------------------	------------

Production	4-1/2" 11.6# P110 LTC	0 – 11,900'
------------	-----------------------	-------------

Set in 9.7 ppg mud

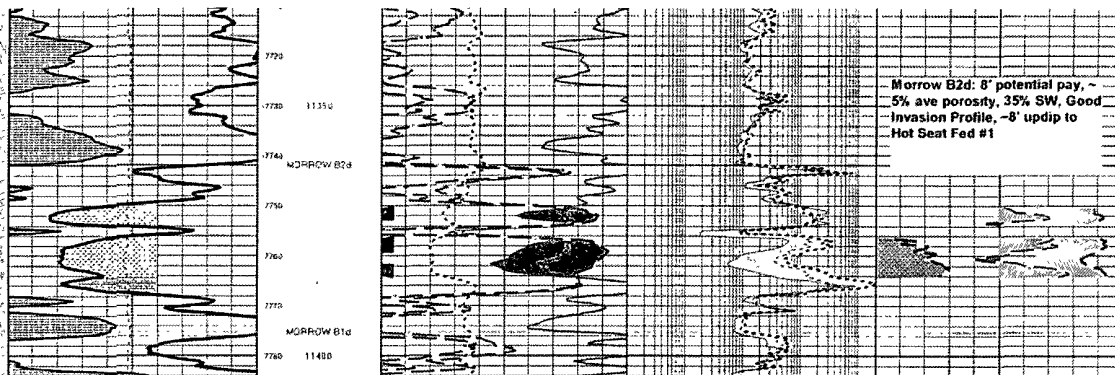
	4-1/2" 11.6# P110 LTC	2-3/8" 4.7# L80 8Rd EUE
I.D., in.	4.000	1.995
Drift, in.	3.875	1.901
Burst, psi	10,690	11,200
Collapse, psi	7,580	11,780
Tension, lbs	279,000	104,300
Capacity – gals/ft,	0.6528	0.162
Capacity – bbls/ft	0.0155	0.00386

Top flange: 7-1/16" 5K

CIMAREX ENERGY  
Homer State #1 Morrow Completion Procedure

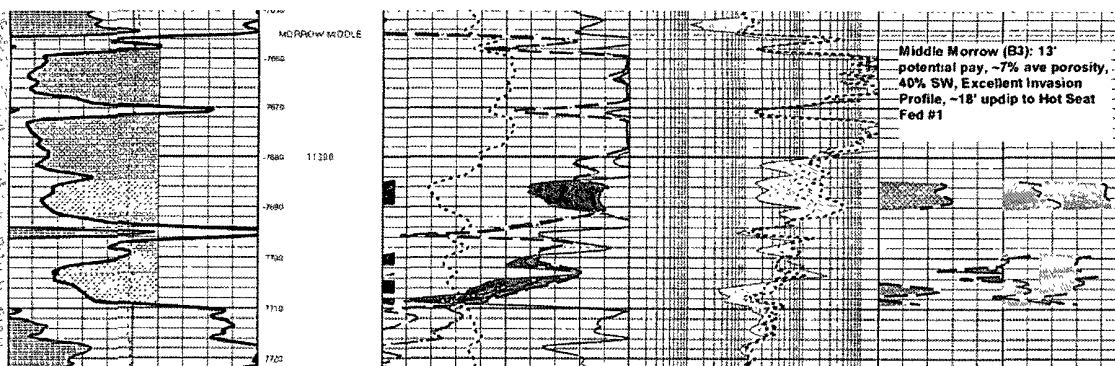
1. MIRU well service unit and flowback equipment.
2. Bleed pressure off 4-1/2" x 9-5/8" annulus and fill with water.
3. NU 7-1/16" 5K dbl ram BOP dressed with blinds on bottom and 2-3/8" pipe rams on top. MIRU workover rig and reverse unit with pit.
4. Receive and CVD 11,900' 2 3/8" 4.7# L80 8Rd workstring.
5. PU and TIH w/ 3 7/8" bit and 4 1/2" casing scraper on 2-3/8" tbg and drillout DV tool at 7742' and CIH. Clean out to PBTD. Circulate hole clean.
6. Pickle tubing with 7-1/2% HCL. Reverse acid to flowback tank.
7. Displace acid with 7% KCL. Close pipe rams and pressure test casing to 3,000 psi. POOH Standing back tbg.
8. RU electric line truck and RIH w/ CBL/VDL/GR/CCL and log from PBTD to TOC, correlate to **Schlumberger Openhole log 8/12/07**. POOH. Send 2 hard copies of cased hole logs to Irving, & Midland and e-mail digital versions (one in viewable format and one in LAS format) to [drlgstupt@cimarex.com](mailto:drlgstupt@cimarex.com)
9. POOH. RU WLU. RIH and perf the following zones at 6 spf, 60 degree phasing:

**Morrow perfs**  
**11377-11384**  
**11370-11374**



10. POOH. Perform breakdown on zone.
11. RIH and perf the following zones at 6 spf, 60 degree phasing:

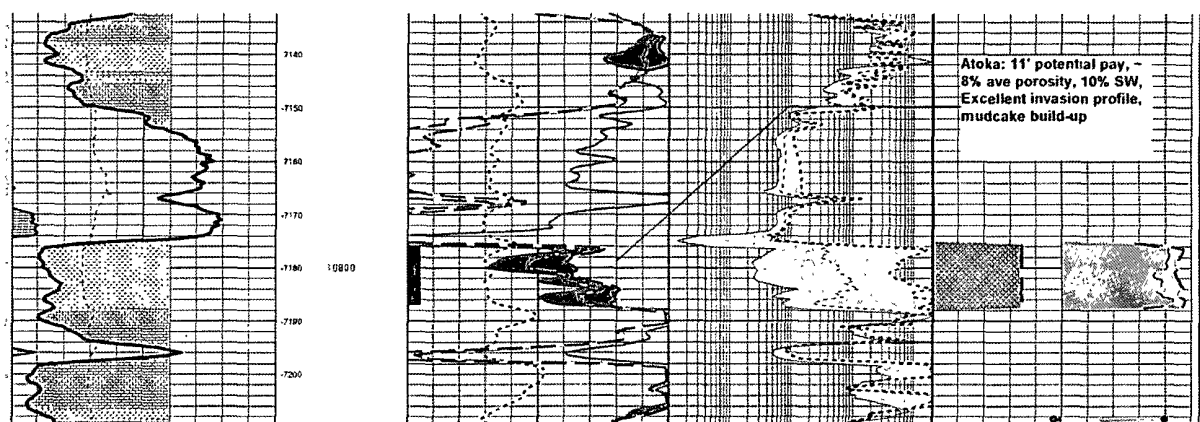
**Morrow perfs**  
**11319-11330**  
**11304-11310**



12. POOH and RD WLU. Prep to frac Morrow perfs down casing.

CIMAREX ENERGY  
Homer State #1 Morrow Completion Procedure

13. Frac Morrow perms as designed, flow back, and clean up.
14. RIH w/ GR and JB to +/- 11000'. POOH and RIH w/ composite bridge and set at 11000'. Dump 10' cement.
15. RIH w/ TCP assembly as specified by attached Halliburton bid. Tally in hole to approx. depth.
16. RU EL and GIH w/ GR/CCL to verify depth to put top shot at 10,796' (perf interval 10796-10808).
17. POOH w/ EL. Space out and set pkr leaving 12K compression.
18. Remove BOP. Install wellhead. Drop tube to open vent. Test pkr.
19. Drop bar to fire the guns.



20. Flow test well.
21. Soft kill Atoka and POH. LD TCP BHA. Frac and flowback Atoka if needed.
22. RU air foam unit. RIH w/ 3 7/8" bit w/ pump off sub. Drill out CIBP and clean and washout well to +/- PBTD.
23. Pump off bit. PU and hang off tbg according to Production specifications. Turn to sales.

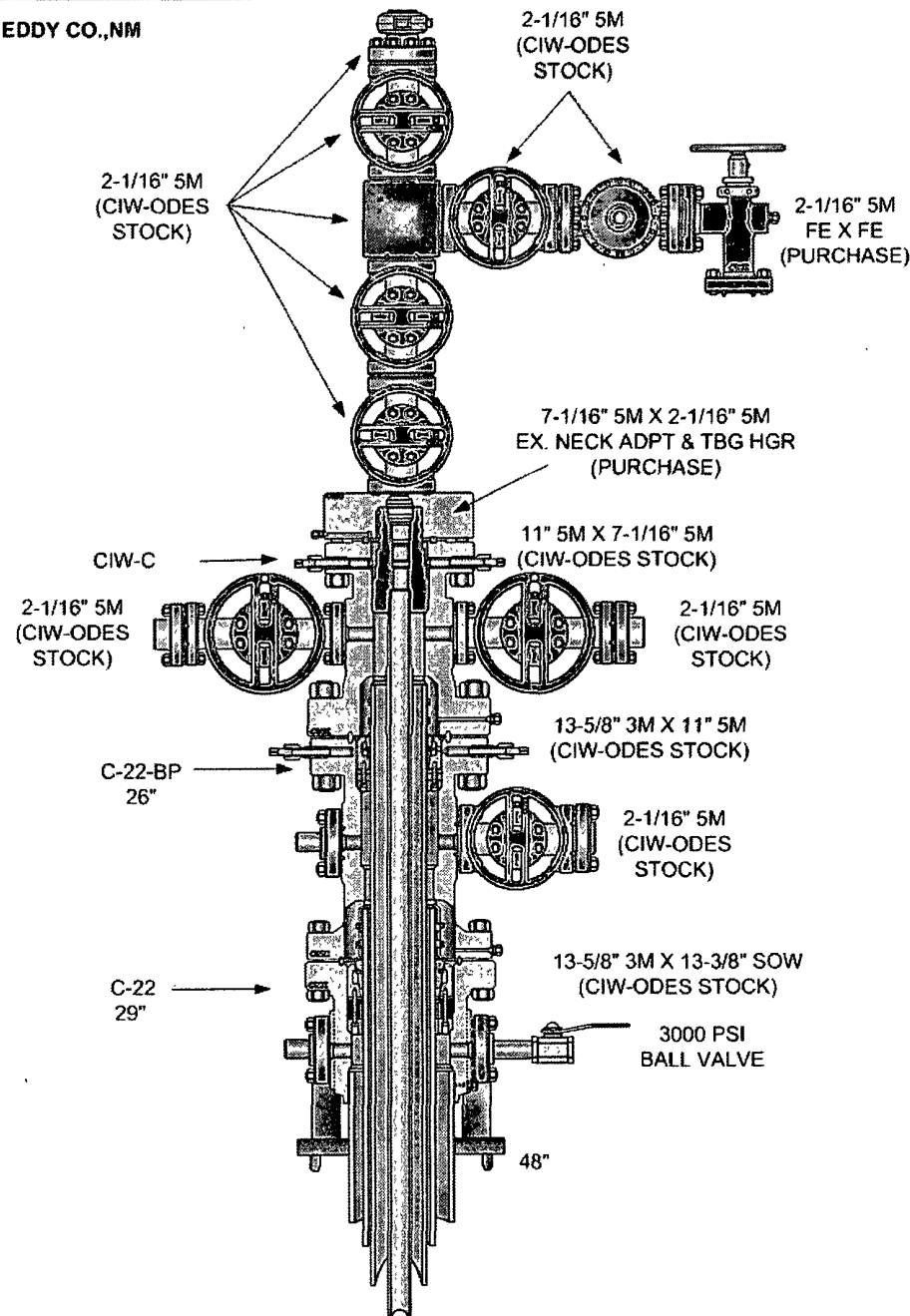
TUBULAR PROGRAM  
300' 13-3/8" 48# H-40 ST&C  
2,400' 9-5/8" 40# J-55 LT&C  
11,900' 4-1/2" 11.60# P-110 LT&C  
11,900' 2-3/8" 4.70# L-80 8RD



HOMER STATE  
COM #1

CIW FOR SERVICE  
WEAR BUSHING IN  
CASING SPOOL

EDDY CO.,NM



PREPARED ON 6-9-07

[illegible]