

District I  
PO Box 1980, Hobbs, NM 88241-1980

District II  
811 South First, Artesia, NM 88210

District III  
1000 Rio Brazos Rd., Aztec, NM 87410

District IV  
2040 South Pacheco, Santa Fe, NM 87505

State of New Mexico  
Energy, Minerals & Natural Resources Department

OIL CONSERVATION DIVISION

2040 South Pacheco

Santa Fe, NM 87505

Form C-101

Revised October 18, 1994

Instructions on back

Submit to Appropriate District Office

State Lease - 6 Copies

Fee Lease - 5 Copies

☐ AMENDED REPORT

APPLICATION FOR PERMIT TO DRILL, RE-ENTER, DEEPEN, PLUG BACK, OR ADD A ZONE

<b>Operator Name and Address</b> Mewbourne Oil Company PO Box 5270 Hobbs, N.M. 88241		<b>OGRID Number</b> 14744
		<b>API Number</b> 30 - 0 15-33045
<b>Property Code</b>	<b>Property Name</b> Black River 35 State Com	<b>Well No.</b> 2

Surface Location

UL or lot no.	Section	Township	Range	Lot Idn	Feet from the	North/South line	Feet from the	East/West Line	County
A	35	23S	26E		660	North	660	East	Eddy

Proposed Bottom Hole Location If Different From Surface

UL or lot no.	Section	Township	Range	Lot Idn	Feet from the	North/South line	Feet from the	East/West Line	County
<b>Proposed Pool 1</b> South Carlsbad Morrow					<b>Proposed Pool 2</b>				

<b>Work Type Code</b> N	<b>Well Type Code</b> G	<b>Cable/Rotary</b> R	<b>Lease Type Code</b> S	<b>Ground Level Elevation</b> 3232
<b>Multiple</b>	<b>Proposed Depth</b> 12100	<b>Formation</b> Morrow	<b>Contractor</b> TBA	<b>Spud Date</b> 10-20-03

Proposed Casing and Cement Program

Hole Size	Casing Size	Casing weight/foot	Setting Depth	Sacks of Cement	Estimated TOC
17 1/2"	13 3/8"	48	500	500	Surface
12 1/4"	9 5/8"	40	4000	1500	Surface
8 3/4"	5 1/2"	17	12100	800	500' above WC

Describe the proposed program. If this application is to DEEPEN or PLUG BACK give the data on the present productive zone and proposed new productive zone. Describe the blowout prevention program, if any. Use additional sheets if necessary.

BOP Program: 2K Hydril (Exhibit #2) from surface casing to intermediate TD. Schaffer LWS or equivalent (Double-Ram-Hydraulic) 1500 series with Hydril 900 series (Exhibit #2A) from intermediate casing to TD. Rotating Head, PVT, Flow Monitor & Gas Separator will be installed before Wolfcamp.

Mud Program: 0-500'.. Fresh Water & Spud Mud.

500-4000'..FW mud. Then go to add brine before the salt. Sweeps as needed.

4000-12800'..9.3-10.0 #/g Cut Brine. WL & Viscosity increase as needed.

H2S Program: MOC has researched the area & found no problems of H2S. MOC will still have H2S monitors & wind socks.

I hereby certify that the information given above is true and complete to the best of my knowledge and belief.

Signature:

Printed name: N.M. Young

Title: District Manager

OIL CONSERVATION DIVISION

Approved By:

Title:

Approval Date:

Expiration Date:

OCT 15 2003

OCT 15 2004

Cement to cover all oil, gas and water bearing zones.

DISTRICT I  
1623 N. French Dr., Hobbs, NM 88240

DISTRICT II  
811 South First, Artesia, NM 88210

DISTRICT III  
1000 Rio Brazos Rd., Aztec, NM 87410

DISTRICT IV  
2040 South Pacheco, Santa Fe, NM 87505

State of New Mexico  
Energy, Minerals and Natural Resources Department

Form C-102  
Revised March 17, 1999  
Instruction on back  
Submit to Appropriate District Office  
State Lease - 4 Copies  
Fee Lease - 3 Copies

OIL CONSERVATION DIVISION  
P.O. Box 2088  
Santa Fe, New Mexico 87504-2088

☐ AMENDED REPORT

WELL LOCATION AND ACREAGE DEDICATION PLAT

API Number	Pool Code 73960	Pool Name South Carlsbad Morrow
Property Code	Property Name BLACK RIVER "35" STATE COM.	Well Number 2
OGRID No. 14744	Operator Name MEWBOURNE OIL COMPANY	Elevation 3232

Surface Location

UL or lot No.	Section	Township	Range	Lot Idn	Feet from the	North/South line	Feet from the	East/West line	County
A	35	23S	26E		660	NORTH	660	EAST	EDDY

Bottom Hole Location If Different From Surface

UL or lot No.	Section	Township	Range	Lot Idn	Feet from the	North/South line	Feet from the	East/West line	County

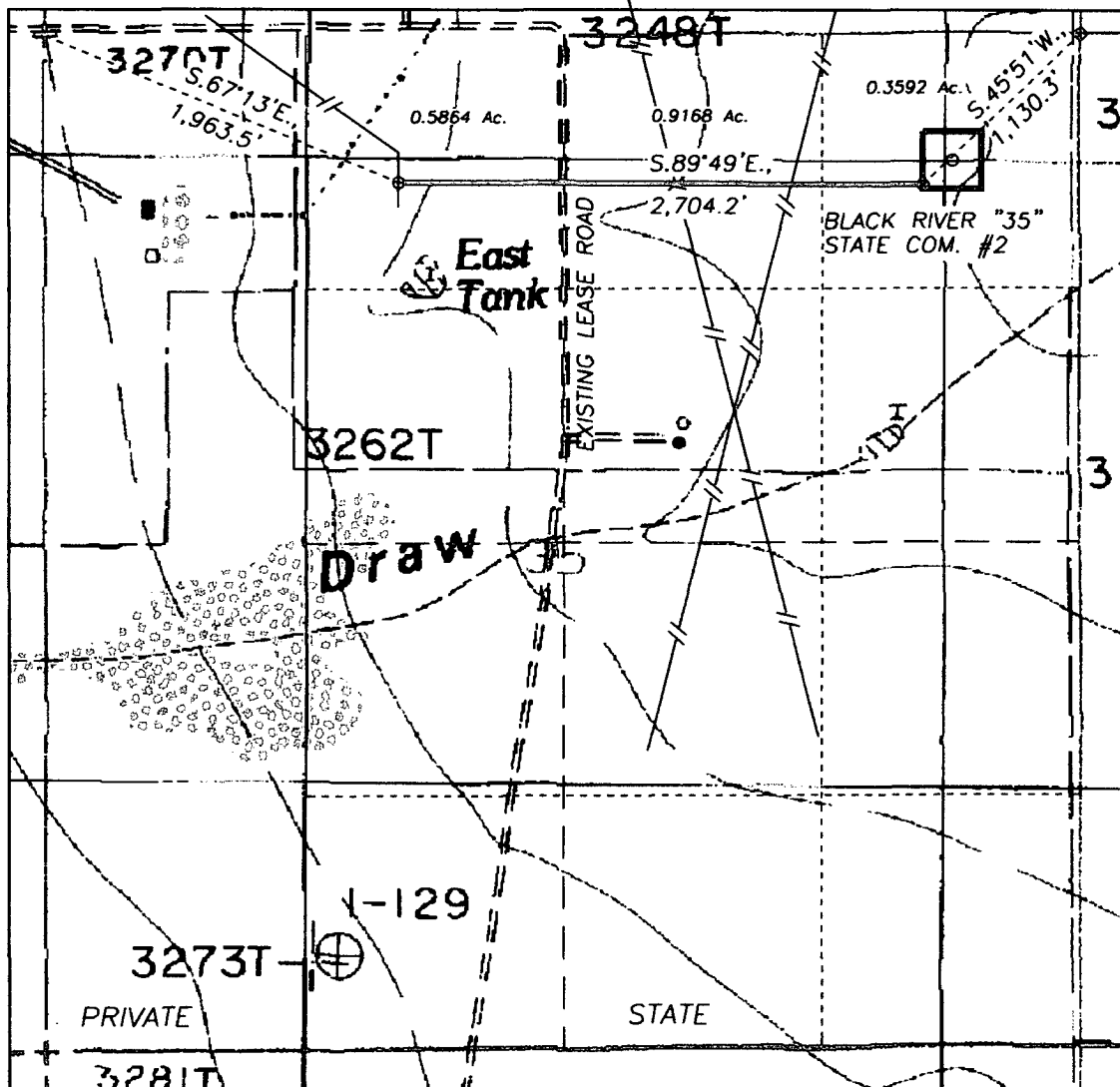
Dedicated Acres 320	Joint or Infill	Consolidation Code	Order No.
------------------------	-----------------	--------------------	-----------

NO ALLOWABLE WILL BE ASSIGNED TO THIS COMPLETION UNTIL ALL INTERESTS HAVE BEEN CONSOLIDATED  
OR A NON-STANDARD UNIT HAS BEEN APPROVED BY THE DIVISION

	<p><b>OPERATOR CERTIFICATION</b></p> <p>I hereby certify the the information contained herein is true and complete to the best of my knowledge and belief.</p> <p><u>N.M. Young</u> Signature N.M. Young Printed Name District Manager Title 10/10/03 Date</p> <p><b>SURVEYOR CERTIFICATION</b></p> <p>I hereby certify that the well location shown on this plat was plotted from field notes of actual surveys made by me or under my supervision, and that the same is true and correct to the best of my belief.</p> <p>10/09/2003 Date Surveyed</p> <p><u>[Signature]</u> Signature &amp; Seal of Professional Surveyor HERSCHEL L. JONES Certificate No. Herschel Jones RLS 3640 BLACK RIVER 35 GENERAL SURVEYING COMPANY</p>
--	-----------------------------------------------------------------------------------------------------------------------------------------------------------------------------------------------------------------------------------------------------------------------------------------------------------------------------------------------------------------------------------------------------------------------------------------------------------------------------------------------------------------------------------------------------------------------------------------------------------------------------------------------------------------------------------------------------------------------------------------------------------------------------------------

0 330' 660' 990' 1650' 1980' 2310' 2310' 1980' 1650' 990' 660' 330' 0'

SECTION 35, TOWNSHIP 23 SOUTH, RANGE 26 EAST, NMPM, EDDY COUNTY, NEW MEXICO.



DESCRIPTION:

A PIPELINE RIGHT OF WAY 30 FEET WIDE, BEING 15 FEET TO THE LEFT AND RIGHT OF THE FOLLOWING DESCRIBED SURVEY CENTERLINE;

BEGINNING AT A POINT LOCATED ON AN EXISTING MEWBOURNE PIPELINE AND BEARING S.67°13'E., 1,963.5 FEET DISTANT FROM THE NORTHWEST CORNER OF SECTION 35, TOWNSHIP 23 SOUTH, RANGE 26 EAST, NMPM, EDDY COUNTY, NEW MEXICO; THENCE S.89°49'E., 2,704.2 FEET TO A POINT LOCATED S.45°51'W., 1,130.3 FEET DISTANT FROM THE NORTHEAST CORNER OF SAID SECTION 35.

SAID TRACT CONTAINS 1.8624 ACRES, MORE OR LESS, ALLOCATED BY FORTY ACRE TRACTS AS FOLLOWS;  
NE/4NW/4 51.6000 RODS, 0.5864 Ac.; NW/4NE/4 80.6788 RODS, 0.9168 Ac.; NE/4N4/4 31.6121 RODS, 0.3592 Ac.

2,704.2 FEET = 163.8909 RODS, MORE OR LESS.

NOTE; A LEASE ROAD WILL BE BUILT ALONG SIDE THAT PORTION OF PIPELINE LOCATED IN THE N/2NE/4.

1000' 0 1000' 2000'  
Scale 1" = 1000'

THE PREPARATION OF THIS PLAT AND THE PERFORMANCE OF THE SURVEY UPON WHICH IT IS BASED WERE DONE UNDER MY DIRECTION AND THE PLAT ACCURATELY DEPICTS THE RESULTS OF THE SURVEY AND MEET THE REQUIREMENTS OF THE STANDARDS FOR LAND SURVEYS IN NEW MEXICO AS ADOPTED BY THE NEW MEXICO STATE BOARD OF REGISTRATION FOR PROFESSIONAL ENGINEERS AND LAND SURVEYORS.

*[Signature]*  
HERSCHEL JONES, R.L.S. No. 3640

GENERAL SURVEYING COMPANY, P.O. BOX 1928  
LOVINGTON, NEW MEXICO 88260

MEWBOURNE OIL COMPANY

PIPELINE TO CONNECT THE MEWBOURNE BLACK RIVER "35" STATE COM. #2 WELL, LOCATED IN SECTION 35, TOWNSHIP 23 SOUTH, RANGE 26 EAST, NMPM, EDDY COUNTY, NEW MEXICO.

Survey Date: 10/08/2003	Sheet 1 of 1 Sheets
Drawn By: Ed Blevins	W.O. Number
Date: 10/08/03	Scale 1" = 1000' BK RVR35-2

Mewbourne Oil Company  
BOP Schematic for  
12 1/4" Hole

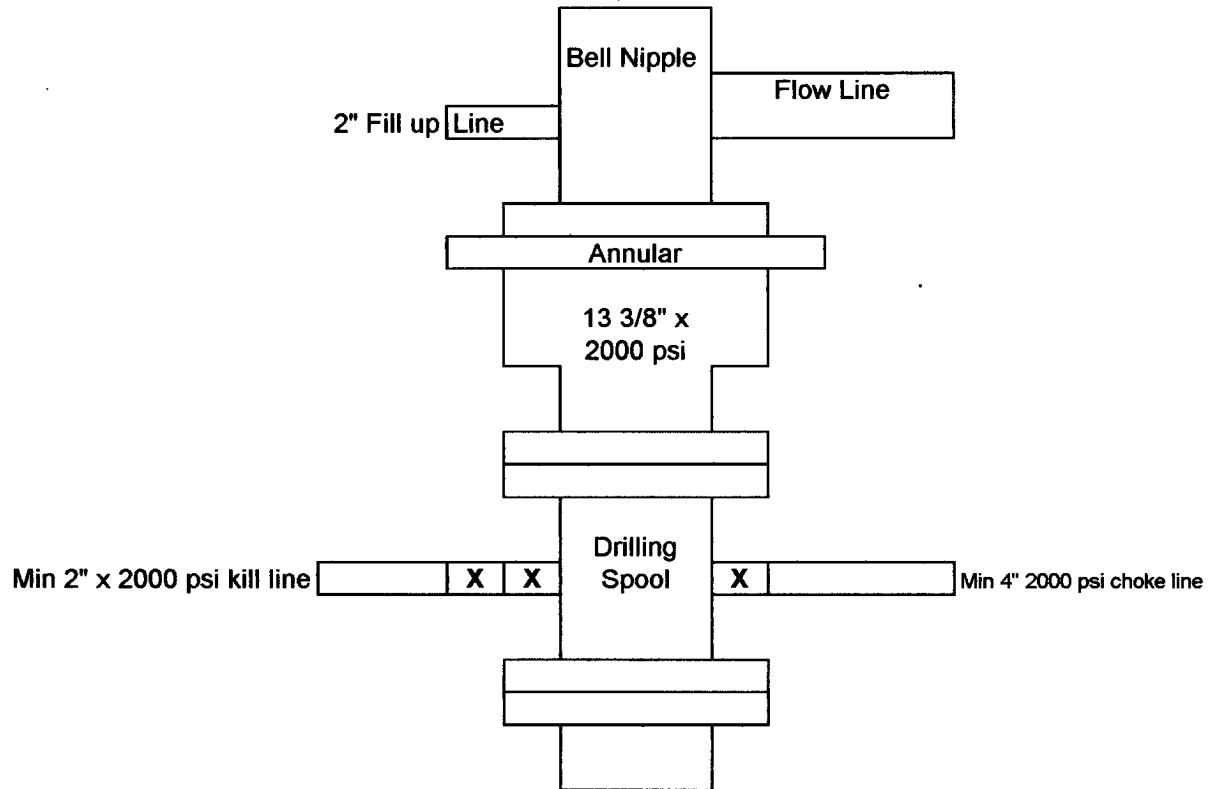


Exhibit #2

Black River 35 State Com #2  
660' FNL & 660' FEL  
Sec. 35 T-23S R-26E  
Eddy, County New Mexico

Mewbourne Oil Company  
BOP Schematic for  
8 3/4" or 7 7/8" Hole

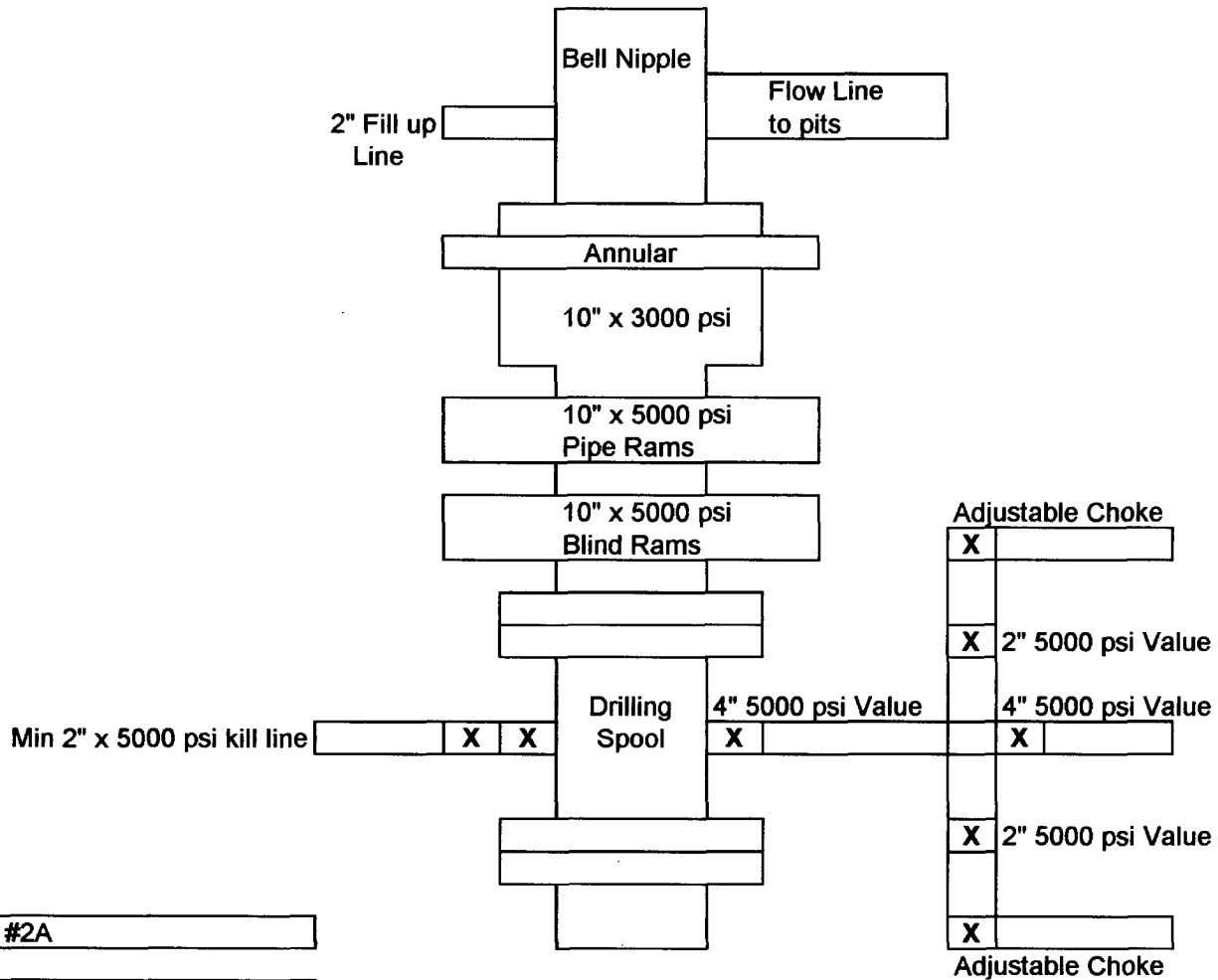


Exhibit #2A

Black River 35 State Com #2  
660' FNL & 660' FEL  
Sec. 35 T-23S R-26E  
Eddy, County New Mexico