

UNITED STATES DEPARTMENT OF THE INTERIOR BUREAU OF LAND MANAGEMENT

Oil Cons. N.M. DIV. DIST. 2 1501 W. Grand Avenue Artesia, NM 88210

FORM APPROVED OMB NO. 1004-0136 Expires: February 28, 1995

APPLICATION FOR PERMIT TO DRILL OR DEEPEN

1a. TYPE OF WORK DRILL [X] DEEPEN [] POTASH

b. TYPE OF WELL OIL WELL [X] GAS WELL [] OTHER [] SINGLE ZONE [X] MULTIPLE ZONE []

2. NAME OF OPERATOR POGO PRODUCING COMPANY (RICHARD WRIGHT)

3. ADDRESS AND TELEPHONE NO. P.O. BOX 10340 MIDLAND, TEXAS 79702-7340 (432-685-8100)

4. LOCATION OF WELL (Report location clearly and in accordance with any State requirements.) 2310' FNL & 660' FWL SECTION 7 T24S-R31E, EDDY CO. NM

14. DISTANCE IN MILES AND DIRECTION FROM NEAREST TOWN OR POST OFFICE: Approximately 30 miles South Southeast of Carlsbad New Mexico

13. DISTANCE FROM PROPOSED LOCATION TO NEAREST PROPERTY OR LEASE LINE, FT. (Also to nearest drlg. unit line, if any) 660'

16. NO. OF ACRES IN LEASE 600

17. NO. OF ACRES ASSIGNED TO THIS WELL 40

19. PROPOSED DEPTH 8400'

20. ROTARY OR CABLE TOOLS ROTARY

21. ELEVATIONS (Show whether DF, RT, GR, etc.) 3508' GR.

22. APPROX. DATE WORK WILL START WHEN APPROVED

23. PROPOSED CASING AND CEMENTING PROGRAM CARLSBAD CONTROLLED WATER BASIN

Table with 5 columns: SIZE OF HOLE, GRADE SIZE OF CASING, WEIGHT PER FOOT, SETTING DEPTH, QUANTITY OF CEMENT. Rows include 25" Conductor, 17 1/2" H-40, 11" J-55, and 7 7/8" J-55 casing details.

1. Drill 25" hole to 40'. Set 40' of 20" conductor and cement to surface with Redi-mix.

2. Drill 17 1/2" hole to 975'. Run and set 975' of 13 3/8" 48# H-40 ST&C casing. Cement with 600 Sx. of 35/65/6 Class "C" POZ/Gel, tail in with 200 Sx. of Class "C" cement + 2% CaCl, + 1/2# Flocele/Sx., circulate cement to surface.

3. Drill 11" hole to 4150'. Run and set 4150' of 8 5/8" 32# J-55 ST&C casing. Cement with 1000 Sx. of 35/65/6 Class "C" POZ/Gel, + 5% Salt, tail in with 200 Sx. of Class "C" cement + 2% CaCl, + 1/2# Flocele/Sx., circulate cement to surface.

4. Drill 7 7/8" hole to 8400'. Run and set 8400' of 5 1/2" casing as follows: 2400' of 5 1/2" 17# J-55 LT&C, 5000' of 5 1/2" 15.5# J-55 LT&C, 1000' of 5 1/2" 17# J-55 LT&C casing.

Cement in 3 stages with DV Tools at 5800' & 3700'±. Cement 1st stage with 650 Sx. of Class "H" cement + additives, Cement 2nd stage with 600 Sx. of Class "C" cement + 8# Gilsonite/Sx., cement 3rd stage with 400 Sx. of 35/65/6 Class "C" POZ/Gel, tail in with 100 Sx. of Class "C" cement + 1% CaCl, circulate cement to surface.

IN ABOVE SPACE DESCRIBE PROPOSED PROGRAM: If proposal is to deepen, give data on present productive zone and proposed new productive zone. If proposal is to drill or deepen directionally, give pertinent data on subsurface locations and measured and true vertical depths. Give blowout preventer program, if any.

24. APPROVAL SUBJECT TO GENERAL REQUIREMENTS AND SPECIAL STIPULATIONS

SIGNED [Signature] TITLE Agent APPROVAL DATE 08/22/03 ATTACHED

PERMIT No. APPROVAL DATE Application approval does not warrant or certify that the applicant holds legal or equitable title to those rights in the subject lease which would entitle the applicant to conduct operations thereon.

CONDITIONS OF APPROVAL, IF ANY: APPROVED BY William S. Condit ACTING STATE DIRECTOR DATE 10 OCT 2003

*See Instructions On Reverse Side

DISTRICT I
P.O. Box 1880, Hobbs, NM 88241-1880

State of New Mexico
Energy, Minerals and Natural Resources Department

Form C-102
Revised February 10, 1994
Submit to Appropriate District Office
State Lease - 4 Copies
Fee Lease - 3 Copies

DISTRICT II
P.O. Drawer DD, Artesia, NM 88211-0719

OIL CONSERVATION DIVISION
P.O. Box 2088

Santa Fe, New Mexico 87504-2088

DISTRICT III
1000 Rio Brazos Rd., Aztec, NM 87410

DISTRICT IV
P.O. Box 2088, SANTA FE, N.M. 87504-2088

WELL LOCATION AND ACREAGE DEDICATION PLAT

AMENDED REPORT

API Number	Pool Code 53818	Pool Name SAND DUNES DELAWARE SOUTH
Property Code	Property Name PALLADIUM 7 FEDERAL	Well Number 8
OGRID No. 17891	Operator Name POGO PRODUCING COMPANY	Elevation 3508'

Surface Location

UL or lot No.	Section	Township	Range	Lot Idn	Feet from the	North/South line	Feet from the	East/West line	County
2	7	24-S	31-E		2310	NORTH	660	WEST	EDDY

Bottom Hole Location If Different From Surface

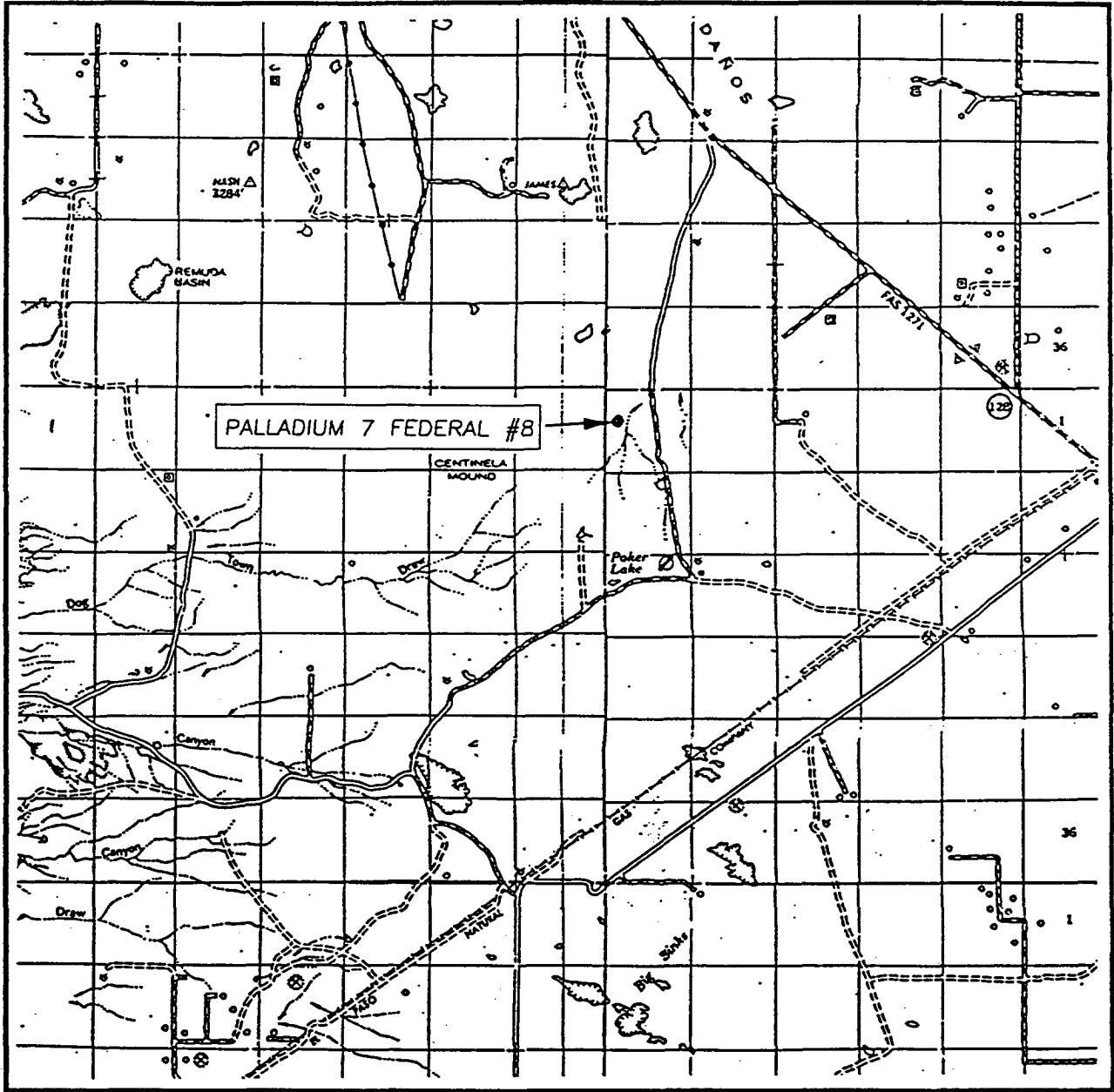
UL or lot No.	Section	Township	Range	Lot Idn	Feet from the	North/South line	Feet from the	East/West line	County

Dedicated Acres 40	Joint or Infill	Consolidation Code	Order No.
-----------------------	-----------------	--------------------	-----------

NO ALLOWABLE WILL BE ASSIGNED TO THIS COMPLETION UNTIL ALL INTERESTS HAVE BEEN CONSOLIDATED OR A NON-STANDARD UNIT HAS BEEN APPROVED BY THE DIVISION

	<p>OPERATOR CERTIFICATION</p> <p>I hereby certify the the information contained herein is true and complete to the best of my knowledge and belief.</p> <p><i>Joe E. Janica</i> Signature</p> <p>Joe E. Janica Printed Name</p> <p>Agent Title</p> <p>08/22/03 Date</p>
	<p>SURVEYOR CERTIFICATION</p> <p>I hereby certify that the well location shown on this plat was plotted from field notes of actual surveys made by me or under my supervision, and that the same is true and correct to the best of my belief.</p> <p>AUGUST 11, 2003</p> <p>Date Surveyed _____ L.A.</p> <p>Signature & Seal <i>Ronald J. Edson</i> Professional Surveyor</p> <p><i>Ronald J. Edson</i> 8/12/03 05.11.0876</p> <p>Certificate No. RONALD J. EDSON 3239 GARY EDSON 12641</p>

VICINITY MAP



SCALE: 1" = 2 MILES

SEC. 7 TWP. 24-S RGE. 31-E

SURVEY N.M.P.M.

COUNTY EDDY

DESCRIPTION 2310' FNL & 660' FWL

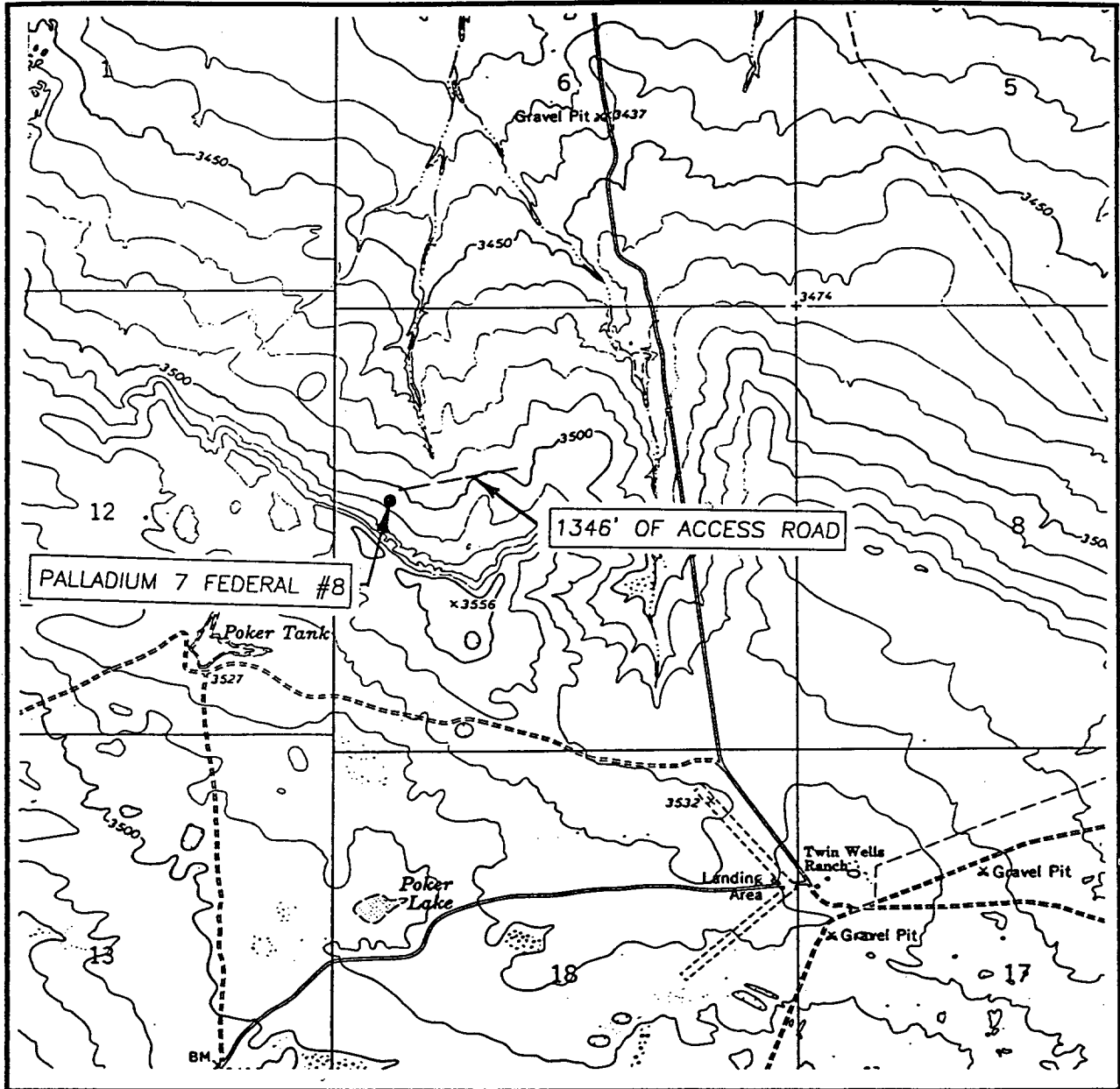
ELEVATION 3508'

OPERATOR POGO PRODUCING COMPANY

LEASE PALLADIUM 7 FEDERAL

JOHN WEST SURVEYING
HOBBS, NEW MEXICO
(505) 393-3117

LOCATION VERIFICATION MAP



SCALE: 1" = 2000'

CONTOUR INTERVAL: 10'
BIG SINKS, N.M.

SEC. 7 TWP. 24-S RGE. 31-E

SURVEY N.M.P.M.

COUNTY EDDY

DESCRIPTION 2310' FNL & 660' FWL

ELEVATION 3508'

OPERATOR POGO PRODUCING COMPANY

LEASE PALLADIUM 7 FEDERAL

U.S.G.S. TOPOGRAPHIC MAP

BIG SINKS, N.M.

**JOHN WEST SURVEYING
HOBBS, NEW MEXICO
(505) 393-3117**

APPLICATION TO DRILL

POGO PRODUCING COMPANY
 PALLADIUM "7" FEDERAL # 8
 UNIT "E" LOT 2 SECTION &
 T24S-R31E EDDY CO. NM

In response to questions asked under Section II of Bulletin NTL-6 the following information on the above well is provided for your consideration.

1. Location of well: 660' FWL 2310' FNL SECTION 7 T24S-R31E EDDY CO. NM
2. Ground Elevation above Sea Level: 3508' GR.
3. Geological age of surface formation: Quaternary Deposits:
4. Drilling tools and associated equipment: Conventional rotary drilling rig using drilling mud as a circulating medium to remove solids from hole.
5. Proposed drilling depth: 8400'
6. Estimated tops of geological markers:

Rustler Anhydrite	940'	Cherry Canyon	5160'
Basal Anhydrite	4020'	Manzanita	5340'
Delaware Lime	4240'	Brushy Canyon	6400'
Bell Canyon	4260'	Bone Spring	8070'

7. Possible mineral bearing formations:

Bone Spring Oil

8. Casing Program:

Hole Size	Interval	OD of Casing	Weight	Thread	Collar	Grade
25"	0-40'	20"	NA	NA	NA	Conductor
17½"	0-975'	13 3/8"	48#	8-R	ST&C	H-40
11"	0-4150'	8 5/8"	32#	8-R	ST&C	J-55
7 7/8"	0-8400'	5½"	17 & 15.5	8-R	LT&C	J-55

APPLICATION TO DRILL

POGO PRODUCING COMPANY
 PALLADIUM "7" FEDERAL # 8
 UNIT "E" LOT 2 SECTION &
 T24S-R31E EDDY CO. NM

9. CASING CEMENTING & SETTING DEPTH:

20"	Conductor	Set 40' of 20" conductor pipe and cement to surface with Redi-mix.
13 3/8"	Surface	Set 975' of 13 3/8" 48# H-40 ST&C casing. Cement with 600 Sx. of 65/35/6 Class "C" POZ/GEL, tail in with 200 Sx. of Class "C" cement + 2% CaCl, circulate to surface.
8 5/8"	Intermediate	Set 4150' of 8 5/8" 32# J-55 ST&C casing. cement with 1000 Sx. of Class "C" 65/35/6 POZ/GEL + 5% Salt, tail in with 200 Sx. of Class "C" + 2% CaCl, circulate cement.
5 1/2"	Production	Set 8400' of 5 1/2" 17 & 15.5# J-55 LT&C casing as follows: 2400' of 5 1/2" 17# J-55 LT&C, 5000' of 5 1/2" 15.5# J-55 LT&C, 1000' of 5 1/2" 17# J-55 LT&C. Cement in 3 stages W/DV Tool at 5800', 3700'±. Cement 1st stage with 650 Sx. of Class "H" + additives, cement 2nd stage with 600 Sx. of Class "C" + 5# Gilsonite/Sx., 3rd stage cement with 400 Sx. of 65/35/6 Class "C" POZ/Gel, tail in with 100 Sx. of Class "C" + 1% CaCl, circulate cement to surface.

10. PRESSURE CONTROL EQUIPMENT: Exhibit "E" shows a 900 series 3000 PSI working perssure B.O.P. consisting of an annular bag type preventor, middle blind rams, and bottom pipe rams. The B.O.P. will be nipped up on the 13 3/8" casing and tested to API specifications. The B.O.P. will be operated at least once each 24 Hr. period and the blind rams will be operated when the drill pipe is out of on trips. Full opening stabbing valve and upper kelly cock will be available in case if needed. Exhibit "E-1" shows a hydraulically operated closing unit and a 3" 3000 PSI choke manifold with adjustable chokes. No abnormal pressures or temperatures are expected while drilling this well. No problems in offset wells.

11. PROPOSED MUD CIRCULATING SYSTEM:

DEPTH	MUD WT.	VISC.	FLUID LOSS	TYPE MUD SYSTEM
40-975'	8.4-8.7	29-34	NC	Fresh water, add paper to control seepage.
975-4150'	10.0-10.2	29-38	NC	Brine water add paper to control seepage, use high viscosity sweeps to clean hole.
4150-8400'	8.4-8.7	29-40	NC *	Fresh water using high viscosity sweeps to clean hole, if water loss is desired through the pay section use a Dris-pac system.

* Water loss may be required while drilling the pay interval to protect formation, run DST's, logs, and casing. If require add Dris-pac to mud system.

Sufficient mud materials will be kept on location at all times in order to combat lost circulation, or unexpected kicks. In order to run DST's, open hole logs, and casing, viscosity, and water loss may have to be adjusted to meet these needs.

APPLICATION TO DRILL

POGO PRODUCING COMPANY
PALLADIUM "7" FEDERAL # 8
UNIT "E" LOT 2 SECTION &
T24S-R31E EDDY CO. NM

12. LOGGING, CORING, AND TESTING PROGRAM:

- A. Open hole logs: Run Dual Induction, LDR, SNP Gamma Ray, CALiper from TD back to 8 5/8" casing shoe.
- B. Cased hole logs: Run Gamma Ray, Neutron logs from 8 5/8" casing shoe back to surface.
- C. No cores or DST's are planned at this time, mud logger will be rigged up on hole at 4150'± and remain on hole to TD.

13. POTENTIAL HAZARDS:

No abnormal pressures or temperatures are expected. There is no known presence of H²S in this area. If H²S is encountered the operator will comply with the provisions of Onshore Oil and Gas Order No. 6. No lost circulation is expected to occur. All personnel will be familiar with all aspects of safe operation of equipment being used to drill this well. Estimated BHP 4500 PSI, and Estimated BHT 165°.

14. ANTICIPATED STARTING DATE AND DURATION OF OPERATION:

Road and location construction will begin after the BLM has approved the APD. Anticipated spud date will be as soon after BLM approval and as soon as a rig will be available. Move in operation and drilling is expected to take 28 days. If production casing is run then an additional 30 days will be needed to complete well and construct surface facilities and/or lay flowlines in order to place well on production.

15. OTHER FACETS OF OPERATIONS:

After running casing, cased hole Gamma Ray, Neutron Collar logs will be run from TD back to all possible productive zones. The Bone Spring formation will be perforated and stimulated in order to establish production. The well will be swab tested and potentialized as an oil well.

HYDROGEN SULFIDE DRILLING OPERATIONS PLAN

1. All Company and Contract personnel admitted on location must be trained by a qualified H₂S safety instructor to the following:
 - A. Characteristics of H₂S
 - B. Physical effects and hazards
 - C. Proper use of safety equipment and life support systems.
 - D. Principle and operation of H₂S detectors, warning system and briefing areas.
 - E. Evacuation procedure, routes and first aid.
 - F. Proper use of 30 minute pressure demand air pack.
2. H₂S Detection and Alarm Systems
 - A. H₂S detectors and audio alarm system to be located at bell nipple, end of blooie line (mud pit) and on derrick floor or doghouse.
3. Windssock and/or wind streamers
 - A. Windssock at mudpit area should be high enough to be visible.
 - B. Windssock at briefing area should be high enough to be visible.
 - C. There should be a windssock at entrance to location.
4. Condition Flags and Signs
 - A. Warning sign on access road to location.
 - B. Flags to be displayed on sign at entrance to location. Green flag, normal safe condition. Yellow flag indicates potential pressure and danger. Red flag, danger, H₂S present in dangerous concentration. Only emergency personnel admitted to location.
5. Well control equipment
 - A. See exhibit "E" & "E-1"
6. Communication
 - A. While working under masks chalkboards will be used for communication.
 - B. Hand signals will be used where chalk board is inappropriate.
 - C. Two way radio will be used to communicate off location in case of emergency help is required. In most cases cellular telephoned will be available at most drilling foreman's trailer or living quarters.
7. Drillstem Testing
 - A. Exhausts will be watered.
 - B. Flare line will be equipped with an electric ignitor or a propane pilot light in case gas reaches the surface.
 - C. If the location is near to a dwelling a closed DST will be performed.

HYDROGEN SULFIDE DRILLING OPERATIONS PLAN

8. Drilling contractor supervisor will be required to be familiar with the effects H₂S has on tubular goods and other mechanical equipment.
9. If H₂S is encountered, mud system will be altered if necessary to maintain control of formation. A mud gas separator will be brought into service along with H₂S scavengers if necessary.

SURFACE USE PLAN

POGO PRODUCING COMPANY
PALLADIUM "7" FEDERAL # 8
UNIT "E" LOT 2 SECTION 7
T24S-R31E EDDY CO. NM

1. EXISTING ROADS & PROPOSED ROADS: Area maps; Exhibit "B" is a reproduction of a County General Hi-way Map. Exhibit "C" is a reproduction of a USGS Topographic Map, showing existing and proposed roads. All existing roads will be maintained in a condition equal to or better than current conditions. Any new roads will be constructed to BLM specifications.
 - A. Exhibit "A" shows the proposed well site as staked.
 - B. From Hobbs New Mexico take U.S. HI-way 62-180 West toward Carlsbad New Mexico for approximately 40 miles, to WIPP Road, turn South go 13 miles to CR-802, turn Right follow road to State Hi-way 128, turn Left go 2.4 miles to Twin Wells Road, turn Right go 4.7± miles, turn West go past well # 2 follow road west to well # 5 location continue West approximately 1250' to location.
 - C. Exhibit "F" shows the proposed routes of roads, powerlines, and flowlines.

2. PLANNED ACCESS ROADS: Approximately 1250' of new road will be constructed.
 - A. The access roads will be crowned and ditched to a 12' wide travel surface with a 40' Right-of-Way.
 - B. Gradient of all roads will be less than 5.00%.
 - C. If turn-outs are necessary they will be constructed.
 - D. If needed roads will be surfaced with a minimum of 4" of caliche. This material will be obtained from a local source.
 - E. Center-line for new roads will be flagged. Earth-work will be will be done as field conditions require.
 - F. Culverts will be placed in the access road if they are necessary. The roads will be constructed to utilize low water crossings for drainage as required by topography.

3. LOCATIONS OF EXISTING WELLS IN A ONE MILE RADIUS. EXHIBIT "A-1"
 - A. Water wells - One approximately 1.3 miles Southeast of location
 - B. Disposal wells - None known
 - C. Drilling wells - none known
 - D. Producing wells - As shown on Exhibit "A-1"
 - E. Abandoned wells - As shown on Exhibit "A-1"

SURFACE USE PLAN

POGO PRODUCING COMPANY
PALLADIUM "7" FEDERAL # 8
UNIT "E" LOT 2 SECTION 7
T24S-R31E EDDY CO. NM

4. If on completion this well is a producer the operator will lay pipelines and construct powerlines along existing road R-O-W's or other existing R-O-W's. Possible routes of pipelines, flowlines and powerlines are shown on Exhibit "F".

5. LOCATION AND TYPE OF WATER SUPPLY:

Water will be purchased locally from a commercial source and trucked over the access roads or piped to location in flexible lines laid on top of the ground.

6. SOURCE OF CONSTRUCTION MATERIAL:

If possible construction material will be obtained from the excavation of drill site, if additional material is needed it will be obtained from a local source and transported over the access roads as shown on Exhibit "C".

7. METHODS OF HANDLING WASTE MATERIAL:

- A. Drill cuttings will be disposed of in the reserve pits.
- B. All trash, junk and other waste material will be contained in trash cages or trash bins to prevent scattering. When the job is completed all contents will be removed and disposed of in a approved sanitary land fill.
- C. Salts remaining after completion of well will be picked up by the supplier, including broken sacks.
- D. Waste water from living quarters will be drained into holes with a minium of 10'. These holes will be covered during drilling and will be back filled when the well is completed. A Porto-John will be provided for the rig crews. This equipment will be properly maintained during the drilling and completion operations and will be removed when all operations are complete.
- E. Remaining drilling fluids will be allowed to evaporate in the reserve pits until the pits are dry enough to be broken out for furthred drying. If the drilling fluids do not evaporate in a reasonable time they will be hauled off by transports to a state approve disposal site. Later pips will be broken out to speed drying. Water produced during completion will be put in reserve pits. Oil and condensate produced will be put in storage tanks and sold.

8. ANCILLARY FACILITIES:

- A. No camps or air strips will be constructed on location.

SURFACE USE PLAN

POGO PRODUCING COMPANY
PALLADIUM "7" FEDERAL # 8
UNIT "E" LOT 2 SECTION 7
T24S-R31E EDDY CO. NM

9. WELL SITE LAYOUT:

- A. Exhibit "D" shows the proposed well site layout.
- B. This Exhibit shows the location of reserve pit, sump pits, and living facilities.
- C. Mud pits in the active circulating system will be steel pits and the reserve pits will be unlined unless subsurface conditions encountered during pit construction indicate that a plastic liner is required to contain lateral migration.
- D. If needed the reserve pits will be lined with polyethelene. The pit liner will be no less than 6 mils thick and the liner will be extended at least 3 feet over the top of the dikes and secured in place to keep edge of liner in place.
- E. The reserve pit will be fenced on three sides and fenced with four strands of barbed wire during drilling and completion phases. The 4th side will be fenced after drilling operations are complete and the drilling rig has moved out. If the well is a producer the mud pits will remain fenced in until the mud has dried up enough to break out the pits and reclaimed according to BLM requirements.

10. PLANS FOR RESTORATION OF SURFACE:

Rehabilitation of the location and reserve pits will be allowed to dry properly, fluids may be moved and disposed of in accordance with article 7-E as previously noted. The pit area will then be leveled and contoured to conform to the original and surrounding area. Drainage systems, if any will be reshaped to the original configuration with provisions made to alleviate future erosion. In case of the well completed as a producer the drilling pad will be necessary to construct production facilities. After the area has been shaped and contoured top soil from the spoil pile will be placed over the disturbed area to the extent possible so that revegetation procedures can be accomplished to comply with the BLM specifications.

If the well is a dry hole the pad and road area will be contoured to match the existing terrain. Top soil will be spread to the extent possible and revegetation will be carried out according to the BLM specifications.

Should the well be a producer the previously noted procedures will apply to those areas which are not required for production facilities.

SURFACE USE PLAN

POGO PRODUCING COMPANY
PALLADIUM "7" FEDERAL # 8
UNIT "E" LOT 2 SECTION 7
T24S-R31E EDDY CO. NM

11. OTHER INFORMATION:

- A. Topography consists of open rolling plain covered with low dune hummocks. Soil is tan to red silty sand, mixed with caliche nodules and lag gravels. Vegetation is mesquite, desert holly, saltbush, snakeweed, sand sage, wolf-berry, and native grasses.
- B. The surface is owned by The U.S. Department of Interior and is administered by The Bureau of Land Management. The surface is used for the grazing of livestock and the production of Oil & Gas.
- C. An archaeological survey has been done and is on file in the Carlsbad Field Office of The Bureau of Land Management.
- D. There are no dwellings in the near vicinity of this location.

12. OPERATOR'S REPRESENTATIVES:

Before Construction:

TIERRA EXPLORATION, INC.
P.O. BOX 2188
HOBBS, NEW MEXICO 88241
OFFICE Ph. 505-391-8503
JOE T. JANICA

During and after Construction:

POGO PRODUCING COMPANY
P.O. BOX 10340
MIDLAND, TEXAS 79702-7340
RICHARD WRIGHT
OFFICE Ph. 915-685-8140

13. CERTIFICATION: I hereby certify that I, or persons under my direct supervision have inspected the proposed drill site and the access roads, and that I am familiar with the conditions which currently exist, that the statements made in this plan are to the best of my knowledge are true and correct, and that the work associated with the operations proposed herein will be performed by POGO PRODUCING COMPANY it's contractors/subcontractors is in conformity with this plan and the terms and conditions under which it is approved. This statement is subject to the provision of U.S.C. 1001 for the filing of a false report.

NAME : Joe T Janica
DATE : 08/22/08
TITLE : Agent

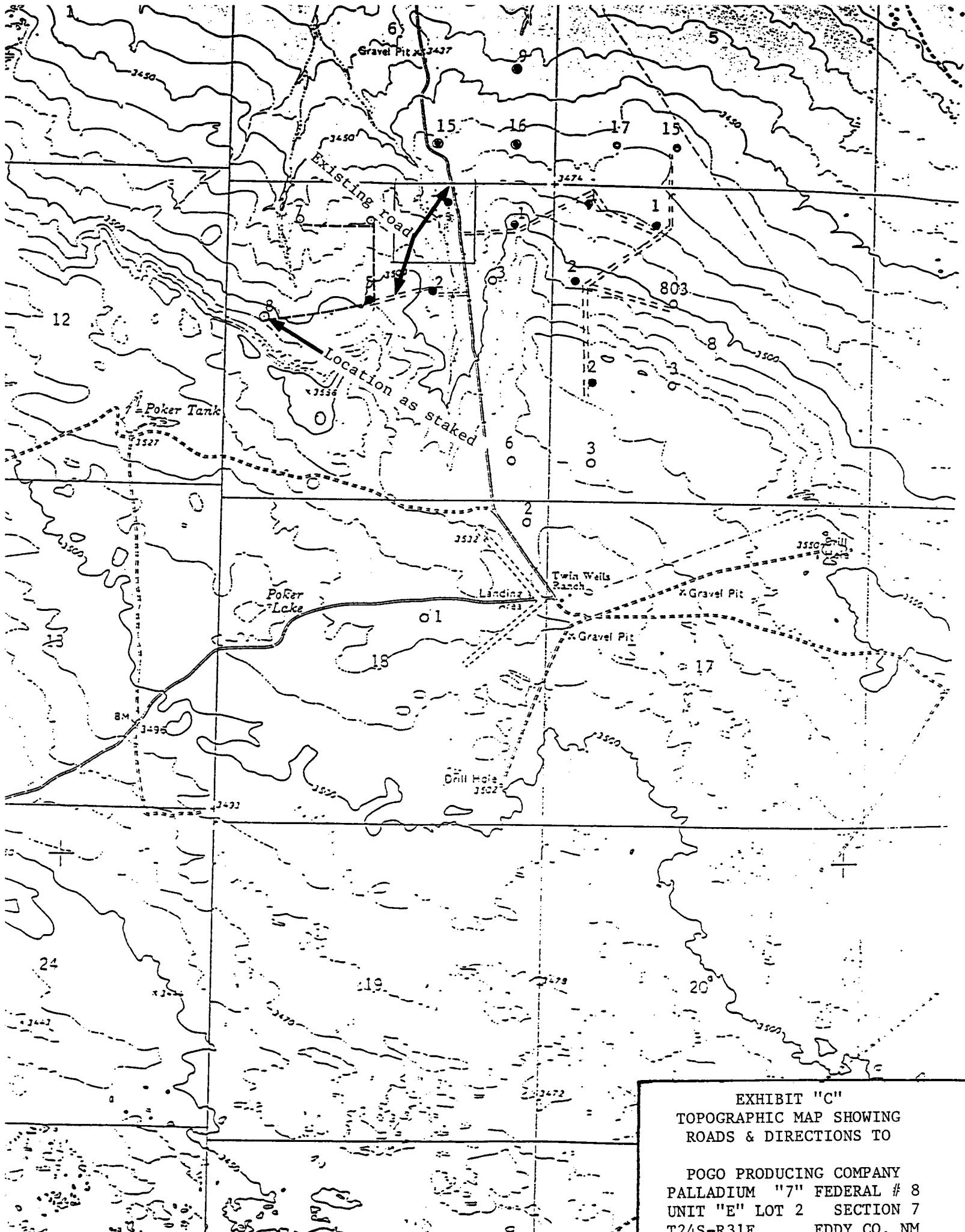
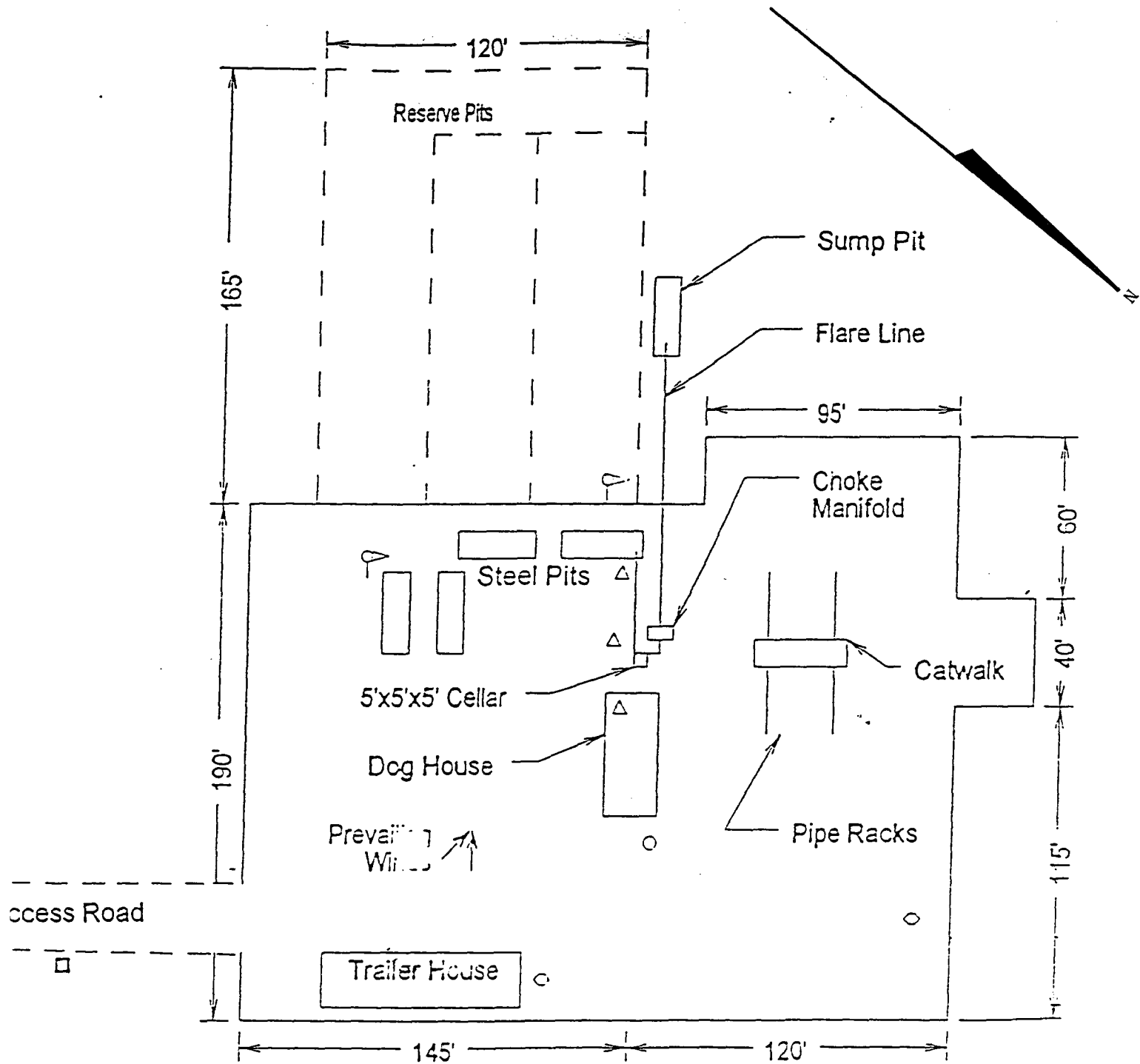


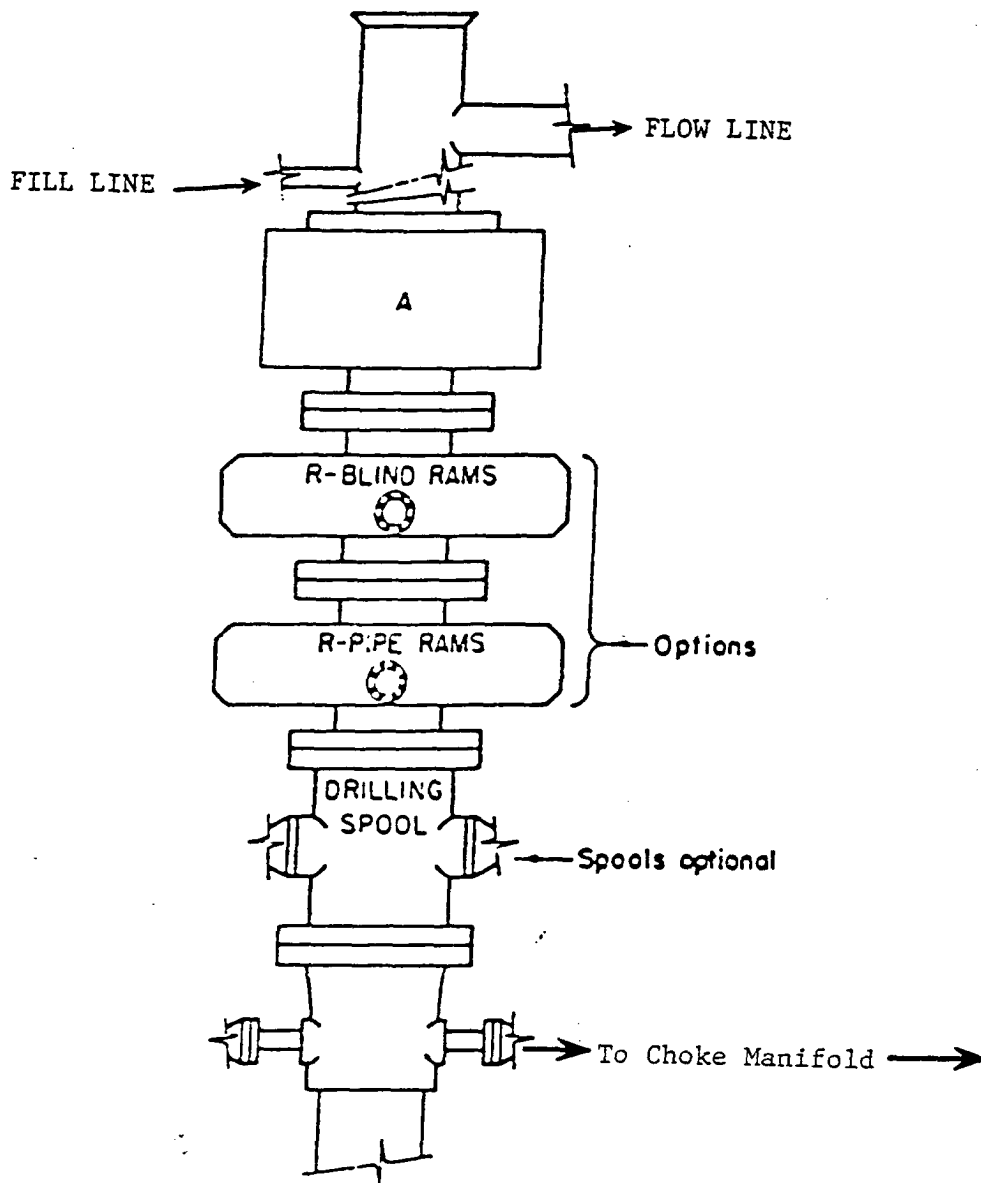
EXHIBIT "C"
 TOPOGRAPHIC MAP SHOWING
 ROADS & DIRECTIONS TO
 POGO PRODUCING COMPANY
 PALLADIUM "7" FEDERAL # 8
 UNIT "E" LOT 2 SECTION 7
 T24S-R31E EDDY CO. NM



- ⌞ Wind Direction Indicators (wind sock or streamers)
- △ H2S Monitors (alarms at bell nipple and shale shaker)
- Briefing Areas
- Remote BOP Closing Unit
- Sign and Condition Flags

EXHIBIT "D"
RIG LAY OUT PLAT

POGO PRODUCING COMPANY
PALLADIUM "7" FEDERAL # 8
UNIT "E" LOT 2 SECTION 7
T24S-R31E EDDY CO. NM

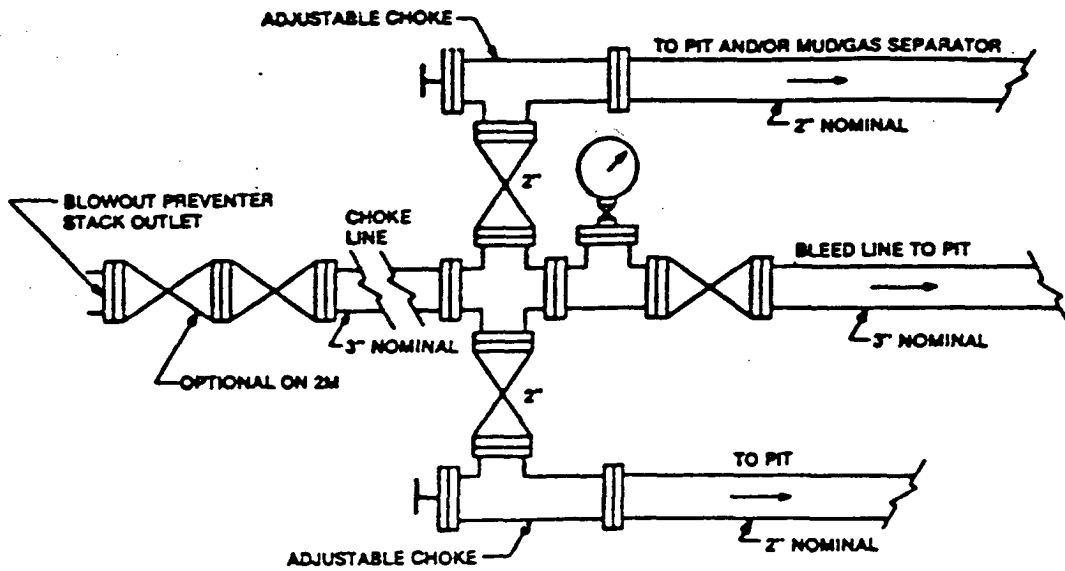


ARRANGEMENT SRRA

900 Series
3000 PSI WP

EXHIBIT "E"
SKETCH OF B.O.P. TO BE USED ON

POGO PRODUCING COMPANY
PALLADIUM "7" FEDERAL # 8
UNIT "E" LOT 2 SECTION 7
T24S-R31E EDDY CO. NM



Typical choke manifold assembly for 3M WP system

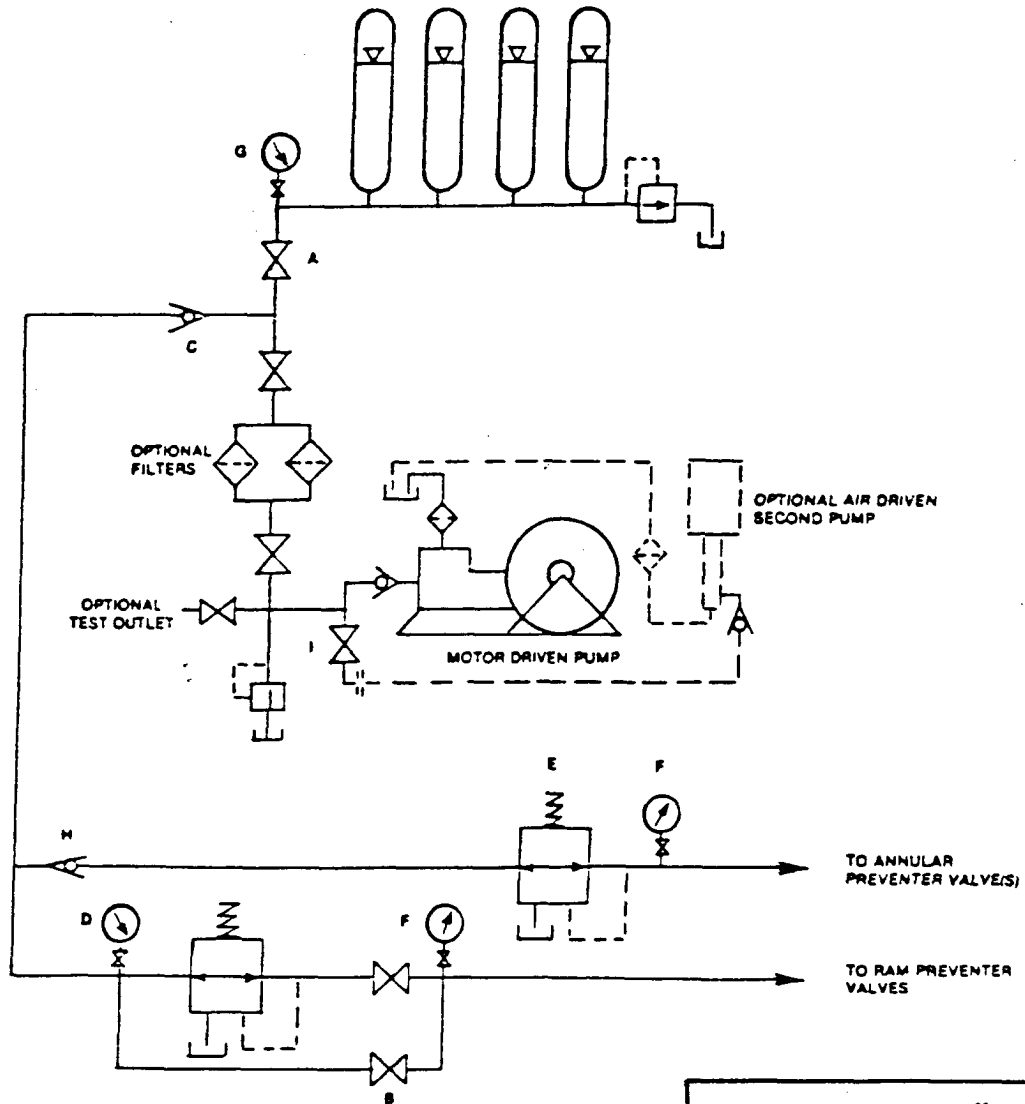


EXHIBIT "E-1"
CHOKE MANIFOLD & CLOSING UNIT

POGO PRODUCING COMPANY
PALLADIUM "7" FEDERAL # 8
UNIT "E" LOT 2 SECTION 7
T24S-R31E EDDY CO. NM

