



March 29, 2007

HAND-DELIVERED

Mark E. Fesmire, P. E.
Director
Oil Conservation Division
New Mexico Department of Energy,
Minerals and Natural Resources
1220 South Saint Francis Drive
Santa Fe, New Mexico 87505

Re: Application of EOG Resources, Inc. for Administrative Approval of the Simultaneous Dedication of the N/2 of Section 35, Township 15 South, Range 24 East, N.M.P.M., Eddy County, New Mexico to its proposed Hasburg A 35 Fee Well No. 1H and the existing Hasburg A 35 Fee Well No. 2H.

Dear Mr. Fesmire:

EOG Resources, Inc. is the operator of a standard 320-acre spacing unit in the West Cottonwood Creek-Wolfcamp Gas Pool (**Pool Code 75260**) comprised of the N/2 of Section 35, Township 15 South, Range 24 East, N.M.P.M., Eddy County, New Mexico. This spacing unit is dedicated to EOG's Hasburg A 35 Fee Well No. 2H which has been horizontally drilled and produces from the Wolfcamp formation.

EOG seeks administrative approval of the simultaneous dedication of this standard 320-acre gas spacing unit to the following two horizontal gas wells:

- A. the existing **Hasburg A 35 Fee Well No. 2H (API No. 30-05-63859)** horizontally drilled from a surface location 1,880 feet from the North line and 154 feet from the East line to an end point or bottom hole location 1,880 feet from the North line and 660 feet from the West line of said Section 35; and
- B. the proposed **Hasburg A 35 Fee Well No. 1H (API No. 30-05 -63858)** to be horizontally drilled from a surface location 760 feet from the North line and 153 feet from the East line to a proposed end point or bottomhole location 760 feet from the North line and 660 feet from the West line of said Section 35.



Both the penetration point and the bottomhole location for the Hasburg A 35 Fee Well No. 2H are at a standard location in the Wolfcamp formation pursuant to Division Rules 104.C (2) (a) and 111.A (7). EOG now intends to horizontally drill and complete its proposed Hasburg A 35 Fee Well No. 1H to be drilled to the targeted subsurface end-point or bottomhole location 760 feet from the North line and 660 feet from the West line (Unit D) of Section 35. EOG proposes to drill this well in compliance with the setback requirements of Division Rules 104.C(2)(b) and 111.A(7) for deep gas wells in southeast New Mexico.

Attached hereto as **Exhibit A** is a copy of Division Form C-102 for this well that shows the proposed surface and bottomhole location of the well.

Exhibit B is a map of offset operators around the spacing unit in Section 35. EOG is the only offset operator but certain working interest owners are not common. **Exhibit C** is a list of affected parties as defined by Division Rules. As required by Rule 1210, a copy of this application (with attachments) has been sent to those affected parties in accordance with Rule 1207(A)(5) and they have been advised that if they have an objection to this application it must be filed in writing with the Division's Santa Fe office within twenty days from the date this notice was sent.

The simultaneous dedication of the N/2 acres of said Section 35 to the Hasburg A 35 Fee Well Nos. 1H and 2H will afford EOG the opportunity to efficiently produce the Wolfcamp formation under this spacing unit. EOG's proposed simultaneous dedication of these wells does not exceed the number of wells allowed by Division Rule for this spacing unit.

Your attention to this application is appreciated.

Sincerely,

A handwritten signature in cursive script that reads "Ocean Munds-Dry".

Ocean Munds-Dry
Attorney for EOG Resources, Inc.

Enclosures



March 29, 2007

CERTIFIED MAIL
RETURN RECEIPT REQUESTED

AFFECTED INTEREST OWNERS

Re: Application of EOG Resources, Inc., for simultaneous dedication,
Eddy County, New Mexico.

Ladies and Gentlemen:

This letter is to advise you that EOG Resources, Inc. has filed the enclosed application with the New Mexico Oil Conservation Division seeking the simultaneous dedication of the proposed Hasburg A 35 Fee Well No. 1H and the existing Hasburg A 35 Fee Well No. 2H to the N/2 of Section 35, Township 15 South, Range 24 East, NMPM, Eddy County, New Mexico.

As an owner of an interest that may be affected by the proposed well, you may object to this application. Objections must be filed in writing within twenty days from this date at the Division's Santa Fe office that is located at 1220 South Saint Francis Drive, Santa Fe, New Mexico. 87505. If no objection is received within this twenty-day period, this application for an unorthodox well location may be approved.

Very truly yours,

Ocean Munds-Dry
ATTORNEY FOR EOG RESOURCES, INC.

Enclosures

District I
1625 N. French Dr., Hobbs, NM 88240
District II
1301 W. Grand Avenue, Artesia, NM 88210
District III
1000 Rio Brazos Rd., Aztec, NM 87410
District IV
1220 S. St. Francis Dr., Santa Fe, NM 87505

State of New Mexico
Energy, Minerals & Natural Resources Department
OIL CONSERVATION DIVISION
1220 South St. Francis Dr.
Santa Fe, NM 87505

Form C-102
Revised October 12, 2005
Submit to Appropriate District Office
State Lease- 4 Copies
Fee Lease- 3 Copies

☐ AMENDED REPORT

WELL LOCATION AND ACREAGE DEDICATION PLAT

API Number 30-05-63858	Pool Code 75260	Pool Name Cottonwood Creek; WC West (Gas)
Property Code 36029	Property Name HASBURG "A" 35 FEE	Well Number 1H
OGRID No. 7377	Operator Name EOG RESOURCES, INC.	Elevation 3538'

Surface Location

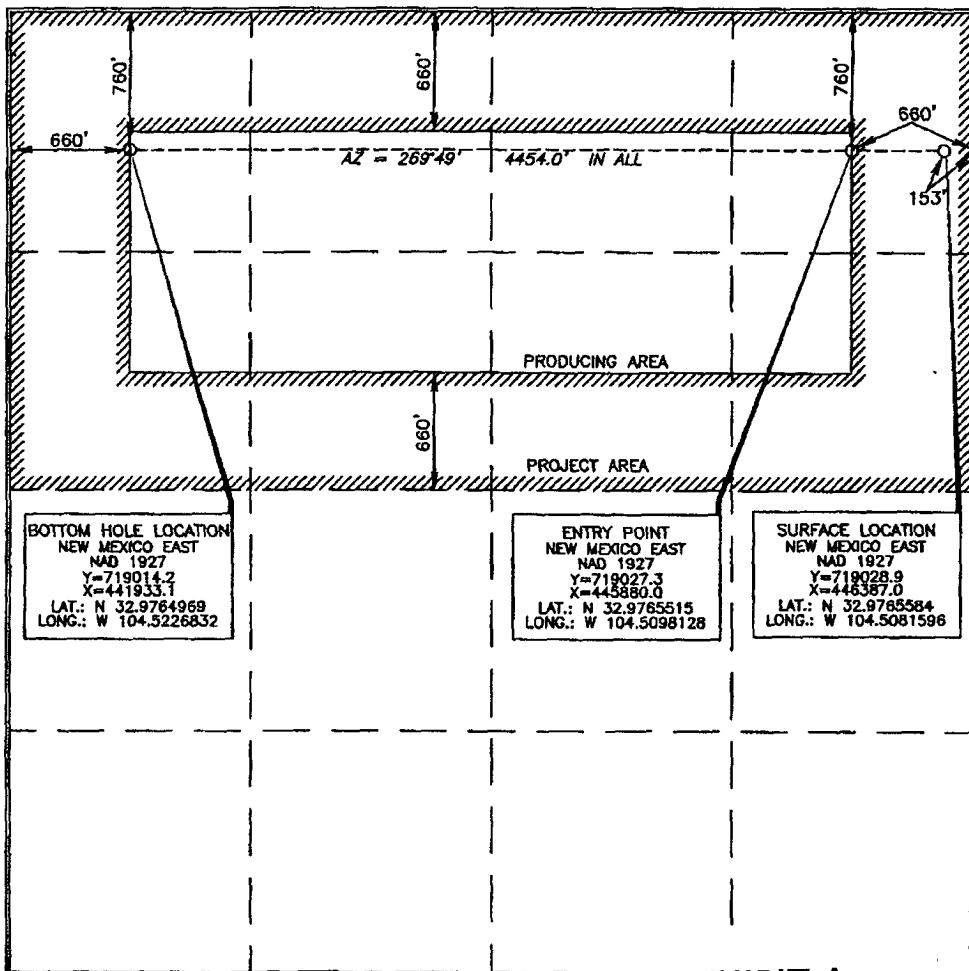
UL or lot no.	Section	Township	Range	Lot Idn	Feet from the	North/South line	Feet from the	East/West line	County
A	35	15 SOUTH	24 EAST, N.M.P.M.		760'	NORTH	153'	EAST	CHAVES

Bottom Hole Location If Different From Surface

UL or lot no.	Section	Township	Range	Lot Idn	Feet from the	North/South line	Feet from the	East/West line	County
D	35	15 SOUTH	24 EAST, N.M.P.M.		760'	NORTH	660'	WEST	CHAVES

Dedicated Acres 320	Joint or Infill	Consolidation Code	Order No.
-------------------------------	-----------------	--------------------	-----------

No allowable will be assigned to this completion until all interests have been consolidated or a non-standard unit has been approved by the division.



OPERATOR CERTIFICATION

I hereby certify that the information contained herein is true and complete to the best of my knowledge and belief, and that this organization either owns a working interest or unleased mineral interest in the land including the proposed bottom hole location or has a right to drill this well at this location pursuant to a contract with an owner of such a mineral or working interest, or to a voluntary pooling agreement or a compulsory pooling order heretofore entered by the division.

Donny G. Glanton 9/19/2006
Signature Date

Donny G. Glanton
Printed Name

SURVEYOR CERTIFICATION

I hereby certify that the well location shown on this plat was plotted from field notes of actual surveys made by me or under my supervision, and that the same is true and correct to the best of my belief.

AUGUST 31, 2006
Date of Survey
Signature and Seal of Professional Surveyor
Terry J. Neal 9/5/06
Certificate Number 15079

WO# 060831WL-a (AL)

EXHIBIT A

District I
1625 N. French Dr., Hobbs, NM 88240
District II
1301 W. Grand Avenue, Artesia, NM 88210
District III
1000 Rio Brazos Rd., Aztec, NM 87410
District IV
1220 S. St. Francis Dr., Santa Fe, NM 87505

State of New Mexico
Energy, Minerals & Natural Resources Department
OIL CONSERVATION DIVISION
1220 South St. Francis Dr.
Santa Fe, NM 87505

Form C-402
Revised October 12, 2005
Submit to Appropriate District Office
State Lease- 4 Copies
Fee Lease- 3 Copies

☐ AMENDED REPORT

WELL LOCATION AND ACREAGE DEDICATION PLAT

API Number 30-05-63859	Pool Code 75260	Pool Name Cottonwood Creek; WC West (Gas)
Property Code 36029	Property Name HASBURG "A" 35 FEE	Well Number 2H
OCRID No. 7377	Operator Name EOG RESOURCES, INC.	Elevation 3528'

Surface Location

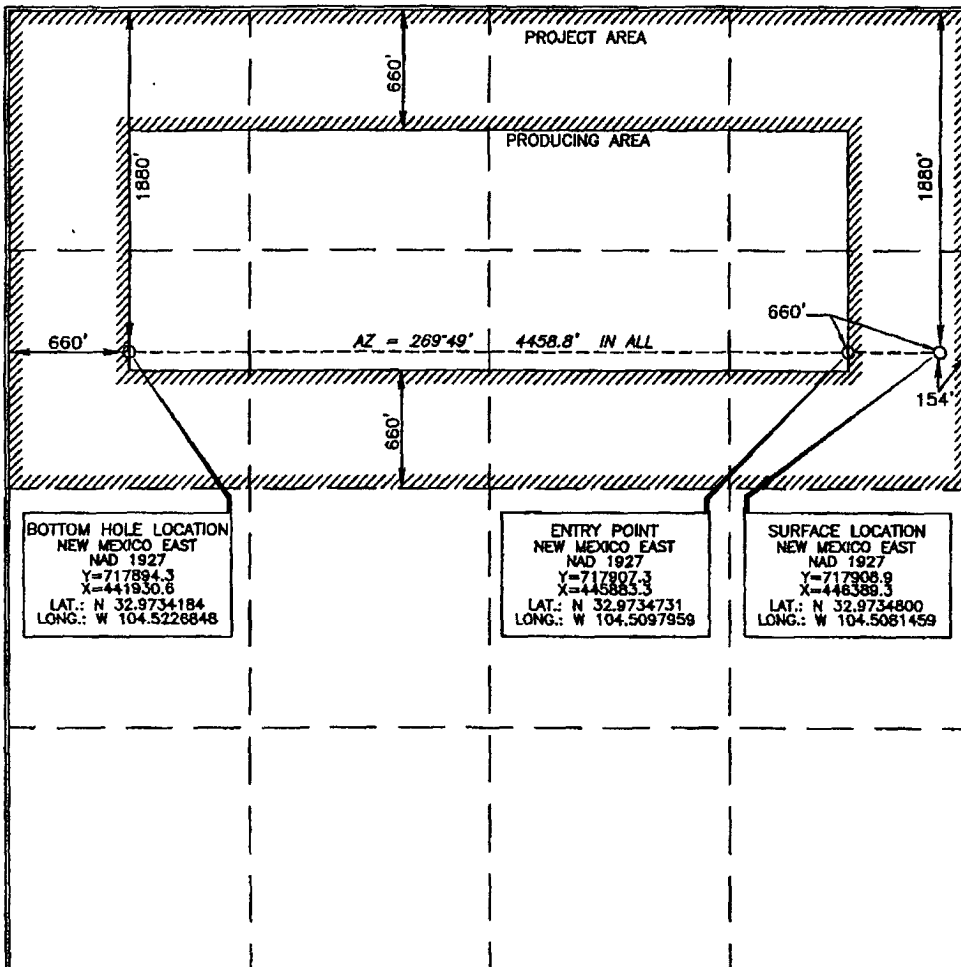
UL or lot no.	Section	Township	Range	Lot Idn	Feet from the	North/South line	Feet from the	East/West line	County
H	35	15 SOUTH	24 EAST, N.M.P.M.		1880'	NORTH	154'	EAST	CHAVES

Bottom Hole Location If Different From Surface

UL or lot no.	Section	Township	Range	Lot Idn	Feet from the	North/South line	Feet from the	East/West line	County
E	35	15 SOUTH	24 EAST, N.M.P.M.		1880'	NORTH	660'	WEST	CHAVES

Dedicated Acres 320	Joint or Infill	Consolidation Code	Order No.
-------------------------------	-----------------	--------------------	-----------

No allowable will be assigned to this completion until all interests have been consolidated or a non-standard unit has been approved by the division.



OPERATOR CERTIFICATION

I hereby certify that the information contained herein is true and complete to the best of my knowledge and belief, and that this organization either owns a working interest or unleased mineral interest in the land including the proposed bottom hole location or has a right to drill this well at this location pursuant to a contract with an owner of such a mineral or working interest, or to a voluntary pooling agreement or a compulsory pooling order heretofore entered by the division.

Don D. Mith 9/19/2006
Signature Date

Donn G. Glanton
Printed Name

SURVEYOR CERTIFICATION

I hereby certify that the well location shown on this plat was plotted from field notes of a survey made by me or under my supervision and that the same is true and correct to the best of my belief.

August 31, 2006
Date of Survey

Terry J. Chas 9/5/06
Signature and Seal of Professional Land Surveyor

Certificate Number 15079

WO# 060831WL-b (A)

PROPOSED WELLS IN SECTION 35

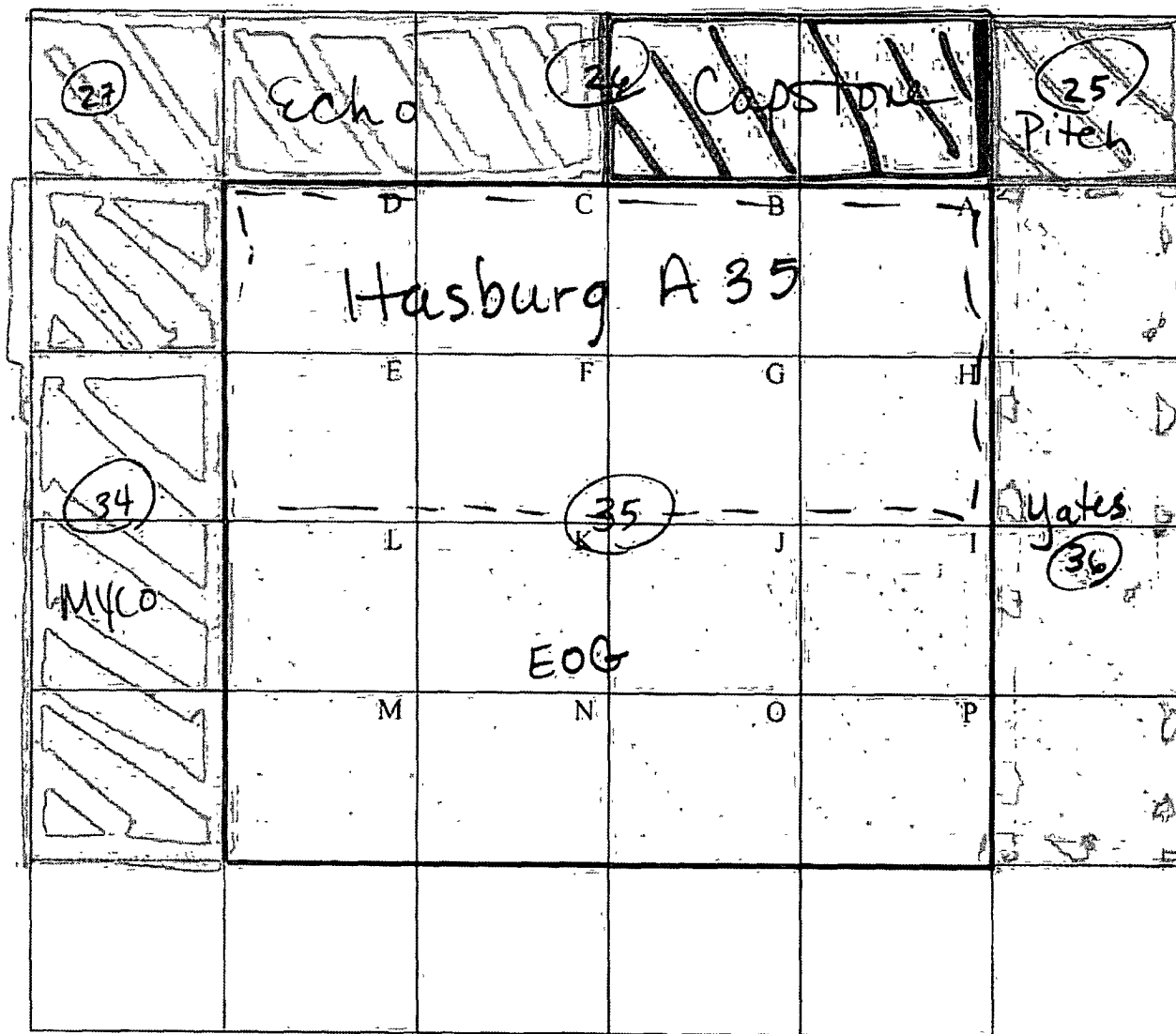


EXHIBIT B

Exhibit C

**Application of EOG Resources, Inc.
Simultaneous Dedication of
N/2 of Section 35, Township 15 South, Range 24 East, NMPM
Eddy County, New Mexico**

Myco Industries, Inc.
P.O. Box 840
Artesia, New Mexico 88211-0840

Yates Petroleum Corporation
105 South Fourth Street
Artesia, New Mexico 88210

Pitch Energy
c/o Marbob Energy Corporation
Post Office Box 227
Artesia, New Mexico 88211-0227

Capstone Oil & Gas Company
P.O. Box 10187
Midland, Texas 79702

Echo Production
P.O. Box 1567
Graham, Texas 76450