

**S****OCD-ARTESIA**Form 3160-5  
(June 1990)UNITED STATES  
DEPARTMENT OF THE INTERIOR  
BUREAU OF LAND MANAGEMENTFORM APPROVED  
Budget Bureau No 1004-0135  
Expires March 31, 1993

## SUNDRY NOTICES AND REPORTS ON WELLS

Do not use this form for proposals to drill or to deepen or reentry to a different reservoir  
Use "APPLICATION FOR PERMIT--" for such proposals5 Lease Designation and Serial No  
NM-9187

6 If Indian, Allottee or Tribe Name

## SUBMIT IN TRIPLICATE

7 If Unit or CA Agreement Designation

1 Type of Well

Oil Gas  
☐ Well ☒ Well ☐ OtherNOV 26 2007  
OCD-ARTESIA

8 Well Name and No

Box Canyon Unit #5

2 Name of Operator

Yates Petroleum Corporation

9 API Well No.

30-015-33155

3 Address and Telephone No

105 South Fourth Street, Artesia, NM 88210 (505) 7481471

10 Field and Pool, or Exploratory Area

Little Box Canyon/Strawn

4 Location of Well (Footage, Sec., T., R., M., or Survey Description)

11 County or Parish, State

1800' FNL. &amp; 800' FEL Section 24-T21S-R21E (Unit H, SENE)

Eddy County, NM

## 12 CHECK APPROPRIATE BOX(S) TO INDICATE NATURE OF NOTICE, REPORT, OR OTHER DATA

## TYPE OF SUBMISSION

- ☐
- Notice of Intent
- 
- ☒
- Subsequent Report
- 
- ☐
- Final Abandonment Notice

## TYPE OF ACTION

- ☐
- Abandonment
- 
- ☐
- Recompletion
- 
- ☐
- Plugging Back
- 
- ☐
- Casing Repair
- 
- ☐
- Altering Casing
- 
- ☒
- Other Off Lease Measurement, Surface
- 
- Pool Commingle Gas Only

- ☐
- Change of Plans
- 
- ☐
- New Construction
- 
- ☐
- Non-Routine Fracturing
- 
- ☐
- Water Shut-Off
- 
- ☐
- Conversion to Injection
- 
- ☐
- Dispose Water

(Note: Report results of multiple completion on Well completion or Recompletion Report and Log Form)

13 Describe Proposed or Completed Operations (Clearly state all pertinent details, and give pertinent dates including estimated date of starting any proposed work. If well is directionally drilled, give subsurface locations and measured and true vertical depths for all markers and zones pertinent to this work)\*

Yates Petroleum Corporation respectfully request administrative approval to Off Lease Measurement, Surface, Pool, Commingle Gas Only.

**Federal**Box Canyon Unit #5  
Sec 24-T21S-R21E  
Little Box Canyon/Strawn  
Eddy County, NM  
Lease # NM-9187**Federal**Mescal SE Federal #2  
Sec 18-T21S-R22E  
Little Box Canyon/Morrow  
Eddy County, NM  
Lease # NM-14459**APPROVED**

NOV 20 2007

LES BABYAK  
PETROLEUM ENGINEER

The CDP is located at the Box Canyon Unit #5. Please see attached plat and site facility diagram.

Diversified ownership Owners were notified

The production from the Box Canyon Unit #5 and the Mescal SE Federal #2 is measured on each lease and the sales point is at the Enterprise meter located on the Box Canyon Unit #5

The proposed commingling of production is in the interest of conservation and will not result in reduced royalty or improper measurement of production. Estimated daily gas production for the Box Canyon Unit #5 is 65 mcf per day for the Mescal SE Federal #2 is 800 mcf per day.

The purpose of the Off Lease measurement &amp; Surface Commingling, is to reduce operating costs for storage and treating, thereby extending the economic life of each well. Without approval for utilizing existing batteries on adjacent leases, it will become necessary to built separate facilities for each well. This will greatly increase costs and shorten the economic life of the well.

The proposed commingling is necessary for economic operation of the above referenced leases

We understand that the request approval will not constitute the granting of any right-of-way or construction rights not granted by the lease instrument. And, we will submit within 30 days an application for right-of-way approval to the BLM's Realty Section in your office if we have not already done so.

14 I hereby certify that the foregoing is true and correct

Signed

Title Production Secretary

Date November 12, 2007

(This space for Federal or State office use)

Approved by

Title

Date

Conditions of approval, if any:

Title 18 U.S.C. Section 1001, makes it a crime for any person knowingly and willfully to make to any department or agency of the United States any false, fictitious or fraudulent statements or representations as to any matter within its jurisdiction.

District I  
1625 N. French Dr., Hobbs, NM 88240  
District II  
1301 W. Grand Avenue, Artesia, NM 88210  
District III  
1000 Rio Brazos Rd., Aztec, NM 87410  
District IV  
1220 S. St. Francis Dr., Santa Fe, NM 87505

State of New Mexico  
Energy, Minerals & Natural Resources Department  
**OIL CONSERVATION DIVISION**  
1220 South St. Francis Dr.  
Santa Fe, NM 87505

Form C-102  
Revised June 10, 2003  
Submit to Appropriate District Office  
State Lease - 4 Copies  
Fee Lease - 3 Copies

☐ AMENDED REPORT

**WELL LOCATION AND ACREAGE DEDICATION PLAT**

<sup>1</sup> API Number <b>30-015-33155</b>	<sup>2</sup> Pool Code <b>96640</b>	<sup>3</sup> Pool Name <b>Little Box Canyon Strawn</b>
<sup>4</sup> Property Code <b>12057</b>	<sup>5</sup> Property Name <b>Box Canyon Unit</b>	
<sup>7</sup> OGRID No. <b>025575</b>	<sup>8</sup> Operator Name <b>Yates Petroleum Corporation</b>	
		<sup>6</sup> Well Number <b>5</b>
		<sup>9</sup> Elevation <b>4506' GL</b>

<sup>10</sup> Surface Location									
UL or lot no. <b>H</b>	Section <b>24</b>	Township <b>21S</b>	Range <b>21E</b>	Lot Idn	Feet from the <b>1800</b>	North/South line <b>North</b>	Feet from the <b>800</b>	East/West line <b>East</b>	County <b>Eddy</b>

<sup>11</sup> Bottom Hole Location If Different From Surface									
UL or lot no.	Section	Township	Range	Lot Idn	Feet from the	North/South line	Feet from the	East/West line	County
<sup>12</sup> Dedicated Acres <b>320</b>		<sup>13</sup> Joint or Infill		<sup>14</sup> Consolidation Code		<sup>15</sup> Order No.			

NO ALLOWABLE WILL BE ASSIGNED TO THIS COMPLETION UNTIL ALL INTERESTS HAVE BEEN CONSOLIDATED OR A NON-STANDARD UNIT HAS BEEN APPROVED BY THE DIVISION

<sup>16</sup> 	<sup>17</sup> <b>OPERATOR CERTIFICATION</b> I hereby certify that the information contained herein is true and complete to the best of my knowledge and belief  Signature Tina Huerta Printed Name Regulatory Compliance Supervisor Title and E-mail Address March 4, 2005 Date
	<sup>18</sup> <b>SURVEYOR CERTIFICATION</b> I hereby certify that the well location shown on this plat was plotted from field notes of actual surveys made by me or under my supervision, and that the same is true and correct to the best of my belief Date of Survey Signature and Seal of Professional Surveyor Certificate Number



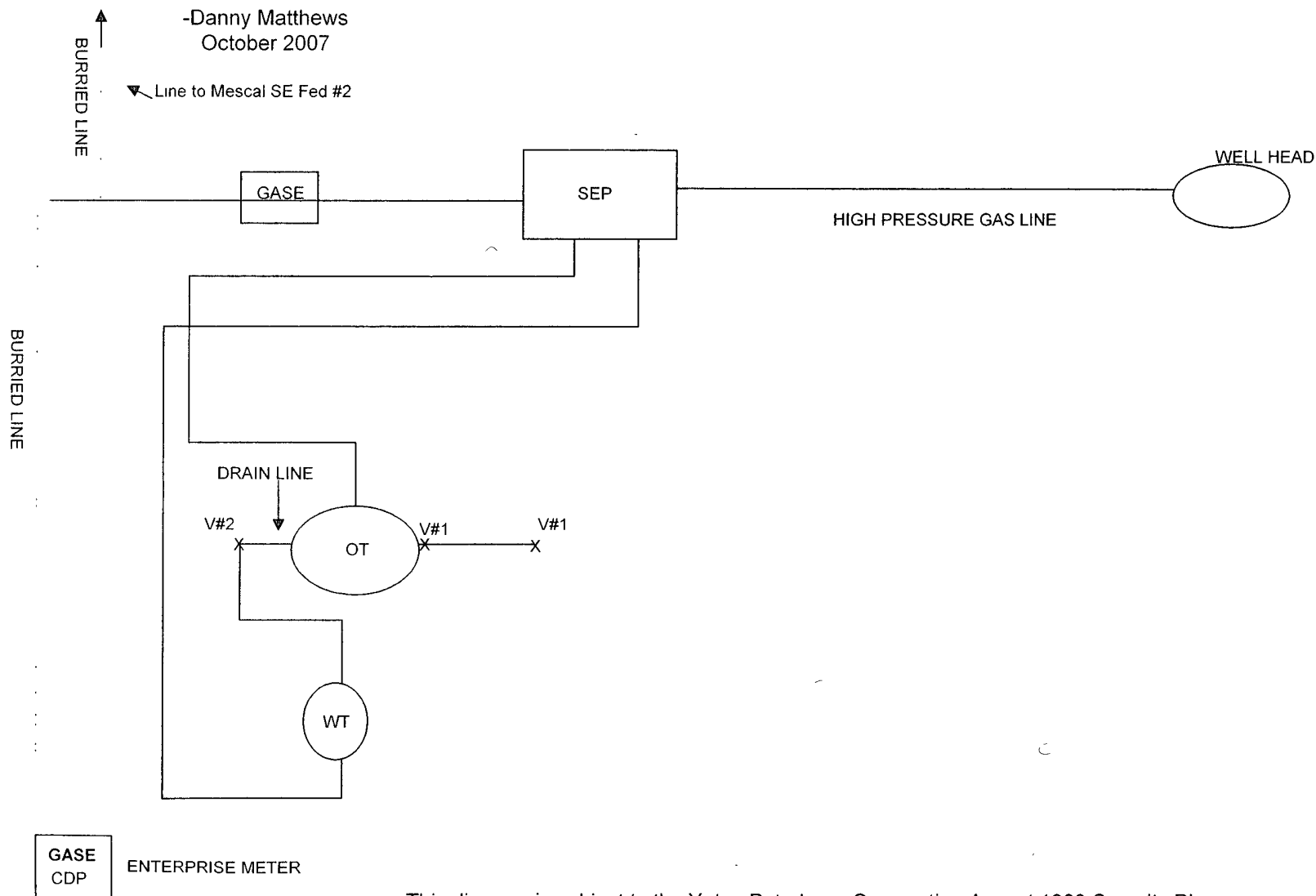
105 South 4<sup>th</sup> Street \* Artesia, NM 88210  
(505)-748-1471

## BOX CANYON UNIT #5

1800' FNL & 800' FEL \* Sec24 – T21S – R21E \* Unit 1  
Eddy County, NM  
API - 3001533155

-Danny Matthews  
October 2007

▼ Line to Mescal SE Fed #2



GASE  
CDP

ENTERPRISE METER

This diagram is subject to the Yates Petroleum Corporation August 1983 Security Plan  
which is on file at 105 South 4th Street, Artesia, NM

DISTRICT I  
1525 N. French Dr., Hobbs, NM 88240

DISTRICT II  
1301 W. Grand Avenue, Artesia, NM 88210

DISTRICT III  
1000 Rio Brazos Rd., Aztec, NM 87410

DISTRICT IV  
1220 S. St. Francis Dr., Santa Fe, NM 87505

State of New Mexico  
Energy, Minerals and Natural Resources Department

Form C-102  
Revised October 12, 2005

Submit to Appropriate District Office  
State Lease - 4 Copies  
Fee Lease - 3 Copies

OIL CONSERVATION DIVISION  
1220 South St. Francis Dr.  
Santa Fe, New Mexico 87505

☐ AMENDED REPORT

WELL LOCATION AND ACREAGE DEDICATION PLAT

API Number		Pool Code	Pool Name
Property Code	Property Name MESCAL "SE" FEDERAL		Well Number 2
OGRID No. 025575	Operator Name YATES PETROLEUM CORPORATION		Elevation 4515

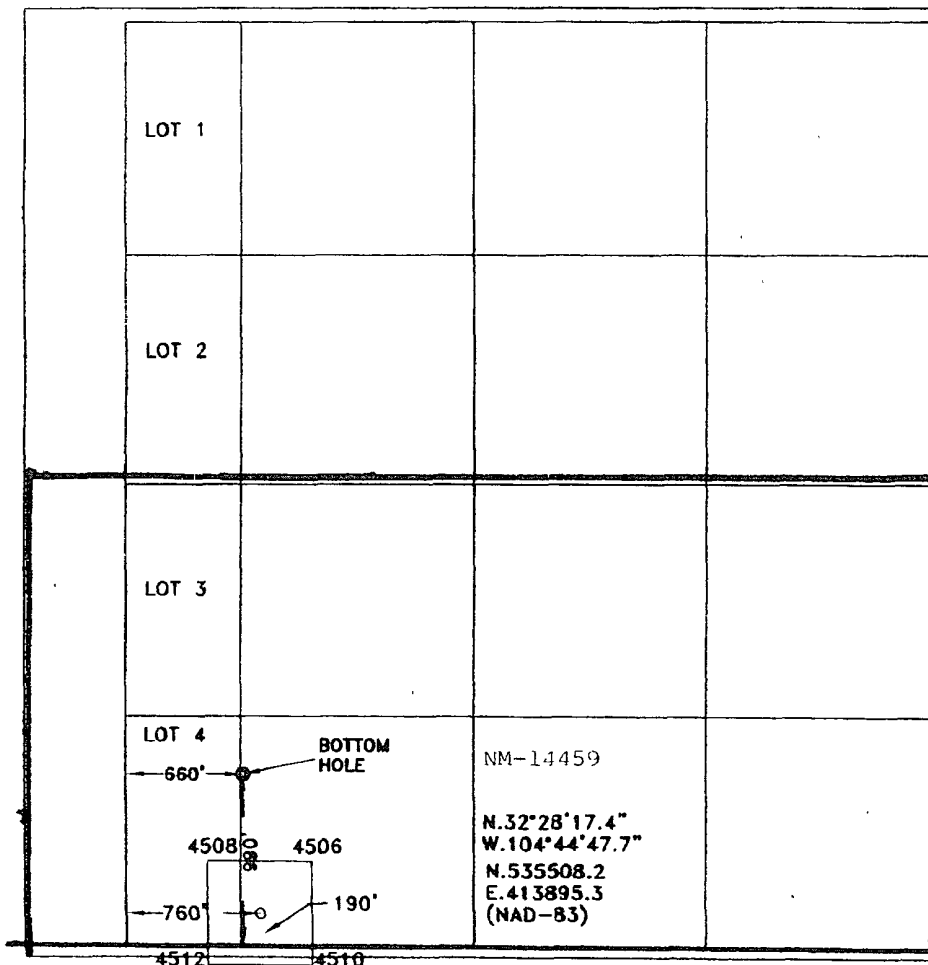
Surface Location

UL or lot No.	Section	Township	Range	Lot Idn	Feet from the	North/South line	Feet from the	East/West line	County
N	18	21S	22E		190	SOUTH	760	WEST	EDDY

Bottom Hole Location If Different From Surface

UL or lot No.	Section	Township	Range	Lot Idn	Feet from the	North/South line	Feet from the	East/West line	County
N	18	21S	22E		990	SOUTH	660	WEST	EDDY
Dedicated Acres	Joint or Infill	Consolidation Code	Order No.						
320 S/2									

NO ALLOWABLE WILL BE ASSIGNED TO THIS COMPLETION UNTIL ALL INTERESTS HAVE BEEN CONSOLIDATED  
OR A NON-STANDARD UNIT HAS BEEN APPROVED BY THE DIVISION



OPERATOR CERTIFICATION

I hereby certify that the information contained herein is true and complete to the best of my knowledge and belief, and that this organization either owns a working interest or unleased mineral interest in the land including the proposed bottom hole location pursuant to a contract with an owner of such a mineral or working interest, or to a voluntary pooling agreement or a compulsory pooling order heretofore entered by the division.

Debbie L. Caffall  
Signature Date 1/19/2006  
Debbie L. Caffall  
Printed Name

SURVEYOR CERTIFICATION

I hereby certify that the well location shown on this plat was plotted from field notes of actual surveys made by me or under my supervision, and that the same is true and correct to the best of my belief.

12/12/2006

Date Surveyed  
Signature & Seal of Professional Surveyor

Herschell L. Jones  
Certificate No. 3640  
GENERAL SURVEYING

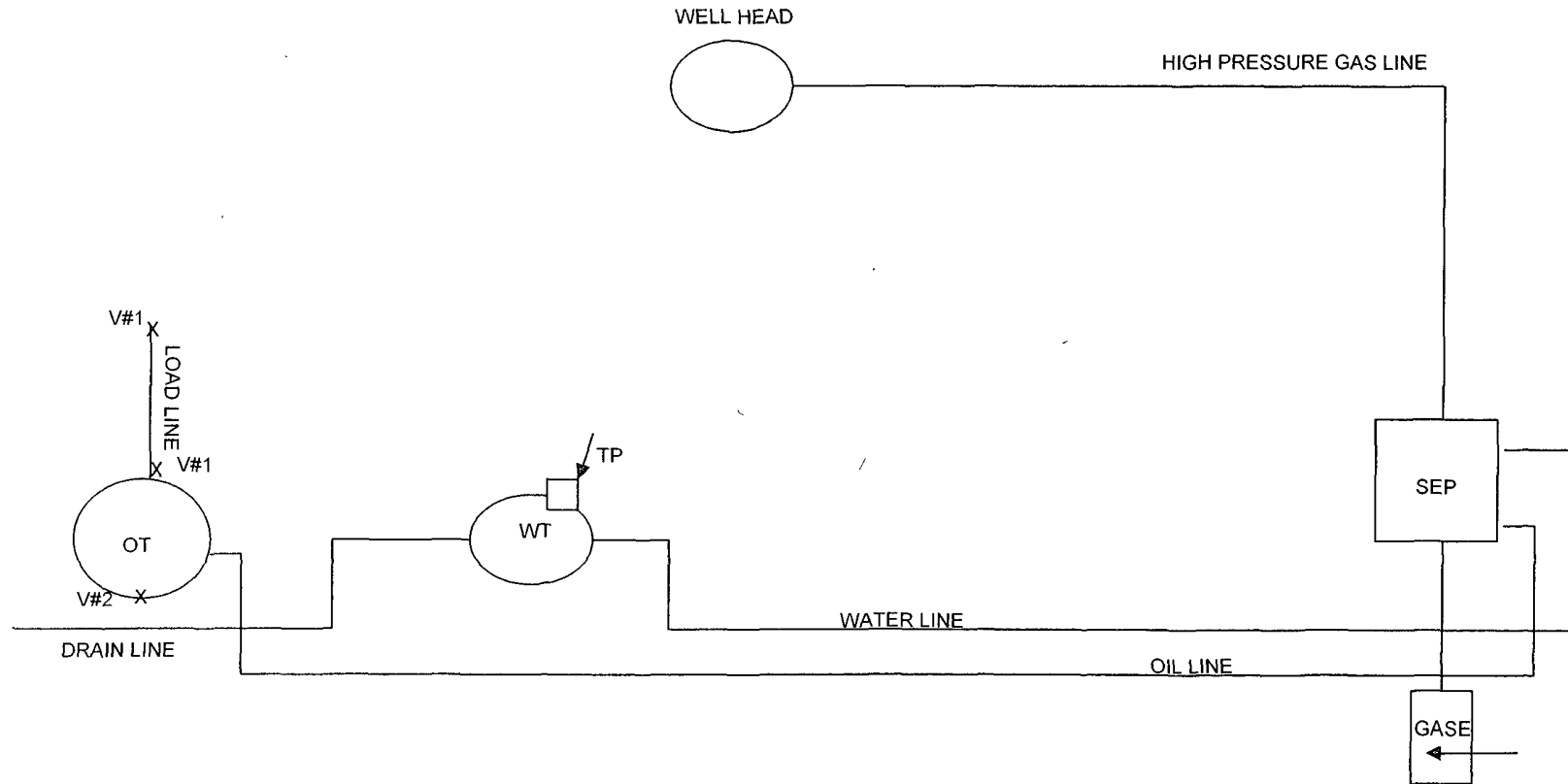


105 South 4<sup>th</sup> Street \* Artesia, NM 88210  
(505)-748-1471

Danny Matthews  
October 2007

## MESCAL SE FEDERAL #2

190'FSL & 760'FWL \* Sec18 - T21S-R22E \* Unit 1  
EDDY County, NM  
API -3001535509



This diagram is subject to the Yates Petroleum Corporation August 1983 Security Plan  
which is on file at 105 South 4th Street, Artesia, NM

Underground to Box  
Canyon #5