

Submit To : appropriate District Office State Lease - 6 copies Fee Lease - 5 copies District I 1625 N French Dr., Hobbs, NM 88240 District II 1301 W Grand Avenue, Artesia, NM 88210 District III 1000 Rio Brazos Rd., Aztec, NM 87410 District IV 1220 S. St. Francis Dr., Santa Fe, NM 87505	State of New Mexico Energy, Minerals and Natural Resources Oil Conservation Division 1220 South St. Francis Dr. Santa Fe, NM 87505	Form C-105 Revised June 10, 2003 WELL API NO. : 30 015 35786 5. Indicate Type of Lease STATE FEE X State Oil & Gas Lease No.
WELL COMPLETION OR RECOMPLETION REPORT AND LOG		
1a. Type of Well: OIL WELL GAS WELL X DRY <input type="checkbox"/> OTHER _____ b. Type of Completion: NEW X WORK <input type="checkbox"/> DEEPEN <input type="checkbox"/> PLUG DIFF. RESVR. OTHER: WELL OVER BACK		7 Lease Name or Unit Agreement Name Lakewood 32 <div style="text-align: right;"> DEC 12 2007 OGD-ARTESIA </div>
2. Name of Operator: Rubicon Oil & Gas, LLC Ogrid: 194266 3. Address of Operator 508 W. Wall, Suite 500, Midland, TX 79701		8. Well No.: 1 9. Pool name or Wildcat: Wildcat; Morrow
4 Well Location Unit Letter H : 1500' Feet From The North Line and 660' Feet From The East Line Section 32 Township 19S Range 26E NMPM Eddy County		
10. Date Spudded 9-27-07	11 Date T.D Reached 10-24-07	12. Date Compl. (Ready to Prod.) 11-20-07
13. Elevations (DF& RKB, RT, GR, etc) 3294' GR	14. Elev. Casinghead	
15. Total Depth. 9800'	16. Plug Back T.D. 9756'	17 If Multiple Compl How Many Zones?
18. Intervals Drilled By		Rotary Tools X Cable Tools
19. Producing Interval(s), of this completion - Top, Bottom, Name 9604-9644' - Morrow		20. Was Directional Survey Made No
21. Type Electric and Other Logs Run: GR/CCL		22. Was Well Cored: No
23. CASING RECORD (Report all strings set in well)		
CASING SIZE	WEIGHT LB /FT.	DEPTH SET
13 3/8"	54.5#	381'
9 5/8"	36#	1616'
4 1/2"	11.6#	9798'
24. LINER RECORD		
SIZE	TOP	BOTTOM
SACKS CEMENT	SCREEN	
25. TUBING RECORD		
SIZE	DEPTH SET	PACKER SET
2 3/8"	9569'	9569'
26. Perforation record (interval, size, and number) Morrow: 9604-9644' w/6 spf, 240 holes		27. ACID, SHOT, FRACTURE, CEMENT, SQUEEZE, ETC. DEPTH INTERVAL AMOUNT AND KIND MATERIAL USED 9604-9644' none
28. PRODUCTION		
Date First Production 11-21-07	Production Method (<i>Flowing, gas lift, pumping - Size and type pump</i>) flowing	
Well Status (<i>Prod or Shut-in</i>) Producing		
Date of Test 11-26-07	Hours Tested 24	Choke Size 24/64"
Prod'n For Test Period	Oil - Bbl 57	Gas - MCF 5219
Water - Bbl. 11	Gas - Oil Ratio 474,454	
Flow Tubing Press. 2700#	Casing Pressure packer	Calculated 24-Hour Rate
Oil - Bbl. Gas - MCF Water - Bbl.		Oil Gravity - API - (<i>Corr.</i>)
29. Disposition of Gas (<i>Sold, used for fuel, vented, etc.</i>)		Test Witnessed By
Sales 30 List Attachments Logs & inclination : C-104 attached.		
Signature 	Name : Ann E. Ritchie	Title: Regulatory Agent Date: 12-7-07
E-mail Address: ann.ritchie@wtor.net; 432 684-6381		

INSTRUCTIONS

This form is to be filed with the appropriate District Office of the Division not later than 20 days after the completion of any newly-drilled or deepened well. It shall be accompanied by one copy of all electrical and radio-activity logs run on the well and a summary of all special tests conducted, including drill stem tests. All depths reported shall be measured depths. In the case of directionally drilled wells, true vertical depths shall also be reported. For multiple completions, items 25 through 29 shall be reported for each zone. The form is to be filed in quintuplicate except on state land, where six copies are required. See Rule 1105.

INDICATE FORMATION TOPS IN CONFORMANCE WITH GEOGRAPHICAL SECTION OF STATE

Southeastern New Mexico		Northwestern New Mexico	
T. Anhy	T. Canyon	T. Ojo Alamo	T. Penn. "B"
T. Salt	T. Strawn	T. Kirtland-Fruitland	T. Penn. "C"
B. Salt	T. Atoka 9100'	T. Pictured Cliffs	T. Penn. "D"
T. Yates	T. Miss	T. Cliff House	T. Leadville
T. 7 Rivers	T. Devonian	T. Menefee	T. Madison
T. Queen	T. Silurian	T. Point Lookout	T. Elbert
T. Grayburg	T. Montoya	T. Mancos	T. McCracken
T. San Andres	T. Simpson	T. Gallup	T. Ignacio Otzte
T. Glorieta	T. McKee	Base Greenhorn	T. Granite
T. Paddock	T. Ellenburger	T. Dakota	T.
T. Blinebry	T. Gr. Wash	T. Morrison	T.
T. Tubb	T. Delaware Sand	T. Todilto	T.
T. Drinkard	T. Bone Springs	T. Entrada	T.
T. Abo	T. Morrow 9250'	T. Wingate	T.
T. Wolfcamp 6900'	T. MiddleMorrow:	T. Chinle	T.
T. Penn	T.	T. Permian	T.
T. Cisco (Bough C) '	T.	T. Penn "A"	T.

OIL OR GAS SANDS OR ZONES

No. 1, from.....to.....

No. 3, from.....to.....

No. 2, from.....to.....

No. 4, from.....to.....

IMPORTANT WATER SANDS

Include data on rate of water inflow and elevation to which water rose in hole.

No. 1, from.....to.....feet.....

No. 2, from.....to.....feet.....

No. 3, from.....to.....feet.....

LITHOLOGY RECORD (Attach additional sheet if necessary)

From	To	Thickness In Feet	Lithology	From	To	Thickness In Feet	Lithology
				2900			Yeso
				6900			Wolfcamp
				8400			Strawn
				9100			Atoka
				9250			Morrow
				9550'			Morrow Clastics

Rubicon Oil & Gas, LLC Lakewood Prospect

KB: 3311'

GL: 3294'

Lakewood 32-1

Eddy County, New Mexico

Completed Wellbore

30-015-35786

1500' FNL & 660' FEL
Sec. 32, T19S, R26E, UL H
Eddy County, NM

Completed: 11/29/2007

TD'd: 10/21/2007

Spud: 9/27/2007

Bit Size: 17-1/2"
8.4 MW, 32+ Vis, Spud Mud

13-3/8" 54.50# J-55 STC @ 381' w/ ~390sx. Premium plus
10 pps. Calseal, C 2% CC
Circ 71 sks to surface. PD 8:30 am 9/27/2007

Bit Size: 12-1/4"
8.4 MW, Sweeps as needed

9-5/8" 36# J55 STC @ 1616' CMT w/ 350sks. Interfill premium
plus + 200 sks Premium Plus w/ 1/4# polyflake, 1% CaCl Circ 11
bbls or 46 sks to surface. PD 10:15 10/1/2007

Bit Size: 8-3/4"
1600'-7,500 8.6-9.4 MW Cutbrine & sweeps
7,500'-9,800 9.6-9.8 MW cutbrine XCD & Starch

DV @ ~5995'

TOC 1st stage 6990', void to DV tool,
2nd Stage good cmt to 1200'
Did not capture TOC on CBL/VDL ran 11/16/2007

4-1/2" 11.60# HCP-110 LTC 9,798' w/ Davis Lynch 778 MC
stage tool @ 5995.

1) Cement 9800' to 6000' 300 sks Lite premium w/ .6% Halad R9
5# salt, 1/8# polyflake + 488 sks Super H w/ 5% Halad R344, .4%
CFR-3, 5# gilsonite, 3# salt, .2% HR 5. Overdisplace, did not
bump plug. Drop opening bomb and open Stage tool, circ 4 hrs
did not recover any cement from 1st stage.

2) Cement 6,000' to 1,200' 928 sks Premium plus lite w/ 5# salt,
.6% Halad 9, 1/8# polyflake + 100 sks Premium plus neat. PD and
tool closed w/ 3000 psi Calc TOC ~1400'

PBTD (FC): 9,756' TD: ~9,800'

San Andres ~1100'

TOC ~1,400'

Yeso ~2900'
Wolfcamp ~6900'

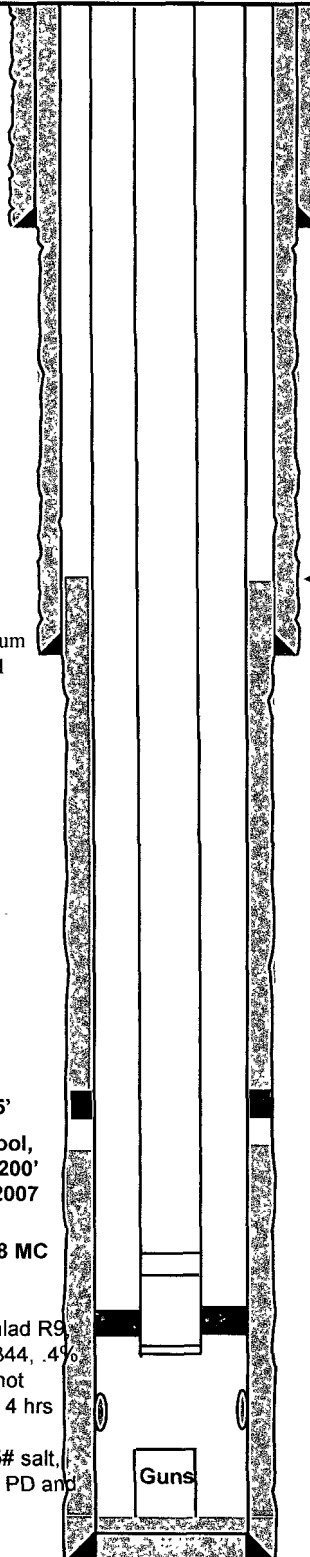
Strawn ~8,400'
Atoka ~9,100'
Morrwo ~9,250'
Morrow Clastics ~9550'
TD Miss ~9800'

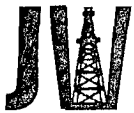
Tubing Configuration:

1 jt 2-3/8" 4.7# L-80 tubing
2 subs 6' & 10' 2-3/8" 4.7# L-80 tubing
296 jt 2-3/8" 4.7# L-80 tubing
1 Marker sub 4' 2-3/8" 4.7# L-80 tubing
3 jt 2-3/8" 4.7# L-80 tubing
On/Off tool w/ 1.81" F Nipple @ 9549'
AS1 10k Pkr @ 9551'
1 sub 10' 2-3/8" 4.7# L-80 tubing
1.81" R Nipple @ 9569'
1 sub 10' 2-3/8" 4.7# L-80 tubing
Vent Sub
Mechanical Gun Release @ 9581'

Gun's Released to Bottom
Top of guns~9700' w/ 3.06" OD on top to fish
Overall length of fish 63.55'

Perforate the Morrow
6 jspf, 60° phase, .40 HD, TCP
9604-9644' (240 holes)





DRILLING INC. Oil Well Drilling Contractor

Post Office Box 160 • Artesia, NM 88211-0160 • Office (505) 748-8704 • Fax (505) 748-8719

October 25, 2007

Rubicon Oil & Gas, LLC.
500 West Texas, Suite 1000
Midland, Texas 79701

Re: Lakewood 32 #1
Sec. 32, T-19-S, R-26-E
Eddy County, New Mexico

Attn: Hal Lee

The following is a Deviation Survey on the referenced well in Eddy County, New Mexico:

164' - 3/4 °	3989' - 2 1/4 °	4992' - 2 1/2 °	7153' - 1/2 °
347' - 1 °	4198' - 3 °	5212' - 3 °	7653' - 3/4 °
812' - 1 3/4 °	4336' - 2 1/2 °	5368' - 3 °	7842' - 1 °
1309' - 1 3/4 °	4493' - 3 1/4 °	5494' - 3 °	8313' - 1 1/4 °
1591' - 1/2 °	4585' - 3 1/4 °	5714' - 3 °	8785' - 3/4 °
2079' - 1 1/4 °	4680' - 3 °	5963' - 2 1/2 °	9222' - 1 1/4 °
2549' - 1 3/4 °	4774' - 3 1/2 °	6182' - 1 °	9693' - 1 °
3019' - 1/2 °	4836' - 3 °	6683' - 1 1/2 °	9785' - 1 1/2 °
3519' - 1 °			



OFFICIAL SEAL
Barbara L. Carey
NOTARY PUBLIC - STATE OF NEW MEXICO
My commission expires: Sept. 1, 2009

Sincerely,

Gary W. Chappell
Contracts Manager

STATE OF NEW MEXICO)
COUNTY OF EDDY)

The foregoing was acknowledged before me this 25th day of October, 2007 by Gary W. Chappell.

MY COMMISSION EXPIRES

Sept. 1, 2009

Barbara L. Carey
NOTARY PUBLIC

State of New Mexico

Energy, Minerals and Natural Resources Department

Form C-102

Revised October 12, 2005

Submit to Appropriate District Office

State Lease - 4 Copies

Fee Lease - 3 Copies

DISTRICT I

FRENCH DR., HORRIS, NM 88240

DISTRICT II

GRAND AVENUE, ARTESIA, NM 88210

DISTRICT III

000 Rio Brazos Rd., Aztec, NM 87410

DISTRICT IV

1220 S. ST. FRANCIS DR., SANTA FE, NM 87505

OIL CONSERVATION DIVISION

1220 SOUTH ST. FRANCIS DR.

Santa Fe, New Mexico 87505

WELL LOCATION AND ACREAGE DEDICATION PLAT

☐ AMENDED REPORT

API Number	Pool Code 96070	Pool Name Wildcat - MORROW
Property Code	Property Name LAKEWOOD - 32	Well Number X-1
OGRID No. 194266	Operator Name RUBICON OIL AND GAS, LLC	Elevation 3294'

Surface Location

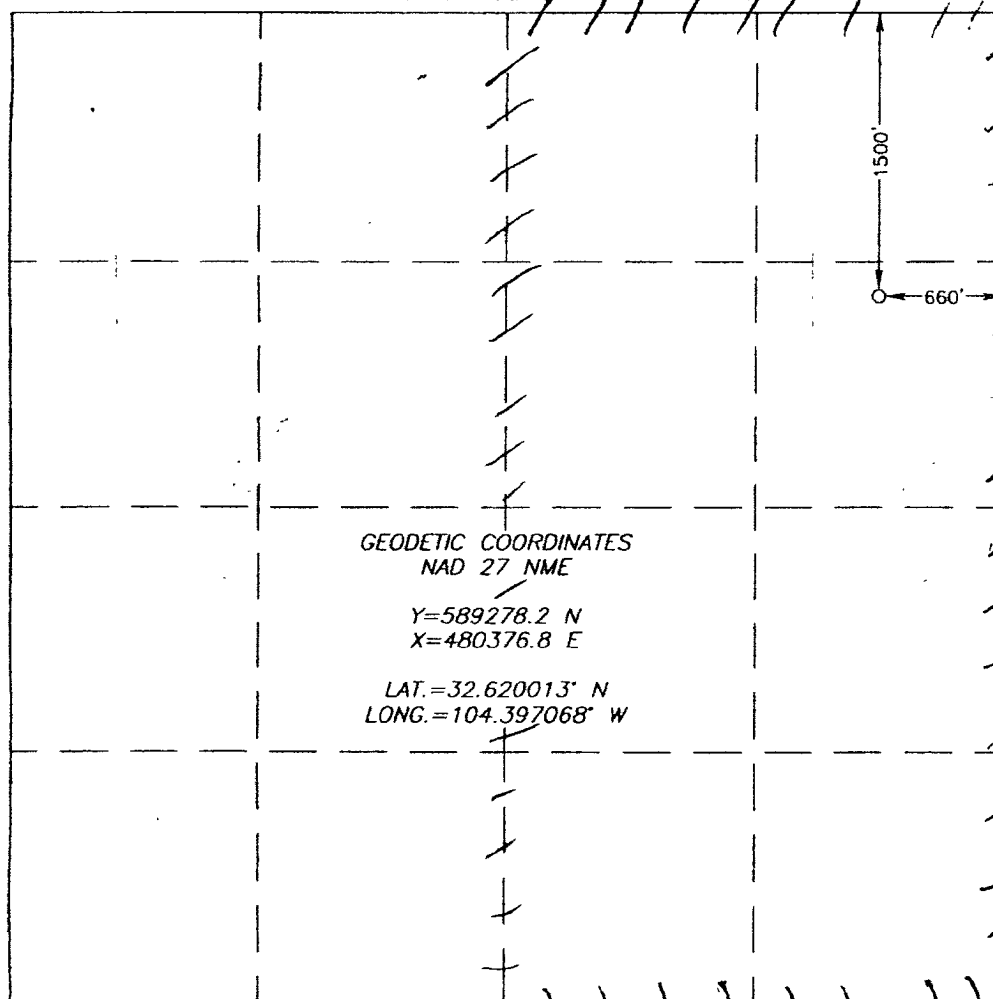
UL or lot No.	Section	Township	Range	Lot Idn	Feet from the	North/South line	Feet from the	East/West line	County
H	32	19-S	26-E		1500	NORTH	660	EAST	EDDY

Bottom Hole Location If Different From Surface

UL or lot No.	Section	Township	Range	Lot Idn	Feet from the	North/South line	Feet from the	East/West line	County

Dedicated Acres 320	Joint or Infill	Consolidation Code	Order No.
------------------------	-----------------	--------------------	-----------

NO ALLOWABLE WILL BE ASSIGNED TO THIS COMPLETION UNTIL ALL INTERESTS HAVE BEEN CONSOLIDATED
OR A NON-STANDARD UNIT HAS BEEN APPROVED BY THE DIVISION

	OPERATOR CERTIFICATION <i>I hereby certify that the information herein is true and complete to the best of my knowledge and belief, and that this organization either owns a working interest or unleased mineral interest in the land including the proposed bottom hole location or has a right to drill this well at this location pursuant to a contract with an owner of such mineral or working interest, or to a voluntary pooling agreement or a compulsory pooling order heretofore entered by the division.</i> Signature: <u>HAL LEE</u> Date: <u>9/4/2007</u> Printed Name: <u>HAL LEE - AGENT</u>
	SURVEYOR CERTIFICATION <i>I hereby certify that the well location shown on this plat was plotted from field notes of actual surveys made by me or under my supervision, and that the same is true and correct to the best of my belief.</i> Date Surveyed: <u>6/15/07</u> Signature of Professional Surveyor: <u>Ronald J. Eidson</u> Certificate No. <u>GARY EIDSON 12841</u> <u>RONALD J. EIDSON 3239</u>
	GEODETIC COORDINATES NAD 27 NME Y=589278.2 N X=480376.8 E LAT.=32.620013° N LONG.=104.397068° W